

# ScanSnap SV600

**Simple, Speedy & Compact.**  
**From Paper to PDF in one touch!**



## ■ General Specifications

Description	ScanSnap SV600	
Scanner type	Over Head system, simplex scanning	
Scanning modes	Color, grayscale, monochrome, Automatic (color, grayscale, monochrome detection)	
Image sensor	Lens reduction optics / color CCD x 1	
Light source	(White LED + lens illumination) x 2	
Optical resolution	Horizontal scanning: 285 to 218 dpi, Vertical scanning: 283 to 152 dpi *1	
Scanning speed (A3 landscape) *2	Auto mode *3	"Better mode" or "Best mode": 3 seconds / page
	Normal mode	Color / Grayscale: 150 dpi, Monochrome: 300 dpi 3 seconds / page *4
	Better mode	Color / Grayscale: 200 dpi, Monochrome: 400 dpi 3 seconds / page *4
	Best mode	Color / Grayscale: 300 dpi, Monochrome: 600 dpi 3 seconds / page *4
	Excellent mode	Color / Grayscale: 600 dpi, Monochrome: 1,200 dpi 3 seconds / page *4
Document size	Automatically recognizes document size, A3(landscape), A4(landscape), A5(landscape), A6(landscape), B4(landscape), B5(landscape), B6(landscape), Post card, Business card, Double Letter(landscape), Letter, Legal(landscape) and Customized size (Max: 432 x 300 mm (17.0 x 11.8 in.), Min: 25.4 x 25.4 mm (1 x 1 in.)) *5	
Document thickness	30 mm (1.18 in.) or less	
How to start scanning *6	Select one of the below. 1. Normal scan: Press "Scan" button for every page 2. Timed Interval Scanning (Timed Mode) 3. Page turning detection	
Interface *7	USB2.0 / USB1.1 (connector: B Type)	
Image processing functions	Deskew by text on document, Auto paper size detection, Auto image rotation, Auto color detection, Book image correction *8, Multiple document detection *9	
Magnification in vertical scanning (length)	±1.5%	
Power requirement	AC 100 to 240 V, 50 / 60 Hz	
Power consumption	Operating mode: 20 W or less Sleep mode: 2.6 W or less Auto Standby (Off) mode: 0.4 W	
Operation environment	Temperature: 5 to 35 °C (41 to 95 °F) Relative humidity: 20 to 80 % (Non-condensing)	
Dimensions (W x D x H)	210 x 156 x 383 mm	
Device weight	3 kg (6.613 lb)	
Environmental compliance	ENERGY STAR® / RoHS	
Driver	Specific driver (Does not support TWAIN / ISIS™)	

\*1 Optical resolution differs due to different scanning angle on the same document. \*2 Scanning speed may vary due to the system environment used. \*3 Switch between "Better mode" and "Best mode" depends on the length of the document. A4 (portrait): 200 dpi, A6 size or below: 300 dpi. \*4 Time between actual start of scanning (scanning pad) and finish scanning. \*5 For documents of thickness over 5 mm, the maximum document size is 400 x 300 mm. \*6 When performing continuous scanning, time is needed for the scanning head to return to its original position. \*7 Compatible with USB 3.0 port but connection will run as USB 2.0 speed. \*8 Automatically correct distortion caused by the curve of an opened book or magazine. \*9 Digitize multiple documents by automatically cropping several documents in one scan.

## ■ Cleaning Materials

Description	Part number	Remarks
Cleaner F1	PA03950-0352	100 ml bottle For cleaning the glass, camera, lamp etc of the scanning head.
Cleaning Wipe	PA03950-0419	1 pack (24 packets) Wet tissue with "cleaner F1". For cleaning the glass, camera, lamp etc of the scanning head.

## ■ Software

	Windows®	Mac OS
Driver*1	ScanSnap Manager ScanSnap Organizer	ScanSnap Manager ScanSnap Organizer
Applications	ScanSnap Receipt*2	ScanSnap Receipt*2
	CardMinder*2	CardMinder*2
	ABBYY FineReader for ScanSnap™	ABBYY FineReader for ScanSnap™
	Scan to Microsoft® SharePoint®	-
	Nuance® Power PDF Standard*3	Nuance® PDF Converter for Mac*3

\*1 TWAIN or ISIS™ applications cannot be used directly. An image file (a JPEG, PDF or searchable PDF file) can be generated by simply pressing a single button. The function is operable with ScanSnap Manager (ScanSnap specific driver). \*2 Please visit the website of the company (<http://scansnap.fujitsu.com/g-support/en/>) for the download information. \*3 Please refer to the included license certificate to download the software.

This scanner is designed to digitize materials that can be reproduced lawfully, in accordance with applicable copyright regulations and other laws. ScanSnap users are responsible for how they use this scanner. It is imperative that ScanSnap users comply with all applicable local rules and laws, including, without limitation, copyright laws when using this scanner.

\*ABBYY and FineReader are trademarks of ABBYY Software, Ltd. which may be registered in some jurisdictions. ABBYY™ FineReader™ Engine ©ABBYY. OCR by ABBYY. \*Evernote is a registered trademark or trademark of Evernote Corporation. \*Google and Google Drive are registered trademarks or trademarks of Google Inc. \*Intel, Pentium, and Intel Core are registered trademarks or trademarks of Intel Corporation in the United States and other countries. \*ISIS™ is a registered trademark of EMC Corporation in the United States. \*iPad, iPhone and iPod touch are trademarks of Apple Inc. \*Microsoft, Windows, Windows Vista, Excel, PowerPoint, SharePoint, Internet Explorer and OneDrive are either registered trademarks or trademarks of Microsoft Corporation in the United States and/or other countries. \*Nuance, Power PDF, and PDF Converter are trademarks of Nuance Communications, Inc. and/or its licensors and is used under license. \*ScanSnap, ScanSnap logo, ScanSnap Manager, ScanSnap Organizer and CardMinder are registered trademarks or trademarks of PFU Limited in Japan. \*Other company names and product names are the registered trademarks or trademarks of the respective companies.

For more ScanSnap related information, visit our website at : <http://scansnap.fujitsu.com/>

<b>⚠ Safety Precautions</b>	Be sure to carefully read all safety precautions prior to using this product and use this device as instructed.	Do not place this device in wet, moist, steamy, dusty or oily areas. Using this product under such conditions may result in electrical shock, fire or damage to this product.
-----------------------------	---	---

Specifications are subject to change without notice.

## ■ ScanSnap SV600 System Requirements

### ● Windows®

Recommended operating systems	Windows® 10 (32-bit / 64-bit) *1 Windows® 8.1 (32-bit / 64-bit) *1	Windows® 7 (32-bit / 64-bit)
CPU *3	Intel® Core™ i5 2.5 GHz or higher	
Memory capacity *3	4 GB or more	
Display resolution	1,024 x 768 pixels or higher	800 x 600 pixels or higher
Disk capacity *4	4.2 GB or more of free hard disk space	
DVD-ROM drive	Required for installation *5	
USB port *3*6	USB3.0 *7 / USB2.0 / USB1.1	

\*1 Operate Windows in desktop mode. \*2 The ScanSnap device may not work if the connected computer does not meet these requirements. \*3 Scanning speeds may drop if the recommended CPU, memory capacity and USB 1.1 requirements are not met. \*4 Microsoft .NET Framework 3.5 SP1 will be installed (requires 500 MB of disk space) together with ScanSnap Manager, ScanSnap Organizer or CardMinder for systems that do not have .NET Framework 3.5 SP1 installed. When using "Scan to Google Drive" with ScanSnap Manager/ScanSnap Organizer, users also need to install either .NET Framework 4 or in-place updates of .NET Framework 4. \*5 If you have no DVD-ROM drive, please visit the website of the company (<http://scansnap.fujitsu.com/g-support/en/>). \*6 The ScanSnap operates on both USB 2.0 and USB 3.0 without any difference in performance. \*7 Some computers do not recognize the ScanSnap when it is connected to a USB 3.0 port. In this case, please use a USB 2.0 port. \*8 Please refer to the ScanSnap website for the latest support information of the driver and applications. Compatibility may differ depending on the software's version. \*9 The system requirements may change depending on the duration of support and the support policy of the companies that make the software.

### ● Mac OS

Recommended operating systems	macOS High Sierra v10.13 / Sierra v10.12 *1 OS X El Capitan v10.11
CPU *3	Intel® Core™ i5 2.5 GHz or higher
Memory capacity *3	4 GB or more
Display resolution	1,024 x 768 pixels or higher
Disk capacity	2.6 GB or more of free hard disk space
DVD-ROM drive	Required for installation *4
USB port *3*5	USB3.0 *6 / USB2.0 / USB1.1

\*1 macOS v10.12.1 or later is recommended. \*2 The ScanSnap device may not work if the connected computer does not meet these requirements. \*3 Scanning speeds may drop if the recommended CPU, memory capacity and USB 1.1 requirements are not met. \*4 If you have no DVD-ROM drive, please visit the website of the company (<http://scansnap.fujitsu.com/g-support/en/>). \*5 The ScanSnap operates on both USB 2.0 and USB 3.0 without any difference in performance. \*6 Some computers do not recognize the ScanSnap when it is connected to a USB 3.0 port. In this case, please use a USB 2.0 port. \*7 Please refer to the ScanSnap website for the latest support information of the driver and applications. Compatibility may differ depending on the software's version. \*8 The system requirements may change depending on the duration of support and the support policy of the companies that make the software.

### ■ Included items

- AC cable ● AC adapter ● USB cable ● Background Pad ● Set-up DVD-ROM
- Extenders (x2)

### ■ Option

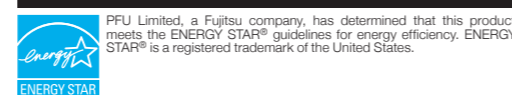
Description	Part number	Remarks
Background Pad	PA03641-0052	Set in front of the scanner when scanning. * One pad is bundled with the scanner.

## Features

- ▶ Minimize unevenness in image quality with "VI technology"
- ▶ Automatically cropping of several documents with "Multiple Document Detection"
- ▶ Shorten operating time with "Page Turning Detection"
- ▶ Correct distortion and curviness of books with "Book Image Correction"
- ▶ Various functions for making your daily work easier and simpler

## Software

- ▶ Nuance® Power PDF Standard (Win)
- ▶ Nuance® PDF Converter for Mac (Mac)
- ▶ ScanSnap Receipt (Win / Mac)
- ▶ CardMinder (Win / Mac)



PFU Limited, a Fujitsu company, has determined that this product meets the ENERGY STAR® guidelines for energy efficiency. ENERGY STAR® is a registered trademark of the United States.

shaping tomorrow with you

# A New Perspective on scanning

ScanSnap SV600



## Digitize anything with ease

You can scan newspaper, magazines or books directly without cutting or damaging it.

### Scan anything from business cards to A3 size (landscape)\* documents

No more hassle to cut or fold documents larger than A4 size such as newspaper and magazines, simply position the documents and they can be scanned directly without any extra effort.

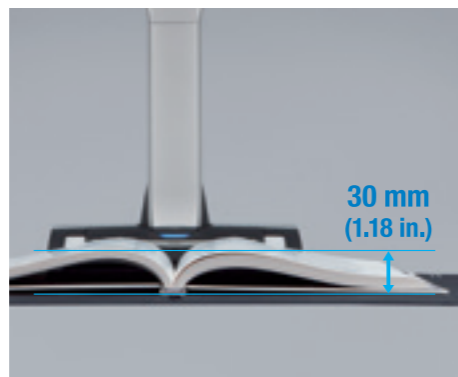
\*The maximum document size will be 400 x 300 mm when the thickness of the document is over 5 mm



### No problem in scanning thick documents\*

Not only books or magazines, but also documents with sticky notes can be scanned directly without any difficulty.

\*Maximum document thickness is 30 mm (1.18 in.)



### No need to worry about your delicate documents or books

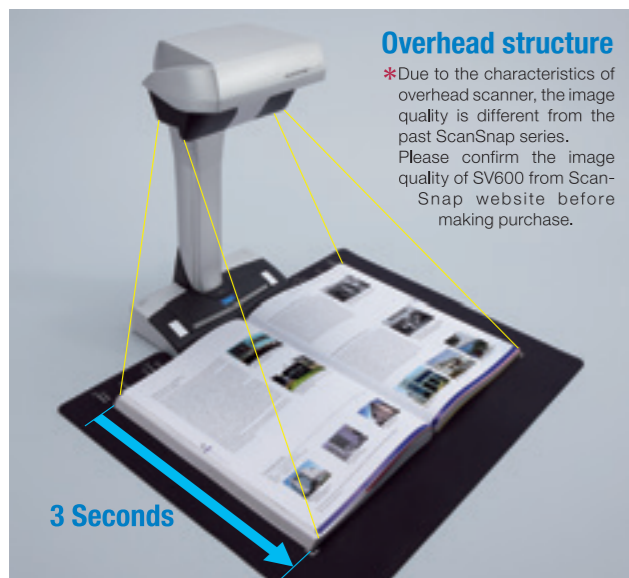
With "VI technology", scanning can be performed without touching the document. You do not need to worry that documents such as crayon or oil paintings, pencil writings or photos will be damaged by touching.



## VI technology\*

(\*VI technology: Versatile Imaging technology)

Equipped with "VI technology" which combines Deep depth of field lens, CCD linear image sensor and High directivity LED lamp, SV600 is able to minimize unevenness in image quality and generate smooth image even scanning from a distance.



### Overhead structure

\*Due to the characteristics of overhead scanner, the image quality is different from the past ScanSnap series. Please confirm the image quality of SV600 from ScanSnap website before making purchase.

### Deep depth of field lens

Wide auto focus area (even the focusing distance has changed)

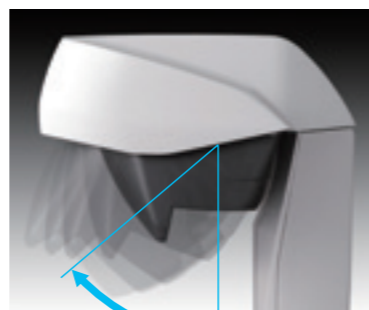
### CCD linear image sensor

Produce steady images



### High directivity LED lamp

Maintain same brightness without affecting by the surrounding



## Convenient for book scanning

### Step 1

You can continuously scan multiple pages smoothly.

### Page Turning Detection

Automatically detect when the page is turned.

### Timed Mode

You can set the time to start scanning after the "Scan" button is pressed.

(When continuous scanning) you can set the time interval before the next scanning to begin.

### Step 2

Book Image Correction – Automatically correct distortion caused by the curve of an opened book. You can confirm and fine tune the scanned images on the preview dialog after scanning.



### Book Image Correction

Can easily correct distortion of the document.

### Point Retouch function

Finger images scanned while suppressing the document can be corrected with ease.

## Smooth operation with the assist of various functions

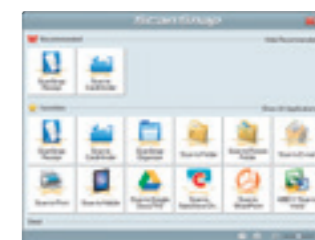
### Quick Menu saves time



Even first-time ScanSnap user can master the functions by navigating through the Quick Menu. ScanSnap's Quick Menu automatically pops up after scanning to enable you to link the data to an application, quickly and easily. You do not have to remember any complicated procedures; just simply click the icon on screen.

### Quick Menu: Favorites

It can be easily customized to display just your favorites.



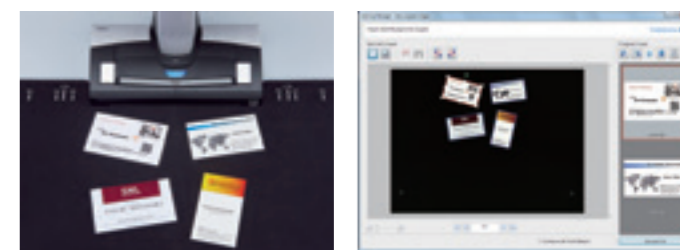
### Quick Menu: Recommended

Icons of the recommended application is displayed in priority.

### Automatically cropping of several documents with "Multiple Document Detection"\*

With only one touch and one scan, the "Multiple Document Detection" function is able to crop several documents at the same time when positioning in the scanning area. You can save time and hassle by placing several business cards, photos, newspaper clippings and other documents at once and let SV600 does the cropping intelligently for you.

\*Up to 10 documents can be cropped automatically. At least 15 mm is needed between documents.



### Fast start up time and scanning speed lead to time saving and efficiency

SV600's start up time is so quick; scanning is ready in only 3 seconds after switching on the scanner. Furthermore, less than 3 seconds are needed for scanning large A3 size documents. This high speed scanning let you enjoy stress free scanning.

### Making ScanSnap Connect Application more convenient

With ScanSnap Sync, whichever device you are on, you can use scanned data from either ScanSnap Organizer or the mobile app ScanSnap Connect Application. ScanSnap Sync automatically synchronizes scanned data between the two. This gives you more flexibility for data management regardless of your location.

\*ScanSnap Sync is realized by utilizing a third party cloud service such as Google Drive, OneDrive and Dropbox. For the latest support information of cloud services, please visit the ScanSnap website.

### Compact design that does not occupy much work space

SV600 is compact and you can use your work space efficiently as you only need space to place document when scanning. Unlike flatbed scanner, it will not occupy your valuable desk space all the time.

### Receipt software with multi-currency support-A few simple steps to digitize and manage the information on your receipts

ScanSnap Receipt allows you to easily scan and extract information from your receipts, and export the data for other accounting software. The sophisticated features within ScanSnap Receipt automatically support various languages and currencies.

\*Please visit the ScanSnap website for details on which languages and currencies are supported.