



PRIMERGY CUSTOMER INFORMATION BULLETIN

Number/Revision:

PY-CIB050-00

Issue Date:

April 23, 2020

Title:

Performance Might be Decreased with BIOS R1.29.0 or Newer

Applies to:

- PRIMERGY Model
 - PRIMERGY RX2520/2530/2540 M4
 - PRIMERGY TX2550 M4
- Operating System
 - VMware ESXi
 - Windows Server 2012 R2
 - Red Hat Enterprise Linux 6.x
 - Red Hat Enterprise Linux 7.5 or older
 - SUSE Linux Enterprise Server 11 SP4

Effective Duration:

Permanent

Problem:

The system performance might be decreased after BIOS R1.29.0 or newer is installed.

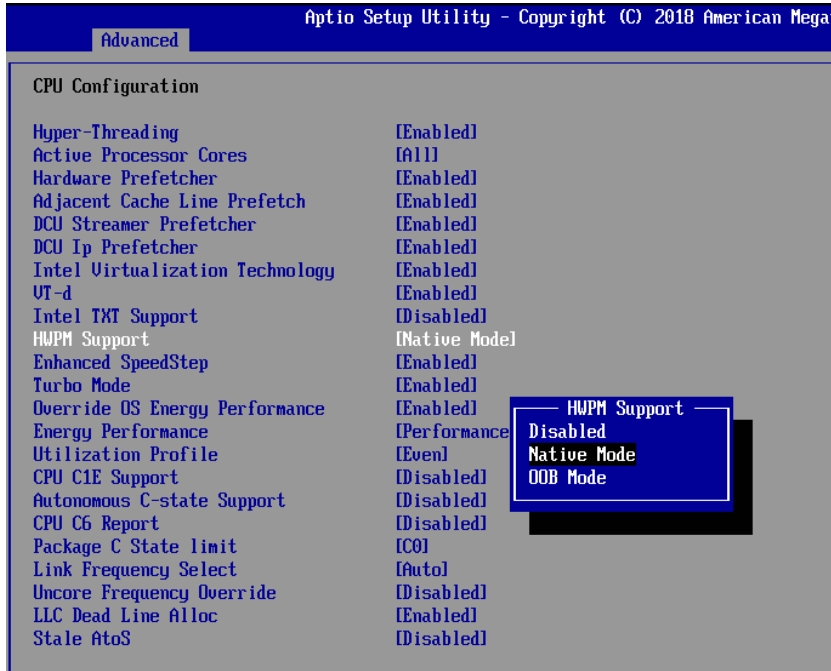
Cause:

With BIOS R1.29.0, a new option for Hardware Power Management (HWPM) in CPU Configuration under the Advanced menu in BIOS was introduced. The current value will be overwritten with the new value ("Native Mode with No Legacy Support").



PRIMERGY CUSTOMER INFORMATION BULLETIN

HWPM Support Options before R1.29.0:



Default value is “Native Mode”.

HWPM Support Options with R1.29.0 or newer:



Default value is “Native Mode with No Legacy Support”.



PRIMERGY CUSTOMER INFORMATION BULLETIN

Solution:

The new default setting might decrease the system performance significantly depending on the Operating System used.

For Windows Server 2016, 2019, RHEL 7.6 or newer, “Native Mode with No Legacy Support” is the optimal setting. We recommend to check and correct the setting to “Native Mode” in case you are using VMware, Windows Server 2012 R2, or older Linux distribution (for example RHEL 7.4).

Revision History:

REVISION	DATE	CHANGE SUMMARY
000	April xx 2020	Initial Release