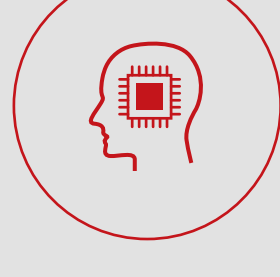




## Digital Solutions for Public Safety and Emergency Services

Public safety and emergency services are tasked with balancing a growing demand for citizen services with an ever-tightening budget.



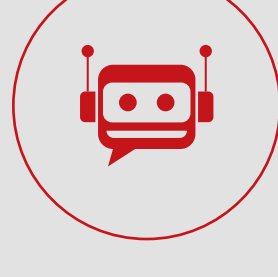
Artificial intelligence and data analytics identify problems before they happen.



Digital transformation lets you share information quickly, easily and securely with authorized individuals.



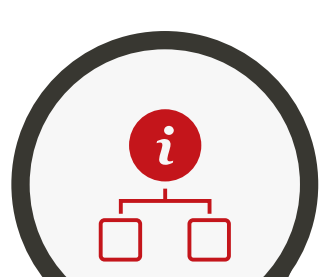
Digital solutions such as RPA, blockchain and internet of things give you improved operational efficiencies.



Chatbots can handle non-urgent enquiries, freeing up time and resources for actual emergencies.

### DIGITALLY TRANSFORMING YOUR PUBLIC SAFETY ORGANIZATION ENABLES YOU TO:

Break down information silos



Enhance service delivery



Ensure cyber security



Increase agility



Streamline processes and improve efficiency

Cut costs

Improve customer experience

### FUJITSU IS HERE TO HELP!



#### Artificial Intelligence (AI)

We will work with you to leverage the hyperconnected era of AI where machines can tackle mundane tasks, enabling workers to focus on value-add areas.



#### Data Sharing and Aggregation

We will use a "hub model" to ensure that authorized people can share information and access the data they need wherever and whenever they need it.



#### Internet of Things (IoT)

We will take advantage of IoT-sensored devices and individuals to apply Internet of Things (IoT) approaches to public safety solutions.



#### Data Analytics

Our Fujitsu Sholark solution enhances efficiency and accuracy within crime prevention by using AI to make intelligent connections faster and more effectively.



#### Cloud

We will help you move much of your infrastructure to the cloud, transforming your ability to collaborate.



#### Cyber Security

Security will be top of mind with every one of our solutions.



#### Geographic Information Systems (GIS)

We can work with you to set up a GIS that will provide the framework for communication, collaboration and analysis of issues based on location.



#### Robotic Process Automation (RPA)

RPA enables 24/7 processing, reducing the need for manual processing.



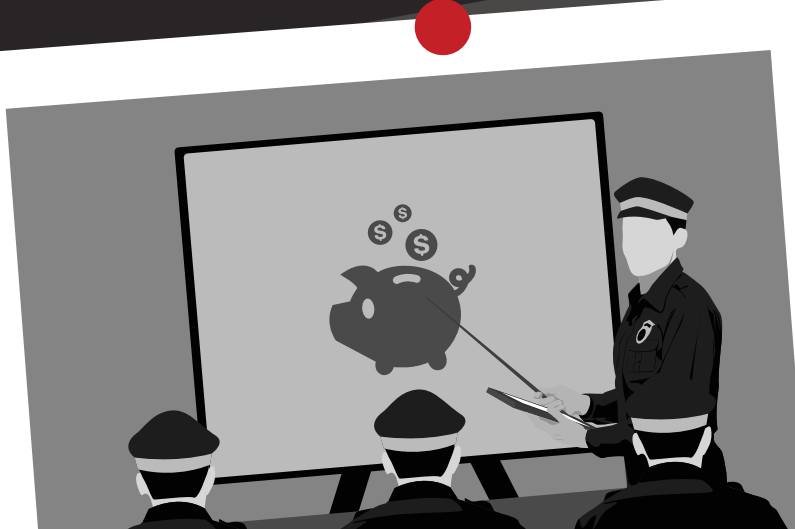
In 2016, 47% of general-purpose law enforcement agencies had acquired body-worn cameras. For large police departments, that number is 80%.\*



According to the National Centers for Environmental Information (NOAA), between January and April 2017, 52,903 wildfires burned over 2.4 million acres, representing the most wildfire activity seen since 2000.\*



When Eastern Canada was hit by floods in 2017, our GIS team provided a regional and global picture of hydrological impact, flooded areas, affected municipalities, road network status, flow thresholds, levels and courses of water, as well as requests for information of all kinds.



The Clarkstown Police Department saved \$20-\$30K in annual IT license costs after moving 230 officers and staff to a cloud platform for collaboration.

Ultimately, the most important part of any emergency service is its people. Technology is a critical enabler, helping steer you towards a safer future. We look forward to working with you to take your emergency services to a new level.

\*<https://www.fujitsu.com/us/microsite/public-safety>

#### FUJITSU AMERICA, INC.

Address: 1250 East Arques Avenue Sunnyvale, CA 94085-3470, U.S.A.  
Telephone: 800 831 3183 or 408 746 6000 Website: [www.fujitsu.com/us](http://www.fujitsu.com/us)  
Contact Form: [us.fujitsu.com/ContactFujitsu](http://us.fujitsu.com/ContactFujitsu)  
Have a question? Email us at: [AskFujitsu@us.fujitsu.com](mailto:AskFujitsu@us.fujitsu.com)

Fujitsu and the Fujitsu logo are trademarks or registered trademarks of Fujitsu Limited in the Canada and other countries. All other trademarks referenced herein are the property of their respective owners. The statements provided herein are for informational purposes only and may be amended or altered by Fujitsu America, Inc. without notice or liability. Product description data represents Fujitsu design objectives and is provided for comparative purposes; actual results may vary based on a variety of factors. Specifications are subject to change without notice.

Copyright© 2020 Fujitsu America, Inc.  
All rights reserved  
01-07-2020