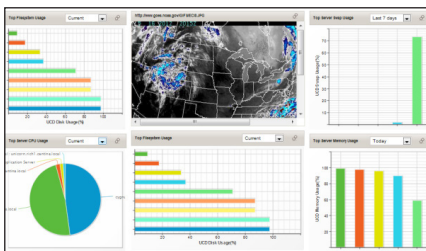


# Data Sheet

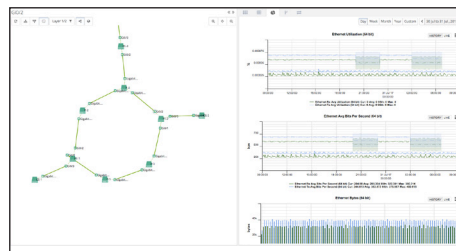
## vSure® Performance Management

### Next-Generation Network Performance Management

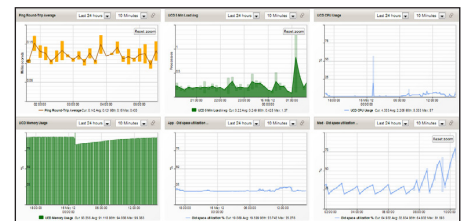
Configurable Dashboards



Performance Summaries



Capacity Planning Reports



#### Overview

vSure® Performance Management is a comprehensive, configurable solution that provides network performance monitoring, analysis and visualization to proactively identify and notify of potential problems, allowing users to optimize resources and plan operations for maximum ROI and network performance. This next-generation solution provides end-to-end performance visibility of multivendor, multitechnology, converged infrastructure enabling users to monitor, manage, analyze and predict network performance from a centralized system.

Performance Management empowers end-users to configure polling, thresholds, automations and notifications in real-time to meet the changing needs of today's dynamic networks.

Combined with the vSure foundation modules, Performance Management is a powerful resource that allows operators to focus on the availability, capacity and customer experience of network services and applications.

#### Business Value

- **Improves customer experience** with comprehensive, end-to-end network and service performance visibility
- **Reduces operations costs** by empowering users to perform administration and configuration tasks typically requiring advanced programmers
- **Improves profitability** through more effective optimization of resources and flexible capacity planning

#### Differentiators

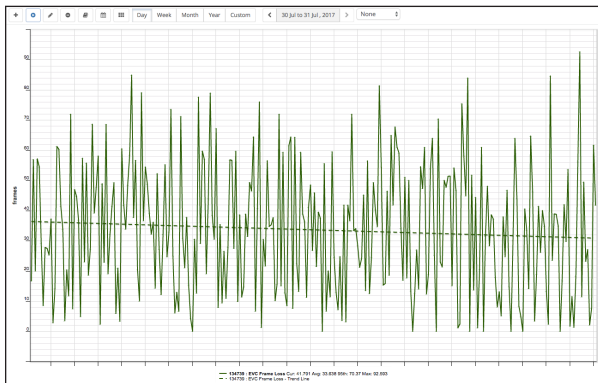
- Automatically discovers your network and services
- Alerts you before emergencies occur
- Configurable dashboards
- Off-the-shelf support for over 500 devices, systems and applications
- Web 2.0 client
- Scheduled generation and delivery of interactive reports with drill-down capability
- Configure and create custom performance metrics, KPIs, KQIs and reports without programming
- Dynamic and fixed performance thresholds
- Flexible collection periods
- Hundreds of available off-the-shelf application monitors
- Support for any protocol: SNMP, TL1, ASCII, file-based
- Interactive reports & performance charts
- Carrier-class scalability to support any size network

# Out-of-the-box Performance Management

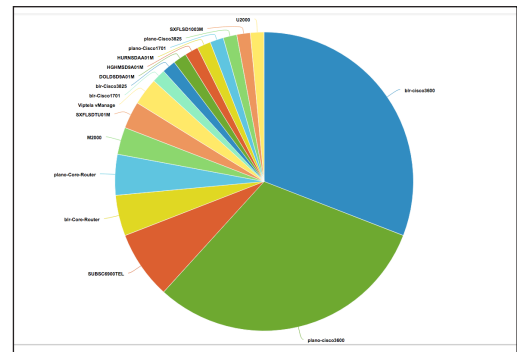
## vSure Performance Management Advantages

- Monitors and analyzes, in real-time, network performance statistics for telecom, cable, wireless, transport, video and IT infrastructure
- Provides a customizable, intuitive web-based interface for easy configuration on a user-by-user basis
- Eases troubleshooting with the topology map views, detailed, top-N or summary reports and configurable dashboard views of your network
- Enables flexible user-defined performance KPIs and KQIs, thresholds, alerting and notification of events based on configurable parameters
- Interactive performance charts with dynamic aggregation and time frames
- Integrates easily with existing and emerging technologies
- Provides real-time statistics for rapid troubleshooting and continuous monitoring of operations data for monitoring service quality
- Predefined and configurable reporting, network and service views, and trending provide the flexibility and ease of use to make the most of collected data
- Configurable application monitoring and synthetic transaction monitoring
- Support for all networking technologies including SONET, DWDM, IP/MPLS, Ethernet, IP-VPN, ATM, DSL, WiFi, LTE and IPTV across SNMP and TL1 protocols
- User-defined thresholds for occurrence, time-based, min/max and dynamic thresholds
- Scalable and configurable monitoring and processing of all device metrics including availability, utilization, response time, percentile, jitter, transmitted and dropped traffic, latency, packet loss, SNR, errors in/out and more
- Carrier-class high availability and scalability

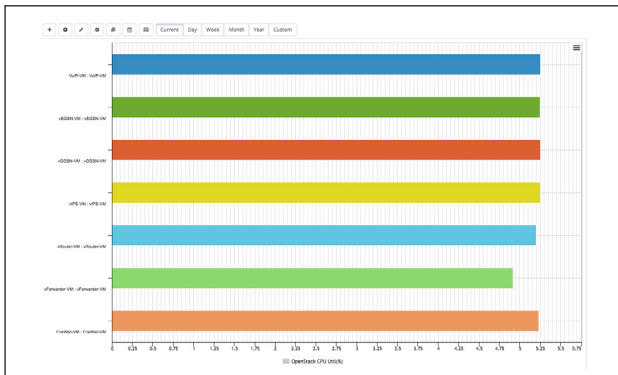
Configurable Performance Charts



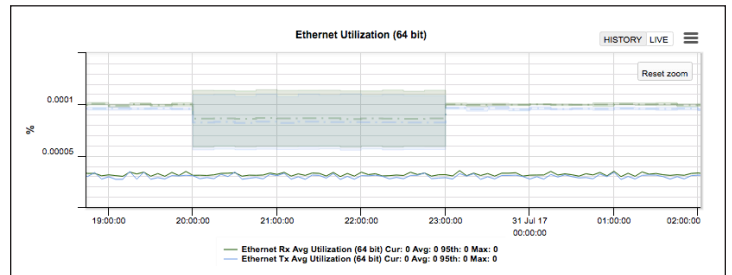
Configurable Report Graphics



Top 10 Reports



Automated Performance Baseline and Alerting



# Comprehensive Multivendor Performance Assurance and SLA Management

vSure is the next generation in service assurance and service quality management. This modular software suite can dramatically improve network performance, Service-Level Agreement (SLA) conformance, and customer experience. vSure offers a single solution for managing any infrastructure: network, systems, applications, facilities and security.

## Low Maintenance, Dynamic, Technology-Independent

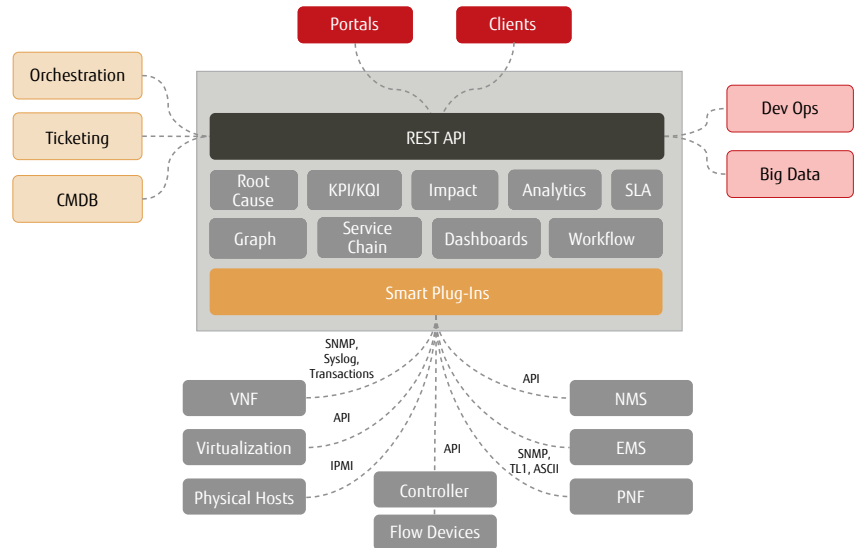
vSure deploys rapidly and can be maintained and extended without programming or advanced training. The system also offers unprecedented scalability to manage any size network. End-to-end services can be automatically discovered and kept current to monitor Key Performance Indicators (KPIs) and automate notifications based on configurable thresholds. Network operations technicians can configure a custom service assurance solution to view, monitor and report on network health and performance in real time.

With vSure, service providers experience:

- Dramatically lower solution deployment times
- Reduced ongoing configuration, customization and maintenance workload
- Simplified advanced configuration via unique point-and-click GUI interface
- Easy modification of system rules on-the-fly
- Increased productivity with minimal training
- Standard, no-maintenance Web browser access

## vSure Modules

- **SLA Manager** – SLA creation based on service quality and availability; conformance period; and warning and violation notifications
- **Service Vision** – Self-maintaining auto-discovery and mapping of network services topology from a variety of sources, regardless of vendor
- **Ethernet Assurance** – Monitoring and visualization of quality metrics such as availability, delay, jitter, frame loss, and custom-defined metrics



- **Cable Assurance** – Comprehensive monitoring of the cable broadband infrastructure from CMTS to cable modem/MTA with core-to-customer passive network mapping and high-speed polling to identify issues in seconds
- **Performance Management** – Real time configuration of polling, thresholds, automations and notifications to meet the changing needs of today's dynamic networks
- **Fault Management** – Alarm monitoring of every device in the network, regardless of vendor, technology or protocol

## Fujitsu Network Communications, Inc.

2801 Telecom Parkway, Richardson, TX 75082

Tel: 888.362.7763

[us.fujitsu.com/telecom](http://us.fujitsu.com/telecom)