



Printer Driver

Installation Guide

November 2014
Version 1.00

Preface

This document explains the procedure of the installation and the Confirmation of ZXP-7 Driver (Hereafter, it is written, "This driver")

■ Abbreviations and generic terms used

This document uses the following abbreviations and generic terms.

Name	Abbreviation used in this document
Microsoft® Windows® 7 Professional	Windows 7
Terminals where Windows 7 has been installed Personal computer	PC
Reader/writer devices	"Reader device"

■ Trademarks

- Microsoft, Windows, .NET Framework, and .NET Compact Framework are registered trademarks of Microsoft Corporation in the United States and other countries.
- Other company names and product names in this manual are trademarks or registered trademarks of respective companies. Note that system names and product names in this manual are not always followed by trademark symbols such as ® or ™.

■ ATA (Air Transport Association of America) Spec 2000 Chapter 9-5

- This tool is designed to read and write data from and to tags in compliance with the specification for Radio Frequency Identification (RFID) on Parts in ATA Spec2000 Chapter 9-5.

■ High Risk Activity

- This product is designed and manufactured as contemplated for general use, including without limitation, general office use, personal use and household use, but is not designed and manufactured as contemplated for use accompanying fatal risks or dangers that, unless extremely high safety is secured, could lead directly to death, personal injury, severe physical damage or other loss (hereinafter called "High Safety Required Use"), including without limitation, nuclear reaction control, aircraft flight control, air traffic control, mass transport control, life support, and weapon launch control . The customer shall not use this product without securing the sufficient safety required for the High Safety Required Use.

■ Notes on export procedures

- When exporting or providing this product and this document, check the regulations under the Foreign Exchange and Foreign Trade Law and the laws and regulations relating to US export control, and complete the necessary procedures.

■ Screenshots and illustrations

- The screenshots and illustrations in this manual are only examples, and the actual screens may be slightly different depending on the environment that you are using.
- The screenshots used in the explanations in this manual are from a Windows 7 environment.
- These screenshots and sample task files are from a version of the tool that was still in development, and so may differ slightly from the actual version.

■ How to obtain third-party software (such as Zebra products)

- For information about how to obtain third-party software, make inquiries with Fujitsu Customer Support.

■ Request

- No part of this document may be reproduced or reused for other purposes without the express written permission of Fujitsu Limited.
- The content of this document may change without prior notice.

■ Revision history

Edition	Date issued	Changes
Version 1.00	November 2014	Initial version released.

CONTENTS

1 Installation and Uninstallation	1
1.1 Installing the ZXP-7 Driver	1
1.2 Uninstalling the ZXP-7 Driver	14

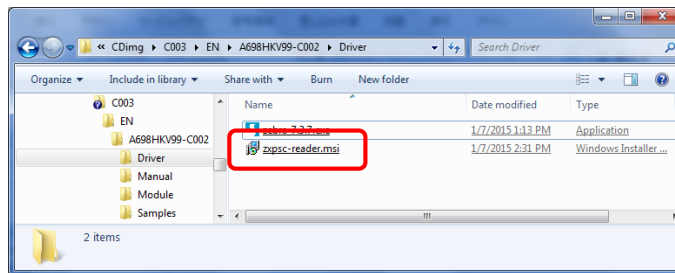
1 Installation and Uninstallation

1.1 Installing the ZXP-7 Driver

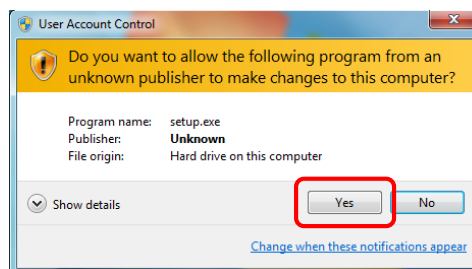
If the following operating procedure completes normally, ZXP-7 Driver application will have been installed.

■ Operating procedure

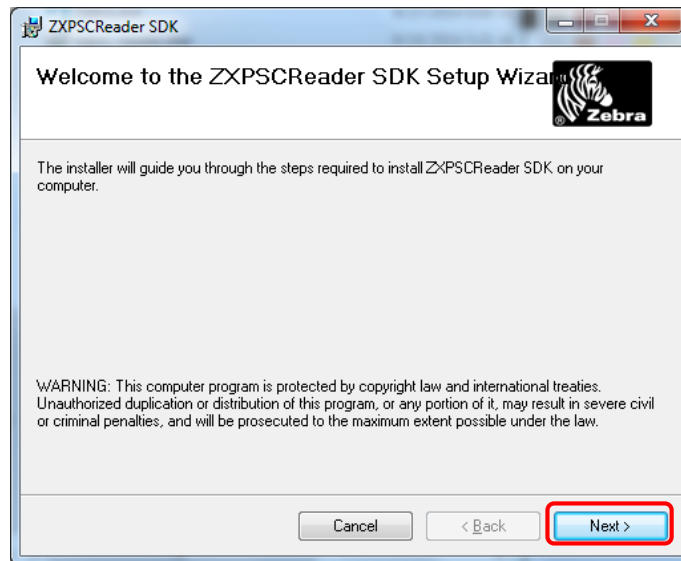
- (1) Turn on the PC where this tool is to be installed and log in as either the PC administrator or a member of the Administrators group.
- (2) Insert the setup CD that comes with this tool into the CD drive on the PC.
- (3) Open the CD using Explorer, and then double-click "**zxpssc-reader.msi**".
"Zxpssc-reader.msi" is Zebra Card SDK for ZXP Series 7 and 8 Printers.
"Zebra Card SDK for ZXP Series 7 and 8 Printers" is downloadable from Web Site of the Zebra Co..



- (4) If the following warning dialog box is displayed, click the **Yes** button.



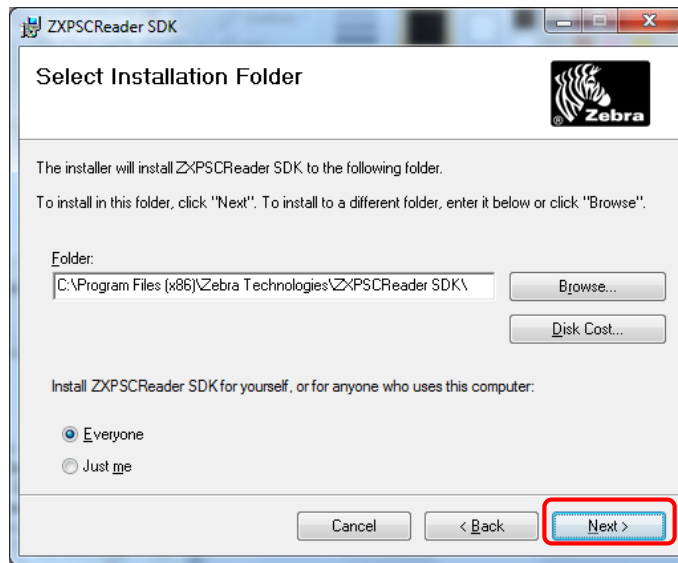
(5) Click the **Next** button.



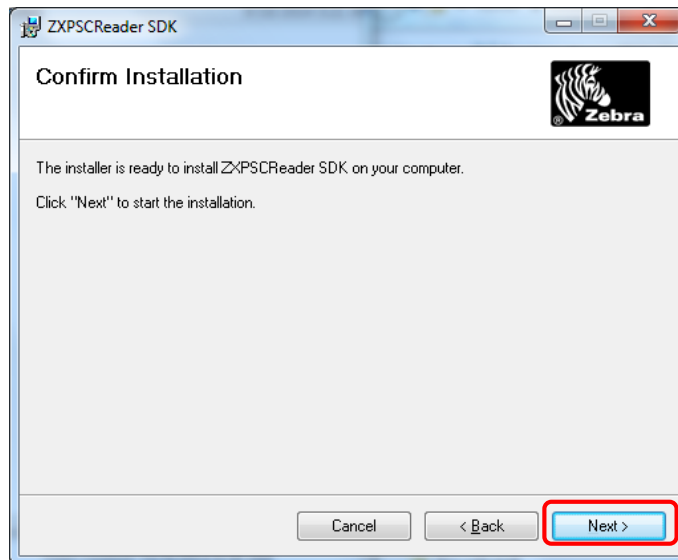
(6) Select "I Agree" and then click the **Next** button.



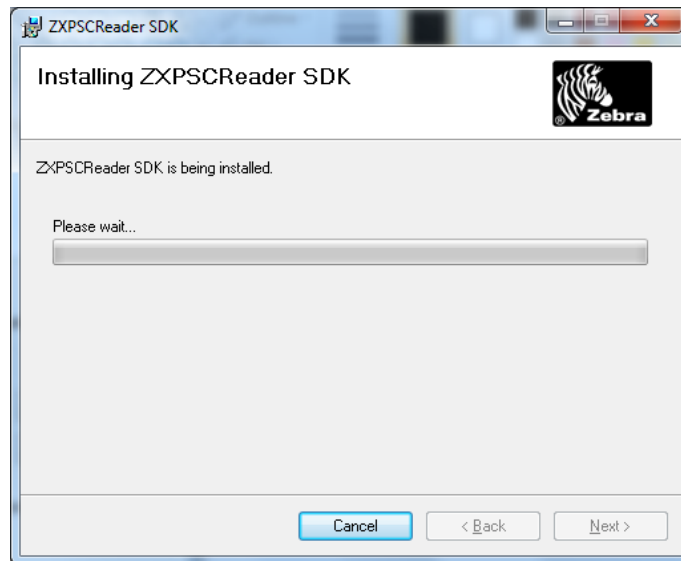
(7) Click the **Next** button.



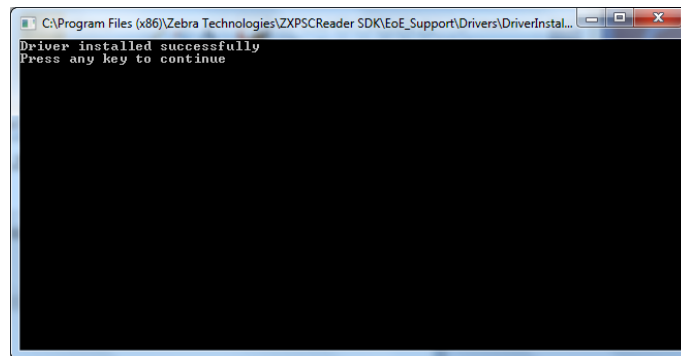
(8) Click the **Next** button.



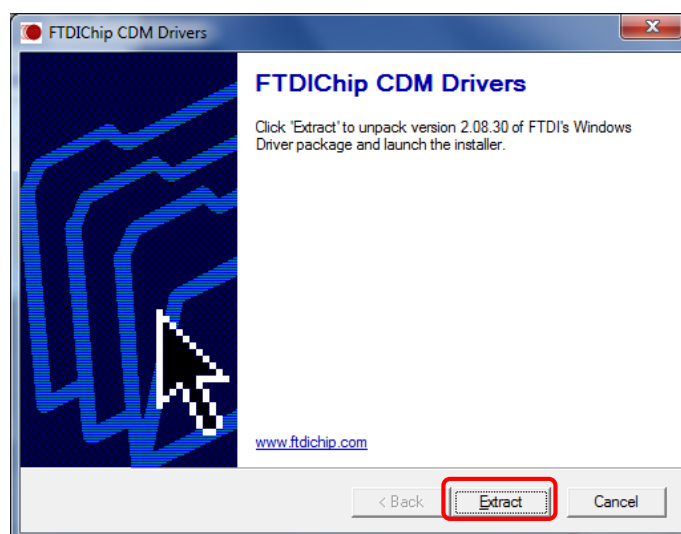
(9) The installation of this driver will start.



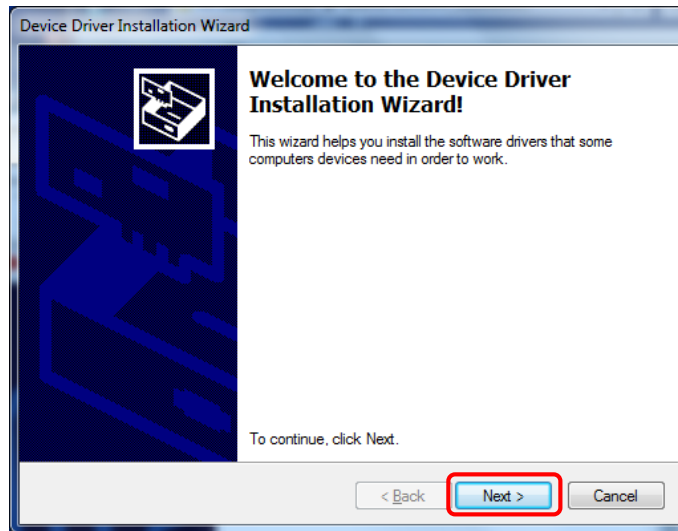
(10) Select Command Prompt Window, press any key.



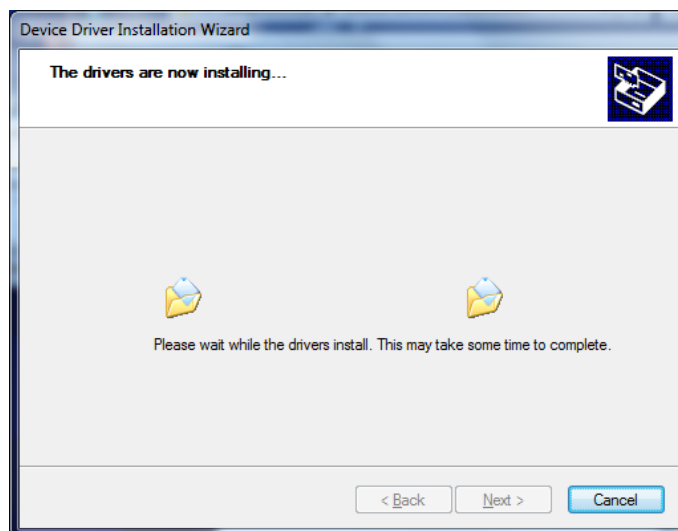
(11) Select "FTDICHip CDM Drivers" Window, click the **Extract** button



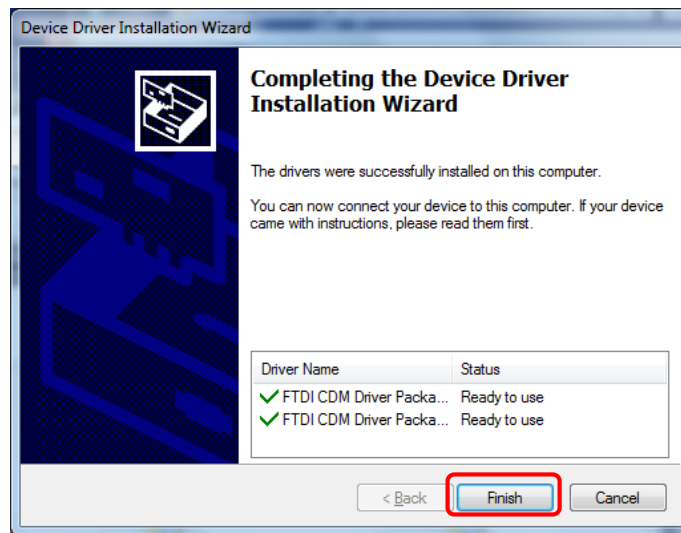
(12) Click the **Next** button.



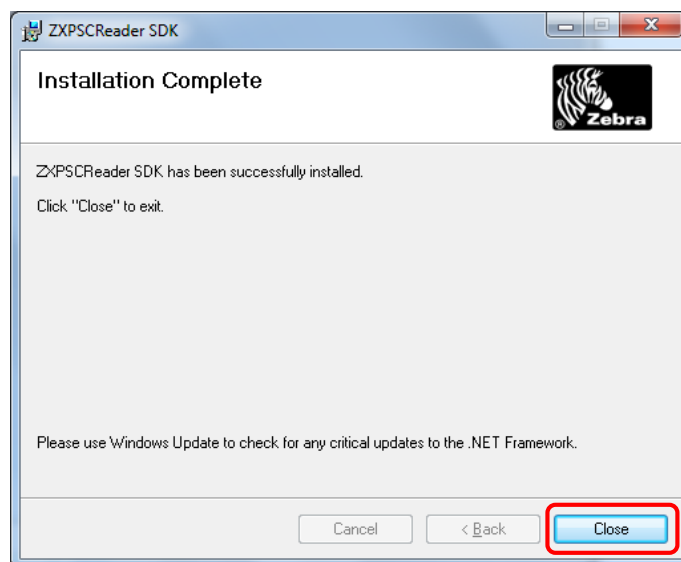
(13) The installation of this driver will start.



(14) After the installation completes, click the **Finish** button.

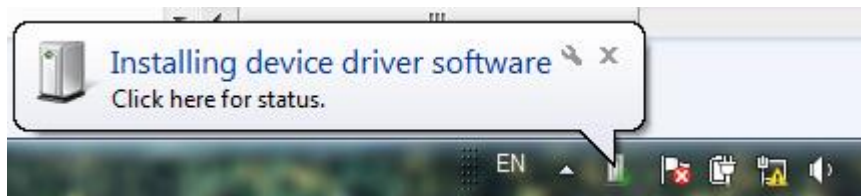


(15) After the installation completes, click the **Close** button.



(16) The power supply of the printer is turned on, and the USB cable is connected with PC.

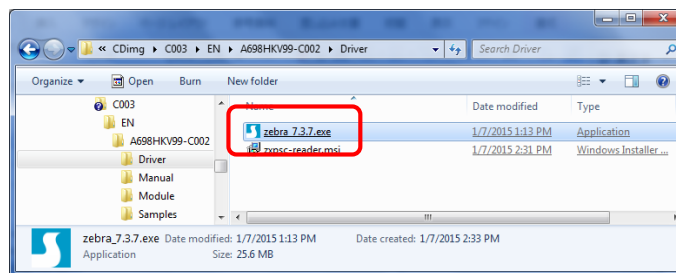
(17) The driver of the printer is installed.



(18) There is no problem though the installation of the printer driver fails.

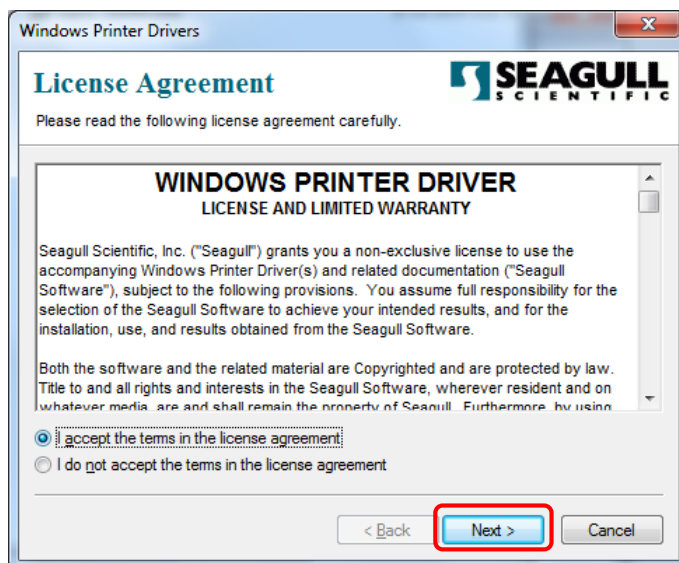


(19) Double-click "Zebra_n.n.n.exe".

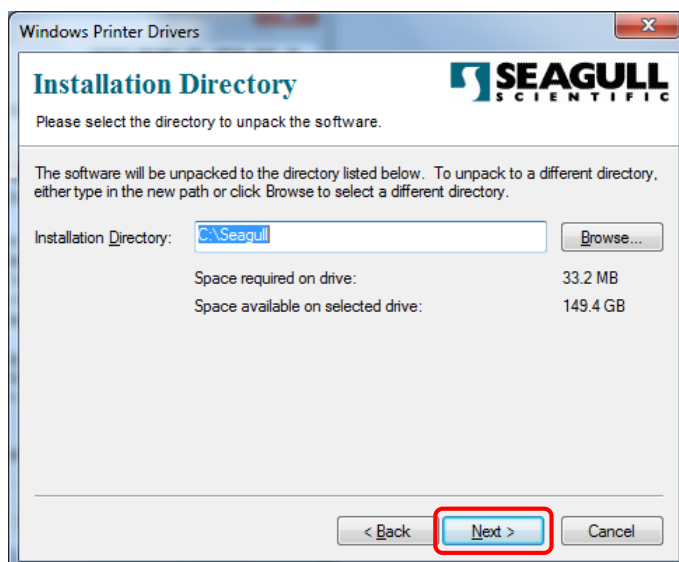


"n.n.n" of "Zebra_n.n.n.exe" shows driver's Version.

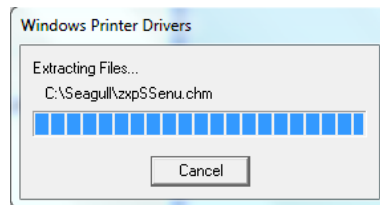
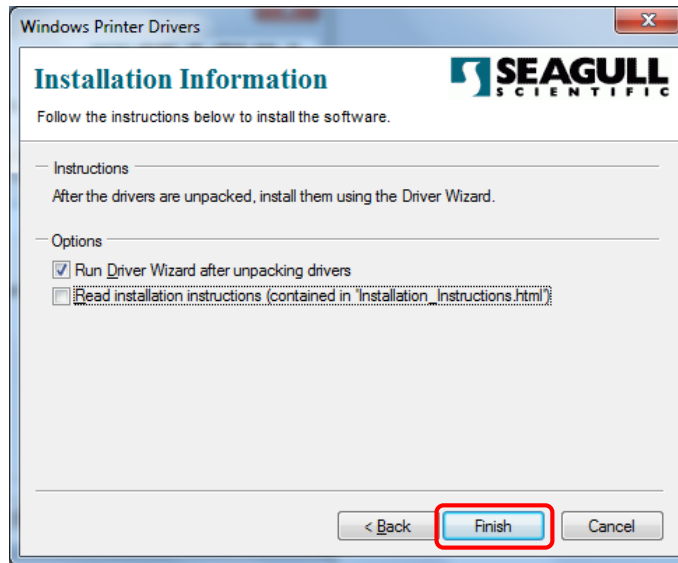
(20) Select "I accept the terms in the license agreement", click the **Next** button.



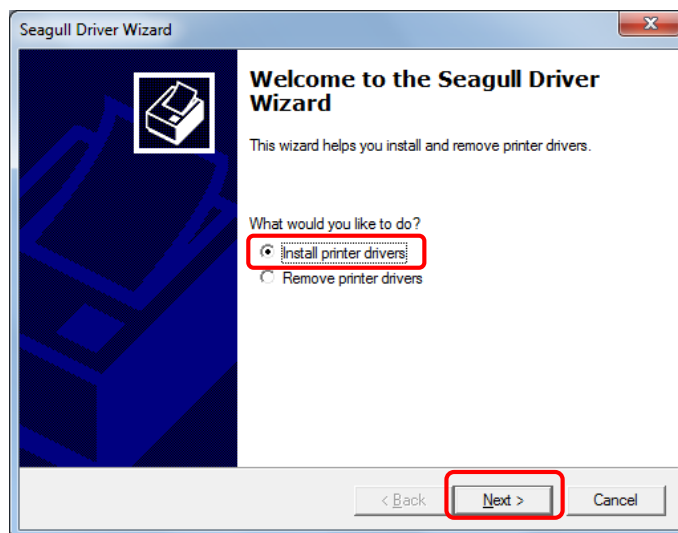
(21) Click the **Next** button.



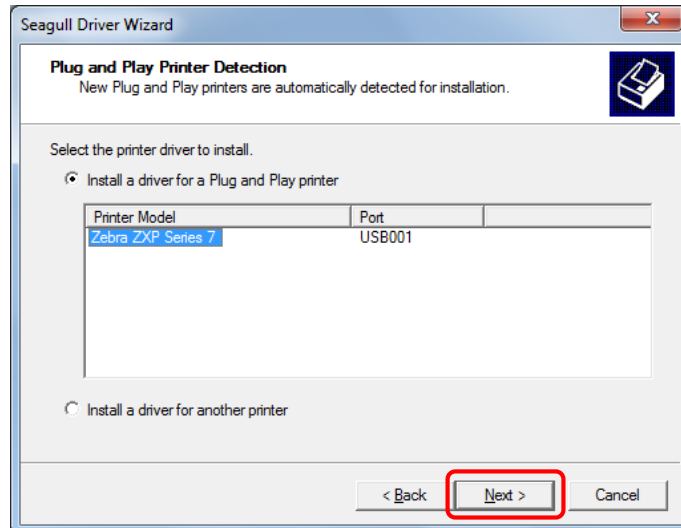
(22) Click the **Finish** button.



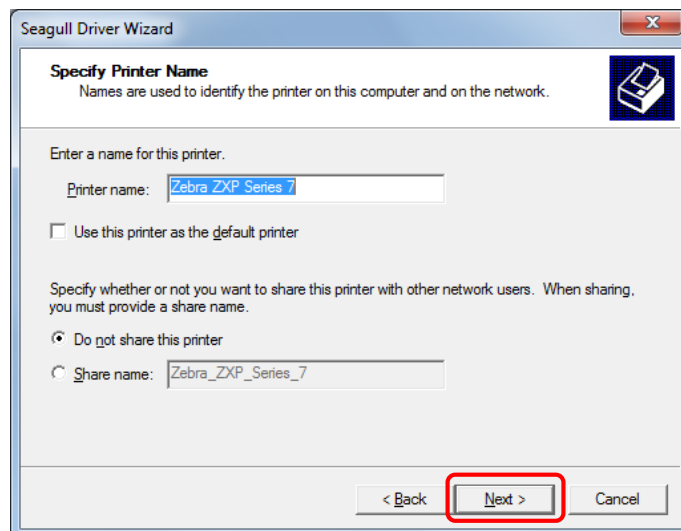
(23) Select “Install printer drivers”, click the **Next** button.



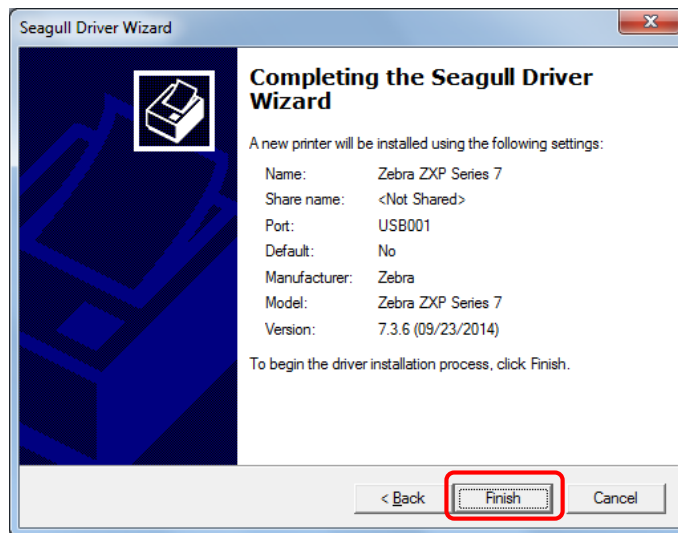
(24) Click the **Next** button.



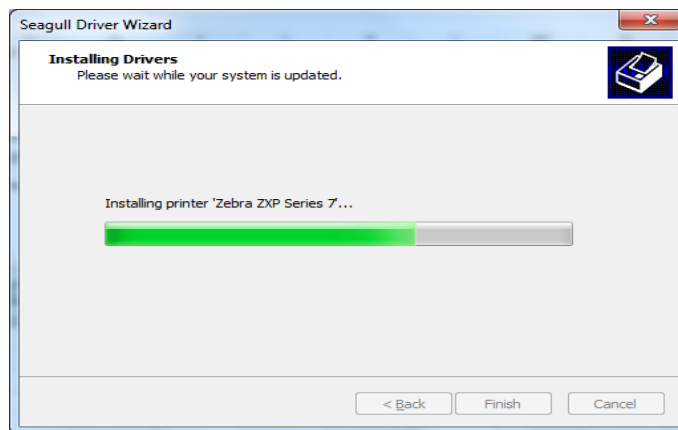
(25) Click the **Next** button.



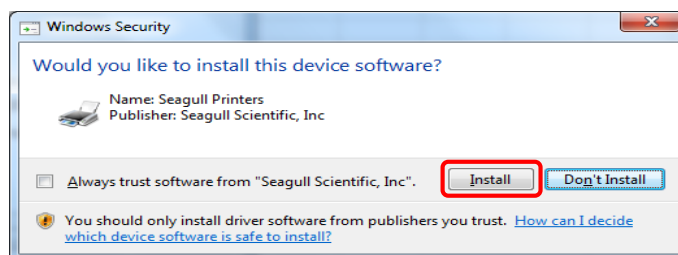
(26) Click the **Finish** button.

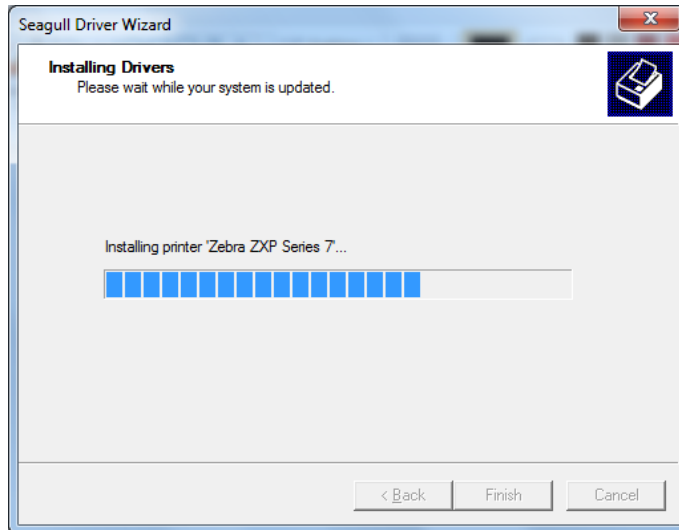


(27) The installation of this driver will start.

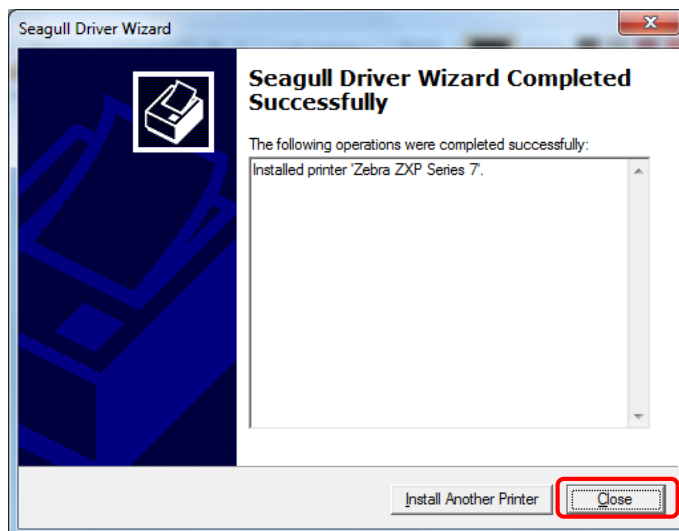


(28) Click "Install".

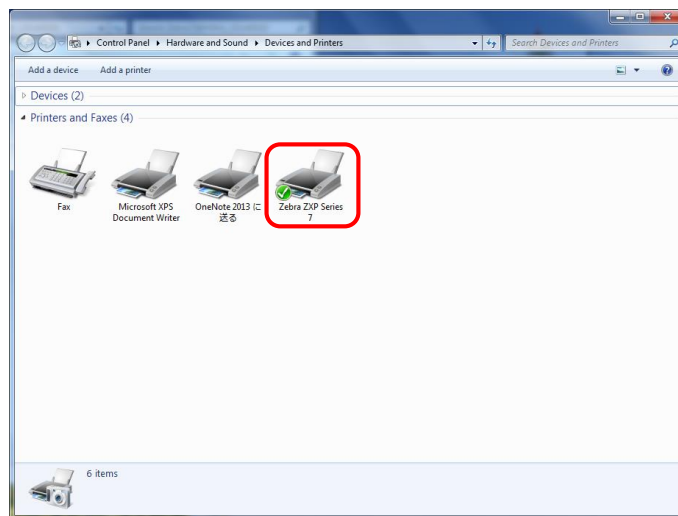




(29) After the installation completes, click the **Close** button.



(30) Click “Devices and Printers” in Start Menu.



This completes the installation procedure for this driver.

Next, the setting of the printer is executed.

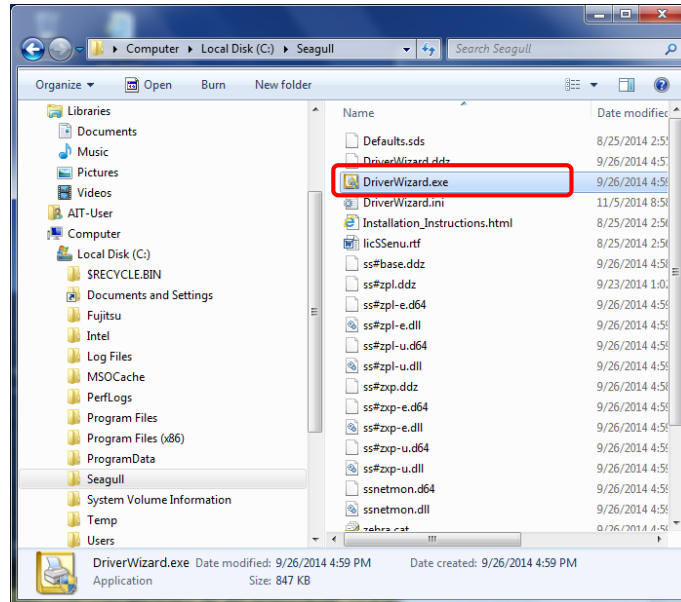
The setting method of the printer has been described to “RFID Label Design and Encoding Management Pro Installation Guide”.

1.2 Uninstalling the ZXP-7 Driver

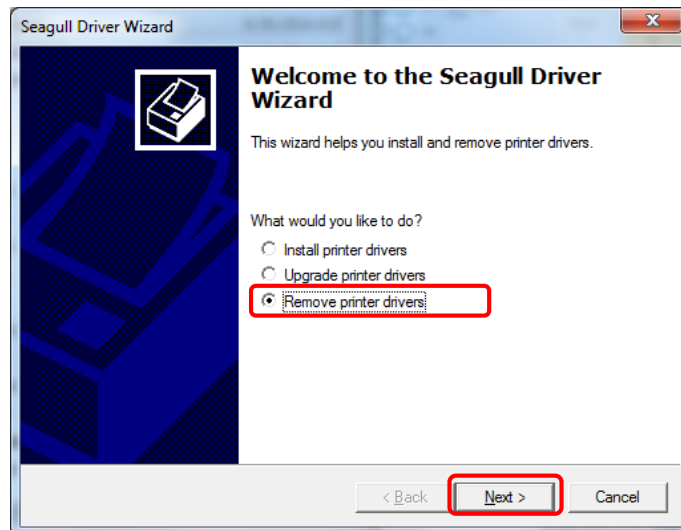
This section explains how to uninstall the ZXP-7 Driver.

■ Operating procedure

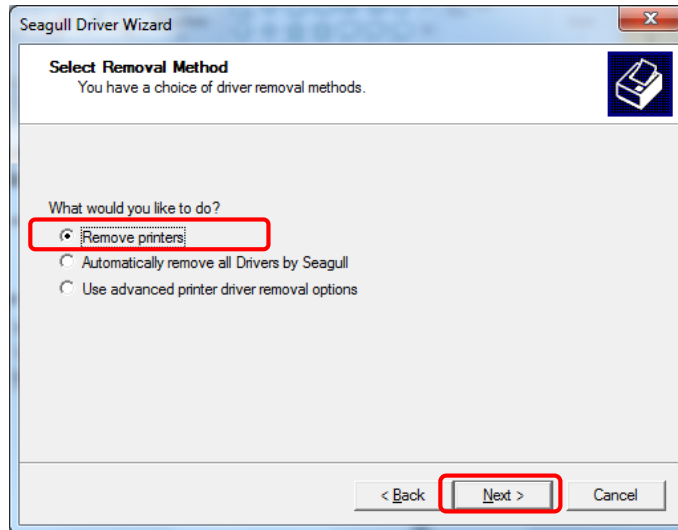
- (1) Double-click "C:\Seagull\DriverWizard.exe".



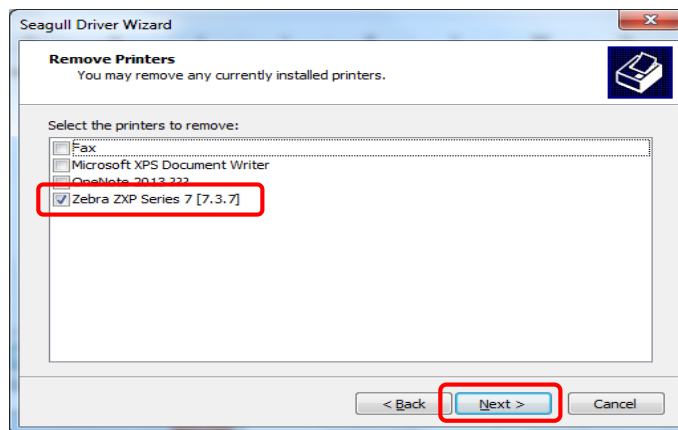
- (2) Select "Remove printer drivers", click the **Next** button.



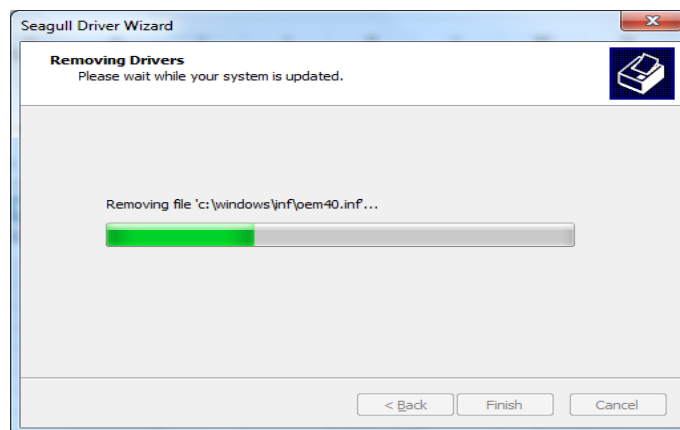
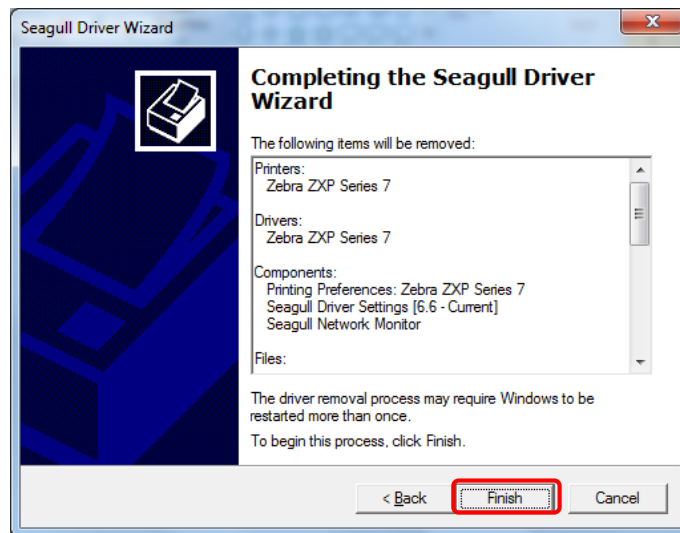
(3) Select “Remove printers”, click the **Next** button.



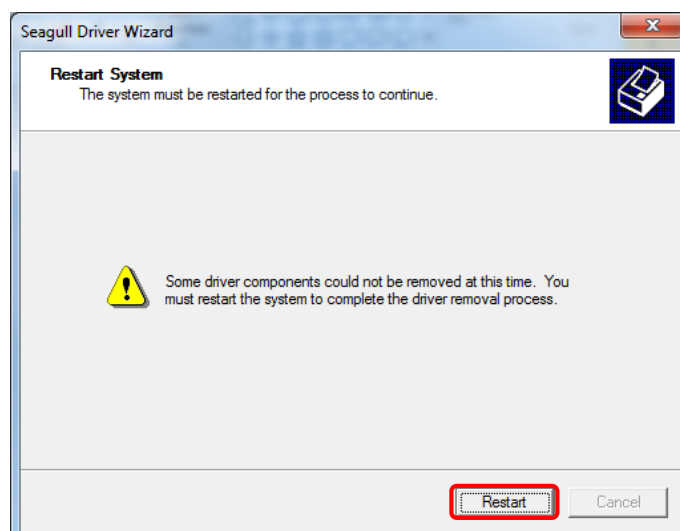
(4) Select “Zebra ZXP Series 7”, click the **Next** button.



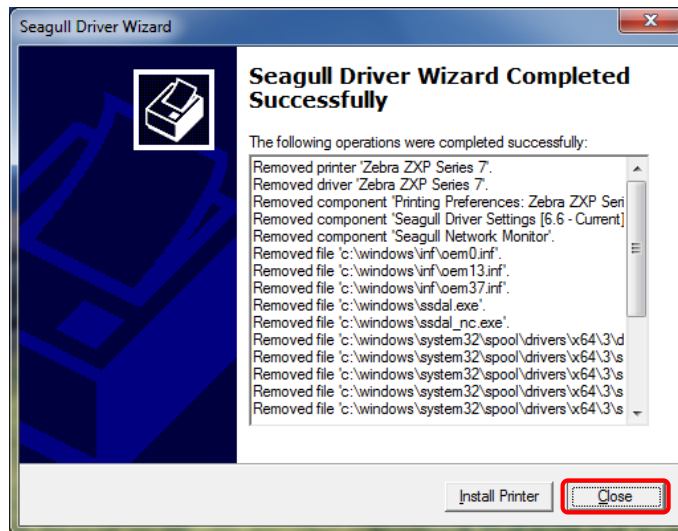
(5) Click the **Finish** button.



(6) Click the **Restart** button.



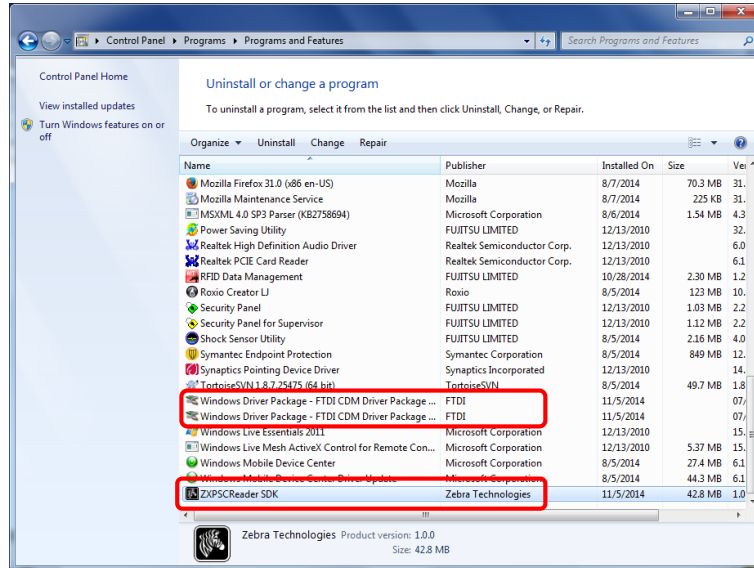
(7) After reboot PC, click the **Close** button.



(8) Delete "C:\Seagull" Folder.

(9) The following three programs are deleted from "Control Panel" by "Programs and Features" of "Programs".

- ZXPSCReader SDK
- Windows Driver Package – FTDI CDM Driver Package
- Windows Driver Package – FTDI CDM Driver Package



This completes the uninstallation procedure for this driver.