



# RFID Data Management Pro for Fixed Readers Installation Guide

October 2015  
Version 2.32



# Preface

This document explains the procedure of the installation and the Confirmation of RFID Data Management Pro (Hereafter, it is written, "This tool") for Fixed Reader. Be sure to read this manual before using this tool.

## ■ Abbreviations and generic terms used

This document uses the following abbreviations and generic terms.

Name	Abbreviation used in this document
Microsoft® Windows® 7 Professional	Windows 7
Microsoft® Windows® 8.1 Professional	"Windows 8.1"
Terminals where Windows 7 or Windows 8.1 has been installed Personal computer	PC
Reader/writer devices	"Reader device"
RFID tags	Tag
Fujitsu's RFID Integrated Label - 8Kbyte (Large/Medium/Small)	"Large capacity RFID tag" or "high memory tag"
Fujitsu's RFID Integrated Label - 1Kbyte (Large/Medium/Small) Fujitsu's 2-kilobit RFID tags	Tag
NXP's RFID tags with a 240-bit EPC area and a 512-bit user area, and Impinj's RFID tags with a 128-bit EPC area and a 512-bit user area	"Small-capacity RFID tags", "small-capacity tags", "low memory tags" or just "tags"

## ■ Trademarks

- Microsoft, Windows, .NET Framework, and .NET Compact Framework are registered trademarks of Microsoft Corporation in the United States and other countries.
- Other company names and product names in this manual are trademarks or registered trademarks of respective companies. Note that system names and product names in this manual are not always followed by trademark symbols such as ® or ™.

## ■ ATA (Air Transport Association of America) Spec 2000 Chapter 9-5

- This tool is designed to read and write data from and to tags in compliance with the specification for Radio Frequency Identification (RFID) on Parts in ATA Spec2000 Chapter 9-5.

## ■ High Risk Activity

- This product is designed and manufactured as contemplated for general use, including without limitation, general office use, personal use and household use, but is not designed and manufactured as contemplated for use accompanying fatal risks or dangers that, unless extremely high safety is secured, could lead directly to death, personal injury, severe physical damage or other loss (hereinafter called "High Safety Required Use"), including without limitation, nuclear reaction control, aircraft flight control, air traffic control, mass transport control, life support, and weapon launch control. The customer shall not use this product without securing the sufficient safety required for the High Safety Required Use.

## ■ Notes on export procedures

- When exporting or providing this product and this document, check the regulations under the Foreign Exchange and Foreign Trade Law and the laws and regulations relating to US export control, and complete the necessary procedures.

## ■ Screenshots and illustrations

- The screenshots and illustrations in this manual are only examples, and the actual screens may be slightly different depending on the environment that you are using.
- The screenshots used in the explanations in this manual are from a Windows 7 environment.
- These screenshots and sample task files are from a version of the tool that was still in development, and so may differ slightly from the actual version.

## ■ How to obtain third-party software (such as Motorola products)

- For information about how to obtain third-party software, make inquiries with Fujitsu Customer Support.

## ■ Request

- No part of this document may be reproduced or reused for other purposes without the express written permission of Fujitsu Limited.
- The content of this document may change without prior notice.

## ■ Revision history

Edition	Date issued	Changes
Version 1.00	April 2014	This manual separated from the user's guide.
Version 1.10	June 2014	Changed product name
Version 2.20	October 2014	Commercialization version
Version 2.30	March 2015	Support for Windows 8.1
Version 2.31	June 2015	Installation procedure changed
Version 2.32	October 2015	Installation procedure changed & FX7500 addition

# CONTENTS

---

<b>1 Installation Prerequisites.....</b>	<b>1</b>
1.1 Licensing Request.....	1
<b>2 Installation and Uninstallation.....</b>	<b>2</b>
2.1 Installing the RFID Data Management Pro for Fixed Readers .....	2
2.2 Uninstalling the RFID Data Management Pro for Fixed Readers.....	6
<b>3 Setting up Motorola FX7500 .....</b>	<b>9</b>

---



# 1 Installation Prerequisites

## 1.1 Licensing Request

Before starting the installation of this tool, please send the licensing request to Fujitsu Technical Support and receive the license key for this tool.

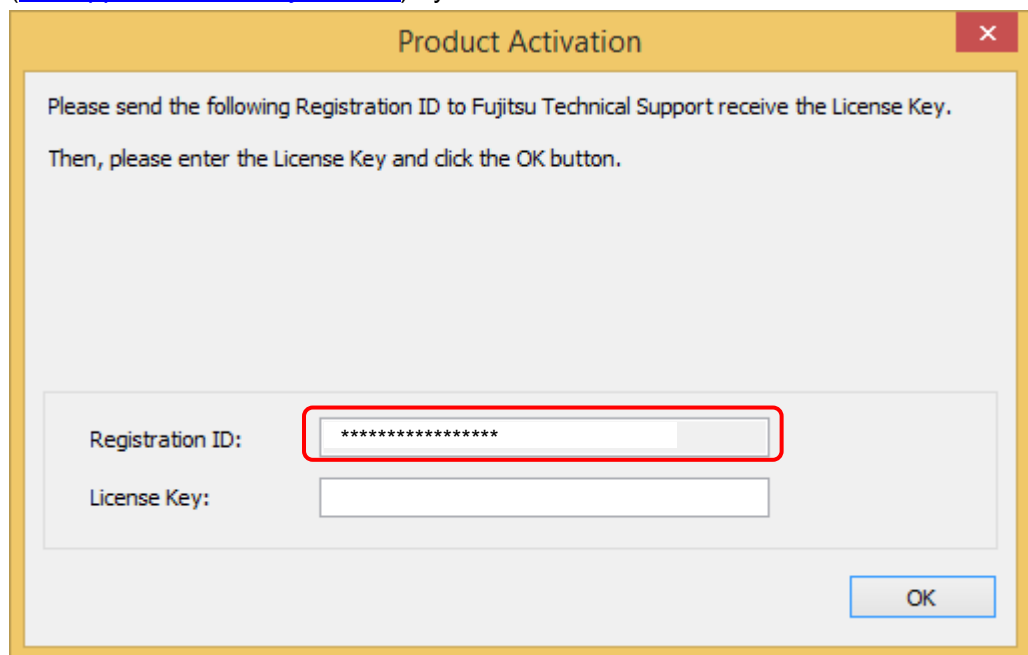
- 
- |                  |   |
|------------------|---|
| <b>! Caution</b> | • If you already received the license key from Fujitsu Technical Support, please skip this section. |
|------------------|---|
- 

### ■ Operating procedure

- (1) Turn on the PC where this tool is to be installed and log in as either the PC administrator or a member of the Administrators group.
- (2) Insert the setup CD that comes with this tool into the CD drive on the PC.
- (3) Open the CD using Explorer, and then double-click "Setup.exe" in the "Module" folder.

- 
- |                  |   |
|------------------|---|
| <b>! Caution</b> | • If the PC does not have a CD drive, use another PC to copy the content of the "Module" folder on the CD to USB memory (or a similar device), and then execute "Setup.exe" from there. |
|------------------|---|
- 

- (4) Check the "Registration ID" and send the information to Fujitsu technical support ([ait-support@ml.css.fujitsu.com](mailto:ait-support@ml.css.fujitsu.com)) by email.

A screenshot of a 'Product Activation' dialog box. The title bar is yellow with a red 'X' button. The main area has a light gray background. It contains the text: 'Please send the following Registration ID to Fujitsu Technical Support receive the License Key. Then, please enter the License Key and click the OK button.' Below this text are two input fields. The first is labeled 'Registration ID:' and contains a redacted value '\*\*\*\*\*'. The second is labeled 'License Key:' and is empty. An 'OK' button is located at the bottom right of the dialog box.

Product Activation

Please send the following Registration ID to Fujitsu Technical Support receive the License Key.  
Then, please enter the License Key and click the OK button.

Registration ID: \*\*\*\*\*

License Key:

OK

- 
- |                     |  |
|---------------------|--|
| <b>□ Reference:</b> | • After receiving the "Registration ID", Fujitsu technical support will send the "License Key" by email. |
|---------------------|--|
-

## 2 Installation and Uninstallation

### 2.1 Installing the RFID Data Management Pro for Fixed Readers

If the following operating procedure completes normally, the RFID Data Management Pro for Fixed Readers application will have been installed.

#### ■ Operating procedure

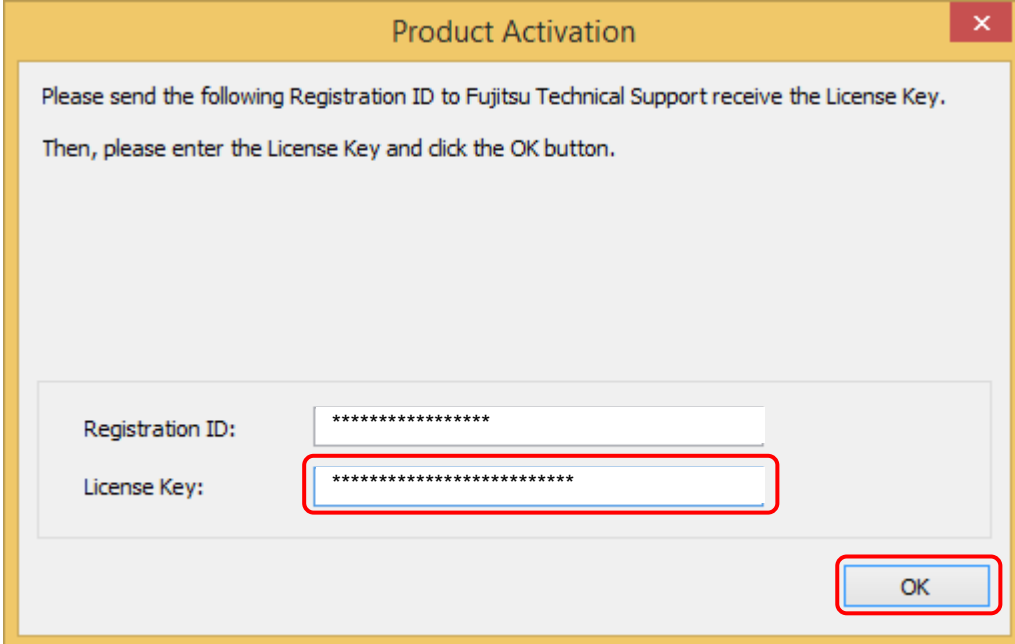
- (1) Turn on the PC where this tool is to be installed and log in as either the PC administrator or a member of the Administrators group.
- (2) Perform the procedure in "3 Setting up Motorola".
- (3) In the case of Windows 8 or later version, install .Net Framework 3.5 (includes .Net 2.0 and 3.0) in advance.
- (4) Insert the setup CD that comes with this tool into the CD drive on the PC.
- (5) Open the CD using Explorer, and then double-click "Setup.exe" in the "Module" folder.

---

**! Caution**      • If the PC does not have a CD drive, use another PC to copy the content of the "Module" folder on the CD to USB memory (or a similar device), and then execute "Setup.exe" from there.

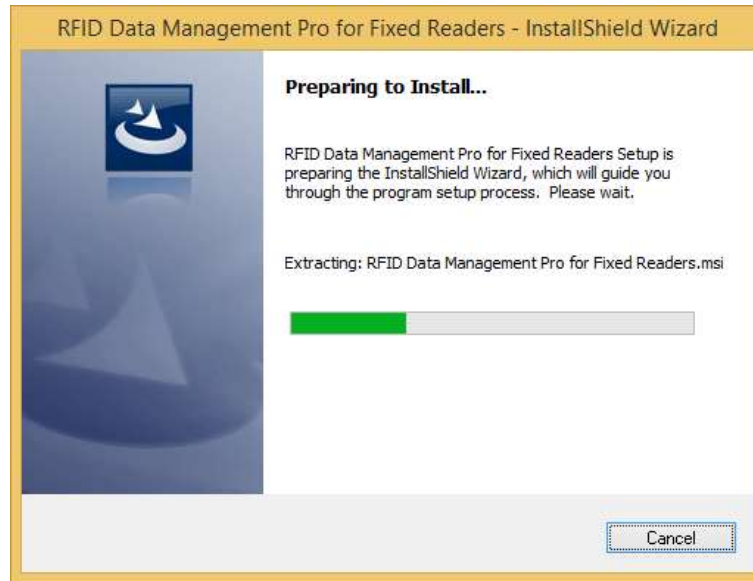
---

- (6) Enter the License Key and click the **OK** button.

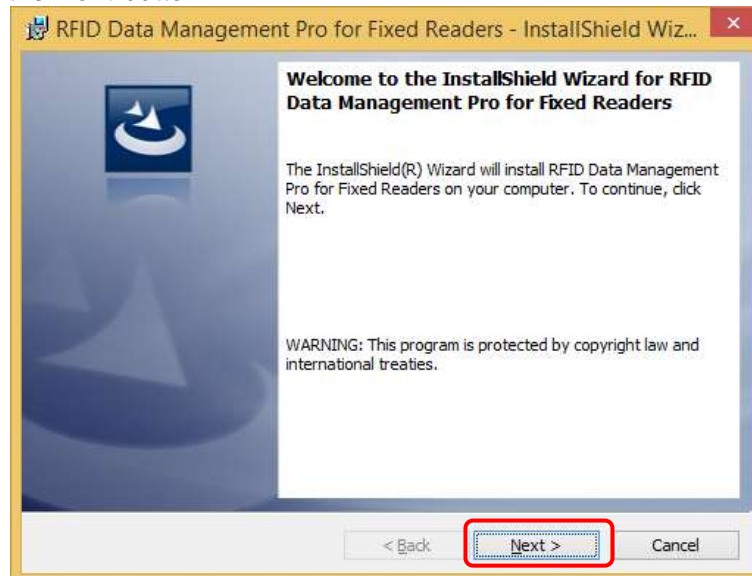
A screenshot of a 'Product Activation' dialog box. The title bar is yellow with a red 'X' button. The main area has a light gray background. It contains the text: 'Please send the following Registration ID to Fujitsu Technical Support receive the License Key. Then, please enter the License Key and click the OK button.' Below this, there are two input fields. The first is labeled 'Registration ID:' and contains a masked string of asterisks. The second is labeled 'License Key:' and also contains a masked string of asterisks; this field is highlighted with a red rectangular border. At the bottom right, there is an 'OK' button, which is also highlighted with a red rectangular border.



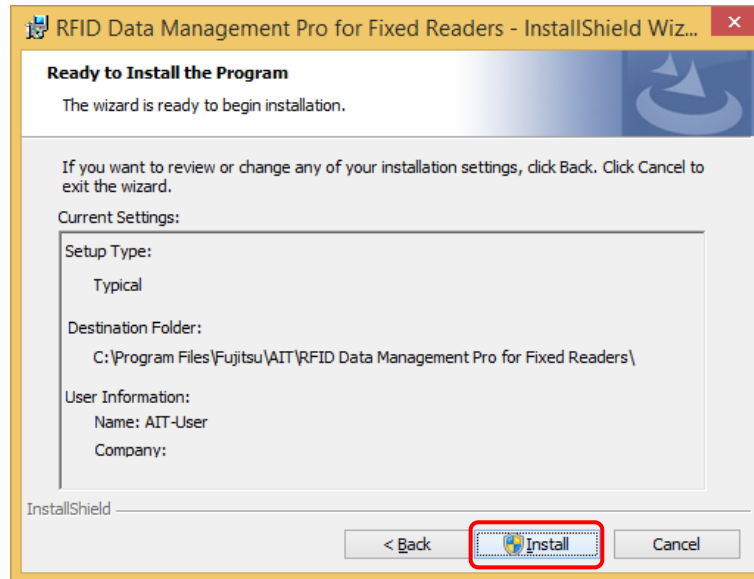
(7) The installation starts.



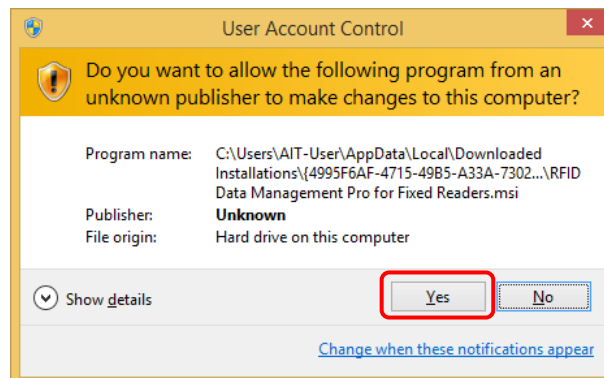
(8) Click the **Next** button.



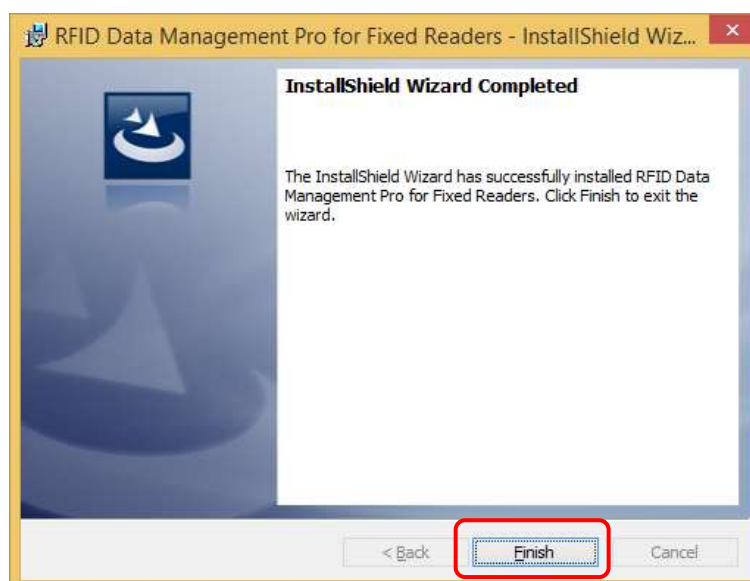
(9) "Install" button is clicked.



(10) If the following warning dialog box is displayed, click **Yes**.



(11) After the installation completes, click the **Finish** button.



- (12) When the installation completes, **Fujitsu / RFID Data Management Pro** will be registered under the **Start / Programs** menu. The following icon will also be created on the desktop: **RFID Data Management Pro**.

Tool	Name of the desktop icon
RFID Data Management Pro	RFID Data Management Pro

- (13) Remove the setup CD from the PC.  
(14) Restart the PC manually.

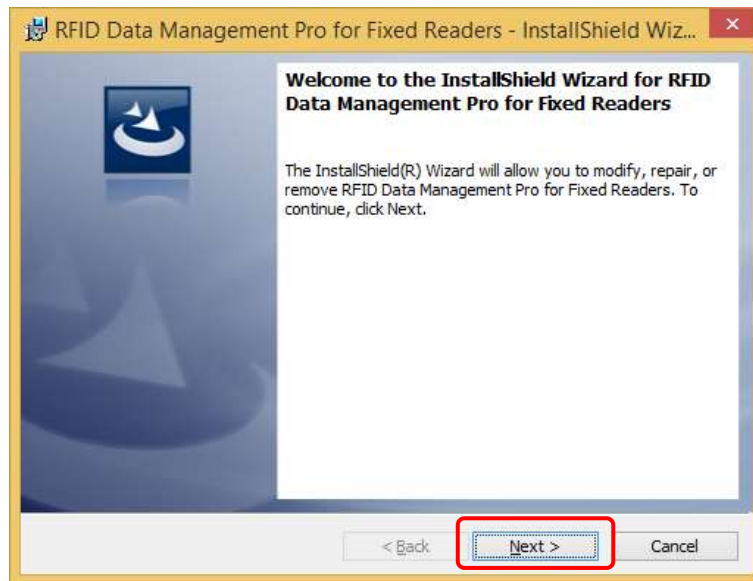
This completes the installation procedure for this tool.

## 2.2 Uninstalling the RFID Data Management Pro for Fixed Readers

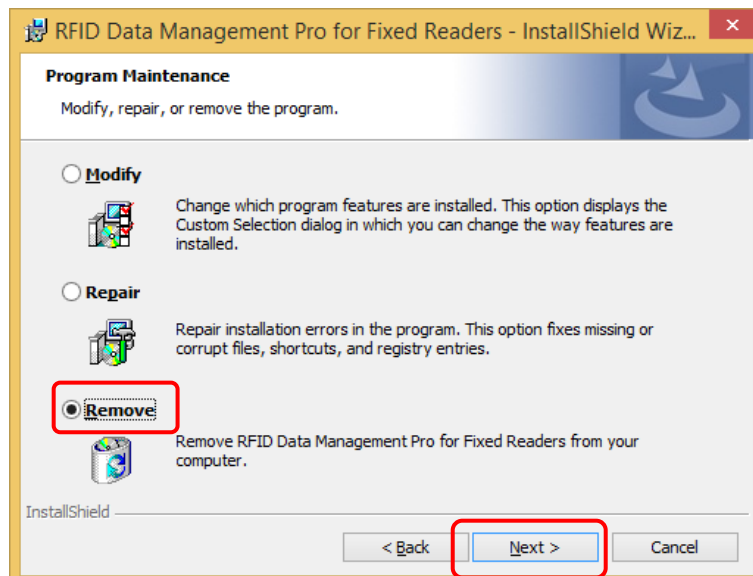
This section explains how to uninstall the RFID Data Management Pro for Fixed Readers application.

### ■ Operating procedure

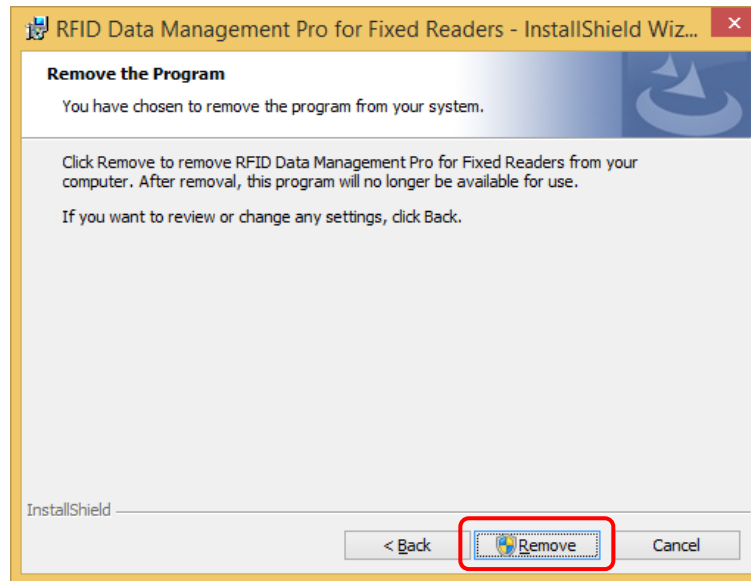
- (1) Select **Control Panel**, **Programs** and then **Programs and Features** from the **Start** menu.
- (2) Select **RFID Data Management Pro for Fixed Readers** from the **Uninstall or change a program** list, and then click the **Change** button. Click the **Next** button.



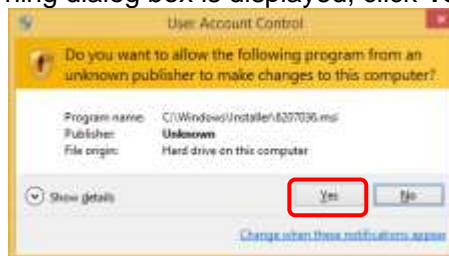
- (3) Select **Remove** and then click the **Next** button.



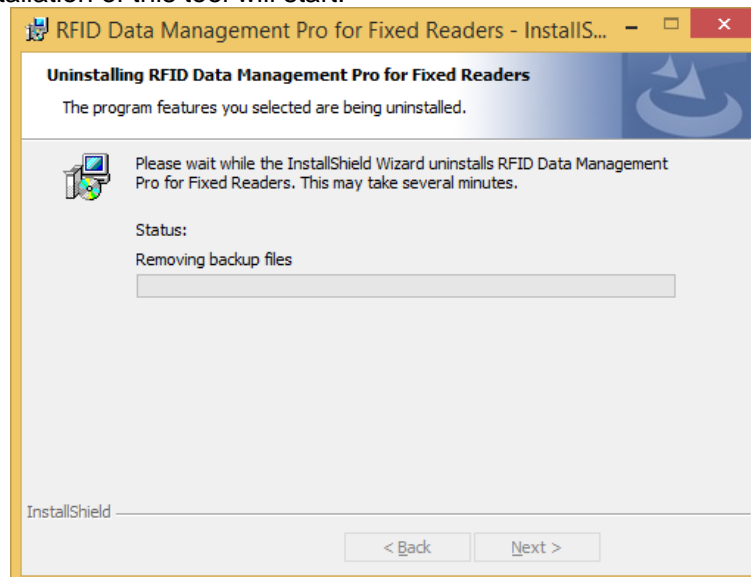
- (4) Click the **Remove** button.



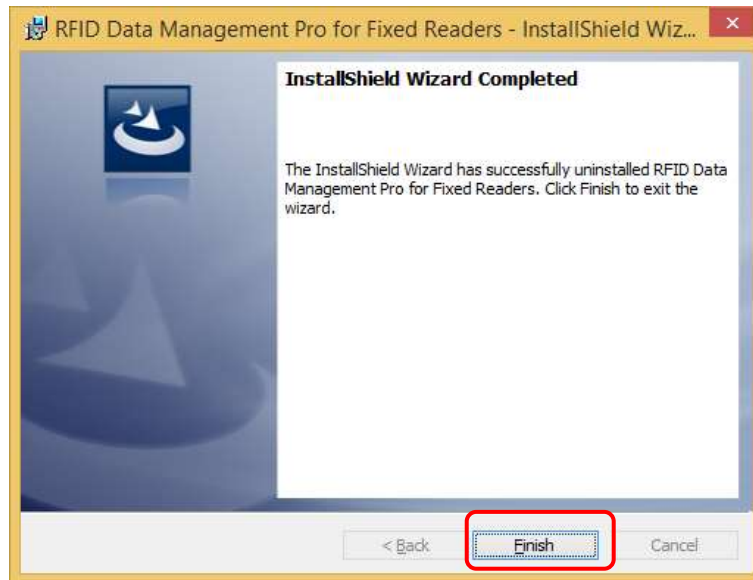
- (5) If the following warning dialog box is displayed, click **Yes**.



- (6) Uninstallation of this tool will start.



- (7) After the uninstallation completes, click the **Finish** button.



- (8) Check that the **RFID Data Management Pro for Fixed Readers** has been deleted from the **Currently installed programs** list.

<b>! Caution</b>	<ul style="list-style-type: none"><li>• Folders that contain the files created after the installation will not be deleted.</li><li>• If these folders need to be deleted completely, use Explorer or some other file manager to directly delete the following folder.<ul style="list-style-type: none"><li>- In the case of 32-bit PC: "ProgramFiles\Fujitsu\AIT\DataManagementPro"</li><li>- In the case of 64-bitPC: "ProgramFiles(x86)\Fujitsu\AIT\DataManagementPro"</li></ul></li></ul>
------------------	--

- (9) Restart the PC manually.

This completes the uninstallation procedure for this tool.

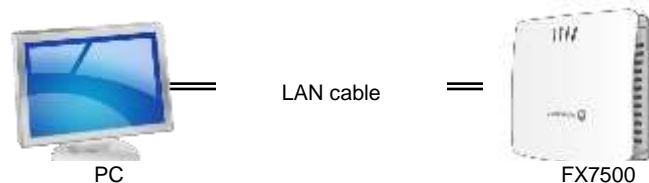
## 3 Setting up Motorola FX7500

This section explains the setup procedure for the Motorola FX7500.

Note: Refer to the Motorola FX7500 manual **FX7500 RFID Reader Integrator Guide** for details.

### ■ Operating procedure

- (1) Install EMDKforC (provided by Motorola).  
Execute "EMDK-C-020402.exe" and then follow the wizard to install EMDKforC.
- (2) Connect the PC and the FX7500.  
Connect the FX7500 to the PC via the LAN.



- (3) Configure network connection settings on the PC side. (Part 1)
  1. Select **Start > Control Panel > Network and Sharing Center > Change adapter settings**. Then right-click on **Local Area Connection** and select **Properties**.
  2. In the **Local Area Connection Properties** window, select **Internet Protocol Version 4 (TCP/IPv4)**, and then click the **Properties** button.
  3. Select the **Obtain an IP address automatically** radio button.
- (4) Confirm the network connection settings on the PC side (Part 2)
  1. Open a command prompt and execute ">ipconfig". Make sure that the IP address "169.254.xxx.xxx" has been allocated.  
Note: It may take some time before the IP address is assigned.  
Note: If **Obtain IP Address via DHCP** (described below) is set to **Off** then an IP address will not be assigned. In this case, make inquiries with the administrator of the FX7500 in question to verify the fixed IP address. Then set an IP address on the same network as the IP address specified in Step 4, "Configure network connection settings on the PC side (Part 1)."

(5) Log in to the FX7500.

1. Start a Web browser, enter "http://FX7500xxxxx" in the URL field, and then press <Enter>.

Note: For "xxxxx" see the label attached to the case of the FX7500.

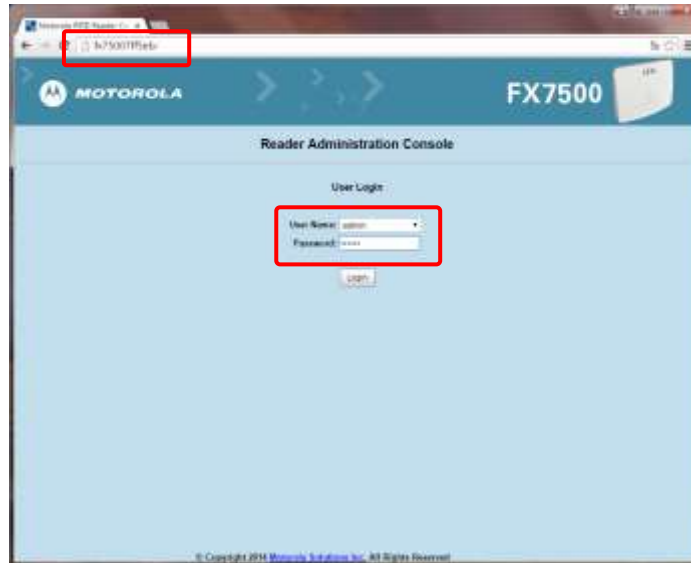
2. Log in by entering the following user name and password in the login window that is displayed.

User Name → admin

Password → change

Note: If you are using IE9 or later version and the **Login** button is disabled, select **Compatibility View** from the **Tools** menu

Note: This step is only possible when the PC and the FX7500 are both on the same network.





- (6) Set up the IP address for the FX7500.
  1. Select **Communication** from the list on the left-hand side.
  2. Change **Obtain IP Address via DHCP** from **On** to **Off**.
  3. Set the IP address assigned by network administrator for **Current IP Address**. The default address is set as "169.254.10.1".
  4. Set the **Subnet Mask** corresponding to the IP address. The default mask is set as "255.255.0.0".
  5. If **Current IP Address** is set as an address other than the default address, open "Deviceprovider.config" under the installation folder of RFID Data Management Pro and add the following element under <Provider>element.  
 <TargetIPAddress\_Port>IP Address:5084</TargetIPAddress\_Port>



- (7) Apply the IP address settings for the FX7500.
  1. Select **Commit/Discard** from the list on the left-hand side.
  2. Click the **Commit** button.
  3. Restart the FX7500.



- (8) Set the port number for the FX7500.
  1. Select **LLRP** from the list on the left-hand side.
  2. Set "5084" for **Client Port**.
  3. After these settings are complete, select **Logout** from the list on the left-hand side.



- (9) Set up the fixed IP address for the PC.
  1. Select **Start > Control Panel > Network and Sharing Center > Change adapter settings**. Then right-click on **Local Area Connection** and select **Properties**.
  2. In the **Local Area Connection Properties** window, select **Internet Protocol Version 4 (TCP/IPv4)**, and then click the **Properties** button.
  3. Select the **Use the following IP address** radio button.
  4. For **IP address**, set an IP address on the same network as "(6)Set up the IP address for the FX7500."
  5. For **Subnet mask**, set the value corresponding to IP address.

6. For **Default gateway**, set the IP address that was set for the FX7500 in the step "(6) Set up the IP address for the FX7500". The default value is "169.254.10.1".
  7. Open a command prompt and execute the command ">ping IP Address".
- (10) If the ping command succeeds, then this means that the PC is connected to the FX7500.