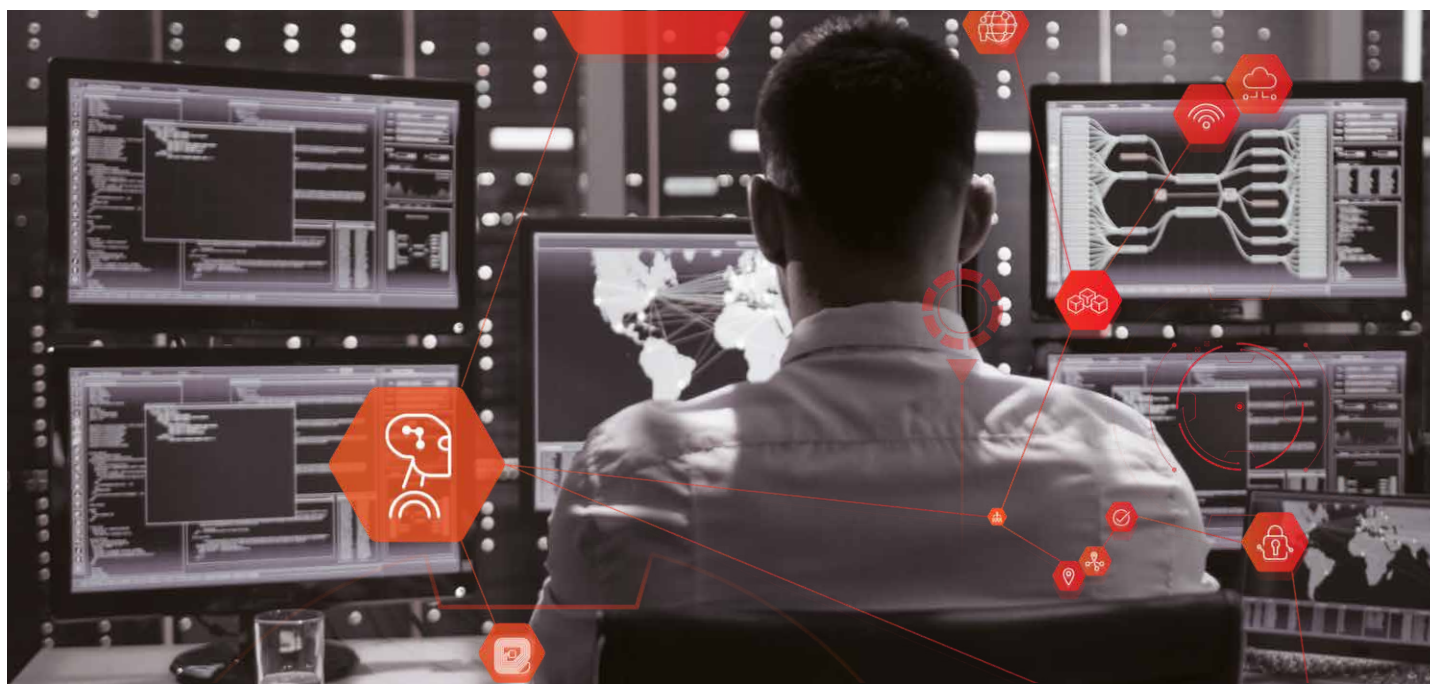


Fujitsu Secure Virtual Edge WAN

Providing deployed operations with a reliable connection to your secure military information services

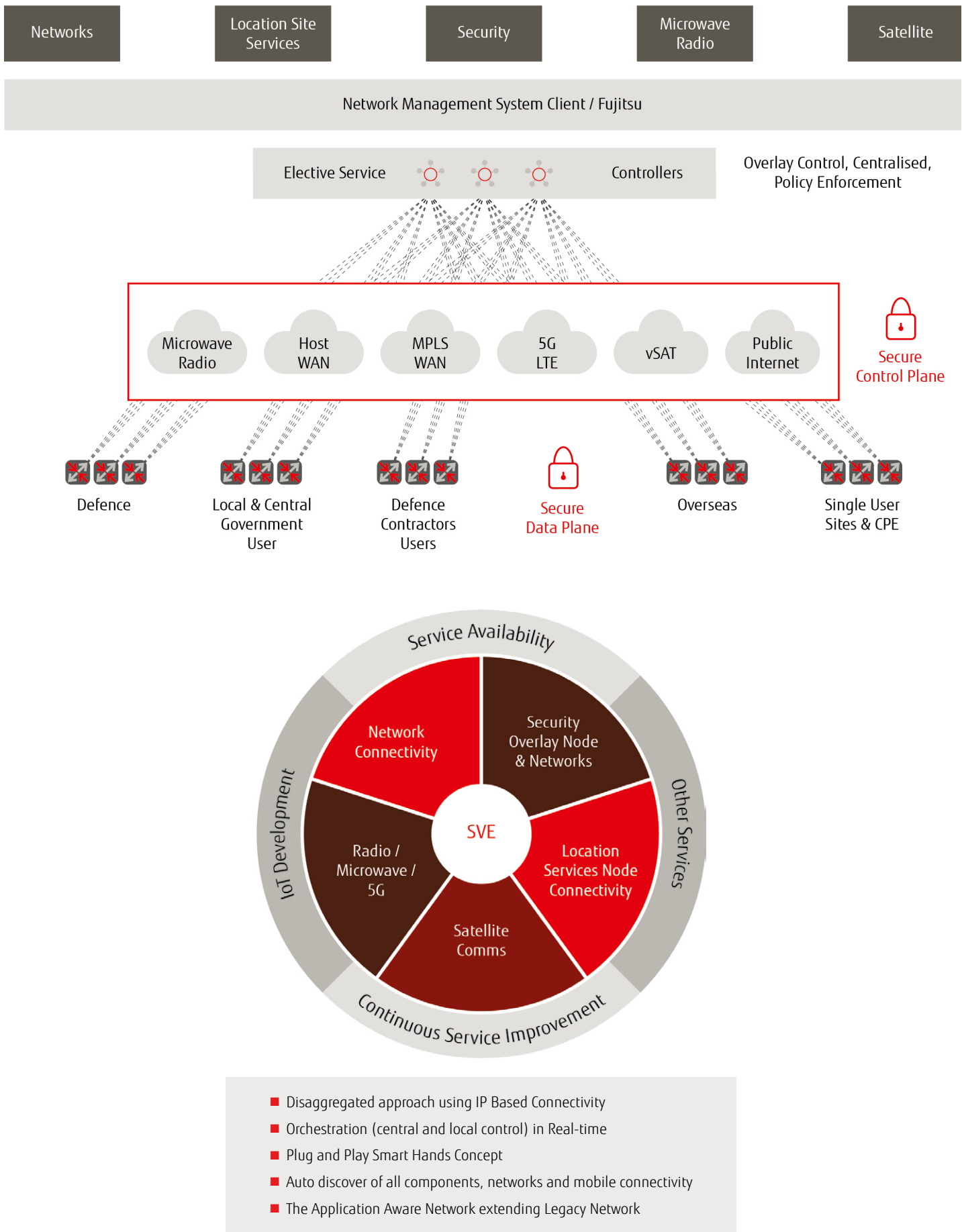
Ensuring your deployed operations have access to the information they need to support critical decision making is challenging. Often hostile surroundings, remote geographical locations or poor IT infrastructure add further layers of complexity. But providing a secure, reliable connection to your information services back at base is a critical requirement of today's deployed operations, if they are to be successful.



Highly agile solution, covers all geographies and connectivity options

The system is highly scalable, utilising technology that is capable of supporting up to 10,000 sites. Fujitsu's Secure Virtual Edge WAN enables secure connections to be made using all available technologies accessible in the deployed region, including MPLS, private and public Internet, satellite and mobile 3G/4G/5G services. SVE is completely connectivity supplier agnostic as Fujitsu has established telco partners, covering all geographies and connectivity options, including Century Link, Colt, Tata Communications and Telefonica. Secure connectivity is provided up to OFFICIAL, with additional high-grade encryption security overlay supporting connectivity up to ABOVE SECRET classifications.

Once a connection or connections have been established, these can then be aggregated to provide resilience and maximise bandwidth. Customer site connectivity aggregation is achieved through multiple connections to the SVE router, thus providing active-active bandwidth. This connectivity aggregation across multiple suppliers promotes use of cheaper connectivity for all customer sites. The service also has in-built flexibility to enable bandwidth distribution to be aligned to business priorities by tailoring service policies, either by application, user, group or security levels.



Centralised, resilient network with transparent performance monitoring

Any type of connectivity is managed holistically in a live-live configuration which is resilient by design. The Central Orchestration Platform is fully resilient utilising two accredited Fujitsu Tier III data centres (in List X areas), with dual network connectivity. Multiple SVE routers can be implemented for sites, delivering live-live, providing site resilience by design through alternate connectivity routes.

The network is also centralised, providing real-time change and enterprise-wide updates and patches that can be deployed in minutes from Fujitsu's Security Network Operations Centre (SNOC). The SNOC is a 24x7x365 support operation which is a unique, purpose-built facility based on NATO design, and an existing investment that customers can leverage today, rather than having to start from scratch.

In all cases, Fujitsu Service Management will monitor and manage end-to-end connectivity, managing alerts and reporting. Real-time performance monitoring of the network is transparent to the customer via a customisable web portal that is available to end users and support staff. Access to the web portal provides transparent real-time service visibility and enables real-time service changes to support business agility. A rich catalogue of additional services can also be provided including:

- Mobile [over Wi-Fi]
- Voice
- Call Centre
- User/service authentication
- LAN
- Wi-Fi
- Internet breakout
- Cloud connectivity
- Additional security overlays

Leading-edge COTS technology

Fujitsu's Secure Virtual Edge WAN is built using leading-edge technology from commercial off-the-shelf (COTS) products, utilising our long-standing relationships with these innovative suppliers. Continual development of the network solution keeps costs to a minimum and ensures that Fujitsu's solutions integrate the latest product enhancements.

This use of best of breed COTS products provides further flexibility by allowing new applications to be integrated into the system far quicker. Previously, this process could have taken many months but the flexible application onboarding process - which meets MoD governance and network joining rules - ensures new applications can be tested and validated to work within the secure Defence environment much faster than ever before.

Proven security and information assurance

Fujitsu's ability to deliver services and solutions at heightened security levels is well proven. Our Secure Virtual Edge WAN provides decision makers operating in deployed areas with secure access to real-time, accurate data wherever they are, on any device and is fully compliant with or exceeds relevant Government Security Classifications.

Fujitsu's approach builds on our extensive global experience of delivering highly secure solutions for numerous Government services that operate at SECRET or ABOVE SECRET classifications. In the UK, Fujitsu is certified for Cyber Essentials Plus and is also certified to ISO 27001, an independent international information security management standard.

Fujitsu will work closely with customers to ensure our information security standards meet the customer's own security and risk management requirements. In addition, Fujitsu shall adhere to all requirements stipulated by industry regulators, including the Defence Cyber Protection Partnership, and HMG Security Policy Framework and supporting Security Policies.

Why Fujitsu?

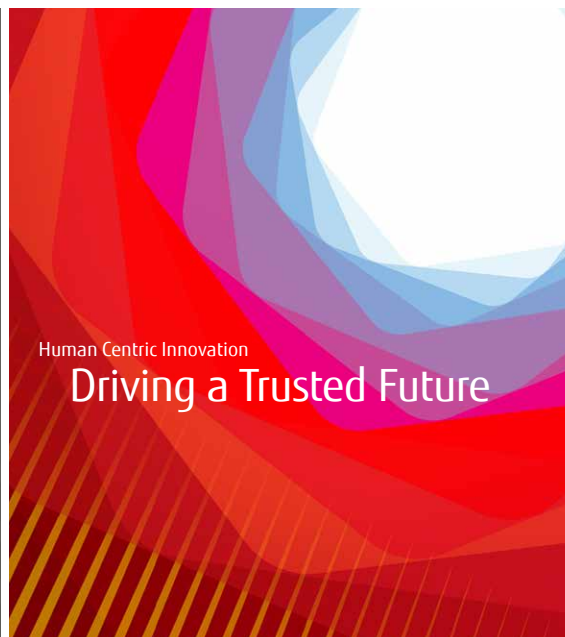
For over 50 years we have innovated with the MOD, Government Departments and intelligence communities, co-creating new technologies and capabilities. As a result, Fujitsu has around 4,000 security cleared staff and the experience to deliver and manage both generic industry offerings and those tailored to specialist needs at OFFICIAL, SECRET and ABOVE SECRET classifications.

Enabling *Your* Information Advantage

In today's complex, digital operational environment, never before has information been such a key asset in securing operational advantage. Fujitsu's vision is to provide customers with the means to translate complex data into useful information upon

which to base critical decisions and actions. Transforming this ever-increasing pool of data into meaningful, useful information through analytics, automation and genuine Artificial Intelligence is critical to achieving this goal.

Fujitsu is fully committed to working closely with our customers, and through the use of co-creation will seek to enhance capability both through the acceleration of existing processes, and also through the delivery of truly new capabilities and ways of working. Our approach is based upon maximising both existing investment and best-in-class innovation, delivering the full spectrum of capabilities needed to enable your information advantage.



Contact

Telephone: +44 (0)870 242 7998
Email: askfujitsu@uk.fujitsu.com
Ref: 6014
uk.fujitsu.com

Unclassified. © 2019 FUJITSU. Fujitsu, the Fujitsu logo, are trademarks or registered trademarks of Fujitsu Limited in Japan and other countries. Other company, product and service names may be trademarks or registered trademarks of their respective owners. Technical data subject to modification and delivery subject to availability. Any liability that the data and illustrations are complete, actual or correct is excluded. Designations may be trademarks and/or copyrights of the respective manufacturer, the use of which by third parties for their own purposes may infringe the rights of such owner. ID: 6014-049-07/2019.