

SONOFAI Launches World's First Frozen Albacore Tuna Fat Content Inspection Device Powered by Fujitsu's Ultrasound Analysis AI Technology

Fujitsu Limited
SVP, Head of AI Strategy and Business Development

Hideto Okada

April 9, 2025

Research Background

Pioneering frozen tuna quality assessment using ultrasound and AI technology in collaboration with Tokai University

Bottom-up Research

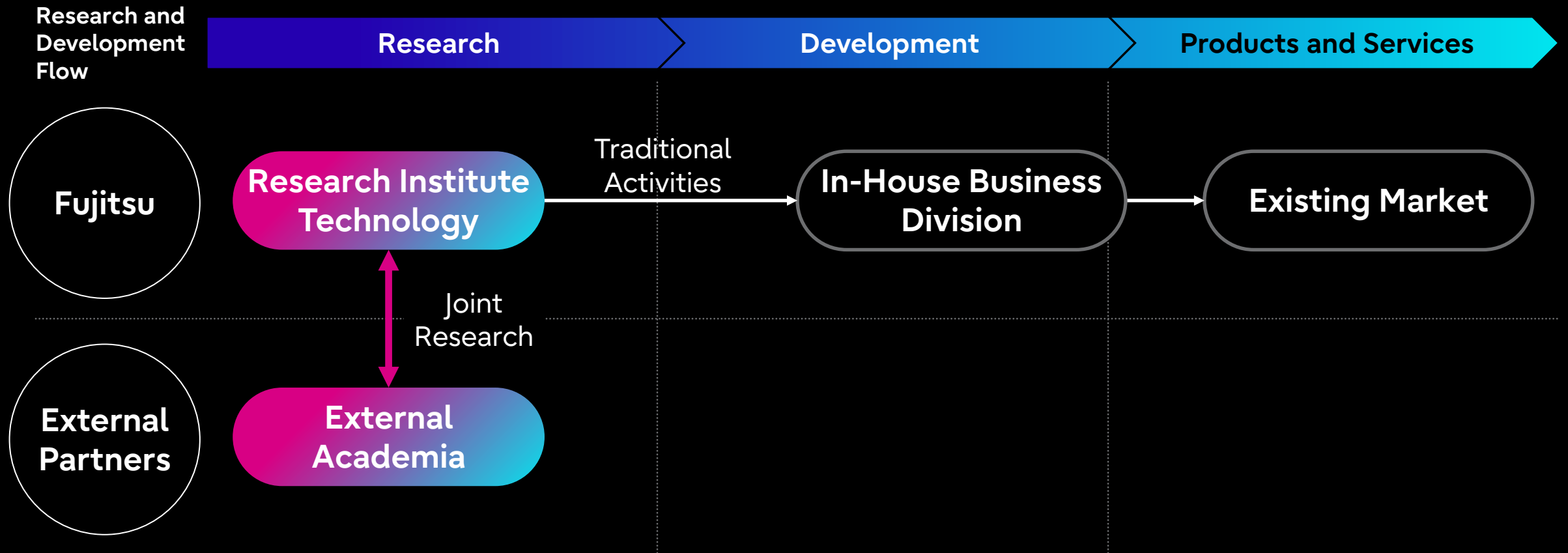
- The research was aimed at creating the next core business with free-thinking ideas, unconstrained by Fujitsu's existing operations.
- We focused on seafood, particularly tuna, where industry-standard quality benchmarks are lacking.
- The research achieved the world's first non-destructive testing of frozen tuna through joint research with Tokai University.
- Fujitsu proprietary AI tech overcame noise specific to ultrasound testing and performance actually *exceeded* destructive conventional methods (tail-cut selection)



Development and manufacturing of dedicated inspection equipment is essential; collaboration with external partners is indispensable.

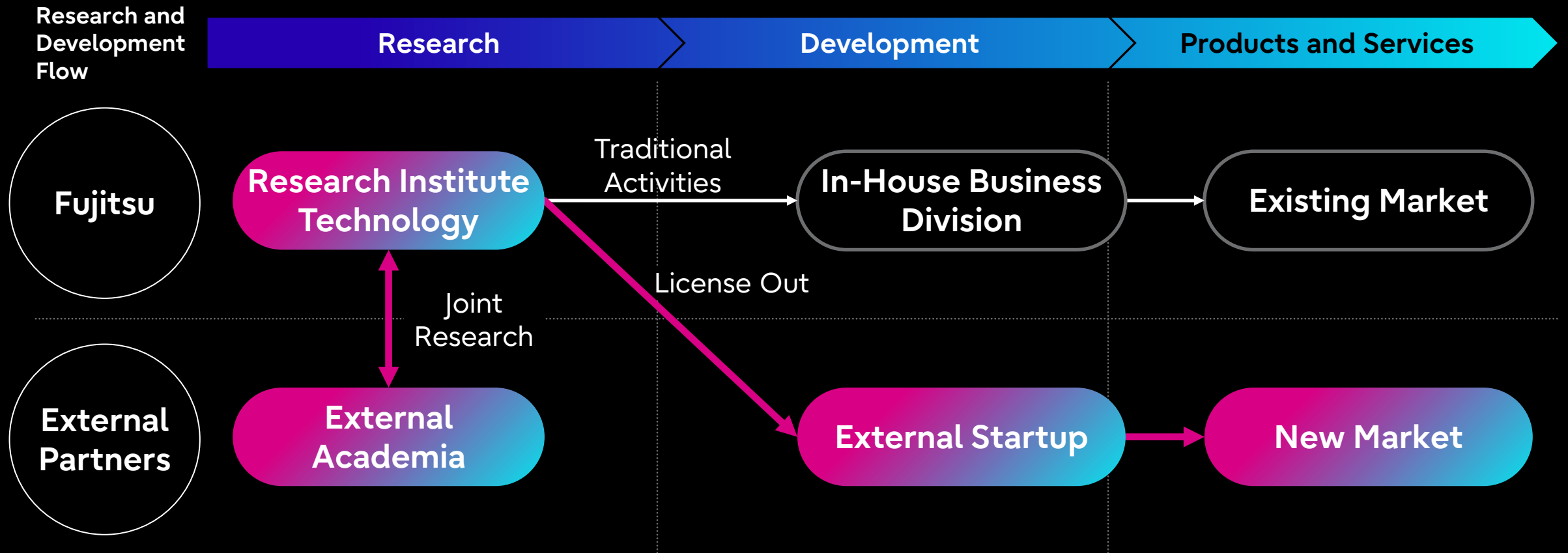
Open Innovation Initiatives Utilizing Research IP

- Aiming to accelerate business by providing research findings to external startups.
- Promoting rapid service commercialization through collaboration with external organizations, going beyond the scope of in-house development.



Open Innovation Initiatives Utilizing Research IP

- Aiming to accelerate business by providing research findings to external startups.
- Promoting rapid service commercialization through collaboration with external organizations, going beyond the scope of in-house development.

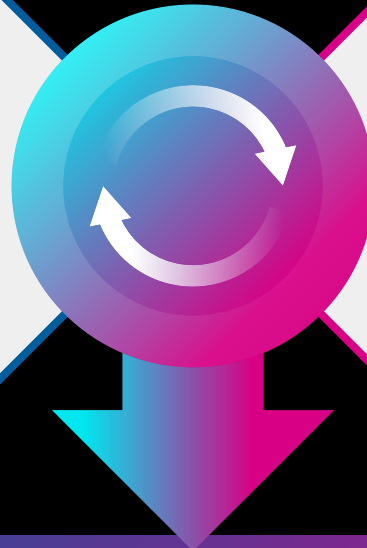


Partnership with SONOFAI

SONOFAI, seeking non-destructive testing technology for frozen fish, and FUJITSU, aiming to commercialize research institute technology, found the best collaboration opportunity through open innovation activities.



- Deep expertise in the food and fisheries industries.
- Product manufacturing, sales, and maintenance.
- Proprietary AI development and improvement capabilities.



- Non-destructive testing AI* technology for frozen products
- Achieved performance exceeding conventional selection methods

*Ultrasound Analysis AI technology, a core technology of "Fujitsu Kozuchi"



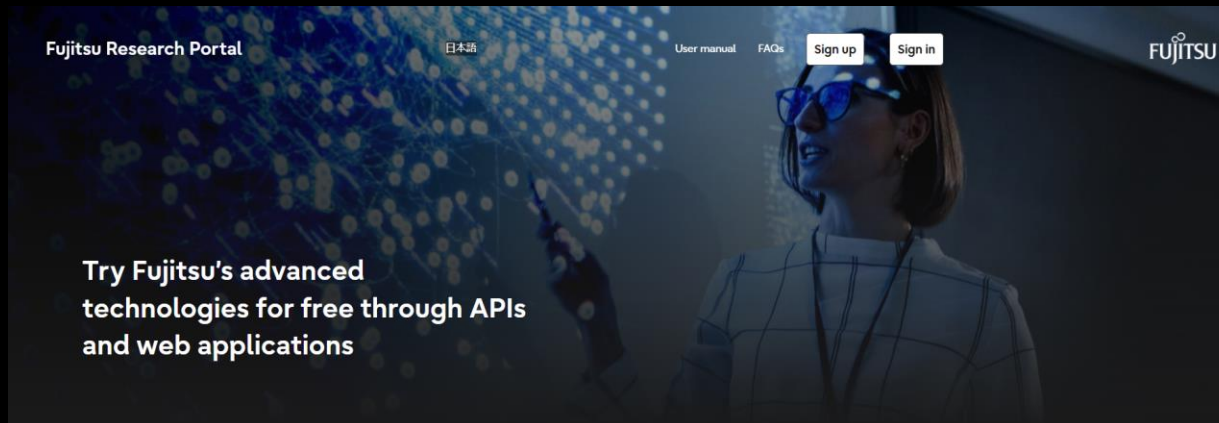
**A synergistic partnership
leveraging the strengths of both companies**

Enabling 100% inspection of albacore tuna and contributing to the distribution of high-value products.

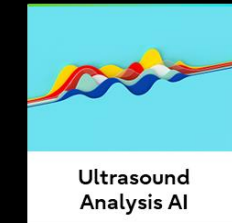
Fujitsu Research Portal



Fujitsu offers users the opportunity to try out Fujitsu's advanced technologies rapidly and free of charge to accelerate open innovation



Fujitsu Kozuchi



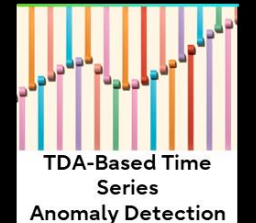
Ultrasound Analysis AI



Fujitsu AutoML



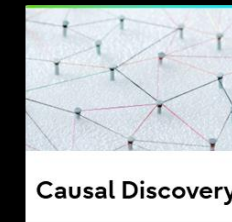
Fujitsu Auto Data Wrangling



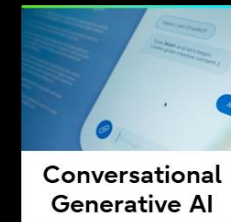
TDA-Based Time Series Anomaly Detection



Widely available AI



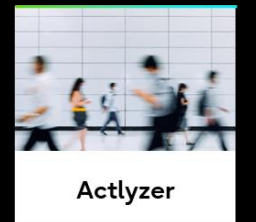
Causal Discovery



Conversational Generative AI



Fujitsu AI Ethics for Fairness



Actlyzer



Multi-modal AI



<https://en-portal.research.global.fujitsu.com/>

More than 50 AI technologies related to data analytics, Generative AI, AI trust, For Vision are available

Thank you