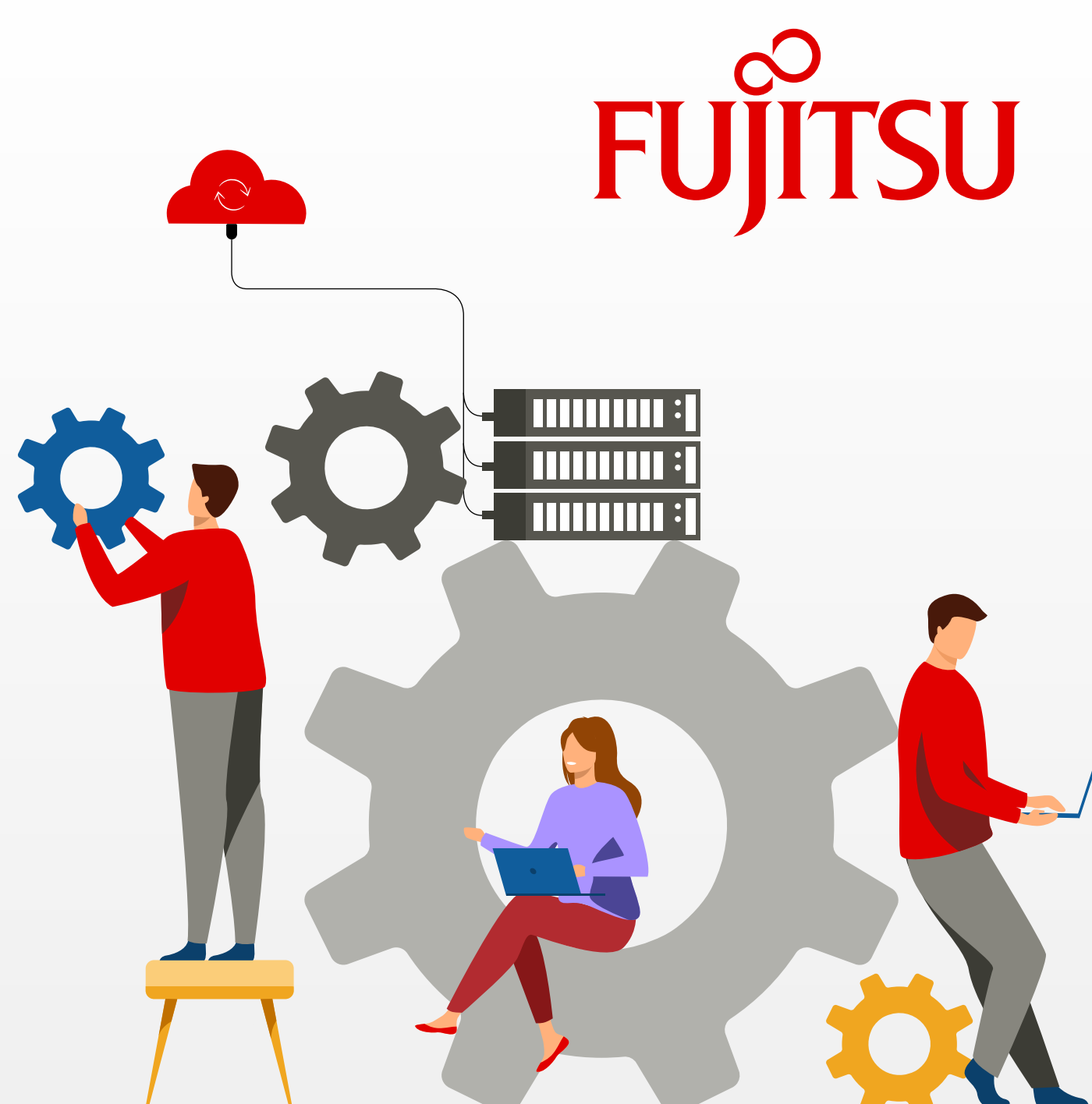
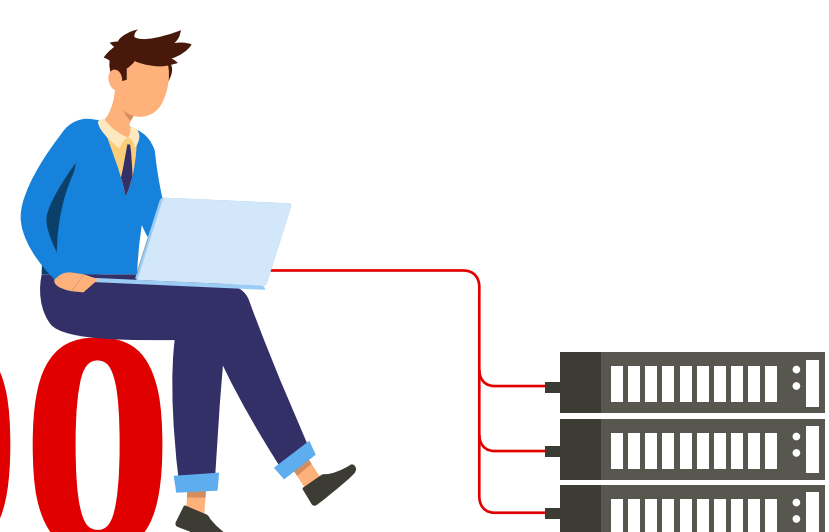


# Why Choose Fujitsu For SAP S/4HANA Implementations



# 300



Fujitsu supports 300 customers in the region including those who have invested in its Application Management Service, Implementation Service, and Platforms.

# 800+



With over 800 SAP specialists in the region, Fujitsu ensures that your enterprise is in the hands of certified consultants, who have driven over 7,300\* SAP HANA deployments globally. Their breadth of domain expertise extends across a range of industries from manufacturing to utilities.

## Reliable, Trustworthy, Supportive



*Fujitsu helped us draw a digital transformation roadmap for the next couple of years. They were the implementation partner for SAP S/4HANA. They were reliable, trustworthy and supportive."*



Akhtar Mahmood Khan,  
Raysut Cement Company



## Depth of SAP Capabilities

Whether you need SAP Consulting, SAP Implementation, SAP Migration, SAP Digital, or Manufacturing (MII/DMC), Fujitsu can help. It can deploy SAP in the cloud, or leverage on-premise servers, and can manage licenses and software maintenance. Its experts can drive Application Management Services, Cloud Operation Support, and Helpdesk and Call Centers.



## 24/7 Service and Support

With four follow-the-sun management locations, and global delivery centers in Malaysia, India, the Philippines, China, Russia, Poland, Portugal, and Costa Rica, Fujitsu offers 24/7, 365 days a year, multi-language support.



Fujitsu's average CSAT score speaks for its satisfied customers as it has always strived to exceed customer expectations with the promise of providing the best possible customer service and support.



## Gold

As a SAP PartnerEdge Gold Partner, Fujitsu has demonstrated its exceptional capabilities and its strong commitment to delivering business value to customers. Partners are evaluated every year. Fujitsu's competency in SAP technology and its ability to extract the most out of SAP solutions for customers, ensures you get the most value from your SAP S/4 HANA investment.



## Certified

CMMI Service Level 5 Certification is a testimony to Fujitsu's commitment to continuous process improvement. Fujitsu is also ISO certified for Quality Management (9001), Information Security Management (27001), and for Environmental Management (4001).

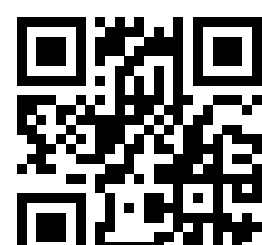


As the first global Technology Partner for SAP, Fujitsu enjoys a 40-year global partnership with SAP in technology and services. Today Fujitsu manages over 2,500 SAP systems and 330,000+ licenses worldwide.

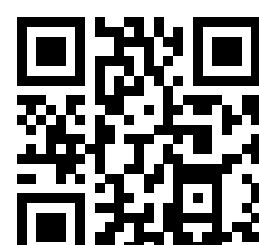
### Contact

Fujitsu (Thailand) Co., Ltd.  
Address: 22-23 Floor, 388 Exchange Tower,  
Sukhumvit Rd., Klongtoey, Bangkok 10110  
Phone: +66 2 302 1737 / Fax: +66 2 302 1555  
E-mail: [info.th@fujitsu.com](mailto:info.th@fujitsu.com)  
Website: [www.fujitsu.com/th](http://www.fujitsu.com/th)

About  
FUJITSU Vision



About  
FUJITSU Thailand



All rights reserved, including intellectual property rights.  
Technical data subject to modifications and delivery subject to availability. Any liability that the data and illustrations are complete, actual or correct is excluded. Designations may be trademarks and/ or copyrights of the respective manufacturer, the use of which by third parties for their own purposes may infringe the rights of such owner.