

Smart Industry Readiness Index

SIRI Assessment

First Step of "Fujitsu, Digital Transformation DX" : 3 Steps & 5D Approach



The global manufacturing industry continues to face tectonic change and accelerated digitalisation. As a proven Industry 4.0 transformation ecosystem, INCIT's SIRI platform has emerged as a highly effective, results-focused and reliable framework to assist the industry through such change.

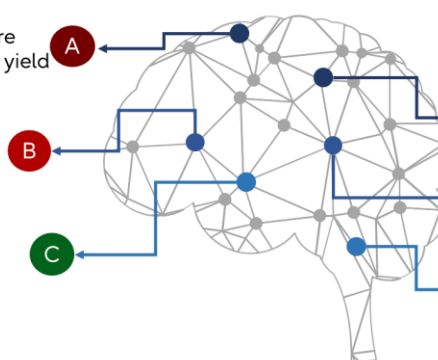
The SIRI framework allows an organisation to evaluate its digital transformation readiness, and fosters synchrony between management and the workforce when embarking on the Industry 4.0 transformation, by gaining the confidence and realize the urgency to transform intentions into actions.

Objective: To help companies start, scale and sustain their transformation initiatives.

What is Industry 4.0 and what are the tangible benefits that it can yield for my company?

What is the Industry 4.0 maturity level of my organisation and manufacturing facility?

How can my company improve in a targeted and step-wise fashion?



Key considerations in the development of the Index:

- A** Comprehensive to cover the key elements of Industry 4.0
- B** Balance between technical rigour and practical usability
- C** Relevant to all companies, regardless of industry, size, profile, and Industry 4.0 maturity

SIRI – Smart Industry Readiness Index

SIRI is an assessment tool that helps manufacturers verify their digital maturity in 2.5 days.

SIRI has the potential to become a global measure of Industry 4.0 transformation maturity for the manufacturing industry, helping to increase awareness and set targets that organisations can work towards. It also provides a consistent, structured framework so manufacturers can benchmark against their peers; pinpoint their strengths and weaknesses to better prioritise their development efforts and resources; and track their progress on their digital transformation processes.

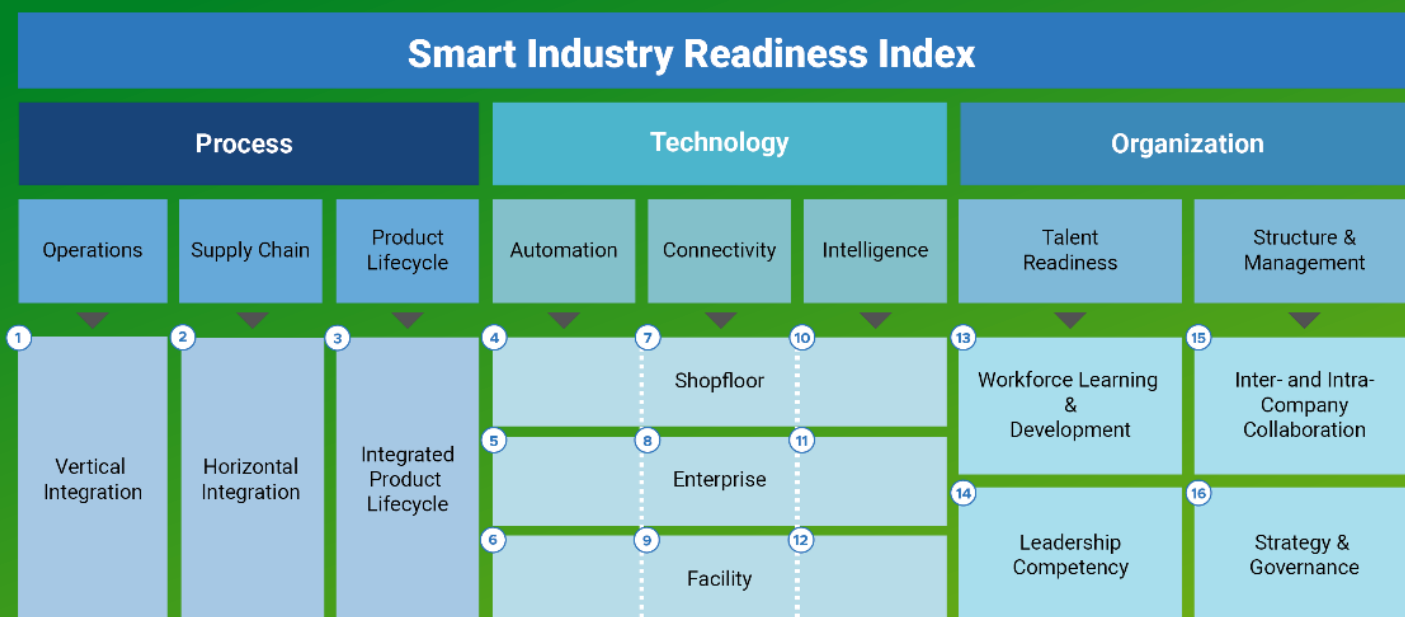


"In a fast-moving, data-driven world, the SIRI program can help manufacturers to accelerate their digital transformation journeys."

The Smart Industry Readiness Index (SIRI) was created by the Singapore Economic Development Board (EDB) in partnership with a network of leading technology companies, consultancy firms, and industry and academic experts. SIRI comprises a suite of frameworks and tools to help manufacturers – regardless of size and industry – start, scale, and sustain their manufacturing transformation journeys.

With SIRI, an organisation can clearly evaluate its Industry 4.0 maturity across the pillars of processes, technology and organisation. Keeping in mind the company's strategic focus, this evaluation can then be used to provide direction for the company's future and to

develop plans and roadmaps that transform the company holistically, across the entire enterprise. As a standardised measure, SIRI also allows a manufacturer to compare its transformation maturity to that of its peers, fuelling healthy competition and continuous improvement across the industry.



The SIRI framework comprises three layers:

1. The topmost layer identifies three fundamental building blocks of Industry 4.0: Process, Technology and Organization. A company's transformation plans must touch on all three to harness the full potential of digital transformation.
2. The second layer breaks these three building blocks down into eight pillars, which represent critical aspects that companies must focus on to become future ready organizations.
3. The third layer comprises 16 dimensions that should be referenced when evaluating the current maturity levels of manufacturing facilities

360° Transformation Across Organization



1. For more information on the Official SIRI Assessment and the evaluation scope, please refer to: Singapore Economic Development Board, The Smart Industry Readiness Index, 2017, www.edb.gov.sg/en/about-edb/media-releasespublications/advanced-manufacturing-release.html.
 2. For more information on the SIRI Maturity ranking methodology, please refer to: Singapore Economic Development Board, Manufacturing Transformation Insights Report 2019, 2019, www.edb.gov.sg/en/about-edb/media-releasespublications/advancedmanufacturing-release.html.
 3. The previous rankings can be found in: Singapore Economic Development Board, Manufacturing Transformation Insights Report 2019, 2019, www.edb.gov.sg/en/about-edb/media-releases-publications/advancedmanufacturing-release.html.
 For more information, visit www.inciit.org.

The Official SIRI Assessment (OSA)

One of the key program under SIRI is the Official SIRI Assessment (OSA). The OSA is a two-day independent review of a factory or plant, designed to balance technical rigor and practical applicability. It includes:

1. An assessment component, where the company's factory/plant is evaluated based on its maturity across the 16 dimensions of the SIRI framework. Post-evaluation, for each of the 16 dimensions, the factory/plant is classified into one of six maturity bands, with Band 0 representing the lowest level of maturity and Band 6 representing the highest.

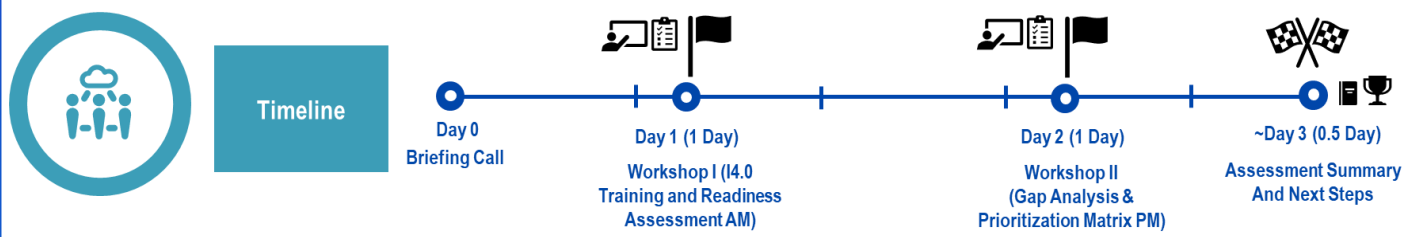
2. A prioritization component, also known as the Prioritization Matrix exercise, which draws on information provided by the company, such as their cost profile and priority key performance indicators (KPI).

After the OSA, companies receive a formal report with the following insights to help them start, scale and sustain their transformation journeys:

- A. Characterization of the current state of their manufacturing plants/factories.
- B. Benchmarks against industry peers or other companies within a given geography.
- C. Identification of high-impact areas that they can prioritize for improvement.

The OSAs are conducted by qualified individuals known as Certified SIRI Assessors (CSA). The CSAs are industry practitioners who are formally trained and qualified to conduct the reviews accurately and objectively. Today, SIRI counts on an impressive network of over 150 CSAs across more than 30 countries.

Assessment Timeline for one factory

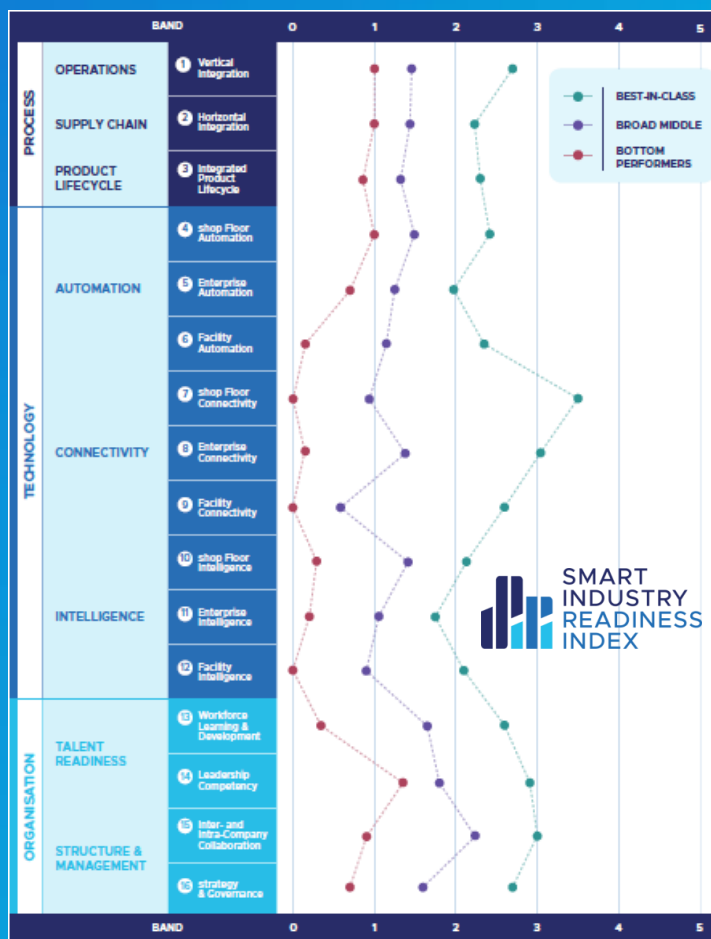


"Analyzing SIRI Maturity profiles at the company level"

The 3B Maturity Benchmark aims to show what the general maturity profile of a production site looks like, depending on whether it is highly advanced, average or rudimentary by today's standards. These quantitative reference points are obtained by ranking - according to SIRI Maturity - all companies that have taken the OSA and classifying them into three groups:

1. Best-in-Class, representing the top 10% of companies.
2. Broad Middle, representing the middle 80% of companies.
3. Bottom Performers, representing the bottom 10% of companies.

"Benchmarking with 1,000+ companies, Across 14 Major Industries around the world."



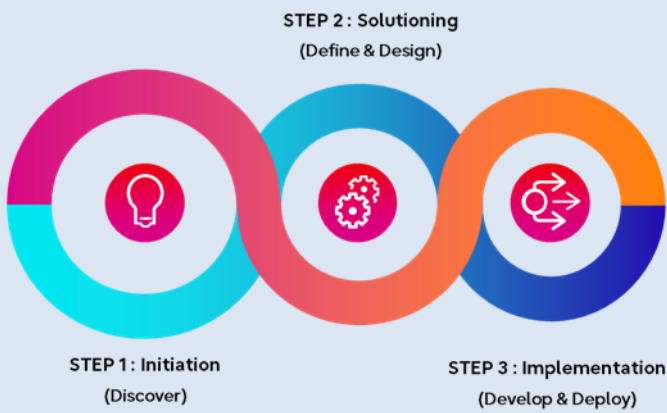
Digital Transformation DX Consulting

We provide end-to-end services for "Digital Transformation" from DX Assessment, Strategic Plan and Roadmap until Technologies Implementation with our experts from local and global.

Contact

Fujitsu (Thailand) Co., Ltd.
 Address: 22-23 Floor, 388 Exchange Tower,
 Sukhumvit Rd., Klongtoey, Bangkok 10110
 Phone: +66 2 302 1500 / Fax: +66 2 302 1555
 E-mail: info.th@fujitsu.com
 Website: www.fujitsu.com/th

3 Steps Approach & 5D Framework



- 1**
 - SMART FACTORY ASSESSMENT
 - GAP ANALYSIS & PRIORITIZATION MATRIX
 - I4.0 PRINCIPLE & CONCEPTS
- 2**
 - DX ROADMAP CREATION
 - SMART FACTORY SOLUTIONS
 - VENDORS & TECHNOLOGIES SELECTION
- 3**
 - MANAGED DX PROJECT & EXECUTION
 - SERVICE SUBSCRIPTIONS
 - TRAINING & LIVE SUPPORT

Fujitsu DX



Fujitsu as DX Partner

End to End, One stop Service for Digital Transformation



Steps with Fujitsu

Create robust plan with Expert team for DX from Fujitsu



Quick win

With small budget to start DX journey by using DX analysis to create data driven strategic plan or robust the current



Assure Investment

Less than 5% of overall budget to assure company's tangible benefits on DX investment



Fujitsu Solutions

Expert team are available to assist along the DX journey with local & global solution partners



Skilled Resources

Talents pool from Fujitsu to dedicate for company's resources



FUJITSU Thailand Website



FUJITSU Thailand Facebook



FUJITSU Thailand LinkedIn



FUJITSU Thailand YouTube



All rights reserved, including intellectual property rights. Technical data subject to modifications and delivery subject to availability. Any liability that the data and illustrations are complete, actual or correct is excluded. Designations may be trademarks and/or copyrights of the respective manufacturer, the use of which by third parties for their own purposes may infringe the rights of such owner.