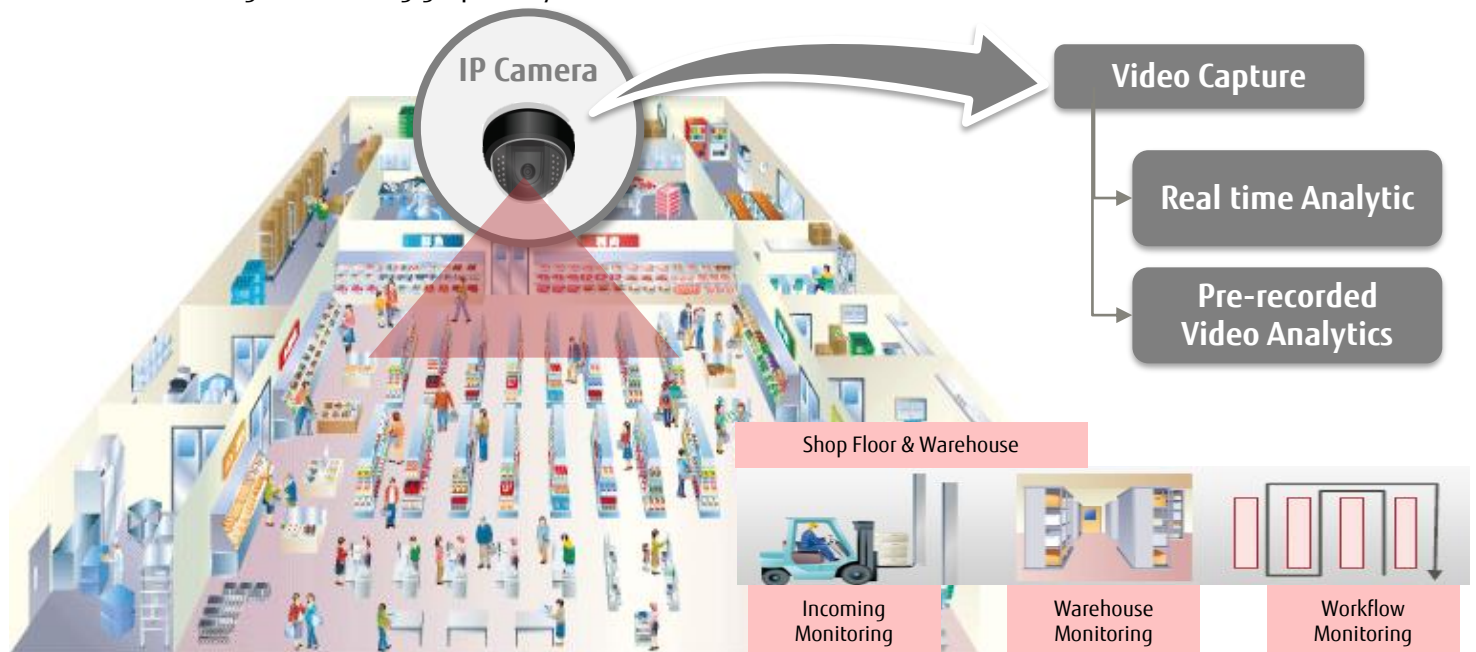


# Visualize your factory operation and safety

## FUJITSU Software Imagepower TrackingEye

**TrackingEye** can detect moving objects (e.g. people, vehicle, animals) and digitalize them by video analytics technology. The digitized data can be used to know the behavioral tendency of moving objects by visualization on the video image or showing graphically.



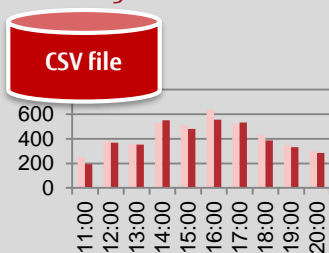
### 1. Visualization

Identify trajectory (moving path) of moving objects.



### 2. Digitization

Analyze data flexibly with CSV file generated.



### 3. Alert Detection

Activate detection alert by configuring conditions.



- Blinking screen
- Dialog box
- Warning sound

### 4. Record

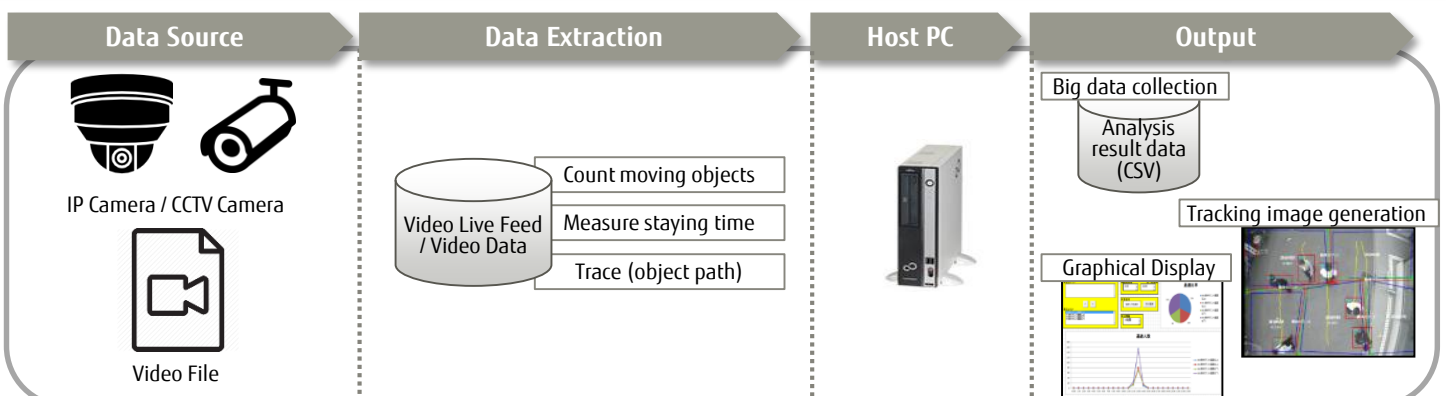
Save still images by specified conditions.



Record live video data.



## System Overview



## Features Overview

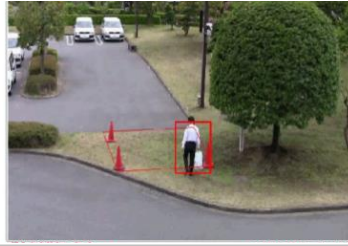
### Suspicious Monitoring

Detect abnormal movement of person wanders or stays at target area.



### Intruders Detection

Detect trespassing and issue a warning or notify by email alert.



### Face Mosaic

Apply mosaic to face part in consideration of privacy when output video.



### People Counting

Count number of people passing the specified area or line.



### Staying Time Measuring

Measure duration of time for each area of stay.



### Color Identification

Identify color to make a comparison between the detected color and specified color



### Image synthesis from multiple camera

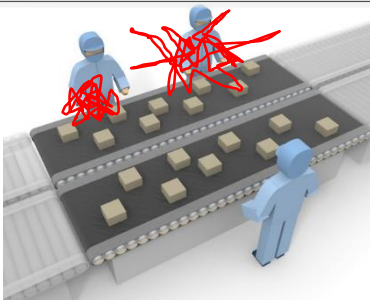
◆ Patent applied ◆

Combine and overlay all the image of moving object from multiple cameras into one view automatically. Greatly reduce manual workload.



## Use Case

### Automotive components production line



Workers assemble the parts on a moving conveyor belt.

### Customer Challenges

- ❑ Work efficiency often changes depending on the skills of the person in charge.

### Proposed Solution

- ❑ To visualize how much the skilled workers are moving by calculating the actual distance from the tracking coordinates data.
- ❑ If the same work took more time than usual, it alerts a problem may have happened. If finished earlier than usual, it alerts some processes may have been skipped.

### Outcome & Benefits

- ❑ Able to visualize skilled workers' behavior, and utilize the results for human resources education.
- ❑ Detect whether there is an abnormal situation with the work and measure duration of work done.

If you need further information, please contact us at:-

### FUJITSU (MALAYSIA) SDN BHD

Bangunan Emerio Cyberjaya  
Level 2 & 3 (Kagayaki Building), 63000 Cyberjaya, Selangor Darul Ehsan, Malaysia.  
E-mail: [askfujitsu.my@fujitsu.com](mailto:askfujitsu.my@fujitsu.com)