

1U TFT-LCD Console Drawer

SERVIS DRAWER

FD-1000AT

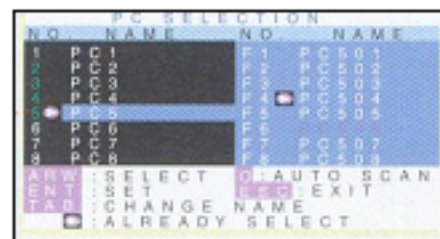
The SERVIS Drawer offers the latest, comfortable and efficient way to control server cabinets for Reliability, Availability, and Serviceability.

■ FEATURES

- A 15 inch 1024 x 768 high resolution XGA TFT color LCD monitor, a membrane switch keyboard and a touch pad with 3 buttons.
- Basic drawer model supports the PS/2 keyboard and mouse interface.
- Flat modular construction for 19 inch 1U rack mounting. The 1U drawer pulls out and the display raises up like a notebook computer in use. When not in use, the display folds down and latches close and the 1U drawer pushes into cabinet easily and smoothly.
- Quick and easy installation. Slide rails are not included, available in 3 optional configurations.
- Drawer comes with space to install the 4-port Multi-KVM. Separate purchase to upgrade to I/F support for PS/2, USB, SUN I/O and USB.
- Optional built-in KVM drawer available (Server Drawer Multi)
 - I/F support: PS/2, USB, SUN I/O, USB
 - On Screen Display (OSD) function

In Hot Key Mode, the selection screen is displayed on the monitor. This display lets you assign names of PCs and select PCs using the cursor key.

 - Hot Key: any server is selected by the keyboard directly.



In use

482 (W) x 1077 (D) x 345 (H) mm



In cabinet

482 (W) x 642 (D) x 42(H) mm



Side rails



LAMP(S) INSIDE THIS PRODUCT CONTAIN MERCURY AND MUST BE RECYCLED OR DISPOSED OF ACCORDING TO LOCAL, STATE OR FEDERAL LAWS.

FD-1000AT SERVIS Drawer

■ SPECIFICATIONS

Product Name / Model		SERVIS Drawer / FD-1000AT		
Part Number		NC14004-B402/US* NC14003-T552/US*,**	NC14004-B412/US NC14004-B502/US*	NC14004-B422/US NC14004-B512/US*
LCD drawer part	19 inch rack space requirement	1U		
	LDC display	15 inch XGA TFT color LCD		
	LCD resolution	1024 x 786		
	LCD supported video signal (H, V sync. signal)	Separate sync.		
	Keyboard	# of keys	83 keys (US), (other languages: 84 keys (Europe), 87 keys (Japan))	
		I/F	PS/2	PS/2: to be connected to KVM part
KVM part	Touch Pad	I/F	Capacitive touch pad, 3 buttons, PS/2	Capacitive touch pad, 3 buttons, PS/2: to be connected to KVM part
	Supported PC/Server		-	Servers with PS/2, USB I/F, Sun I/O and USB servers
	Number of server connections (max. number in cascade connections)		-	8 units (64) 16 units (256)
	Selection method		-	Hot keys, OSD
	LED indicator	Power	-	8 16
		Select	-	8 16
	Console Port with interface	Keyboard	-	PS/2 Mini Din 6-pin (female) x1: to be connected, Sun Mini Din 8-pin: not connected
		Mouse	-	PS/2 Mini Din 6-pin (female) x1: to be connected
		Monitor	-	Mini D-SUB 15P (female) x1: to be connected
	Supported interface for cascaded server	Keyboard	-	PS/2 keyboard compliant
		Mouse	-	PS/2 mouse compliant
		USB	-	USB 1.1 compliant
		Sun I/O	-	Sun keyboard / mouse compliant
	Server cascade port		-	Mini D-SUB 15P (female) x 8 Mini D-SUB 15P (female) x 16
	Auto scan intervals		-	3 / 5 / 10 (default), 20 / 40 / 60 seconds
General	Power supply		100 to 240VAC	
	Operating environment		15° -35° C / 10-80%RH	
	Dimension (main unit)		482 (w) x 642 (d) x 42 (h)mm in storage 482 (w) x 1080 (d) x 345 (h)mm in operation	
	Weight (main unit)		12kg 14kg	14kg
	Included accessories		User manual (x1), Power cable (x1)	

* to be replaced by part number above

** 4-port KVM: NC14004-B042 can be installed inside drawer (separate purchase). 8/16-port KVM cannot be mounted inside drawer.

FD-1000AT SERVIS Drawer

■ OPTIONAL ACCESSORIES

AC power cable		US model	NC14004-B074
Interface cables	PC cable	1.8m	NC14000-B602
		3.0m	NC14000-B603
		5.0m	NC14000-B605
	USB cable	1.8m	NC14000-B102
		3.0m	NC14000-B103
		5.0m	NC14000-B105
	Sun I/O cable	1.8m	NC14000-B202
		3.0m	NC14000-B203
		5.0m	NC14000-B205
	Guide Rail (adjustable from 590 to 750mm)	Inside mounting	NC14003-T591
		Outside mounting	NC14003-T592
		Side mounting	NC14003-T593

Notes: 1. * All US drawer models include AC power cable.

** US 2-port KVM (ATL-models) includes AC adapter cable

2. Above P/N for A/C cable is US model.

Guide Rails	
Standard inside mounted guide rail	NC14003-T591
Outside mounted guide rail	NC14003-T592
Side mounted guide rail	NC14003-T593

FD-1000AT SERVIS Drawer

■ SERVIS Families

KVM			
Model/Series		Part Number	Description
SERVIS 2: FS-102ATL	2-port	NC14004-T256/US	FS-102ATL 2-port US version
SERVIS MULTI: FS-1004MT	4-port KVM	NC14004-B042	FS-1004MT 4-port multi KVM switch
SERVIS MULTI: FS-1008MT	8-port KVM	NC14004-B082	FS-1008MT 8-port multi KVM switch
SERVIS MULTI: FS-1016MT	16-port KVM	NC14004-B162	FS-1016MT 16-port multi KVM switch
DRAWER			
Model/Series		Part Number	Description
SERVIS LCD Drawer: FD-1000AT	Basic model	NC14004-B402/US	15" AT Console drawer, US version (LCD: XGA, Input Device I/F: PS/2)
	with built-in 8-port Multi-KVM	NC14004-B412/US	15" AT Console drawer, US version with 8-port multi-KVM pre-installed (LCD:XGA)
	with built-in 16-port Multi-KVM	NC14004-B422/US	15" AT Console drawer, US version with 16-port multi-KVM pre-installed (LCD: XGA)
SERVIS LCD Drawer: FD-1000MT	Basic model	NC14010-B452/US	17" Console drawer, US version (LCD: SXGA, Input Device multi-interface)
	with built-in 8-port Multi-KVM	NC14010-B462/US	17" Console drawer, US version with 8-port multi-KVM pre-installed (LCD: SXGA)
	with built-in 16-port Multi-KVM	NC14010-B472/US	17" Console drawer, US version with 16-port multi-KVM pre-installed (LCD: SXGA)
Cat5Extender			
Model/Series		Part Number	Description
Cat5 Basic series		NC14004-B713	200 m Cat5 Extender Kit of local and remote units (XGA:30-200m, SXGA:30-150m), remote unit to be console port only, support audio remote
Cat5 Wide Band: FE-1000CW		NC14004-B721/U	300 m Cat5 Extender Kit of local and remote units, remote unit to be console port only, compact size: 110 (W)x 100 (D) x 25 (H)mm
Cat5 Wide Band: FE-2000CW		NC14004-B717/U	300 m Cat5 Extender Kit of local and remote units , remote unit to be console port only, support audio and touchpanel (RS232: TxD, RxD only)

FD-1000AT SERVIS Drawer

Fujitsu Components International Headquarter Offices

Japan

Fujitsu Component Limited
Gotanda-Chuo Building
3-5, Higashigotanda 2-chome, Shinagawa-ku
Tokyo 141 8630, Japan
Tel: (81-3) 5449-7010
Fax: (81-3) 5449-2626
Email: promothq@fcl.fujitsu.com
Web: www.fcl.fujitsu.com

North and South America

Fujitsu Components America, Inc.
250 E. Caribbean Drive
Sunnyvale, CA 94089 U.S.A.
Tel: (1-408) 745-4900
Fax: (1-408) 745-4970
Email: components@us.fujitsu.com
Web: <http://www.fujitsu.com/us/services/edevice/components/>

Europe

Fujitsu Components Europe B.V.
Diamantlaan 25
2132 WV Hoofddorp
Netherlands
Tel: (31-23) 5560910
Fax: (31-23) 5560950
Email: info@fceu.fujitsu.com
Web: emea.fujitsu.com/components/

Asia Pacific

Fujitsu Components Asia Ltd.
102E Pasir Panjang Road
#01-01 Citilink Warehouse Complex
Singapore 118529
Tel: (65) 6375-8560
Fax: (65) 6273-3021
Email: fcal@fcal.fujitsu.com
Web: <http://www.fujitsu.com/sg/services/micro/components/>

©2006 Fujitsu Components America, Inc. All rights reserved. All trademarks or registered trademarks are the property of their respective owners.

Fujitsu Components America or its affiliates do not warrant that the content of datasheet is error free. In a continuing effort to improve our products Fujitsu Components America, Inc. or its affiliates reserve the right to change specifications/datasheets without prior notice.
Rev. June13/2006