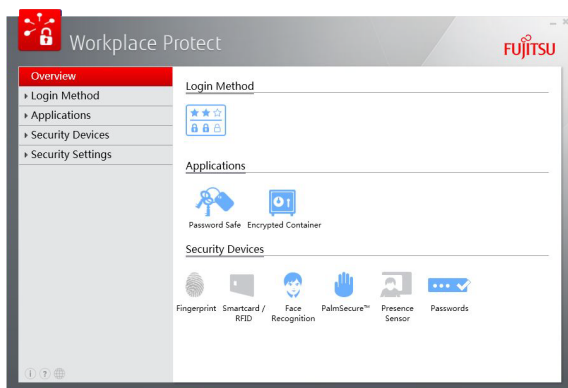


## How to register PalmSecure™

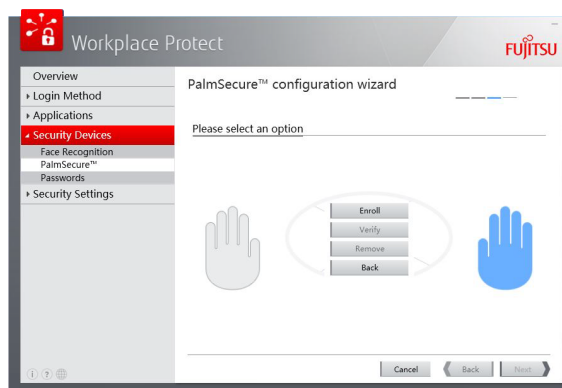
1. Open Workplace Protect. Under Security Devices, click on **PalmSecure™**.



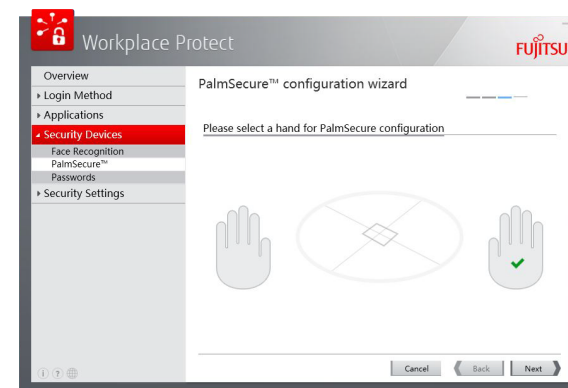
2. Confirm with **Next**.

3. Enter your user name and password. Then click **OK**.  
(If you haven't set up a login account yet, please open Control Panel and set up under User Accounts. Start from step 1 after you finished set up)

4. Select left/right hand for which you would like to register and select **Enroll**.

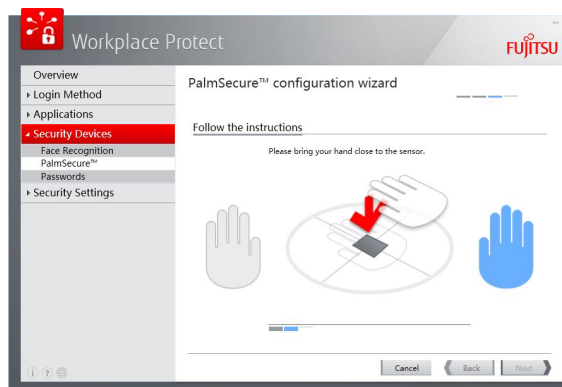


7. When the recording is correct, a green tick is shown and click **Next**.

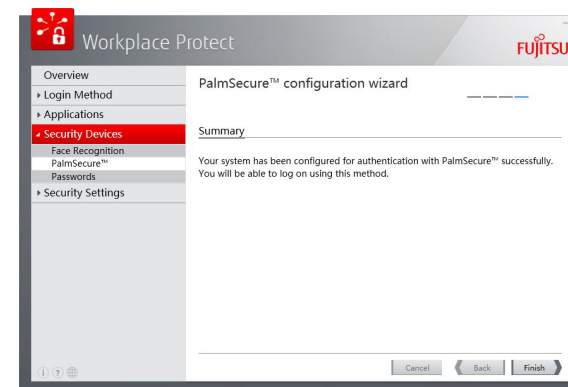


5. Place your hand 4-6 cm above the sensor.

6. The registration will take several scans to complete. Follow the instruction on screen and adjust your hand position accordingly.



8. Click **Finish**. Now you are ready to login with palm vein in the next reboot.



## \*\*\*\*\* How to install Workplace Protect \*\*\*\*\*

1. Click **Fujitsu BonusApps** on your Desktop.  
Press **Windows + F** on your keyboard and search **Fujitsu BonusApps** if you don't see it.
2. Select Workplace Protect in the list and click **install**.