

Toward Future Mobility

Manabu Yamamoto
Intelligent Mobility Solution
of EMEA

FUJITSU

shaping tomorrow with you

Human Centric Innovation

Co-creation for Success



+ 30 years engagements for

- **Services & Solutions**

- System Integration (Network, Enterprise)
- ITS / Telematics, etc.

- **Devices**

- Car navigation system
- Drive recorder
- Tachometer, etc.



- Digitalization Impact - Future of Mobility
- Co-creation for Success, "Rail Disruption Management"

Disrupted Industries by Digital Wave (Happened in decades ago and even now...)

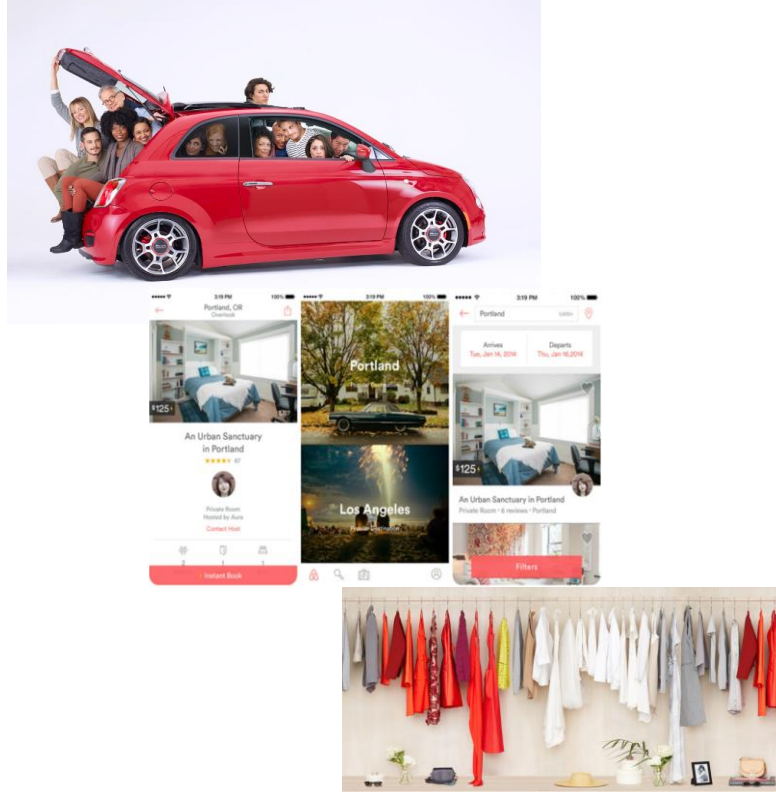


Transport for Me is...

■ What does it come up to your mind when you talk about transport...

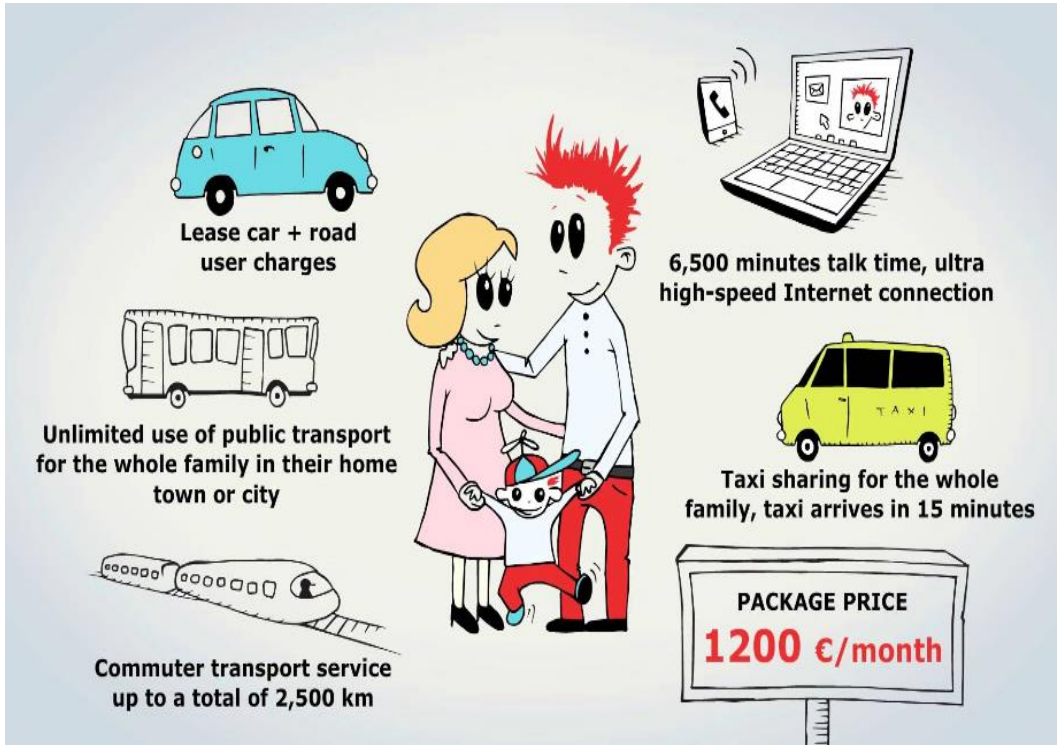


Fundamental Society Change - Sharing Economy

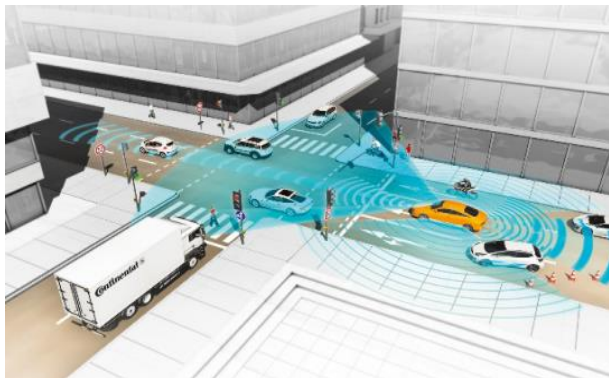


SOURCE: TIME MAGAZINE, Feb 9, 2015

Users(Passengers) Just Want to Have Bundle Services



- Pay As You Use (/Go)
- Single payment for multiple modals
- Your necessary modals are over your device..



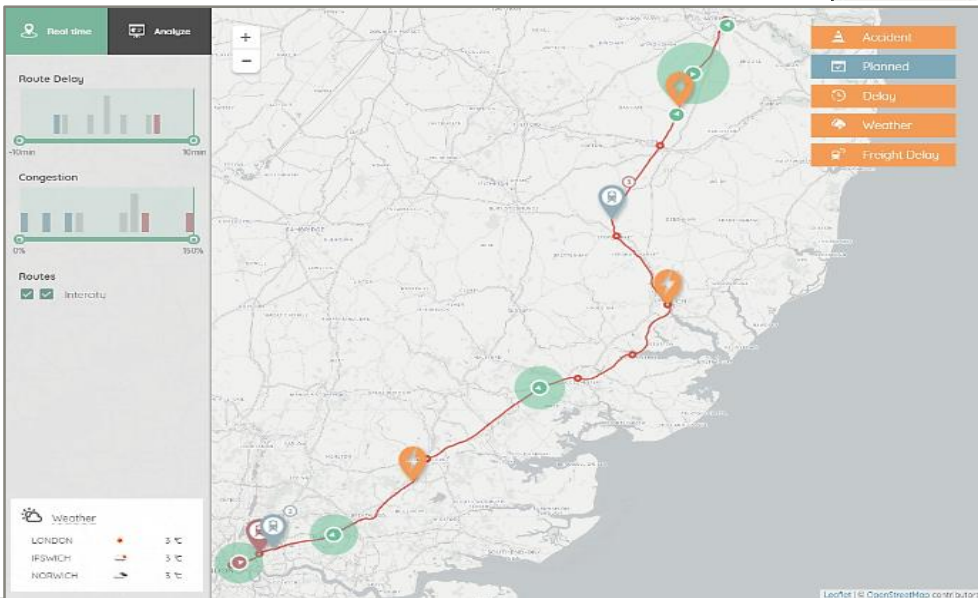
■ Data for Situational Awareness

- Historical data
 - CCTV, Traffic signal, Speed Detector
- Real-time data (moving sensor)
 - Autonomous vehicle, Public transport, Bike, Human...
- IoT("Internet of transport"), V2X / V2I...

■ Surface Intelligent Transport System

- Intelligent traffic system with AI (with Deep & Machine Learning)
- Pre-indicative decision making(not manual decision)

Rail Operational Improvement + Passengers Satisfaction



Real-Time Situational Awareness

- Incident, Passenger flow, Congestion

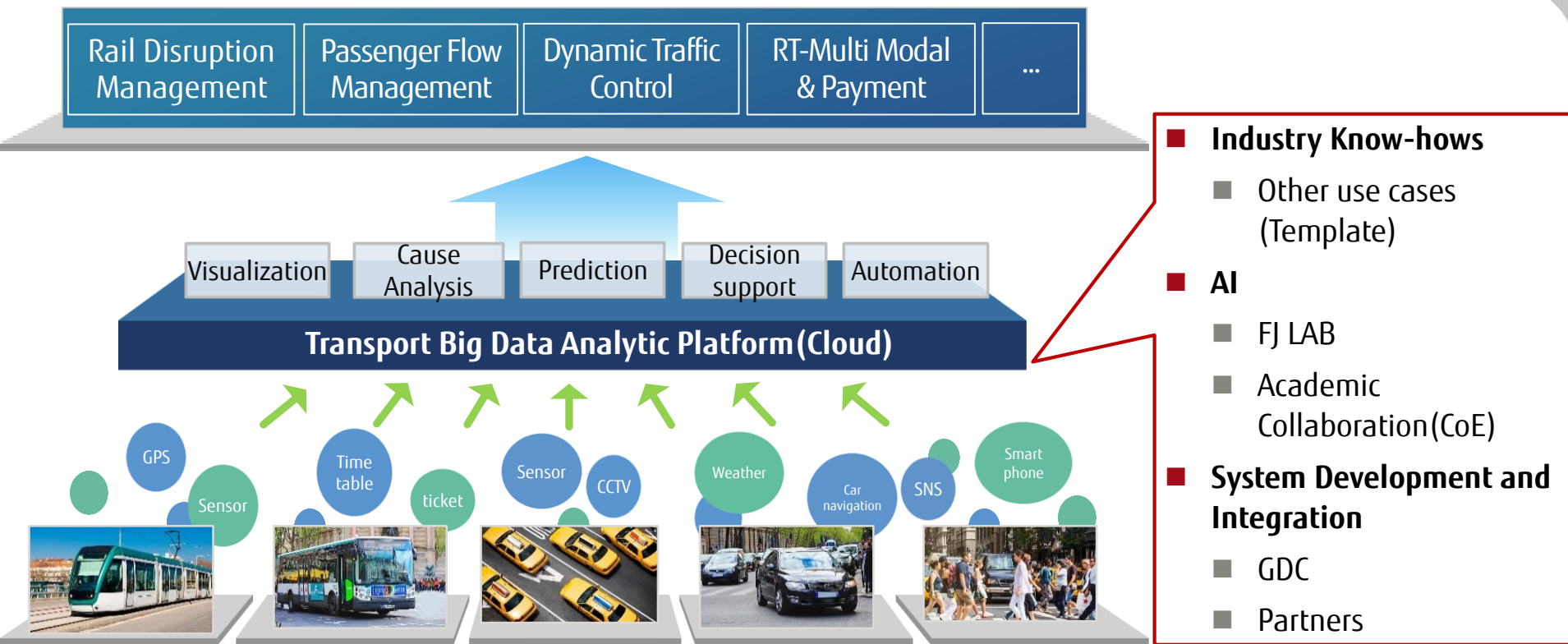
Incident Rapid Recovery

- Shorten recovery time
- Improve operational efficiency
- Reduce penalty
- Service improvement

On-Time Service

- Real-time update
- Alternative route notification

Fujitsu's Intelligent Mobility Solution for Mobility Future



References



Public
Transport



Road Traffic /
ITS



Maritime

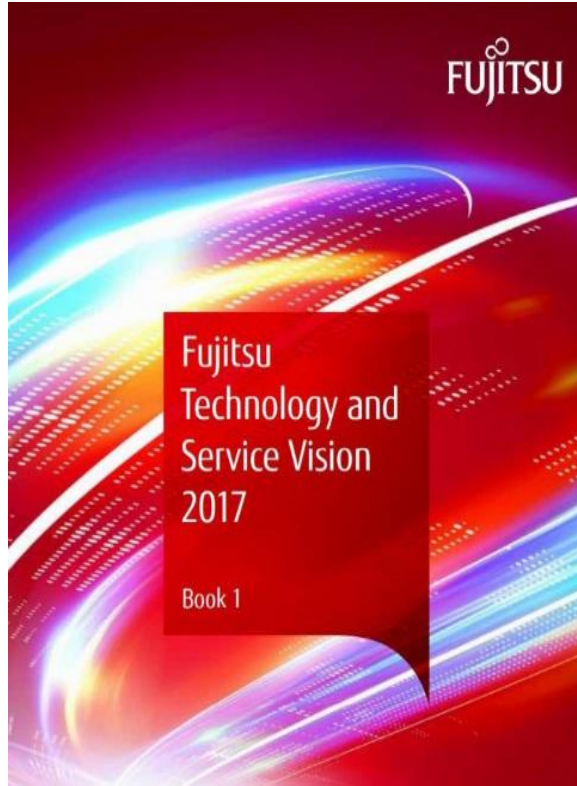


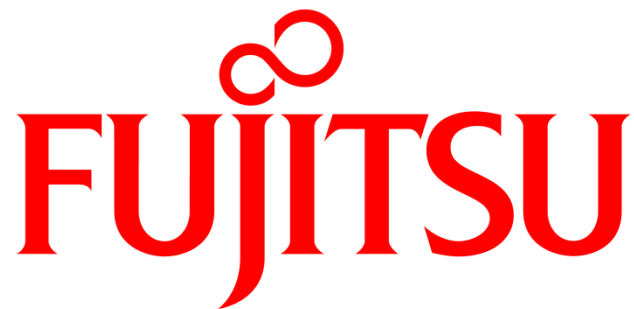
Logistics

Co-creation for Success

“Rail Disruption Management”

More Information on Web





shaping tomorrow with you