

Fujitsu recommends Windows 11 Pro.

Data Sheet

Fujitsu Notebook LIFEBOOK U9413

Your Light and Elegant Travel Companion

Are you looking for a breathtaking notebook for frequent business trips?

The Fujitsu LIFEBOOK U9413 in outstanding silver-white color and now with 14-inch screen size has a starting weight of 908g. Enterprise-grade security like PalmSecure™ keeps your business data protected from unauthorized access. Powerful performance and the embedded 5G or LTE offer you the best-in-class user experience.



New ultra-slim design in outstanding silver-white color

Extraordinarily lightweight design for business professionals who are always on the move

- Starting at 908g with a minimalist style in a magnesium housing
- The Intel® Evo™ vPro® platform delivers improved responsiveness, fast charging, and instant wake-up
- The best viewing experience is guaranteed by an anti-glare 14-inch WUXGA (1920 x 1200) 16:10 display, with optional touch screen
- Durability is Military Standard MIL-STD-810H tested



Maximum security

Protect your notebook and business data from unauthorized access at all times

- Integrated PalmSecure™ or fingerprint sensor
- FHD Infrared Camera allows face recognition with Windows Hello
- Ultra-tiny Privacy Camera Shutter
- Kensington Lock support
- SmartCard reader and TPM 2.0



Convenient mobility on the go

Highest productivity on business trips

- All-day battery runtime offers you the exceptional mobility that you need when on the move
- Anytime USB charge functionality and convenient microSD card reader
- Powerful performance, thanks to integrated SSDs, helping to process data faster

Excellent connectivity

Be flexible and stay productive in a hyper-connected world

- Compact and versatile Intel® Thunderbolt™ 4 connector to charge your laptop, transfer files at fast speeds, connect external monitors and other peripherals
- Convenient set of interfaces with full-sized HDMI and flap-style LAN connector
- WLAN, Bluetooth and 5G / LTE



Components

Base unit	LIFEBOOK U9413
Operating systems	
Operating system pre-installed	Windows 11 Pro. Fujitsu recommends Windows 11 Pro for business. Windows 11 Home Windows 10 Pro. Fujitsu recommends Windows 11 Pro for business.
Microsoft OS support information	Windows 11 requires for first device setup: - Internet connectivity - Microsoft account for Home editions or organizational account (e.g. ADD) for Pro editions After product end of life, Fujitsu continues to test and support new Windows releases for max. 5 years, depending on extension of hardware services through warranty top ups. For more details please visit our Fujitsu Service Statement under https://support.ts.fujitsu.com/IndexProdSupport.asp?lng=com&OpenTab=
Operating system notes	The use of Windows Operating System is subject to acceptance of the End User License Agreement of Microsoft as applicable under the relevant Microsoft program.
Processor	
	Intel® Core™ i7-1370P processor (14 Cores, up to 5.2 GHz) Intel® Core™ i7-1360P processor (12 Cores, up to 5 GHz) Intel® Core™ i5-1350P processor (12 Cores, up to 4.7 GHz) * Intel® Core™ i5-1340P processor (12 Cores, up to 4.6 GHz) *
	Processor only for retail, SMB, education and government
Hard disk drives (internal)	
	PCIe-SSD, 512 GB M.2 NVMe module, SED PCIe-SSD, 256 GB M.2 NVMe module, SED PCIe-SSD, 2 TB M.2 NVMe module, SED PCIe-SSD, 1 TB M.2 NVMe module, SED
Hard disk notes	Accessible capacity may vary, also depending on used software. Durability in accordance with the manufacturer's indications on read and write cycles.
Interface add on cards/components (optional)	
4G/5G (optional)	Fibocom FM350-GL (5G Sub-6/Cat.19) (Downlink speed 5G - 3740 MB/s, 4G - 1600 MB/s, Uplink speed 5G - 835 MB/s, 4G - 211 MB/s)
Display	
	35.6 cm (14.0-inch), TFT, WUXGA, 1,920 x 1,200 pixel, Anti-glare multi-touch, 400 cd/m ² , 1200:1 35.6 cm (14.0-inch), TFT, WUXGA, 1,920 x 1,200 pixel, Anti-glare display, 400 cd/m ² , 1200:1
Multimedia	
Camera	Optional: Built-in IR webcam, Full HD

Base unit

Base unit	LIFEBOOK U9413
General system information	
Chipset	Integrated in CPU
Supported capacity RAM (min.)	8 GB
Supported capacity RAM (max.)	32 GB
Memory slots	0 LPDDR5 (up to 6,400 MHz)
Memory notes	8 GB / 16 GB / 32 GB onboard LPDDR5 (6,400 MHz for 8 and 16 GB, 6,000 MHz for 32 GB) Dual channel support
LAN	10/100/1,000 MBit/s Intel® I219LM

General system information

Integrated WLAN	Intel WiFi 6E AX211 - WLAN, BT, SRD cat. 2
BIOS version	UEFI Specification 2.8
BIOS features	InsydeH2O BIOS
Audio type	On board
Audio codec	Realtek ALC257
Audio features	2x built-in speakers (stereo)
MIL-STD tested	Yes, selected MIL-STD-810H tests passed. MIL-STD-810H test results are not a guarantee of future performance under identified test conditions. Accidental damage is not covered under standard international limited warranty.
Color	Silver white
Material	Magnesium

Display

Diagonal Size	35.6 cm (14.0-inch)
Display Resolution type	WUXGA
Resolution (native)	1,920 x 1,200 pixel
Aspect ratio	16:10

Graphics

Base unit	LIFEBOOK U9413
Graphics brand name	Intel® Iris® Xe Graphics
Graphics notes	Shared memory depending on main memory size and operating system

Interfaces

Audio: line-in / line-out	1
Internal microphones	2x digital array microphones (only in combination with webcam)
USB 3.2 Gen1 (5 Gbps) total	2x Type-A (1 with Anytime USB charge functionality)
Thunderbolt™ 4 total	2x Type-C incl. USB4 (40 Gbps, Power Delivery (15W), DP 1.4 out)
HDMI	1 Supports 4k@60Hz as specified in HDMI 2.0
Ethernet (RJ-45)	1
Memory card slots	1 microSD 4.0 Standard microSD card microSDHC card microSDXC card Speed Class: up to UHS-II
SmartCard slot	1 (optional)
SIM card slot	1 (Nano-SIM, only for models with configuration WWAN ready or with 5G LTE modules)
eSIM card	eSIM integrated in 5G LTE Module
Docking connector for Port Replicator	USB Type-C
Kensington Lock support	1

Port Replicator interfaces (optional)

	USB Type-C PR	Thunderbolt™ 4 PR
DC-in	1 (19V/90W required)	1 (20V/170W required)
Power on switch	1	1
Audio: comments	1 Combo jack for headset usage	1 Combo jack for headset usage
DisplayPort	1x V1.2	2x V1.4++
VGA	1	---
HDMI text	1	V 2.0b
Interface Notes	3x Type-A - 5V/0.9A, 4.5W 1x Type-C - 15W 1x Type-C - Up to 60 W (PD v2.0-1.1) power output to client or 4.5W input	2x Type-A - 5V/0.9A, 4.5W 1x Type-A - 5V/2.4A, 12W 2x Type-C - 5V, 1.5A/4.5W charging port 1x Type-C - TBT4 up to 60 W (PD v2.0-1.1), 5-20V/3.0A upstream (PC), Intel AMT support (vPRO) 1x Type-C - TBT4 up to 15 W (PD v2.0-1.1), 5V/3.0A downstream, power output to client
Kensington Lock support	no	1

Port Replicator interfaces (optional)

Ethernet (RJ-45)	1	1 (10/100/1000 Mbit/s, 2,5 Gbps)
Notes	Number of simultaneous used displays and its possible resolutions and frequencies depend on mobile system and display interface type. Please consult always also the manual of the connected client.	

Keyboard and pointing devices

	Backlit keyboard w/o touchstick	
	Number of keyboard keys: 85, Keyboard pitch: 19 mm, Keyboard stroke: 1.5 mm	
	Multi gesture touchpad with two mouse buttons	

Wireless technologies

Antennas	2 Dual band WLAN antennas, 2+2 LTE antennas optional	
Bluetooth	v5.1 (OS limitation) - hardware is v5.3 ready	
Integrated WLAN	Intel WiFi 6E AX211 - WLAN, BT, SRD cat. 2	
WLAN encryption	WPA/WPA2/WPA3 (Wi-Fi Protected Access)	
WLAN notes	WiFi 6E is supported by Windows 11 OS only - Windows 10 OS supports WiFi 6 only. Import and usage according to country-specific regulations.	
LTE/UMTS/GPS notes	Optional	
Integrated WWAN	(5G) LTE Fibocom FM350-GL (Sub-6/cat.19) - eSIM integrated - UMTS,LTE,5G	
NFC	No	
GPS	Embedded in 5G module if configured with WWAN	

Power supply

AC Adapter	20 V / 65 W (3.25 A), 100 V - 240 V, 50 Hz - 60 Hz, 3-pin (grounded) Type-C AC-Adapter slim&light	
1st battery	64 Wh, 4,196 mAh	
Battery features	Fast Charge: Up to 80% in 1h	
Runtime 1st battery	14h 50min (up to)	
Battery notes	Battery runtime information is based on worldwide acknowledged BAPCo® MobileMark® 2018. Refer to www.bapco.com for additional details. The BAPCo® MobileMark® Benchmark provides results that enable direct product comparisons between manufacturers. It does not guarantee any specific battery runtime which actually can be lower and may vary depending on product model, configuration, application and power management settings. The battery capacity decreases slightly with every re-charge and over its lifetime.	

Noise emission

Noise emission	Please refer to the Eco Declaration	
----------------	-------------------------------------	--

Dimensions / Weight / Environmental

Dimensions (W x D x H)	308.8 x 209 x 15.8 - 17.3 mm 12.16 x 8.22 x 0.62 - 0.68 inch	
Weight	0.908 kg (starting from)	
Weight (lbs)	starting from 2 lbs	
Weight notes	Weight may vary depending on actual configuration	
Operating ambient temperature	5 - 35 °C (41 - 95 °F)	
Operating relative humidity	20 - 80 % (relative humidity)	

Compliance

Product	LIFEBOOK U9413	
Model	9U14A4	
Europe	CE CB	
USA/Canada	FCC (depending on configuration)	
Global	TCO Certification in progress ENERGY STAR® 8.0 EPEAT® Gold (dedicated regions)	
China	CCC in progress	
Compliance link	https://sp.ts.fujitsu.com/sites/certificates	

Additional Software

Additional software (preinstalled)	Microsoft Office (1 month trial for new Microsoft® Office 365 customers. Buy Microsoft Office.) Fujitsu Plugfree Network (network management utility) Fujitsu Anytime USB Charge Utility Fujitsu Function Manager Fujitsu Battery Utility Fujitsu DeskUpdate (driver and utility tool)
Additional software (optional)	Drivers & Utilities DVD (DUDVD) Recovery DVD for Windows® Microsoft® Office Professional 2021 Microsoft® Office Home and Business 2021 (Need to buy license to activate the pre-installed Microsoft Office. Purchase and activation only in the region in which it was acquired.)
Additional software (notes)	Use of accompanying and/or additional Software is subject to proactive acceptance of the respective License Agreements /EULAs/ Subscription and support terms of the Software manufacturer as applicable for the relevant Software whether preinstalled or optional. The software may only be available bundled with a software support subscription which – depending on the Software - may be subject to separate remuneration.

Manageability

Manageability technology	Intel® vPro™ technology/iAMT (depending on processor) Intel® vPro® Enterprise (optional) Intel® vPro® Essentials (optional) PXE Boot code Wake-on-LAN
Manageability software	DeskView Client DeskView Instant BIOS Management
Supported standards	WoL (Wake on LAN) PXE (Preboot Execution Environment) DMI (Desktop Management Interface) SMBIOS (System Management BIOS) CIM (Common Information Model) BootP (made4you)
Manageability link	https://www.fujitsu.com/global/products/computing/pc/manageability/

Security

Physical Security	Kensington Lock support
System and BIOS Security	User and supervisor BIOS password EraseDisk
User Security	Embedded fingerprint sensor (optional) Embedded PalmSecure® sensor (optional) Smartcard reader (optional) TPM 2.0 Hard disk password
Security Notes	The properties of the product provide a baseline for product security and therefore end-customer IT security. However, these properties are not sufficient on their own to protect the product from all existing threats, such as intrusion attempts, data exfiltration and other forms of cyberattacks. To customize security settings, please use the configuration options as available for the respective product. During operation, the IT security of this product is within the responsibility of the respective administrator/end-user of the product. Please note, that Fujitsu as a manufacturer does not make any policy prescriptions or advocacy statements regarding IT security best practices and/or general product operation.

Warranty

Warranty period	3 years
Warranty type	Next Business Day Onsite Service (Metro areas only)
Warranty Terms & Conditions	http://www.fujitsu.com/warranty
Digital bug fixes	Subject to availability and following their generic release for the product, bug fixes and function-preserving patches for product-related software (firmware) can be downloaded from the technical support at: https://support.ts.fujitsu.com/ free of charge by entering the respective product serial number. For application software supplied together with the product, please directly refer to the support websites of the respective software manufacturer.

Product Support - the perfect extension

Warranty

Recommended Service	9x5, Onsite Response Time: Next Business Day
Spare Parts availability	at least 5 years after shipment, for details see https://support.ts.fujitsu.com/
Service Weblink	http://www.fujitsu.com/emeia/products/product-support-services/

Recommended Accessories

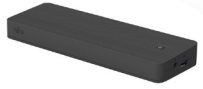
Thunderbolt™ 4 Port Replicator



First Thunderbolt™ Port Replicator on the market providing enhanced security and full support of Intel® AMT (vPro®). The universal port can easily connect almost everything with a single cable and high speed-data transfer. This smart workspace solution keeps your desk clean and tidy.

Order Code:
FPCPR401BP

USB Type-C Port Replicator 2



Connect to your peripherals. Adapt to the task on demand. The universal USB Type-C interface supports you to get your peripheral devices connected easily. Multiply your USB ports to connect your peripherals as well as your external display via HDMI, DisplayPort or VGA. You also can charge your external USB devices without the need of any additional charger.

Order Code:
S26391-F3327-L100

More information

Fujitsu products, solutions & services

In addition to Fujitsu Notebook LIFEBOOK U9413, Fujitsu provides a range of platform solutions. They combine reliable Fujitsu products with the best in services, know-how and worldwide partnerships.

Fujitsu Portfolio

Build on industry standards, Fujitsu offers a full portfolio of IT hardware and software products, services, solutions and cloud offering, ranging from clients to datacenter solutions and includes the broad stack of Business Solutions, as well as the full stack of Cloud offering. This allows customers to leverage from alternative sourcing and delivery models to increase their business agility and to improve their IT operation's reliability.

Computing Products

www.fujitsu.com/global/products/computing/

Software

www.fujitsu.com/software/

More information

Learn more about Fujitsu Notebook LIFEBOOK U9413, please contact your Fujitsu sales representative or Fujitsu Business partner, or visit our website.
www.fujitsu.com/emeia/products/computing/pc/notebooks/index.html

Fujitsu green policy innovation

Fujitsu Green Policy Innovation is our worldwide project for reducing burdens on the environment.

Using our global know-how, we aim to contribute to the creation of a sustainable environment for future generations through IT.

Please find further information at <http://www.fujitsu.com/global/about/environment/>



Copyrights

All rights reserved, including intellectual property rights. Changes to technical data reserved. Delivery subject to availability. Designations may be trademarks and/or copyrights of the respective manufacturer, the use of which by third parties for their own purposes may infringe the rights of such owner. For further information see <http://www.fujitsu.com/emeia/resources/navigation/terms-of-use.html>
Copyright 2023 Fujitsu Technology Solutions GmbH

Disclaimer

Please note that the data sheet reflects the technical specification with the maximum selection of components for the named system and not the detailed scope of delivery. The scope of delivery is defined by the selection of components at the time of ordering. Technical data is subject to modification and delivery subject to availability. Any liability that the data and illustrations are complete, actual or correct is excluded. Designations may be trademarks and/or copyrights of the respective owner, the use of which by third parties for their own purposes may infringe the rights of such owner. The overall product has been designed and manufactured for general office use, regular personal use and ordinary industrial use.

CONTACT

Fujitsu Technology Solutions GmbH
Website: www.fujitsu.com
2023-04-26 EM-EN

All rights reserved, including intellectual property rights. Changes to technical data reserved. Delivery subject to availability. Designations may be trademarks and/or copyrights of the respective manufacturer, the use of which by third parties for their own purposes may infringe the rights of such owner. For further information see <http://www.fujitsu.com/emeia/resources/navigation/terms-of-use.html>
Copyright 2023 Fujitsu Technology Solutions GmbH