



# Fujitsu World Tour 2018

Workplace of the Future

FUJITSU

shaping tomorrow with you

Human Centric Innovation

Co-creation  
for Success

# BOS 2: The Workplace of the Future

FUJITSU

**Ivar Fennema**

Offerings Manager Digital Workplace Services

Fujitsu EMEA

@IvarFennema

# Digitalization is changing our world

Everything is connected  
anywhere, anytime



Using Hybrid IT, Cloud,  
Big Data, Analytics  
and Machine Learning



Innovative business models &  
Immediate customer and  
business benefits



Business process efficiency and  
fast information access through  
Automation and Artificial  
Intelligence

Digital Transformation is about *changing* our models,  
and not only making the existing ones much more efficient



# Technology disruption as the new normal

Cloud Computing



Artificial Intelligence



Internet of Things



Machine Learning

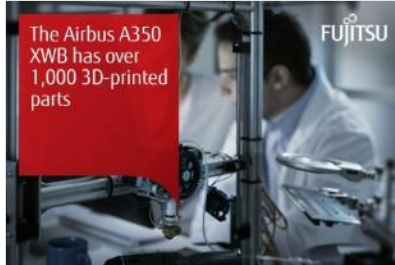


New Interfaces



The Airbus A350 XWB has over 1,000 3D-printed parts

3D Printing



Virtual Reality & AR



Cognitive Robotics

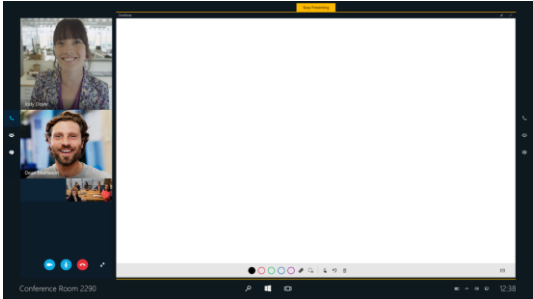


and much more is coming – *ever faster ...*

# Multi Generation & Cultural Workforce

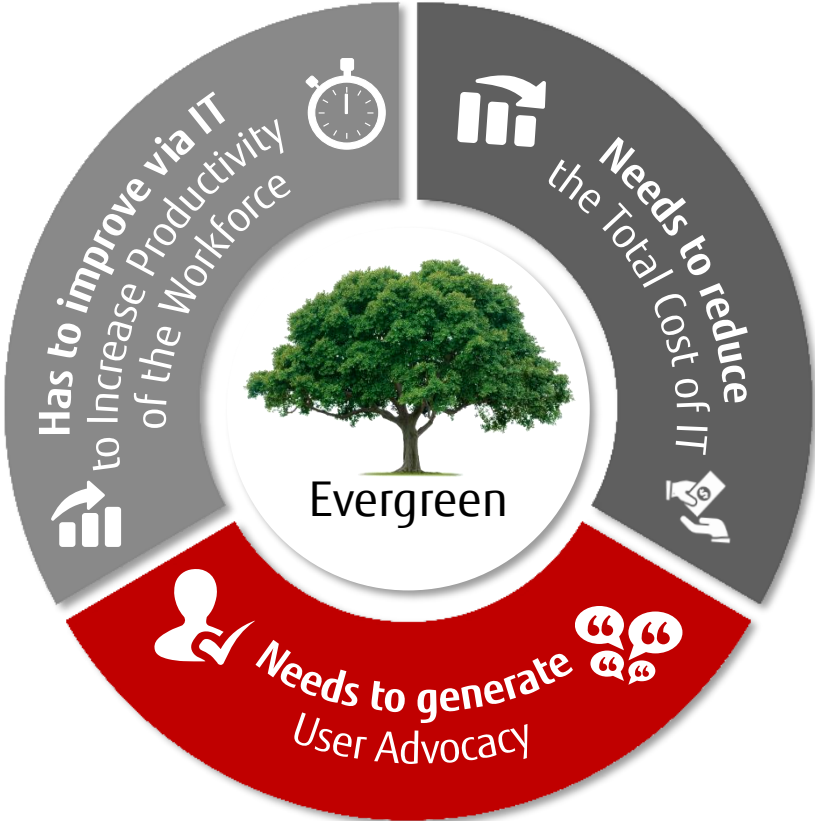


# Extending the End User Device Scope



# Biggest changes around workplace







# Workplace Anywhere



Unified set of complementary technologies that enable employees to simplify their interactions and maximise their productivity.

Securely combining Cloud, Managed and Virtual Workplace Services to get the right blend for you.



Cloud Managed Workplace



Managed Workplace



Virtual Workplace & Application



Microsoft Office 365



Windows as a Service



App Store



Analytics



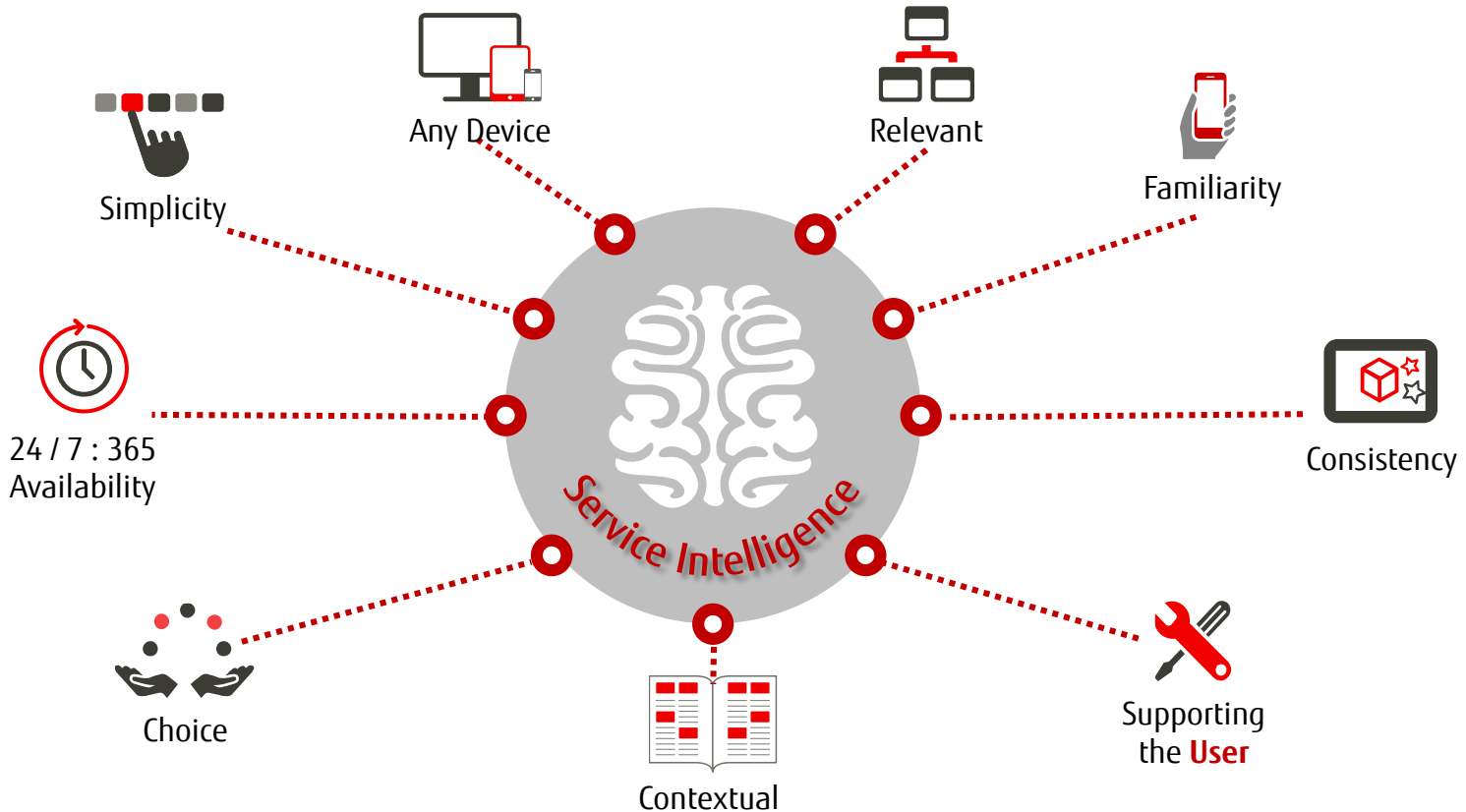
Identity, Policy & Security Management



Software & Device Asset Management

And our **evergreen services** ensure you have access to the *latest* technology.

# Social Command Centre



# Intelligent Engineering



Connect IT Bar combined with HR and Facilities

# Gartner recognizes Fujitsu as a Leader for Managed Workplace Services in Europe



## Magic Quadrant for European Managed Workplace Services



Within the Gartner Magic Quadrant for Managed Workplace Services, Europe Fujitsu are once again positioned in the Leaders quadrant. Best of all, we are positioned for our completeness of vision and as one of the highest for our 'ability to execute'.

According to Gartner

- Leaders deliver their service solutions skillfully, have a clear vision of the direction of the service market, and are actively building and improving their competencies to sustain their leadership positions. The Leaders quadrant indicates the direction of the MWS market. However, most digital workplace offerings still have low adoption rates.
- Leaders have demonstrated their experience in delivering MWS and understand the requirements to successfully deliver these services. They have proved their ability to execute and their strategic visions.

The full report is available on <https://bit.ly/FJDWSMQ2018>

### Magic Quadrant Disclaimer

Gartner Magic Quadrant for Managed Workplace Services, Europe by David Groombridge, Claudio Da Rold, Federica Troni, Nikos Drakos, January 3, 2018

This graphic was published by Gartner, Inc. as part of a larger research document and should be evaluated in the context of the entire document. The Gartner document is available upon request from Fujitsu.

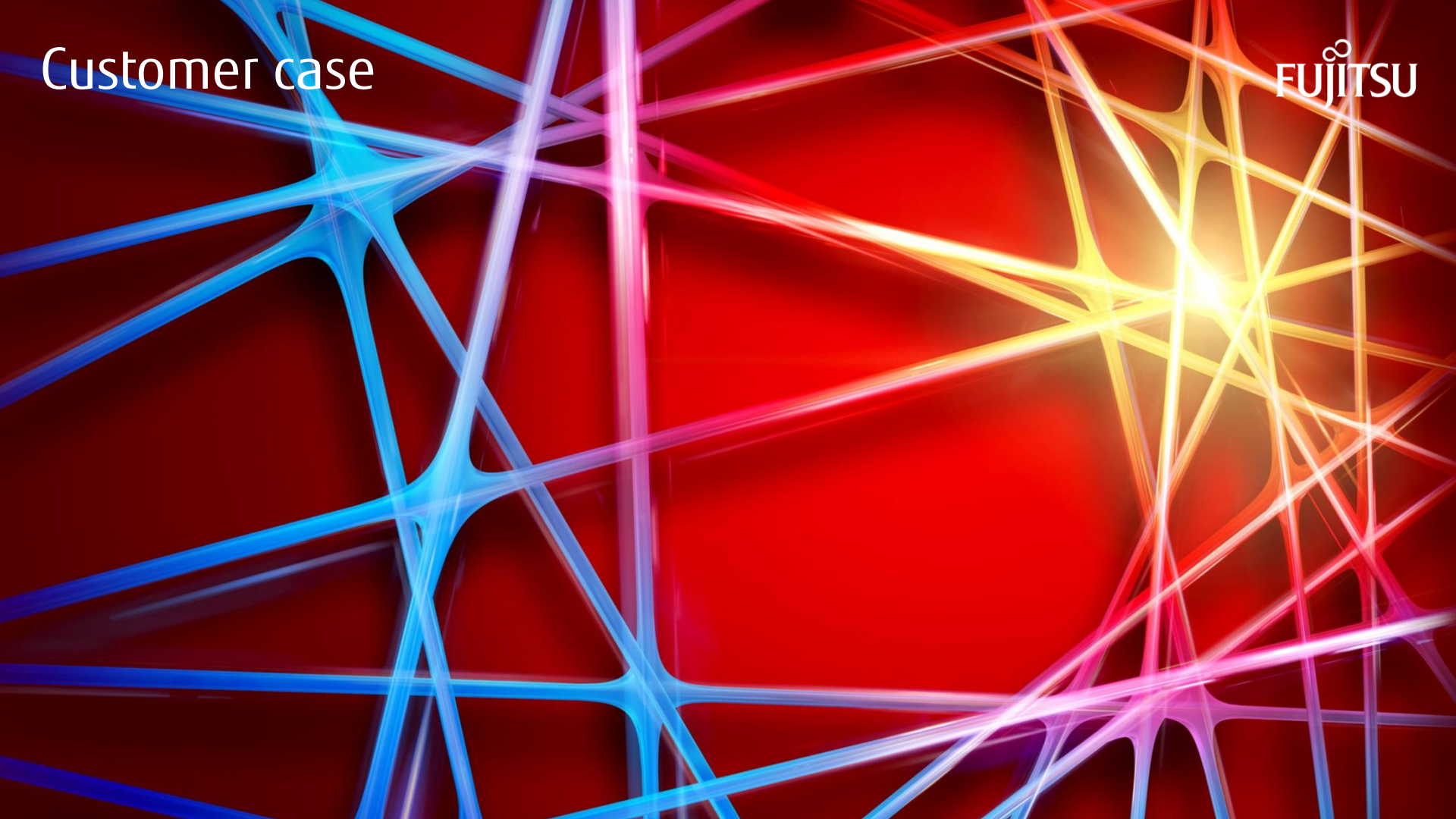
Gartner does not endorse any vendor, product or service depicted in its research publications, and does not advise technology users to select only those vendors with the highest ratings or other designation. Gartner research publications consist of the opinions of Gartner's research organization and should not be construed as statements of fact. Gartner disclaims all warranties, expressed or implied, with respect to this research, including any warranties of merchantability or fitness for a particular purpose.

Source: Gartner (January 2018)



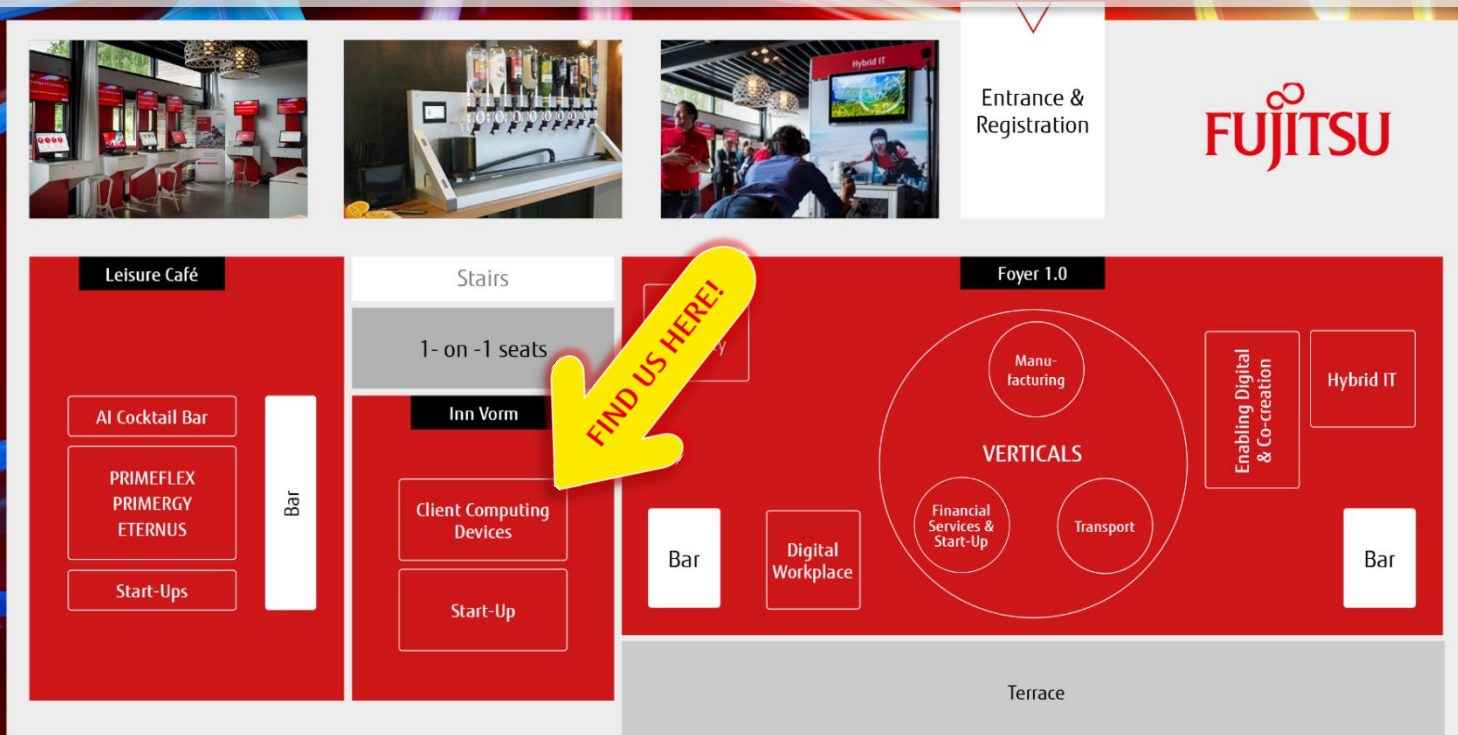
Customer case

FUJITSU



# Wrap up – 3 actions

## 1 - Visit our booth: Cool devices



# Fujitsu Client Compute Devices



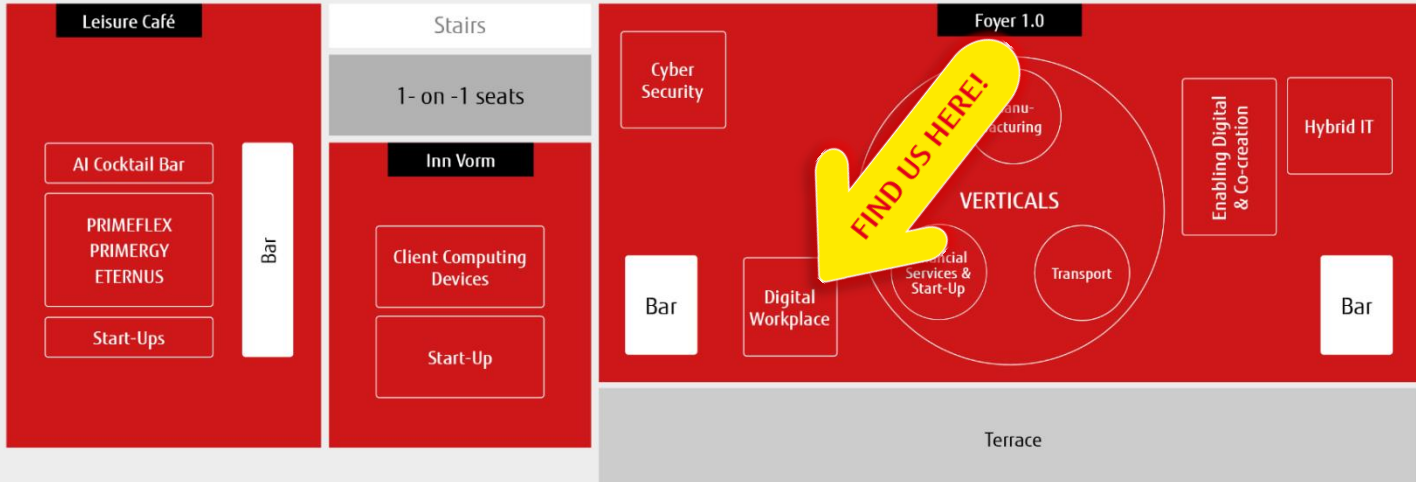


# Wrap up – 3 actions

## 2 - Visit our booth: Workplace Services



Entrance & Registration





# Fujitsu Digital Workplace Services summary



## Workplace Anywhere

Fujitsu's workplace solution improves the **User Experience** by providing solutions aligned to cloud users, hybrid users and virtual desktop users

**Social Command Centre**  
The SCC enables **User Productivity** by driving self service and embedding Artificial Intelligence to create a genuinely useful offering



## Intelligent Engineering

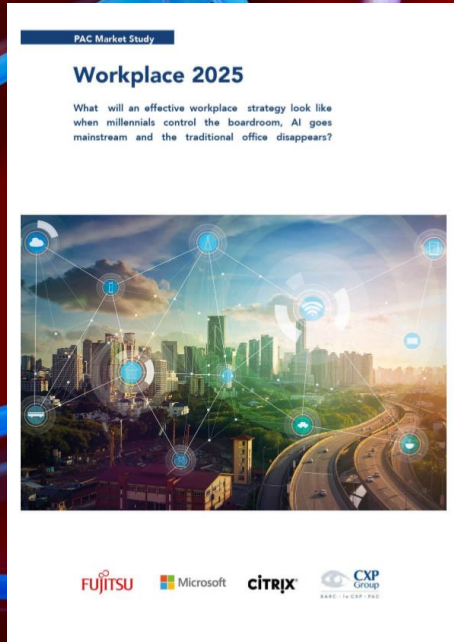
Delivers pro-active hardware and on-site support services underpinned by analytics and intelligence to drive improved **Business Platform Availability**

Fujitsu believes the most critical mission of technology is to *empower people.*

# Wrap up – 3 actions



## 3 – Read our Workplace 2025 vision and learn about our Fujitsu Vision



The background of the image is a complex network of glowing, translucent lines in various colors including blue, cyan, magenta, and yellow. These lines intersect to form a web-like structure. The Fujitsu logo, consisting of an infinity symbol above the word 'FUJITSU' in a red, serif font, is centered in the upper half of the image. Below the logo, the tagline 'shaping tomorrow with you' is written in a black, sans-serif font.

**FUJITSU**

shaping tomorrow with you