

FUJITSU Software

Infrastructure Manager Plug-in for VMware

vCenter Server 1.2



Setup Guide

For vCenter Server 6.0

CA92344-2588-01

August 2018

Contents

| | |
|---|----|
| Preface | 3 |
| Purpose..... | 3 |
| Index..... | 3 |
| Intended Readers | 3 |
| Notation in this guide | 3 |
| High Risk Activity | 4 |
| Trademarks..... | 5 |
| 1. Product Summary..... | 6 |
| 2. Contents | 6 |
| 3. Software Requirements | 6 |
| 4. Installation Procedures | 7 |
| 4.1 Before installation | 7 |
| 4.2 Execute the install file | 8 |
| 4.3 Register the necessary information in ISM Plug-in | 12 |
| 4.4 Import the SSL Server Certificate | 16 |
| 4.5 How to use ISM Plug-in | 22 |
| 5. Folder Structure after Installation..... | 26 |
| 6. How to utilize ISM..... | 27 |
| 7. Uninstallation Procedures | 27 |
| 8. Precautions..... | 27 |
| 9. Latest Information..... | 27 |

Preface

Purpose

This Setup Guide describes the installation procedure, precautions on usage and information for FUJITSU Software Infrastructure Manager Plug-in for VMware vCenter Server 1.2 (hereafter referred to as “ISM Plug-in”).

Index

1. [Product Summary](#)
2. [Contents](#)
3. [Software Requirements](#)
4. [Installation Procedures](#)
5. [Folder Structure after Installation](#)
6. [How to utilize ISM](#)
7. [Uninstallation Procedure](#)
8. [Precautions](#)
9. [Latest Information](#)

Intended Readers

This guide is designed for readers who have sufficient knowledge on hardware and software, such as system administrators, network administrators, facility administrators and related service providers.

Notation in this guide

Notation

Keyboard

Keystrokes with no printed characters are displayed by key icons, such as [Enter] or [F1]. For example, [Enter] means press key labeled [Enter].

Multiple lines

Thick multiple lines are ruled before the important information for each procedure as follows:

Point

Describes important information for each subject.

Note

Describes subjects where attention is necessary.

Variables: <xxx>

Represents variables that can be replaced by numerical values or text strings in accordance with the environment.

Example: <IP address>

Abbreviations

In this guide, the following abbreviations may be used.

| Product Name | Abbreviation |
|---|--------------|
| FUJITSU Software Infrastructure Manager | ISM |
| FUJITSU Software Infrastructure Manager Plug-in for VMware vCenter Server | ISM Plug-in |
| VMware vCenter Server | vCenter |

Terms

For the major terms and abbreviations used in this manual, see "Infrastructure Manager V2.3 Glossary."

High Risk Activity

The Customer acknowledges and agrees that the Product is designed, developed and manufactured as contemplated for general use, including without limitation, general office use, personal use, household use, and ordinary industrial use, but is not designed, developed and manufactured as contemplated for use accompanying fatal risks or dangers that, unless extremely high safety is secured, could lead directly to death, personal injury, severe physical damage or other loss (hereinafter "High Safety Required Use"), including without limitation, nuclear reaction control in nuclear facility, aircraft flight control, air traffic control, mass transport control, medical life support system, missile launch control in weapon system. The Customer shall not use the Product without securing the sufficient safety required for the High Safety Required Use. In addition, Fujitsu (or other affiliate's name) shall not be liable against the Customer and/or any third party for any claims or damages arising in connection with the High Safety Required Use of the Product.

Trademarks

Microsoft, Windows, Windows Vista, Windows Server, Hyper-V, Active Directory, and the titles or names of other Microsoft products are trademarks or registered trademarks of Microsoft Corporation in the United States and other countries.

VMware, VMware logo, VMware ESXi, VMware SMP, and vMotion are trademarks or registered trademarks of VMware, Inc. in the United States and other countries.

All other company and product names are trademarks or registered trademarks of the respective companies.

All other products are owned by their respective companies.

Copyright

Copyright Fujitsu Limited 2018 All rights reserved.

This manual shall not be reproduced or copied without the permission of Fujitsu Limited.

1. Product Summary

This plug-in software is designed to extend the user interface of VMware vCenter Server (hereafter referred to as "vCenter") to enable the use of the functions of FUJITSU Software Infrastructure Manager (hereafter referred to as "ISM") from vCenter console to integrate the infrastructure management. This plug-in software enables you to operate ISM directly from the vSphere Web Client.

2. Contents

This plug-in software is composed of the following five (5) files:

- ISMvCenter_INSTALL.exe
- Readme.txt
- Readme_en.txt
- Setup Guide (Japanese)
- Setup Guide (*this document)

3. Software Requirements

Applications that must be installed:

- FUJITSU Software Infrastructure Manager V2.0 and later
- VMware vCenter Server V.6.0

Minimum Browser Version Requirements:

- Microsoft Internet Explorer 11 or later
 - * For the 3D view functions of ISM, you must install the latest version; 11.0.19 or later
- Mozilla Firefox 38 or later
- Google Chrome 43 or later

Please refer to the User's Manual of ISM for more information.

4. Installation Procedures

This section explains installation procedures of ISM Plug-in into vCenter.

Please execute the following four (5) steps:

- 4.1 [Before installation](#)
 - 4.2 [Execute the installation file](#)
 - 4.3 [Register the necessary information in ISM Plug-in](#)
 - 4.4 [Import the SSL Server Certificates](#)
 - 4.5 [How to use ISM Plug-in](#)
-

4.1 Before installation

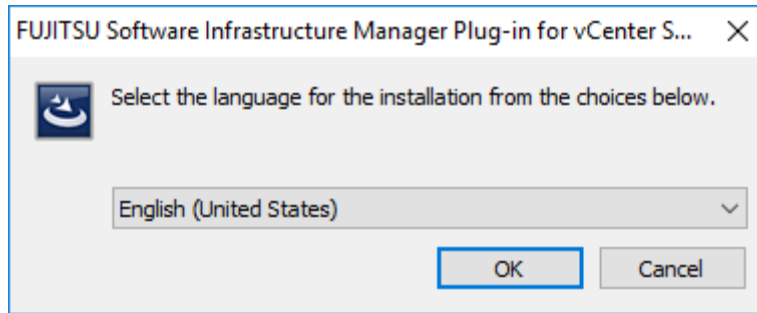
Note

- The version of OpenSSL in vCenter Server must be compatible with OpenSSL in ISM. Without compatibility, it does not work properly. Kindly check the version of vCenter Server before the installation. The versions of Open SSL must be version 1.0.x.
Ex.) 1.0.1a, 1.0.2.a.... etc.
 - Make sure to apply the latest patch versions for vCenter to avoid errors occurring. Click the following URL and find the patch versions below from “Correct Answer No.50”.
<https://communities.vmware.com/thread/530994?start=50&tstart=0>
(reference: VMware TECHNOLOGY NETWORK)
For 6.0 Patch2 : UserSessionServiceImpl_class_60p02_build3271482.zip
class_loading_patch_for_60p02_build3271482.zip
For 6.0 Update2 : UserSessionServiceImpl_class_60u2_build3617395.zip
class_loading_patch_for_60u2_build3617395.zip
 - Uninstall the ISM Plug-in (version 1.0) in advance if it is already applied in ISM.
-
-

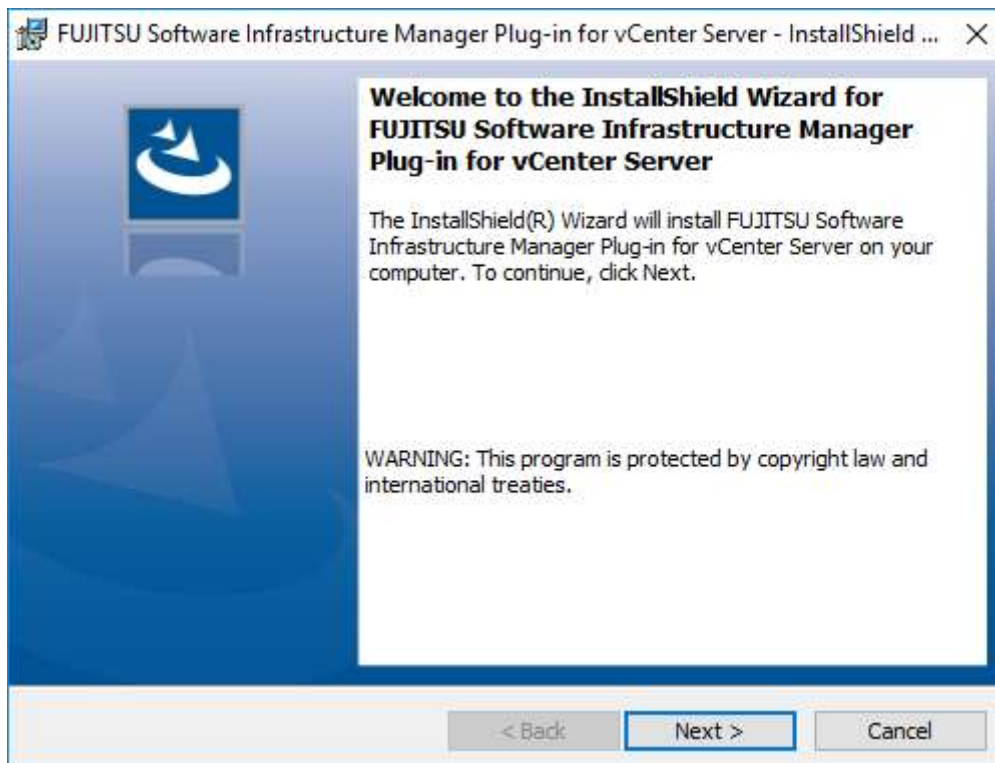
4.2 Execute the install file

4.2.1 Double click [ISMvCSA_INSTALL.exe] and open the file.

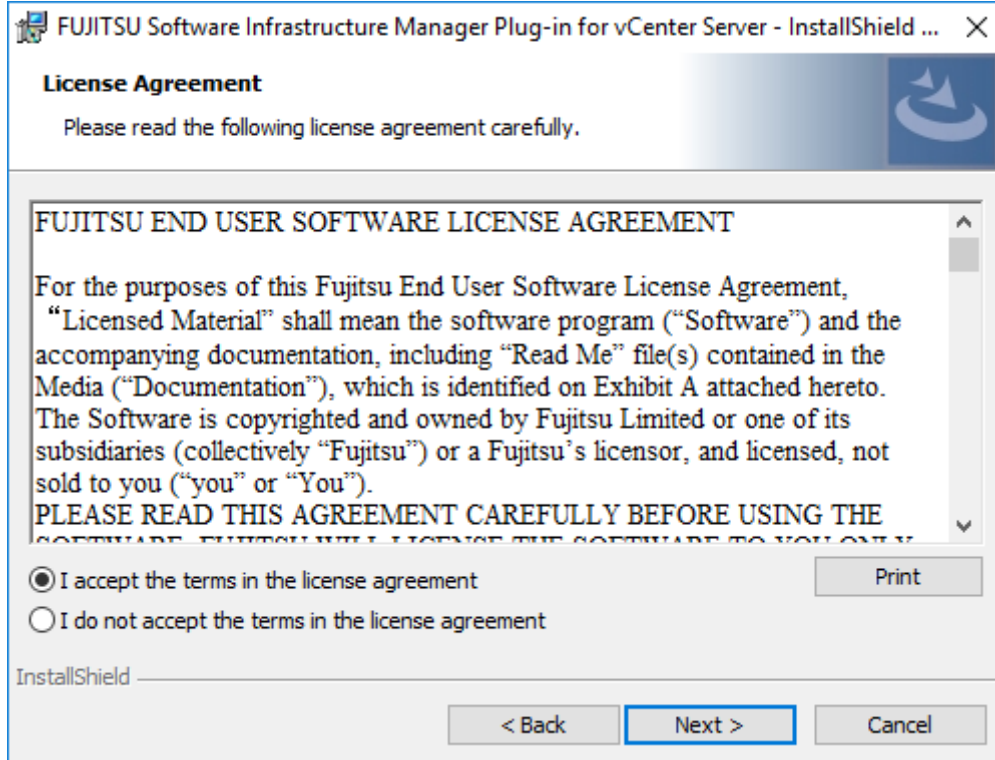
4.2.2 Select language for the installation procedures.



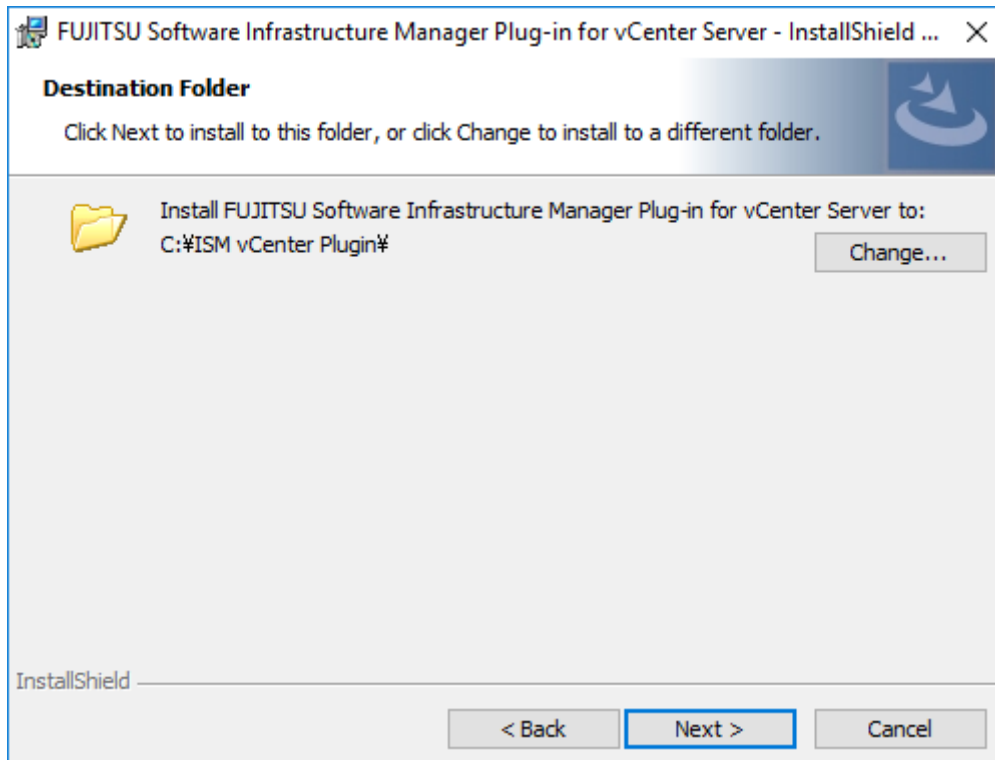
4.2.3 When the preparations are completed, the installation wizard is displayed. Click [Next].



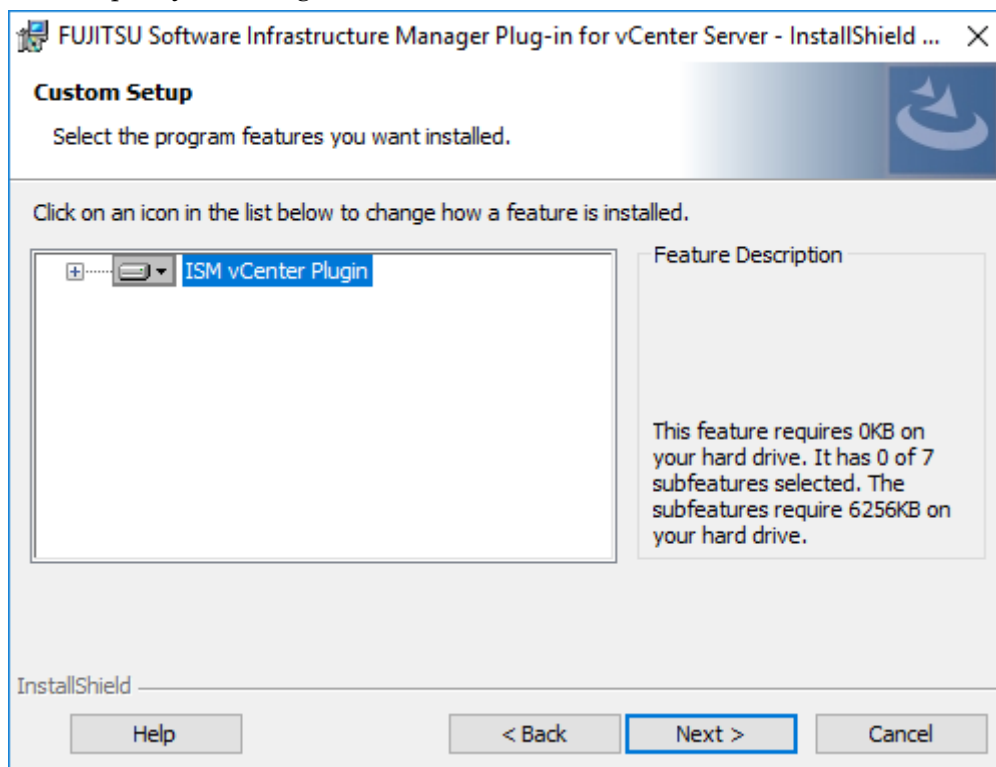
4.2.4 The EULA is displayed. Read the contents and select [I accept the terms].



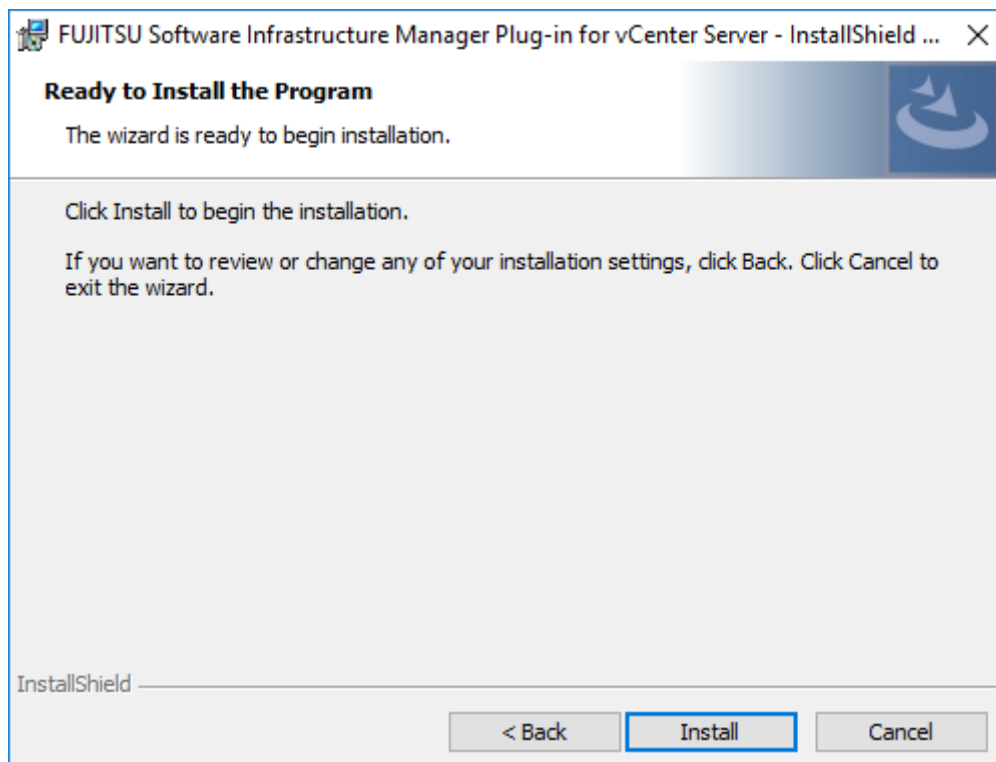
4.2.5 Specify the installation destination. To change the destination, click [Change].



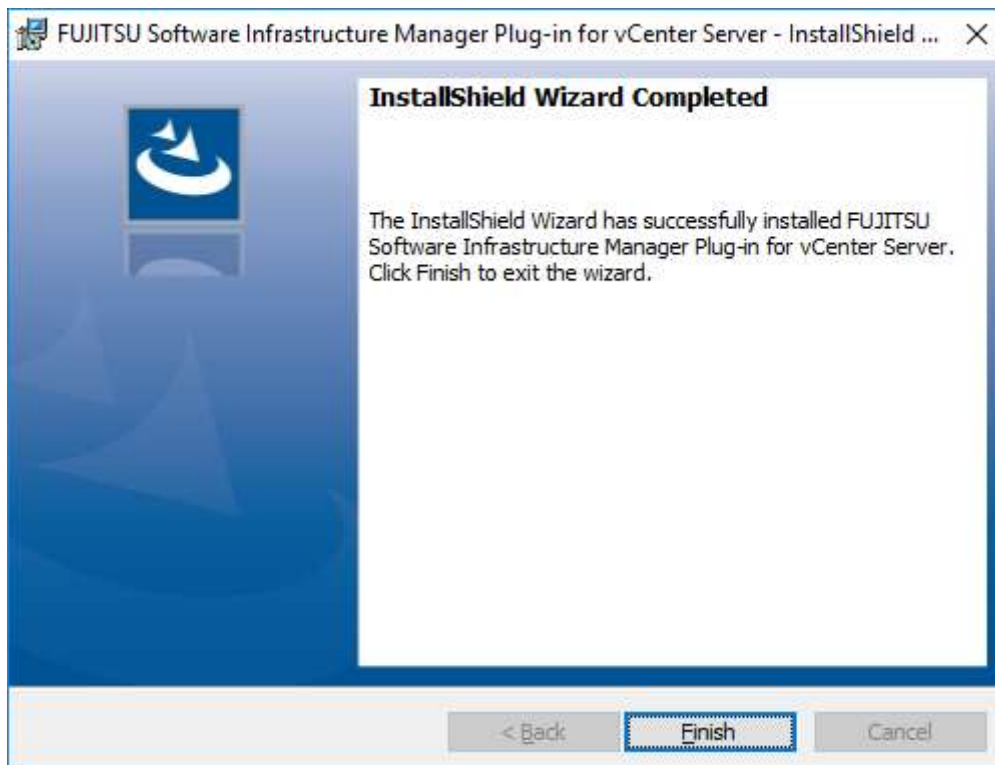
4.2.6 Specify the designated folder and click [NEXT].



4.2.7 Click [Install] and the installation starts automatically.



4.2.8 After the installation is completed, the message below is displayed. Click [Finish].

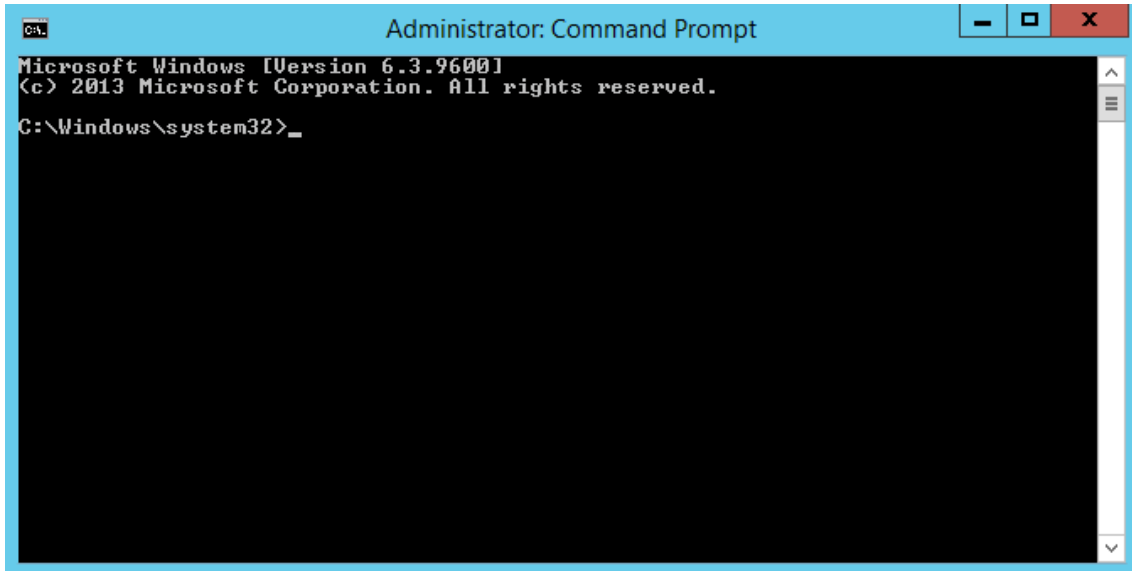


4.2.9 Restart the OS where the ISM plug-in is installed.

4.3 Register the necessary information in ISM Plug-in

Register the necessary information in ISM Plug-in from command prompt.

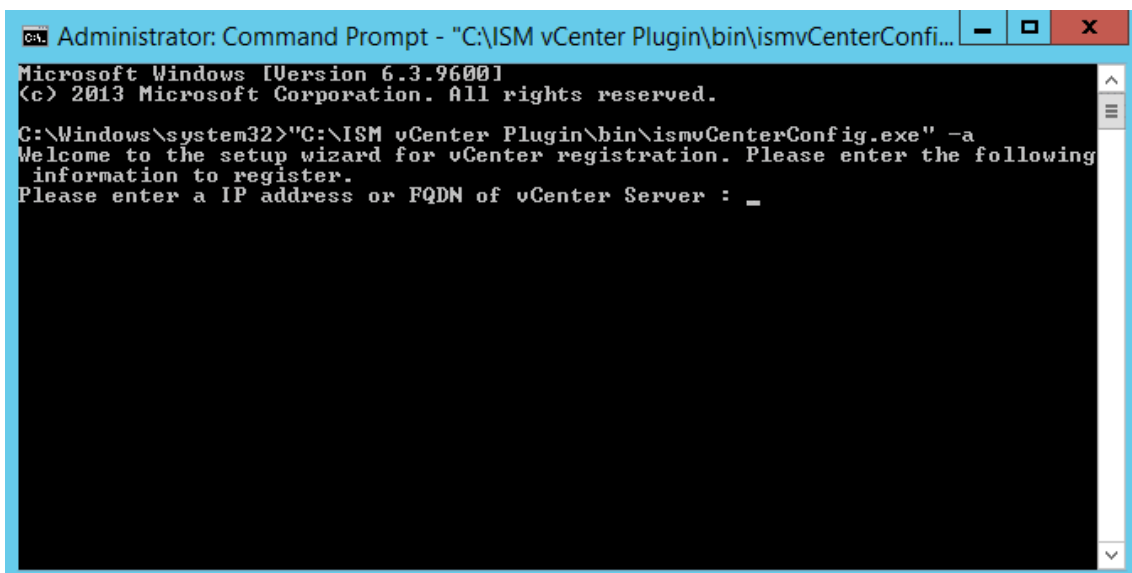
4.3.1 Right click the Start menu and select [Command Prompt (Admin)].



4.3.2 Execute the following command.

<Install destination folder name>\bin\ismvCenterConfig.exe -a

Example:



4.3.3 Follow the directions and enter the information below.

```
Welcome to the setup wizard for vCenter registration. Please enter the following
information to register.
Please enter a IP address or FQDN of vCenter Server : <IP address or FQDN of vCenter>
Please enter a valid user name of vCenter Server : <user name of vCenter Server>
Please enter a password for the user name : <password of vCenter Server>
Registration completed successfully.

C:\Windows\system32>
```

Point

- Execute the following command to check the registered information.

```
<Install destination folder name>\bin\ismvCenterConfig.exe -l
Picked up JAVA_TOOL_OPTIONS: -Xms32M -Xmx128M
vCenter IP address or FQDN=<IP Address or FQDN for vCenter> Account=<
administrator@vsphere.local>
```

- To correct or replace the server information, delete the information using the following command. Then register the information again.

```
<Install destination folder name>\bin\ismvCenterConfig.exe -d <User name for vCenter>

Unregistration completed successfully.
```

- If ISM Plug-in is used among multiple vCenter users, register all the vCenter users planning to use ISM Plug-in by repeating procedure 4.3.3. If multiple users are registered, the information of vCenter Server is as follows.

```

<Install destination folder name>%bin%ismvCenterConfig.exe -l
Picked up JAVA_TOOL_OPTIONS: -Xms32M -Xmx128M
vCenter IP address or FQDN=<IP Address or FQDN for vCenter> Account=<
administrator@vsphere.local>
vCenter IP address or FQDN=<IP Address or FQDN for vCenter> Account=<
user1@vsphere.local>
vCenter IP address or FQDN=<IP Address or FQDN for vCenter> Account=<
user2@vsphere.local>

```

- When vCenter users without administrator privilege use ISM Plug-in, assign "Extension" permission to the users in vCenter. Refer to the product guides of VMware for more details.

4.3.4 Register the ISM server information in ISM Plug-in.

```

<Install destination folder name>%bin%ismServerConfig.exe -a
Welcome to the setup wizard for ISM(Infrastructure Manager). Please e
nter the following information to register.
Please enter a IP address or FQDN of ISM Server : <IP address or FQDN of ISM Server>
Please enter a Port Number of ISM Server : <Port Number of ISM Server>
Please enter a valid user name of ISM Server : <user name of ISM Server>
Please enter a password for the user name : <password of ISM Server>

Please enter a valid user name of vCenter that correspond to user name of ISM Se
rver: <user name of ISM Server>

Registration completed successfully.

C:%Windows%system32>

```

Point

- Execute the following command to check the registered information.

```
<Install destination folder name>%bin%ismServerConfig.exe -l  
ISM IP address or FQDN=<192.168.1.100> ISM Port=<25566> ISM Account=<administrator>  
vCenter Account=<administrator@vsphere.local>
```

- To correct or replace the server information, delete the information using the following command. Then register the information again.

```
<Install destination folder name>%bin%ismServerConfig.exe -d <User name for ISM>  
Unregistration completed successfully.
```

- If ISM Plug-in is used among multiple vCenter users, register all the vCenter users planning to use ISM Plug-in by repeating procedure 4.3.4. Create ISM users for each vCenter user you are planning to register, because an ISM user cannot be shared among multiple vCenter users. If multiple users are registered, the information of ISM Server is as follows.

```
<Install destination folder name>%bin%ismServerConfig.exe -l  
Picked up JAVA_TOOL_OPTIONS: -Xms32M -Xmx128M  
ISM IP address or FQDN=<192.168.1.100> ISM Port=<25566> ISM Account=<administrator>  
vCenter Account=<administrator@vsphere.local>  
ISM IP address or FQDN=<192.168.1.100> ISM Port=<25566> ISM Account=<ISMuser1>  
vCenter Account=<user1@vsphere.local>  
ISM IP address or FQDN=<192.168.1.100> ISM Port=<25566> ISM Account=<ISMuser2>  
vCenter Account=<user2@vsphere.local>
```

4.4 Import the SSL Server Certificate

4.4.1 Import the SSL Server Certificate

Note

It is necessary to import the SSL Server Certificate in advance into the devices which should be connected to vCenter. **Without Certificate, an error message appears.

1. Prepare the SSL Server Certificate.

Point

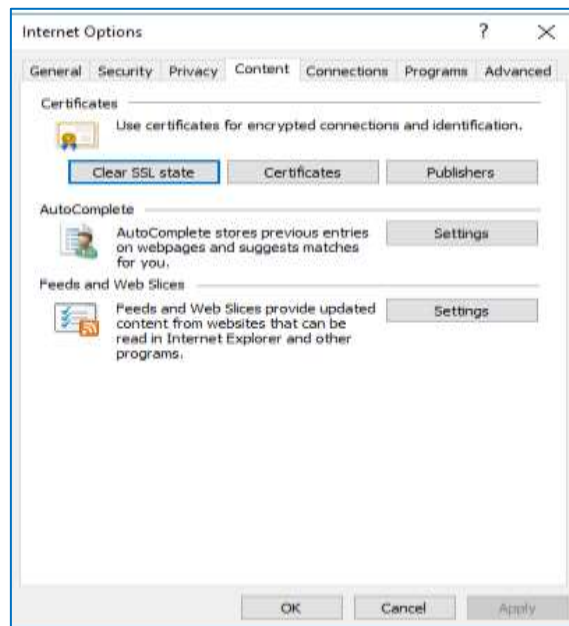
- Prepare the SSL Server Certificate according to Chapter 4.7.1 “Deployment of SSL Server Certificates” in User’s Manual of ISM.

Make sure to complete the certificate import on the intended devices.

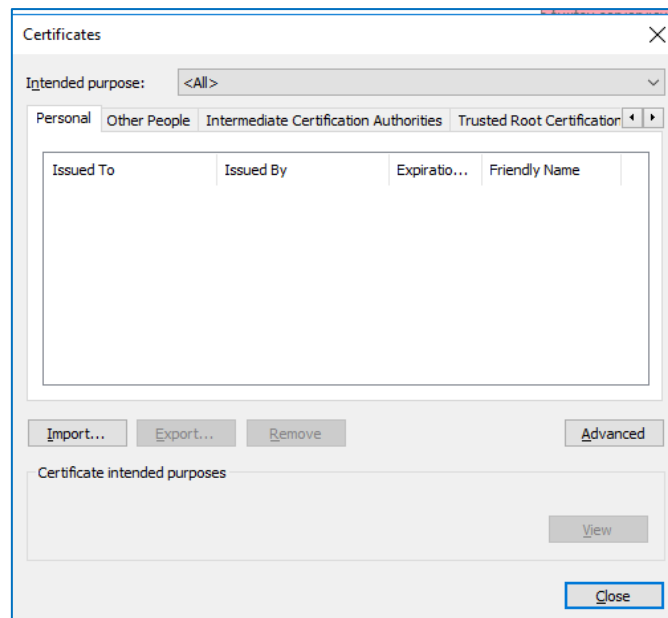
- For the use of FireFox, refer to Chapter 2.1.1 “GUI” in User’s Manual of ISM to complete the certificate import.
-
-

2. From the browser on the intended devices, select [Internet options] under [Settings].

3. Select [Contents] and click [Certificates].



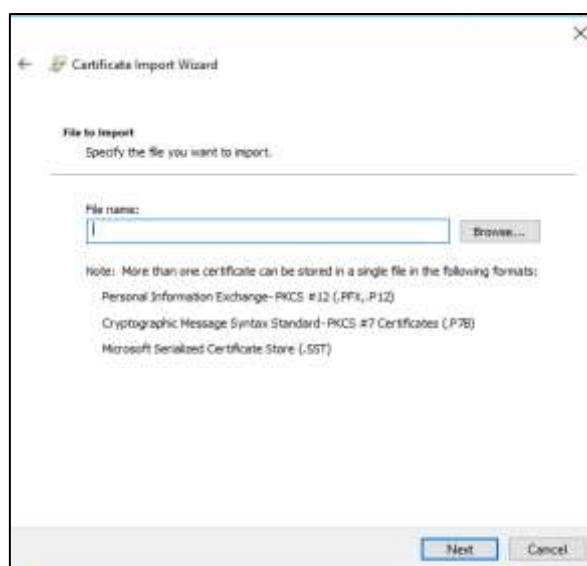
4. Click [Import] and launch the import wizard.



5. The import wizard appears. Click [Next].

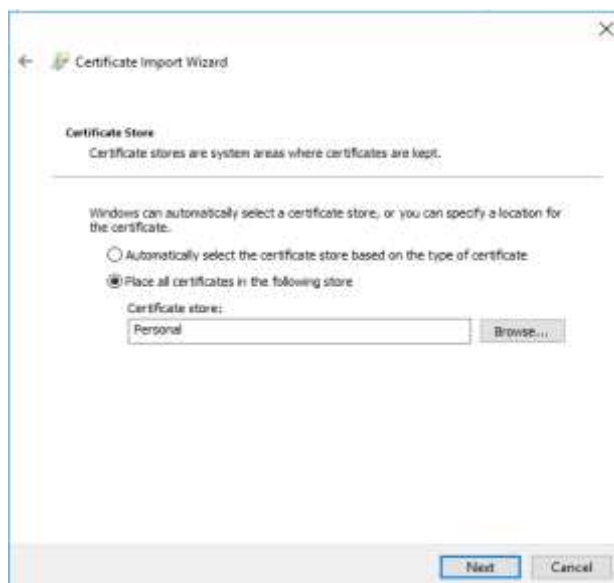


6. Select the downloaded file.

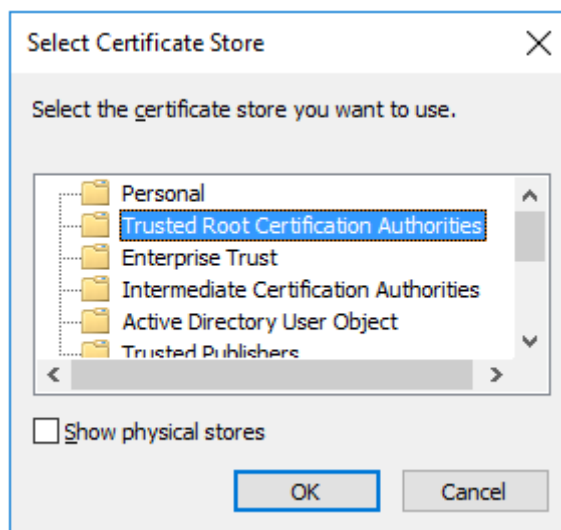


7. Click [Next].

8. Check the [Place all certificates in the following store] box and click [Browse].

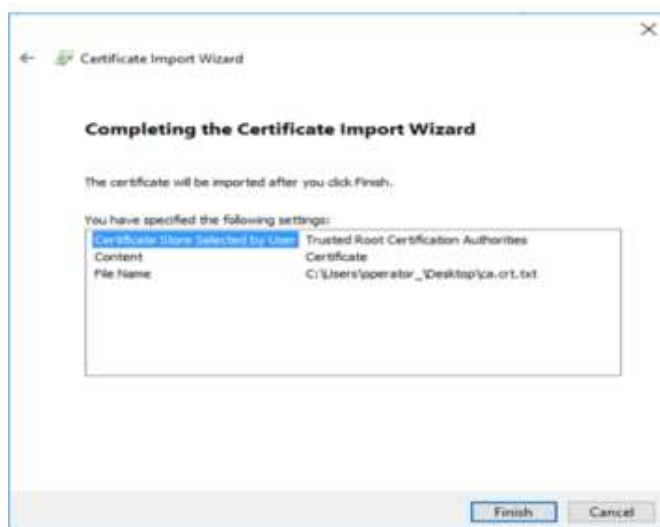


9. Select [Trusted Root Certification Authorities] and click [OK].

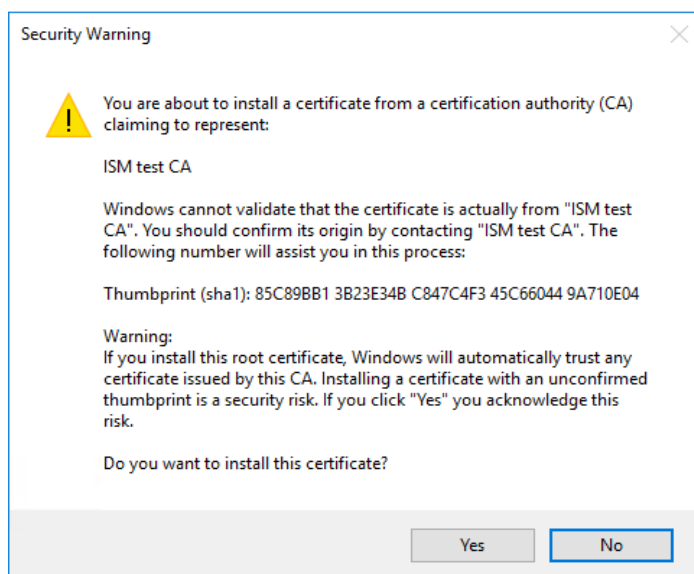


10. Click [Next].

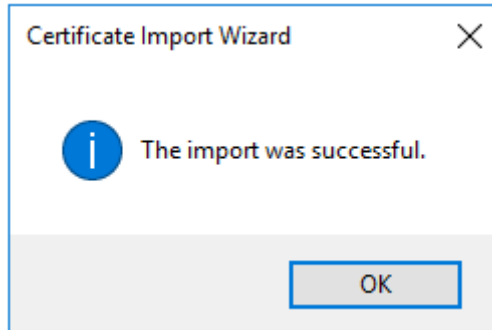
11. Click [Finish].



12. Click [Yes] on the security alert dialog.



13. The message [The import was successful] appears. Click [OK] to close the dialog box.

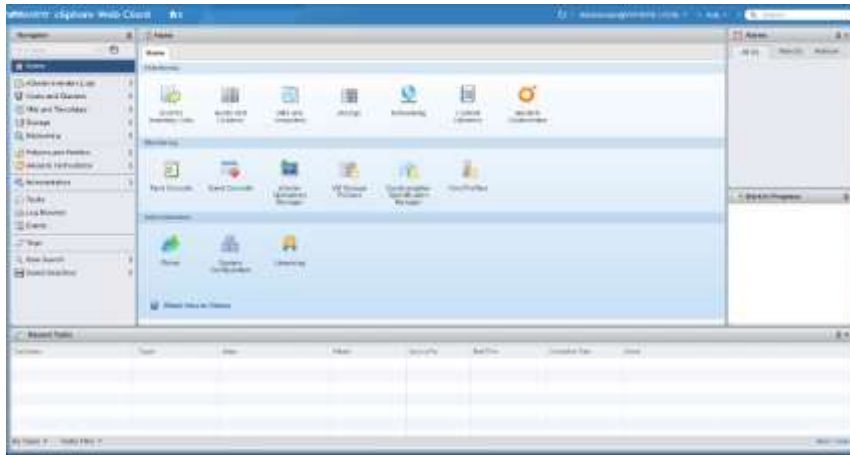


14. Login to ISM and confirm that there are no errors.

4.5 How to use ISM Plug-in

4.5.1 How to use ISM Plug-in

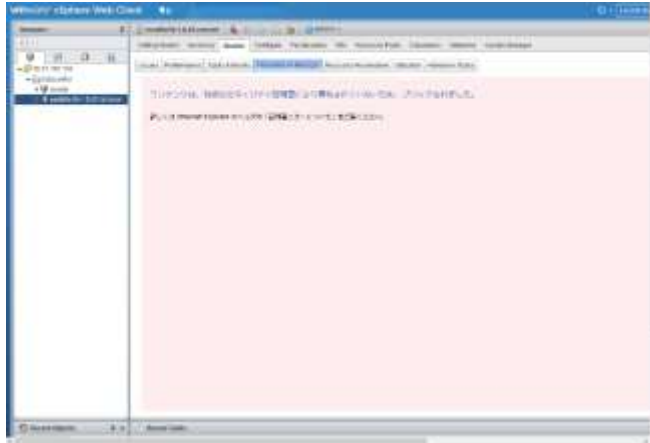
1. Start vSphere Web Client from your device.
2. Click [Hosts and Clusters]. Or, select <designated node> under [Datacenter].



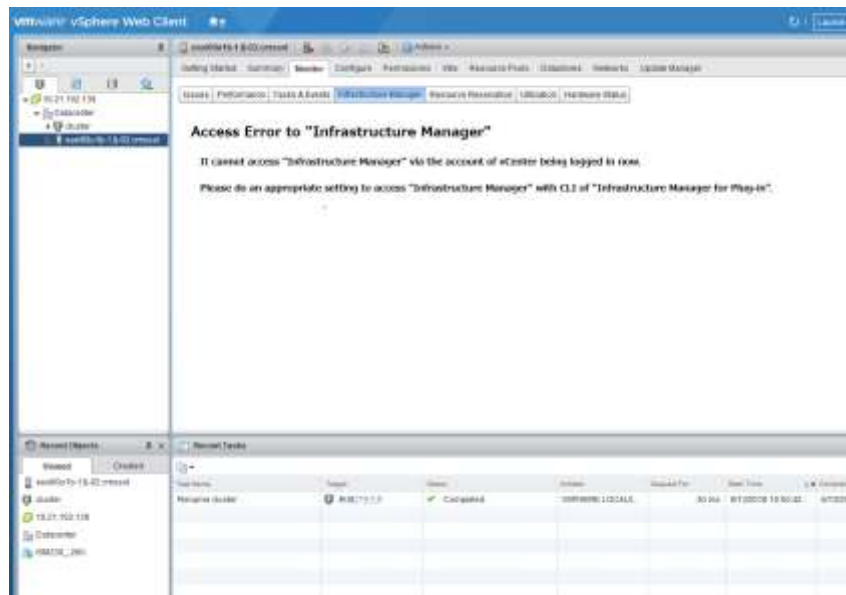
3. Click [Monitor] tab and select [Infrastructure Manager].

Note

If the SSL server certificate is not set on the browser correctly, the following error screen is displayed. Set the SSL server certificate correctly beforehand referring to [4.4 Import the SSL Server Certificate](#).

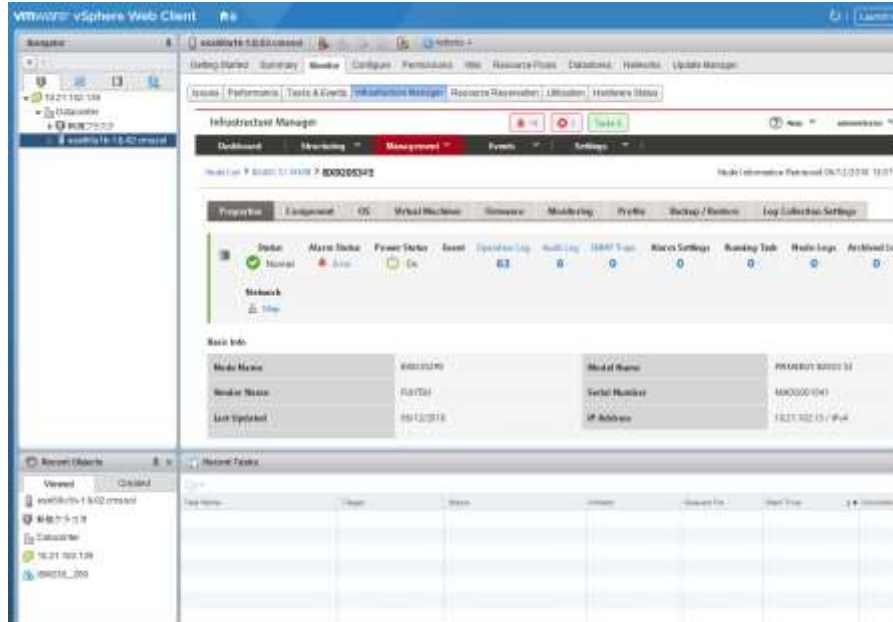


If the message below is displayed on "Infrastructure Manager" tab or nothing is displayed on the "Monitor" tab, the setting of ISM Plug-in may be wrong. Reconfigure referring to [4.3 Register the necessary information in ISM Plug-in](#).

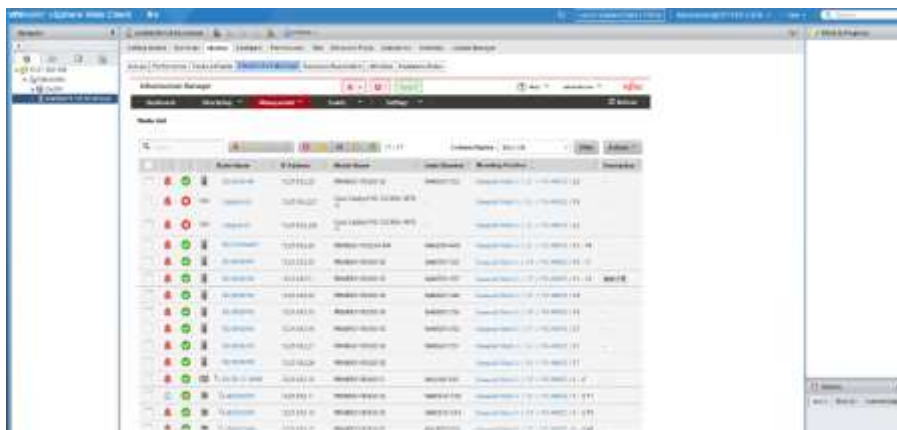


4. The ISM screen of the target host is displayed in the frame.

- For the registered node in ISM: Node Information

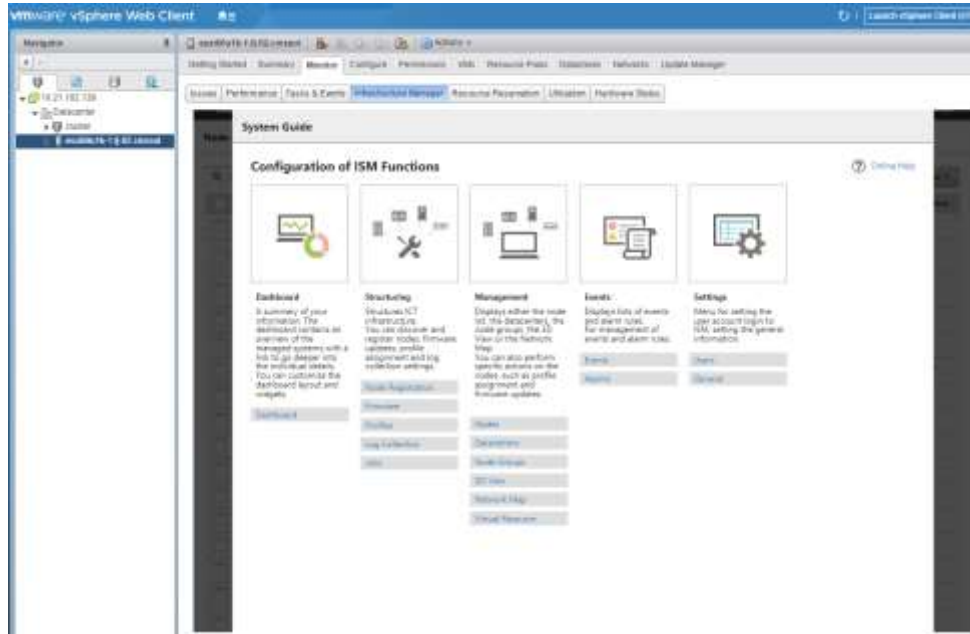


- For the unregistered node in ISM/ the datacenter or cluster: Node List



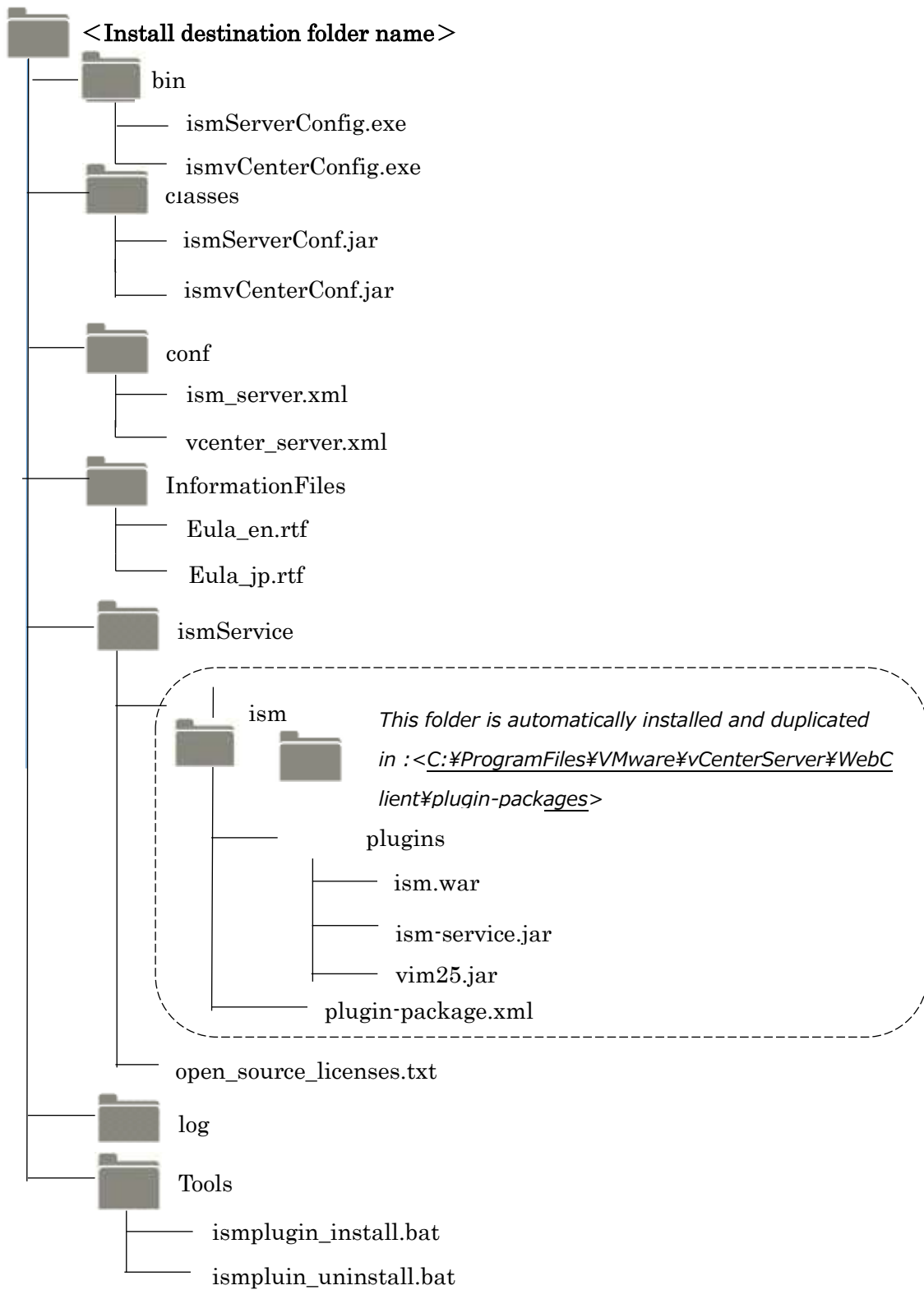
Point

If the ISM system guide dialog appears, scroll down to the bottom right and click [Close]. Change the settings from [Help]-[System Guide] in ISM.



5. Folder Structure after Installation

The following is the folder structure after installation.



6. How to utilize ISM

Please refer to the User's Manual of ISM for how to utilize each function of ISM.

7. Uninstallation Procedures

Go to the control panel and find "Infrastructure Manager Plug-in for VMware vCenter Server" from "Program and Features". Right click and select "Uninstall." Restart the OS where the ISM plug-in was deleted.

8. Precautions

- 8.1 NOTE: To use ISM Plug-in, purchase and installation of ISM is required. Without installing ISM, this plug-in does not work properly. Refer to the ISM User's Manual for more details.

- 8.2 NOTE: To use ISM Plug-in, purchase and installation of vCenter is required. Without installing vCenter, this plug-in does not work properly. Refer to the product guides of VMware for more details.

9. Latest Information

For the latest information about ISM and ISM Plug-in, please contact your local support.

<http://www.fujitsu.com/jp/products/software/infrastructure-software/infrastructure-software/ism/>