

FUJITSU Software
Infrastructure Manager Plug-in for Microsoft
System Center
Operations Manager 1.2



Setup Guide

For Windows Server 2012 R2

CA92344-2542-01

August 2018

Contents

Preface	3
Purpose.....	3
Index.....	3
Intended Readers	3
Notation in this guide	3
High Risk Activity	4
Trademarks.....	5
1. Product Summary	6
2. Contents	6
3. Software Requirements.....	6
4. Installation Procedures.....	7
4.0 Before installation	7
4.1 Execute the install file	7
4.2 Import Management Pack	11
4.3 Register the information in ISM Plug-in from command prompt.....	14
4.4 How to use the ISM Plug-in.....	16
5. How to utilize ISM	19
6. Uninstallation Procedures.....	19
7. Precautions	20
8. Latest Information	20

Preface

Purpose

This Setup Guide describes the installation procedure, precautions on usage and information for FUJITSU Software Infrastructure Manager Plug-in for Microsoft System Center Operations Manager 1.2 (hereafter referred to as “ISM Plug-in”).

Index

1. [Product Summary](#)
2. [Contents](#)
3. [Software Requirements](#)
4. [Installation Procedures](#)
5. [How to utilize ISM](#)
6. [Uninstallation Procedures](#)
7. [Precautions](#)
8. [Latest Information](#)

Intended Readers

This guide is designed for readers who have sufficient knowledge on hardware and software, such as system administrators, network administrators, facility administrators and related service providers.

Notation in this guide

Notation

Keyboard

Keystrokes with no printed characters are indicated by key icons, such as [Enter] or [F1]. For example, [Enter] means press key labeled [Enter].

Multiple lines

Thick multiple lines are ruled before the important information for each procedure as follows:

Point

Describes important information for each subject.

Attention

Describes the subjects where attention is necessary.

Variables: <xxx>

Represents variables can be replaced by numerical values or text strings in accordance with the environment.

Example: <IP address>

Abbreviations

In this guide, the following abbreviations may be used.

Product Name	Abbreviation
FUJITSU Software Infrastructure Manager	ISM
FUJITSU Software Infrastructure Manager Plug-in for Microsoft System Center Operations Manager	ISM Plug-in
Microsoft System Center Operations Manager	SCOM

Terms

For the major terms and abbreviations used in this manual, see "Infrastructure Manager V2.3 Glossary".

High Risk Activity

The Customer acknowledges and agrees that the Product is designed, developed and manufactured as contemplated for general use, including without limitation, general office use, personal use, household use, and ordinary industrial use, but is not designed, developed and manufactured as contemplated for use accompanying fatal risks or dangers that, unless extremely high safety is secured, could lead directly to death, personal injury, severe physical damage or other loss (hereinafter "High Safety Required Use"), including without limitation, nuclear reaction control in nuclear facility, aircraft flight control, air traffic control, mass transport control, medical life support system, missile launch control in weapon system. The Customer shall not use the Product without securing the sufficient safety required for the High Safety Required Use. In addition, Fujitsu (or other affiliate's name) shall not be liable against the Customer and/or any third party for any claims or damages arising in connection with the High

Safety Required Use of the Product.

Trademarks

Microsoft, Windows, System Center Operations Manager, or names of other Microsoft products are trademarks or registered trademarks of Microsoft Corporation in the United States and other countries.

All other company and product names are trademarks or registered trademarks of the respective companies.

All other products are owned by their respective companies.

Copyright

Copyright Fujitsu Limited 2018 All rights reserved.

This manual shall not be reproduced or copied without the permission of Fujitsu Limited.

1. Product Summary

This plug-in software is designed to extend the user interface of Microsoft System Center Operations Manager (hereafter referred to as "SCOM") to enable the use of the functions of FUJITSU Infrastructure Manager (hereafter referred to as "ISM") from the SCOM console to enhance the efficiency of the infrastructure management. This plug-in software enables you to operate ISM directly from the SCOM console.

2. Contents

This plug-in software is composed of the following five (5) files:

- ISMSCOM_INSTALL.exe
- Readme.txt
- Readme_en.txt
- Setup Guide (Japanese)
- Setup Guide (*this document)

3. Software Requirements

Applications that must be installed:

- FUJITSU Software Infrastructure Manager V2.0 or later
- Microsoft System Center Operations Manager 2012R2

Minimum Browser Version Requirements:

- Microsoft Internet Explorer 11 or later
- * For the 3D view functions of ISM you must install the latest version: 11.0.19 or later
- Mozilla Firefox 38 or later
- Google Chrome 43 or later

Please refer to the User's Manual of ISM for more information.

4. Installation Procedures

This section explains installation procedures of IMS Plug-in into SCOM.

Please proceed the four (4) steps as follows:

- 4.0 [Before installation](#)
 - 4.1 [Execute the installation file](#)
 - 4.2 [Import management pack](#)
 - 4.3 [Register the information in ISM Plug-in from command prompt](#)
 - 4.4 [How to use the ISM Plug-in](#)
-

4.0 Before installation

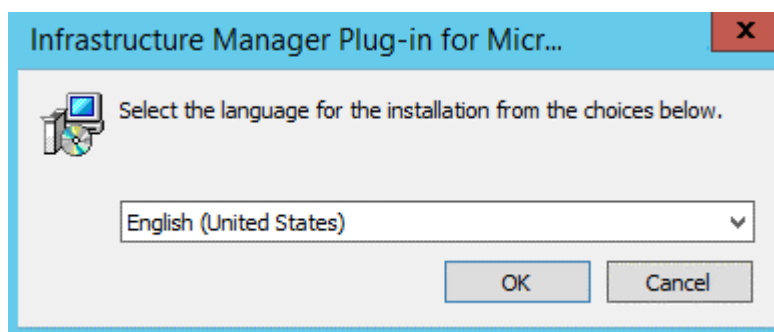
Point

- The version of OpenSSL in System Center Server must be compatible with OpenSSL in ISM. Without compatibility, it does not work properly. Kindly check the version of System Center Server before installation. The versions of Open SSL must be version 1.0.x. Ex.) 1.0.1a, 1.0.2.a.... etc.
 - Uninstall the ISM Plug-in (version 1.1) in advance if it is already applied in ISM.
-
-

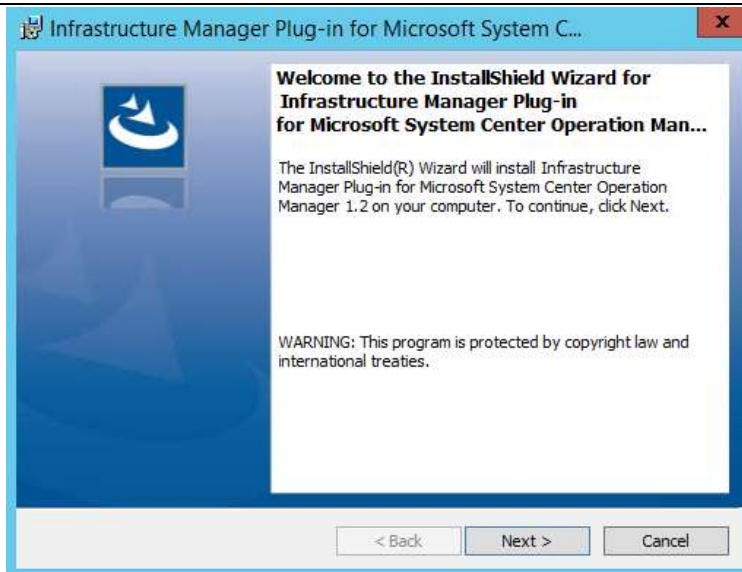
4.1 Execute the install file

4.1.1 Double click [ISMSCOM_INSTALL.exe] and open the file.

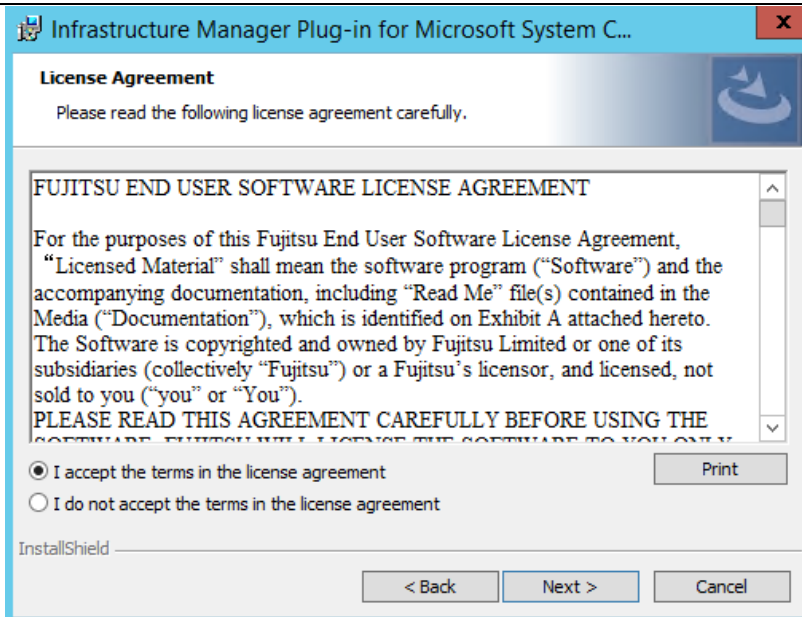
4.1.2 Select language for the installation procedures.



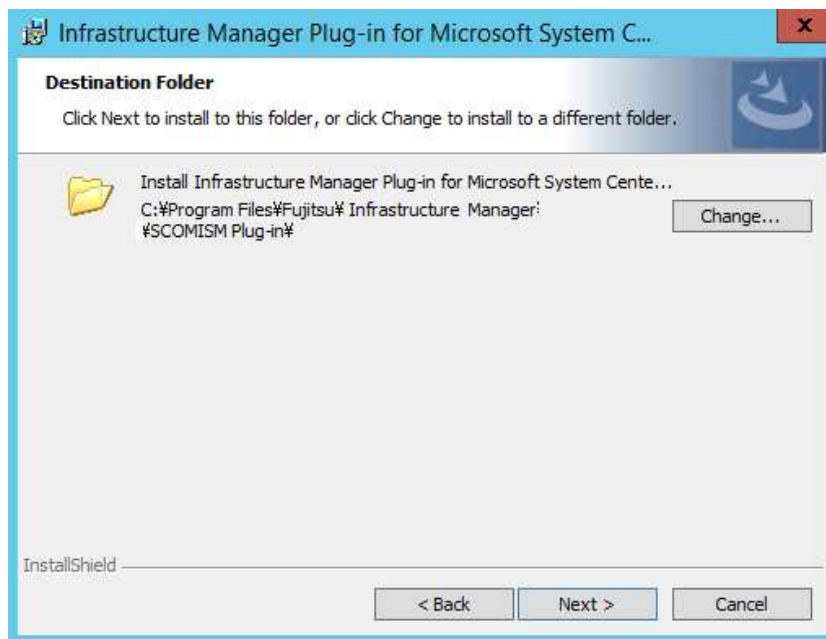
4.1.3 When the preparations are completed, the installation wizard is displayed. Click [Next].



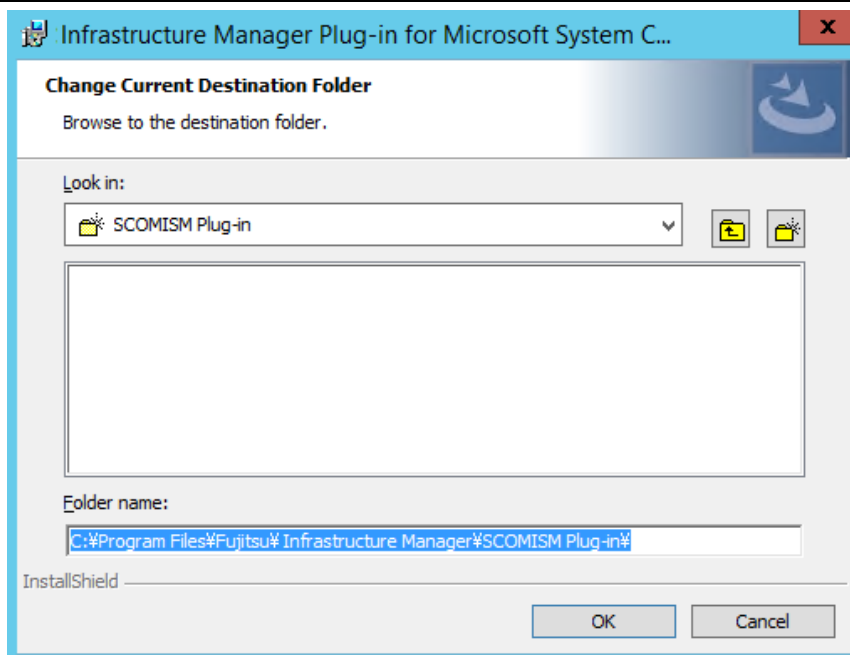
4.1.4 The EULA is displayed. Read the contents and select [I accept the terms].



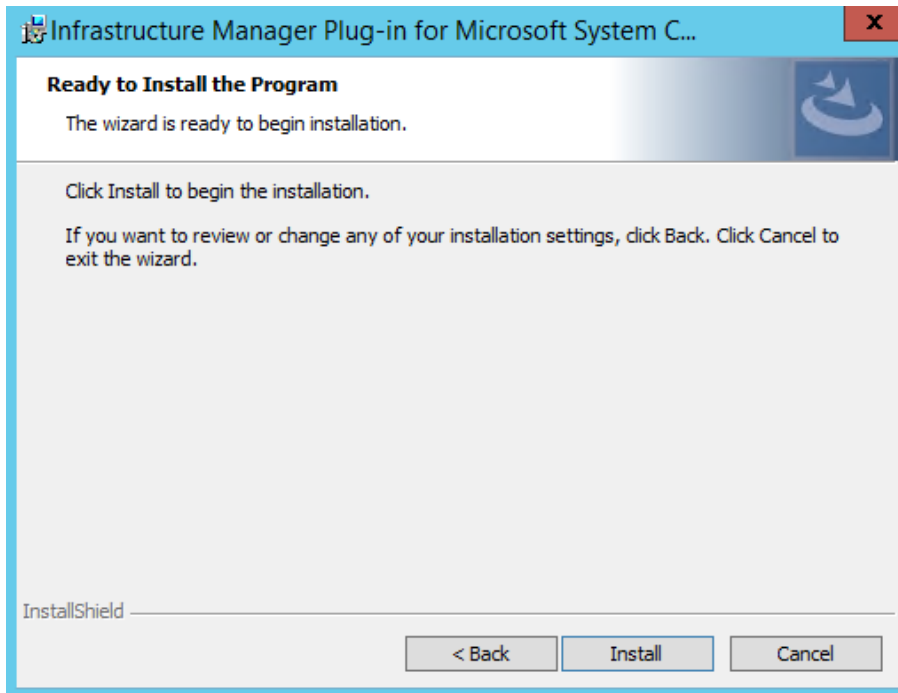
4.1.5 Specify the installation destination. To change the destination, click [Change].



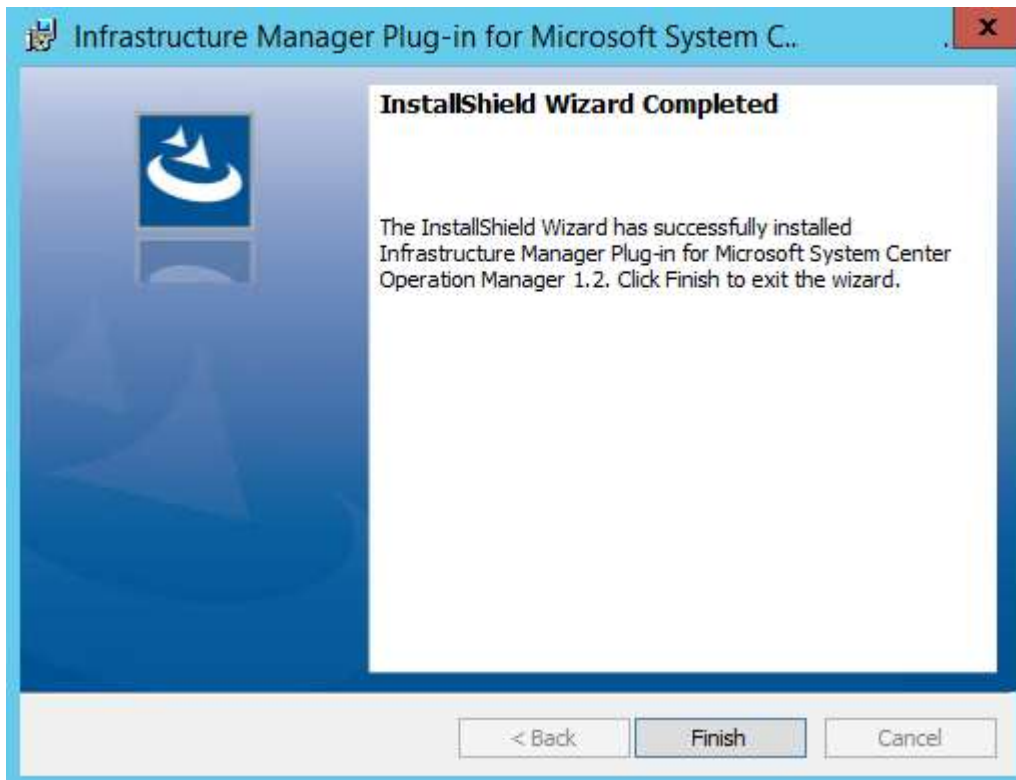
4.1.6 Specify the designated folder and click [OK].



4.1.7 Click [Install] and the installation starts automatically.



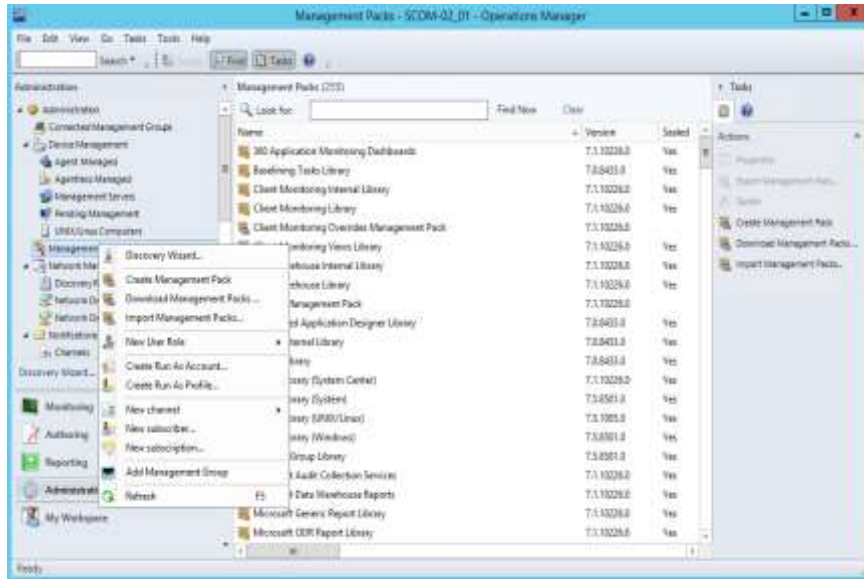
4.1.8 After the installation is completed, the message below is displayed. Click [Finish].



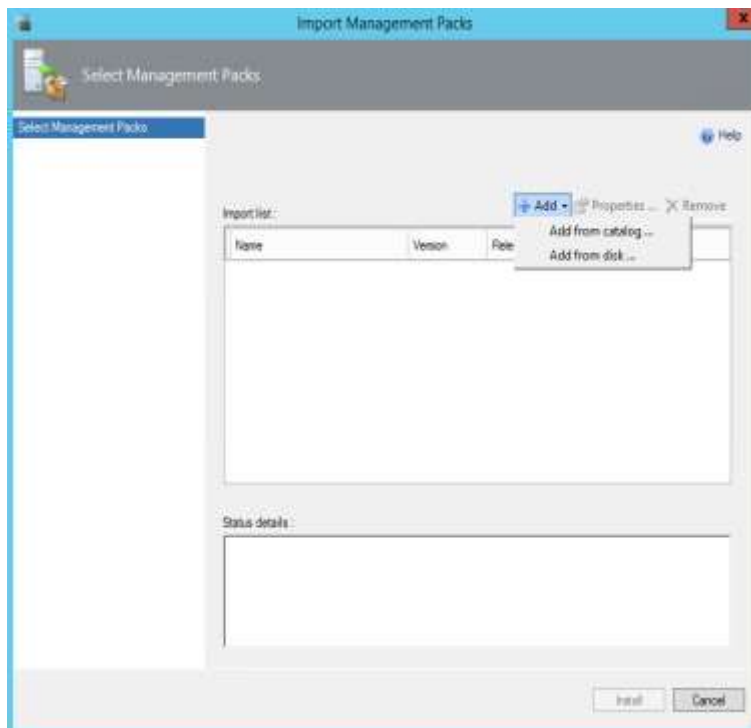
4.2 Import Management Pack

4.2.1 Launch the SCOM console.

4.2.2 On the left pane, click [Administration], right click [Management Packs] and select [Import Management Packs].

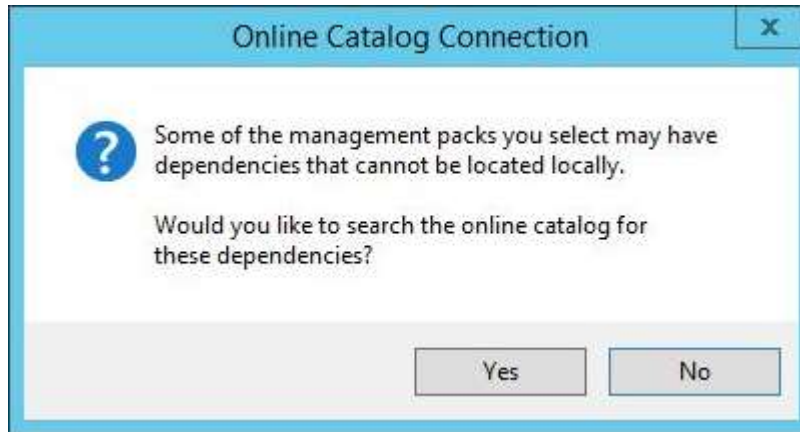


4.2.3 Click [Add from disk] under [Add]

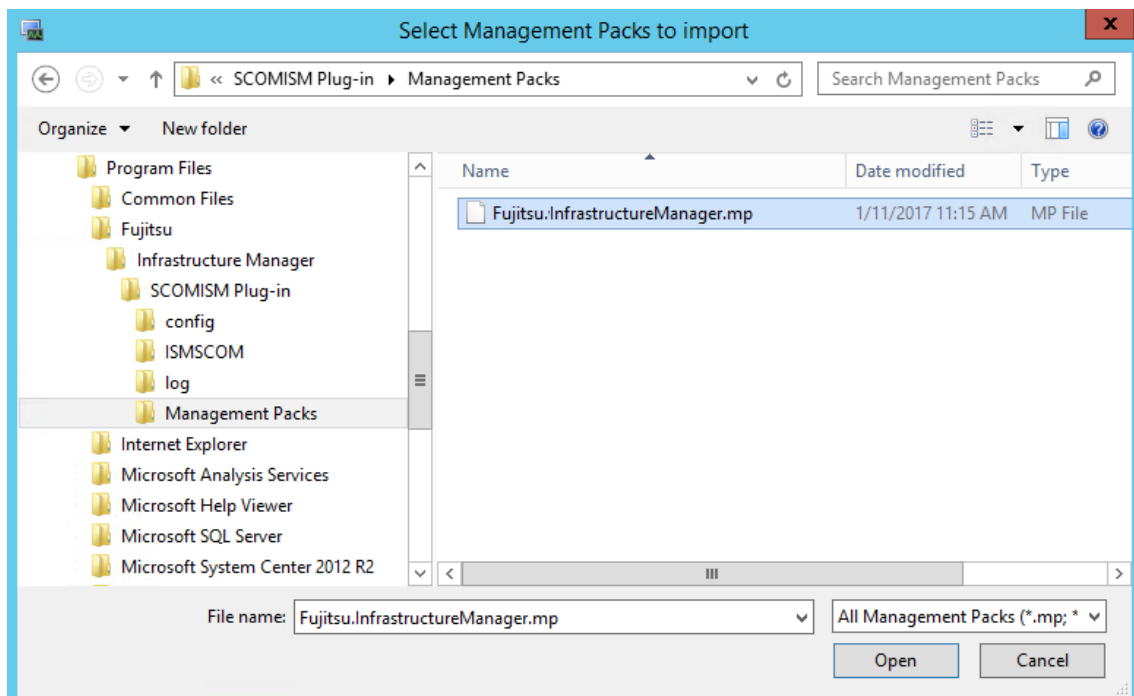


Point

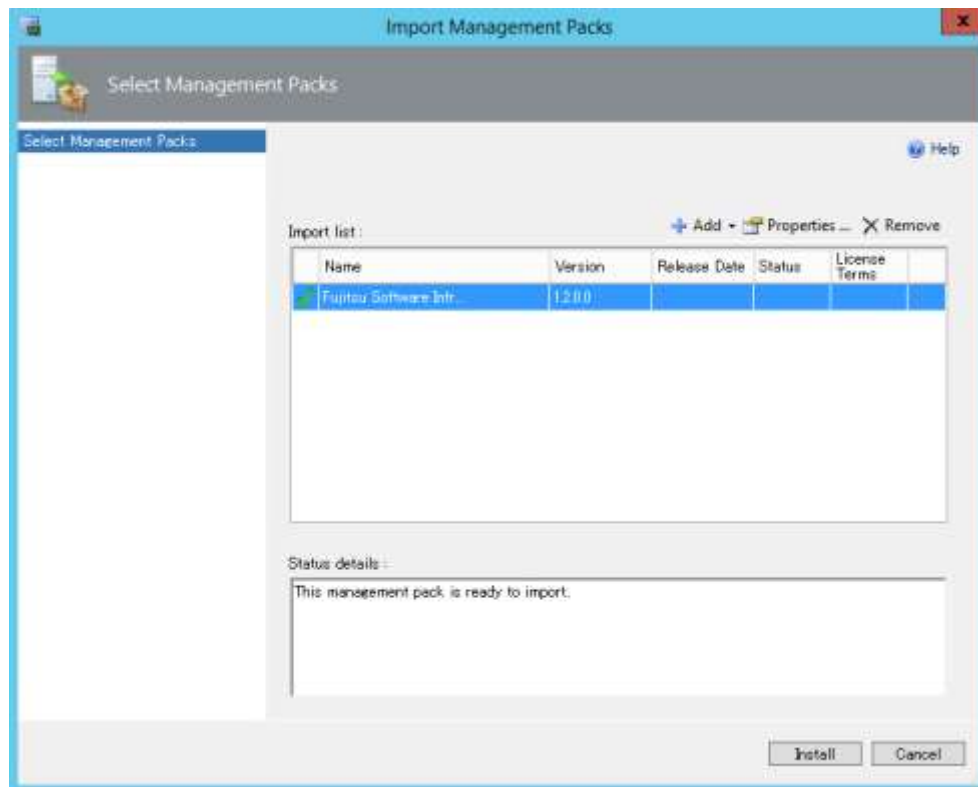
If the online catalog message appears, click [No].



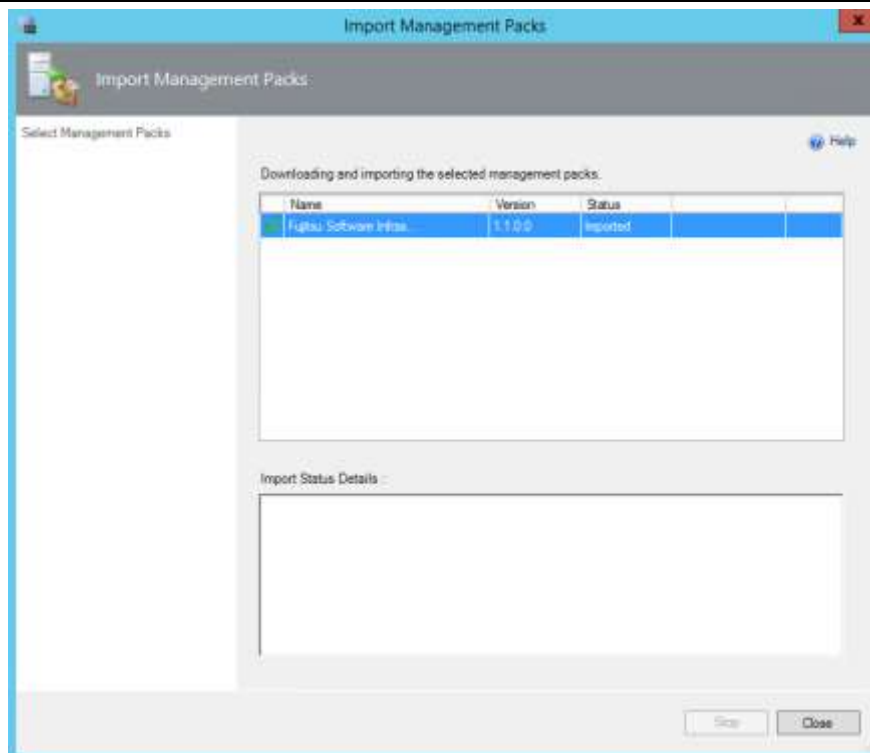
4.2.4 In the install destination folder, select “ Fujitsu.InfrastructureManager.mp” from [Management Packs] and click [Open].



4.2.5 Click [Install].

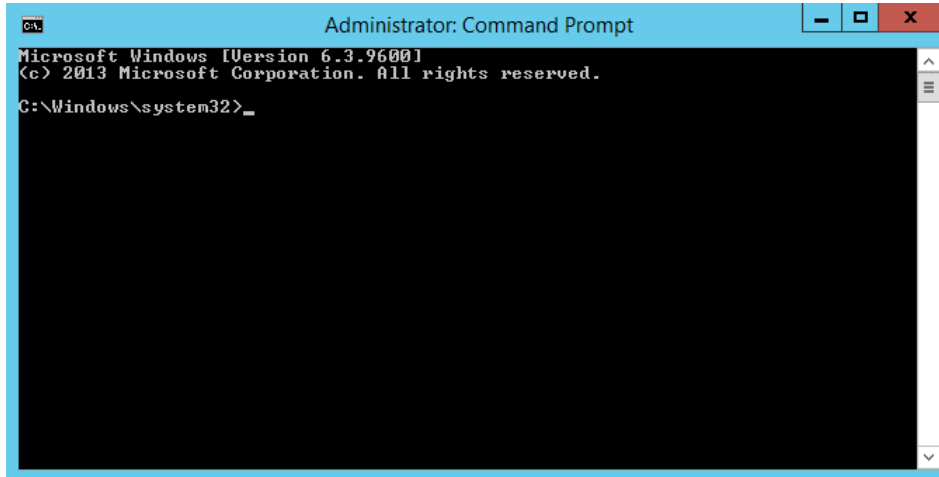


4.2.6 After installation is completed, click [Close] to close the window.



4.3 Register the information in ISM Plug-in from command prompt

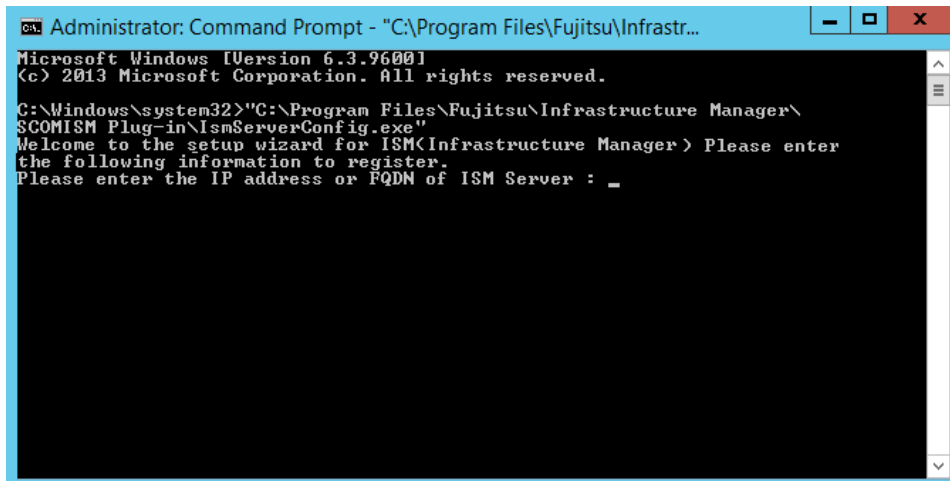
4.3.1 Right click the Start menu and select [Command Prompt (Admin)].



4.3.2 Execute the following command.

<Install destination folder name> ¥IsmServerConfig.exe

Example:



4.3.3 Follow the directions and enter the information below.

Example:

```
Welcome to the setup wizard for ISM(Infrastructure Manager) Please enter the
following information to register.
Please enter the IP address or FQDN of ISM Server : <IP address or FQDN of ISM
Server>
Please enter the port number of ISM Server : <port number of ISM Server>
Please enter the user name of ISM Server : <user name of ISM Server>
Please enter the password for the user name : <password of ISM Server>
Please enter the user name of SCOM : <user name of SCOM>
Please enter the Alert collection interval (3-525600 or 00:00-23:59) : <number
>
Please enter the Alert deletion interval (3-525600 or 00:00-23:59) : <number>
[INFO] Configuration file was updated successfully.
Do you want to continue? [y/n] : n

C:\Windows\system32>
```

4.3.4 Enter the “exit” command to close the window.

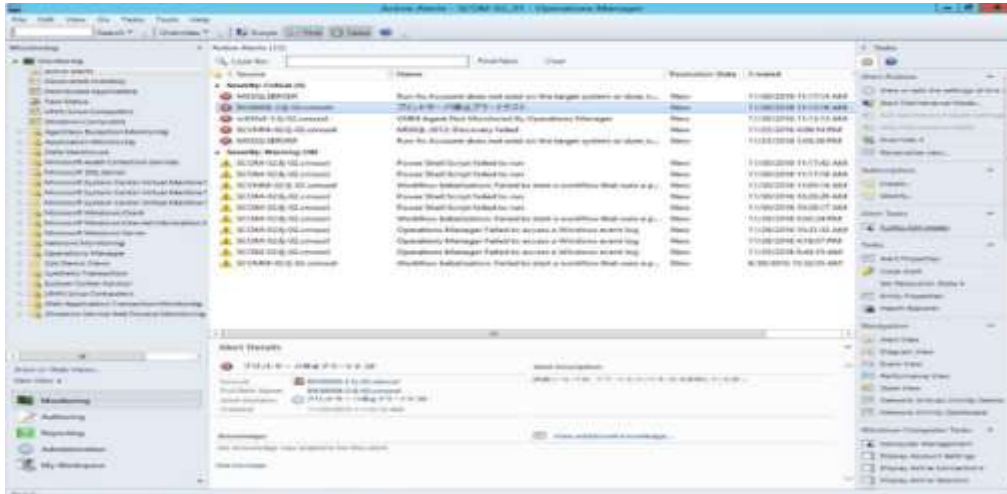
Point

- To replace the server information, just execute the above-mentioned procedures (4.3.1, 4.3.2 and 4.3.3) again.
 - Do not move to any pages during reading the new server information. It may cause an error.
-
-

4.4 How to use the ISM Plug-in

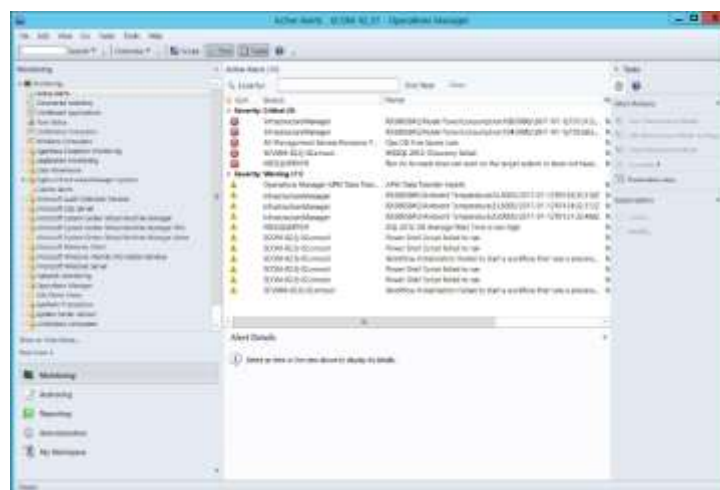
4.4.1 Launch the SCOM console.

4.4.2 Select [Active Alert] in the left pane and select the designated host in the middle pane. [Alert task] appears in the right pane.



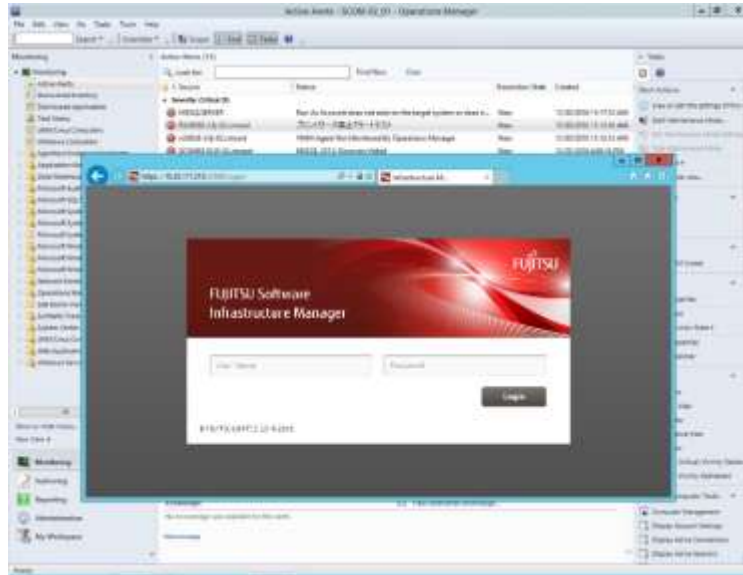
Point

- For the alerts detected via ISM, [InfrastructureManager] is displayed as a Source.
- Described time stamp as a Name is using UTC time. (Not JST)
- To show the alerts, need to specify the monitoring items and each threshold values in advance in ISM.



For setting up the monitoring items and each threshold values, please refer to User's Manual of ISM 「2.3.1 Setting of Monitoring Items and Threshold Value」.

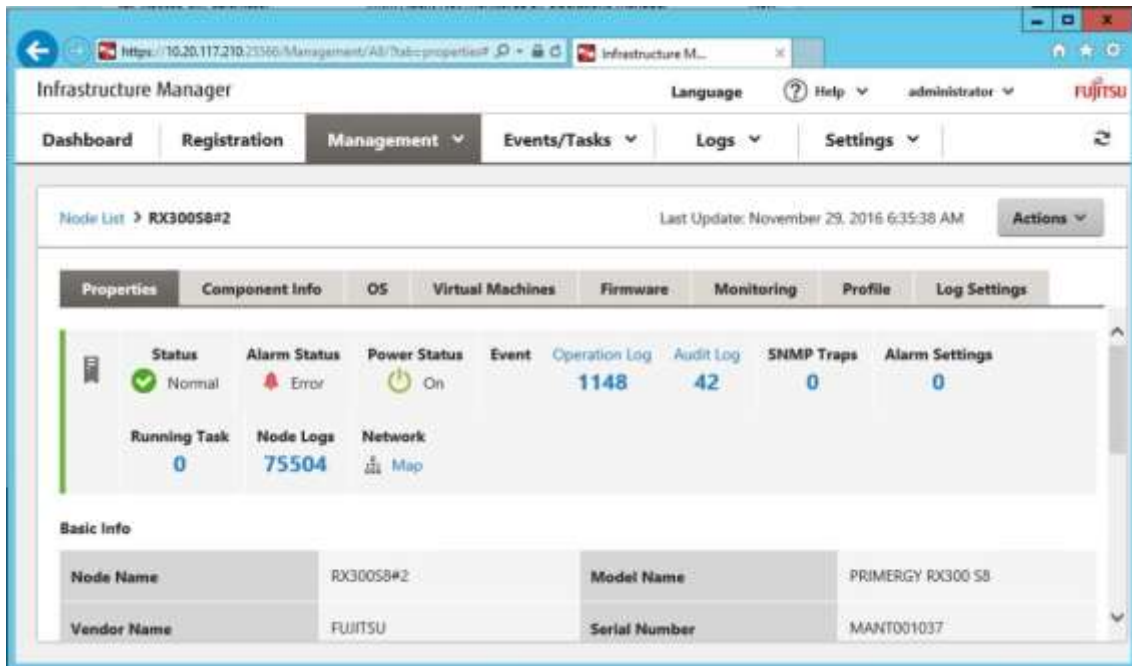
4.4.3 Click [Fujitsu ISM (node)] under [Alert Task]. The ISM Login console appears.



Point

If the selected alert is not registered in ISM as a node, an error message is displayed.

4.4.4 After logging in, the designated node information appears.



Point

If the system guide dialog appears, scroll down to the bottom right and click [Close]. Change the settings from [Help]-[System Guide] on ISM.

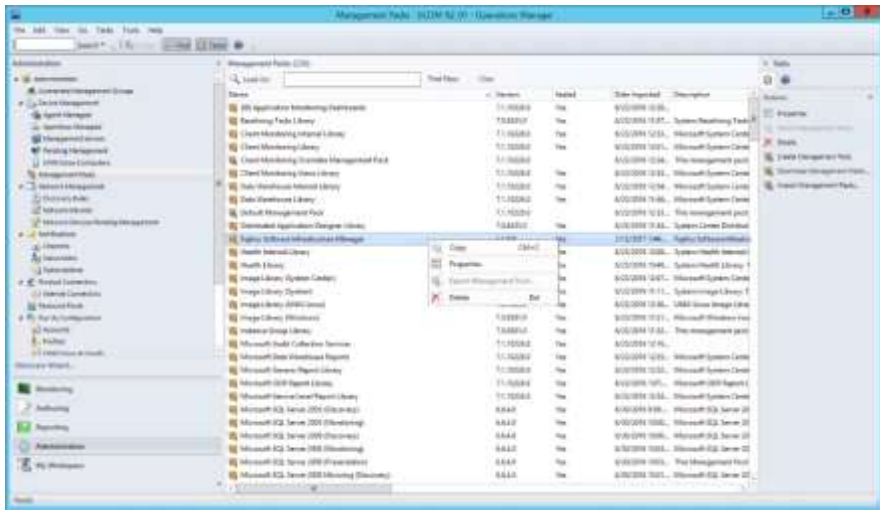
5. How to utilize ISM

Please refer to the User's Manual of ISM for how to utilize each function of ISM.

6. Uninstallation Procedures

6.1 Delete Management Packs.

Login to SCOM. Click [Management Packs] under [Administration]. Right click [Fujitsu Software Infrastructure Manager] and select [Delete].



6.2 Uninstall the Plug-in.

Go to the control panel and find "Infrastructure Manager Plug-in for Microsoft System Center Operations Manager" from "Program and functions". Right click and select "Uninstall."

7. Precautions

7.1 NOTE: To use Infrastructure Manager Plug-in for SCOM, purchase and installation of ISM is required. Without installing ISM, this plug-in does not work properly. Please refer to the ISM User's Manual for more details.

7.2 NOTE: To use Infrastructure Manager Plug-in for SCOM, purchase and installation of SCOM is required. Without installing SCOM, this plug-in does not work properly. Please refer to the Microsoft product guides for more details.

8. Latest Information

For the latest information about ISM and ISM Plug-in, please contact your local support.