

**FUJITSU Software**  
**Infrastructure Manager Plug-in for Microsoft**  
**System Center**  
**Virtual Machine Manager 1.2**



## **Setup Guide**

**For Windows Server 2016 / 2019**

**CA92344-2548-02**

**October 2018**

# Contents

Preface .....	3
Purpose.....	3
Index.....	3
Intended Readers .....	3
Notation in this guide .....	3
High Risk Activity .....	4
Trademarks.....	5
1. Product Summary .....	6
2. Contents .....	6
3. Software Requirements.....	6
4. Installation Procedures.....	7
4.0 Before installation .....	7
4.1 Execute the installation file.....	7
4.2 Import console add-in .....	11
4.3 Register the information in ISM Plug-in from command prompt.....	14
4.4 Use of the ISM Plug-in .....	16
5. How to utilize ISM .....	19
6. Uninstallation Procedures .....	19
7. Precautions.....	20
8. Latest Information.....	20

## Preface

---

### Purpose

This Setup Guide describes the installation procedures, precautions on usage and information for FUJITSU Software Infrastructure Manager Plug-in for Microsoft System Center Virtual Machine Manager 1.2 (hereafter referred to as “ISM Plug-in”.)

### Index

1. [Product Summary](#)
2. [Contents](#)
3. [Software Requirements](#)
4. [Installation Procedures](#)
5. [How to utilize ISM](#)
6. [Uninstallation Procedures](#)
7. [Precautions](#)
8. [Latest Information](#)

### Intended Readers

This guide is designed for readers who have sufficient knowledge on hardware and software, such as system administrators, network administrators, facility administrators and related service providers.

### Notation in this guide

#### Notation

##### Keyboard

Keystrokes with no printed characters are displayed by key icons, such as [Enter] or [F1]. For example, [Enter] means press key labeled [Enter.]

##### Multiple lines

Thick multiple lines are ruled before the important information for each procedure as follows:

##### Point

---

---

Describes important information for each subject.

##### Note

---

---

Describes subject where attention is necessary.

Variables: <xxx>

Represents variables can be replaced by numerical values or text strings in accordance with the environment.

Example: <IP address>

### Abbreviations

In this guide, the following abbreviations may be used.

Product Name	Abbreviation
FUJITSU Software Infrastructure Manager	ISM
FUJITSU Software Infrastructure Manager Plug-in for Microsoft System Center Virtual Machine Manager	ISM Plug-in
Microsoft System Center Virtual Machine Manager	SCVMM

### Terms

For the major terms and abbreviations used in this manual, see "Infrastructure Manager V2.3 Glossary".

### **High Risk Activity**

The Customer acknowledges and agrees that the Product is designed, developed and manufactured as contemplated for general use, including without limitation, general office use, personal use, household use, and ordinary industrial use, but is not designed, developed and manufactured as contemplated for use accompanying fatal risks or dangers that, unless extremely high safety is secured, could lead directly to death, personal injury, severe physical damage or other loss (hereinafter "High Safety Required Use"), including without limitation, nuclear reaction control in nuclear facility, aircraft flight control, air traffic control, mass transport control, medical life support system, missile launch control in weapon system. The Customer, shall not use the Product without securing the sufficient safety required for the High Safety Required Use. In addition, Fujitsu (or other affiliate's name) shall not be liable against the Customer and/or any third party for any claims or damages arising in connection with the High Safety Required Use of the Product.

**Trademarks**

Microsoft, Windows, System Center Virtual Machine Manager, or names of other Microsoft products are trademarks or registered trademarks of Microsoft Corporation in the United States and other countries.

All other company and product names are trademarks or registered trademarks of the respective companies.

All other products are owned by their respective companies.

**Copyright**

Copyright Fujitsu Limited 2018 All rights reserved.

This manual shall not be reproduced or copied without the permission of Fujitsu Limited.

## 1. Product Summary

---

This plug-in software is designed to extend the user interface of Microsoft System Center Virtual Machine Manager (hereafter referred to as "SCVMM") to enable the use the functions of FUJITSU Software Infrastructure Manager (hereafter referred to as "ISM") from SCVMM console to integrate the infrastructure management. This plug-in software enables you to operate ISM directly from SCVMM console.

## 2. Contents

---

This plug-in software is composed of the following five (5) files:

- ISMSCVMM\_INSTALL.exe
- Readme.txt
- Readme\_en.txt
- Setup Guide (Japanese)
- Setup Guide (\*this document)

## 3. Software Requirements

---

Applications that must be installed:

- FUJITSU Software Infrastructure Manager V2.3
  - Microsoft System Center Virtual Machine Manager 2012 R2 or 2016

Minimum Browser Version:

- Microsoft Internet Explorer 11 or later
  - \* For the 3D view functions of ISM you must install the latest version: 11.0.19 or later
- Mozilla Firefox 38 or later
- Google Chrome 43 or later

Please refer to the User's Manual of ISM for more information.

## 4. Installation Procedures

---

This section explains installation procedure of ISM Plug-in into SCVMM.

Please execute the four (5) steps as follows:

- 4.0 [Before installation](#)
  - 4.1 [Execute the installation file](#)
  - 4.2 [Import console add-in](#)
  - 4.3 [Register the information in ISM Plug-in from command prompt](#)
  - 4.4 [Use of the ISM Plug-in](#)
- 

### 4.0 Before installation

#### Point

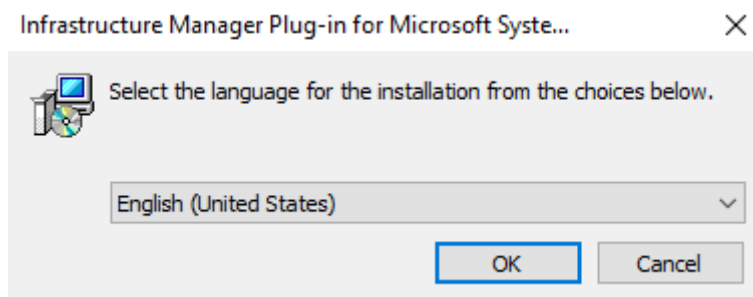
---

- The version of OpenSSL in System Center Server must be compatible with OpenSSL in ISM. Without compatibility, it does not work properly. Kindly check the version of System Center Server before the installation. The versions of Open SLL must be version 1.0.x.  
Ex.) 1.0.1a,1.0.2a....etc
  - Uninstall the ISM Plug-in (version 1.1) in advance if it is already applied in ISM.
- 

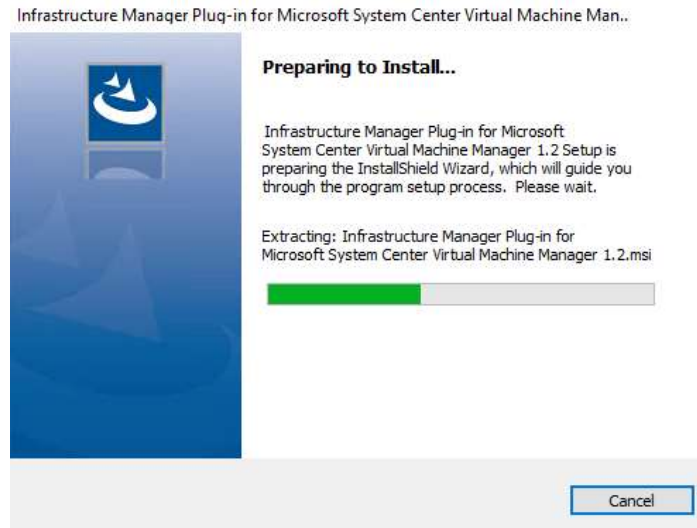
### 4.1 Execute the installation file

4.1.1 Double click [ISMSCVMM\_INSTALL.exe] and open the file.

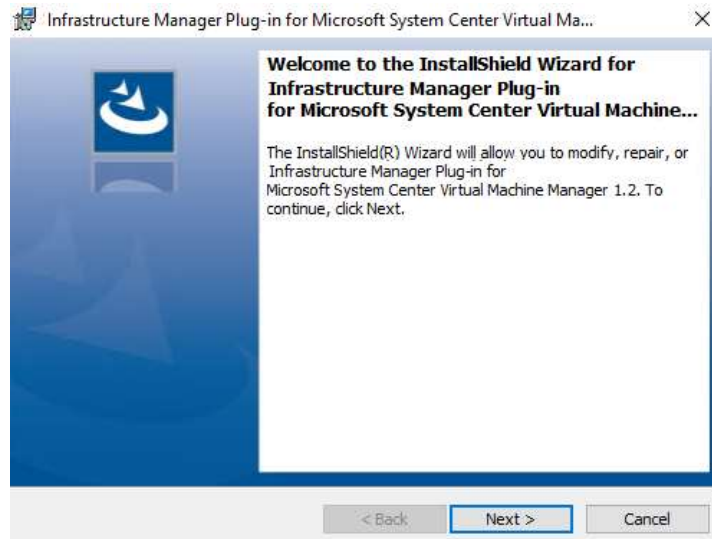
4.1.2 Select language for the installation procedures.



4.4.3 The installer starts the preparations.

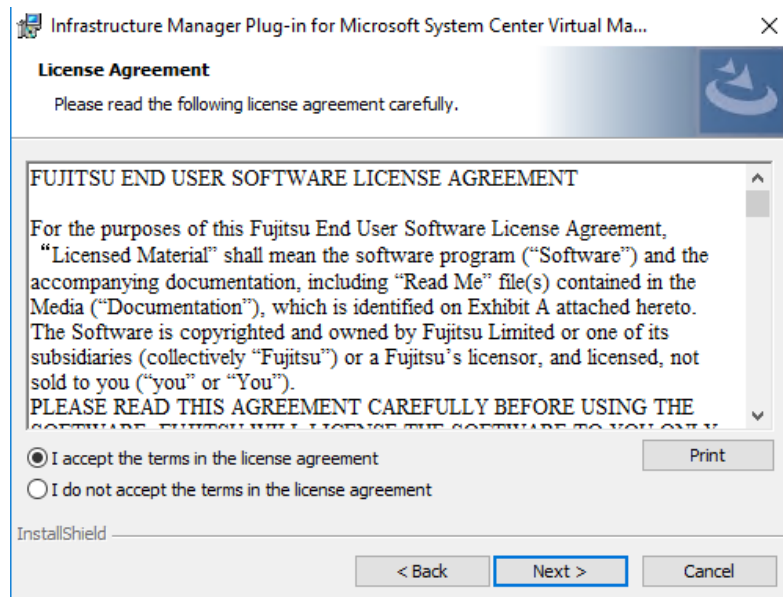


4.4.4 After the preparations are completed, the installation wizard is displayed. Click [Next].

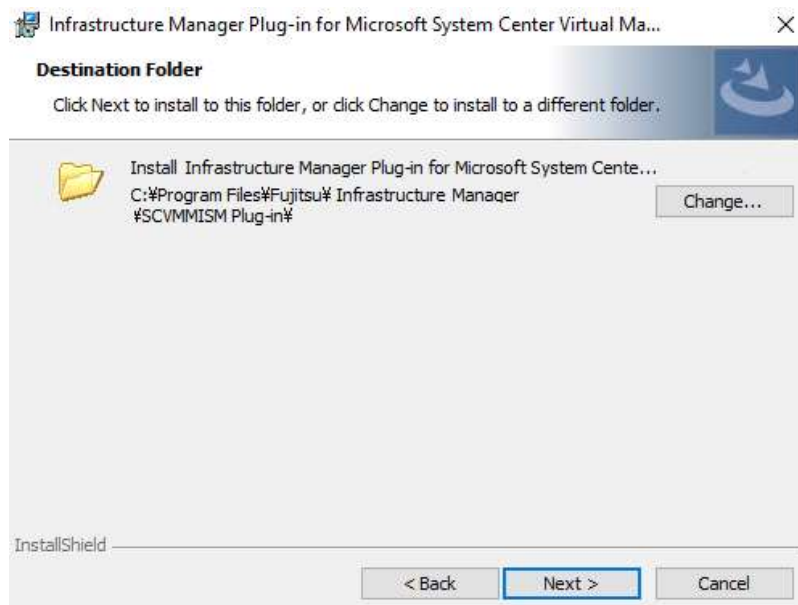




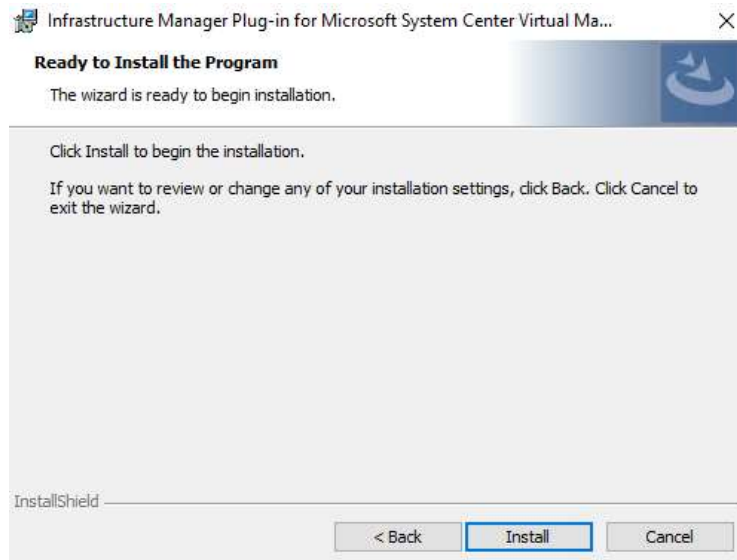
4.4.5 The EULA is displayed. Read the contents and select [I accept the terms].



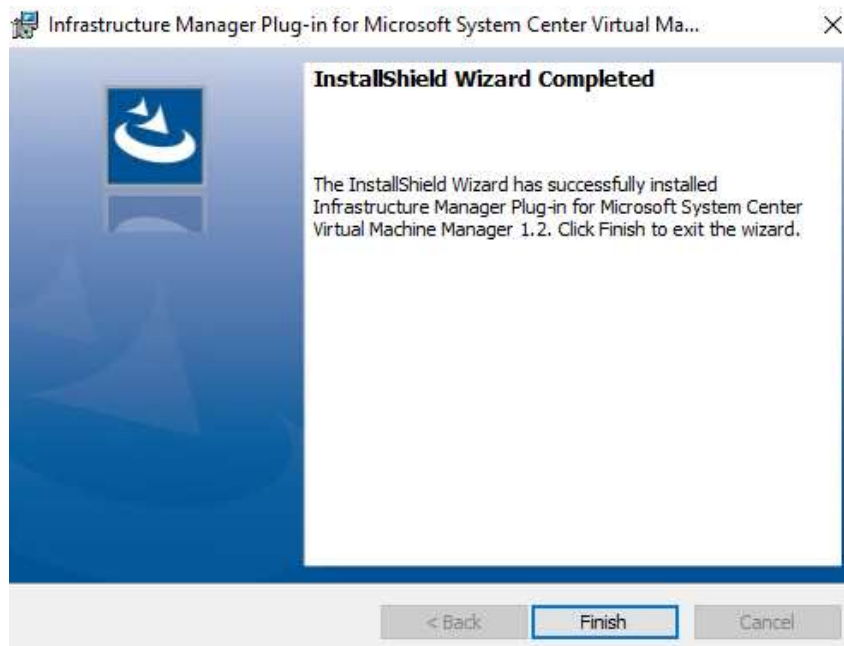
4.4.6 Specify the installation destination. To change the destination, click [Change].



4.4.7 Click [Install] and the installation starts automatically.



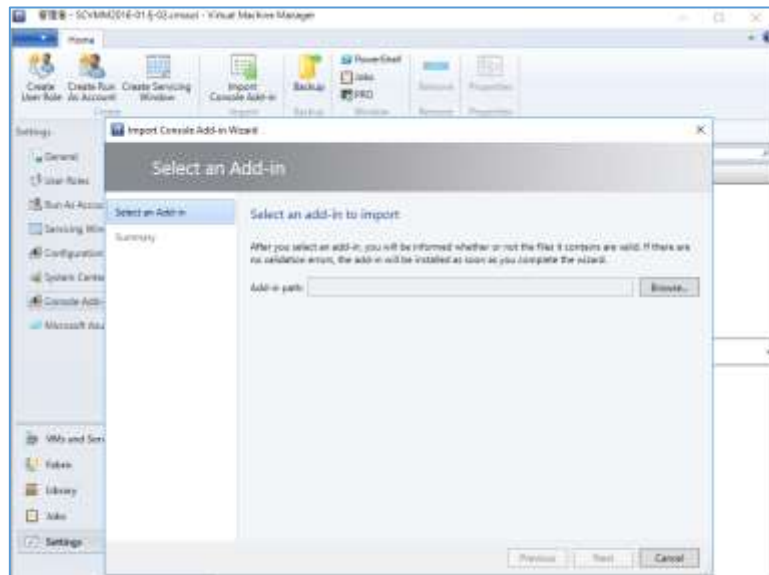
4.4.8 After the installation is completed, the dialog below is displayed. Click [Finish]



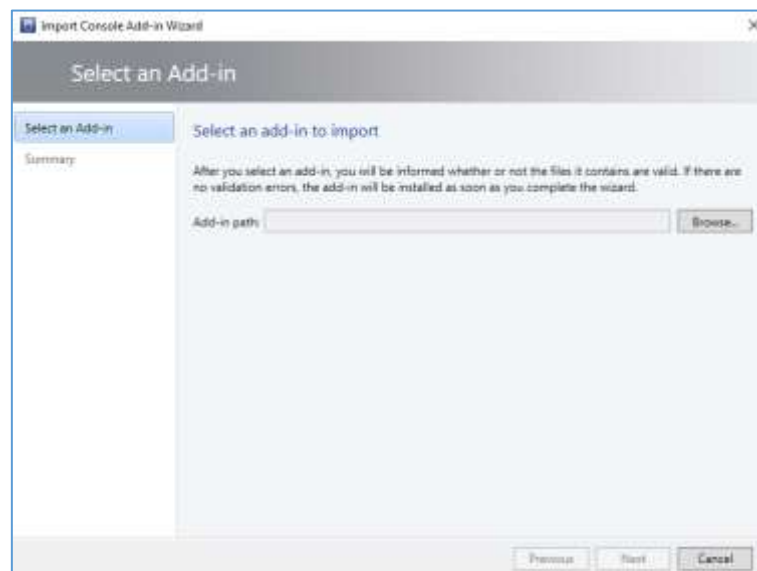
## 4.2 Import console add-in

### 4.2.1 Log in to SCVMM.

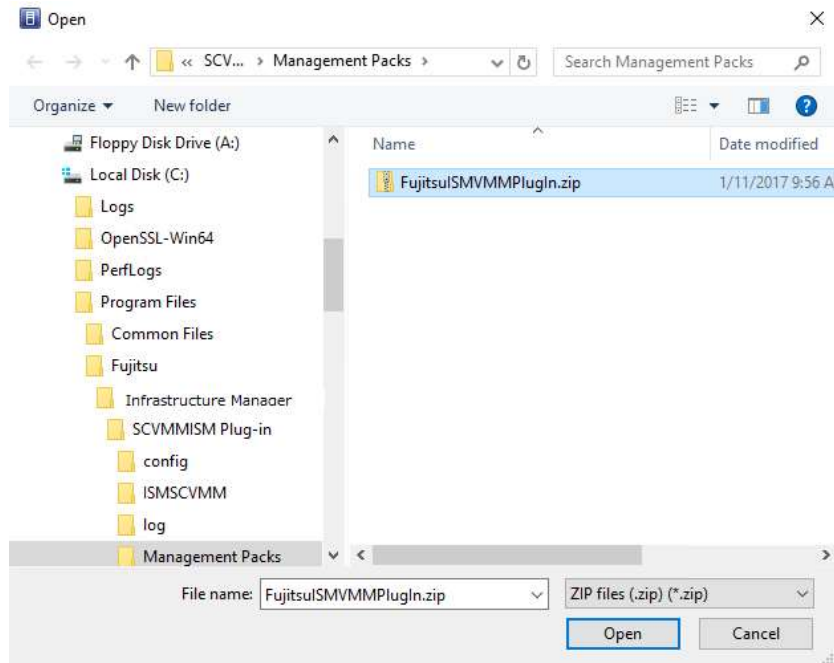
On the left pane, under [Settings], click [Import Console Add-in] tab.



### 4.2.2 To enter the path of the add-in, click [Browse].



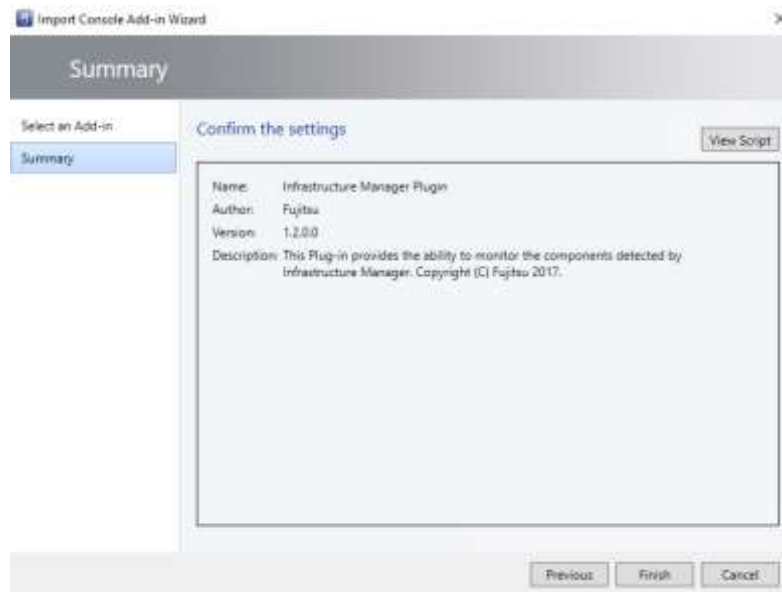
4.2.3 In the installation destination folder, select [FujitsuISMVMMPlugin.zip] from [Management Packs], and click [Open.]



4.2.4 Check [Continue installing this add-in anyway] and click [Next.]

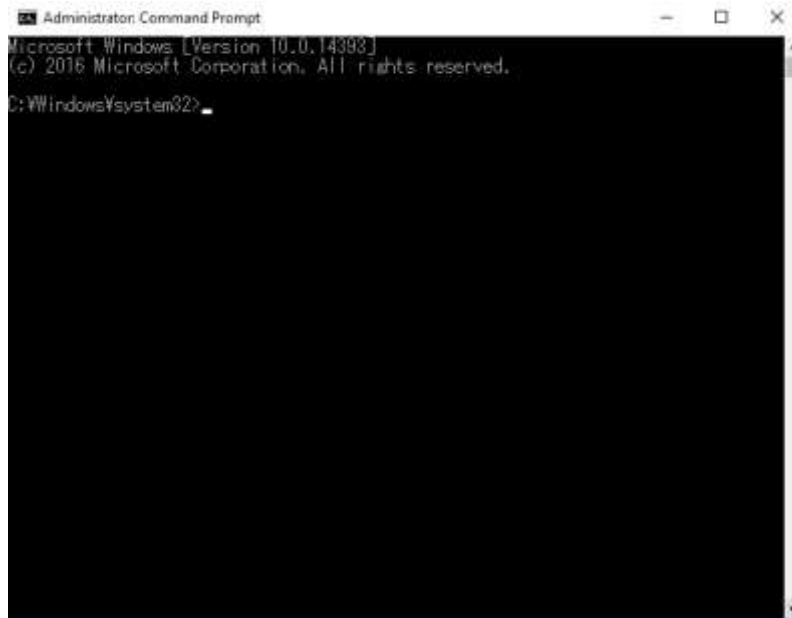


#### 4.2.5 Click [Finish.]



### 4.3 Register the information in ISM Plug-in from command prompt

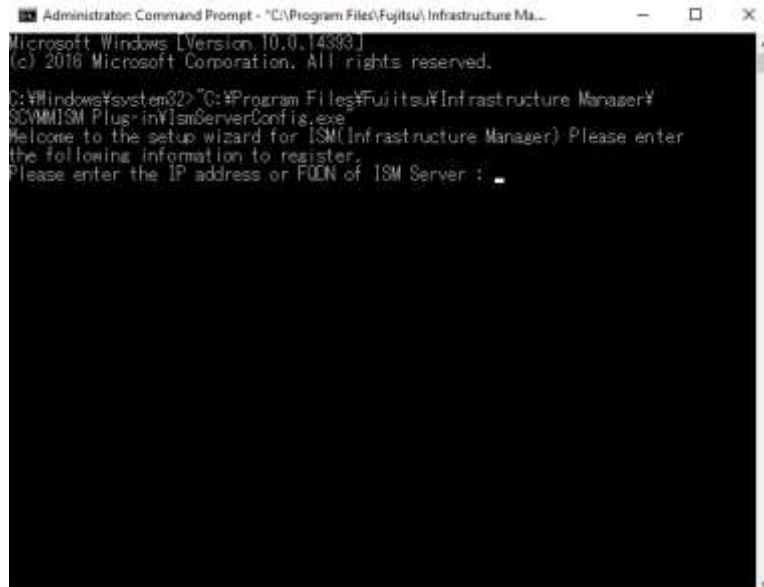
#### 4.3.1 Right click [Start menu] and click [Command Prompt (Admin)]



#### 4.3.2 Execute the following command.

**< install destination folder name>\IsmServerConfig.exe**

Example:



#### 4.3.3 Follow the directions and enter the information below.

Example:

```
Please enter the IP address or FQDN of ISM Server: <IP address or FQDN of ISM
Server>
Please enter the port number of ISM Server: <port number of ISM Server>
Please enter the user name of ISM Server: <user name of ISM Server>
Please enter the password for the user name: <password of ISM Server>
Please enter the user name of SCVMM: <user name of SCVMM>
[INFO] Configuration file was updated successfully.
Do you want to continue? [y/n] : n [Enter n for close]
```

#### 4.3.4 Enter the “exit“ command and close the window.

#### Point

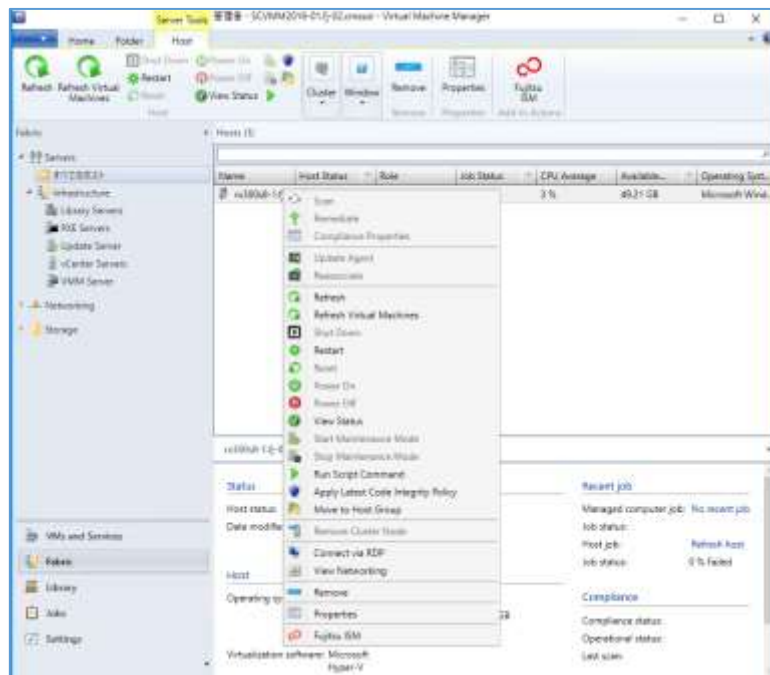
---

- To correct or replace the server information, just execute the above-mentioned procedures (4.3.1, 4.3.2 and 4.3.3.) again.
  - Do not move to any pages during reading the new server information. It may cause error.
- 
-

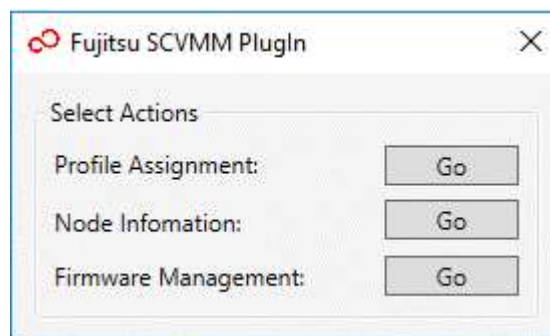
#### 4.4 Use of the ISM Plug-in

4.4.1 Launch the SCVMM console.

4.4.2 Select [All hosts] in the left pane and right click the host name in the middle pane. Then select [Fujitsu ISM]. Alternatively click the [Fujitsu ISM] tab in the upper right.

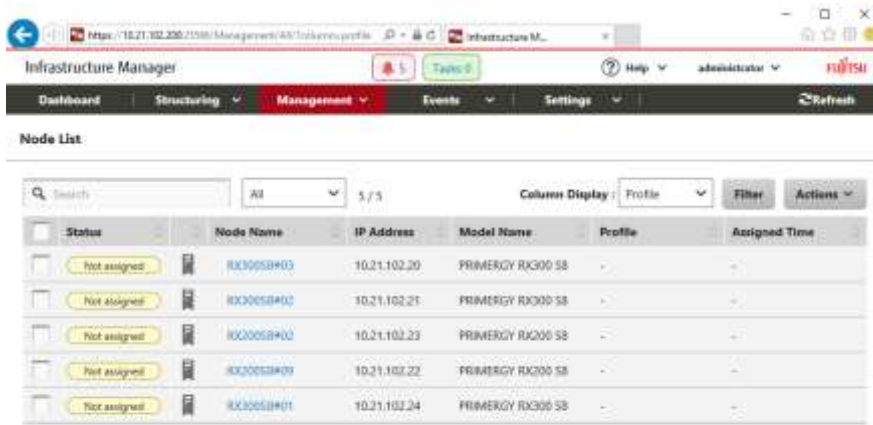


4.4.3 The [Fujitsu SCVMM PlugIn] dialog is displayed.

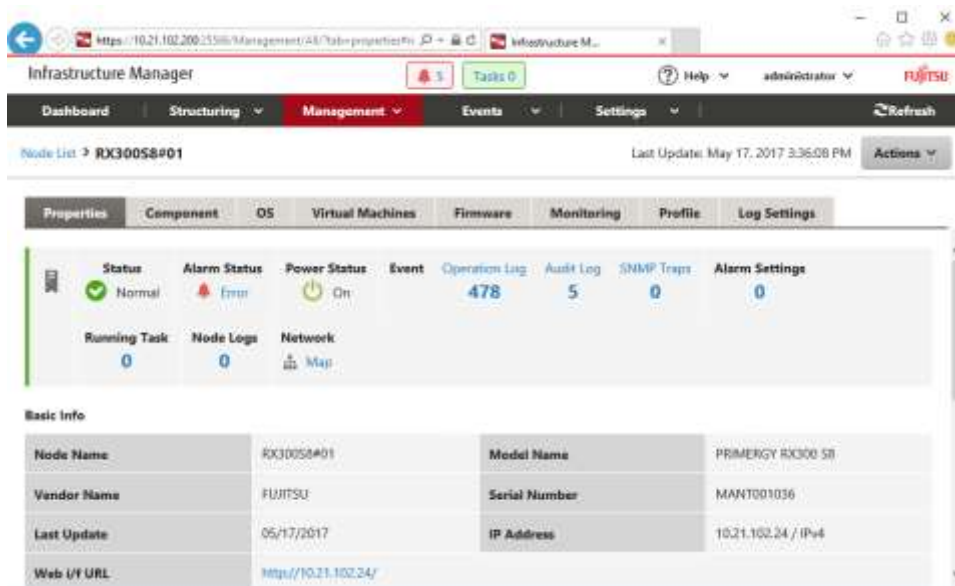




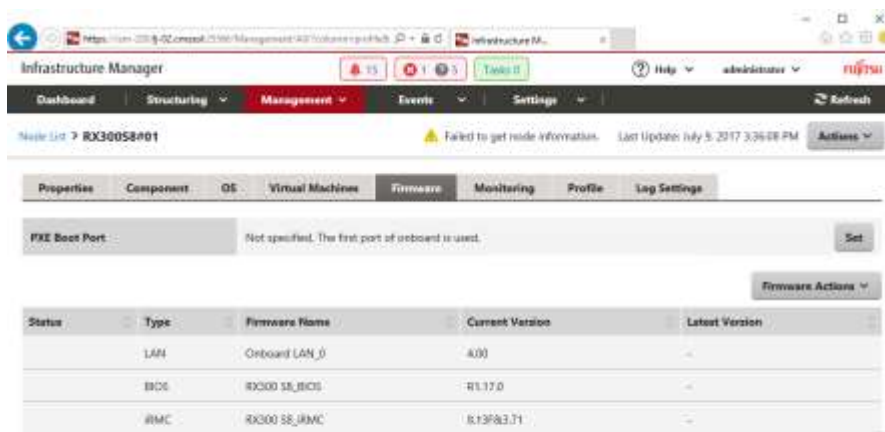
A When selecting [Profile Assignment], the ISM login console is displayed. After logging in to ISM accordingly, the Node Registration screen is displayed.



B When selecting [Node Information], the ISM login console is displayed. After logging in to ISM the Node information screen is displayed.



C When selecting [Firmware Management], the ISM login console is displayed. After logging in to ISM the Node information screen is displayed.



## Point

If the system guide dialog appears, scroll down to the bottom right and click [Close]. Change the settings from [Help]-[System Guide] on ISM.

## 5. How to utilize ISM

---

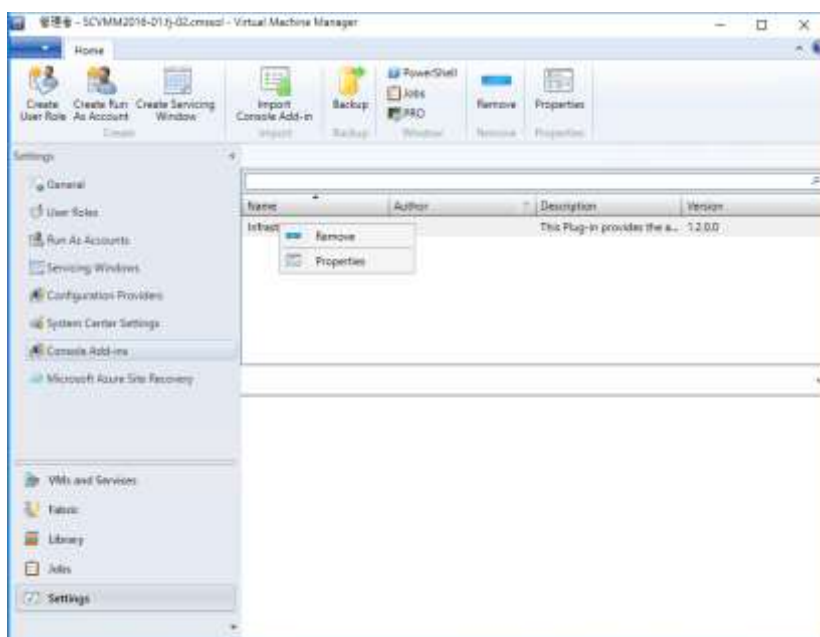
Please refer to the User's Manual of ISM for how to utilize each function in ISM.

## 6. Uninstallation Procedures

---

### 6.1 Delete console add-in.

Login to SCVMM. Click [Console Add-in] under [Administration]. Right click [Infrastructure Manager PlugIn] and select [Delete].



### 6.2 Uninstall the Plug-in

Go to the control panel and find "Infrastructure Manager Plug-in for Microsoft System Center Virtual Machine Manager" from "Program and functions." Right click and select "Uninstall."

## **7. Precautions**

---

- 7.1 NOTE: To use Infrastructure Manager Plug-in for SCVMM, purchase and installation of ISM is required. Without installing ISM, this plug-in does not work properly. Please refer to the ISM start-up guide for more details.
- 7.2 NOTE: To use Infrastructure Manager Plug-in for SCVMM, purchase and installation of SCVMM is required. Without installing SCVMM, this plug-in does not work properly. Please refer to the Microsoft product guides for more details.

## **8. Latest Information**

---

For the latest information about ISM and ISM Plug-in, please contact your local support.