

FUJITSU SEMICONDUCTOR LIMITED
Iwate Plant
Environmental Report
2010



1. Welcome

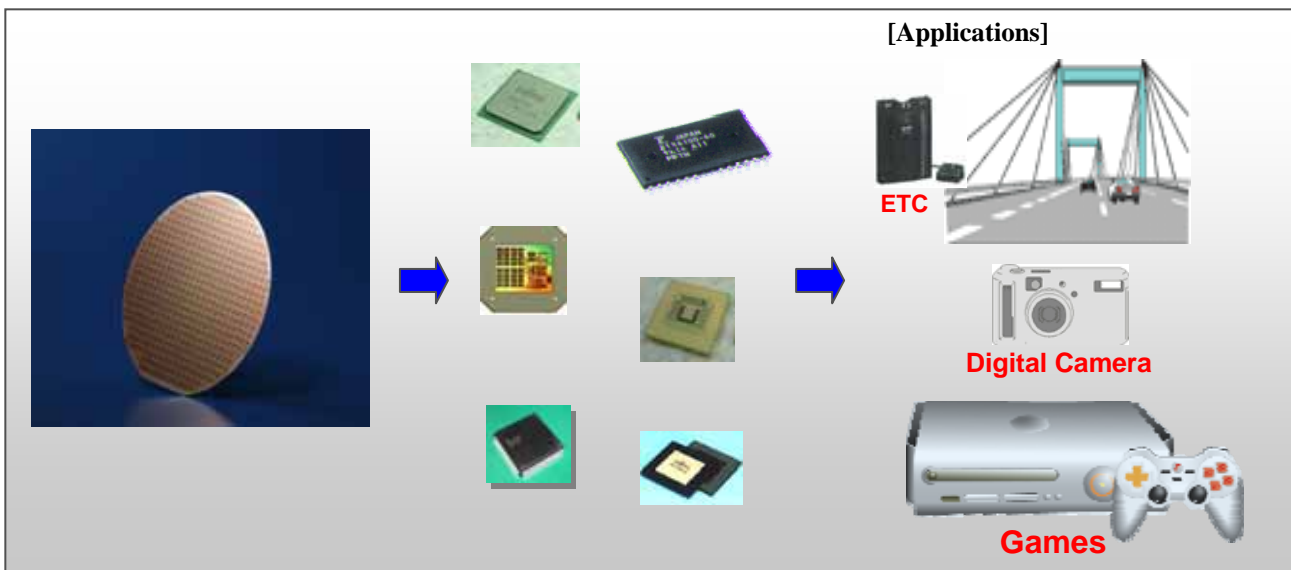


Iwate plant

Plant Manager: Yoshinari Tawarayama

As the result of our environmental activities in the year 2009 in combination with the activities carried out so far to reduce environmental loads, we have achieved to reduce the CO₂ emissions by 5.5% compared to the previous year result. The demand to reduce environmental loads is increasing around the world, including the change in the national initiative to reduce CO₂ from "Team Minus 6%" to "Challenge 25 Campaign." The fiscal year 2010 is the first year for the Sixth Fujitsu Group Environment Action Plan. In addition to the existing activities and further improvements, we are supporting and cooperating with the local community in the aim for "Environmentally and Globally Friendly Iwate Plant."

2. Plant Introduction



This plant, surrounded by the beautiful natural environment in all four seasons, is a semiconductor front-end processing plant to manufacture consumer-oriented Flash microcontrollers and system LSIs for automotive and Audio/Video equipment, home appliances, and games. We continue to provide products to satisfy our customers by carrying out 3Z activities for promoting improvements in quality, delivery, and cost and by engaging in activities for productivity reform focusing on TPS.

Name: FUJITSU SEMICONDUCTOR LIMITED, Iwate Plant
Established: September 1980
Number of employees: 650 (including affiliated companies)
Business: Semiconductor manufacturing

3. Aim and Achievement in Environmental Activities

■ Report on objectives and results of activities in the year 2009

The fiscal year 2009 was the final year for the Fifth Fujitsu Group Environment Action Plan. Accomplishments through the activities so far brought the outcomes, and we were able to achieve the objectives in all the set items.

Objectives in the year 2009	Result	Achievement Status
Reduce the CO ₂ emissions through energy consumption by 12% compared to the result in the year 2007 by the end of the year 2009.	Reduced by 16%	Success
Reduce the emissions of greenhouse gases other than CO ₂ (PFC) by 5.5% compared to the result in the year 1995 by the end of the year 2009.	Reduced by 9.7%	Success
Limit the emissions of volatile organic compounds (VOC) to +10% compared to the result in the year 2000 by the end of the year 2009.	Limited to +8%	Success
Hold 4 or more activities of environmental social contribution.	6 activities	Success
Hold 12 or more activities to improve work processes.	13 activities	Success

■ Objectives of activities in the year 2010

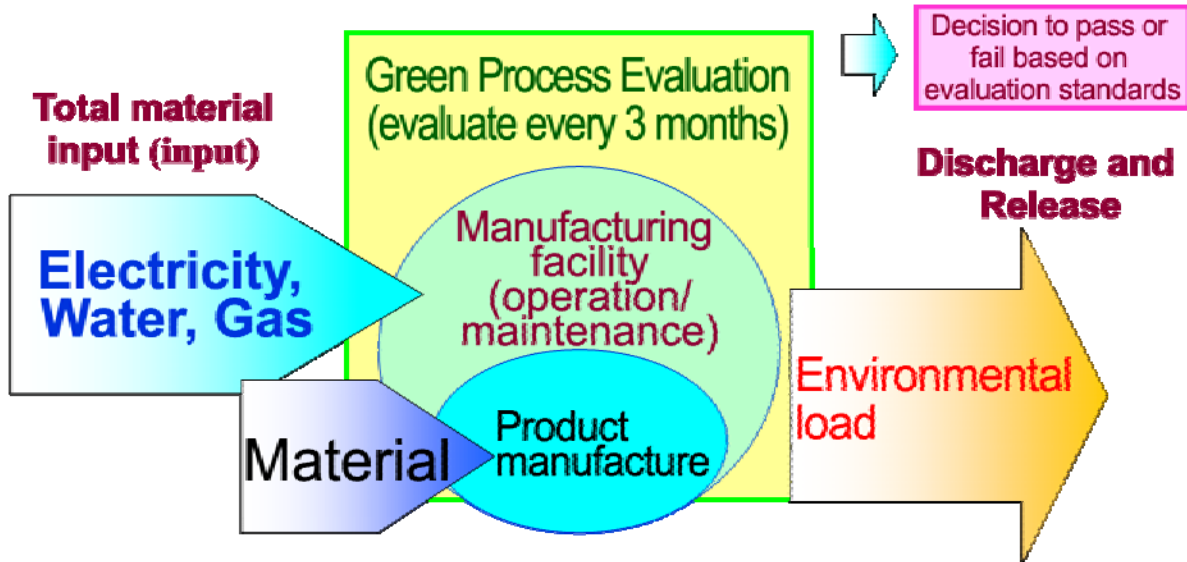
The fiscal year 2010 is the first year for the Sixth Fujitsu Group Environment Action Plan. In addition to the existing activities and the further improvements, we are promoting activities for achieving the Sixth Environment Action Plan along with our new objective, "biodiversity preservation activity."

Objectives in the Year 2010
Reduce the CO ₂ emissions through energy consumption by 37% compared to the result in the year 2007 by the end of the year 2010.
Reduce the emissions of PFC by 47.4% compared to the result in the year 1995 by the end of the year 2010.
Reduce the emissions of priority chemical substance by 26.6% compared to the result in the year 2007 by the end of the year 2010.
Reduce the amount of wastes by 24% compared to the result in the year 2007 by the end of the year of 2010.
Hold 3 or more activities of environmental social contribution.
Hold activities for preserving biodiversity and for planting trees in the plant site (plant 5 trees and graft 100 trees)
Hold 10 or more activities to improve work processes

4. Green Factories

Green process activities

We have been continuously working on reducing the environmental loads by setting the evaluation standards and overall pass line in terms of input materials, chemical substances, energy, and others in each stage of manufacturing.



Examples of main improvements in the year 2009

The CO₂ emissions were reduced by 5.5% compared to the previous year result by the following equipment installed as the measure to save energy.

Example of improvement 1

Replacement to the equipment for countering instantaneous voltage drops



Implement higher energy efficiency by changing from a co-generation system to electrical double-layer capacitors.

Example of improvement 2

More efficient refrigeration operations by installing the free cooling system



Reduce the load on refrigerators by utilizing cold winter air (natural energy) to perform primary cooling of cooling water.



5. Environmental Social Contribution Activity

Every year, we participate in cleanup events held by Kanegasaki-cho and the Kanegasaki-cho Greenery and Flower Bank planting project.

In addition, we clean up the roads around the plant and the river where the plant wastewater flows as the events in the environmental awareness month.



Cleanup of roads around the plant



Cleanup of the river where the plant wastewater flows



Kanegasakicho Greenery and Flower Bank planting project

6. Environmental Awareness Activities for Employees

Every year, we conduct the planned environmental awareness activities for employees.

Along with the environmental awareness month, we held an environmental video festival and environmental related facility tours and carried out environmental education to inform all the employees of the efforts of Iwate Plant toward the environment.



Environmental video festival



Environment facility field trip

7. Efforts for Safe and Secure Plants

- Groundwater
We have established observation wells and periodically analyze and confirm the state of the groundwater.
- Air and water quality
We have set more strict self-management values than the legally regulated values for gas emissions from the boiler and waste water from the plant and have been controlling those values for no excess.
- Environmental safety patrol
Along with the environmental awareness month, we have been carrying out a safety patrol of environment related facilities in cooperation among the plant manager, facility management division, and environment management division.



Groundwater sampling



Environment safety patrol

8. Compliance with Environment-Related Rules and Regulations

We periodically check for changes in laws and regulations and confirm our compliance status. There was no violation of laws and regulations in the year 2009.

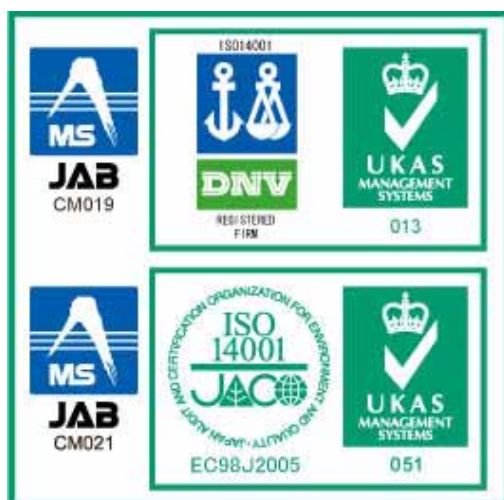
9. Environmental Accounting

The environmental accounting results for the fiscal year 2009 in Iwate Plant provided 974.29 million yen outcomes out of 1148.25 million yen expenses. Outcomes within the business operation area include the effects of energy saving measures and the effects of cost reduction by efficient resource utilization.

2009 Environmental accounting results table (unit: million yen)

Item	Scope	Cost	Outcome
Costs and outcomes within the operation area	Preventing pollutions, preserving the global environment, recycling resources, etc.	1,121	974
Costs and outcomes in upstream and downstream processes	Waste product recycling, green procurement, etc.	0	0
Management activity costs and outcomes	ISO14001, environmental education, environmental public relations, etc.	27	0
Research and development and solution business costs and outcomes	Research of environmentally friendly technology for products, etc.	0	0
Social activity costs and outcomes	Donation to and support of environmental preservation groups, etc.	0.3	0
Handling environmental damage costs and outcomes	Restoration from soil and groundwater contamination, etc.	0	0
Total		1,148.3	974

10. Environmental Management Systems



The Fujitsu Group acquired the global integrated certification in March 2006 including Fujitsu, its domestic consolidated subsidiaries, and its foreign consolidated subsidiaries. Iwate Plant was evaluated as being compliant with standard requirements for valid implementations based on the results of an update check by the Japan Audit and Certification Organization (JACO) in December 2009. We continue to improve our activities for reducing environmental loads to show more practical results.

FUJITSU SEMICONDUCTOR LIMITED, Iwate Plant

Inquiries

Name of supervising division: Iwate Plant
 Address: 4-2 Moriyama, Nishine, Kanegasaki-cho, Isawa-gun, Iwate
 TEL: +81 197-44-6605
 FAX: +81 197-44-2556

Publishing supervisor: Yoshinari Tawarayama
 Editing supervisor: Yoshinori Hatakeyama
 Issued date: November 2010
 Report covered period: April 2009 to March 2010
 Report URL: <http://edevice.fujitsu.com/en/eco/>

