

FUJITSU Printer 9870

Boarding Pass & Baggage Tag Printer Airport Ticketing Solution – General Purpose Printer

Introduction

FUJITSU Printer 9870 is General purpose printer using the essence of Fujitsu’s most advanced technologies. It has not only high performance and reliability but also its smallness for limited space and reasonable price for customers.

Main Features

■ World Class performance & Reliability

- AFR (Annualized Failure Rate) is less than 1%
- The Fastest Print Speeds up to 260mm/sec (10 inch/sec) in high-speed mode

■ Compact Design

- W 150 - H 131.5 - D 201 (mm)/ W 5.9 - H 5.2 - D 7.9 (inch)
- Weight 1.9 Kg / 4.2 pound(Excluding cable cover)

■ User Friendly

- Single action to set Baggage tag roll
- Easy maintenance for thermal head

■ Versatile Interface

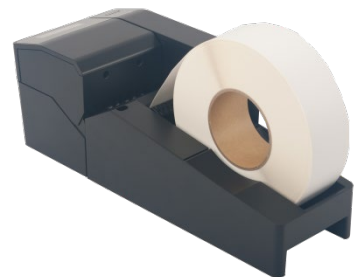
- Fully AEA 2012
- Microsoft’s Windows® driver for airline use
- Certified to;
 - ✓ SITA Airport Connect (CUTE)
 - ✓ SITA Liaison
 - ✓ ARINC iMUSE / vMUSE / cMUSE
 - ✓ Navitaire GoNow&NewSkies are compatible
 - ✓ Amadeus Airport IT Americas EASE
 - ✓ TravelSky NEW APP/ Angel NEW APP



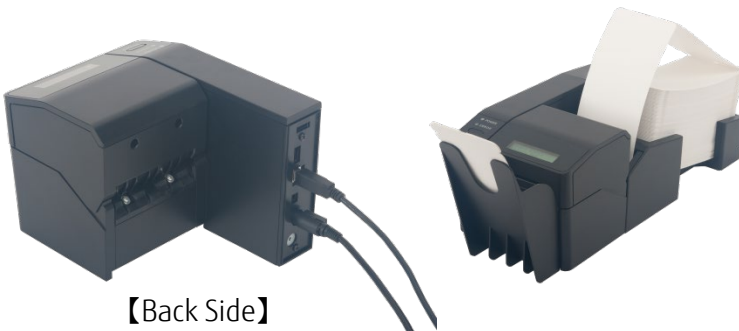
Product No.
KD04107-A001
(Without LCD)



Product No.
KD04107-A011
(With LCD)



Roll Stand
Option for Baggage Tag



【Back Side】



Stacker



Tray

Options for Boarding pass

Boarding Pass & Baggage Tag Printer

Specifications

Product life (M = Million, K = Thousand)	<p>ATB / Thin Paper / BTP</p> <ul style="list-style-type: none"> • Printer : 5 years or 550K tickets • Thermal Head : 750K / 750K / 300K (Tickets) • Cutter : 500K / 2M / 1M (Tickets) <p>※Based on mechanical reference values for recommended media</p>
MCBF (Mean Cycles Before Failure) MTBF (Mean Time Between Failure) AFR (Annualized Failure Rate)>	<ul style="list-style-type: none"> • 70 millions lines • 440,000 Hours • Less than 1%
Jam Rate	1/20,000 for Boarding Pass / 1/10,000 for Baggage Tag ※Due to our test
Environment Installed	<p>150VA maximum at operation, 10VA maximum at standby (Print Duty 9%)</p> <ul style="list-style-type: none"> • At operation : 5 - 35°C / 10 - 80%RH Alarm buzzer, 0 - 5,000m altitude • At storage : -20 - 60°C / 8 - 90%RH
Easy Maintenance	<p>The computer tool for diagnostic and test function Statistics data for transactions by log files Dot detection Error message on LCD (Limited to LCD specifications)</p>
Printer modules	<ul style="list-style-type: none"> • Direct Thermal Resolution : 203dpi • Printer Line width : 80mm • Selectable Printer Speed : 5,6,7,8,9,10 inch/sec • Selectable Print Density
Barcode	<ul style="list-style-type: none"> • Conform to the AEA standard -1D : Interleaved 2 of 5 / Industrial 2 of 5 / Code 39 & Code 128 / EAN 13 -2D : PDF417 / Aztec / Data Matrix / QR
Conformable Standards	<p>: Fully AEA compatible : IATA Resolution 722e : IATA Resolution 740 and 1740e</p>
Data Interface	<ul style="list-style-type: none"> • AEA standard • Certified to : SITA AirportConnect (CUTE) / SITA Liaison / ARINC vMUSE / ARINC iMUSE ARINC cMUSE / Navitaire GoNow&NewSkies are compatible Amadeus Air IT Americas EASE / Travelsky NEW APP Angel NEW APP • Microsoft's Windows® driver for airline use ※Update sequentially
Physical Data	<p>F9870 : W 150 – D 260 – H 131.5 (mm) / 1.9Kg [W 5.9 – D 10.2 – H 5.2 (inch) / 4.2 lb] F9870 + Roll Stand : W 150 – D 387.4 – H 131.5 (mm) / 2.5Kg [W 5.9 – D 15.2 – H 5.2 (inch) / 5.5 lb] F9870 + Tray + Stacker : W 150 – D 468.8 – H 155 (mm) / 2.4Kg [W 5.9 – D 18.4 – H 6.1 (inch) / 5.3 lb]</p>
Connectivity	USB 2.0 (F9870 GPP Virtual com enable to connect with RS232C) / F9870 contains USB cable (2 meters)
Power Supply	100 – 240V, 50/60Hz
Agency Approvals	UL • cUL / CE Marking / CCC / RCM ※Updated sequentially
Option	Roll Stand (Baggage tag roll paper), Tray & Stacker (Boarding pass paper)

Contact

FUJITSU FRONTECH LIMITED

Global Business Group

1776 Yanokuchi, Inagi-shi, Tokyo 206-8555, Japan

URL: <https://www.fujitsu.com/jp/group/frontech/en/>

Inquiry: <https://www.fujitsu.com/jp/group/frontech/en/contact/>