

## Company Profile

**- Company Name**

Fujitsu Frontech Limited

**- Foundation**

November 9, 1940

**- Capital**

JPY8,457,500,000.-

**- Account Closing Date**

March 31

**- Representative**

Kazuhiro Igarashi, President and CEO

**- ISO14001**

Certificate No.: EC98J2005-D050

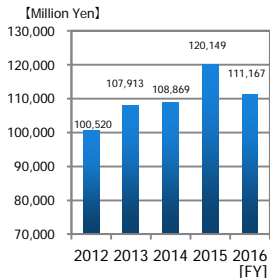
**- Address**

- Headquarter / Tokyo Plant  
1776 Yanokuchi, Inagi-shi, Tokyo, 206-8555 Japan
- Niigata Plant  
17-8 Yoshidahigashisakae-cho, Tsubame-shi, Niigata Prefecture, 959-0294 Japan
- Omiya Solution Center  
7th Floor, Omiya JP Bldg., 1-11-20 Sakuragi-cho, Omiya-ku, Saitama-shi, Saitama Prefecture, 330-0854 Japan
- Osaka Solution Center  
8th Floor, Osaka Tokio Marine & Nichido Bldg., 2-2-53 Shiromi, Chuo-ku, Osaka-shi, Osaka Prefecture, 540-0001 Japan
- Kumagaya Service Solution Center  
1224 Nakanara, Kumagaya-shi, Saitama Prefecture, 360-0801 Japan (Inside the Fujitsu Kumagaya Plant)
- Omori Office  
2nd Floor, East Square Omori, 6-20-14 Minamioi, Shinagawa-ku, Tokyo, 140-0013 Japan

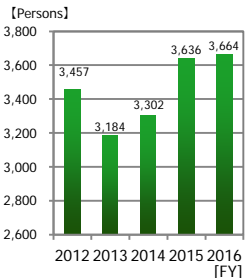
**- Group Companies (Japan and Outside Japan)**

- Life Create Limited (LC: Japan)
- Fujitsu Frontech Systems Limited (FJFS: Japan)
- Totalizator Engineering Limited (TEL: Japan)
- Fujitsu Die-tech Corporation of The Philippines (FDTP: Philippines)
- Fujitsu Frontech (Shanghai) Limited (FFTS: China)
- Fujitsu Frontech North America Inc. (FFNA: U.S.A.)

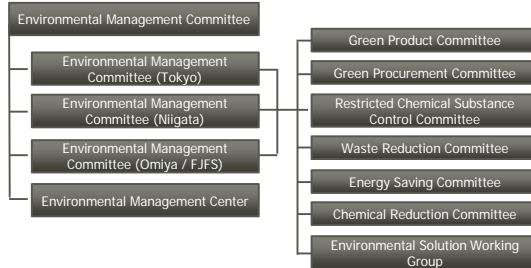
**- Transition of Sales (Consolidated)**



**- Transition of Employees (Consolidated)**



**- Environmental Committees**



\* Under the organization of ISO 14001, Omori Office is working as a sub group of Head Quarter / Tokyo Plant. However, Kumagaya Service Solution Center and the other branches work on the EMS activities independently (not as sub group) because each of them is located in each Fujitsu Office.

**- Fujitsu Frontech Way**

All employees of Fujitsu Frontech Group will mitigate a variety of risks caused by our business on the basis of Corporate Vision, Corporate Values, and Code of Conduct & Principles defined in "Fujitsu Frontech Way" to fulfil social responsibility.

Based on the above policy, we will address continuous enhancement of corporate value by revising "Basic policy related to preparation of internal control" to ensure adjustment of business and by making our work efficient.



## Business Activities & Environmental Burden - Material Balance -

Based on environmental performance data, we capture the whole image of our environmental activities to promote our eco-friendly business.

