

Promotion of Resource Circulation

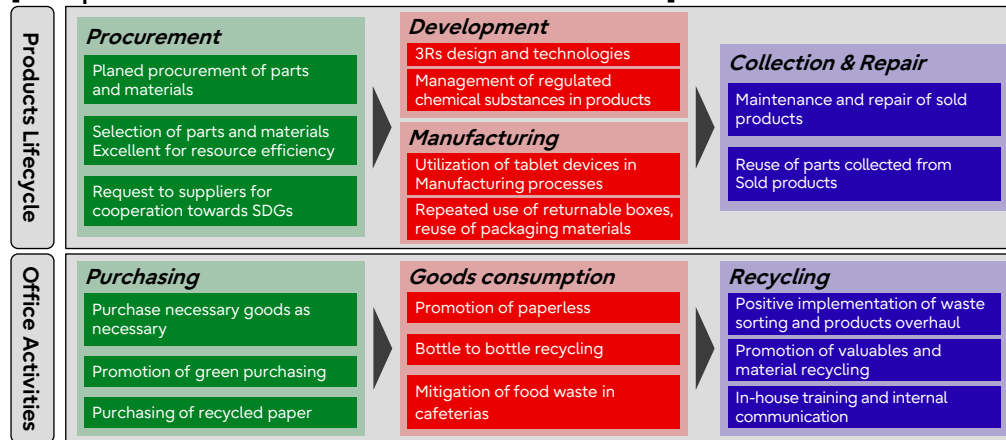
Recognizing “Resource Circulation” as one of the material environmental issues, we take resource circulation into consideration in both business and office activities.

Actions on Resource Circulation in Fujitsu Frontech Group

In our businesses, especially our products, we promote activities conducive to resource circulation in the whole lifecycle, not only by taking measures in each phase which is “Procurement”, “Development” and “Manufacture”, but by implementing “Collect and Repair” after delivering products to customers. In “Development”, we make efforts on such as reduction of mass and volume of products, reduction of the number of parts loaded onto products and partial adoption of bioplastic materials. In “Manufacture”, we, for instance, implement reduction of paper use in process control by using tablets, utilization of returnable boxes and reuse of packaging materials. In “Collection and Repair”, we promote mainly long-term use of products by maintenance and repair, as well as collection and reuse of parts loaded onto end-of-life products.

On the other hand, in our office activities, we take contributable actions to enhancing resource circulation, from viewpoints of “Purchasing of goods” and “Consumptions of goods” as well as “Recycling” in time of waste disposal. (Detail: [Link](#))

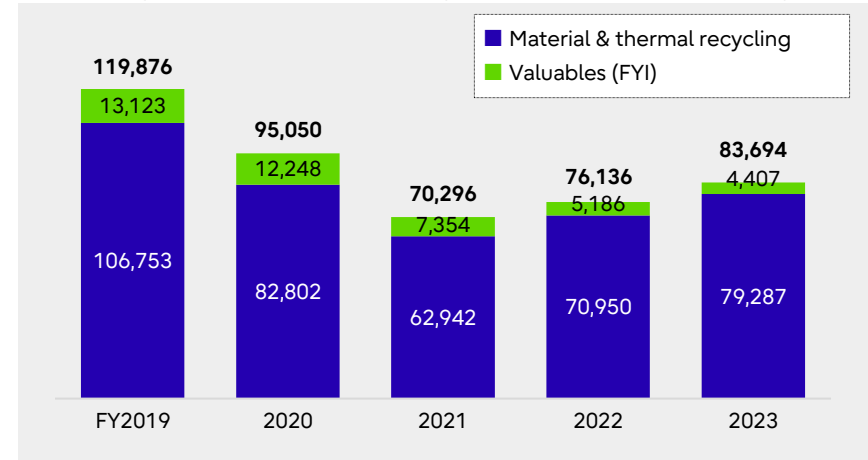
[Examples of our actions toward sustainable resource use]



Response to issues of plastic waste

We strive to reduce plastic waste which has negative impacts on environmental issues such as marine pollution and climate change. Up to now, we have taken measures including recycling of plastic parts and packaging materials. Recently, we have started reducing plastic waste more positively than before, through reinforcement of our alignment between each site, enhancement of plastic-related in-house training, etc., based on the philosophy of “Plastic Resource Circulation Promotion Act” enforced in April 2022 in Japan.

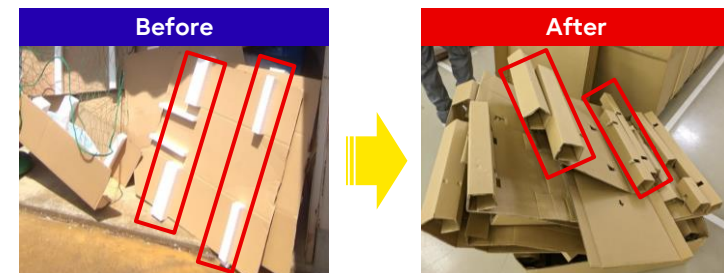
Progress of plastic recycling based on the Act (Unit: kg)



Includes: HQs / Tokyo Plant, Niigata Plant, Kumagaya SSC and Construction Administration Dept.

Actions toward reducing plastic waste

As examples of specific measures to reduce plastic waste, we, in cooperation with a beverage supplier, have adopted “Bottle to bottle” recycling (a way to recycle used PET bottles into new ones), concerning PET bottles disposed within our sites. Moreover, in Niigata Plant, we changed the design of packaging materials of our ATMs (FACT-X) from a type of combination of cardboard boxes and polystyrene foams into one of fully using cardboard boxes. As a result, we are now able to fully recycle the packaging materials as paper materials, although in the past it was difficult for us to recycle because polystyrene foams were pasted onto cardboard boxes.



Before and after of packaging materials (Niigata Plant)