

## Environmental Management System

**We establish and operate Environmental Management System (EMS) based on ISO14001, to enhance our environmental performance.**

### Environmental Management System in Fujitsu Frontech Group

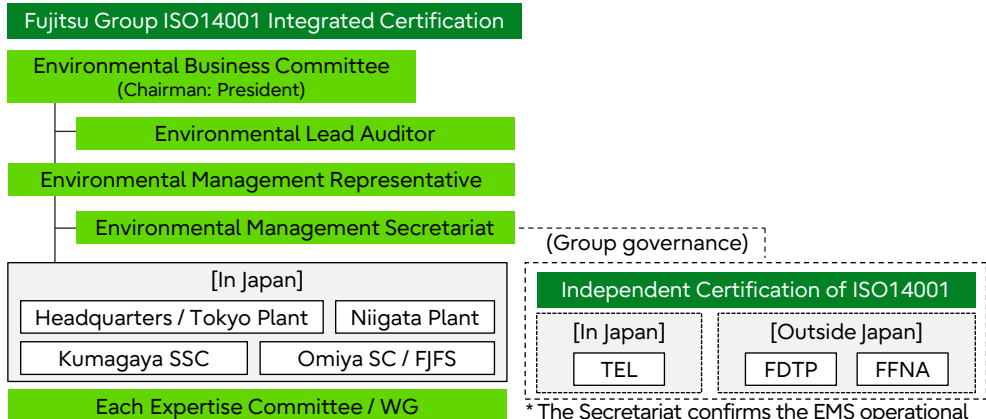
We obtained the certification of ISO14001 for the first time in 1998, recognizing the importance of actions on the environment issues as one of the main responsibilities of businesses. After that, we transited to “Fujitsu Group Integrated Certification” in 2005, so as to realize aims such as “Further reinforcement of Group governance”, that Fujitsu Group had set.

### Environmental Organization

We organize "Environmental Business Committee", whose chairman is a president, with the approval of our "Business Committee", composed of directors and executive officers involved in our business execution, to discuss comprehensive issues relevant to our environmental business. In this committee, we, for example, review medium- to long-terms issues, make policies, share risks and opportunities in business derived from climate change, and consider the countermeasures, in the purpose of enhancing the environmental business and reinforcing the governance.

In addition, we also organize “Environmental Management Committee” whose chairman is Site Controller (executive / plant manager) at each EMS site. In this committee, we, for instance, discuss the whole environmental activities, review issues at a site level, make policies, share risks and opportunities, and consider the countermeasures.

#### Fujitsu Frontech Group Environmental Organization Chart (As of September 2024)



#### [Official names of our bases in and outside Japan]

Kumagaya SSC: Kumagaya Service Solution Center  
 Omiya SC: Omiya Solution Center  
 FJFS: Fujitsu Frontech Systems Limited

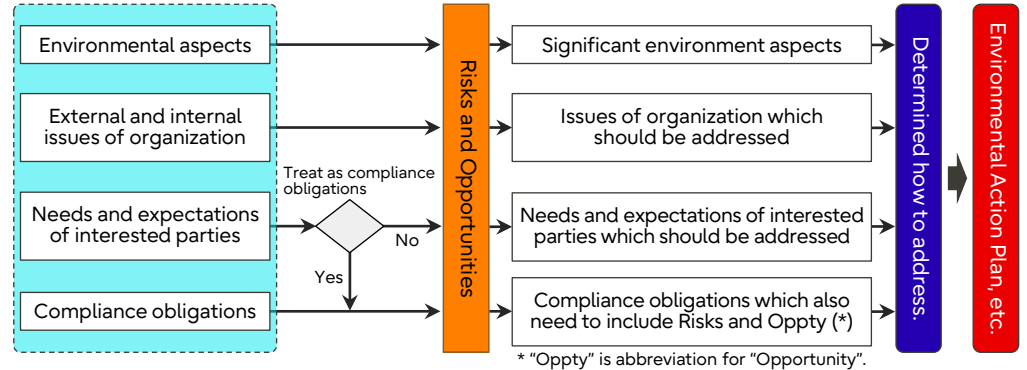
TEL: Totalizator Engineering Limited  
 FDTP: Fujitsu Die-Tech Corporation of the Philippines  
 FFNA: Fujitsu Frontech North America Inc.

\* The Secretariat confirms the EMS operational status of each Group company acquiring independent certification periodically, and reports on the results at our management review.

### Method to Identify and Address Environmental Risks and Opportunities

We, through the EMS established on the basis of ISO14001, identify and evaluate material environmental risks and opportunities, to be determined how to address these issues. In addition, we, based on ISO14001:2015, establish and operate processes to identify risks and opportunities having impacts on our business, which include factors besides “Environment” like “External and internal issues of organization” and “Needs and expectations of interested parties”.

#### [Processes of Identifying and Evaluating Risks and Opportunities]



\* “Oppty” is abbreviation for “Opportunity”.

#### [Major Risks and Opportunities Determined to Address as EMS Issues (FY2024)]

Risks & Opportunities Determined to Address as EMS Issues		Items in “Action Plan”	
<b>&gt; Significant environmental aspects</b>			
1	Some kinds of energy including electricity	Risk	“Climate”
2	Waste	Risk	“Resource Circulation”
<b>&gt; Issue of organization (external and internal)</b>			
1	Countermeasures against climate change	Risk	“Climate”
2	Sustainable resource use	Risk	“Resource Circulation”
3	Conservation of biodiversity and ecosystem	Risk	“SDGs”
4	Contribution to SDGs & Gain of business chances	Oppty	“Resource Circulation” and “SDGs”
<b>&gt; Needs and expectations of interested parties</b>			
1	Promotion of ESG	Oppty	“SDGs”
2	Contribution to Fujitsu Climate and Energy Vision	Oppty	“Climate”
3	CDP, SBTi, RE100, TCFD, TNFD, etc.	Oppty	“Climate”