

Security Countermeasures

Security by all possible measures that have passed through the rigorous examination of the FUJITSU Group, combines the high reliability, availability, maintainability and the integrity and safety delivering.

We are certified 'Privacy Mark', evidence of business operators that are handled properly personal information and 'Information disclosure certification system according to ASP/SaaS safety and reliability', evidence of Information disclosure for ASP/SaaS safety and reliability.

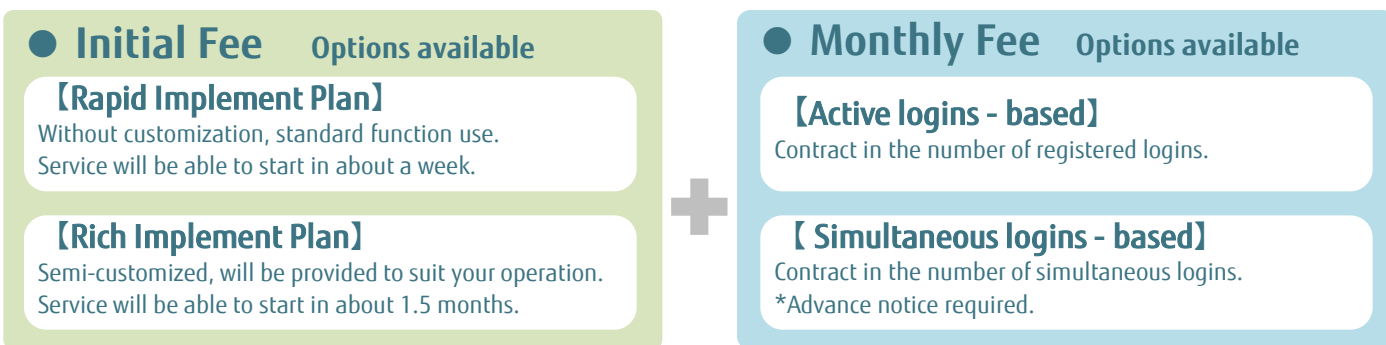
In addition, through the vulnerability assessment by a trusted third party, we are committed as a service provider to be able to use safely.



Pricing and Delivering (Monthly payments based on annual contract)

KnowledgeC@fe is web-based SaaS service that provided through the Internet.

Can be used only monthly fee and initial fee!



System Requirements

OS for PC : Windows Vista SP2 / Windows 7 / Windows 8 / Windows 8.1

Capable browser for PC : Internet Explorer 7,8,9,10,11/ Firefox ESR 17

Mobile / OS for Mobile Devices : FUJITSU ARROWS Tab F-05E (Android4.0) / iPhone, iPad (iOS 5, 6, 7)

Capable browser for Mobile Devices : Android / Mobile Safari

* Mobile devices are compatible with the participant function and group administrator functions only.

* Video supports PC, iPhone, and iPad. Android is not supported.

* iOS 6, 7 are supported with mobile compatible courses only.

* More details for operating environment are available on our Web site (Japanese Only).

Our Valued Customer

KnowledgeC@fe has been trusted by these companies.

- | | |
|---|--|
| <ul style="list-style-type: none"> • FamilyMart Co., Ltd. • FUJITSU LIMITED • Japan International Cooperation Agency • Johnson & Johnson K.K. • KIRIN BUSINESS SYSTEM COMPANY, LIMITED | <ul style="list-style-type: none"> • Metal One Corporation • Nikkei Inc. • SAP Japan Co., Ltd. • SOLAR FRONTIER K.K. • Tokyo Stock Exchange Group, Inc. |
|---|--|

*As of April 2014, in alphabetical order.

FUJITSU LEARNING MEDIA LIMITED

NSS-II Bldg.
2-13-34 Konan, Minato-ku, Tokyo, Japan 108-0075
(0120)55-9019 within Japan only or (81)-3-6710-1500
E-mail: flm-contact-en-gr@cs.jp.fujitsu.com

FUJITSU Training and Education Service E-Learning

For your class-room training, for your e-learning and for your informal learning!

KnowledgeC@fe in SaaS V3.0

Learning Management System powered by FUJITSU's training and education service company

To learn from each other, to teach each other, KnowledgeC@fe is support a the new e-learning style to take advantage of the learning of individuals to the development of the organization.

KnowledgeC@fe in SaaS is a Learning Management System to support strongly the human resource development of your company.

Utilize in various scenes in human resource development

- Product knowledge training for sales staff
- Management of human resource development plan
- Portal site for new-hires and prospective employee training management
- Knowledge library to grow on their own
- Learning community of Certificated Persons
- All employees education and information security

KnowledgeC@fe is a trademark of FUJITSU LEARNING MEDIA LIMITED.

shaping tomorrow with you
社会とお客様の豊かな未来のために



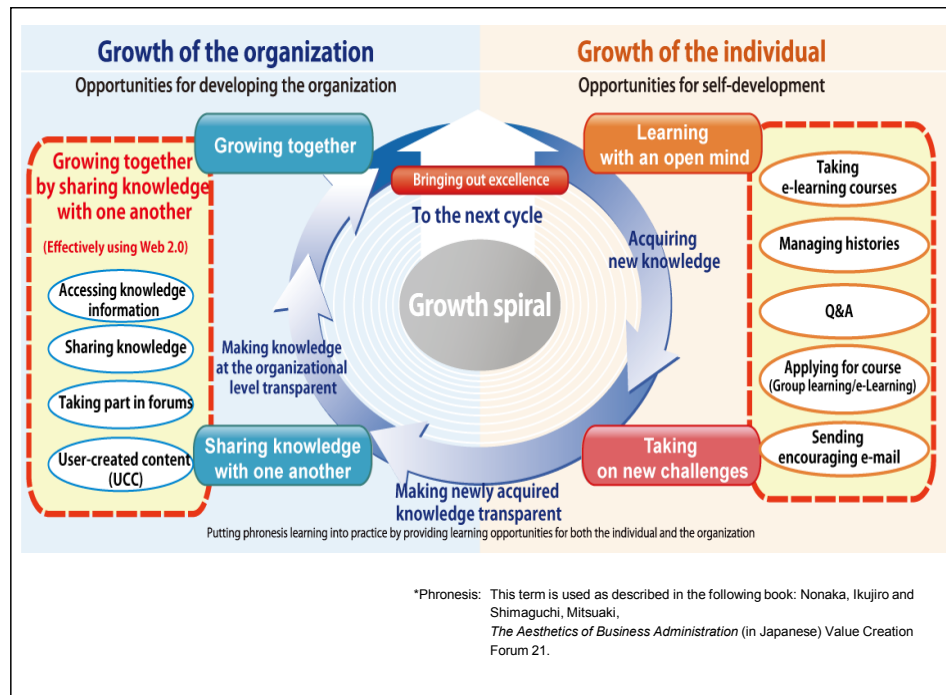


How do we think of what to learn with ICT ?

The 4-Step-Cycle

1. Acquiring of knowledge : Learn first, then get knowledge.
2. Editing of knowledge : Utilize to work, to use.
3. Sharing of practice and experience : Share your experiences, raise the quality of work.
4. Aware the lack of knowledge and evaluation : Know the strengths and weaknesses, step up to the next.

KnowledgeC@fe in SaaS Development Principles



In the current climate of uncertainty where there are numerous issues with no "right" answers, our company believes that what is precisely very important to the development of companies is for their employees to "actively exchange opinions, learn from one another, and grow together."

KnowledgeC@fe in SaaS supports various forms of "learning" and "growth," and provides comprehensive support to the human capital development efforts of our customers.

How stakeholders do you use?

[Participant]

- E-learning**: Visualization in learning progress will be able to motivate for the users.
- Course Library**: Providing self-training library in response to the needs and interests of their own.
- Communication**: Learning with others and make a new style of learning.

[Manager and Supervisor]

- Manage Your Subordinates**: Supervisor can check the learning progress of subordinates and follow them.
- Approving Applications**: Possible to set the approval flow in accordance with the organizational structure.

[Course Administrator]

- Manage Learning Status**: Manage learning history by courses, users, or groups.

- Data shelf registration / download**: Register/download user data, learning history.

- Announce for users**: Notice to all users, specific groups, and specific course groups.

- More than ever...**: Register and manage various seminars, group training, and study sessions.

[Course Developer]

- e-Learning Development**: Develop your own e-learning materials in a simple and easy operation.

- Confirmation / correction of training scores**: Manage and Aggregate for test and questionnaire.

- Automated E-Mails**: Automated Email notifications to the users are available.

Why do you choose KnowledgeC@fe in SaaS V3.0 ?

1. **A proven and trusted System, a thorough support system**
More than 5,000 companies, including the distribution industry and government services, have trusted our services. Our support with the knowledge and know-how obtained from a number of cases, has been trusted by many valued customers.
2. **For Your Smart Devices**
Supports PC, smartphones and tablets. You will be able to learn anytime, anywhere, and share with friends. In addition, you can perform the activity to find the missing knowledge.
3. **Multi-language Capability**
Supports in English, Simplified-Chinese, Traditional-Chinese and Japanese. The user can choose to use language anytime.

4. **Life log / learning portfolio**
The results of any kind of study of learners, will be able to store in the life log by TinCan API. Analyzing the life log as a big data and create portfolios of learning, will be able to help for learners.
5. **Utilizing the Social Learning, Change from the self-study**
Social learning will allow you to share with fellow your awareness, to achieve a deepening of learning through awareness of others.
6. **A detailed analysis of learning history**
You can view or download the learner's data, such as the test results and progress rate details, the contents of the questionnaire. You can be various analyzes for learning the provided content.