

# **Status Monitor User's Manual**

**Fujitsu Dot Matrix Printer  
DL7600Pro / DL7400Pro**

---

## ABBREVIATIONS USED IN THIS MANUAL

Windows® 11 Education Windows® 11 Enterprise Windows® 11 Pro Windows® 11 Home	referred to as Windows 11
Microsoft® Windows Server® 2022 Datacenter Microsoft® Windows Server® 2022 Standard Microsoft® Windows Server® 2022 Essentials	referred to as Server 2022
Microsoft® Windows Server® 2019 Datacenter Microsoft® Windows Server® 2019 Standard Microsoft® Windows Server® 2019 Essentials	referred to as Server 2019
Microsoft® Windows Server® 2016 Datacenter Microsoft® Windows Server® 2016 Standard Microsoft® Windows Server® 2016 Essentials	referred to as Server 2016
Windows® 10 Education Windows® 10 Enterprise Windows® 10 Pro Windows® 10 Home	referred to as Windows 10
Microsoft® Windows Server® 2012 R2 Datacenter Microsoft® Windows Server® 2012 R2 Standard Microsoft® Windows Server® 2012 R2 Essentials	referred to as Server 2012 R2
Windows® 8.1 Enterprise Windows® 8.1 Pro Windows® 8.1	referred to as Windows 8.1
Microsoft® Windows Server® 2012 Datacenter Microsoft® Windows Server® 2012 Standard Microsoft® Windows Server® 2012 Essentials	referred to as Server 2012
Windows® 8 Enterprise Windows® 8 Pro Windows® 8	referred to as Windows 8
Microsoft® Windows Server® 2008 R2 Enterprise Microsoft® Windows Server® 2008 R2 Standard	referred to as Server 2008 R2
Windows® 7 Ultimate Windows® 7 Enterprise Windows® 7 Professional Windows® 7 Home Premium Windows® 7 Starter	referred to as Windows 7
Microsoft® Windows Server® 2008 Enterprise x64 Edition Microsoft® Windows Server® 2008 Enterprise Microsoft® Windows Server® 2008 Standard x64 Edition Microsoft® Windows Server® 2008 Standard	referred to as Server 2008
Windows® Vista Ultimate Windows® Vista Enterprise Windows® Vista Business Windows® Vista Home Premium Windows® Vista Home Basic	referred to as Windows Vista

---

## ABOUT THE TRADEMARK

---

Company names and product names given in this document are registered trademarks or trademarks of their respective companies.

---

---

## TABLE OF CONTENTS

	ABBREVIATIONS USED IN THIS MANUAL.....	2
	ABOUT THE TRADEMARK .....	3
CHAPTER 1	INTRODUCTION .....	5
	1.1 OVERVIEW .....	5
	1.2 RELATED DOCUMENTS .....	5
	1.3 SYSTEM REQUIREMENTS .....	5
CHAPTER 2	HOW TO INSTALL .....	6
	2.1 INSTALLATION .....	6
CHAPTER 3	STATUS MONITOR FUNCTIONS .....	9
	3.1 STARTING THE STATUS MONITOR .....	9
	3.2 STATUS WINDOW .....	11
	3.3 ICON INDICATION .....	12
	3.4 MOUSE OPERATION ON ICON .....	12
CHAPTER 4	STATUSES DISPLAY BY STATUS MONITOR.....	13
CHAPTER 5	TROUBLESHOOTING .....	15
	5.1 PROBLEMS IN THE STATUS MONITOR .....	15

---

# CHAPTER 1 INTRODUCTION

## 1.1 OVERVIEW

This document describes how to use the Status Monitor for the FUJITSU DL7400Pro / DL7600Pro printer. The FUJITSU DL7400Pro / DL7600Pro Status Monitor is a Windows program that displays the printer's status on your computer.

## 1.2 RELATED DOCUMENTS

Related documents are shown in the following table. Refer to them as necessary.

Document Name	Reference Folder / File Name
User's Manual	\\Documents\User's Manual\\(Printer Name)\\(Language)\\Cxxx-Exxx-01xx.PDF
Printer Driver Installation Guide	\\Documents\\InstallGuides\\Installguide_xx.PDF
PR-LN4 Software Guide	\\Documents\\PR-LN4 Software Guide\\PR-LN4_SoftwareGuide.pdf

## 1.3 SYSTEM REQUIREMENTS

The Status Monitor can be used with the following system configurations.  
Personal computers equipped with the following interfaces and running a supported operating systems.  
If you use LAN interface, use the original printer port of LAN made by Settings Tool.

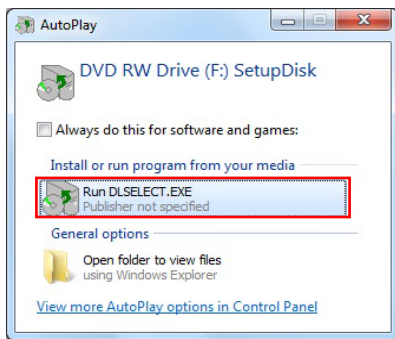
---

# CHAPTER 2 HOW TO INSTALL

## 2.1 INSTALLATION

In this section, Windows 7 Professional is used as an example of how to install the "Status Monitor" on a PC using Windows 7 / Server 2008 R2 and later operating system.

If the [User Account Control] dialog box is displayed, click [Allow] or [Yes].



1. Log on as an administrator of the computer.
2. Insert the Setup Disk into your PC's CD-ROM or DVD drive.

The Auto Play window will be displayed.

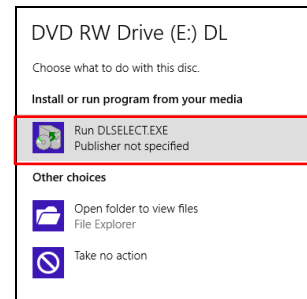
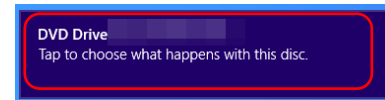
Click **Run DLSELECT.EXE**.

If the Auto Play window is not displayed, use Explorer or another application to open CD-ROM.

And double click the **DLSELECT.EXE** file.

\*1) For Windows 8 / Server 2012 and later:

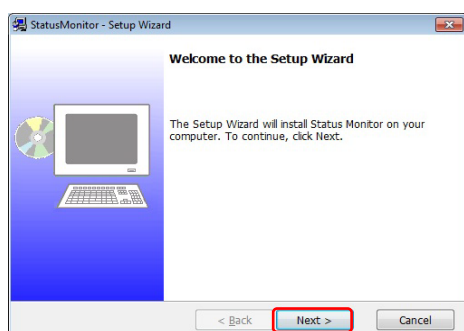
Click the Toast Notification, and click [Run DLSELECT.EXE]



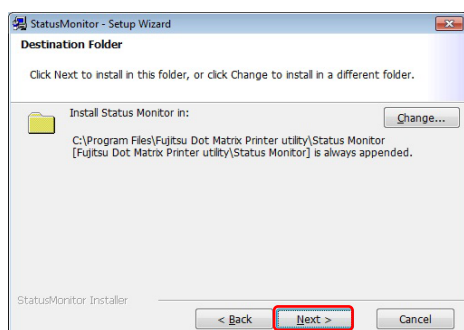


3. The FUJITSU DL Series Software Setup window is displayed.  
From the printer driver list, select **PR-LN4(LAN) Status Monitor** and click the [OK] button.

\*1) If the menu screen does not appear, run "DLSELECT.EXE " on this CD.

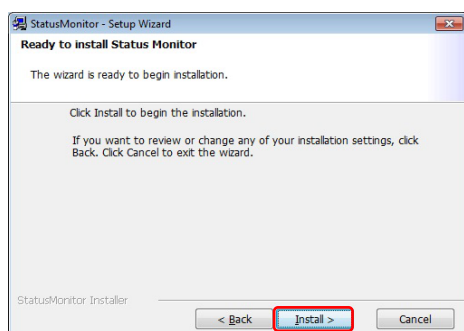


4. The Status Monitor window is displayed.  
Click [Next].

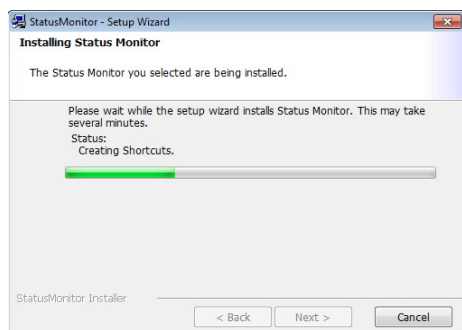


5. Specify the installation folder.  
Click [Next].

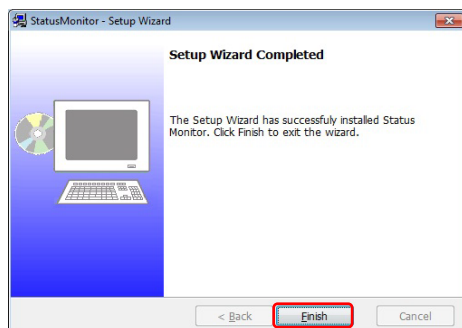
\*1) Click Change to select the installation folder.



5. Start installation.  
Click [Install].



6. A screen appears indicating that the installation is in progress. Please wait for the installation to complete.



7. This window is displayed after the "Status Monitor " installation completes. Follow the on-screen instructions and click [Finish].



---

# CHAPTER 3 STATUS MONITOR FUNCTIONS

This section describes the functions of this Status Monitor.

Status Monitor appears minimized (iconized in the task tray) when started. When an error occurs, whether in standby or when printing, it pops up (as a window).

If you open Status Monitor when there are no current Windows print jobs, Status Monitor retrieves and displays the printer status.

This section describes how to print using the regular operating system print client function.

\*1) Cautions When Using the LAN Interface.

- This status monitor can be used with dedicated LAN ports.  
It does not support Windows standard LAN ports.
- Status monitoring is only performed during printing.  
Status monitoring is not performed while the printer is idle.

## 3.1 STARTING THE STATUS MONITOR

To use Status Monitor, start it before printing any documents.

Status Monitor is added to the Windows "Startup" folder when it is installed which means it launches automatically when you start Windows.

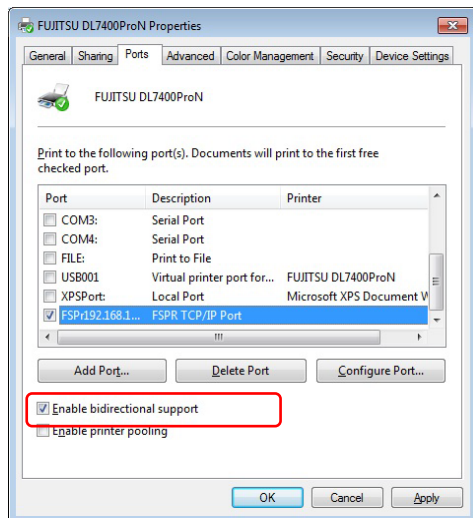
If you print a document after shutting down Status Monitor, it is not automatically restarted.

To display Status Monitor, you need to set the printer interface as bi-directional.

Enable the bi-directional communication function from the printer driver.

Note that the bi-directional communication function is enabled by default when the printer driver is installed.

To enable the bi-directional communication function, open the printer properties, select the "Enable bidirectional support" checkbox in the "Ports" tab, and then click [OK] or [Apply]. (The following example shows the printer properties on Windows 7.)

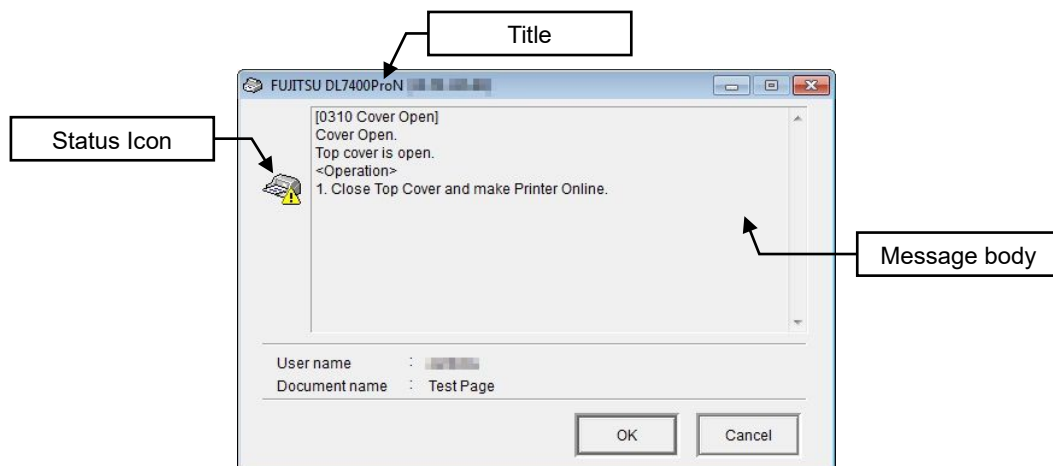







---

\*1) Recommendations

- To use the Status Monitor, set the FUJITSU DL7400Pro or DL7600Pro printer as the "Default printer" and enable the bi-directional communication function in the printer driver.
- When using the Status Monitor, click the [Cancel] button in the Status Monitor if you need to cancel a print job due to a printer error.
- If you cancel printing from the printer folder when the Status Monitor is running, the data is not deleted even if you reset the printer and the printer may no longer operate correctly (unless you recover the printer by turning it off and on again).
- If you cancel printing by clicking the [Cancel] button in the Status Monitor or selecting [Cancel] from the pop-up menu displayed when right-clicking the icon, turn the printer off and on again.  
Until restarted, the printer will not operate correctly and this may result in printing errors or abnormal communication.
- The Status Monitor does not support the connection of multiple printers.  
The Status Monitor will not function correctly if run when multiple printers are connected.
- The Status Monitor cannot be used if you run any applications that send control commands to the FUJITSU DL7400Pro or DL7600Pro printer.  
Because the Status Monitor sends and receives commands to check the printer status, conflicts with control commands from other applications may cause a malfunction. In this case, disable the bi-directional function in the printer driver before running the application.
- Do not use the Status Monitor when the FUJITSU DL7400Pro or DL7600Pro printer is in a special mode (such as "HEX Dump").  
In this case, printing may result in a "communication error" or the print job being canceled.
- This Status Monitor does not support use with printers that are shared on the network.
- Status monitoring is not performed via the LAN interface while the printer is idle.

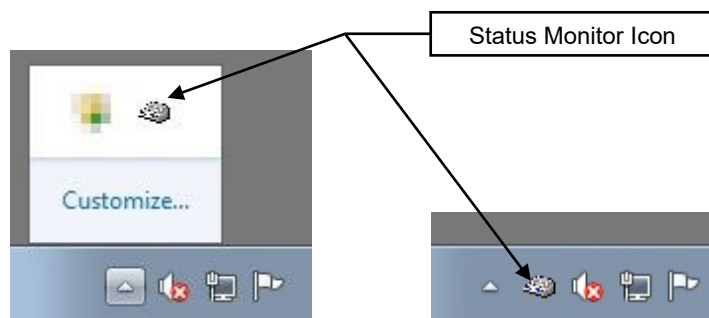
## 3.2 STATUS WINDOW



Display Item	Description	
Title	The format is as follows: <b>[Driver name] [Interface name] Status Monitor</b>	
Message body (Note)	The format is as follows: <b>[Status number Printer status name]</b> <b>Description of the printer status</b> <b>Action to take</b>	
Status icon		Indicates that printing is in progress or the printer is ready to print. (with no error)
		Indicates that printing is in progress or the printer is ready to print. (with a warning message)
		Indicates that an error occurred. (recoverable error)
		Indicates that an error occurred. (unrecoverable error)
		Indicates that an error occurred. (hardware error)
User Name	Name of the user that requests the print	
Document Name	Name of the document being printed (print job name)	
[OK] button	Minimizes the pop-up window as an icon in the task tray.	
[Cancel] button	Click to cancel a displayed print job. The corresponding job is canceled and the status window disappears.	

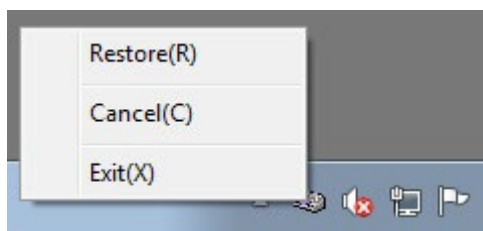
\*1) For a list of descriptions of the status number, printer status name, and printer status, please see "4 States Displayed by Status Monitor."

### 3.3 ICON INDICATION



Display Item	Description
Status icon	Same as the status icons described in the previous page.
Tooltip	Place the mouse pointer over the status icon in the task tray to display a tooltip describing the operation.

### 3.4 MOUSE OPERATION ON ICON



Display Item	Description
Double click the left mouse button	Displays the status as a pop-up.
Click the right mouse button	Displays the pop-up menu. You can select from the following items:
	[Restore (R)] Same as a double left-click.
	[Cancel (C)] Same as the [Cancel] button.
	[Exit (X)] Shuts down the DL7400Pro/DL7600Pro Status Monitor.

---

# CHAPTER 4 STATUSES DISPLAY BY STATUS MONITOR

Status Number	Printer Status Indication	Description of Printer Status
0000	Online	Document printing is available.
0002	Printing.	Printing.
0003	Printing	Another user is already using (Printer Name). Please wait for a while.
0100		Acquiring the current status. Please wait.

Status Number	Printer Status Indication	Description of Printer Status
0300	Offline.	Offline.
0301	Hopper empty.	Paper out. There is no paper on the selected CSF.
0302	Paper end.	Paper out. Paper is empty.
0303	Waiting to remove Cut Sheet.	Waiting to remove Cut Sheet. The ejected paper is existing on the Cut sheet table.
0304	Continuous form back feed error.	Switching paper error. Paper length of back feed is too long when switching paper.
0305	Continuous form back feed error.	Continuous form back feed error. Paper length of back feed is too long.
0306	Paper Insertion error.	Paper Insertion error. Paper cannot be inserted correctly.(Inserted on a skew, set the out of paper set area, Impossible to feed, Unusable width of paper was set.)
0307	Paper Jam at Insertion.	Paper Jam at Insertion. Paper Jam occurred during paper insertion.
0308	Paper Jam at Insertion.	Paper Jam at Insertion. Paper Jam occurred during paper insertion.
0309	Paper Jam at Insertion.	Paper Jam at Insertion. Paper Jam occurred during paper insertion.
0310	Cover Open.	Cover Open. Top cover is open.

Status Number	Printer Status Indication	Description of Printer Status
0402	Paper Jam at Feeding out.	Paper out. Paper is empty.
0403	Paper Jam at Feeding out.	Waiting to remove Cut Sheet. The ejected paper is existing on the Cut sheet table.
0404	Paper Jam at Feeding out.	Switching paper error. Paper length of back feed is too long when switching paper.
0406	Space error at Printing.	Paper Insertion error. Paper cannot be inserted correctly.(Inserted on a skew, set the out of paper set area, Impossible to feed, Unusable width of paper was set.)
0407	Paper thickness error.	Paper Jam at Insertion. Paper Jam occurred during paper insertion.
0408	Paper Jam at Paper feed.	Paper Jam at Insertion. Paper Jam occurred during paper insertion.
0409	Ribbon Jam	Ribbon error occurred.

Status Number	Printer Status Indication	Description of Printer Status
0500	Communication Error.	Communication error occurred. Check the setting of Network, Connection Cable, or Printer power.

Status Number	Printer Status Indication	Description of Printer Status
0700	ROM/RAM Alarm.	Detected ROM/RAM error.
0702	Skew Correction Alarm.	Failed to detect Skew Correction Unit Home Position.
0703	HCPP Alarm.	Failed to detect HCPP Home position.
0704	APTC Alarm.	Failed to detect APTC Home Position.
0705	LRES Alarm.	Failed to detect Print Carrier Home Position.
0707	Fan Alarm.	Detected the error of Fan.
0708	CSF Motor error.	Detected the error by the driver of CSF Motor.
0709	Ribbon Motor error.	Detected the error by the driver of Ribbon Motor.
0710	Overload error.	Detected the error of Power supply voltage.
0711	Low Voltage error.	Detected the error of Power supply voltage.
0712	High Voltage error.	Detected the error of Power supply voltage.
0713	Print Head error.	Detected the error by the driver of Print Head.
0714	LF Motor error.	Detected the error by the driver of LF Motor and Tractor Motor.
0715	SP Motor error.	Detected the error by the driver of Space Motor.

Status Number	Printer Status Indication	Description of Printer Status
1500	Communication Error.	Communication error occurred. Check the setting of Network, Connection Cable, or Printer power.
1520	Communication Error.	Communication error occurred. Check the setting of Network, Connection Cable, or Printer power.
1900	Communication Error.	Communication error occurred.

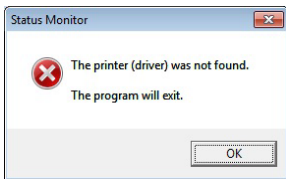
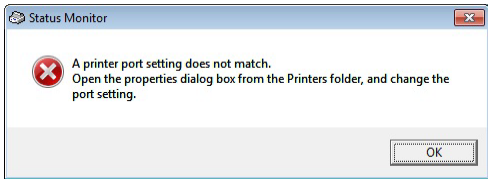
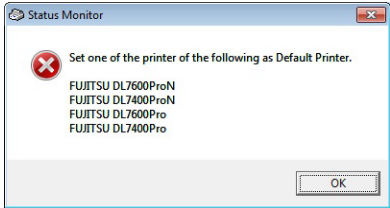
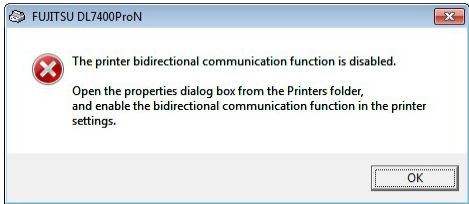
# CHAPTER 5 TROUBLESHOOTING

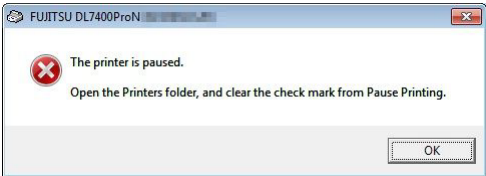
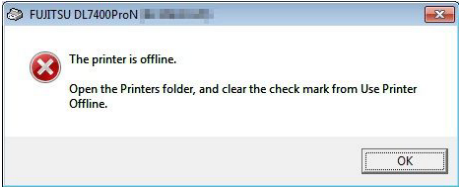
This section describes how to print using the regular operating system print client function.

This section describes problems that may arise when how to resolve these problems.

Notation used in the text

## 5.1 PROBLEMS IN THE STATUS MONITOR

Status Number	Description
	Install the FUJITSU DL7400Pro / DL7600Pro printer driver.
	Open the printer properties. Select the PR-PN4 ports.
	Set the FUJITSU DL7400Pro or DL7600Pro printer as the "Default printer"
	Enable the bi-directional communication function from the printer driver.

Status Number	Description
	Uncheck the "Pause Printing".
	Uncheck the "Use Printer Offline".



