

FUJITSU Software
ServerView Infrastructure Manager V2.2
DHCP/PXE Settings in Using
Profile Management Function / Firmware Management Function

December 2017
FUJITSU LIMITED

Modification History		
Edition	Publication Date	Modification Overview
01	December 2017	First Edition

When executing the following functions with ServerView Infrastructure Manager V2.2 (hereinafter referred to as "ISM 2.2"), use the PXE boot function.

- Using the profile management function to install an OS on a server
- Using the firmware management function to execute offline update of a server or an installed IO card.

To operate PXE correctly, adequate prior preparation for managed target server (node) and network configurations are required. This document provides information on the required operations for PXE boot.

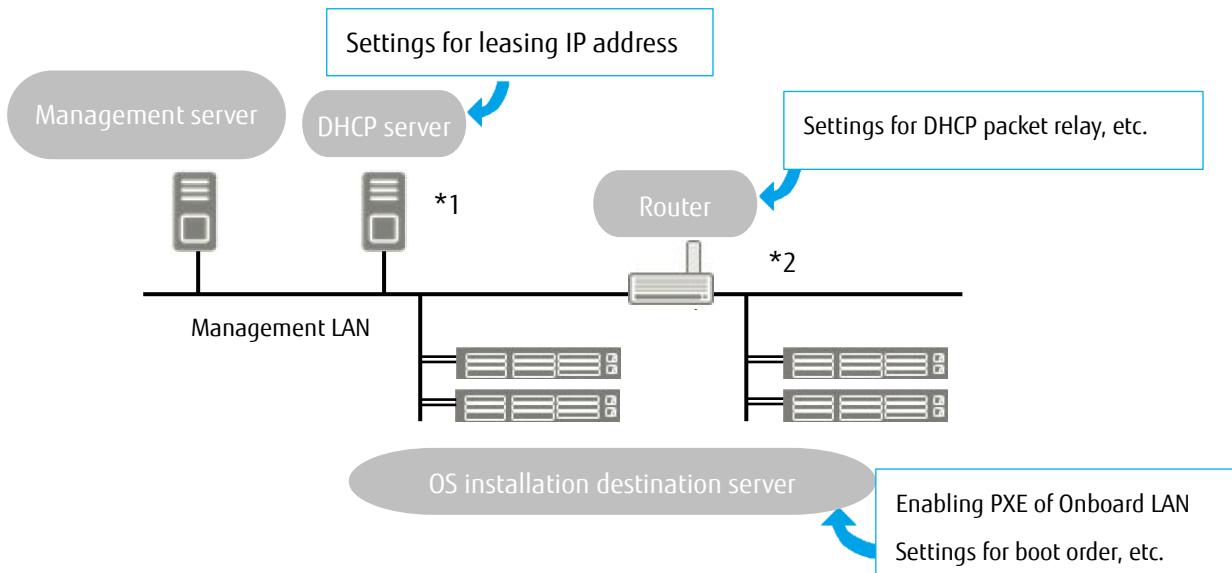
Please note that for profile assignment other than OS installation and execution of firmware online update, the operations described in this document are not required.

For the details and abbreviations used within this document, refer to the manuals below.

- FUJITSU Software ServerView Infrastructure Manager V2.2 User's Manual
- FUJITSU Software ServerView Infrastructure Manager V2.2 Glossary

1. Network Configuration Example

An example of network configuration in using ISM 2.2 and major preparatory operations are described below.



*1: Instead of preparing an external DHCP server, you can use the DHCP server function inside the ISM-VA (management server).

You can choose to use either the external DHCP server or the DHCP server inside of the managed server

*2: If the network segment is not split, a router is not required.

2. Required preparatory operations

■ PRIMERGY (Management Target Server)

You can use the onboard LAN port (*1) or LAN card for the PXE boot function.

Change BIOS settings as required and enable PXE boot from the LAN port. (*2)

(*1) Depending on the model of PRIMERGY, it may be described as "Dynamic LoM."

(*2) You can specify the LAN port in the "PXE boot port" settings of each node.

Presetting:

- Configure so that the LAN port and PXE function are enabled.

For onboard, these settings items are set as Enabled in factory shipment. Reset the settings items to Enabled if they have been changed to Disabled. For LAN cards, refer to the manuals, etc., of the respective cards.

- If PXE boot is set to Enabled for multiple network ports, check the settings of BIOS boot order and set the boot order so that the highest priority of ISM is given to the LAN port used for PXE boot in the network ports.

■ DHCP Server/Router

You can either enable the DHCP function in the ISM-VA or operate the DHCP server in the same network segment as the management server and set so that the appropriate IPv4 address can be leased to the PXE boot LAN port. Note that the lease period must be set equal to or greater than 60 minutes.

Ex.) The scope settings when ISM-VA is connected with 192.168.1.100/24

Lease range: 192.168.1.128 to 192.168.1.159

Lease period: 8 days

If the managed target server is connected with the network of a different segment, set up a router so that the DHCP packets, etc., required for PXE boot can be transferred to each other between the segments.

Likewise, set up the variety of ports used by ISM 2.2 so that their communication is available.

■ ISM 2.2 (Management Server)

There is no specific setting for PXE boot. Follow the User's Manual to execute the procedures below.

- Allocating virtual disk(s) to overall ISM-VA/allocating virtual disk(s) to user groups
- Importing OS installation DVD (For OS installation)
- Importing ServerView Suite Update DVD (For Office update)
- Importing ServerView Suite DVD
- Registering management target PRIMERGY in ISM 2.2
 - * When registering in ISM 2.2, register the iRMC user with "OEM" or "Administrator" authorization.