

**FUJITSU Software**

**ServerView Infrastructure Manager Plug-in for  
VMware vCenter Server 1.1**



**Setup Guide**

**For vCenter Server 6.5**

**CA92344-1955-01**

**Aug, 2017**

## Preface

---

### Purpose

This Setup Guide describes the installation procedure, precautions on usage and information for FUJITSU Software ServerView Infrastructure Manager Plug-in for VMware vCenter Server 1.1 (hereafter referred to as “ISM Plug-in”).

### Index

1. [Product Summary](#)
2. [Contents](#)
3. [Software Requirements](#)
4. [Installation Procedures](#)
5. [Folder Structure after Installation](#)
6. [How to utilize ISM](#)
7. [Uninstallation Procedure](#)
8. [Precautions](#)
9. [Latest Information](#)

### Intended Readers

This guide is designed for readers who have sufficient knowledge on hardware and software, such as system administrators, network administrators, facility administrators and related service providers.

### Notation in this guide

Notation

Keyboard

Keystrokes with no printed characters are displayed by key icons, such as [Enter] or [F1]. For example, [Enter] means press key labeled [Enter].

Multiple lines

Thick multiple lines are ruled before the important information for each procedure as follows:

**Point**

---

---

Describes important information for each subject.

## Note

---

---

Describes subjects where attention is necessary.

Variables: <xxx>

Represents variables that can be replaced by numerical values or text strings in accordance with the environment.

Example: <IP address>

## Abbreviations

In this guide, the following abbreviations may be used.

Product Name	Abbreviation
FUJITSU Software ServerView Infrastructure Manager	ISM
FUJITSU Software ServerView Infrastructure Manager Plug-in for VMware vCenter Server	ISM Plug-in
VMware vCenter Server	vCenter

## Terms

For the major terms and abbreviations used in this manual, see "ServerView Infrastructure Manager V2.1 Glossary."

## High Risk Activity

The Customer acknowledges and agrees that the Product is designed, developed and manufactured as contemplated for general use, including without limitation, general office use, personal use, household use, and ordinary industrial use, but is not designed, developed and manufactured as contemplated for use accompanying fatal risks or dangers that, unless extremely high safety is secured, could lead directly to death, personal injury, severe physical damage or other loss (hereinafter "High Safety Required Use"), including without limitation, nuclear reaction control in nuclear facility, aircraft flight control, air traffic control, mass transport control, medical life support system, missile launch control in weapon system. The Customer shall not use the Product without securing the sufficient safety required for the High Safety Required Use. In addition, Fujitsu (or other affiliate's name) shall not be liable against the Customer and/or any third party for any claims or damages arising in connection with the High

Safety Required Use of the Product.

**Trademarks**

Microsoft, Windows, Windows Vista, Windows Server, Hyper-V, Active Directory, and the titles or names of other Microsoft products are trademarks or registered trademarks of Microsoft Corporation in the United States and other countries.

VMware, VMware logo, VMware ESXi, VMware SMP, and vMotion are trademarks or registered trademarks of VMware, Inc. in the United States and other countries.

All other company and product names are trademarks or registered trademarks of the respective companies.

All other products are owned by their respective companies.

**Copyright**

Copyright Fujitsu Limited 2017 All rights reserved.

This manual shall not be reproduced or copied without the permission of Fujitsu Limited.

## 1. Product Summary

---

This plug-in software is designed to extend the user interface of VMware vCenter Server (hereafter referred to as "vCenter") to enable the use of the functions of FUJITSU Software ServerView Infrastructure Manager (hereafter referred to as "ISM") from vCenter console to integrate the infrastructure management. This plug-in software enables you to operate ISM directly from the vSphere Web Client.

## 2. Contents

---

This plug-in software is composed of the following five (5) files:

- ISMvCenter\_INSTALL.exe
- Readme.txt
- Readme\_en.txt
- Setup Guide (Japanese)
- Setup Guide (\*this document)

## 3. Software Requirements

---

Applications that must be installed:

- FUJITSU Software ServerView Infrastructure Manager V2.0 and later
- VMware vCenter Server V.6.5

---

### Note

---

---

Because this plug-in does not support the HTML5 version, make sure to select the Flash version of vCenter6.5.

---

---

Minimum Browser Version Requirements:

- Microsoft Internet Explorer 10.0.19 or later
- \* For the 3D view functions of ISM, you must install the latest version; 11.0.19 or later
- Mozilla Firefox 34 or later

Google Chrome does not support ISM Plug-in (as of Feb, 2017).

Please refer to the User's Manual of ISM for more information.

## 4. Installation Procedures

---

This section explains installation procedures of ISM Plug-in into vCenter.

Please execute the following four (4) steps:

- 4.0 [Before installation](#)
  - 4.1 [Execute the installation file](#)
  - 4.2 [Register the necessary information in ISM Plug-in](#)
  - 4.3 [Import the SSL Server Certificates](#)
  - 4.4 [How to use ISM Plug-in](#)
- 

### 4.0 Before installation

---

#### Note

---

---

- The version of OpenSSL in vCenter Server must be compatible with OpenSSL in ISM. Without compatibility, it does not work properly. Kindly check the version of vCenter Server before the installation. The versions of Open SLL must be version 1.0.x.  
Ex.) 1.0.1a,1.0.2a....etc
  - Uninstall the ISM Plug-in (version 1.0) in advance if it is already applied in ISM.
- 
- 

### 4.1 Execute the install file

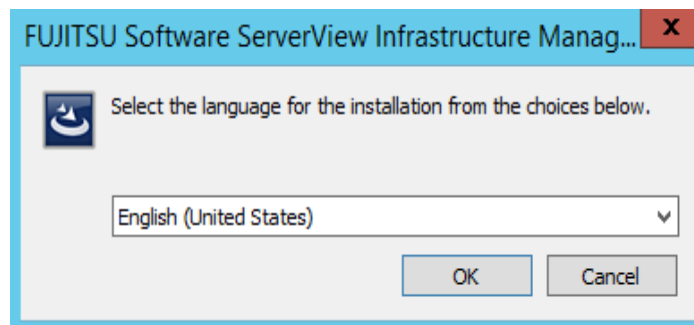
---

4.1.1 Double click [ISMvCenter\_INSTALL.exe] and open the file.

---

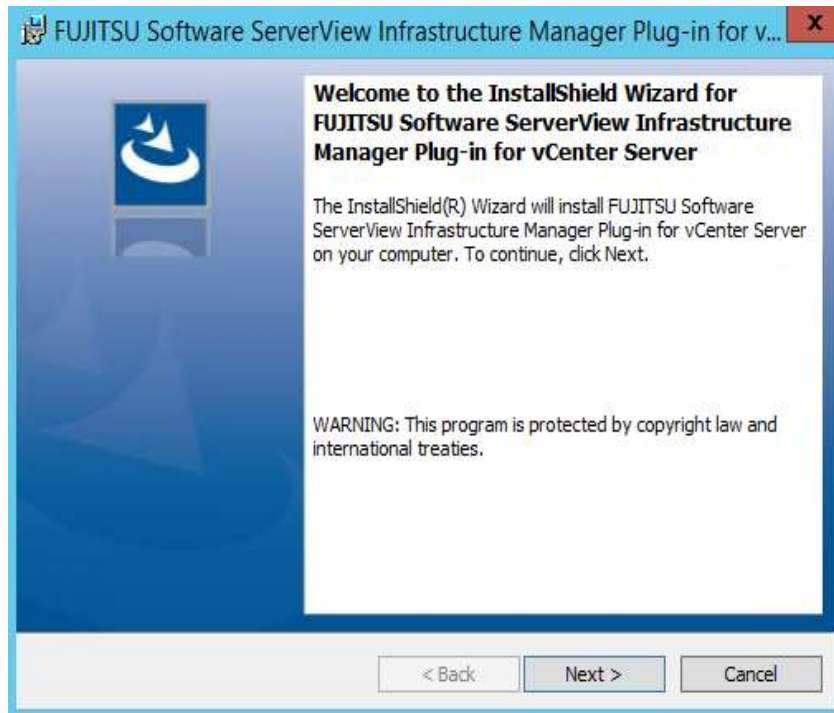
4.1.2 Select language for the installation procedures.

---



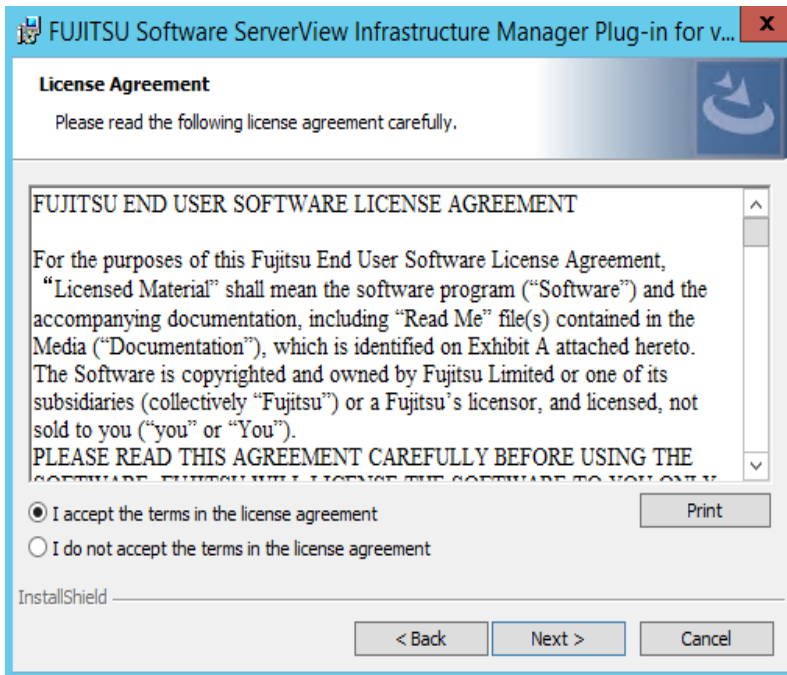
4.1.3 When the preparations are completed, the installation wizard is displayed. Click [Next].

---

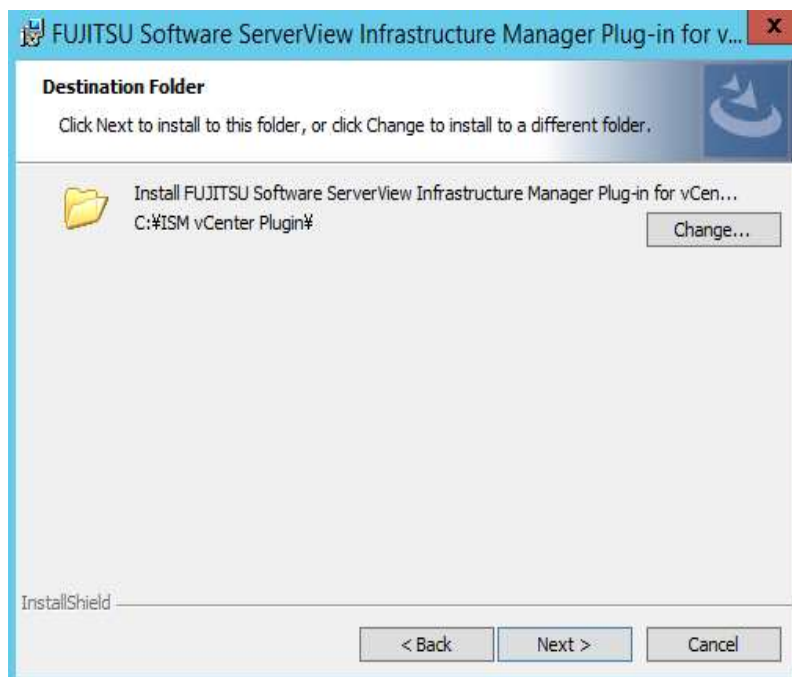


4.1.4 The EULA is displayed. Read the contents and select [I accept the terms].

---



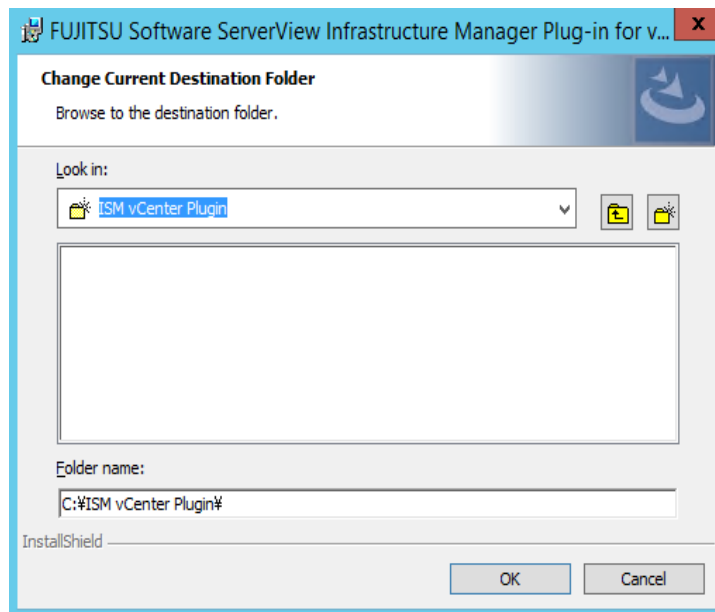
4.1.5 Specify the installation destination. To change the destination, click [Change].





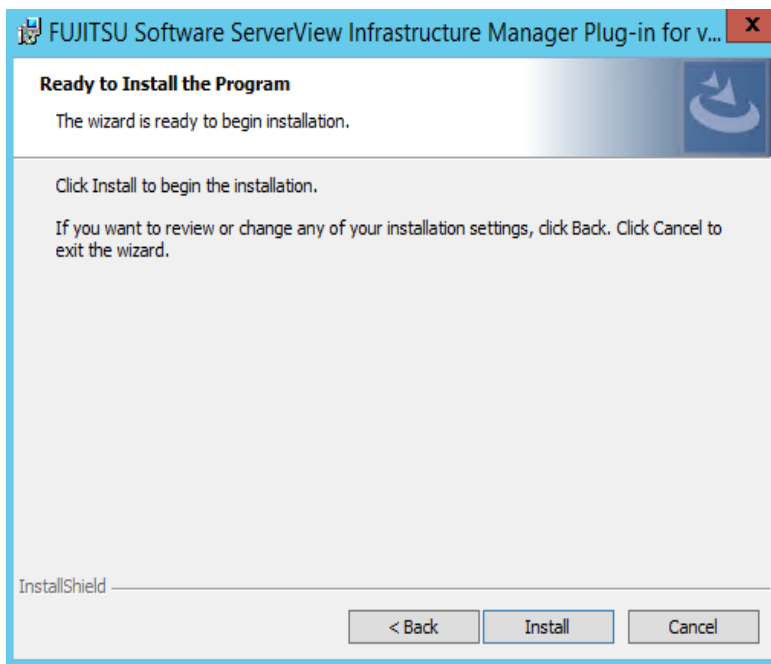
4.1.6 Specify the designated folder and click [OK].

---



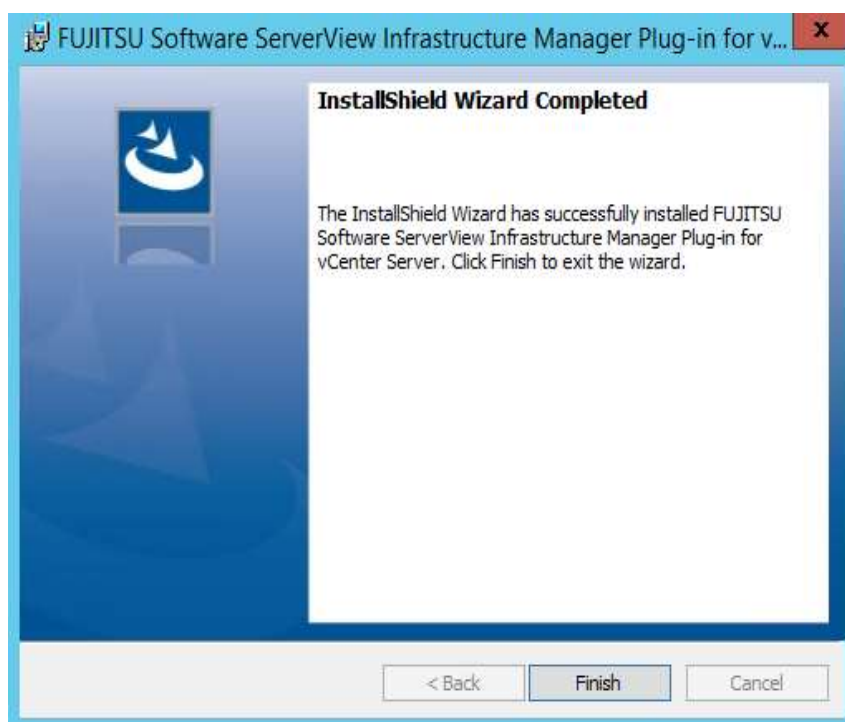
4.1.7 Click [Install] and the installation starts automatically.

---



4.1.6 After the installation is completed, the message below is displayed. Click [Finish].

---



4.1.7 Restart the server OS where the ISM plug-in is installed.

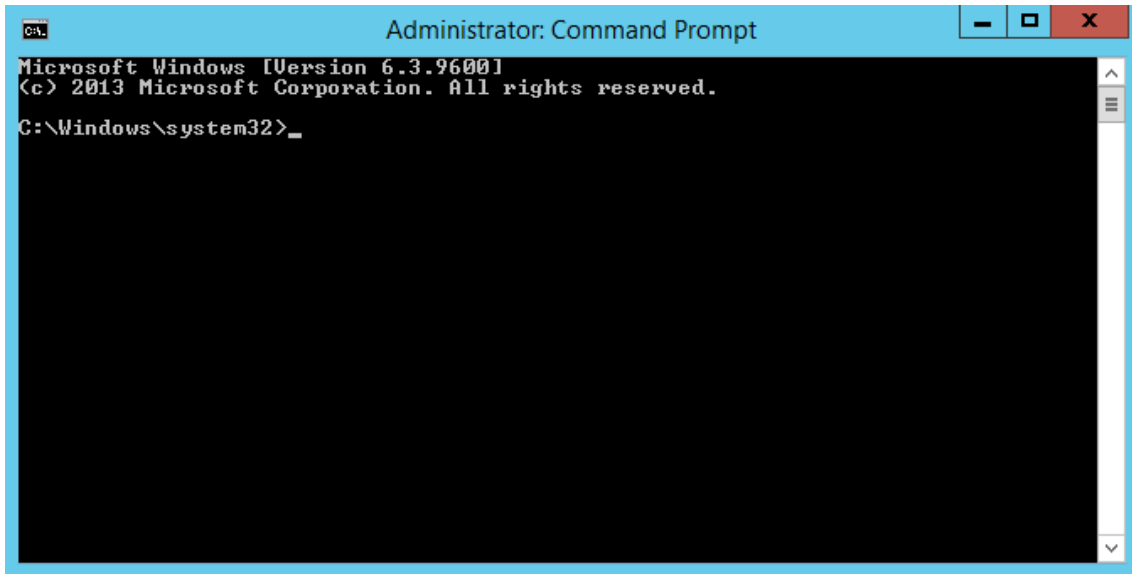
## 4.4 Register the necessary information in ISM Plug-in

---

4.4 Register the necessary information in ISM Plug-in from command prompt.

4.4.1 Right click the Start menu and select [Command Prompt (Admin)].

---



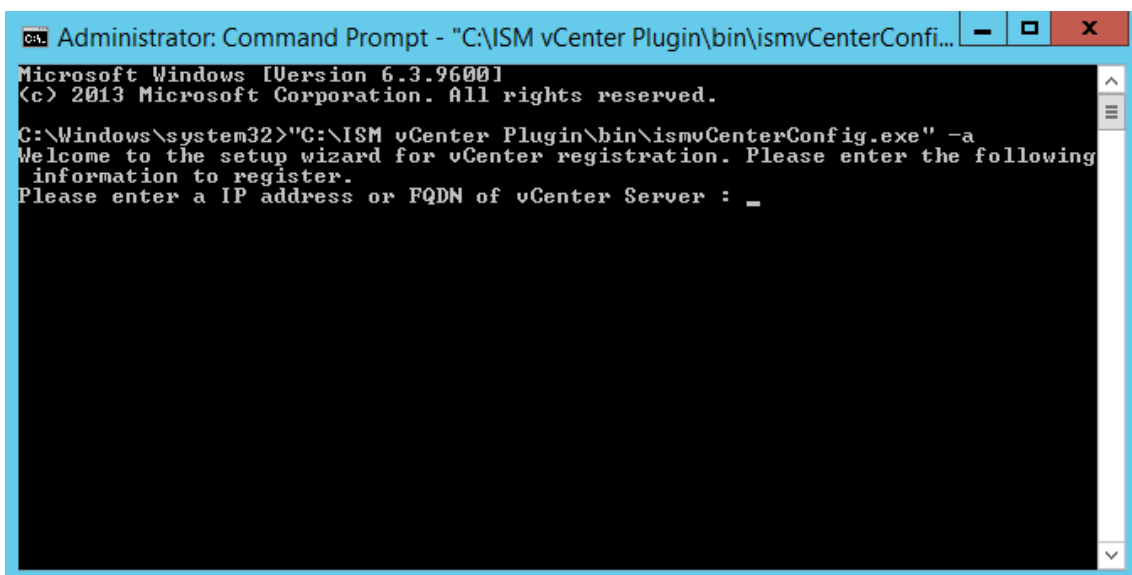
```
Administrator: Command Prompt
Microsoft Windows [Version 6.3.9600]
(c) 2013 Microsoft Corporation. All rights reserved.
C:\Windows\system32>_
```

4.4.2 Execute the following command.

---

<Install destination folder name>\bin\ismvCenterConfig.exe -a

Example:



```
Administrator: Command Prompt - "C:\ISM vCenter Plugin\bin\ismvCenterConfi...
Microsoft Windows [Version 6.3.9600]
(c) 2013 Microsoft Corporation. All rights reserved.
C:\Windows\system32>"C:\ISM vCenter Plugin\bin\ismvCenterConfig.exe" -a
Welcome to the setup wizard for vCenter registration. Please enter the following
information to register.
Please enter a IP address or FQDN of vCenter Server : _
```

#### 4.4.3 Follow the directions and enter the information below.

---

```
Welcome to the setup wizard for vCenter registration. Please enter the following
information to register.
Please enter a IP address or FQDN of vCenter Server : <IP address or FQDN for vCenter>
Please enter a valid user name of vCenter Server : <administrator@vsphere.local>
Please enter a password for the user name : <*****>
Registration completed successfully.

C:\Windows\system32>
```

#### Point

---

- Execute the following command to check the registered information.

```
<Install destination folder name>\bin\ismvCenterConfig.exe -l
Picked up JAVA_TOOL_OPTIONS: -Xms32M -Xmx128M
vCenter IP address or FQDN=<IP Address or FQDN for vCenter> Account=<administrator@vsphere.local>
```

- To correct or replace the server information, delete the information using the following command. Then register the information again.

```
<Install destination folder name>\bin\ismvCenterConfig.exe -d <User name for vCenter>

Unregistration completed successfully.
```

---

1. Register the ISM server information in ISM Plug-in.

```
<Install destination folder name>%bin%ismServerConfig.exe -a
Welcome to the setup wizard for ISM(ServerView Infrastructure Manager). Please e
nter the following information to register.
Please enter a IP address or FQDN of ISM Server : <192.186.1.100>
Please enter a Port Number of ISM Server : <25566>
Please enter a valid user name of ISM Server : <administrator>
Please enter a password for the user name : <****>

Please enter a valid user name of vCenter that correspond to user name of ISM Se
rver: <administrator@vsphere.local>

Registration completed successfully.

C:%Windows%system32>
```

## Point

---

- Execute the following command to check the registered information.

```
<Install destination folder name>%bin%ismServerConfig.exe -l
ISM IP address or FQDN=<192.168.1.100> ISM Port=<25566> ISM Account=<administrator>
vCenter Account=<administrator@vsphere.local>
```

- To correct or replace the server information, delete the information using the following command. Then register the information again.

```
<Install destination folder name>%bin%ismServerConfig.exe -d <User name for
ISM>
Unregistration completed successfully.
```

---

## 4.5 Import the SSL Server Certificate

---

### 4.5.1 Import the SSL Server Certificate

#### Note

---

---

It is necessary to import the SSL Server Certificate in advance into the devices which should be connected to vCenter. \*\*Without Certificate, an error message appears.

---

---

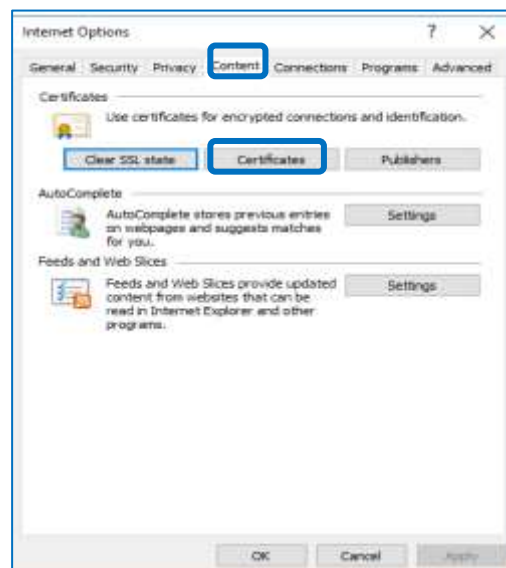
1. Prepare the SSL Server Certificate.

#### Point

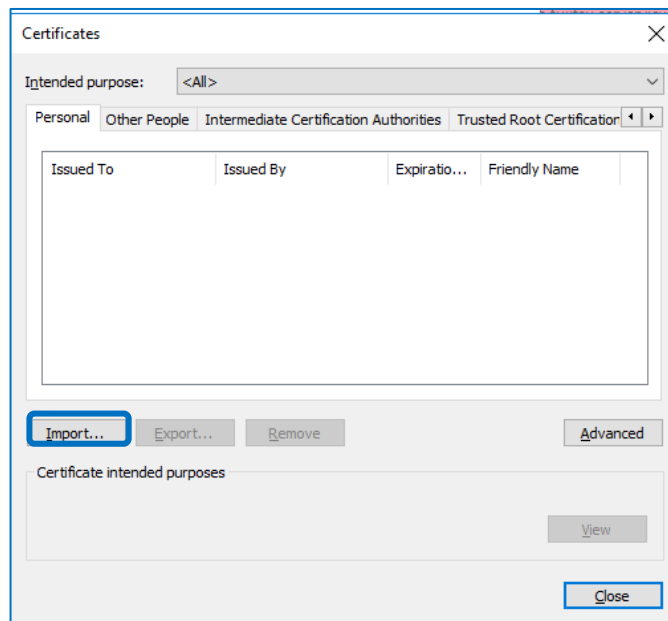
---

- Prepare the SSL Server Certificate according to Chapter 4.6.1 “Deploying SSL Server Certificates” in User’s Manual of ISM.  
Make sure to complete the certificate import on the intended devices.
  - For the use of FireFox, refer to Chapter 4.1 “Startup of ISM GUI” in Start Guide of ISM to complete the certificate import.
- 
- 

2. From the browser on the intended devices, select [Internet options] under [Settings].
3. Select [Contents] and click [Certificates].



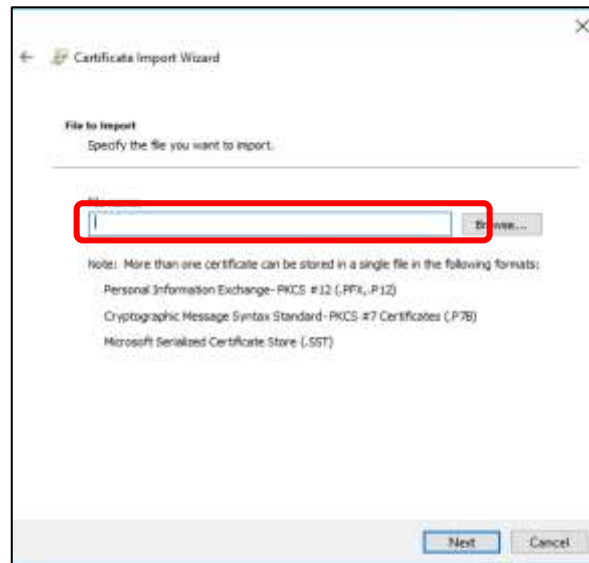
4. Click [Import] and launch the import wizard.



5. The import wizard appears. Click [Next].

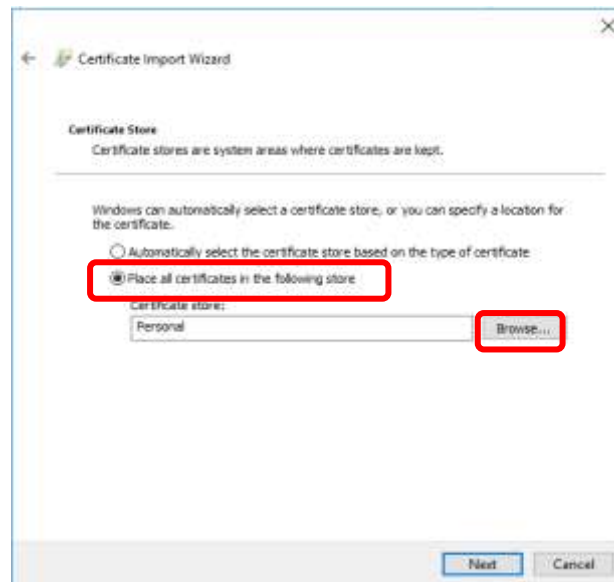


6. Select the downloaded file.



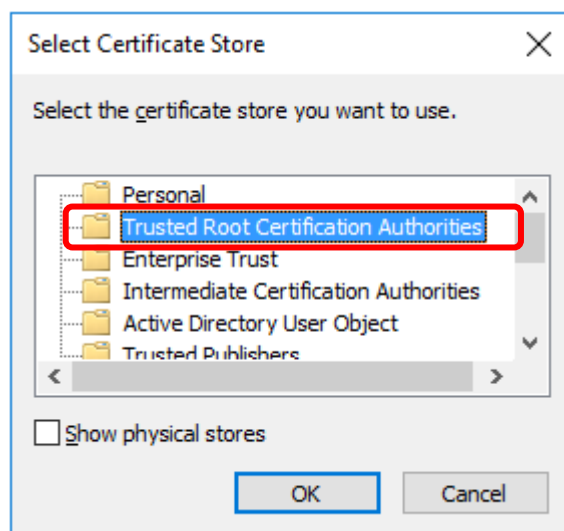
7. Click [Next].

8. Check the [Place all certificates in the following store] box and click [Browse].



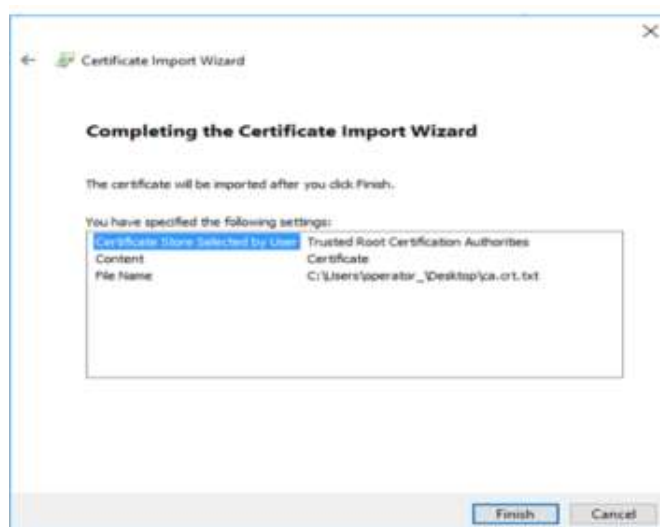


9. Select [Trusted Root Certification Authorities] and click [OK].

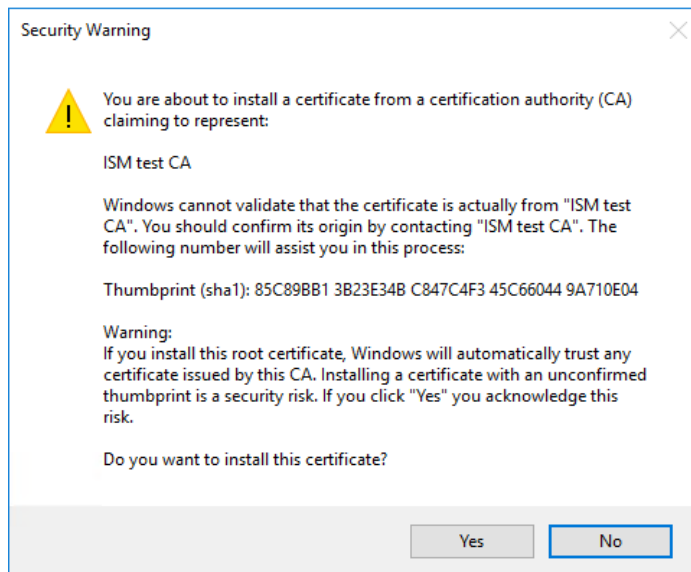


10. Click [Next].

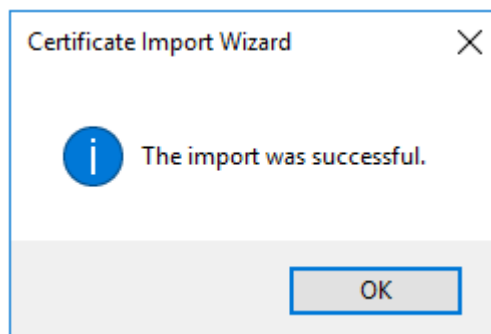
11. Click [Finish].



- Click [Yes] on the security alert dialog.



- The message [The import was successful] appears. Click [OK] to close the dialog box.



- Login to ISM and confirm that there are no errors.

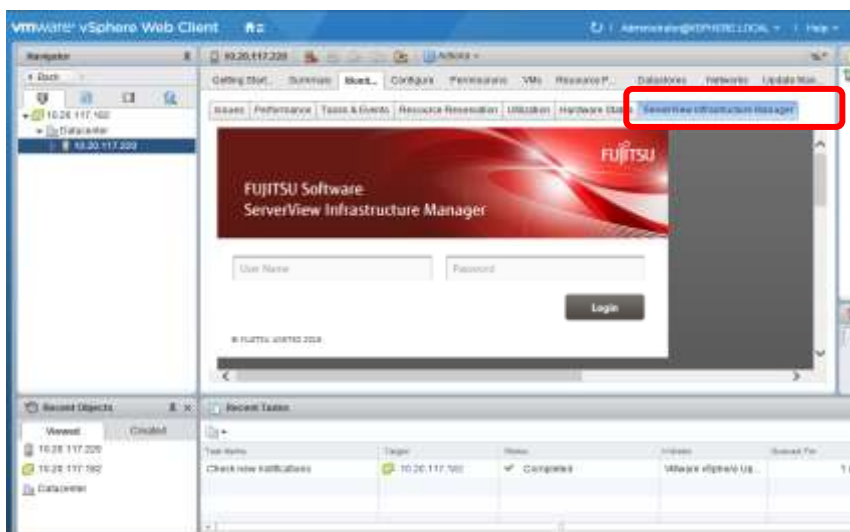
## 4.6 How to use ISM Plug-in

### 4.6.1 How to use ISM Plug-in

1. Start vSphere Web Client from your device.
2. Click [Hosts and Clusters], or select <designated node> under [Datacenter].



3. Click the [Monitor] tab and select [ServerView Infrastructure Manager].  
The login page is displayed in the main pane.



e

## Note

---

---

- It is necessary to import the SSL Server Certificates in advance into the devices which should connect to vCenter. Please refer to [section 4.5](#) in this setup guide.
- Depending on your using internet browser, the ISM login page may not be displayed correctly due to security settings. Please try the following procedures and logging in to ISM again:

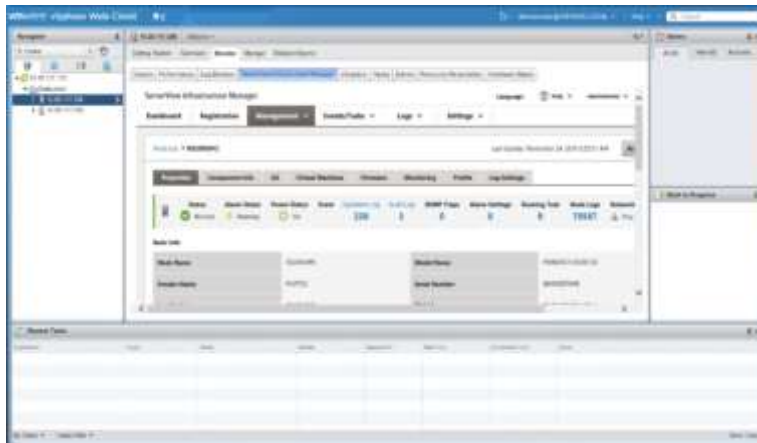
(Example: Microsoft Internet Explorer)

[Internet Options] – [Security] – [Local intranet] – [Sites] – [Advanced] -  
Add the ISM's URL

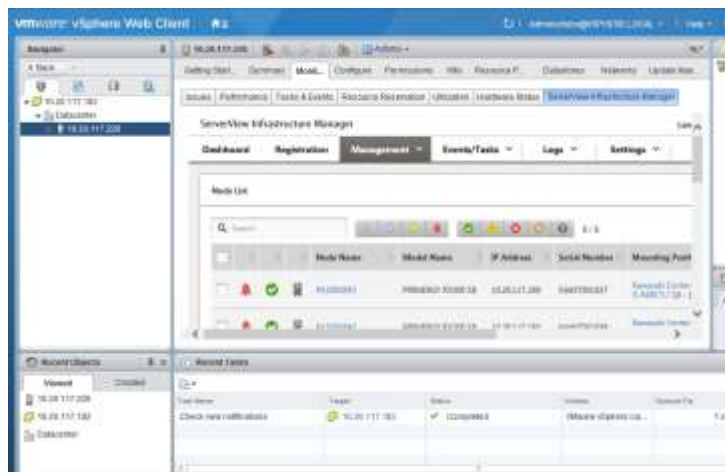
---

---

4. After logging in, the following information is displayed according to the object:
- For the registered node in ISM: Node Information



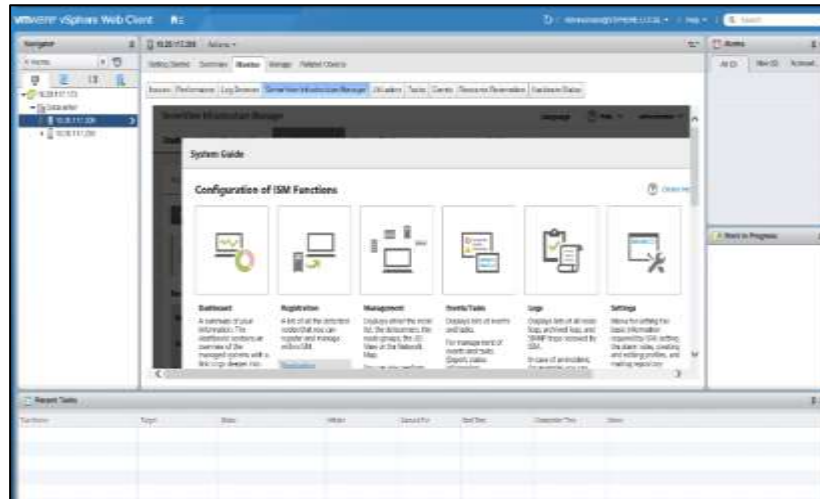
- For the unregistered node in ISM/ the datacenter or cluster: Node List



## Point

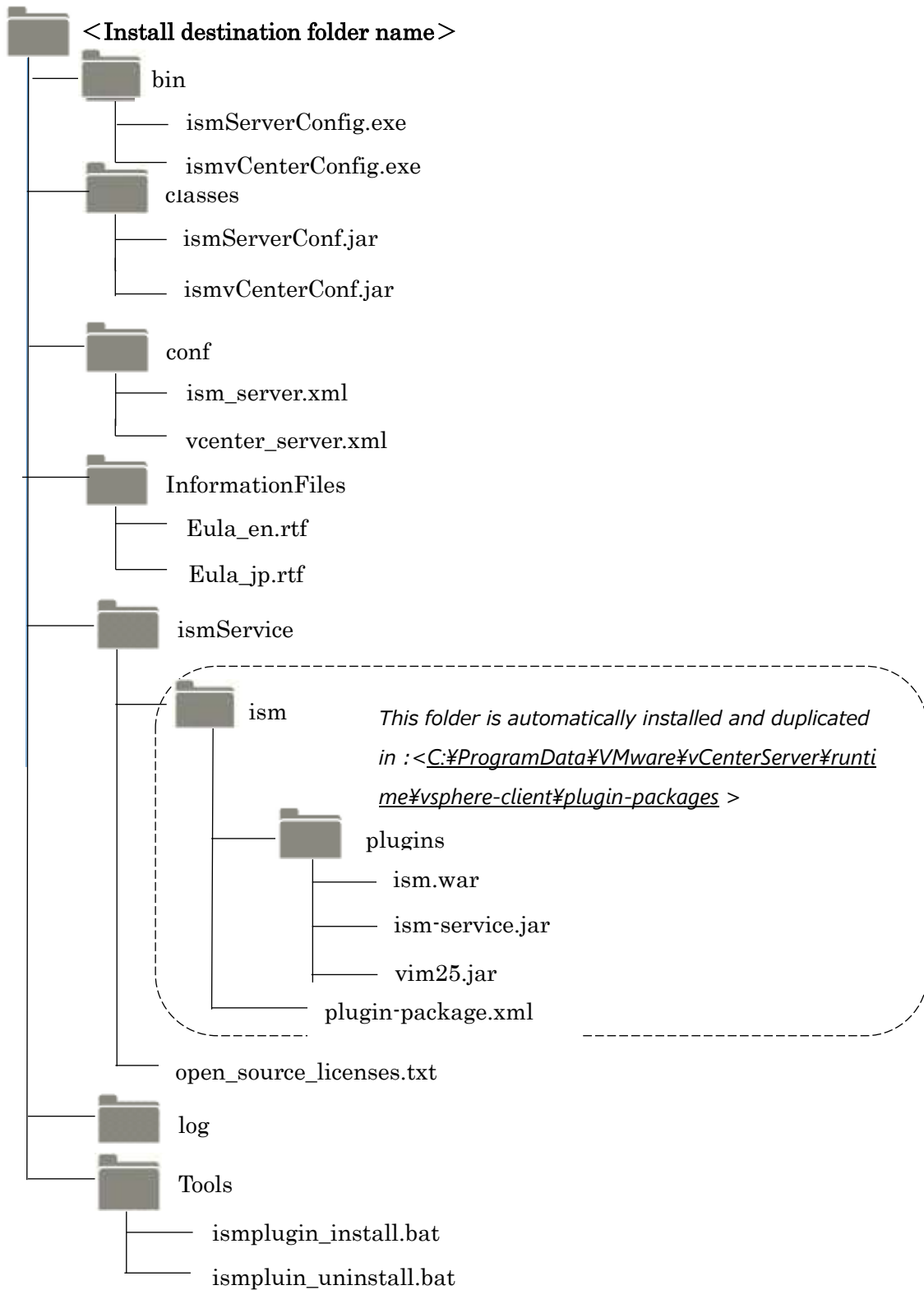
---

If the ISM system guide dialog appears, scroll down to the bottom right and click [Close]. Change the settings from [Help]-[System Guide] in ISM.



## 5. Folder Structure after Installation

The following is the folder structure after installation.



## **6. How to utilize ISM**

---

Please refer to the User's Manual of ISM for how to utilize each function of ISM.

## **7. Uninstallation Procedures**

---

Go to the control panel and find "ServerView Infrastructure Manager Plug-in for VMware vCenter Server" from "Program and Features". Right click and select "Uninstall." Restart the server OS where the ISM plug-in is deleted.

## **8. Precautions**

---

8.1 NOTE: To use ServerView Infrastructure Manager Plug-in for vCenter, purchase and installation of ISM is required. Without installing ISM, this plug-in does not work properly. Refer to the ISM User's Manual for more details.

8.2 NOTE: To use ServerView Infrastructure Manager Plug-in for vCenter, purchase and installation of vCenter is required. Without installing vCenter, this plug-in does not work properly. Refer to the product guides of VMware for more details.

## **9. Latest Information**

---

For the latest information about ISM and ISM Plug-in, please contact your local support.