

<p>FUJITSU Software</p> <p>ServerView Infrastructure Manager V2.1</p> <p>Pre-settings for Virtual Resource Management Function</p>

September 2017
FUJITSU LIMITED

Modification History		
Edition	Publication Date	Modification Overview
01	July 2017	First Edition
02	September 2017	Corrected the terms

ServerView Infrastructure Manager V2.1 is capable of monitoring a virtual infrastructure by using virtual resource management function.

This document provides information about pre-settings required for virtual resource management function.

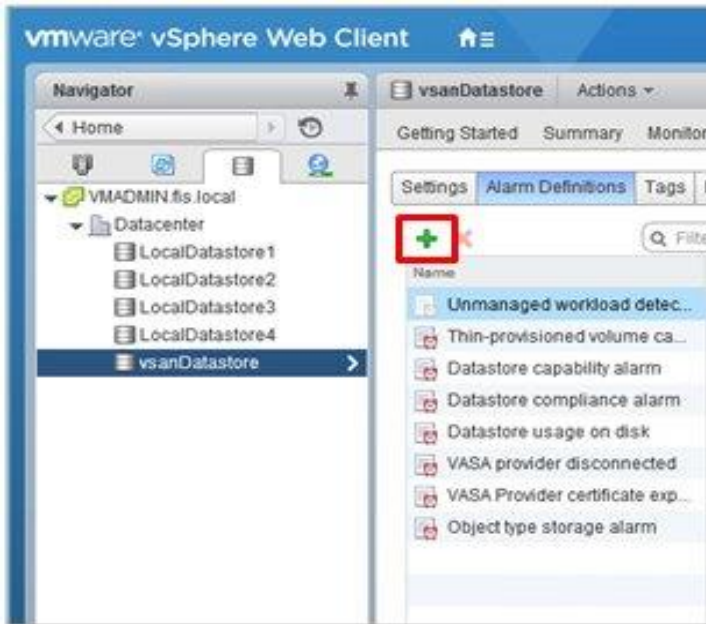
For the details and abbreviations used within this document, refer to the manuals below.

- FUJITSU Software ServerView Infrastructure Manager V2.1 User's Manual
- FUJITSU Software ServerView Infrastructure Manager V2.1 Glossary

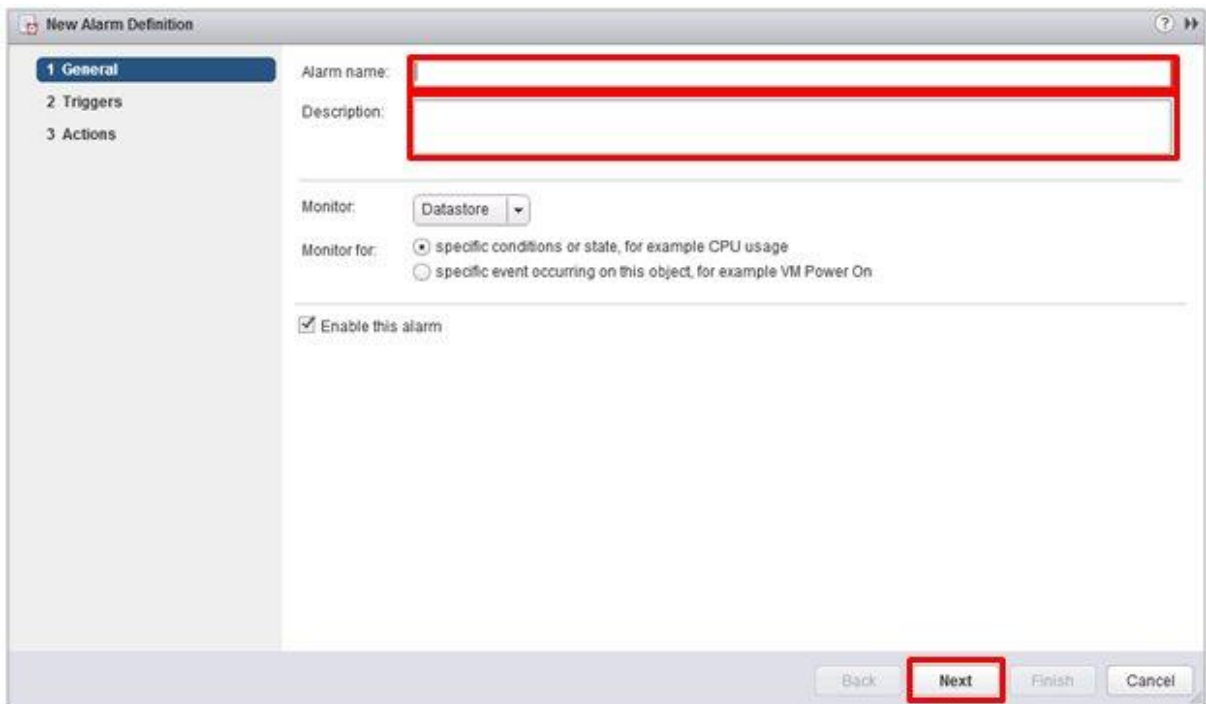
■ Pre-settings for VMware VSAN

VMware VSAN alarm definition is required to enable the detection of VSAN datastore errors caused by a network disconnection between the VSAN hosts. The procedure below describes how to add VSAN alarm definitions.

1. Open the vSphere Web Client screen, from [Home] - select storage and select the created VSAN datastore.
From the [Management] tab (or from the [Monitor] tab and click [Issues] in case of vCenter Server Appliance 6.5), select [Alarm Definitions] on the right side of the displayed screen and select [+].

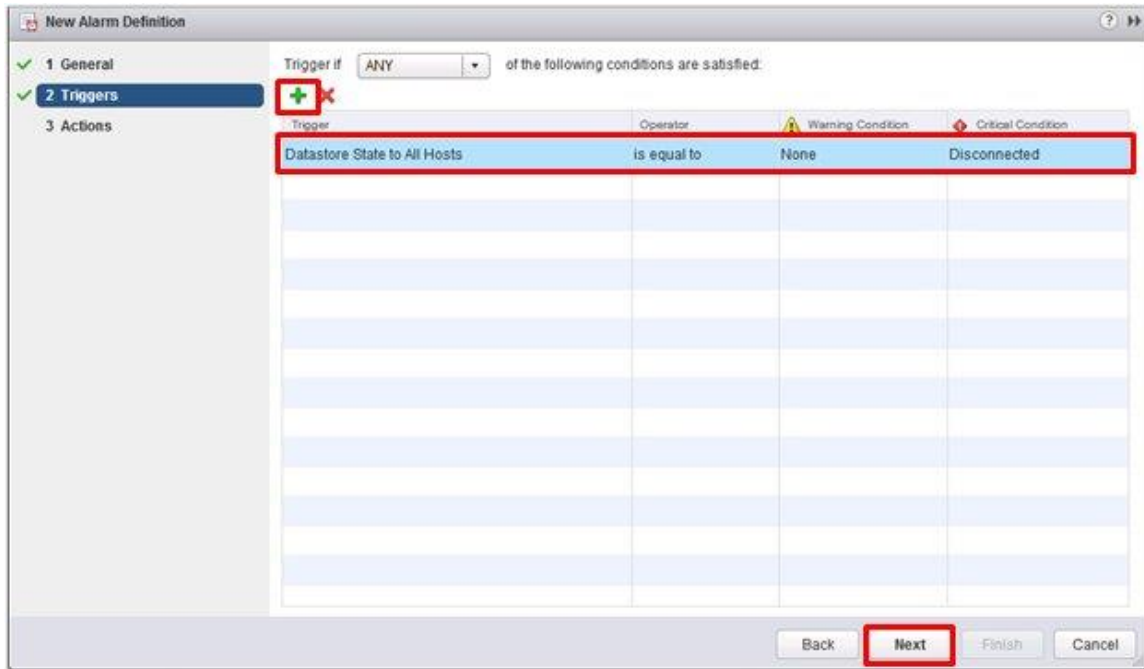


- When the wizard screen is displayed, fill in [Alarm name] and [Description] as in the following chart, and then select the [Next] button.



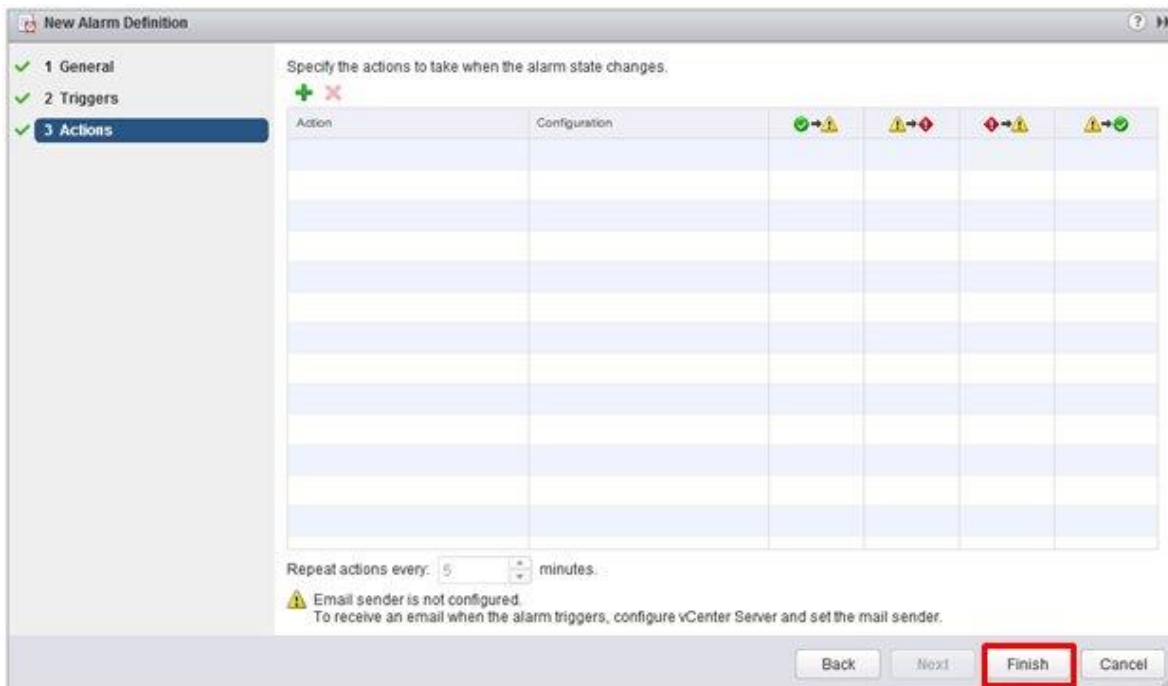
Item	Content
Alarm Name	Network disconnection between hosts
Description	Alarm when the network between the hosts is disconnected.

3. Select the [+] in the following screen, then set the items as in the following chart and select the [Next] button.

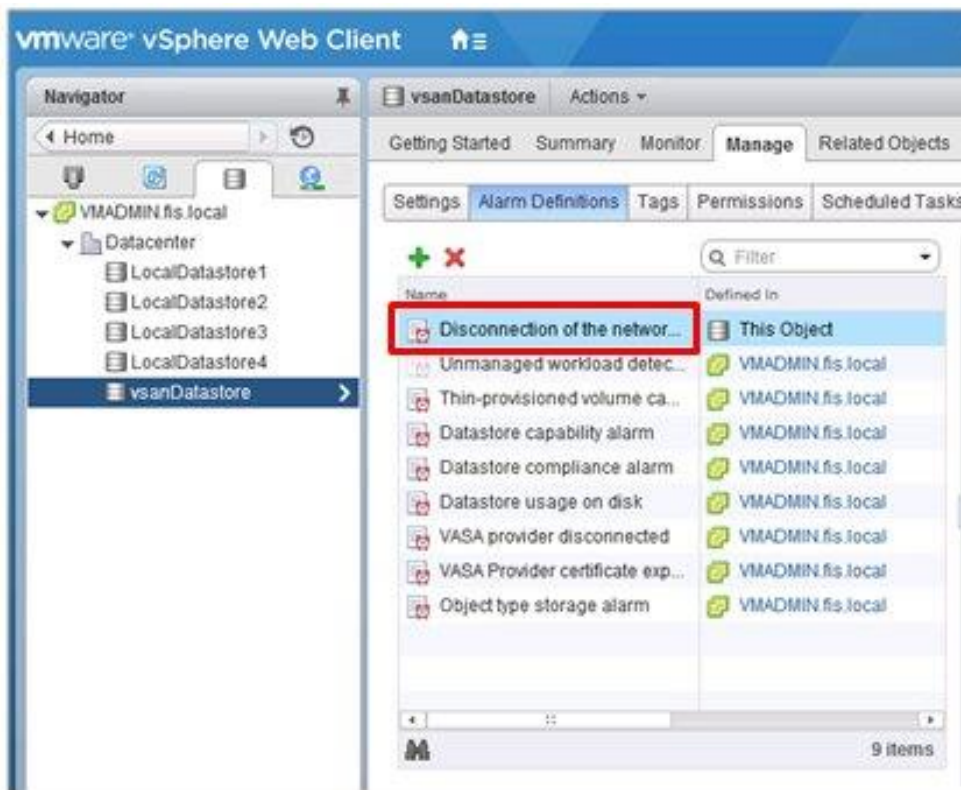


Item	Parameter
Trigger	Datastore Status to All Hosts
Operator	is equal to
Warning requirements	None
Maximum requirements	Disconnected

4. No need to set Actions. Select the [Finish] button.



5. The new definition is added to the alarm definitions when completed.



■ Pre-settings for Storage Spaces Direct

For operation management of Microsoft Storage Spaces Direct, it is required to enable CredSSP authentication for all the nodes configure the memory storage pools, and settings for OS monitoring for ISM-VA. Execute it using the following procedure.

Settings for ISM-VA

Execute the settings for OS monitoring from ISM. For the setting procedure, refer to the "Section 2.1 of Setting procedures for Windows" in "FUJITSU Software ServerView Infrastructure Manager V2.1 Settings for Monitored OSES and Cloud Management Software."

Settings for nodes

Enable CredSSP authentication for all the nodes configure the memory pools.

Note

If you do not execute these settings, the virtual resource management function cannot be used for Storage Spaces Direct.

The nodes configure the memory pools can be checked from the Server Manager and the Failover Cluster Manager.

1. Log in to the node as a user with domain administrator rights and start PowerShell.
2. Execute the following command.

```
Enable-WSManCredSSP -Role client -DelegateComputer <Target node (Computer) name >
```

Wild card (*) can be used to specify all of the computer names in a domain.

Example:

```
Enable-WSManCredSSP -Role client -DelegateComputer *.pfdomain.local
```

3. Ad then, execute the following command.

```
Enable-WSManCredSSP -Role server
```