



FUJITSU Software

ServerView Infrastructure Manager V2.0

Start Guide

CA92344-1472-02
March 2017

Preface

Purpose

This manual provides overviews of the functions and installation procedures, and describes the first steps for using FUJITSU Software ServerView Infrastructure Manager (hereafter referred to as ISM). ISM is software for simpler and more efficient operation and management of a multitude of ICT devices that are running in datacenters and server rooms.

Related Manuals

Manual Name	Notation in this Manual	Description
FUJITSU Software ServerView Infrastructure Manager V2.0 User's Manual	ServerView Infrastructure Manager V2.0 User's Manual	This manual describes the ISM functions, the installation procedure, and methods for operation and troubleshooting. It allows you to quickly grasp all functions and all operations of ISM.
FUJITSU Software ServerView Infrastructure Manager V2.0 Start Guide	ServerView Infrastructure Manager V2.0 Start Guide	This manual describes an overview of the functions and a workflow for installing ISM. It allows you to quickly grasp the procedures for installing ISM.
FUJITSU Software ServerView Infrastructure Manager V2.0 Operating Procedures	ServerView Infrastructure Manager V2.0 Operating Procedures	This manual describes the operating procedures for the initial setup and daily operation (monitoring of nodes, server setups, installation of OSES on servers, updating of server firmware) of ISM.
FUJITSU Software ServerView Infrastructure Manager V2.0 Glossary	ServerView Infrastructure Manager V2.0 Glossary	The glossary provides definitions of the terminology that you need to understand for using ISM.

Together with the manuals mentioned above, you can also see the latest information about ISM by accessing your local support.

For the respective hardware products for management, see the manuals of the relevant hardware.

For PRIMERGY, see "ServerView Suite ServerBooks" or the manual pages for PRIMERGY.

<http://manuals.ts.fujitsu.com>

Intended Readers

This manual is intended for readers who consider using the product for comprehensive management and operation of such ICT equipment and possess basic knowledge about hardware, operating systems, and software.

Notation in this Manual

Notation

Keyboard

Keystrokes that represent nonprintable characters are displayed as key icons such as [Enter] or [F1]. For example, [Enter] means press key labeled "Enter"; [Ctrl]+[B] means hold down the key labeled "Ctrl" or "Control" and then press the B key.

Symbols

Items that require your special caution are preceded by the following symbols.



.....
Describes the content of an important subject.
.....

Note

Describes an item that requires your attention.

Variables: <xxx>

Represents variables that require replacement by numerical values or text strings in accordance with the environment you are using.

Example: <IP address>

Abbreviation

You may see the following abbreviations in this manual.

Official name	Abbreviation	
Microsoft(R) Windows Server(R) 2016 Datacenter	Windows Server 2016 Datacenter	Windows Server 2016
Microsoft(R) Windows Server(R) 2016 Standard	Windows Server 2016 Standard	
Microsoft(R) Windows Server(R) 2016 Essentials	Windows Server 2016 Essentials	
Microsoft(R) Windows Server(R) 2012 R2 Datacenter	Windows Server 2012 R2 Datacenter	Windows Server 2012 R2
Microsoft(R) Windows Server(R) 2012 R2 Standard	Windows Server 2012 R2 Standard	
Microsoft(R) Windows Server(R) 2012 R2 Essentials	Windows Server 2012 R2 Essentials	
Microsoft(R) Windows Server(R) 2012 Datacenter	Windows Server 2012 Datacenter	Windows Server 2012
Microsoft(R) Windows Server(R) 2012 Standard	Windows Server 2012 Standard	
Microsoft(R) Windows Server(R) 2012 Essentials	Windows Server 2012 Essentials	
Microsoft(R) Windows Server(R) 2008 R2 Datacenter	Windows Server 2008 R2 Datacenter	Windows Server 2008 R2
Microsoft(R) Windows Server(R) 2008 R2 Enterprise	Windows Server 2008 R2 Enterprise	
Microsoft(R) Windows Server(R) 2008 R2 Standard	Windows Server 2008 R2 Standard	
Red Hat Enterprise Linux 7.3 (for Intel 64)	RHEL 7.3	Red Hat Enterprise Linux or Linux
Red Hat Enterprise Linux 7.2 (for Intel 64)	RHEL 7.2	
Red Hat Enterprise Linux 7.1 (for Intel 64)	RHEL 7.1	
Red Hat Enterprise Linux 6.8 (for Intel 64)	RHEL 6.8 (Intel 64)	
Red Hat Enterprise Linux 6.8 (for x86)	RHEL 6.8 (x86)	
Red Hat Enterprise Linux 6.7 (for Intel 64)	RHEL 6.7 (Intel 64)	
Red Hat Enterprise Linux 6.7 (for x86)	RHEL 6.7 (x86)	
Red Hat Enterprise Linux 6.6 (for Intel 64)	RHEL 6.6 (Intel 64)	
Red Hat Enterprise Linux 6.6 (for x86)	RHEL 6.6 (x86)	

Official name	Abbreviation	
SUSE Linux Enterprise Server 12 SP1 (for AMD64 & Intel 64)	SUSE 12 SP1(Intel64) or SLES 12 SP1(Intel64)	SUSE Linux Enterprise Server or Linux
SUSE Linux Enterprise Server 12 (for AMD64 & Intel 64)	SUSE 12(Intel64) or SLES 12(Intel64)	
SUSE Linux Enterprise Server 11 SP4 (for AMD64 & Intel 64)	SUSE 11 SP4(Intel64) or SLES 11 SP4(Intel64)	
SUSE Linux Enterprise Server 11 SP4 (for x86)	SUSE 11 SP4(x86) or SLES 11 SP4(x86)	
VMware(R) vSphere(TM) ESXi 6.5	VMware ESXi 6.5	VMware ESXi
VMware(R) vSphere(TM) ESXi 6.0	VMware ESXi 6.0	
VMware(R) vSphere(TM) ESXi 5.5	VMware ESXi 5.5	

Terms

For the major terms and abbreviations used in this manual, see "ServerView Infrastructure Manager V2.0 Glossary."

High Risk Activity

The Customer acknowledges and agrees that the Product is designed, developed and manufactured as contemplated for general use, including without limitation, general office use, personal use, household use, and ordinary industrial use, but is not designed, developed and manufactured as contemplated for use accompanying fatal risks or dangers that, unless extremely high safety is secured, could lead directly to death, personal injury, severe physical damage or other loss (hereinafter "High Safety Required Use"), including without limitation, nuclear reaction control in nuclear facility, aircraft flight control, air traffic control, mass transport control, medical life support system, missile launch control in weapon system. The Customer, shall not use the Product without securing the sufficient safety required for the High Safety Required Use. In addition, Fujitsu (or other affiliate's name) shall not be liable against the Customer and/or any third party for any claims or damages arising in connection with the High Safety Required Use of the Product.

To Use This Product Safely

This document contains important information required for using this product safely and correctly. Read this manual carefully before using the product. In addition, to use the product safely, the customer needs to understand the related products (hardware and software) before using the product. Be sure to use the product by following the notes on the related products. Be sure to keep this manual in a safe and convenient location for quick reference during use of the product.

Modifications

The customer may not modify this software or perform reverse engineering involving decompiling or disassembly.

Disclaimers

Fujitsu Limited assumes no responsibility for any claims for losses, damages or other liabilities arising from the use of this product. The contents of this document are subject to change without notice.

Trademarks

Microsoft, Windows, Windows Vista, Windows Server, Hyper-V, Active Directory, and the titles or names of other Microsoft products are trademarks or registered trademarks of Microsoft Corporation in the United States and other countries.

Linux is a trademark or registered trademark of Linus Torvalds in the United States and other countries.

Red Hat and all trademarks and logos based on Red Hat are trademarks or registered trademarks of Red Hat, Inc. in the United States and other countries.

SUSE and the SUSE logo are trademarks or registered trademarks of SUSE LLC in the United States and other countries.

VMware, VMware logo, VMware ESXi, VMware SMP, and vMotion are trademarks or registered trademarks of VMware, Inc. in the United States and other countries.

Intel and Xeon are trademarks or registered trademarks of Intel Corporation or its subsidiaries in the United States and other countries.

Java is a registered trademark of Oracle Corporation and its subsidiaries/affiliates in the United States and other countries.

Zabbix is a trademark of Zabbix LLC that is based in Republic of Latvia.

PostgreSQL is a trademark of PostgreSQL in the United States and other countries.

Apache is a trademark or registered trademark of Apache Software Foundation.

All other company and product names are trademarks or registered trademarks of the respective companies.

All other products are owned by their respective companies.

Copyright

Copyright Fujitsu Limited 2017 All rights reserved

This manual shall not be reproduced or copied without the permission of Fujitsu Limited.

Contents

Chapter 1 Overview of ServerView Infrastructure Manager.....	1
1.1 Overview.....	1
1.2 Overview of Functions.....	2
1.2.1 Overview of Node Management.....	2
1.2.2 Overview of Monitoring.....	2
1.2.3 Overview of Profile Management.....	3
1.2.4 Overview of Log Management.....	3
1.2.5 Overview of Firmware Management.....	3
1.2.6 Overview of Network Management.....	3
1.3 ISM Functions and Scenarios of Infrastructure Operation and Management.....	4
1.3.1 Images of ISM Functions for Each Scenario of Infrastructure Operation and Management.....	4
Chapter 2 System Configuration.....	7
2.1 Overview of Network Configuration.....	7
2.2 System Requirements.....	8
2.2.1 System Requirements for ISM-VA (Virtual Machines).....	8
2.2.2 System Requirements for Management Terminals.....	9
Chapter 3 Workflow for Installation and Configuration.....	10
Chapter 4 Operation of ISM.....	11
4.1 Startup of ISM GUI.....	11
4.2 Basic Operation of ISM.....	14
Chapter 5 Precautions.....	15

Chapter 1 Overview of ServerView Infrastructure Manager

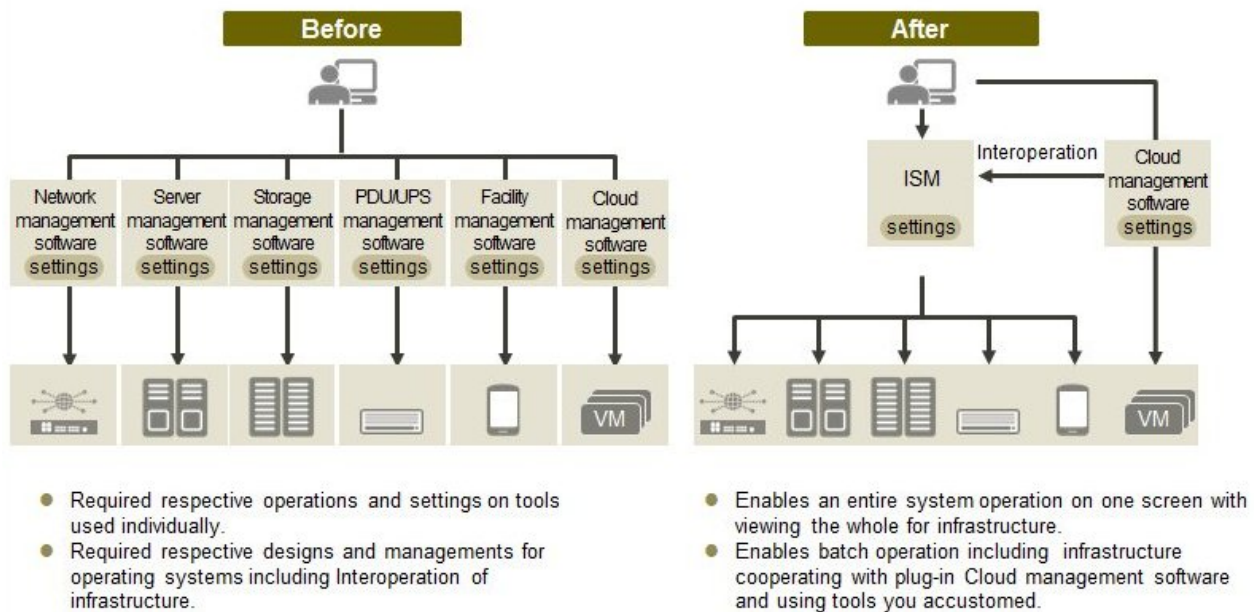
This chapter provides an overview of ServerView Infrastructure Manager.

1.1 Overview

ServerView Infrastructure Manager (hereafter referred to as "ISM") is software for simpler and more efficient operation and management of a multitude of ICT and facility equipment that is running in datacenters and server rooms.

We call ICT and facility equipment that is operated and managed in an ISM environment "nodes."

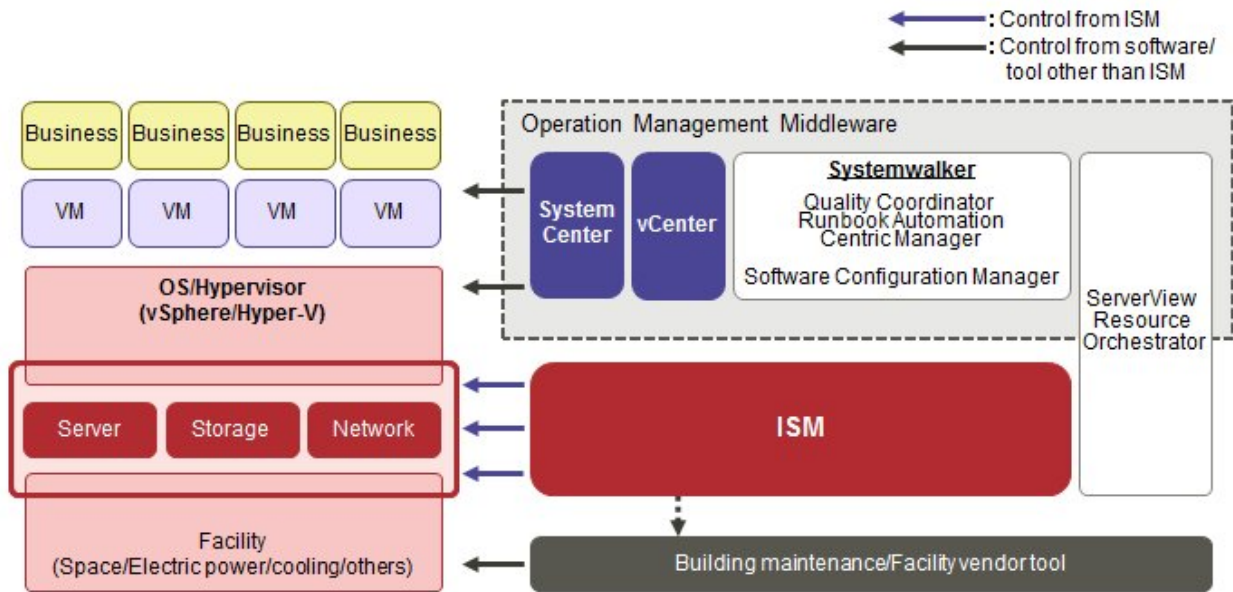
Figure 1.1 Integrated operation and management through installation of ISM



- Optimization of largely centralized operations of physical layers that reach to servers, storages, and networks
 - Collection and management of hardware assets and configuration information
 - Integration of multiple management screens into a single software suite
 - Unified firmware/BIOS update operations for servers, storages, and switches

For the latest information on managed nodes and corresponding functions, access your local support.

Figure 1.2 Working in link with other products



1.2 Overview of Functions

This section provides an overview of the ISM functions.

1.2.1 Overview of Node Management

Node Management is a function that carries out the following actions.

- Device information management
Manages device information such as model names, serial numbers, and IP addresses.
- Device registration
Registers nodes to be managed by ISM.

With this function, you can detect and register the nodes that are connected to your network, making your node registration work more efficient. Moreover, you can manage rack locations on datacenter floors, node locations within racks, as well as configurations and current statuses of nodes. By using the functions to visualize the nodes on floors (Floor View) or in racks (Rack View), you can carry out node management tasks intuitively.

For details on Node Management, see "2.2.1 Node Management" of the "ServerView Infrastructure Manager V2.0 User's Manual."

1.2.2 Overview of Monitoring

Monitoring is a function you can use for monitoring the following events.

- SNMP traps sent from nodes
- Changes in indicated "Normal" and "Error" statuses of nodes
- Whether the values for Air Inlet Temperature, CPU Utilization, and Power Consumption obtained from each node are within the normal ranges you have set in ISM

For these events, you can set up actions such as execution of user-created scripts or transmission of e-mails, and you can monitor nodes according to each user's operating method.

For details on Monitoring, see "2.2.2 Monitoring" of the "ServerView Infrastructure Manager V2.0 User's Manual."

1.2.3 Overview of Profile Management

Profile Management is a function that carries out the following actions.

- Function for PRIMERGY servers:

This function implements batch settings for the BIOS and iRMC as well as batch installation of OSes.

- Function for network switches:

This function implements settings for switches, such as switch administrator passwords, SNMP settings, NTP settings, and so on.

- Function for ETERNUS storages:

This function implements configuration of RAID groups, volumes, hot spares as well as Affinity settings.

To make node settings or install an OS, implement the following procedure:

1. Create a settings definition file called "profile" in ISM.
2. Apply the profile to a node.

For effective use of profiles, ISM also provides auxiliary functions such as the "Policy Function," "Group Management," and "Export/Import."

For details on Profile Management, see "2.2.3 Profile Management" of the "ServerView Infrastructure Manager V2.0 User's Manual."

1.2.4 Overview of Log Management

Log Management is a function that is mainly used for the following purposes:

- Periodical collection of logs according to a schedule you set in advance, separately for each node
- Collection of hardware logs and operating system logs from nodes at any time as needed
- Download and utilization of collected logs
- Lookup and keyword search on a GUI screen

For details on Log Management, see "2.2.5 Log Management" of the "ServerView Infrastructure Manager V2.0 User's Manual."

1.2.5 Overview of Firmware Management

Firmware Management is a function that is mainly used for the following purposes:

- Checking of currently applied firmware versions that are acquired from each node on the screen
- Updating of node firmware to any version as needed (can also be implemented simultaneously for multiple nodes)
- Lookup of Readme files attached to firmware data and of update history and similar files on ISM screen

These features allow for a centralized management of firmware versions.

Note that, whenever you are going to update the firmware, you have to download the firmware data to be applied from the web or another source in advance and then import it to ISM-VA.

For details on Firmware Management, see "2.2.4 Firmware Management" of the "ServerView Infrastructure Manager V2.0 User's Manual."

1.2.6 Overview of Network Management

Network Management is a function that is mainly used for the following purposes:

- Checking the information of the physical network between managed nodes and port information on the Network Map.
- Checking the changes in the information of the network connection between managed nodes.
- Checking the virtual connections of the physical ports, the virtual switches and the virtual machines of the managed node.
- Checking of VLAN and Link Aggregation settings for network switches and changing their settings.

For details on Network Management, see "2.2.6 Network Management" of the "ServerView Infrastructure Manager V2.0 User's Manual."

1.3 ISM Functions and Scenarios of Infrastructure Operation and Management

This section describes the major functions of ISM, separately for each scenario of use.

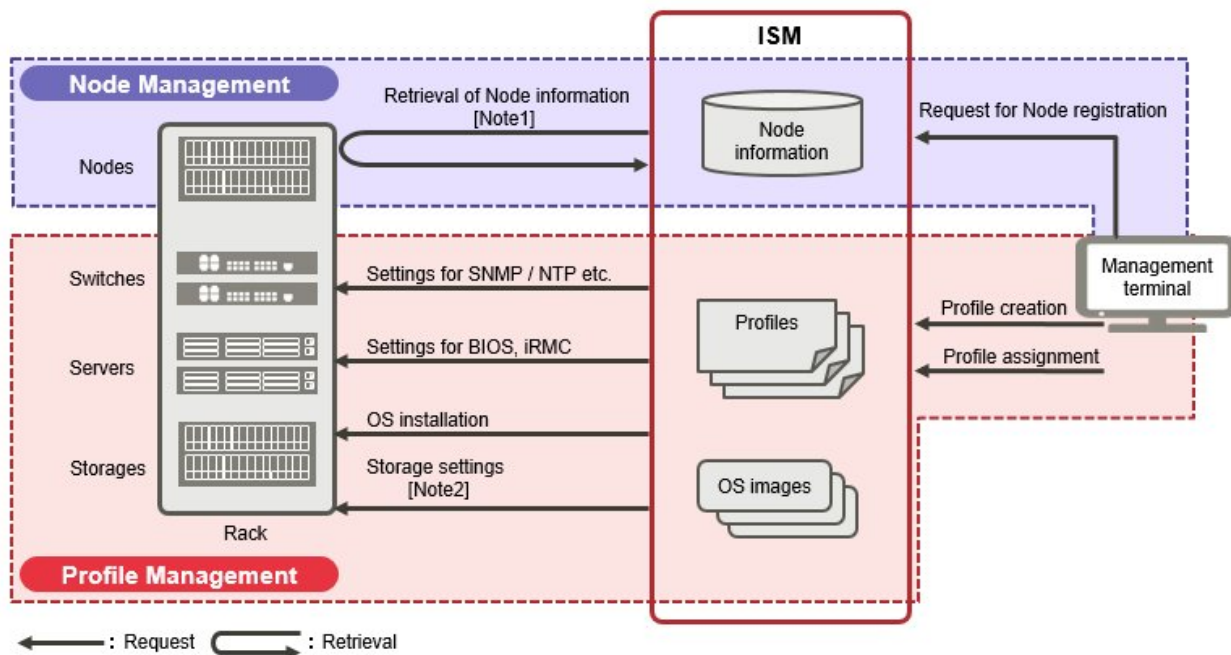
ISM function	Scenario of operation and management		
	System configuration	Monitoring operations for managed nodes	Maintenance of managed nodes
Node Management	Y	Y	-
Monitoring	-	Y	-
Profile Management	Y	-	-
Log Management	-	Y	Y
Firmware Management	-	-	Y
Network Management	-	-	Y

1.3.1 Images of ISM Functions for Each Scenario of Infrastructure Operation and Management

(1) System configuration

In the scenario for first-time installation and addition of ICT devices, you can configure systems by effectively using the Node Management and Profile Management.

Figure 1.3 Image of functions: system configuration



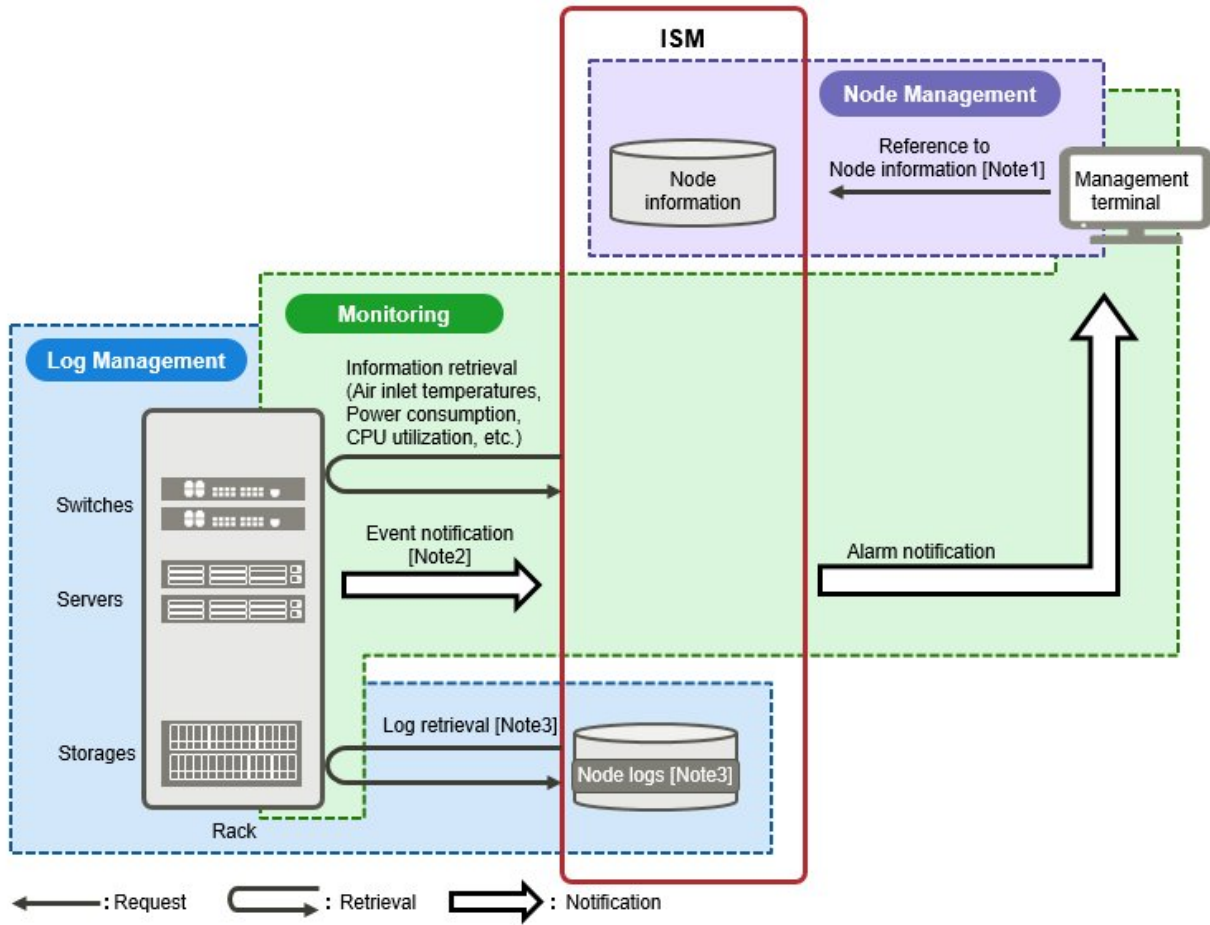
[Note 1] Model names, serial numbers, IP addresses, and similar hardware information

[Note 2] RAID group, volume, hot spare, and Affinity settings

(2) Monitoring operations for managed nodes

In the scenario for monitoring operations for managed nodes, you can carry out monitoring operations for managed nodes by effectively using the Node Management, Monitoring, and Log Management.

Figure 1.4 Image of functions: monitoring operations for managed nodes



[Note 1] Model names, serial numbers, IP addresses, installation positions in racks, and similar hardware information

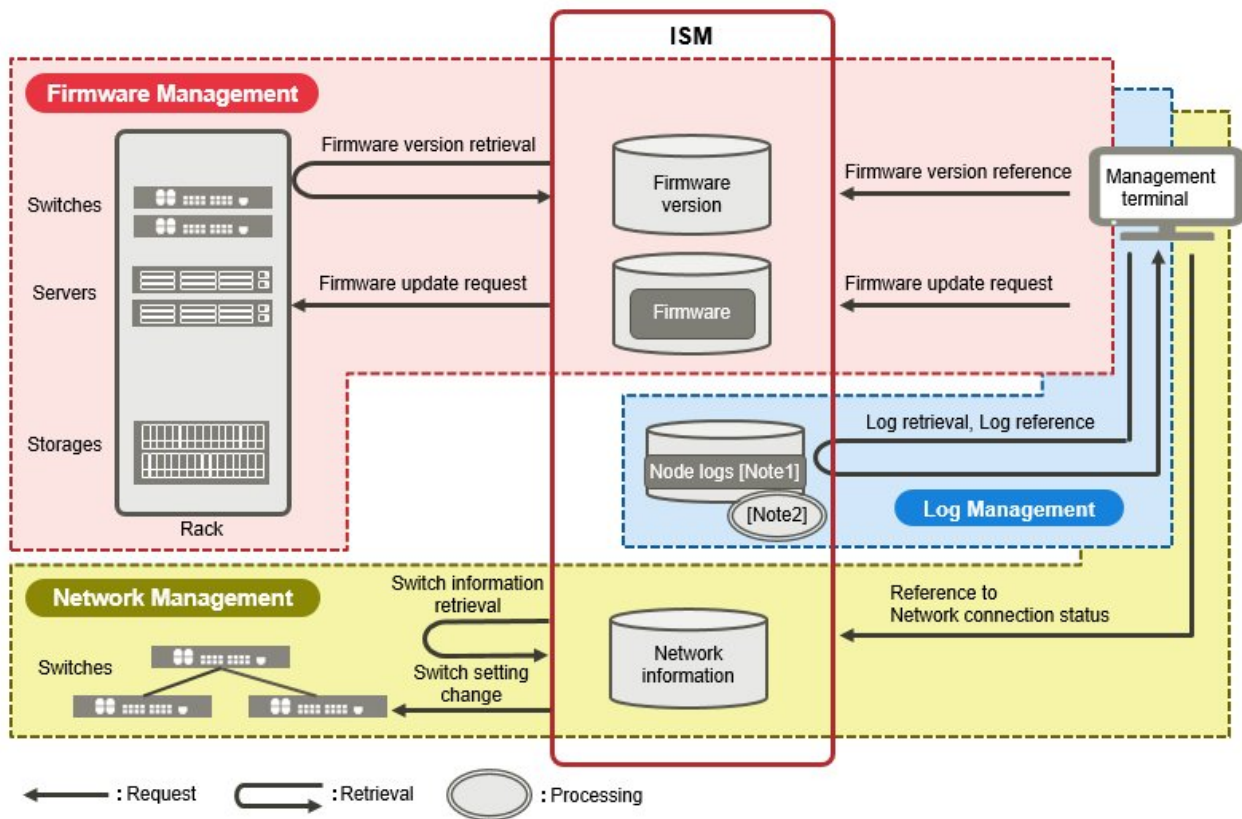
[Note 2] SNMP traps

[Note 3] Hardware logs and operating system logs

(3) Maintenance of managed nodes

In the scenario for maintenance of managed nodes, you can carry out maintenance of managed nodes by effectively using the Log Management, Firmware Management, and Network Management.

Figure 1.5 Image of functions: maintenance of managed nodes



[Note 1] Hardware logs and operating system logs

[Note 2] Processing of log searches

Chapter 2 System Configuration

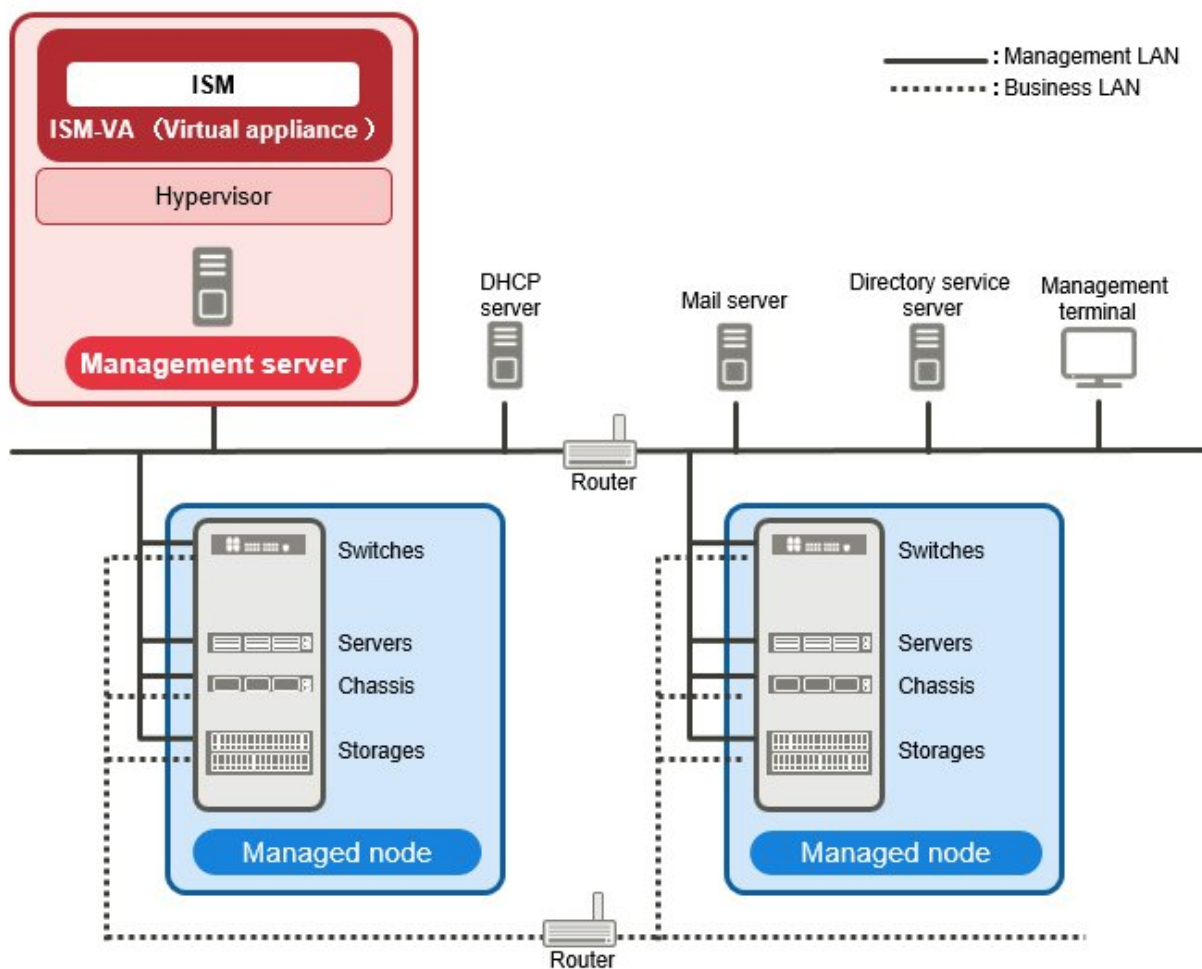
This chapter describes the network configuration and system requirements for operating ISM.

2.1 Overview of Network Configuration

In principle, ISM runs on a server that is separate from the servers to be managed. This manual calls devices that are being managed as "nodes" (or "managed nodes"), and to servers on which ISM is running as "management servers." The management server and nodes are connected via LAN.

You can define only one network interface for ISM. If you are going to configure multiple networks, configure the router to enable communication between the networks.

Figure 2.1 Network configuration



Device and function		Description
Network	Management LAN	LAN used for communicating with the managed nodes so ISM can monitor and control these nodes and transfer data. To ensure security, an isolated connection environment is recommended. Since ISM does not support IPv6, please use it with IPv4.
	Business LAN	LAN used for transferring business data between servers and clients. This does not connect to management servers.

Device and function		Description
Management server	ServerView Infrastructure Manager (ISM)	This software. ISM is provided as a virtual appliance into which the software serving as the operating platform is packaged for virtual machines. After installing ISM on a virtual machine, you can control it over a hypervisor console or an SSH client.
Management terminal		Personal computer or tablet that is used for operating ISM through the management LAN.
Managed nodes	Switches	Node that is an object of status monitoring and control by ISM.
	Storage	
	Server (Managed server)	Node that is an object of status monitoring and control by ISM. BMC (iRMC) have to be connected to the management LAN. To use all functions in ISM, the onboard LAN and LAN card both connect to the management LAN.

For details on designing network configurations and detailed information, access your local support.

2.2 System Requirements

This section describes the system requirements for ISM-VA (virtual machines) and management terminals that serve as operating environments for ISM.

2.2.1 System Requirements for ISM-VA (Virtual Machines)

The system requirements for virtual machines to run ISM-VA are as follows.

Item	Description
Number of CPU cores	2 cores or more [Note 1]
Memory capacity	8 GB or more [Note 1]
Free disk space	35 GB or more [Note 2] [Note 3] [Note 4]
Network	1 Gbps or higher
Hypervisor	Windows Server 2012/2012 R2/2016 VMware ESXi 5.5/6.0/6.5 Red Hat Enterprise Linux 7.2/7.3

[Note 1] The required number of cores and memory capacity depend on the number of nodes to be managed.

Number of nodes	Number of CPU cores	Memory capacity
1 to 100	2	8 GB
101 to 400	4	8 GB
401 to 1000	8	12 GB

[Note 2] This is the minimum disk capacity required for monitoring approximately 100 nodes. The disk space needs to be estimated depending on the number of nodes to be managed and the ISM functions to be used. For information on estimating the disk capacity, see "3.2.1 Estimation of Disk Resources" of the "ServerView Infrastructure Manager V2.0 User's Manual."

[Note 3] For backing up ISM-VA, a management server with free disk space equivalent to or larger than that of ISM-VA is required.

[Note 4] This must be fixedly allocated upon installation of ISM-VA.

For the latest information on supported hypervisors, access your local support.

2.2.2 System Requirements for Management Terminals

System requirements for GUI (browser)

The system requirements for management terminals to run the GUI of ISM are as follows.

Item	Description
Device	PC, server, iPad, Android tablet
Display	<ul style="list-style-type: none"> - Personal computer and server: 1280 x 768 pixels or more <p>The window size of your browser for displaying the GUI of ISM must be at least 1280 x 768 pixels.</p> <ul style="list-style-type: none"> - Tablet: display mounted to devices stated above
Network	100 Mbps or higher
Web browser	<ul style="list-style-type: none"> - PC and server: <ul style="list-style-type: none"> - Internet Explorer <p>In order to display the "3D View" screen, update version (11.0.15 or higher) must be applied.</p> - Microsoft Edge - Mozilla Firefox - Google Chrome - iPad: Safari 8 - Android tablet: Google Chrome
Related software	Acrobat Reader (for viewing manuals)

For the latest information on supported devices and web browsers, access your local support.

System requirements for management terminals for file transfer

The system requirements for management terminals to carry out file transfers with ISM-VA, such as of data required for setting up managed nodes or of ISM logs, are as follows.

Item	Description
Device	PC or server
Free disk space	8 GB or more (equivalent to one DVD)
Network	100 Mbps or higher
Required software	FTP client software
Related software	SSH client software

Chapter 3 Workflow for Installation and Configuration

This chapter provides an overview of the work involved from installing ISM to registering nodes.

(1) Installation Design

When you are going to install ISM, you have to perform the following tasks in preparation.

- Estimation of disk resources
- Repository settings
- Network design
- Setting node names and profile names
- Setting of Users

For information on the contents of these tasks, see "3.2 Installation Design for ISM" of the "ServerView Infrastructure Manager V2.0 User's Manual."

(2) Installing ISM-VA

Install ISM-VA on a management server.

For information on the installation procedure, see "3.3 Installing ISM-VA" of the "ServerView Infrastructure Manager V2.0 User's Manual."

(3) Setup of ISM-VA Environment

Set up the operating environment in which you installed ISM-VA.

For information on the contents of the environment setup procedure, see "3.4 Environment Settings for ISM-VA" of the "ServerView Infrastructure Manager V2.0 User's Manual."

(4) Registration of License

Register the license that is required for using ISM.

For information on the tasks required to register the license, see "3.5 Registration of Licenses" of the "ServerView Infrastructure Manager V2.0 User's Manual."

(5) Registration of Users

Register the ISM users.

For information on the tasks required to register users, see "3.6 Registration of Users" of the "ServerView Infrastructure Manager V2.0 User's Manual."

(6) Allocation of Virtual Disks

Allocate virtual disks in order to expand the disk capacities of ISM-VA.

See "3.7 Allocation of Virtual Disks" of the "ServerView Infrastructure Manager V2.0 User's Manual" to allocate virtual disks to the entire ISM-VA and Administrator user groups.



Note

After installation of ISM-VA, immediately perform virtual disk allocation for Administrator groups according to the procedure described in "3.7.2 Allocating Virtual Disks to User Groups" of the "ServerView Infrastructure Manager V2.0 User's Manual."

Chapter 4 Operation of ISM

This chapter describes the methods to operate ISM.

4.1 Startup of ISM GUI

ISM provides a GUI that can be operated over web browsers.

For details on the GUI of ISM, see ISM Help.



Point

- In your browser, it is required to enable cookies and JavaScript.
- If you are using Firefox, it is required to register the server certificate in the browser.
 1. Open Firefox and, from the menu, select [Options].
 2. Select [Advanced] and click [Certificates].
 3. Click [View Certificates].
 4. On the [Servers] tab, click [Add Exception].
 5. Under [Location], enter "https://<IP address of ISM server> or <FQDN name of ISM server>:25566/", and then click [Get Certificate].
 6. Confirm that the [Permanently store this exception] checkbox is checked, and then click [Confirm Security Exception].
- If you are using Internet Explorer, the following settings are required.
 1. Open Internet Explorer and, from the menu, select [Tools] - [Internet options].
 2. On the [Security] tab, click the [Custom level] button and select [Enable] for the following items before you click the [OK] button.
 - [Run ActiveX controls and plug-ins] under [ActiveX controls and plug-ins]
 - [File download] under [Downloads]
 - [Font download] under [Downloads]
 3. On the [Advanced] tab, under [Multimedia], select the "Play animations in web pages" checkbox and click the [OK] button.
- In order to display the "3D View" screen in Internet Explorer 11, Microsoft's technical support information (hereafter referred to as "KB") 2991001 must be applied. The "3D View" screen is a GUI that displays floors, racks, and device locations within racks as three-dimensional images.

<https://support.microsoft.com/en-us/kb/2991001>

If the "3D View" screen does not display the racks, apply Microsoft's security update MS14-051, which also includes KB 2991001. For details, see the following website:

<https://technet.microsoft.com/en-us/library/security/MS14-051>

- If you are using Google Chrome, depending on the hardware capabilities of your terminal and your graphics driver, the WebGL function (for displaying 3D graphics in browsers) may be disabled. If the WebGL function is disabled, you cannot display the "3D View" screen.

You can use the following procedure to check whether the WebGL function is enabled or disabled.

1. Open Google Chrome and enter "chrome://gpu" into the address bar.
2. If, under [Graphics Feature Status], [Hardware accelerated] is displayed for [WebGL], the WebGL function is enabled, otherwise it is disabled.

The procedure for starting up the ISM GUI is as follows.

1. Start a browser and enter the following URL:

```
https://<IP address of ISM server> or <FQDN name of ISM server>:25566/
```

2. When the login screen is displayed, enter your user name and password, and then click the [Login] button.



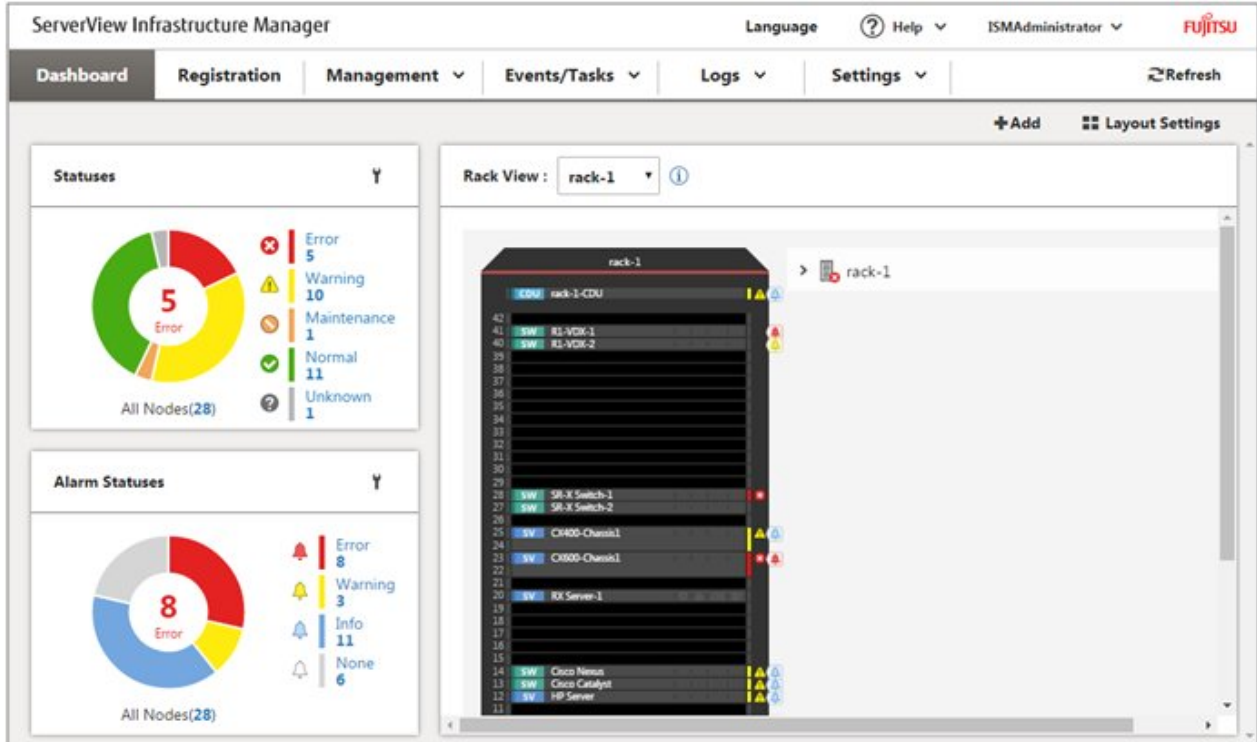
If a warning for the security certificate is displayed, see "4.7 Certificate Activation" of the "ServerView Infrastructure Manager V2.0 User's Manual" and activate the certificate.

P Point

When you log in for the first time, use the following user name and password. After logging in with this user name, change the password for the default user and create new users before you continue operations.

- User Name: administrator
- Password: admin

If your login is successful, a dashboard screen is displayed.

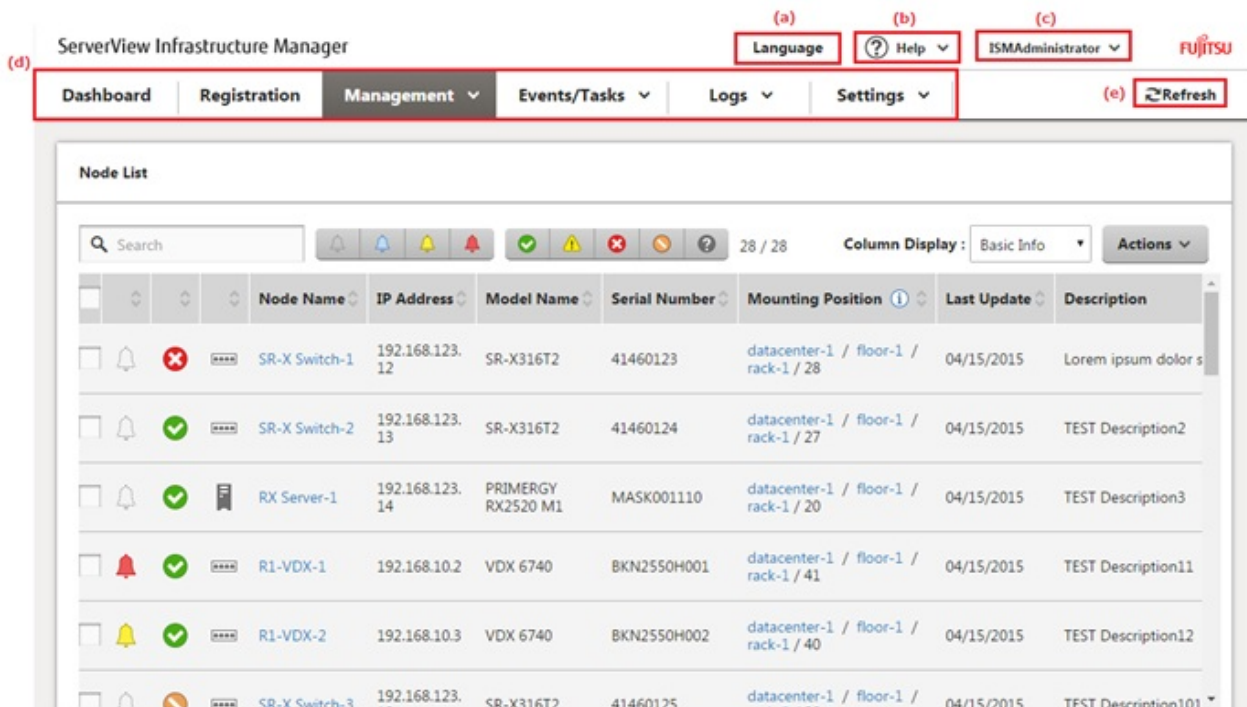




In order to log out, click on the Login User Name that is displayed in the top right corner of the screen.



The structure of ISM's GUI screen is as follows.



(a) Language

You can change the settings for the displayed Language, Date Format and Time Zone on the GUI.

(b) Help

You can access help and guidance information.

(c) User Name

You can view the user name by which you are logged in.

In order to log out from ISM, place the mouse pointer on the user name and click [Log out].

(d) Global Navigation menu

This menu serves to access the various screens of ISM.

(e) Refresh button

Clicking this button refreshes the entire screen.

The GUI screens of ISM are not updated automatically as long as you stay on the same screen. (However, when you move to another screen, the latest information is retrieved again from the server.)

Therefore, to check the latest information, you have to click the [Refresh] button to update the screen.

4.2 Basic Operation of ISM

For the basic procedures for operating ISM, see "ServerView Infrastructure Manager V2.0 Operating Procedures."

Chapter 5 Precautions

Timing of completing OS installation

The status after completing profile assignment varies with the OS type and the OS settings. Likewise, the timing for executing optional scripts as specified by profiles also varies with the OS type.

OS type and settings	Status after completing profile assignment to OS	Timing for executing optional scripts
Windows	EULA screen during OS installation	At first login after accepting EULA and completing license input
Linux	Login prompt after OS has completely booted	First login prompt (execution completed)
X Window enabled in RHEL7	Last setting screen during OS installation	When OS login prompt is displayed after completing last settings
VMware ESXi (IP addresses are fix)	When network communication has become available after OS has completely booted	During OS installation (execution completed)
VMware ESXi (IP addresses are set by DHCP)	After completing OS installation and reboot	During OS installation (execution completed)

About the RAID configuration when installing an OS on a managed server

For OS installation, you need ServerView Suite DVD.

The number of logical drives configured with an array controller is only one if you perform OS installation using ServerView Suite DVD V11.16.04.

Precautions on using paid support service (SupportDesk Standard) for Red Hat Enterprise Linux (Only for Japanese market)

In order to engage in an agreement for a paid support service and to receive such support, your system configuration needs to fulfill some requirements.

When you use ISM's Profile function to automatically install Red Hat Enterprise Linux, the "Fujitsu Linux Support Package (FJ-LSP)" required for support is not applied, and no memory dump settings are made. Make any required settings manually after installation.

For details on setting contents and methods, refer to the Linux user's manual for SupportDesk service subscribers.

Using automatic data collection by Log Management

ISM can periodically collect logs according to a schedule you set in advance. If you use this feature, however, you should take note of the following points:

- Logs are not collected by merely registering a node. You have to set the type of log to be collected and the schedule separately for each node.
- If there is any mistake in the node settings or in the settings within ISM, logs cannot be properly collected. After making the respective settings, implement a manual log collection to check that the log files are accumulated correctly and that there is no log collection error recorded in the [Event/Task]-[Event]-[Operations Log].
- If the volume of the log files reaches the "Warning threshold" set in "Node log" or "Archived Log" set for each user group in [Various Settings] an alert event will be registered in ISM events. Delete logs that are no longer needed. On reaching the "Maximum Size" set in the same way, no more logs are saved.
- Old logs are automatically deleted when the set period/frequency is exceeded. When you use the log collection function, change this setting to a value that is appropriate for you.