

# Datasheet

## Fujitsu RFID and Sensor Solution RFID Data Management Pro for Mobile Computers and Fixed Readers

ATA Spec 2000 parts marking made simple, much more made possible

Fujitsu's RFID Data Management Pro software makes it easy to capture ATA records and other data from standard RFID tags using mobile computers or fixed-position readers. The software also makes it easy to move beyond capturing basic data and so users can expand RFID programs to include birth records, parts history, lifecycle records and other data that can be used to automate processes.

The software and Fujitsu's line of high-memory aviation RFID tags create many exciting possibilities to improve parts visibility, inspection, maintenance management and inventory control throughout the value chain.

### Processes Enabled by RFID Data Management Pro

Here are some of the things you can do with Fujitsu's RFID Data Management Pro.

- **Encode RFID tags for ATA Spec 2000 part marking** – With RFID Data Management Pro, properly formatting part marking data in compliance with ATA Spec 2000 and encoding it in a standard RFID tag is simple as scanning a 2D bar code and following the software prompts. The software saves time and prevents errors in the part ID process. Single Record, Dual Record and Multiple Record data formats defined in the latest ATA Spec 2000 are all supported.

- **Update tags with new information** – The software helps you take advantage of the extra data capacity on high-memory tags by enabling you to create or update maintenance history, lifecycle and other records according to Spec 2000-standard data formats, and to access or add custom information in the scratchpad portion of tag memory. These enhanced data management capabilities can support many automated work processes to improve accuracy and save record keeping time for production, maintenance, inspection, authentication, inventory management and other processes. The solution enables simple data exchanges between stakeholders in the aviation industry supply chain by using the tag as data carrier. This offers the advantage of not having to rely on network connectivity to access the data at the point of use.

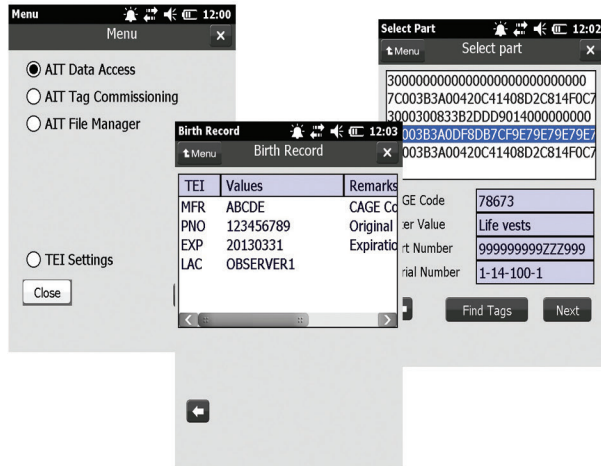
- **Customize Data Entry Fields** – With this software, you can customize data entry fields to accommodate your own business needs



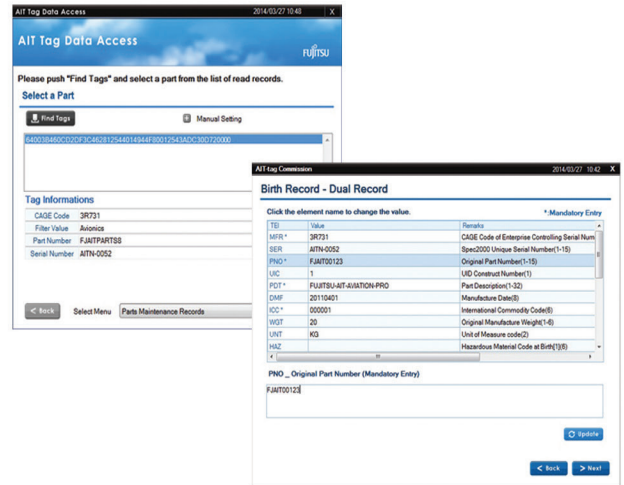
# Technical details

Function		Mobile	Fixed
RFID access	Display Birth Record	✓	✓
	Display Current Data Record	✓	✓
	Update Current Data Record	✓	✓
	Display User Scratchpad Record	✓	✓
	Update User Scratchpad Record	✓	✓
	Display Part History Record	✓	✓
	Add Part History Record	✓	✓
	Display Lifecycle Record	✓	✓
	Update Lifecycle Record	✓	✓
RFID tag commissioning	Initialize tags	✓	✓
	Initialize tags with Barcode Scan	✓	-
TEI settings	Configure settings for showing or hiding TEIs	✓	-
	Configure settings about whether TEIs are mandatory or optional	✓	-
	Add or delete additional information TEIs (CSDD)	✓	✓
	Add or delete additional information TEIs (custom information)	✓	✓
RFID file manager	Save, read or delete files in the custom user area	✓	✓
	User management	-	✓

For mobile computers



For fixed readers



## Contact

### Japan Office

Fujitsu Limited  
 AIT Solution Business Division  
 Phone: +81 3 6252 2612  
 E-mail: gsb-fujitsu-ait@ml.css.fujitsu.com  
 Website: www.fujitsu.com/global/solutions/ait

### North America Office

Fujitsu America Inc.  
 New Solution Business Unit  
 Phone: +1 425 451 3100  
 Fax: +1 425 451 3101

Fujitsu endeavors to ensure that the information in this document is correct and fairly stated, but does not accept liability for any error or omission. All brand names and product names are trademarks and registered trademarks of their respective holders. Specifications are subject to change

April 2014