

Fujitsu Gateway

Intelligent Application Platform for Process Automation and Hybrid IT

SC'18

Dallas Texas

November, 2018

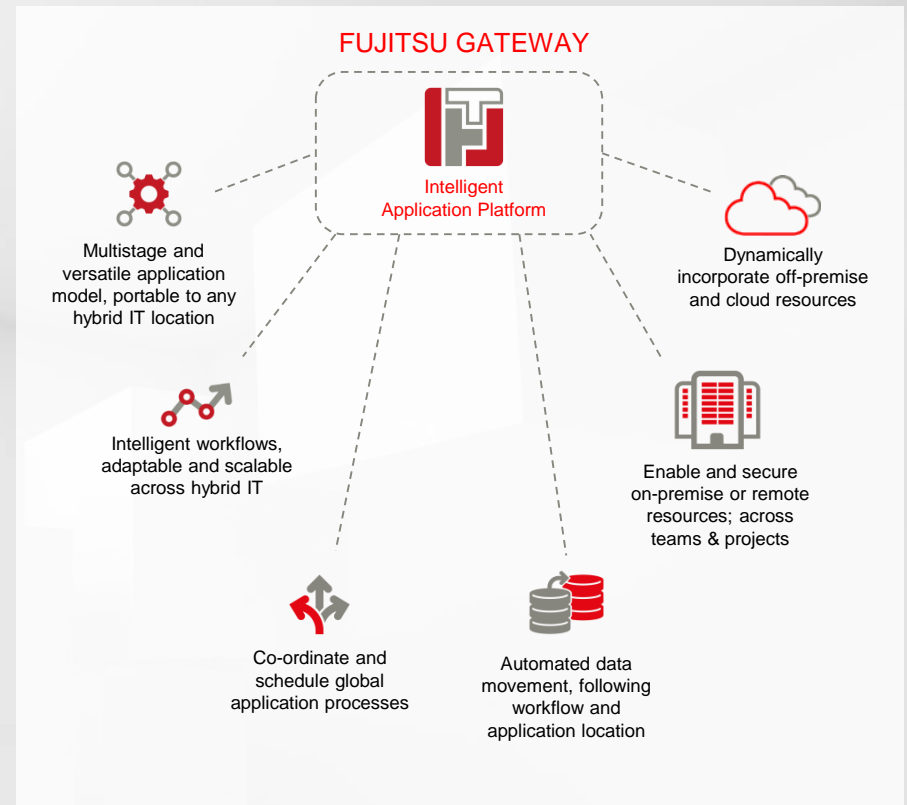
Introducing FUJITSU GATEWAY



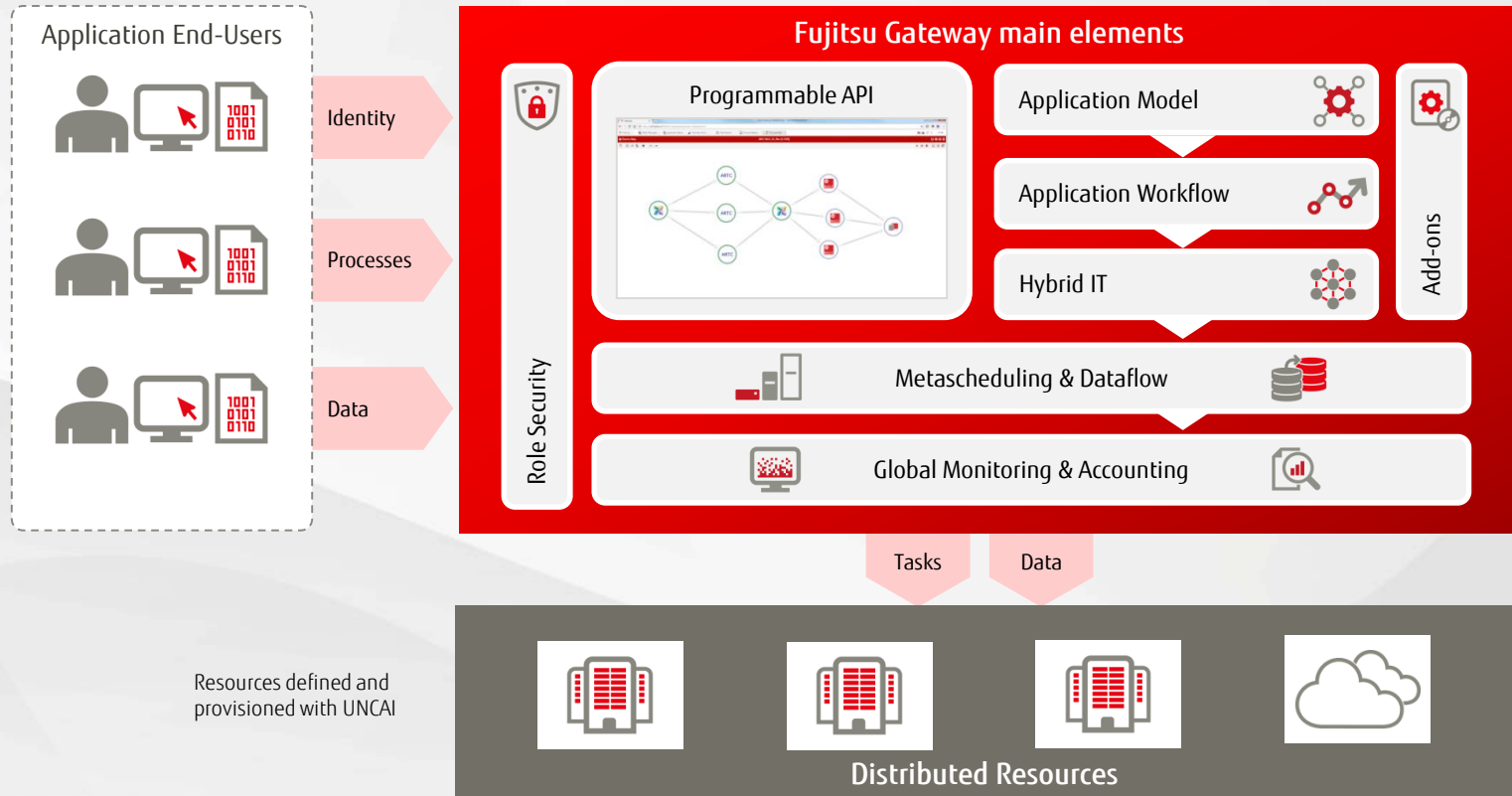
➤ Fujitsu Gateway is an application platform to automate and orchestrate business processes across a hybrid IT infrastructure

➤ Gateway converts application sequences into adaptable and intelligent workflows independent of the IT framework.

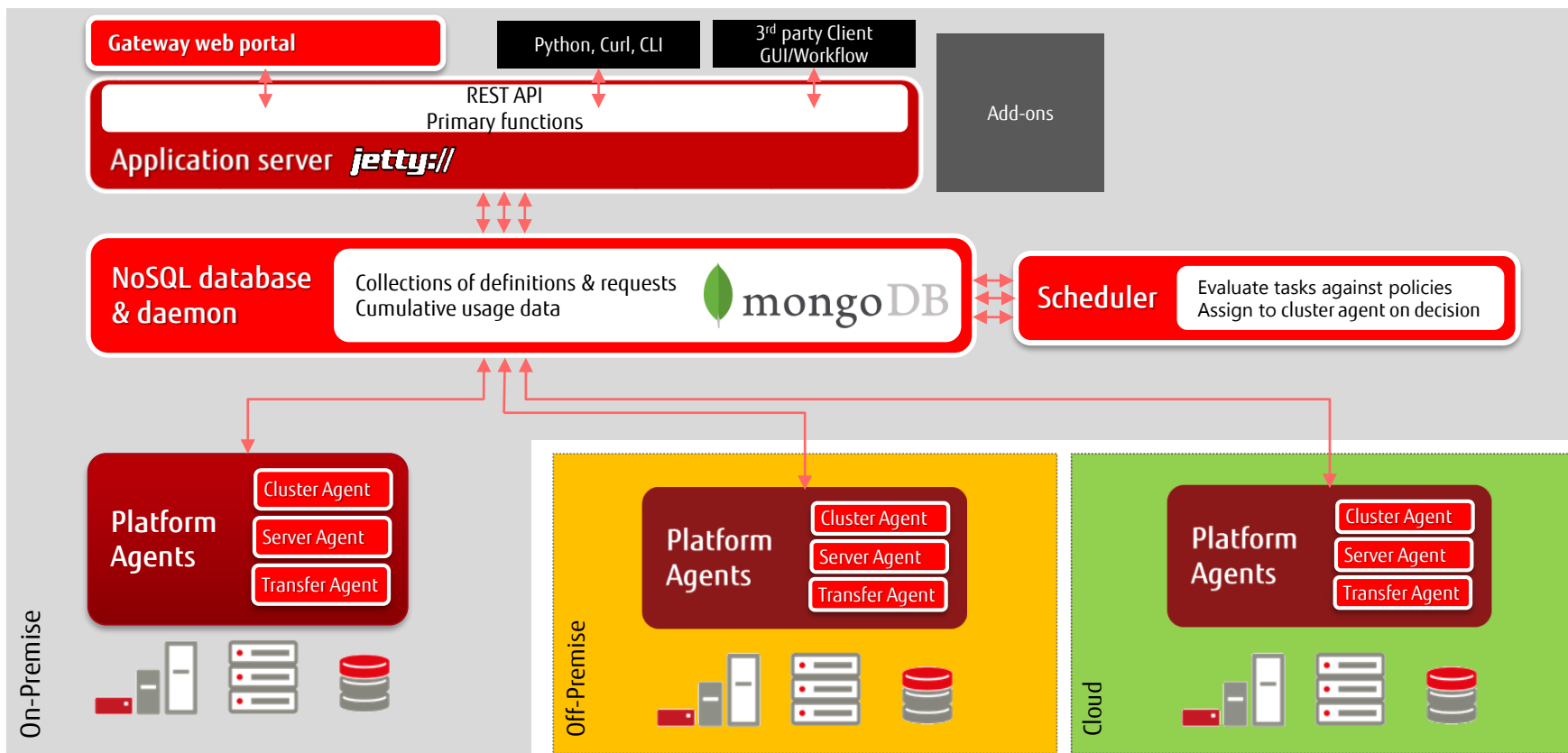
➤ Gateway enables organizations to scale out across dispersed and changeable resources without affecting the business user layer.



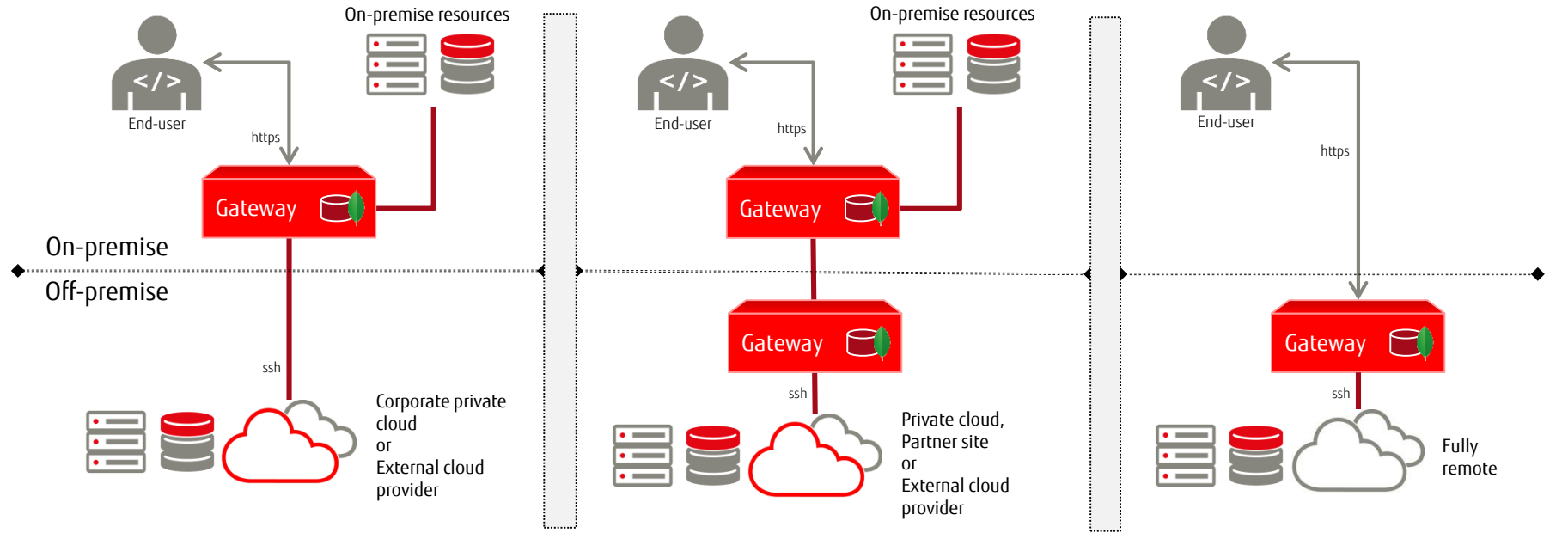
Fujitsu Gateway Schematic



Gateway Components



Flexible Hybrid IT Deployment



Public cloud usable with Gateway

..... Auto-provisioning ● Pre-deployed platforms only

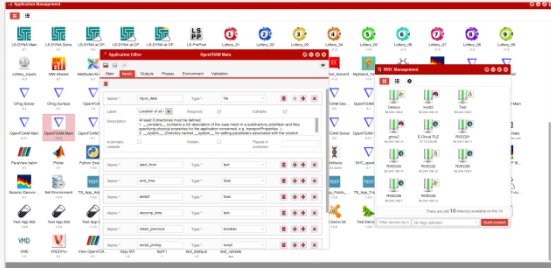
K5



Azure

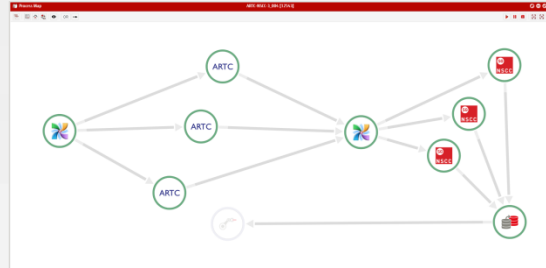


Key Gateway Elements



Application Model

- Clear separation of logic, data flow and environment, representing various application types
 - simulation, interactive, learning, analytic
- Self-service model creation with role-based access control
- Input data can be expressed as business objects of the customer processes



Dynamic Workflow

- Automated application workflow with implicit dataflow, across global IT resources
- Clone, replay and extend workflows during or after completion
- Intelligent workflow programming adapts to task results



Scalable Architecture

- Minimal baseline components makes a simpler more robust operational framework
- Configuration options – all on-premise, hybrid IT, full off-premise, collaboration
- Open framework for customer plug-ins and addons

Intelligent Dynamic Workflows

Automated

Connect applications into an adaptable and orchestrated workflow mapped to end-to-end user process

Intelligent

Programmable workflow components enable process to react to generated results – auto-steering, auto-create



Dynamic

Workflow can be paused, cancelled, cloned, resumed, and extended during execution

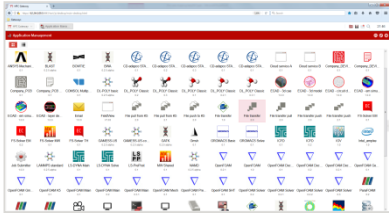
Adaptable

Workflow will seamlessly utilise resources from any location, combining global scheduling with implicit dataflow

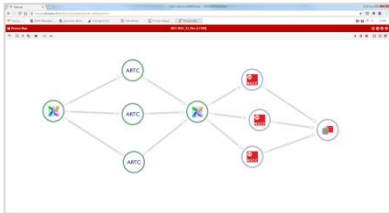
The Front-End – A Unified Application Workplace



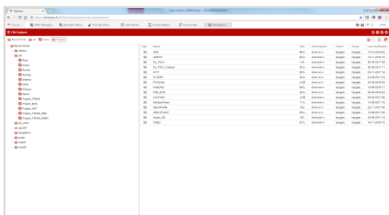
Application Management



Intelligent workflow



Global file explorer

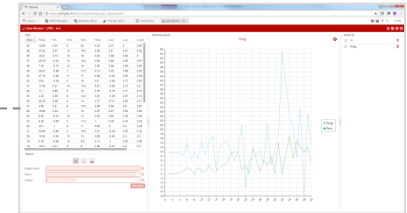


Gateway Web Desktop

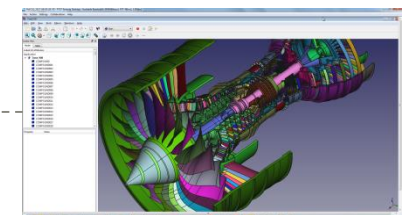
Task monitoring

Task ID	Task Name	Status	Priority	Assignee	Start Date	End Date	Progress
1001	Task 1	Completed	High	John Doe	2018-01-01	2018-01-05	100%
1002	Task 2	In Progress	Medium	Jane Smith	2018-01-02	2018-01-10	75%
1003	Task 3	Pending	Low	Mike Johnson	2018-01-03	2018-01-15	20%
1004	Task 4	On Hold	High	Sarah Lee	2018-01-04	2018-01-12	0%

Data Monitor

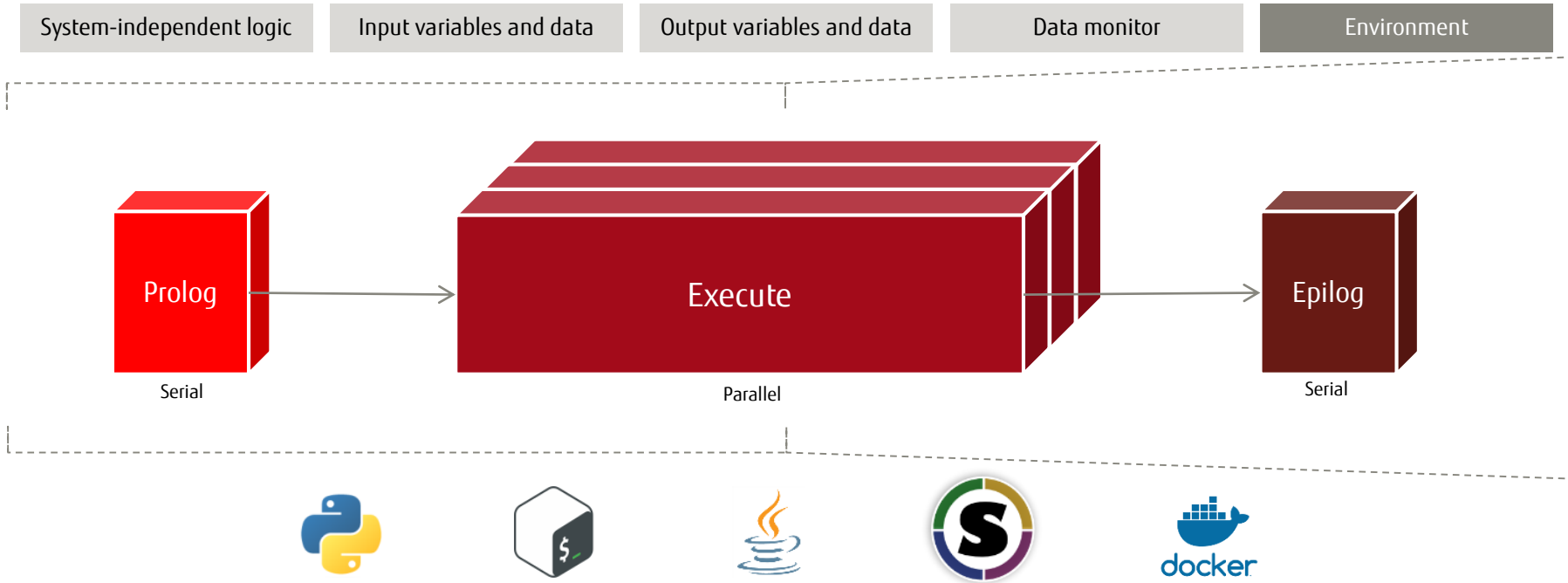


Remote visualisation

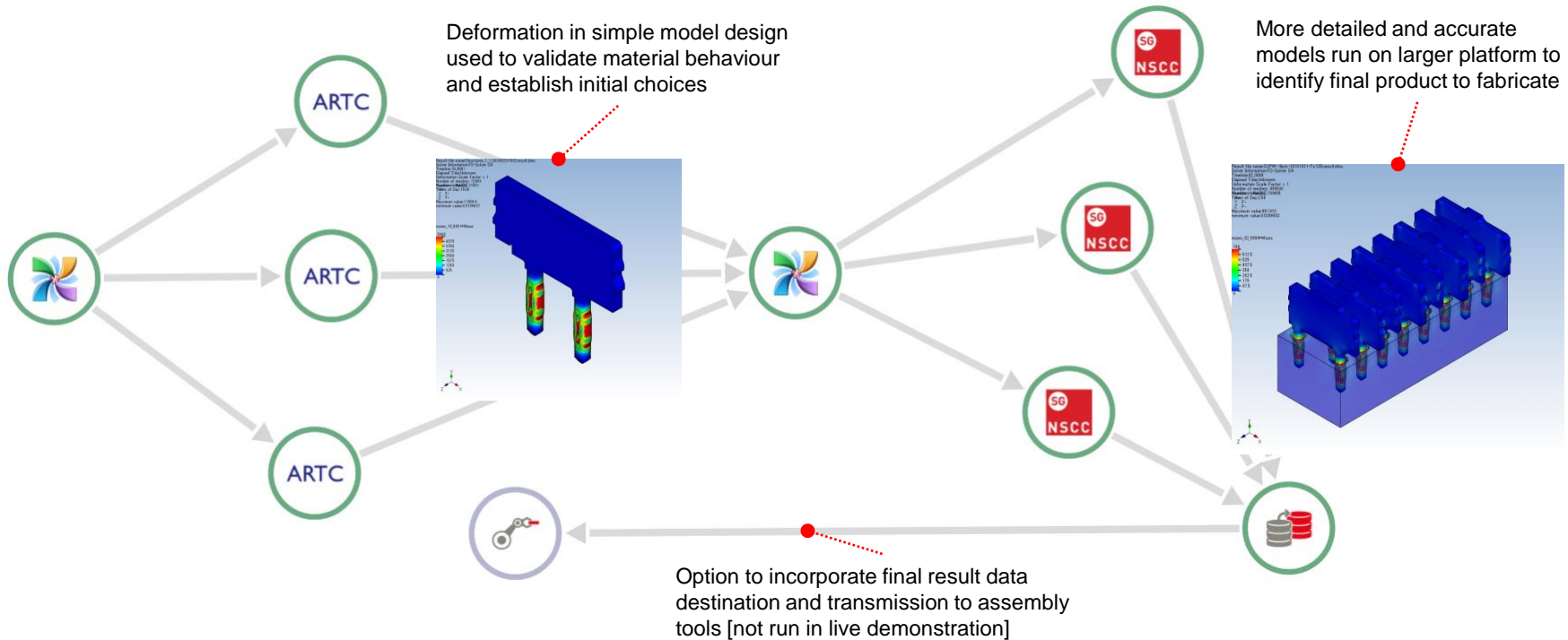


Gateway Basic Application

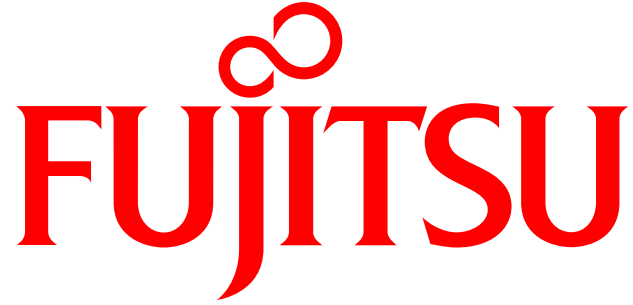
A complete portable model of the application, self-service or centrally defined



A Multisite Engineering Workflow



Sample end-to-end engineering process – encoded in Fujitsu Gateway, demonstrated on NSCC



shaping tomorrow with you