

Fujitsu Group Profile

Parent Company Fujitsu Limited

Addresses

- Kawasaki Main Office
4-1-1 Kamikodanaka, Nakahara-ku, Kawasaki-shi, Kanagawa 211-8588, Japan
- Headquarters
Shiodome City Center 1-5-2 Higashi-Shimbashi, Minato-ku, Tokyo 105-7123, Japan

President Masami Yamamoto

Established June 20, 1935

Main Business Activities Manufacture and sale of communications systems, information processing systems, and electronic devices, and the provision of services related to those products

Sales Capital Total Assets Consolidated: ¥4,528.4 billion (FY 2010)
¥324.6 billion (as of the end of March 2011)
¥3,024,097 million (as of the end of March 2011)
(Liabilities: ¥2,070,318 million; net assets: ¥953,779 million)

Fiscal Year-end March 31

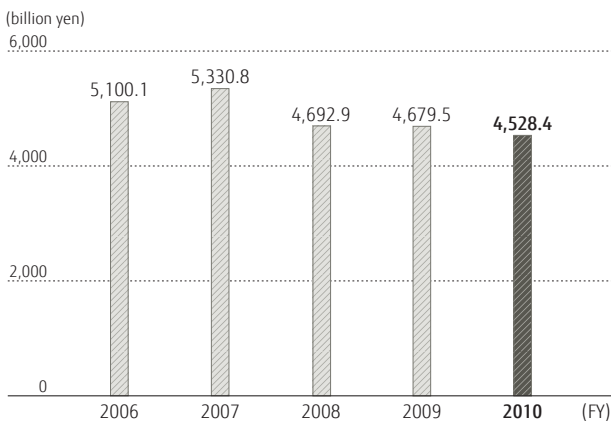
Employees Consolidated: 172,336 (as of the end of March 2011)
Unconsolidated: 24,969 (as of the end of March 2011)

Consolidated Subsidiaries 535 companies

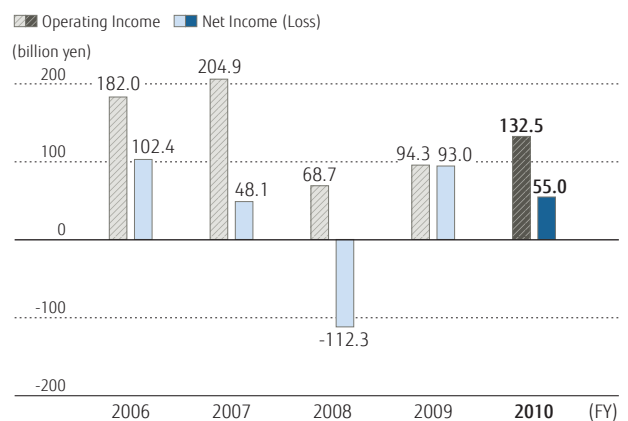
Equity-method Affiliates 15 companies

Stock Exchange Listings Tokyo, Osaka, Nagoya, London

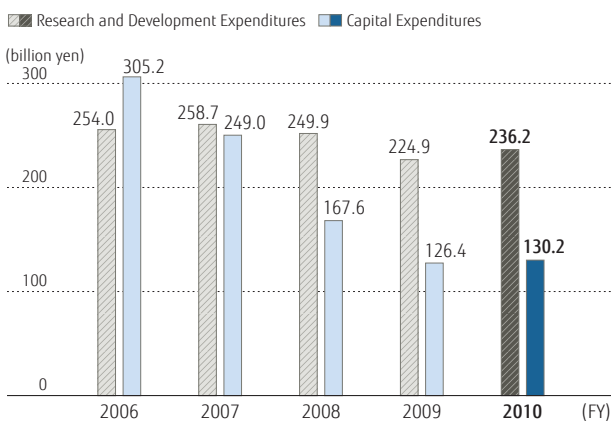
Consolidated Net Sales



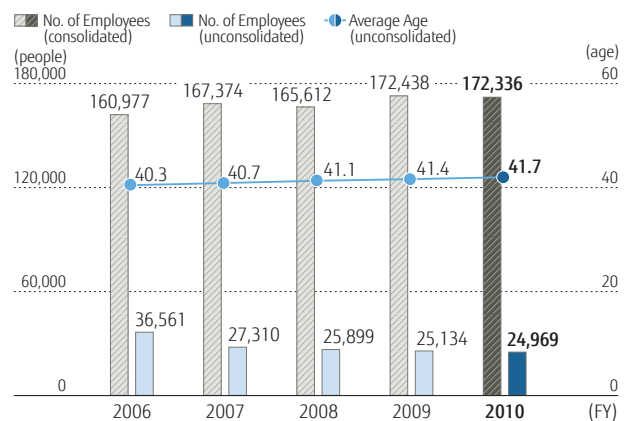
Consolidated Operating Income/Net Income (Loss)



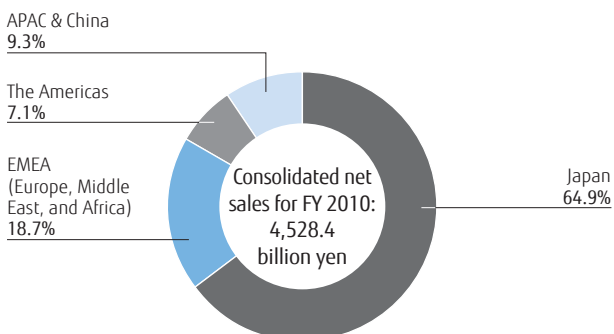
Research and Development Expenditures/Capital Expenditures



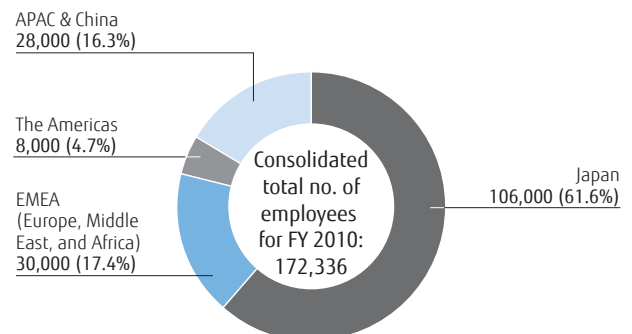
Trends in the Numbers and Ages of Employees



Sales Ratios by Region



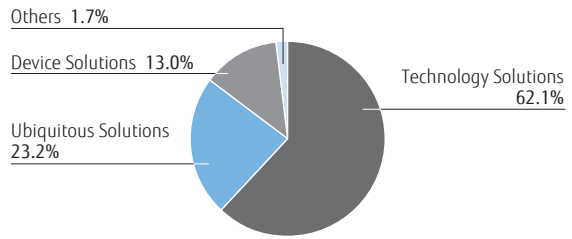
Employees by Region



Regarding Our Business Segments

The Fujitsu Group provides a wide range of services and products with the advanced technology, high performance and high quality essential for the future of the ICT sector, and operates an integrated total solutions business, from the development, manufacturing and sales of those products and electronic devices to the provision of maintenance services.

FY 2010 Consolidated Net Sales by Business Segment



Technology Solutions

Services: System integration/consulting/front-end technologies (ATM and POS systems, etc.)/outsourcing services/network services/system support services/security solutions

System Platforms: Full range of servers/storage systems/various types of software/network management systems/optical transmission systems/mobile phone base stations



Tower Server - PRIMERGY TX120 S3



The Integrated Control Room of Tatebayashi System Center

Main consolidated subsidiaries

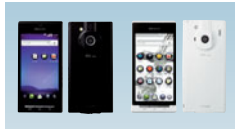
- Fujitsu Frontech Limited
- Fujitsu Telecom Networks Limited
- Fujitsu IT Products Ltd.
- Fujitsu Broad Solution & Consulting Inc.
- Fujitsu Marketing Limited
- Fujitsu System Solutions Limited
- Fujitsu FIP Corporation
- NIFY Corporation
- Fujitsu FSAS Inc.
- PFU Limited
- Fujitsu Network Communications, Inc.
- Fujitsu Services Holdings PLC
- Fujitsu America, Inc.
- Fujitsu Australia Limited
- Fujitsu Technology Solutions (Holding) B.V., others

Ubiquitous Solutions

PCs, mobile phones



FMV LIFEBOOK SH SERIES



au by KDDI REGZA Phone IS04

Main consolidated subsidiaries

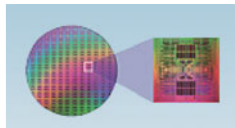
- Shimane Fujitsu Limited
- Fujitsu Isotec Limited
- Fujitsu Mobile-phone Products Limited
- Fujitsu Toshiba Mobile Communications Limited
- Fujitsu Peripherals Limited
- Fujitsu TEN Limited
- Fujitsu Personal System Limited
- Fujitsu Technology Solutions (Holding) B.V., others

Device Solutions

Logic LSIs/memory LSIs/semiconductor packages/optical transceiver modules/mechanical components (relays, connectors, etc.)



FM3 Family of 32-bit RISC microcontrollers



The SPARC64™ VIIIx wafer, the world's fastest processor

Main consolidated subsidiaries

- Fujitsu Semiconductor Limited
- Shinko Electric Industries Co., Ltd.
- FDK Corporation
- Fujitsu Component Limited
- Fujitsu Electronics Inc., others

Global Business System

