

The Concept of Producer Responsibility

IPR is a major challenge for the Fujitsu Group in expanding its business globally, but we believe that responding to this challenge and that of EPR in collaboration with industry associations and governments will enable us to help create a recycling-minded society in which the requirements and demands of all stakeholders are met.

Our Approach to Product Recycling Overseas

EMEA: Fujitsu Technology Solutions (Holding) B.V. (FTS)

Moreover, since 2008 Fujitsu Technology Solution's South Africa office has been collaborating with local waste-management companies to collect and recycle from corporate and individual customers all products of any brand, including monitors, printers, mobile phones, desktop PCs, notebook PCs, calculators, TVs, and DVD equipment. This is the first time an ICT company has provided such a service in South Africa.



Singapore: Fujitsu PC Asia Pacific Pte. Ltd. (FPCA)



http://www.fujitsu.com/sq/news/pr/fpcap_20071101.html

Brazil: Fujitsu do Brazil Ltda. (FBR)

Promoting Product Recycling in Japan

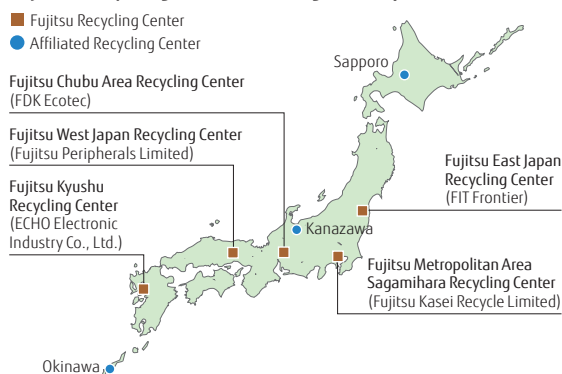
Fujitsu has developed a nationwide recycling system based on Fujitsu Recycling Centers and other facilities throughout Japan. This system provides for rigorous traceability and security, and achieves a high resource reuse rate*. By providing this safe and secure service, we are fully discharging our Extended Producer Responsibility (EPR).

* Resource reuse rate

[illegible]

Reconfiguring Our Recycling Center Structure in the Tokyo Metropolitan Area

Fujitsu Recycling Centers Throughout Japan



Achievements in Collecting and Recycling End-of-Life ICT Products

We recycled 6,445 tons of ICT products from corporate customers in fiscal 2009, and achieved a resource reuse rate of 90.8%. Also, we have now collected a total of 67,662 end-of-life PCs from individual customers.

Trends in Resource Reuse Rate of End-Of-Life Business ICT Products (%)

FY	2006	2007	2008	2009
Resource reuse rate	91.5	91.8	91.5	90.8

Promoting Recycling

Experienced workers carefully disassemble collected products by hand and separate the materials into categories such as steel, copper, aluminum, precious metals, glass and 20 different types of plastic. They also strive to raise their manual disassembly standards through the use of animated disassembly manuals. Materials recognition equipment has been introduced for plastics that are difficult to discriminate, so as to allow the complete segregation of different types of plastic.

In addition to minimizing the quantity of waste materials in this way, we are continually trying to turn them back into resources that can be reused to make products. To keep our customers informed of these initiatives, we distribute ballpoint pens and clear folders made from recycled plastic at exhibitions and other events, as well as demonstrating PCs being manually disassembled.



Materials recognition equipment



Ballpoint pens



A clear folder

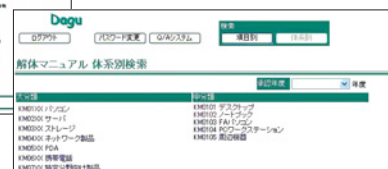
Providing Product Recycling Information

In order to properly dispose of end-of-life ICT products, since fiscal 2004 Fujitsu has been operating a digital management system for its products disassembly manual.

Through this system, Fujitsu recycling centers can download from our in-Group website, as animated disassembly manuals all the information they need to recycle products. In addition to providing a downloadable products disassembly manual, the system provides instructions on how to deal with items containing restricted chemical substances and plastic materials, and with products that contain customer data.



The products animated disassembly manuals



Electronic Disassembly Manual Management System

Developing a Traceability System

We developed an integrated recycling information management system and since fiscal 2007 have adopted it at the Fujitsu recycling centers.

This system prevents theft and illegal dumping by attaching barcodes to customers' ICT products and managing data on the history of the recycling process from acceptance at the recycling center through disassembly and destruction of the hard disks on a per-customer basis.

Fujitsu Integrated Recycling Process

