

## Note on using PRIMERGY TX150 S6

. Thank you for purchasing our product. Before you start using your server, please carefully read the additional notes described below.

February 2008  
FUJITSU LIMITED

### 1. Warning Messages of ServerView Remote Connector when start up the OS

#### [Symptom]

If following all conditions are met, the warning message below would be recorded on Application Event Log when start up the server.

|   |
|---|
| Type: Warning   |
| Source: ServerView Remote Connector                             |
| Event ID: 0   |
| Description:<br>Initialization not completed timely (0 seconds) |

#### [Conditions]

- 1) ServerView Agent for Windows is installed
- 2) The system is highly-loaded for start up

#### [Cause]

Because the system is highly-loaded for start up, initializing process of ServerView Remote Connector is delayed. This warning is to notify the service start up is not completed while certain period of time. This message is not for failure notice of service start up.

#### [Remedy]

Even if the message is recorded cause of the process delay as above, the service keeps running the initializing process. The service is automatically start after complete the initializing process of ServerView Remote Connector. No special handling is required.

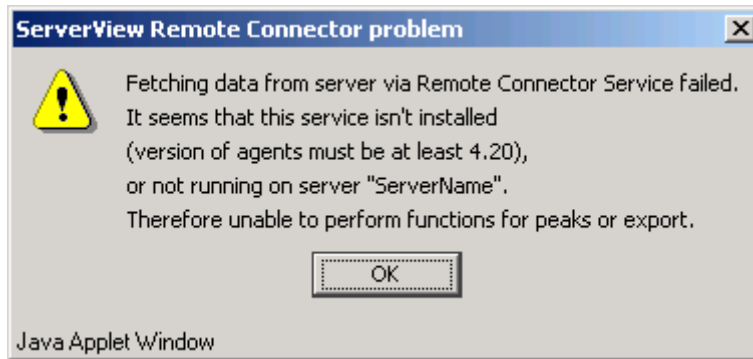
\* ServerView Remote Connector service is used as the service at the Performance Manager of ServerView. Even though this service is not active, there is no effect to the function other than Performance Manager.

#### **Note: how to confirm**

Please follow the steps below to confirm ServerView Remote Connector service runs normally.

- Start the Performance Manager from the ServerView S2.
- Select the server which you want to confirm its performance from the left side frame.
- Select the <Report View> tab.
- Select any report, and click the Show >> button.

If the graphics is displayed, ServerView Remote Connector service runs normally. Please use it without any change. If the service is not a normal run, the dialog box as below will be displayed.



Note: It is necessary to set the report setting beforehand.

For direction of Performance Manager, please refer to "ServerView User's Guide".

If the ServerView Remote Connector is not a normal run, please reboot the service with following process. (There is no necessary reboot the system.)

[Control Panel] - [Administrative Tools] - [Services] - [ServerView Remote Connector]

Do <Restart> the service

## 2. Updates for "PRIMERGY TX150 S6 User's Guide"

### Chapter 4 "4.3 Storing the System Configuration Information"

#### 4.3.1 Storing the BIOS Information and the Remote Management Controller Information (Page 82)

##### Deletion

Please delete following notes.



Do not input the file extension at the end of a file name.

The file name is given as "cmosfile" when a file name is not input.

#### 4.3.2 Recovering the BIOS / Remote Management Information (Page 83 - 84)

##### Correction

There is a misspelling on the command line.

4 Enter the following command and press the [Enter] key.

Incorrect: `A:¥SMT>BIOSRESET.bat`

Correct: `A:¥SMT>BIOSREST.bat`

##### Deletion

Please delete following notes.



Do not input the file extension at the end of a file name.

The file name is given as "cmosfile" when a file name is not input.

#### 4.3.2 Recovering the BIOS / Remote Management Information (Page 83)

##### Deletion

Please delete following misdescription.



Server Management Tools disk is required to be created when mentioned as empty "blank" on the label of the "Server Management Tools" disk, supplied with the server. Create Server Management Tools by referring to "4.4 Creating Maintenance Tools and Driver Disks" (pg.85).

## Chapter 6 "6.2 Removing and Attaching Covers"

### 6.2.1 Removing Covers

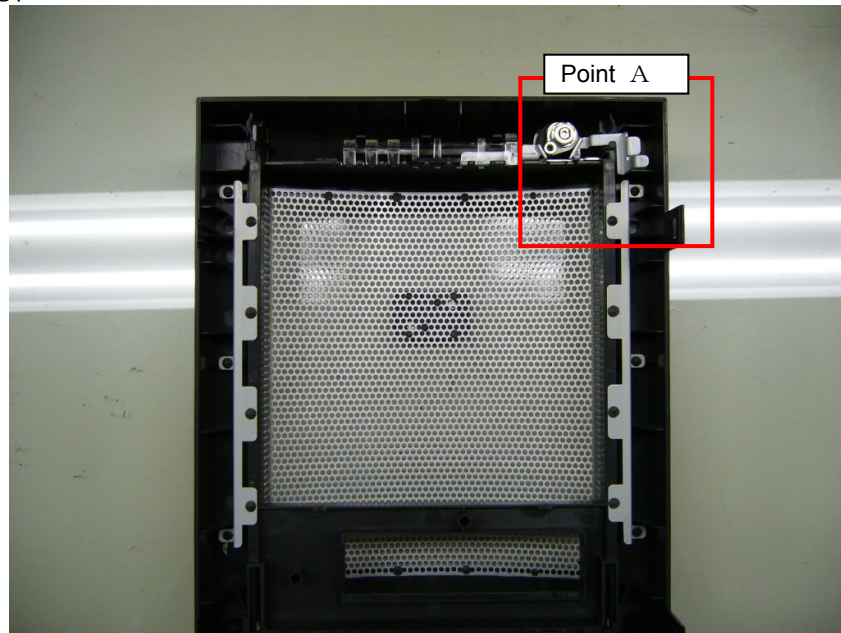
#### ■ Attaching covers (Page 116)

##### Addition

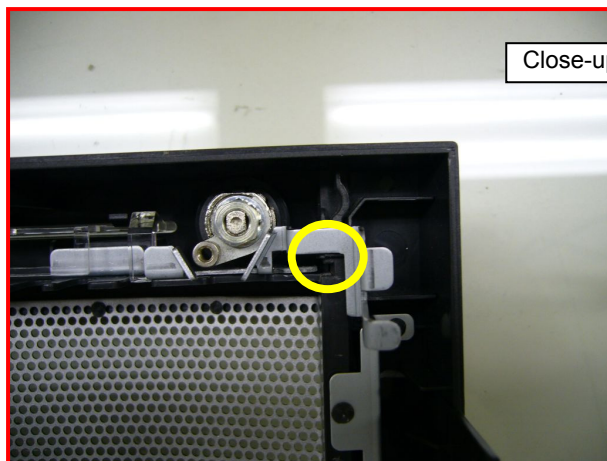
Following caution notes are added for attaching the cover description.



Before attaching the covers, flip the front cover and make sure the position of the key lock part (Point A) is settled at the *proper position*. If the key lock part is not at the *proper position*, resetting the part before attaching the covers are required. It may cause a breakage failure if you attach the covers and lock the key with wrong position.

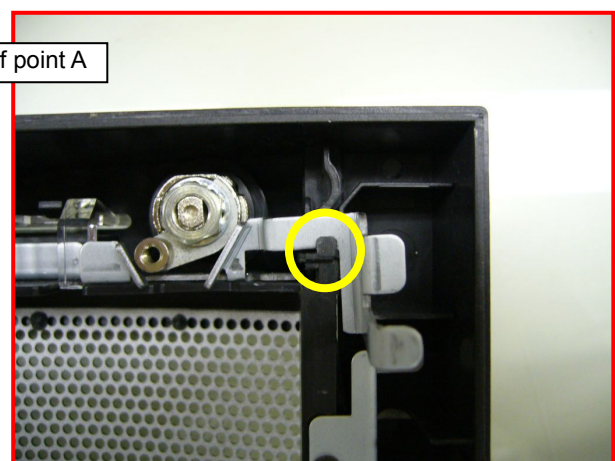


back side the front covers



Improper Position

Key lock part is unhooked (yellow circle).



Proper Position

Key lock part is hooked.

## Chapter 6 "6.6 Installing 5-inch Internal Options"

### 6.6.2 Installable 5-inch Internal Devices (Page 136)

#### Correction

Please correct the list of installable 5-inch internal devices by adding 2 units.

Incorrect:

| Unit type           | Product name                              | Product ID | Cable (separate) | SCSI ID |
|---------------------|---|------------|------------------|---------|
| Internal DAT72 unit | Tape Drv DAT72 36GB internal              | PG-DT5041  | —                | —       |
| Internal LTO3 unit  | Tape Drv LTO3 Ultrium3/ Ultrium2<br>400GB | PG-LT302   | PG-CBLS027       | 5       |

Correct:

| Unit type           | Product name                              | Product ID | Cable (separate) | SCSI ID |
|---------------------|---|------------|------------------|---------|
| Internal DAT72 unit | Tape Drv DAT72 36GB internal              | PG-DT5041  | —                | —       |
| Internal LTO unit   | Tape Drv LTO Ultrium1 100GB               | PG-LT102   | PG-CBLS027       | 5       |
| Internal LTO2 unit  | Tape Drv LTO2 Ultrium2 200GB              | PG-LT201   | PG-CBLS027       | 5       |
| Internal LTO3 unit  | Tape Drv LTO3 Ultrium3/ Ultrium2<br>400GB | PG-LT302   | PG-CBLS027       | 5       |

### 6.9 Connecting External SCSI Devices (Page 146)

#### Correction

There are misdescription about the product ID and length of cables.

Connecting Backup Cabinet

Incorrect: PG-CBLS001 (1.5m)  
PG-CBLS002 (5m)

Correct: PG-CBLS007 (1.8m)  
PG-CBLS008 (5m)