

Business
Defined
HPC
Infrastructure



PRIMEFLEX for HPC



| Application Appliance | | Reference Configuration | | |
|--------------------------------|-----------------------|-------------------------|----------------|--|
| Integration & Support services | | | | |
| Assembly, Test & Delivery | | | | |
| User workplace | HPC Gateway | | | |
| | Application Catalogue | | | |
| System design | Head node | Compute nodes | Storage | |
| | Interconnect | Rack & Power | Graphics | |
| Management software | Batch | Operation | Administration | |
| | | | | |



HPC Simplicity & Expertise

Features & Benefits

What it provides

HPC Solutions tuned for market segment specific workloads

Import application workflow expertise

“Ready-to-run” delivery

Complete solution support & services



Your Benefit

- No surprise, lower risk, simplified acquisition.
- Pre-sized to your operational requirements with matched up-scale options.

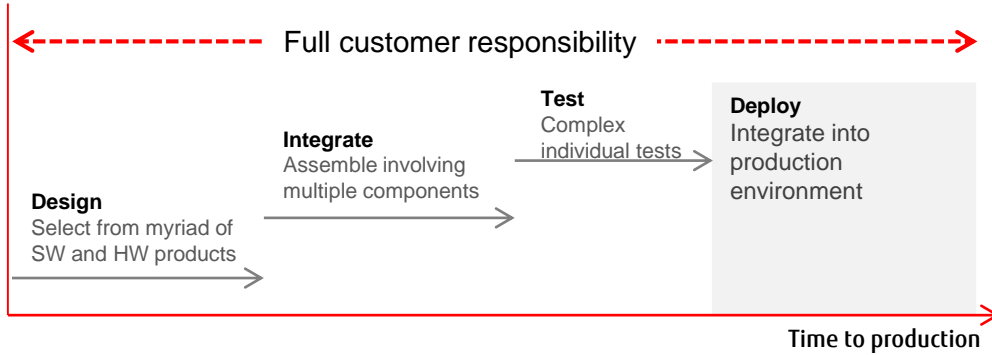
- Pre-built automated workflow packages makes HPC easier, and your team more productive.
- Leverage best-practise and validated process expertise for more economic value from HPC

- Guarantees rapid deployment for production
- Proven performance and trouble-free operation by Intel Cluster Ready certification

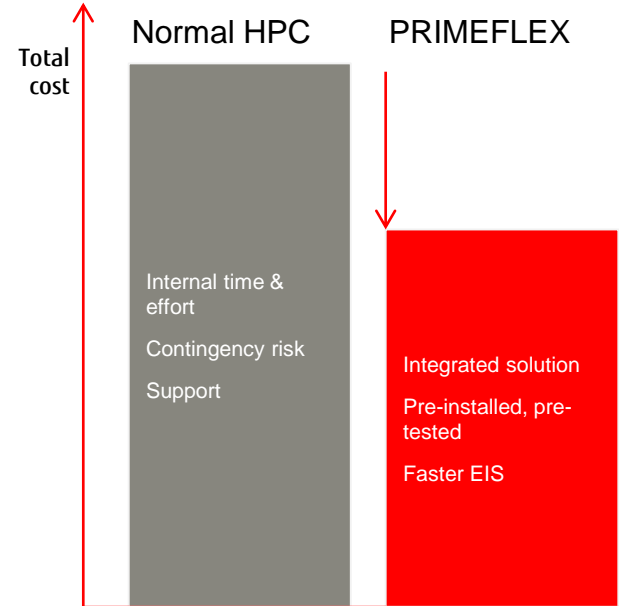
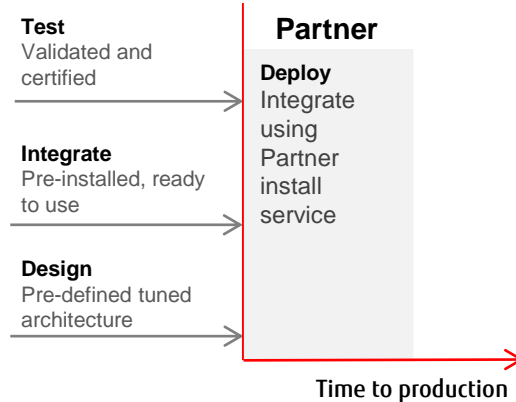
- Delivery ready for operation on-site through Fujitsu SELECT Expert HPC Partner



PRIMEFLEX Value Proposition



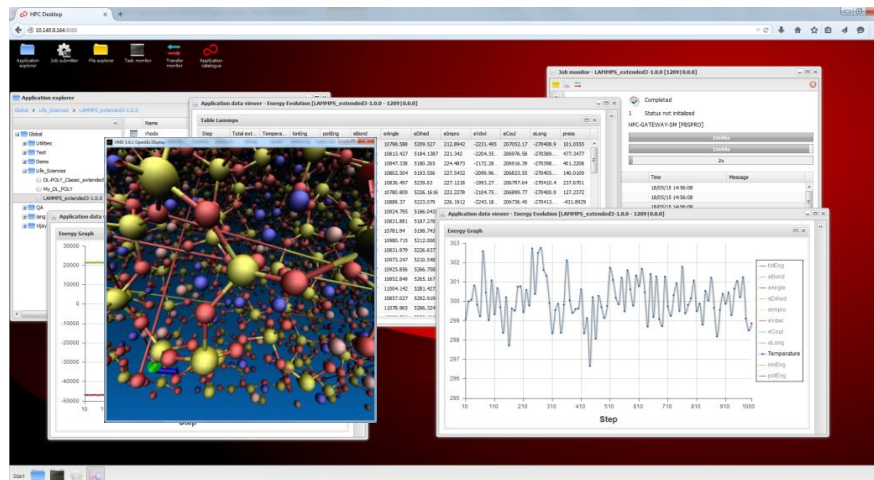
PRIMEFLEX
for HPC



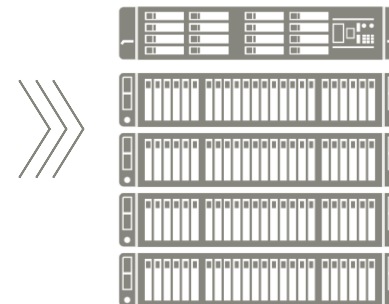
Fujitsu HPC Gateway – Broadening HPC access



Simplify HPC

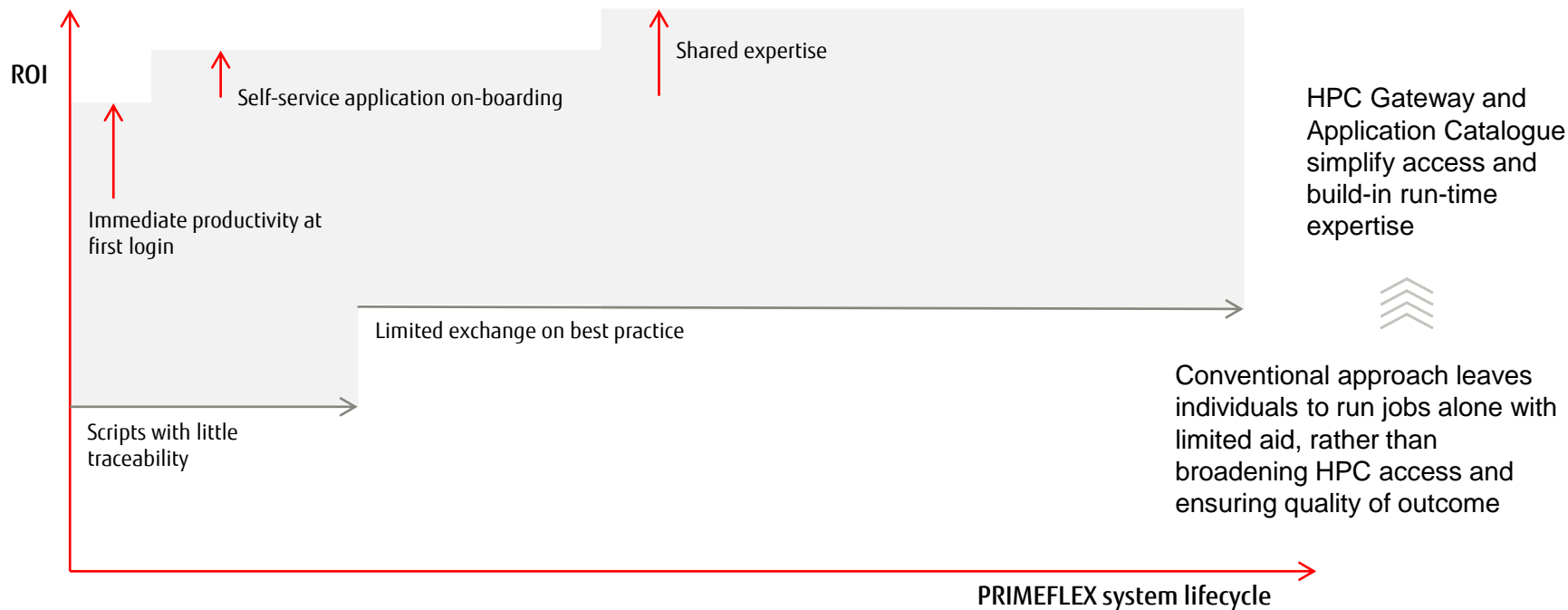


Build in Expertise

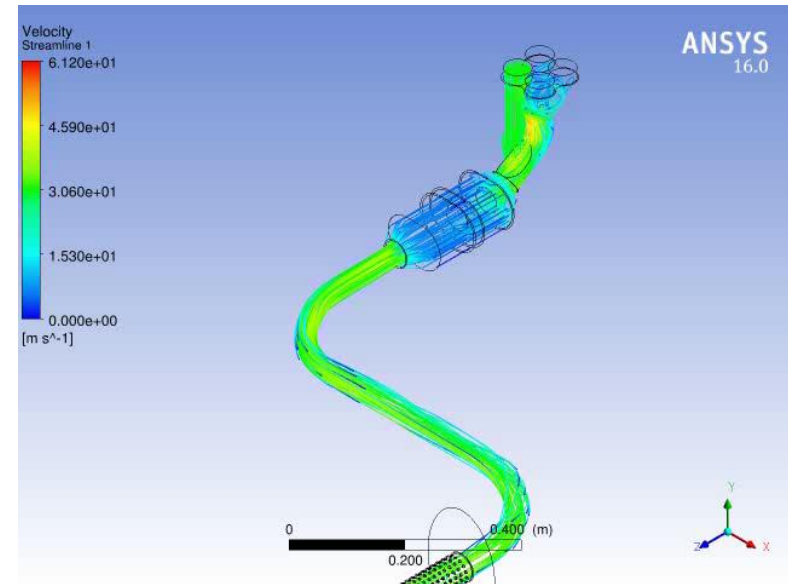
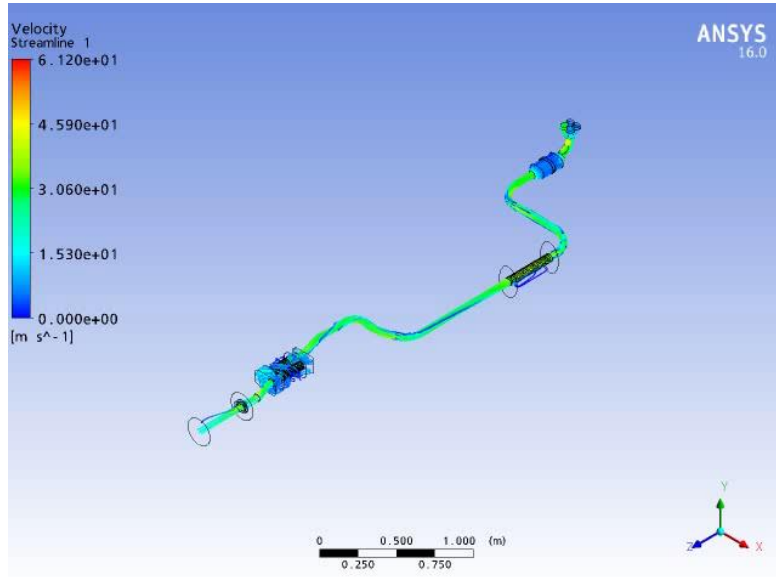


- No more scripts – Job preparation in seconds rather than hours
- HPC on the Desktop – Intuitive collaborative workplace for newcomers through to practised users
- Productive at first login – More users can work with HPC even with little/no IT skill

PRIMEFLEX for HPC Value Proposition



PRIMEFLEX Appliances



PRIMEFLEX Appliance – VRED

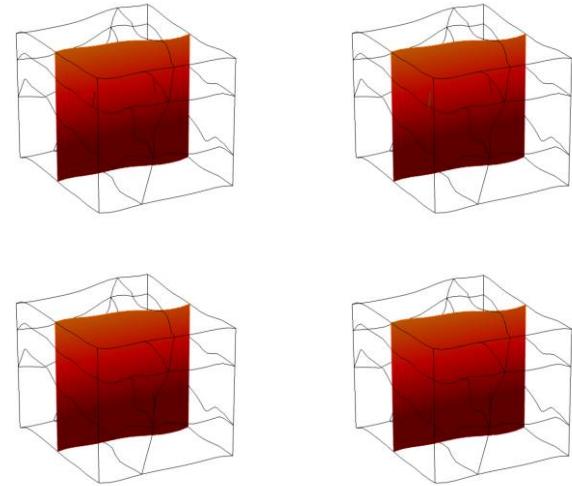
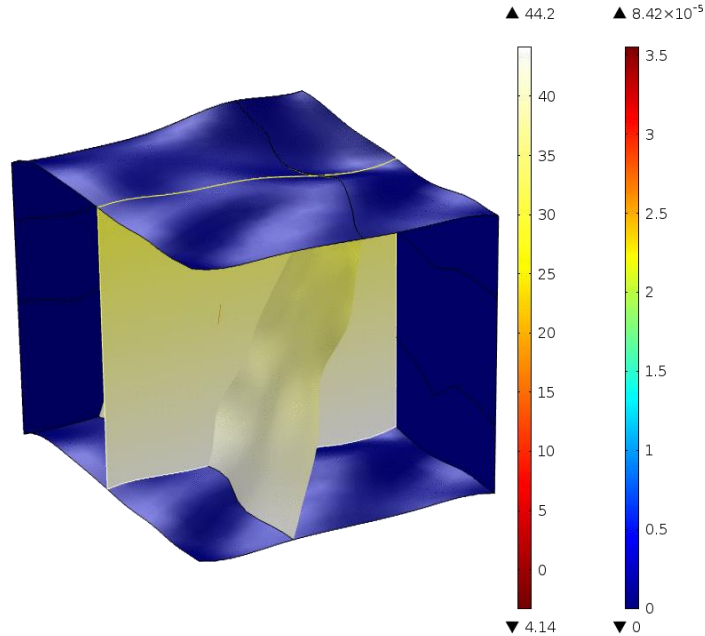


FUJITSU PRIMERGY BX400
CPU : Xeon E5-2690 (2Way)
NW : Infiniband FDR

VRED Professional 2016 SP2
Resolution : FHD
Rendering : Raytracing
Quality : Full Global Illumination
Samples : 256


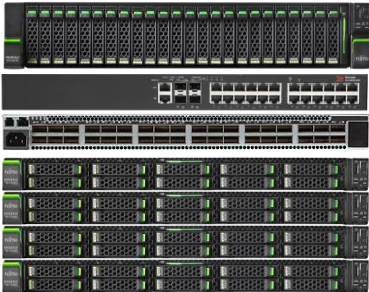
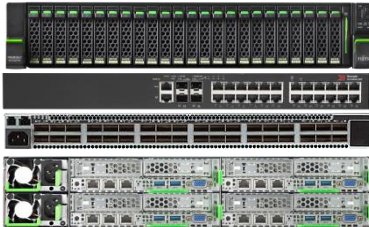




PRIMEFLEX Appliance – Comsol



PRIMEFLEX for HPC components



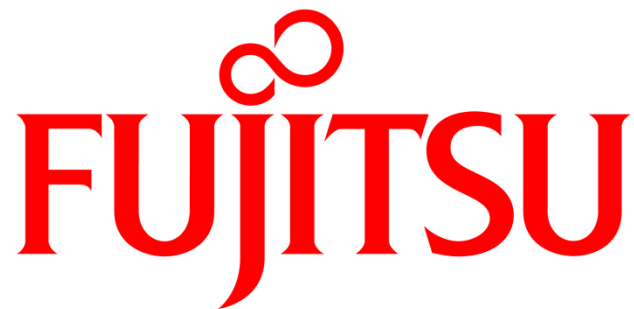
| Platform | Entry | RX | CX |
|-----------|---|--|---|
| Base |  |  |  |
| Increment | |  |  |
| Rack | None | 24U | 24U |

PRIMEFLEX For HPC Advantages



- Ready-to-run at installation
- Designed for the application
- Appliance or Reference Configuration
- No hidden costs
- Reduced risk, accessible HPC on-premise





shaping tomorrow with you