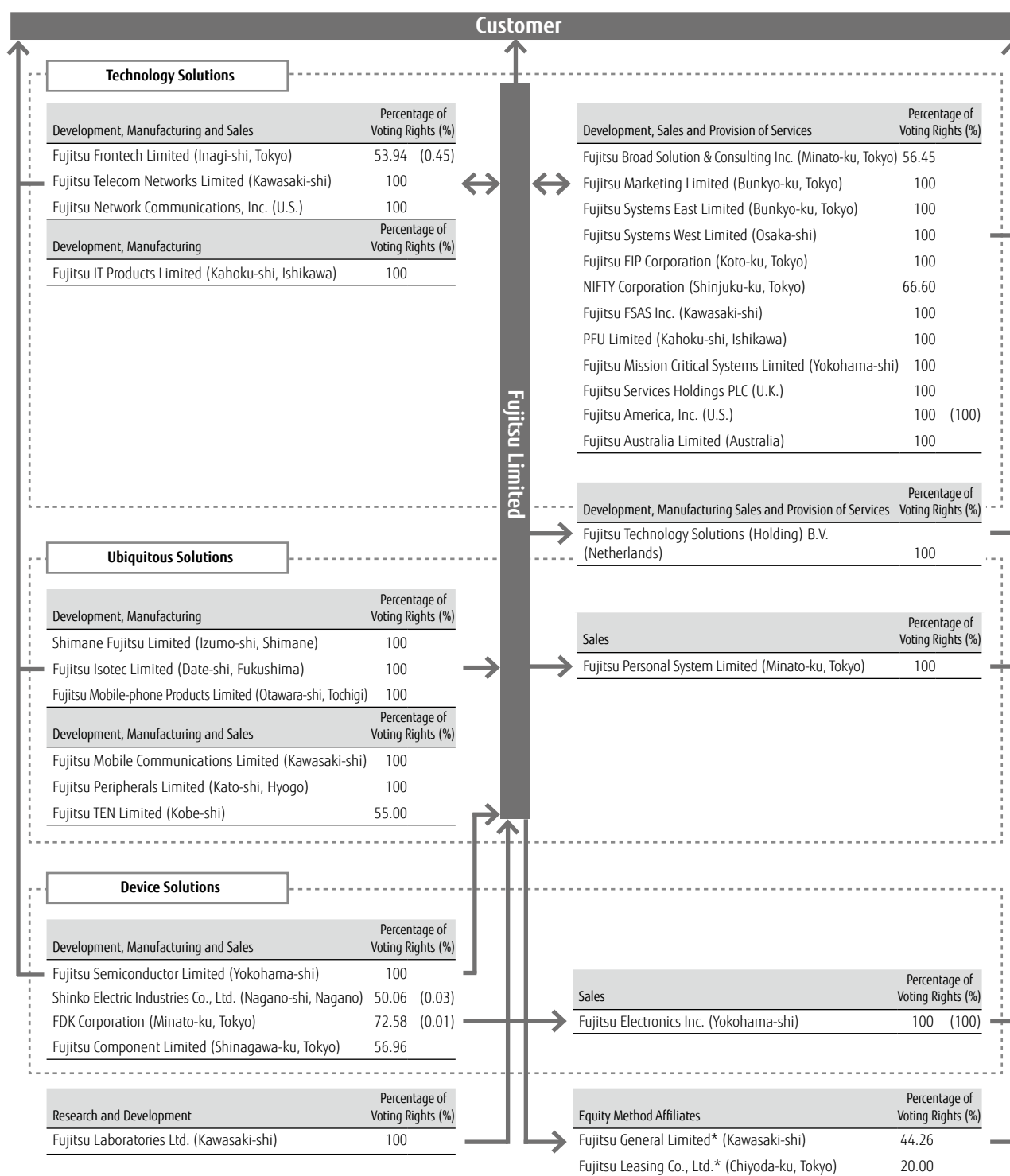


# PRINCIPAL SUBSIDIARIES AND AFFILIATES

(As of March 31, 2014)

The positioning of, and relationship between, Fujitsu Limited and its principal consolidated subsidiaries and affiliates (512 consolidated subsidiaries and 24 affiliates) are as shown in the following chart.



- Notes:
1. Among the companies listed above, subsidiaries that are listed on stock exchanges in Japan, and the exchanges on which they are listed, are as follows: Fujitsu Frontech Limited (TSE Second Section), NIFTY Corporation (TSE, 2nd section), Fujitsu Broad Solution & Consulting Inc. (JASDAQ), Shinko Electric Industries Co., Ltd. (TSE First Section), FDK Corporation (TSE Second Section), Fujitsu Component Limited (TSE Second Section), Fujitsu General Limited (TSE First Section)
  2. The company with (\*) is an equity method affiliate.
  3. Figures in parenthesis in the percentage of voting rights show indirect shareholdings and are included in the percentage.
  4. Fujitsu Mobile-phone Products Limited was integrated into Fujitsu Peripherals Limited and dissolved on April 1, 2014.