

# FUJITSU Software

## Systemwalker Desktop Keeper V15

### Software that prevents leakage of information from clients

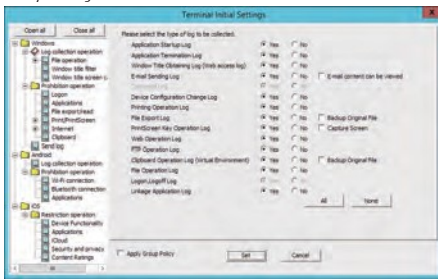
Systemwalker Desktop Keeper can record client operations to deter problematic activity, and can prevent leakage of electronic information within the organization. It also allows safe use of smart devices (Android, iOS).

**Detect, trace, identify, audit, and analyse leakage**

**Operations are retrieved as logs from clients, and recorded on Management Server**

- Application startup/exit
- Window titles and URL accessed via the web
- Print-via-spool information (print time, document name, etc.)
- File operations performed on file servers and local devices
- Device configuration changes during operation (Plug & Play, USB device mounts, etc.)
- Smart device (Android) operations, etc.

Policy settings



**Store originals of files exported to external memory**

The contents of exported files are stored together with operation logs. The contents of files intentionally or mistakenly exported can be checked at a later time.

**Tracing of unauthorized operations and identification of users**

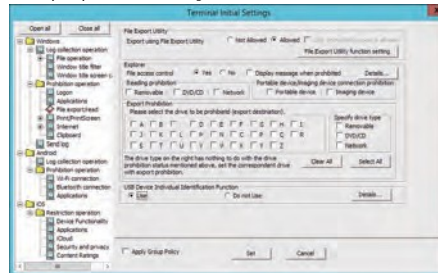
Searches, such as specifying keywords, period, timeframe, or day, can be performed for the recorded or collected logs, enabling identification of clients or users that are performing a specific operation. When able to identify files that have a risk of information leakage or being exported to an external location, it is possible to ascertain what kind of operations were performed on the applicable files, and whether they were printed.

**Prohibit unauthorized operations and prevent export/import of data**

**Forcibly prohibit various types of operations on clients**

- Starting up applications not related to work
- Disabling the PrintScreen key
- Printing from unapproved applications
- Writing to external memory (DVD/CD/USB devices, etc.)
- Writing to network drives
- Using unapproved USB devices
- Accessing unapproved URLs
- Downloading from/uploading to a web server
- Accessing an FTP server (upload/download)
- Prohibition of smart device (Android) operations (Wi-Fi connections, connecting to Bluetooth devices, starting up applications)
- Restricting execution of smart device applications (can specify times) (Android)
- Remote lock or wipe (Android/iOS)

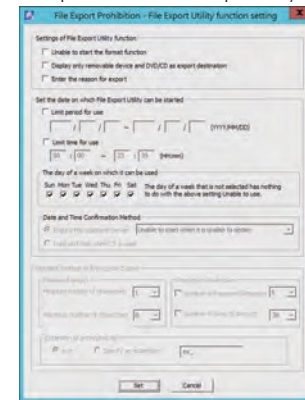
File export prohibition settings



**Improved convenience by allowing temporary release of export restrictions**

There are cases where it is necessary to export files for business purposes. In such cases, a period or timeframe can be specified within which file exporting is temporarily permitted. When the permitted period expires, the restrictions resume automatically, so there is no need to worry about remembering to put the restrictions back in place.

File Export Prohibition - File Export Utility function setting



**Displaying a list of the client status**

The operating status of clients can be ascertained at a glance in the top window, and can be managed with ease.

Furthermore, it is possible to identify clients with security policy violations, such as prohibited operations, file exports, and suspicious access, or other issues.

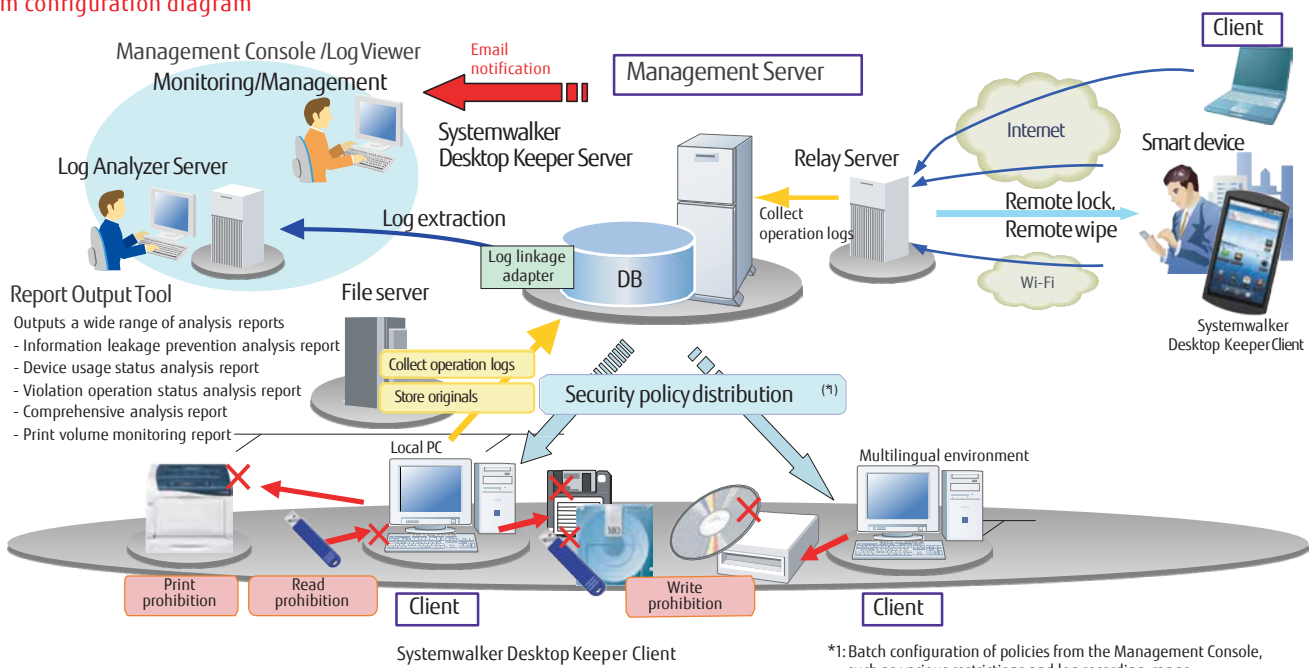
Display items (can be selected)

- Clients that are being used outside of normal hours
- Clients that are not connected to the network
- Suspicious access (starting up in safe mode, local user, operations using administrator privileges)
- Clients that performed prohibited operations (writing to USB device, printing, sending emails with attachments, starting applications)
- Clients that exported files (removable, CD/DVD, network)

Displaying a list of the client status



System configuration diagram



\*1: Batch configuration of policies from the Management Console, such as various restrictions and log recording range.

**Management Server**

A server that distributes/configures security policies for clients targeted for management, and centrally manages the various logs collected from target clients.

**Management Console**

A client that has the console feature of Management Server. Client management and group policy settings can be operated via GUI.

**Log Analyzer Server**

A server that analyzes trends for operation logs such as file operations/export.

**Client**

A client that is targeted for management.

**Relay Server**

A server that collects recorded operations of smart devices and clients, and sends them to the Management Server.

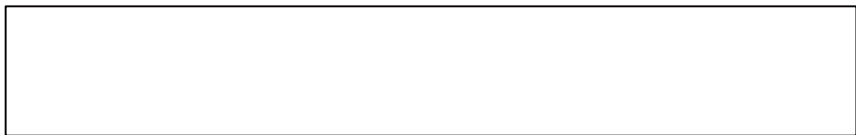
Operating environment

\*1: Refer to the website for this product for details on the operating environment.

Product name	Server operating system	Client operating system
Systemwalker Desktop Keeper V15 (V15.2)	Microsoft(R) Windows Server(R) 2016 Microsoft(R) Windows Server(R) 2012 Microsoft(R) Windows Server(R) 2008	Windows(R) 10, Windows(R) 8.1, Windows(R) 7, Microsoft(R) Windows Server(R) 2016, Microsoft(R) Windows Server(R) 2012, Microsoft(R) Windows Server(R) 2008, Android 4.4 - 8.0, iOS 6.0 - 11.0

\* Microsoft and Windows are registered trademarks of Microsoft Corporation in the USA and other countries.  
 \* Systemwalker is a trademark registered by Fujitsu Limited.  
 \* All other proper names, such as product names, may be trademarks or registered trademarks of their respective owners.  
 \* System names, product names and other proprietary names used in this document are not always accompanied by trademark symbols (TM) or (R).  
 \* The contents of this catalog are subject to change, such as for improvements, without prior notice.  
 \* This catalog is printed on recycled paper using vegetable ink.

Product information can be found on the Internet <http://www.fujitsu.com/systemwalker/>



FUJITSU LIMITED  
 Shiodome City Center, 1-5-2, Higashi-shimbashi,  
 Minato-ku, Tokyo 105-7123, Japan