

# SAP on Azure with Fujitsu

**Future-proofing SAP  
in the cloud – now**

Essential advice for moving  
your on-premise systems



## Get migration-ready

From sales to operations, and financials to supply chain, your SAP ERP systems are often at the core of your business functions. But it is natural to expect change and evolution from such business-critical technology. As such, you might be at the stage where you are thinking about moving your on-premises systems to the cloud. Key decisions need to be made as the cloud options can appear complicated. The journey to the cloud, the approach and selection influence the expected outcome, such as upgrading to S/4HANA, or a move towards a composable application approach. There may be a preference towards a public or private cloud solution or a preferred hyperscaler. Even the SAP application versions vary between public, private, on-premise types with extensible application options, and governed by specific licensing options, such as the SAP RISE model. Making those initial key decisions are critical.

Do so, and you can transform the way your business operates. Become more efficient and lower costs. Improve your performance, innovate faster by enabling advanced analytics and AI capabilities and future proof your organization. Read on to learn about the short- and long-term benefits of modernizing SAP ERP applications in the cloud. Learn what to look out for when choosing cloud and implementation partners to accelerate, simplify, and modernize your journey to the cloud, and how to begin.

# Contents



## **Why now?**

Understand the benefits now, reap the rewards sooner



## **What to consider?**

Four challenges to keep front of mind, with Microsoft Azure and Fujitsu



## **Why Microsoft Azure?**

How Azure can help you achieve your goals



## **Why Fujitsu?**

How to migrate safely and effectively



## **Ready to modernize?**

Take the first step to a solution that's right for you

## Why now?

# Understand the benefits now, reap the rewards sooner

**Many businesses initially consider moving their SAP systems to the cloud because of the growing challenges associated with managing them on-premise and the desire to digitize their business. While on-premise is an effective solution, cloud-based business systems can provide a wider range of benefits, both now and in the future.**

Of course, we live – and work – in a world of changing priorities and turbulent economic times. So, whilst your initial aims might be to become more resilient, adapt and thrive in future markets, now is the right time to consider changing to a more agile, innovative IT business process solution. An agile platform that allows you to evaluate new customer requirements and to set your sights on different goals in the future. Whatever is important for your business, beginning your migration today can benefit you massively in the short- and the long-term.

Explore the challenges associated with on-premise, along with the benefits of moving to the cloud, in the 'areas of opportunity' on the following pages.

## The smartest first step

Want to move to the cloud?

First, you need a good understanding of your existing SAP and non-SAP business applications. This includes the underlying infrastructure of your application workload, the dependencies, and the IT resources your application is consuming. You can gain complete insight from an expert-led assessment.



## Area of opportunity #1

# Process efficiency

## Traditional models versus cloud-based platforms.

Manual data centre tasks can often become expensive, time consuming whilst slowing down functions across your business.

## The in-the-cloud benefits

- **Efficiency**

A move to the cloud will remove or reduce how much you rely on manual actions. In the short term, this will drive efficiency and help you manage costs. In the long term, you will benefit from far more effective processes.

- **Agility**

In the cloud, you can rapidly provision applications as a service. Short term, this can help you respond to market changes. Long term, this can help you avoid technical and budgeting restrictions.

- **Simplicity**

Want everything in one place? Streamline your SAP ERP estate in the cloud. Enable a composable system landscape that provides selective components assembled in various combinations to satisfy specific user and business requirements. Bring together everything from infrastructure (IaaS), platforms (PaaS), and software (SaaS) that will support your evolving needs.

## How they accelerated forward

Learn how Toyo Gosei boosted overall system performance by ten times. In addition to strengthening disaster response measures by being able to make quick backups of the entire system.

[> Learn more](#) 



## Area of opportunity #2

# Game-changing insights

## Traditional models to cloud-based platforms.


If your data lives in silos, moves slowly, and is not integrated and aligned with non-SAP data, it is harder to make the right business process decisions.

## The in-the-cloud benefits

- **Speed and time to market**  
Having all your data in the cloud will dramatically increase how fast you can respond to market trends and competition. Analyse real-time data to improve service levels and enable your enterprise to develop, operate, and set up new business models quickly.
- **Operational efficiency**  
Instead of planning months ahead with predicted data, you can plan with real-time data when it is in the cloud. Improve processes across the business, rapidly identify bottlenecks and deficiencies so you can run your business efficiently, predictably, and proactively.
- **Customer experience**  
When you bring all your data together and analyse it intelligently, you can gain real, actionable insights. In the short term, this will allow you to respond to changes rapidly – and accurately. In the long term, it can help you understand your customers better which can help you improve their experience and differentiate your service.

### How they changed their game

See how AdvanSix built an ERP system that can scale effortlessly and make everyone more productive. All while cutting costs by 10%, by moving from a traditional data center.

[> Learn more](#) 



## Area of opportunity #3

# Faster innovation

## Traditional models to cloud-based platforms.

Taking too long to see value from innovation? That could be down to the time it takes to experiment, tear down, set up IT infrastructure and deploy new applications in an agile manner.

## The in-the-cloud benefits

- **Speed of innovation**

Thanks to enhanced applications and slicker processes, you can innovate faster. This means you can align your efforts with the most pressing, short-term priorities. And push ahead with new solutions when the time's right. The cloud makes it easier to exploit emerging technologies.

- **Readiness for the future**

Cloud-based SAP applications and technologies are agile and scalable. In combination with cloud adoption, plan your ERP estate and future-proof evolution capability. Consider, as an example, the SAP Business Technology Platform® (SAP BTP) as the platform for future innovation and integration. The SAP BTP enables extensibility and personalisation of SAP applications, allows connection and integration across SAP landscapes, and enables the business users to explore and experience digital business innovation. Plan your SAP S/4HANA and SaaS landscape as an integral part of your cloud transformation.

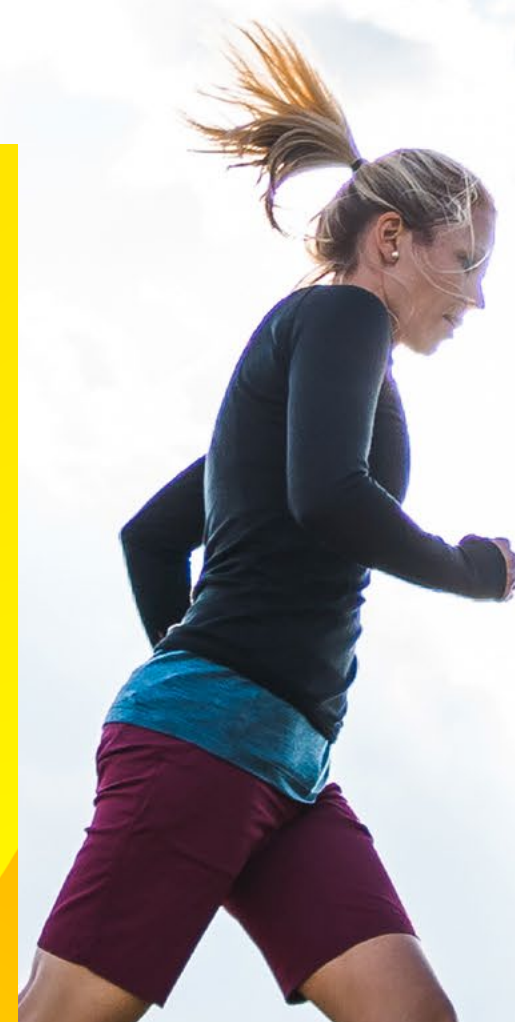
- **Rapid responsiveness**

Cloud-based SAP systems give you access to systems and data from various devices through multiple interfaces – on demand. So, whether it is a new process, service, solution, or time-critical ideas that needs fast decision-making, you have got speed on your side.

### How they faced the future

Discover how Hagihara Industries created a future-orientated system infrastructure. While lowering running costs, data backup costs, and backup-to-recovery lead time.

[> Learn more](#) 



# Top considerations from Microsoft and Fujitsu

Challenges to keep front-of-mind when taking SAP to the Cloud based on an Azure migration.



## Assessing your SAP environment

Your smartest first step is to conduct an assessment of your current environment. Often, businesses and IT departments are unaware of the utilisation and efficiency status of their business processes and underlying infrastructure. Our experts can guide you through the process - and the key things you need to think about are:

- **Understand the complexity of your SAP workloads**  
From an infrastructure perspective, Determine the sizes of each workload and related databases (velocity, volume, and variety), and requirements for seasonal elasticity.
- **Remove clutter**  
The cost of carrying around dead weight on the cloud adds up fast. Through analysis validate existing applications and processes and remove redundancy or inefficiency. Focus on having a 'clean core' start point for the move to cloud, namely transform rather than transition. The option to redeploy your core ERP business platform afresh enables organisations to reposition only those current business requirements, freeing capacity, and resources to focus on new innovations and transformation as the business grows and adapts to new emerging technologies.
- **Account for Virtual Machines (VMs)**  
Failure to allocate enough resources can result in weekly system increases.
- **Determine an Azure region strategy**  
Azure regions have global reach. Ensure the cloud infrastructure resources hosted in the region or regions that provide the optimal connectivity.





## 2 Migrating SAP to the cloud

Determine which migration strategies that best apply to your environment. Understanding what to move and when is key for migrating to Microsoft Azure.

There are differing paths you might take to migrate SAP to the Azure Cloud. Certain strategic decisions may dictate the direction of travel to Azure Cloud. From an SAP application perspective, they can be categorized as three differing types of transformation or migration:

- 1 Brownfield: Lift and Shift/Migrate to Cloud and migrate part to HANA underlying technology platform.**  
Taking SAP applications over to the cloud, migrating over certain configurations but not the entire estate, and data retention supplemented with archiving. Take the option to incorporate an upgrade to S/4HANA as part of the migration or post move to Azure Cloud.
- 2 BLUEFIELD™: Migrate Transformation to S/4HANA and Cloud and other SaaS products.**  
Migrate or upgrade your existing business process configuration and functions on Azure Cloud, and populate with selective transactional data, introduce new technology options and SaaS opportunities.
- 3 Greenfield: Begin with a new clean or partly populated clean core ERP.**  
Building a new, composable S/4HANA environment on Azure Cloud, migrating, and populating the new ERP with clean relevant configuration and part data only, introduce new technology options and SaaS opportunities.



The method you choose will depend on where you are currently in the SAP ERP Cloud journey and what your business needs. Consider the project approaches listed below, in alignment with the three migration or transformation options, Brownfield, BLUEFIELD™ or Greenfield.

## Journey to SAP S/4HANA and Cloud

- **Consider a vertical strategy for moving low-risk systems.**  
Low-risk, end-to-end systems let you evaluate your strategy and gain experience with a production environment in Azure.
- **Benefit from building low-business-impact systems.**  
Consider doing this from the start. This could lower costs and help you learn about production environments.
- **Consider the right time to move to highly critical systems.**  
Schedule your move to avoid big events like product releases, financial reporting, and projects that are going live.



## 3 Optimizing SAP applications

How to make the enhance your SAP applications in the cloud should be one of your top considerations. Again, talking with our experts can help you understand the smartest options. In the meantime, you should make sure the following is front-of-mind:

- **Azure technology and available VMs are always advancing.**  
Achieve the best possible benefits for your business by staying up to date with new capabilities.
- **Do not waste time on systems and data you do not need.**  
Make sure retired systems are not migrated. That your infrastructure inventory is accurate. And your disaster recovery plan is assessed and in place.
- **Design for high availability in your production systems.**  
Use Windows Server Failover Clustering, SQL Server Always On, and SAP features like logon groups, remote function call groups, and batch server groups.
- **Take advantage of quiet periods.**  
Lower costs by limiting Azure usage to times when teams are out of the office. Think nights and weekends.
- **Take the opportunity to adopt new technology in your application suite.**  
Undertake a business process assessment with Fujitsu's BPI specialist group, using leading edge analysis tools such as SAP Signavio to fully understand and map your new digital aligned business process-based application landscape.



# 4

## Managing SAP in the cloud, safely

Protecting critical SAP systems and business data needs to remain a top priority as you evolve. Here are the top issues to remain aware of:

- **Be clear on public cloud compliance.**  
Consider all the compliance and data security aspects of hosting data in the public cloud. Consider the Azure country regions and deployment options to ensure you meet any localization and wider regional data regulatory rules.
- **Capture all legal requirements from the start.**  
Data safety and security can be complicated. So, collaborate with the stakeholders and data owners for each application to capture all corporate and legal compliance needs.
- **Data Governance**  
Instil a data and analytical governance model to ensure data protection across the estate, such as SAP BTP Data Governance and Analytics cloud.



# Why Microsoft Azure?

## How Azure can help you achieve your goals

Microsoft Azure is uniquely positioned for SAP workloads. It can support large, enterprise-class SAP HANA based workloads. Deliver global reach with compliant, high-performance services, which allow you to create innovative new solutions faster, with ground-breaking services. What is more, the built-in threat prevention makes it more secure than on-premise security. Here is a rundown of the key features and benefits

## See beneath the surface

An SAP on Azure Assessment can help you evaluate how ready you are to migrate your workloads. It analyses your related IT infrastructure, while considering your current deployment, applications, usage, processes, and data. When you have all this, can you develop an effective strategy for migration?

### SAP technology platform readiness

Azure's VMs scale up to 11.4TiB, and large instances up to 24TB. Both are SAP HANA-certified and provide the performance SAP requires. Azure is SAP's preferred cloud provider for customers moving to the cloud.

### SAP application readiness

SAP Signavio BPI analysis gives you a total view and heat map of what and how your current business applications are performing, enabling a fully optimized application layer deployment.

### Privacy

Microsoft spends more than \$1 billion a year on cloud security. With more than eighty-five compliance certifications, it has the most compliance offerings of any public cloud provider.

### Reliability

You can rely on the highest industry uptime Service Level Agreements, with 99.99% uptime SLAs for OLAP and OLTP.

This includes integrated disaster recovery as part of all service packages, plus options for easy, economical storage.

### Analytics

By aggregating SAP and non-SAP data, you can gain a 360° view of markets, transactions, and customers.

### Capacity

With the largest SAP-certified scalability on public cloud (up to 60 TB), Azure offers the most headroom of any cloud provider.

### Global Presence

Get high-speed connectivity in 60+ regions. Availability in 140 countries and more than 1,500 peering points for express routing.



# Azure in numbers

**20+ years**

Microsoft partnering and innovating with SAP

**90+** compliance offerings

More than any other cloud provider

**60 regions**

More than any other cloud provider

**30gbps** VM to VM

World's fastest bandwidth in the public cloud

**50TB** data migration

When Microsoft migrated its own systems to Azure

**99.99%** SLAs

The most VM availability, plus S/4HANA and multi-region support



# Why Fujitsu?

The right partner for a quick and safe SAP migration.

Like with any cloud migration, moving your SAP workloads requires thoughtful preparation and strategy. Because of this, it is important to put your modernization in the safest hands. Which is where Fujitsu comes in.

When looking for the right partner to assist with implementation, you are likely to consider the following questions:

- Do they have the right credentials?
- Do they have the right approach?
- Will they understand – and be able to give me what I really need?

## Credentials

Whatever the scale of your SAP transformation, Fujitsu has the global footprint, expertise, resources, and tools to deliver it. As an SAP-certified and Microsoft Gold Partner, your migration will be in safe hands with us.

We have worked closely with Microsoft and SAP for over 30 years, implementing and managing the largest deployments around. In fact, our team is currently responsible for over 3,000 SAP systems and 800,000 users. All of which means you will get best-in-class IT from the best in the business.

Having the right blend of credentials, processes, references, and skills is important to the team behind Microsoft Azure too. Which is why they awarded us a Global Microsoft Expert Managed Service Provider (MSP) certification and an advanced specialization partner for SAP on Azure.



# Understanding

Every organization's journey to cloud is different. Most have different legacies, goals, and risks. We overcome these challenges by using our tried and tested framework – one that centres on the differences that make your business unique.

From an initial, tailored assessment, through to an exploration of how you can balance your security and troubleshooting needs – migrating SAP to the cloud is always personal with Fujitsu.

# Approach

Using our Results Chain methodology, our expert consultants collaborate with you. First, they will establish your readiness and create a framework for cloud adoption. Then accelerate your journey to the cloud through a full suite of assessment, migration, transformation, management, and optimization services to meet your business outcomes. Underpinned by deep application layer analysis of your current estate, this means you can spend more time planning and improving your business with your modern, simplified estate.

Also, because of our rich partner ecosystem, we can deliver the best, quickest, and safest migration of SAP to Azure. We use three different solutions, and our experts can help you choose the right one, depending on which suits your business best. All of these tools help to deliver a quick, smooth, and risk-free transition.

Find out more about each of them below:

- **SNP's Cloud Move for Azure solution.**
- **Azure NetApp Files**
- **Springboard™ for Azure – our own tool**

We work side by side with Microsoft, which gives us an in-depth knowledge of these products and services. You do not have to worry about the complexity of moving your SAP landscape to the cloud, because our SAP-certified experts will help you choose the right solution. Not to mention manage it for you. You will find more information about each solution over the next few pages – but you can always get in touch to talk about which one would be right for you.





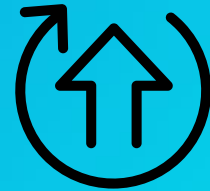
# How we do it

## SNP's Cloud Move for Azure solution

Organizations migrating to S/4HANA with a BLUEFIELD™ approach can automate the process for even the largest systems. SNP's Cloud Move for Azure solution, in the hands of Fujitsu, determines the optimal cloud sizing to map an existing SAP system to a new Azure environment. In other words, you get the transparency to identify gaps in your migration and prepare what you will need to fill them. The BLUEFIELD™ approach provides a selective data migration option to enable improved data residency and remove non-required data from the underlying storage. With this cloud-centric best practice approach, you can significantly reduce risk, improve accuracy and shorten project durations.

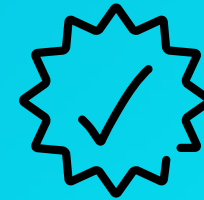
[Learn more about SNP's Cloud Move for Azure solution](#) 

Three solutions for a quick, smooth, and risk-free Azure migration:



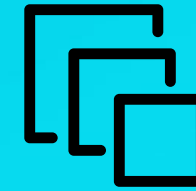
### Reduce downtime to an absolute minimum

SNP's Cloud Move for Azure solution is a near-zero downtime roadmap for migration.



### Trust a proven solution

SNP's Cloud Move for Azure solution is the proven cloud migration tool with a 100% success rate.



### Migrate at scale

Fujitsu acts as a single point of contact for various SAP and non-SAP stacks – to provide a fully managed migration.



### Know the cost ahead of time

The Fujitsu Cloud assessment service, included in SNP's Cloud Move for Azure solution, estimates the cost of migration.



### Do the complex with confidence

Fujitsu has the expertise to reduce the risk of even the most complex requirements.



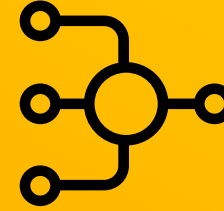
# Azure NetApp files

Simplify your storage portfolio to deliver SAP projects faster and future-proof your investments on-premise and in your hybrid cloud environment. Azure NetApp Files (ANF) can help you make best use of your data and reduce your operational management costs



## Find the right solution for you

NetApp is the only native file service certified to serve HANA in the cloud with Azure NetApp Files (ANF).



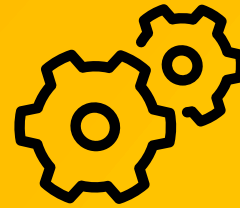
## Manage less software

Licenses for backup, monitoring, and management tools included in the ANF service.



## Increase Service Quality

Increase services pull through and productivity via parallelization. Improve SLAs to end customers.



## Reduce operational costs

There is no requirement for Network File System (NFS) configuration, maintenance, resizing, and upkeep



## Save your resources

You can offload backup processes directly from the compute virtual machine to ANF.



# Springboard™ for Azure

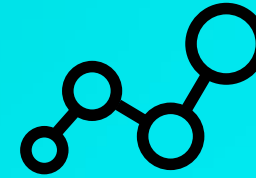
Springboard™ for Azure gives you the flexibility to easily scale, grow or pivot as your business and industry require. It is a tool you can use independently or with any third party – you receive a perpetual license to the code and blueprints to deploy Azure services and Enterprise Scale Landing Zones. Or, in partnership with Fujitsu, you can work within the eight core areas of design in the Microsoft Cloud Adoption Framework and conform to the Enterprise Scale Landing Zone guidance. It means that you will have a fully functional immutable infrastructure Landing Zone in Azure.

[Learn more about Springboard™ for Azure](#) 



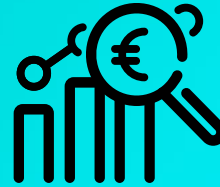
## Innovate faster

Develop new solutions faster with a quality Infrastructure as Code (IaC) library and Landing Zone templates.



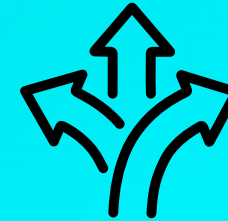
## Create value

Focus effort on your business challenge instead of foundation code and maintenance



## Save costs

Save both money and time – your Landing Zone up and running in days instead of months



## Build your future

Co-create your solution together with Fujitsu Azure experts and Springboard™.



# Ready to modernize?

Take the first step to a solution that's right for you.

The Fujitsu SAP on Azure Assessment is the first step of your adoption journey. Whatever your goals, we can review your current SAP landscape and requirements, and develop a migration approach that's right for you.

The assessment includes:

- Discovery of your digital estate
- Definition of your business outcomes and challenges, via interactive workshops
- Evaluation of your cloud maturity
- Actionable roadmap of activity to help you organize how you'll get where you want to go
- Consideration your application migration approach – whether to go Brownfield (upgrade as is to S/4HANA); Greenfield (build a new SAP environment from scratch) or BLUEFIELD™ (a selective targeted approach agreeing which applications and configurations to move across).

**To talk about taking your SAP systems to Azure, contact us today.**

[askfujitsuHQ@fujitsu.com](mailto:askfujitsuHQ@fujitsu.com) 

[fujitsu.com/sap](https://fujitsu.com/sap) 