

SAP S/4HANA®

BLUEFIELD CONVERSION SERVICES

To deliver faster SAP S/4HANA migrations,
with lower risk and lower costs



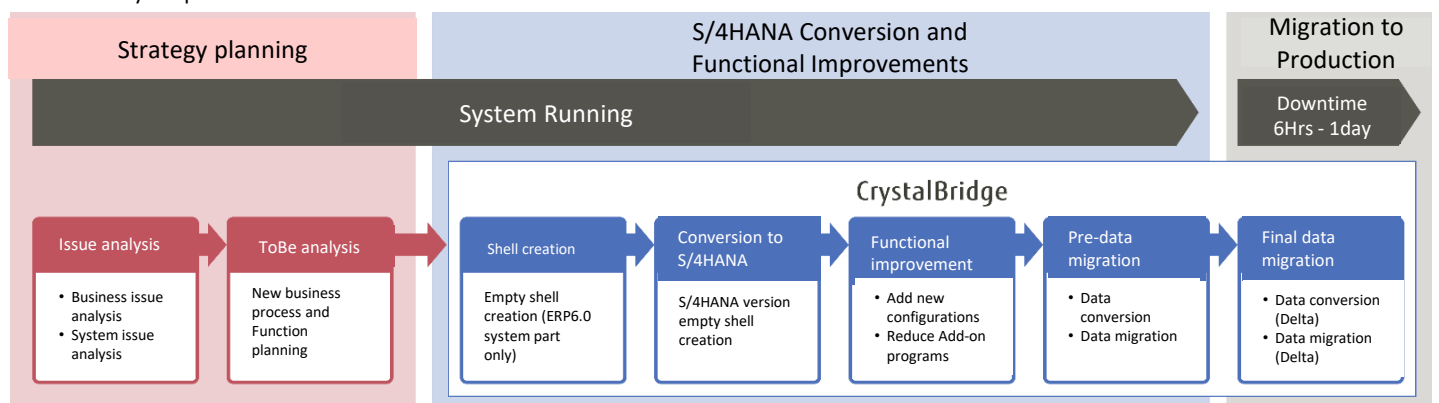
What does SAP S/4HANA® BLUEFIELD™ conversion mean?



“SAP S/4HANA® BLUEFIELD conversion” is a new conversion approach that utilizes the unique data transformation platform CrystalBridge®, (created by the German company SNP*) to deliver reliable planning and transparency during highly complex IT and business transformations.

With this new approach Data can be migrated selectively and incrementally (= delta data sets), reducing the potential business downtime associated with the conversion process, the number of add-on programs along the way and improving functionality.

By combining SNP's BLUEFIELD capabilities with Fujitsu's knowledge of SAP systems and deep expertise in manufacturing, retail, and other industries, our BLUEFIELD Conversion Services will provide quick and cost-effective solutions to businesses and systems challenges, that cannot be solved by simple conversions.



(*) Established in 1994, SNP is a global leading company in software industry which manages complex digital transformation processes. Headquartered in Heidelberg, Germany, the company employs around 1,500 people worldwide and revenues about 145 million Euros in 2019. SNP signed a global Platinum Partner Agreement with Fujitsu in 2020.



Are you facing these challenges with your existing ERP system?



The existing ERP system has been extended over time, but it is no longer compatible with some of the current business processes, as it does not give room for further improvements.

Operational load and cost during maintenance is high.



Multiple SAP instances create additional challenges for the governance processes, and increase operational costs.

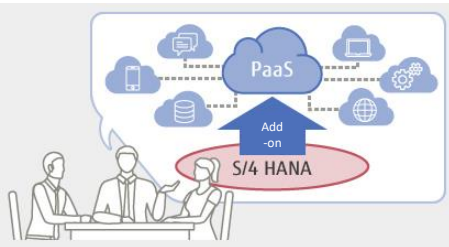
The integration of information from multiple instances is costly and related data is not always available in a timely manner.



Business has low tolerance for system downtime associated with the S/4HANA migration and system updates.

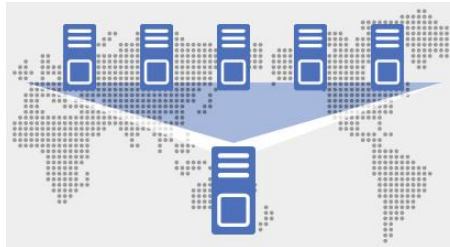
Need to define a Near-Zero Downtime strategy.

Features of Fujitsu's BLUEFIELD conversion services



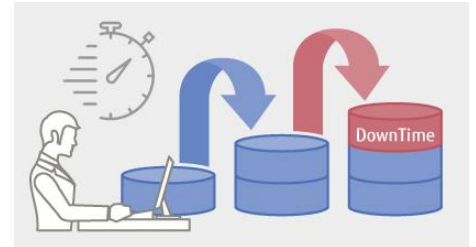
Fujitsu knowledge and BLUEFIELD = Business Transformation + Less Add-ons

The BLUEFIELD approach, based on the "CrystalBridge" data transformation platform, allows our customers to migrate data and system separately. It also helps them review business functions and carve out add-on programs from S/4HANA.



Landscape optimization according to business needs

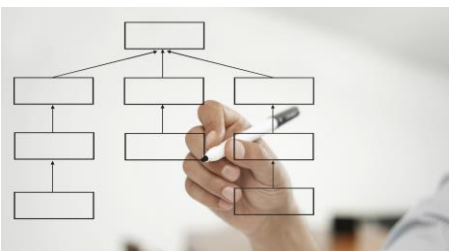
Customers running multiple instances, for different countries or business units, increasing operational load, may consider merging into a single instance. It is also possible to split instances to meet legal and data requirements of their overseas locations.



Migration with minimal downtime (Near-Zero Downtime)

While typical data migrations usually require several days for downtime, data split combined with incremental data migration can reduce the volume of data to be migrated during cutover, minimizing downtime to a few hours only.

Using BLUEFIELD conversion to transform your business



Respond to business changes due to market demand

By reviewing critical business functions, adjusting customizations and add-ons, it is possible to quickly respond to business and organizational changes, and reduce operational management load.



Reduce operation costs and strengthen governance

By merging and/or splitting instances, operating costs can be reduced, and governance can be strengthened, which creates more flexibility toward efficient change management.



Reduce System and Business Downtime

Migrate with minimal downtime to reduce the cost associated with alternative business operations and system outages during the migration.

■ This brochure is as of October 2020. Specifications, design, etc. are subject to change without notice for improvement.

■ The company name and product name are registered trademarks or trademarks of respective companies.