

Environmental Contributions to Society

We promote activities that make environmental contributions and foster mutually beneficial relationships in our communities worldwide.

Our Approach to Social Contributions Regarding the Environment

The Fujitsu Group contributes to both local and international communities through activities that aim to preserve a healthy global environment that can be passed on to future generations.

Environmental Contribution Highlights International Reforestation Activities

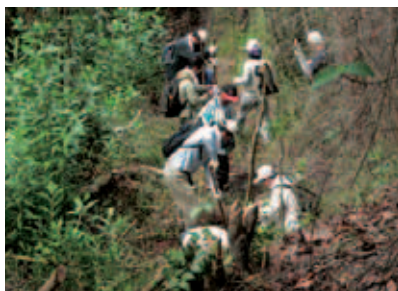
We have been supporting tropical reforestation activities in Thailand, Vietnam, and Malaysia since 1998, and have planted one million trees covering 500 hectares of land.

In November 2005, we carried out reforestation activities at the Fujitsu Group Malaysia Eco-Forest Park in Sabah State at the northern tip of Malaysia's Borneo Island.

The seedlings we planted were dipterocarp (the tree from which Philippine mahogany is made). This is an attempt to return the acacia forest, which is a foreign species planted after logging of the tropical rain forest, to the original Borneo species, the dipterocarps.

In implementing this project, employees from the Fujitsu Group in Japan, employees from business locations in Malaysia, local students, and staff from the Sabah State Forestry Development Authority formed a joint team using English as their common language. Many of the team members had participated in previous reforestation efforts at the site and were able to verify the growth of the seedlings planted previously.

In fiscal 2006 we will continue reforestation activities at the Fujitsu Group Malaysia Eco-Forest Park.



International reforestation activities (Malaysia)

 **Overseas Forestation Activities (details)**
http://www.fujitsu.com/global/about/environment/activity/e_os_forestation.html

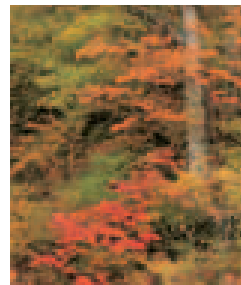
Fall Foliage Greening Campaign

In an initiative linking together community relations activities at various Fujitsu locations in Japan and intended to engage as many employees as possible, we carried out cleanup activities at streets and parks around our business locations and organized environmental fairs open to community residents. These activities were timed to take place during the fall foliage season, from October

through December 2005, and were publicized on our company intranet.

There were 57 such activities posted on the intranet this way. In addition to detailed plans for these activities, we also posted photographs of the areas where they actually took place to give a better sense of what they would be like. A total of 3,200 Fujitsu employees throughout Japan participated in these activities.

The idea for this initiative grew out of a workshop for training environmental leaders.



Amou Pass, Hida City, Gifu Prefecture



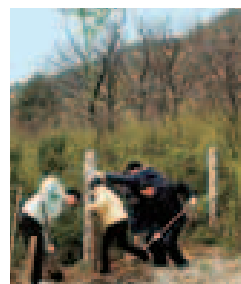
Park and walkway cleanup activity along the Koutsuki River (Fujitsu Kagoshima Branch Office)

Nature Conservation Activities in Suzhou, China

The Hua San National Forest Park (Flower Mountain) located to the west of Suzhou City has become one of China's historic locations, visited by many priests and famous people. The mountains of Suzhou have a rocky soil that is difficult for trees to take root in, and thus mountain trees are rare.

In cooperation with the park's administrator, the Environmental Management Office of Jiangsu Fujitsu has contributed to environmental preservation and helped boost safety for the local community by donating disused shipping pallets for reuse as protective fencing installed around a number of the park's centuries-old trees and "Thousand-year-old Well." Furthermore, Jiangsu Fujitsu employees participated in tree planting activities during the year, planting over 80 ginkgo, camphor, and other trees.

By continuing to take care of trees as well as repairing wooden fences and signs, we are committed to supporting the environment of this historical region.



Tree planting activity



Safety fence made from discarded pallets