



Environmental Contribution through Software Services

“IT can contribute to the global environment...”

This desire is shaping the Fujitsu Group’s vision in various ways.

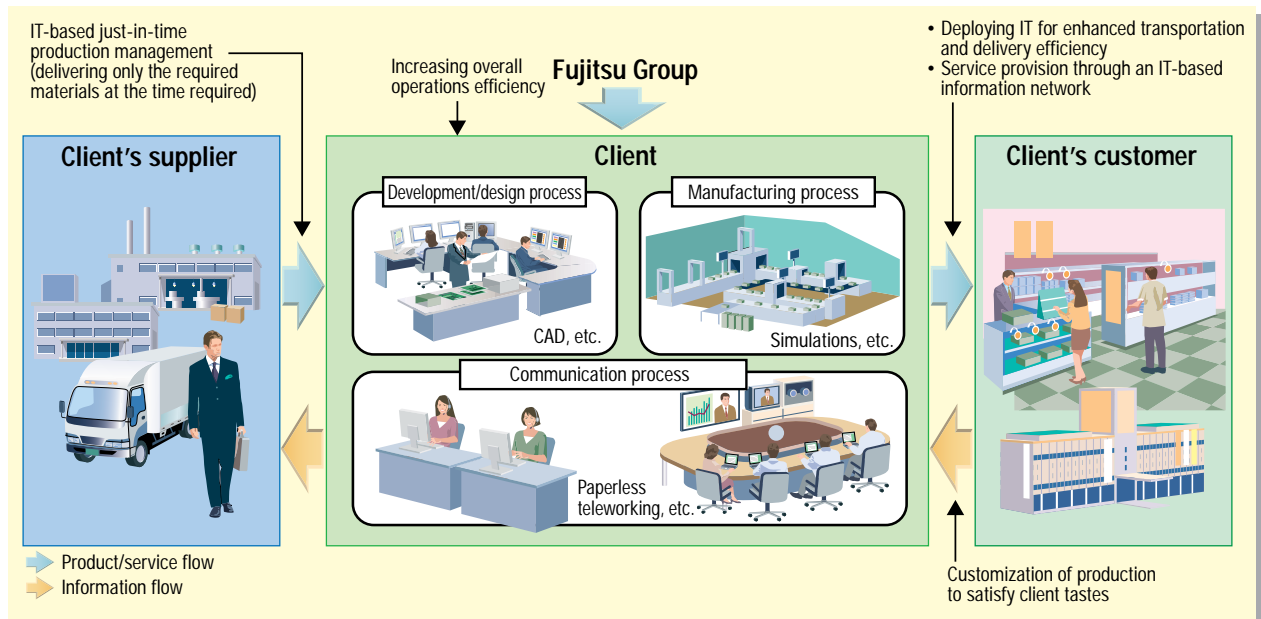
IT (information technology) can be highly effective in reducing the environmental burden imposed by society as a whole, by increasing the efficiency of human and materials transportation and production activities. Besides working hard to respond to the needs of the environment in its own business activities and products, the Fujitsu Group is helping to reduce resources and energy consumption by providing software services that make full use of IT (IT solutions) to enhance clients’ operating efficiency. Our vision of contributing to the global environment through IT has already begun to bear rich fruit.

The relationship between software services and environmental burden reduction

Various effects, such as the curbing of resources and energy consumption through increased efficiency in the areas of production, transportation and delivery, can be viewed as

environmental contributions achieved through the provision of software services to clients. The following is a summary of the relationships supporting such effects.

The relationship between software services provision and environmental burden reduction



Introduction of software services assessments

In fiscal 2001, we began introducing software services assessment and conducting trials aimed at provision of eco-friendly software services. These assessments facilitate quantitative calculation of the environmental effects exerted throughout the life cycle of the software services we offer clients.

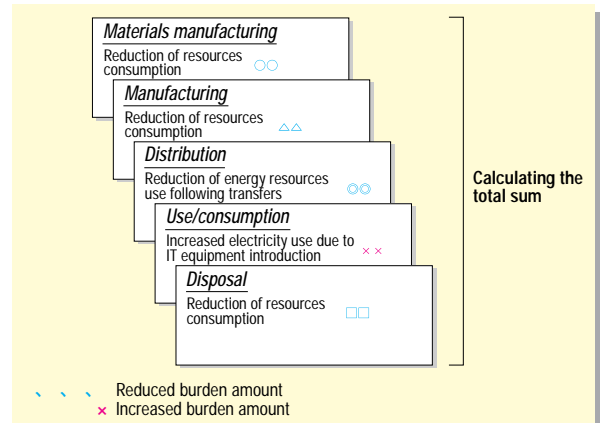
Assessment Overview

- (1) Identifying factors contributing to environmental burden reduction (reduction of resources consumption, reduction of energy resources following transfers, etc.)
- (2) Calculating factors that contribute to increasing/decreasing the burden in various life cycle stages (materials manufacturing/production/distribution/use or consumption/disposal) where any effects of the factors in item (1) occurred.
- (3) Calculation of the total sum of the effects when the effects occurred in multiple stages.

* We employed CO₂ in calculating the index for fiscal 2001.

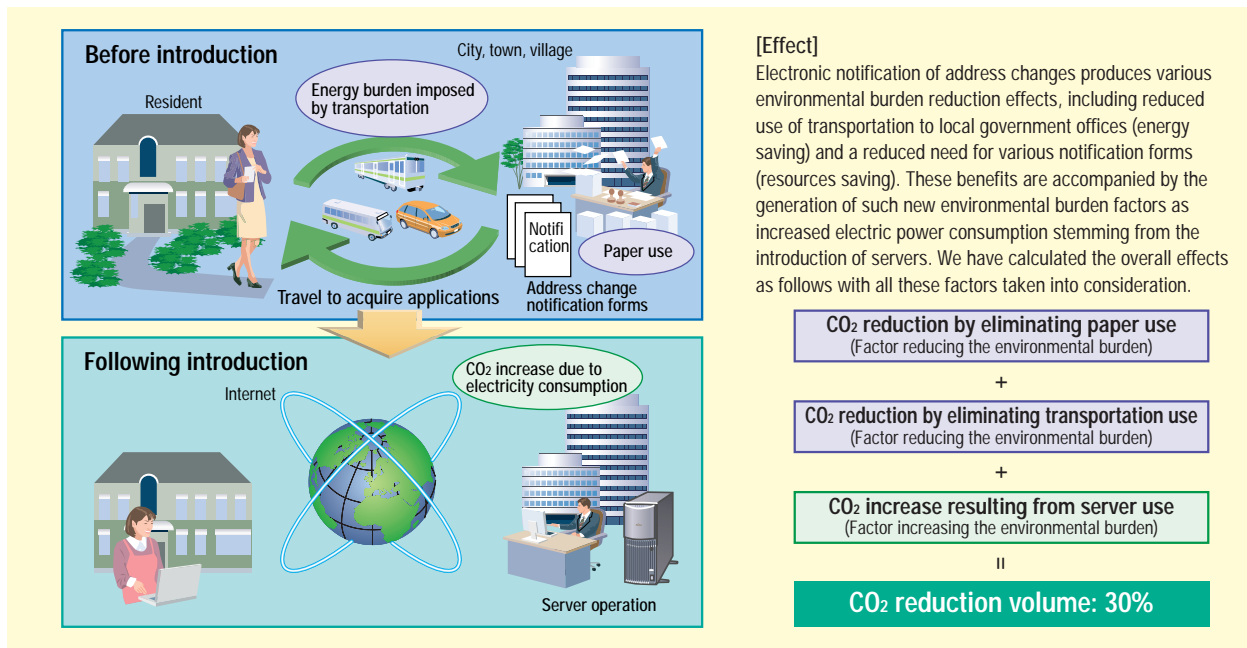
We employ this approach in an effort to provide software services that increase our clients’ resources and energy efficiency further.

Calculating the overall environmental burden reduction effect



Cases of Software Services Assessment

The environmental effect of processing address change notifications electronically (Fujitsu test calculations)

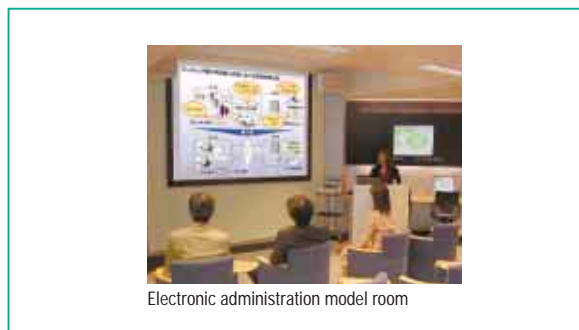


netCommunity (Model room for electronic administration)



We are employing the netCommunity to introduce various examples of environmental burden reduction through the practical deployment of IT. The netCommunity is a model room permitting actual experience of the electronic society under the e-Japan Plan*¹ being promoted by the Japanese government. The degree to which the environmental burden imposed by society as a whole can be reduced through such administrative solutions as IT-based electronic application and bidding is being introduced through easily understandable demonstrations. Please refer to the following URL for details concerning the netCommunity and its applications.

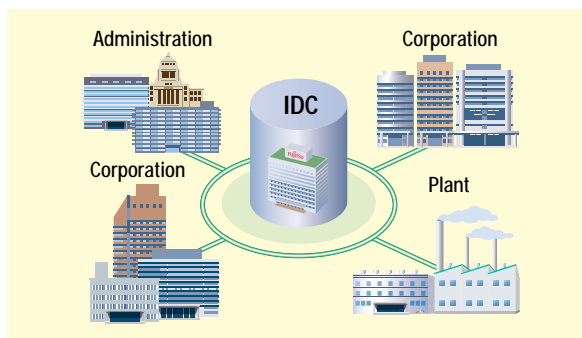
salesgroup.fujitsu.com/journal/250e/sp1.html



IDC (Internet Data Center) support for resources and energy savings

The information systems our clients construct make extensive use of equipment resources such as servers and air conditioners and consume large amounts of electric power. Fujitsu's outsourcing services utilizing the IDC* contribute to clients' resources- and energy-saving efforts by enabling sharing of servers, air conditioners and power equipment. In the future, the IDC will pursue greater resources and energy consumption efficiency in its operation as well as implementing measures concerning advances in equipment security and safety to offer optimized client support.

* IDC: A data center assuring optimal Internet networking, equipment and operating environments as infrastructure supporting the servers, networks and services Fujitsu operates.



salesgroup.fujitsu.com/journal/252e/sp1_2.html

- Establishing goals for software services in the Fujitsu Environmental Protection Program

- Establishing an internal system to certify eco-friendly software services

*1 Please refer to page 52 for definition.