

Provided by Fujitsu SAP Engineering Manufacturing Execution Solution

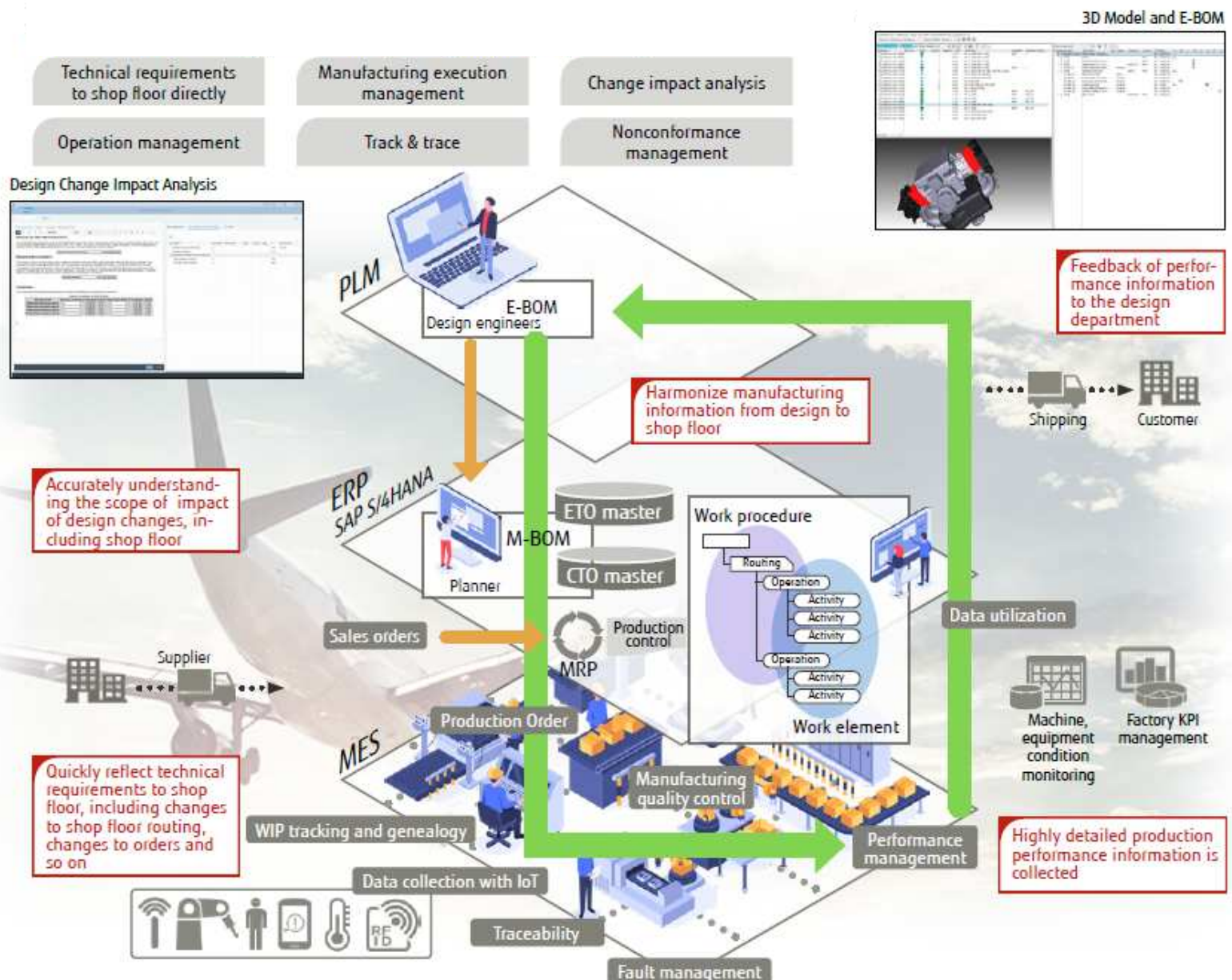
SAP S/4HANA® Manufacturing for Production Engineering and Operations

SAP S/4HANA® Manufacturing for Production Engineering and Operations (“PEO”) harmonize engineering and shop floor management information to ensure communication of design information. Digitize shop floor information and support quality management in engineering-to-order (ETO). When a design change occurs, PEO enables data connection from design to shop floor, direct instruction, and understanding of scope of impact, leading to shop floor response quickly.

SAP S/4HANA® Manufacturing for Production Engineering and Operations

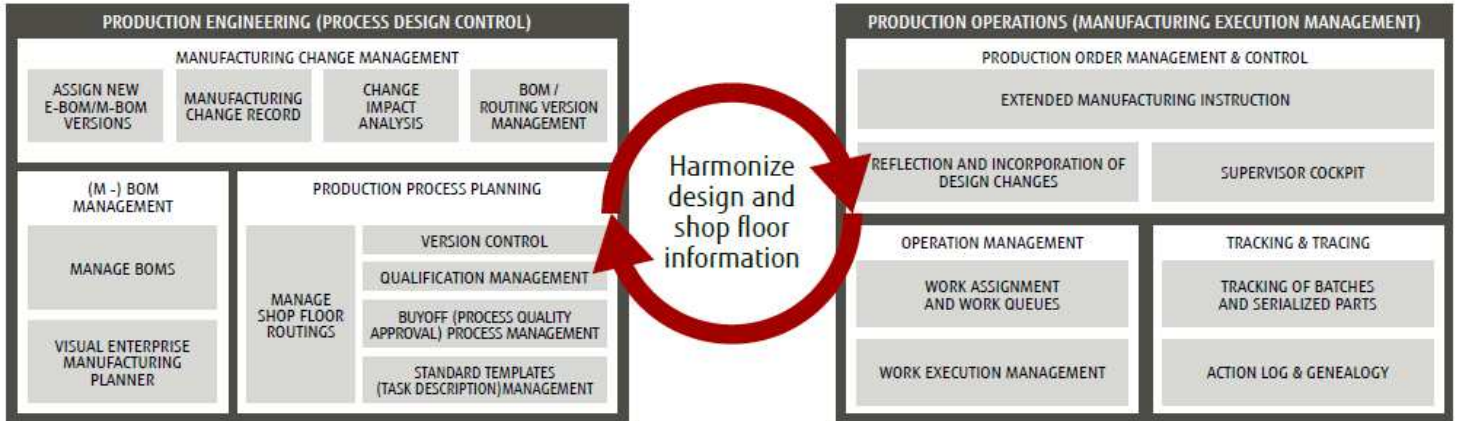
“Manufacturing DX” through the integration of design, production, and manufacturing.

Harmonize all manufacturing operations in engineering MES(PLM, ERP, and MES).



Overview and Features of SAP S/4HANA® Manufacturing for Production Engineering and Operations

In the build-to-order design and manufacturing of complex products, by integrating the ERP (Business management)/BOP (Product design → Process design → Production transfer)/Manufacturing Operations Management domain on one application platform, various changes caused by customer requirements and specification changes can be quickly communicated across department boundaries, and the entire operation can be accelerated.



FEATURE 1 INTEGRATING PRODUCTION ORDER INFORMATION (PE)

Enable consistent management of E-BOM, M-BOM, process design. Process design using 3D drawings is also enabled.

FEATURE 2 DIGITIZATION OF DETAILED SITE MANAGEMENT (PO)

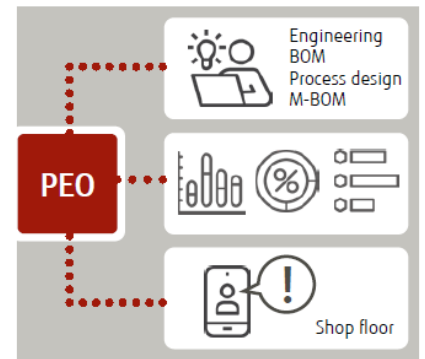
PEO is the only integrated management system which can work procedures, manufacturing version control, qualification management, tool control, buyoff (process quality approval), and work procedure management.

FEATURE 3 HARMONIZE WITH DESIGN AND SHOP FLOOR (PEO)

Production engineering and production operations are work in tandem with each other.

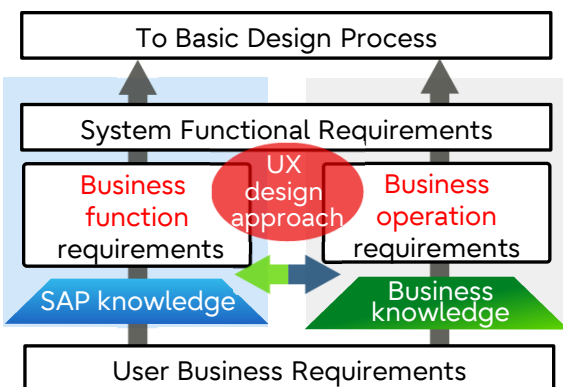
The changes from engineering quickly reflect to shop floor, using change impact analysis, visual enterprise manufacturing planner, routing management, production order change management.

This solution minimize the impact of rework or production interruptions.



Requirement definition method for solving on-site issues "UX (user experience) design approach"

We understand and organize the "utilization scenes" and "feelings" of product and service users to discover latent needs. We embody the implicit expectations of users and ideas that could not have been conceived until now.



AIM

It is possible to extract requirement ideas that would not have come out with conventional methods.

EFFECT

It is possible to extract requirement ideas that would not have come out with conventional methods. By experiencing and sharing the extracted requirements, the project can be promoted smoothly.

POINT

Since it is not just an add-on function development, it is a major premise to improve usability and maintain package standard functions.

Contact

Fujitsu Limited

Email: contact-fjmf@cs.jp.fujitsu.com

SAP S/4HANA® Manufacturing for Production Engineering and Operations

<https://www.fujitsu.com/global/services/application-services/enterprise-applications/industry/sap-industry/saps4hana-peo/>

We support the Sustainable Development Goals (SDGs)

