

Summary of Requirements

Virtuora OM

Hardware	CPU	Intel® Xeon® (8cores) or higher
	Memory	16GB or higher
	Storage	100GB or higher
	Ethernet Card	1000BASE-T 2 ports or higher
OS	Red Hat Enterprise Linux 7.2 (for Intel64)	

Virtuora RV (VIM)

(VIM controls and manages the NFVI computing, storage, and network resources)

Hardware	CPU	Intel Xeon (2 sockets/16 cores) or higher
	Memory	48GB or higher
	Storage	1.0TB×2 or higher (RAID1)
	Ethernet Card	10GBASE-SR 4 ports or higher
OS	Red Hat Enterprise Linux 7.2 (for Intel64)	

Virtuora RV (NFVI)

(NFVI builds the environments in which VNFs are deployed)

Hardware	CPU	Intel Xeon (2 sockets/20 cores) or higher
	Memory	128GB or higher
	Storage	1.0TB×2 or higher (RAID1)
	Ethernet Card	10GBASE-SR 6 ports or higher
	BIOS	PXE boot support / Hyperthreading OFF
OS	Red Hat Enterprise Linux 7.2 (for Intel64)	

- Intel and Xeon are trademarks or registered trademarks of Intel Corporation in the United States and/or other countries.
- Ethernet is a trademark or registered trademark of Xerox.
- Linux is a trademark or registered trademark of Linus Torvalds.
- Red Hat and Red Hat Enterprise Linux are trademarks or registered trademarks of Red Hat Inc., registered in the United States and/or other countries.
- The OpenStack Word Mark and OpenStack Logo are either registered trademarks/service marks or trademarks/service marks of the OpenStack Foundation, in the United States and other countries and are used with the OpenStack Foundation's permission.
- All company names, brand names, and product names described in this document are the trademarks or registered trademarks of their respective holders.

The information in this document is subject to change without notice.

This datasheet is printed on FSC® Certified Paper as designated by the Forest Stewardship Council® in order to help preserve forestry resources.

Second Edition, July 2016

FUJITSU LIMITED

<http://www.fujitsu.com/global/products/network/products/virtuora-om-rv/>



© 2015 FUJITSU LIMITED
All rights reserved
HG1065-2M

FUJITSU Network Virtuora OM FUJITSU Network Virtuora RV

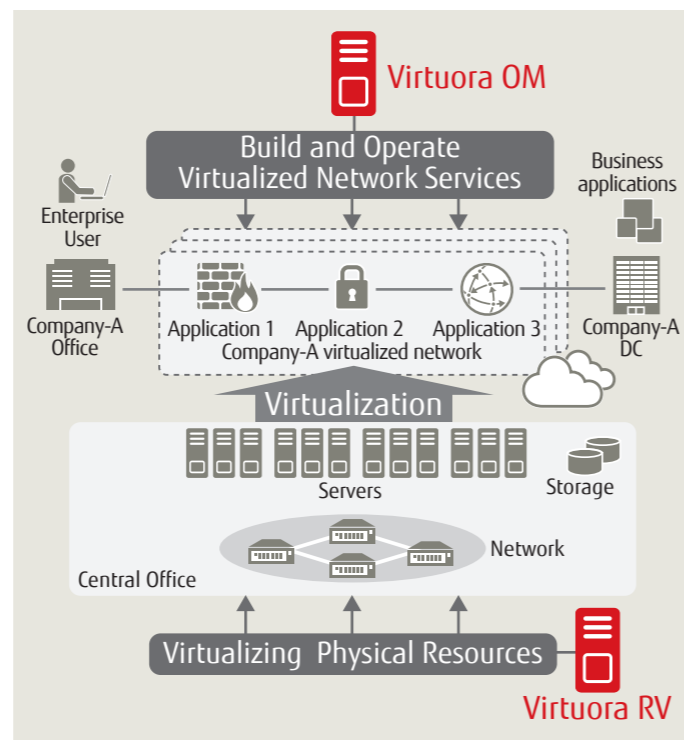
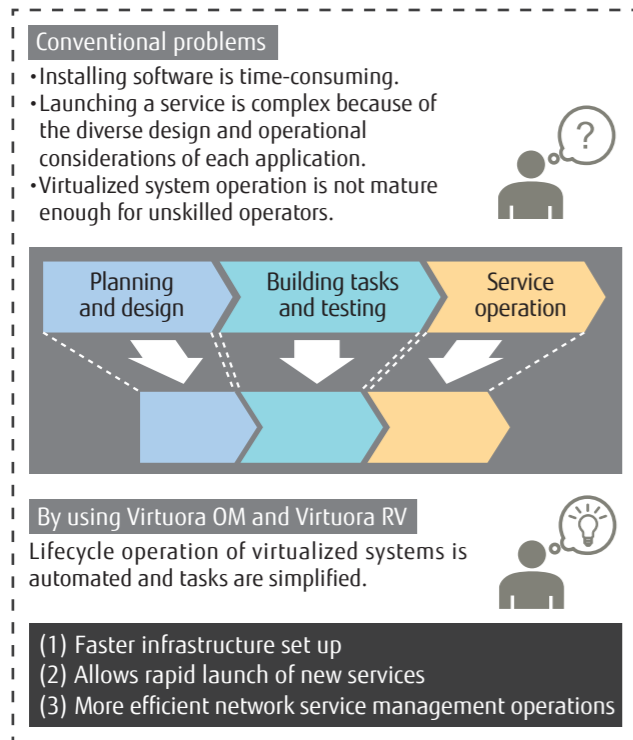
NFV Lifecycle Management Software



shaping tomorrow with you

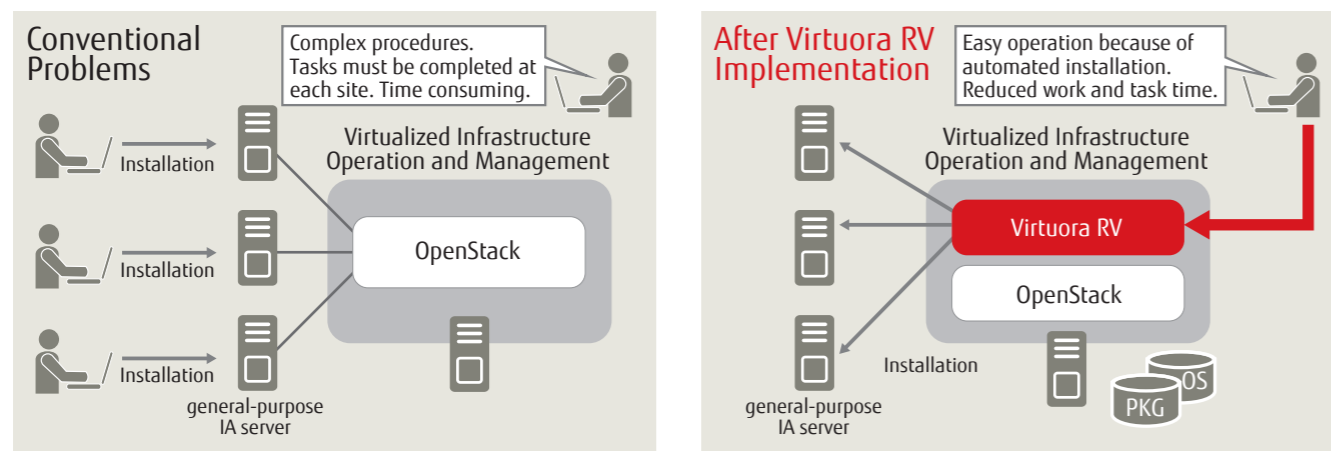
Key Features of FUJITSU Network Virtuora OM and Virtuora RV

- Virtuora OM and Virtuora RV are software stacks which enable network operators to shorten the lead time for launching new services by automating various operations during the NFV service lifecycle.
- Virtuora OM provides orchestration features to build and manage network services with virtualized network applications on virtualized resources, according to on-demand requests.
- Virtuora RV complements open source software for resource virtualization and virtualized resource management, to improve reliability and manageability.



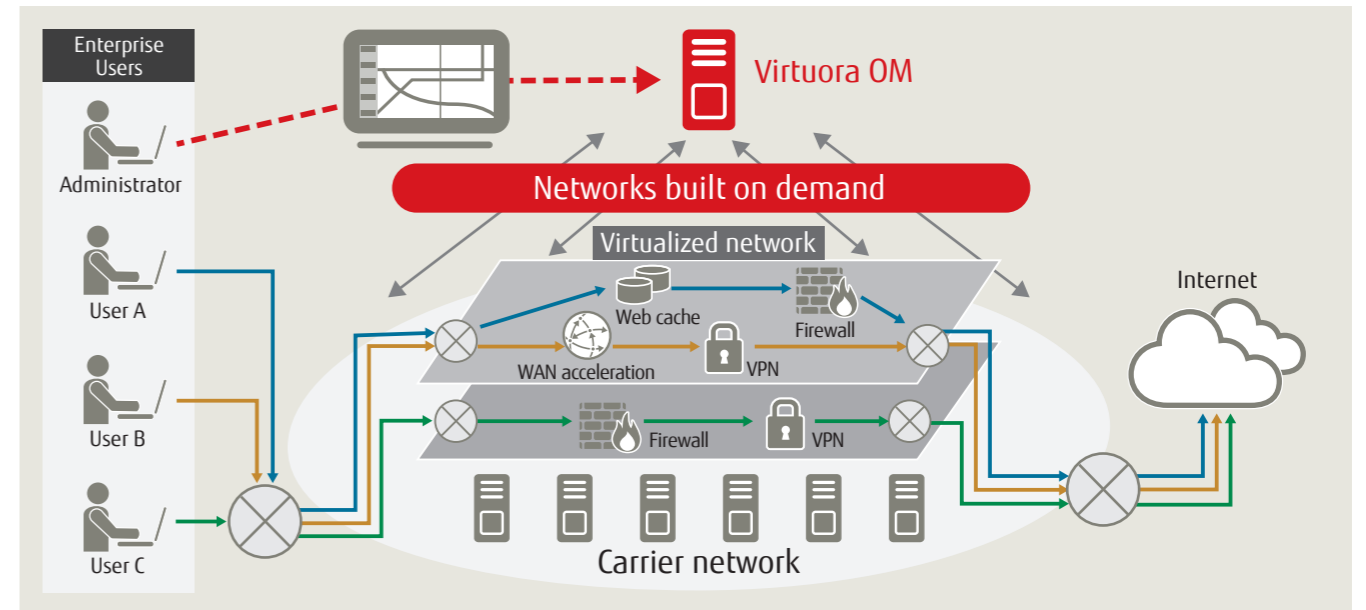
1 Faster infrastructure set up

Virtuora RV mitigates infrastructure set up tasks and prevents human errors by automating the installation of operating systems, software packages, etc.



2 Allows rapid launch of new services

Virtuora OM provides a "service-chaining function" which connects applications based on user requests. Operators can launch a new network service without manually configuring each piece of network equipment and each application. As a result, Virtuora OM enables services to be launched much more rapidly.



3 More efficient network service management operations

- Virtuora OM provides total lifecycle management (generation, monitoring and operation) of various layers of virtualized systems - network services, applications and infrastructure resources. It also provides a graphical user interface (GUI) that allows users to visualize the status of, and relationship between, the layers. These functions make decision making more intuitive and lead to efficient operations.
- Virtuora RV supplements OpenStack, which is an industry standard cloud infrastructure software platform, and improves operability and availability of life cycle management of infrastructure resources.

