

**SPARC Enterprise M3000/M4000/M5000/
M8000/M9000 Servers**

Product Notes for XCP Version 1110



Manual Code: C120-E669-01EN
January 2012, Revision A

Copyright © 2012, Fujitsu Limited. All rights reserved.

Oracle and/or its affiliates provided technical input and review on portions of this material.

Oracle and/or its affiliates and Fujitsu Limited each own or control intellectual property rights relating to products and technology described in this document, and such products, technology and this document are protected by copyright laws, patents, and other intellectual property laws and international treaties.

This document and the product and technology to which it pertains are distributed under licenses restricting their use, copying, distribution, and decompilation. No part of such product or technology, or of this document, may be reproduced in any form by any means without prior written authorization of Oracle and/or its affiliates and Fujitsu Limited, and their applicable licensors, if any. The furnishings of this document to you does not give you any rights or licenses, express or implied, with respect to the product or technology to which it pertains, and this document does not contain or represent any commitment of any kind on the part of Oracle or Fujitsu Limited, or any affiliate of either of them.

This document and the product and technology described in this document may incorporate third-party intellectual property copyrighted by and/or licensed from the suppliers to Oracle and/or its affiliates and Fujitsu Limited, including software and font technology.

Per the terms of the GPL or LGPL, a copy of the source code governed by the GPL or LGPL, as applicable, is available upon request by the End User. Please contact Oracle and/or its affiliates or Fujitsu Limited.

This distribution may include materials developed by third parties.

Parts of the product may be derived from Berkeley BSD systems, licensed from the University of California. UNIX is a registered trademark in the U.S. and in other countries, exclusively licensed through X/Open Company, Ltd.

Oracle and Java are registered trademarks of Oracle and/or its affiliates. Fujitsu and the Fujitsu logo are registered trademarks of Fujitsu Limited.

All SPARC trademarks are used under license and are registered trademarks of SPARC International, Inc. in the U.S. and other countries. Products bearing SPARC trademarks are based upon architectures developed by Oracle and/or its affiliates. SPARC64 is a trademark of SPARC International, Inc., used under license by Fujitsu Microelectronics, Inc. and Fujitsu Limited. Other names may be trademarks of their respective owners.

United States Government Rights - Commercial use. U.S. Government users are subject to the standard government user license agreements of Oracle and/or its affiliates and Fujitsu Limited and the applicable provisions of the FAR and its supplements.

Disclaimer: The only warranties granted by Oracle and Fujitsu Limited, and/or any affiliate of either of them in connection with this document or any product or technology described herein are those expressly set forth in the license agreement pursuant to which the product or technology is provided. EXCEPT AS EXPRESSLY SET FORTH IN SUCH AGREEMENT, ORACLE OR FUJITSU LIMITED, AND/OR THEIR AFFILIATES MAKE NO REPRESENTATIONS OR WARRANTIES OF ANY KIND (EXPRESS OR IMPLIED) REGARDING SUCH PRODUCT OR TECHNOLOGY OR THIS DOCUMENT, WHICH ARE ALL PROVIDED AS IS, AND ALL EXPRESS OR IMPLIED CONDITIONS, REPRESENTATIONS AND WARRANTIES, INCLUDING WITHOUT LIMITATION ANY IMPLIED WARRANTY OF MERCHANTABILITY, FITNESS FOR A PARTICULAR PURPOSE OR NON-INFRINGEMENT, ARE DISCLAIMED, EXCEPT TO THE EXTENT THAT SUCH DISCLAIMERS ARE HELD TO BE LEGALLY INVALID. Unless otherwise expressly set forth in such agreement, to the extent allowed by applicable law, in no event shall Oracle or Fujitsu Limited, and/or any of their affiliates have any liability to any third party under any legal theory for any loss of revenues or profits, loss of use or data, or business interruptions, or for any indirect, special, incidental or consequential damages, even if advised of the possibility of such damages.

DOCUMENTATION IS PROVIDED "AS IS" AND ALL EXPRESS OR IMPLIED CONDITIONS, REPRESENTATIONS AND WARRANTIES, INCLUDING ANY IMPLIED WARRANTY OF MERCHANTABILITY, FITNESS FOR A PARTICULAR PURPOSE OR NON-INFRINGEMENT, ARE DISCLAIMED, EXCEPT TO THE EXTENT THAT SUCH DISCLAIMERS ARE HELD TO BE LEGALLY INVALID.



Please
Recycle



Adobe PostScript

Copyright © 2012, Fujitsu Limited. Tous droits réservés.

Oracle et/ou ses sociétés affiliées ont fourni et vérifié des données techniques de certaines parties de ce composant.

Oracle et/ou ses sociétés affiliées et Fujitsu Limited détiennent et contrôlent chacune des droits de propriété intellectuelle relatifs aux produits et technologies décrits dans ce document. De même, ces produits, technologies et ce document sont protégés par des lois sur le copyright, des brevets, d'autres lois sur la propriété intellectuelle et des traités internationaux.

Ce document, le produit et les technologies afférents sont exclusivement distribués avec des licences qui en restreignent l'utilisation, la copie, la distribution et la décompilation. Aucune partie de ce produit, de ces technologies ou de ce document ne peut être reproduite sous quelque forme que ce soit, par quelque moyen que ce soit, sans l'autorisation écrite préalable d'Oracle et/ou ses sociétés affiliées et de Fujitsu Limited, et de leurs éventuels bailleurs de licence. Ce document, bien qu'il vous ait été fourni, ne vous confère aucun droit et aucune licence, expresses ou tacites, concernant le produit ou la technologie auxquels il se rapporte. Par ailleurs, il ne contient ni ne représente aucun engagement, de quelque type que ce soit, de la part d'Oracle ou de Fujitsu Limited, ou des sociétés affiliées de l'une ou l'autre entité.

Ce document, ainsi que les produits et technologies qu'il décrit, peuvent inclure des droits de propriété intellectuelle de parties tierces protégés par copyright et/ou cédés sous licence par des fournisseurs à Oracle et/ou ses sociétés affiliées et Fujitsu Limited, y compris des logiciels et des technologies relatives aux polices de caractères.

Conformément aux conditions de la licence GPL ou LGPL, une copie du code source régi par la licence GPL ou LGPL, selon le cas, est disponible sur demande par l'utilisateur final. Veuillez contacter Oracle et/ou ses sociétés affiliées ou Fujitsu Limited.

Cette distribution peut comprendre des composants développés par des parties tierces.

Des parties de ce produit peuvent être dérivées des systèmes Berkeley BSD, distribués sous licence par l'Université de Californie. UNIX est une marque déposée aux États-Unis et dans d'autres pays, distribuée exclusivement sous licence par X/Open Company, Ltd.

Oracle et Java sont des marques déposées d'Oracle Corporation et/ou de ses sociétés affiliées. Fujitsu et le logo Fujitsu sont des marques déposées de Fujitsu Limited.

Toutes les marques SPARC sont utilisées sous licence et sont des marques déposées de SPARC International, Inc., aux États-Unis et dans d'autres pays. Les produits portant la marque SPARC reposent sur des architectures développées par Oracle et/ou ses sociétés affiliées. SPARC64 est une marque de SPARC International, Inc., utilisée sous licence par Fujitsu Microelectronics, Inc. et Fujitsu Limited. Tout autre nom mentionné peut correspondre à des marques appartenant à d'autres propriétaires.

United States Government Rights - Commercial use. U.S. Government users are subject to the standard government user license agreements of Oracle and/or its affiliates and Fujitsu Limited and the applicable provisions of the FAR and its supplements.

Avis de non-responsabilité : les seules garanties octroyées par Oracle et Fujitsu Limited et/ou toute société affiliée de l'une ou l'autre entité en rapport avec ce document ou tout produit ou toute technologie décrits dans les présentes correspondent aux garanties expressément stipulées dans le contrat de licence régissant le produit ou la technologie fournis. SAUF MENTION CONTRAIRE EXPRESSÉMENT STIPULÉE DANS CE CONTRAT, ORACLE OU FUJITSU LIMITED ET LES SOCIÉTÉS AFFILIÉES À L'UNE OU L'AUTRE ENTITÉ REJETTENT TOUTE REPRÉSENTATION OU TOUTE GARANTIE, QUELLE QU'EN SOIT LA NATURE (EXPRESSE OU IMPLICITE) CONCERNANT CE PRODUIT, CETTE TECHNOLOGIE OU CE DOCUMENT, LESQUELS SONT FOURNIS EN L'ÉTAT. EN OUTRE, TOUTES LES CONDITIONS, REPRÉSENTATIONS ET GARANTIES EXPRESSES OU TACITES, Y COMPRIS NOTAMMENT TOUTE GARANTIE IMPLICITE RELATIVE À LA QUALITÉ MARCHANDE, À L'APTITUDE À UNE UTILISATION PARTICULIÈRE OU À L'ABSENCE DE CONTREFAÇON, SONT EXCLUES, DANS LA MESURE AUTORISÉE PAR LA LOI APPLICABLE. Sauf mention contraire expressément stipulée dans ce contrat, dans la mesure autorisée par la loi applicable, en aucun cas Oracle ou Fujitsu Limited et/ou l'une ou l'autre de leurs sociétés affiliées ne sauraient être tenues responsables envers une quelconque partie tierce, sous quelque théorie juridique que ce soit, de tout manque à gagner ou de perte de profit, de problèmes d'utilisation ou de perte de données, ou d'interruptions d'activités, ou de tout dommage indirect, spécial, secondaire ou consécutif, même si ces entités ont été préalablement informées d'une telle éventualité.

LA DOCUMENTATION EST FOURNIE « EN L'ÉTAT » ET TOUTE AUTRE CONDITION, DÉCLARATION ET GARANTIE, EXPRESSE OU TACITE, EST FORMELLEMENT EXCLUE, DANS LA MESURE AUTORISÉE PAR LA LOI EN VIGUEUR, Y COMPRIS NOTAMMENT TOUTE GARANTIE IMPLICITE RELATIVE À LA QUALITÉ MARCHANDE, À L'APTITUDE À UNE UTILISATION PARTICULIÈRE OU À L'ABSENCE DE CONTREFAÇON.

Contents

Preface ix

1. Software Requirements 1

XCP, Oracle Solaris OS and Required Patches 1

Obtaining XCP and Oracle Solaris Patches 4

Web Browser 4

2. XCP 1110 and XCP 1110-related Information 5

What's New in XCP 1110 5

Notes and Limitations 5

 Limitations for SPARC64 VII+ and SPARC64 VII Processors 6

 Notes on Active Directory 6

 Notes on LDAP/SSL 6

 Notes on Power Consumption Monitoring Function (M3000 Server) 6

 Notes on Airflow Indicator 7

 Notes on NTP Server 7

 Notes on the NTP Server Referring to the Local Clock 7

 Notes on XSCF Web 9

 Miscellaneous Notes and Limitations 10

XCP 1110 Issues and Workarounds 11

Updating to XCP 1110	12
Resetting the XSCF Firmware	12
Updating from a Version Earlier Than XCP 1050 (M8000/M9000 Servers)	12
Updating from a Version Earlier Than XCP 1070 (M8000/M9000 Servers)	12
3. Information About Software	13
Notes and Limitations	13
Notes on RCI Function	13
Notes on Remote Maintenance	14
Before Setting the Remote Maintenance Service	14
Enabling and Disabling the REMCS Agent Function	14
The Timezone Setting for REMCS Agent Function	14
XCP Issues and Workarounds	14
Known Issues and Workarounds in XCP 1110	15
XCP Issues Fixed in XCP 1110	18
XCP Issues Fixed in Releases Earlier Than XCP 1110	19
Oracle Solaris OS Issues and Workarounds	42
Oracle Solaris Issues and Workarounds for All Supported Releases	42
Oracle Solaris OS Issues Fixed in Oracle Solaris 10 9/10	48
Oracle Solaris OS Issues Fixed in Oracle Solaris 10 10/09	49
Oracle Solaris OS Issues Fixed in Oracle Solaris 10 5/09	51
Oracle Solaris OS Issues Fixed in Oracle Solaris 10 10/08	52
Oracle Solaris OS Issues Fixed in Oracle Solaris 10 5/08	56
Oracle Solaris OS Issues Fixed in Oracle Solaris 10 8/07	61
Software Documentation Updates	66
Miscellaneous Information	67
Identifying Degraded Memory in a System	67
Identifying Different Memory Sizes in a System Board	67

Using the <code>showdevices</code> Command	67
Using the <code>prtdiag</code> Command to Identify Memory Size	68
Identifying Permanent Memory in a Target Board	68
4. Information About Hardware of M3000 Server	71
Notes and Limitations	71
Notes on Hardware RAID	71
Notes on Using the Hardware RAID	71
Notes on Building or Deleting the Hardware RAID	72
Notes on Operating the Hardware RAID	72
Notes on <code>raidctl(1M)</code> Command	72
Notes on DVD Drive and Discs	73
Notes on the Use of USB Memory	73
Power Control and Operator Panel Mode Switch	73
Limitation for 1027A-Z/X1027A-Z	74
Limitation for 4447A-Z/X4447A-Z	74
Patches for Emulex PCI Express (PCIe) Adapters	74
Hardware RAID Function	75
Supported Conditions	75
Hardware Documentation Updates	75
Updates of the SPARC Enterprise M3000 Server Service Manual	76
Reactivating a Hardware RAID Boot Volume	76
5. Information About Hardware of M4000/M5000 Servers	81
Notes and Limitations	81
Notes on Server Installation	81
Notes on DVD Drive and Discs	81
Notes on the Use of USB Memory	82
Power Control and Operator Panel Mode Switch	82

Notes on Air Filter	83
Limitation for 1027A-Z/X1027A-Z	83
Limitation for 4447A-Z/X4447A-Z	83
Patches for Emulex PCI Express (PCIe) Adapters	84
Hardware Issues and Workarounds	84
Sun Crypto Accelerator 6000	84
Hardware Documentation Updates	84
6. Information About Hardware of M8000/M9000 Servers	87
Notes and Limitations	87
Notes on DVD Drive and Discs	87
Notes on the Use of USB Memory	87
Power Control and Operator Panel Mode Switch	88
Limitation for 1027A-Z/X1027A-Z	89
Limitation for 4447A-Z/X4447A-Z	89
Patches for Emulex PCI Express (PCIe) Adapters	89
Hardware Issues and Workarounds	89
DVD Drives and <code>cfgadm</code>	89
Sun Crypto Accelerator 6000	90
Hardware Documentation Updates	90
Miscellaneous Information	92
Cabinet Stabilization Measures	92
Method of Securing the Cabinet to the Floor Surface	92

Preface

These product notes contain important and late-breaking information about the SPARC Enterprise M3000/M4000/M5000/M8000/M9000 server hardware, software, firmware, and documentation, covering the latest XSCF Control Package (XCP) release.

Some references to server names and document names are abbreviated for readability. For example, if you see a reference to the M9000 server, note that the full product name is the SPARC Enterprise M9000 server. And if you see a reference to the *XSCF Reference Manual*, note that the full document name is the *SPARC Enterprise M3000/M4000/M5000/M8000/M9000 Servers XSCF Reference Manual*.

Note – Once an XCP version newer than the XCP version supported by this manual is released, only the manuals related to the new XCP version are subsequently updated. You must therefore check the manuals for the latest XCP version in addition to those related to the XCP version you are using.

Global Site

<http://www.fujitsu.com/sparcenterprise/manual/>

Japanese Site

<http://jp.fujitsu.com/platform/server/sparcenterprise/manual/>

This section includes:

- “Audience” on page x
- “How to Use This Document” on page x
- “Related Documentation” on page xi
- “Documentation Feedback” on page xiv

Audience

This notes is written for experienced system administrators with working knowledge of computer networks and advanced knowledge of the Oracle Solaris Operating System (Oracle Solaris OS).

How to Use This Document

This document is intended for all models of the M3000/M4000/M5000/M8000/M9000 servers. Read the appropriate related items depending on your server, as shown in the table below.

Chapter of This Document	M3000	M4000/M5000	M8000/M9000
Chapter 1 Software Requirements	<input type="radio"/>	<input type="radio"/>	<input type="radio"/>
Chapter 2 XCP 1110 and XCP 1110-related Information	<input type="radio"/>	<input type="radio"/>	<input type="radio"/>
Chapter 3 Information About Software	<input type="radio"/>	<input type="radio"/>	<input type="radio"/>
Chapter 4 Information About Hardware of M3000 Server	<input type="radio"/>		
Chapter 5 Information About Hardware of M4000/M5000 Servers		<input type="radio"/>	
Chapter 6 Information About Hardware of M8000/M9000 Servers			<input type="radio"/>

Chapter 1, Chapter 2, and Chapter 3 provide the information related to firmware and software for all servers. These chapters contain the descriptions which are specific to particular models, too. The relevant server name is clearly stated.

Chapter 4, Chapter 5, and Chapter 6 provide the information related to hardware. Each chapter describes each model. The information which is common in all models is provided in all of these chapters. As a result, the description may be overlapped when you retrieve the hardware-related information of multiple models.

Related Documentation

All documents for your server are available online at the following locations:

Manual	Link
Sun Oracle software-related manuals (Oracle Solaris OS, and so on)	http://www.oracle.com/documentation/
Fujitsu documents (Global Site)	http://www.fujitsu.com/sparcenterprise/manual/
Fujitsu documents (Japanese Site)	http://jp.fujitsu.com/platform/server/sparcenterprise/manual/

Note – Information in these product notes supersedes the information in the M3000/M4000/M5000/M8000/M9000 servers documentation set.

The following table lists titles of related documents.

Related SPARC Enterprise M3000/M4000/M5000/M8000/M9000 Servers Documents	Manual Code
<i>SPARC Enterprise M3000 Server Site Planning Guide</i>	C120-H030
<i>SPARC Enterprise M4000/M5000 Servers Site Planning Guide</i>	C120-H015
<i>SPARC Enterprise M8000/M9000 Servers Site Planning Guide</i>	C120-H014
<i>SPARC Enterprise Equipment Rack Mounting Guide</i>	C120-H016
<i>SPARC Enterprise M3000 Server Getting Started Guide*</i>	C120-E536
<i>SPARC Enterprise M4000/M5000 Servers Getting Started Guide*</i>	C120-E345
<i>SPARC Enterprise M8000/M9000 Servers Getting Started Guide*</i>	C120-E323
<i>SPARC Enterprise M3000 Server Overview Guide</i>	C120-E537
<i>SPARC Enterprise M4000/M5000 Servers Overview Guide</i>	C120-E346
<i>SPARC Enterprise M8000/M9000 Servers Overview Guide</i>	C120-E324
<i>SPARC Enterprise M3000/M4000/M5000/M8000/M9000 Servers Important Legal and Safety Information*</i>	C120-E633
<i>SPARC Enterprise M3000 Server Safety and Compliance Guide</i>	C120-E538
<i>SPARC Enterprise M4000/M5000 Servers Safety and Compliance Guide</i>	C120-E348
<i>SPARC Enterprise M8000/M9000 Servers Safety and Compliance Guide</i>	C120-E326

Related SPARC Enterprise M3000/M4000/M5000/M8000/M9000 Servers Documents	Manual Code
<i>External I/O Expansion Unit Safety and Compliance Guide</i>	C120-E457
<i>SPARC Enterprise M4000 Server Unpacking Guide*</i>	C120-E349
<i>SPARC Enterprise M5000 Server Unpacking Guide*</i>	C120-E350
<i>SPARC Enterprise M8000/M9000 Servers Unpacking Guide*</i>	C120-E327
<i>SPARC Enterprise M3000 Server Installation Guide</i>	C120-E539
<i>SPARC Enterprise M4000/M5000 Servers Installation Guide</i>	C120-E351
<i>SPARC Enterprise M8000/M9000 Servers Installation Guide</i>	C120-E328
<i>SPARC Enterprise M3000 Server Service Manual</i>	C120-E540
<i>SPARC Enterprise M4000/M5000 Servers Service Manual</i>	C120-E352
<i>SPARC Enterprise M8000/M9000 Servers Service Manual</i>	C120-E330
<i>External I/O Expansion Unit Installation and Service Manual</i>	C120-E329
<i>SPARC Enterprise M3000/M4000/M5000/M8000/M9000 Servers RCI Build Procedure</i>	C120-E361
<i>SPARC Enterprise M3000/M4000/M5000/M8000/M9000 Servers Administration Guide</i>	C120-E331
<i>SPARC Enterprise M3000/M4000/M5000/M8000/M9000 Servers XSCF User's Guide</i>	C120-E332
<i>SPARC Enterprise M3000/M4000/M5000/M8000/M9000 Servers XSCF Reference Manual</i>	Varies per release
<i>SPARC Enterprise M4000/M5000/M8000/M9000 Servers Dynamic Reconfiguration (DR) User's Guide</i>	C120-E335
<i>SPARC Enterprise M4000/M5000/M8000/M9000 Servers Capacity on Demand (COD) User's Guide</i>	C120-E336
<i>SPARC Enterprise M3000/M4000/M5000/M8000/M9000 Servers RCI User's Guide</i>	C120-E360
<i>SPARC Enterprise M3000/M4000/M5000/M8000/M9000 Servers Product Notes[†]</i>	Varies per release
<i>SPARC Enterprise M3000 Server Product Notes</i>	Varies per release
<i>SPARC Enterprise M4000/M5000 Servers Product Notes</i>	Varies per release
<i>SPARC Enterprise M8000/M9000 Servers Product Notes</i>	Varies per release

Related SPARC Enterprise M3000/M4000/M5000/M8000/M9000 Servers Documents	Manual Code
<i>External I/O Expansion Unit Product Notes</i>	C120-E456
<i>SPARC Enterprise M3000/M4000/M5000/M8000/M9000 Servers Glossary</i>	C120-E514
<i>SPARC Enterprise/PRIMEQUEST Common Installation Planning Manual</i>	C120-H007

*. This is a printed document.

†. Beginning with the XCP 1100 release.

Documentation CD

For the Documentation CD, please contact your local sales representative.

- SPARC Enterprise M3000 Server Documentation CD (C120-E541)
- SPARC Enterprise M4000/M5000 Servers Documentation CD (C120-E365)
- SPARC Enterprise M8000/M9000 Servers Documentation CD (C120-E364)

Manual on the Enhanced Support Facility x.x CD-ROM disk

Remote maintenance service

- Enhanced Support Facility User's Guide for REMCS (C112-B067)

Information Required for Server Operation

The latest information about the support for your server are provided on the websites.

- Message

Global Site

<http://www.fujitsu.com/sparcenterprise/msg/>

Japanese Site

<http://jp.fujitsu.com/platform/server/sparcenterprise/msg/>

- Firmware program

For the information on how to get the latest files of firmware, contact your sales representative.

The following files or document are provided.

- Firmware program file (XSCF Control Package (XCP) file)

- XSCF extension MIB (OPL-SP-MIB) definition file

Note – XSCF Control Package (XCP) : XCP is a package which has the control programs of hardware that configures a computing system. The XSCF firmware and the OpenBoot PROM firmware are included in the XCP file.

- Fault Management MIB (SUN-FM-MIB) definition file
http://src.opensolaris.org/source/xref/onnv/onnv-gate/usr/src/lib/fm/libfmd_snmp/mibs/

Documentation Feedback

If you have any comments or requests regarding this document, or if you find any unclear statements in the document, please state your points specifically on the form at the following website:

http://www.fujitsu.com/global/contact/computing/sparce_index.html

Software Requirements

This section contains the software requirements of SPARC Enterprise M3000/M4000/M5000/M8000/M9000 (M3000/M4000/M5000/M8000/M9000) servers.

- [“XCP, Oracle Solaris OS and Required Patches” on page 1](#)
- [“Obtaining XCP and Oracle Solaris Patches” on page 4](#)
- [“Web Browser” on page 4](#)

XCP, Oracle Solaris OS and Required Patches

The supported XCP and Oracle Solaris Operating System (Oracle Solaris OS) depends on the processors being installed on the SPARC Enterprise M3000/M4000/M5000/M8000/M9000 servers.

This section lists supported XCP, and Oracle Solaris OS and mandatory patches for the M3000/M4000/M5000/M8000/M9000 servers.

Note – Apply the patches in the following order. For the procedures of CPU upgrade including the patches, see *SPARC Enterprise M8000/M9000 Servers Service Manual*.

TABLE 1-1 Supported XCP, Oracle Solaris OS, and Required Patches

Server : Processors	XCP	Oracle Solaris OS	Required Patches
M4000/M5000: SPARC64 VII+ 2.66 GHz M8000/M9000: SPARC64 VII+ 3.00 GHz	1100 or later	<ul style="list-style-type: none"> • Oracle Solaris 11 11/11 • Oracle Solaris 10 8/11 • Oracle Solaris 10 9/10 • Oracle Solaris 10 10/09 • Oracle Solaris 10 5/09 • Oracle Solaris 10 10/08 • Oracle Solaris 10 5/08 • Oracle Solaris 10 8/07 	<ul style="list-style-type: none"> No patches required No patches required No patches required No patches required All patches contained in the PTF R10021 or later[†] All patches contained in the PTF R10021 or later[†] All patches contained in The PTF R10021 or later[†] All patches contained in The PTF R10021 or later[†]
M4000/M5000: SPARC64 VII 2.53 GHz M8000/M9000: SPARC64 VII 2.88 GHz	1090 or later	<ul style="list-style-type: none"> • Oracle Solaris 11 11/11 • Oracle Solaris 10 8/11 • Oracle Solaris 10 9/10 • Oracle Solaris 10 10/09 • Oracle Solaris 10 5/09 • Oracle Solaris 10 10/08 • Oracle Solaris 10 5/08 • Oracle Solaris 10 8/07 	<ul style="list-style-type: none"> No patches required No patches required No patches required No patches required All patches contained in the PTF R10021 or later[†] All patches contained in the PTF R10021 or later[†] All patches contained in the PTF R10021 or later[†] All patches contained in the PTF R10021 or later[†]
M4000/M5000: SPARC64 VII 2.4 GHz M8000/M9000: SPARC64 VII 2.52 GHz	1070 or later*	<ul style="list-style-type: none"> • Oracle Solaris 11 11/11 • Oracle Solaris 10 8/11 • Oracle Solaris 10 9/10 • Oracle Solaris 10 10/09 • Oracle Solaris 10 5/09 • Oracle Solaris 10 10/08 • Oracle Solaris 10 5/08 • Oracle Solaris 10 8/07 	<ul style="list-style-type: none"> No patches required No patches required No patches required No patches required No patches required No patches required 137137-09 119254-51 or later 125891-01 or later 127755-01 or later 127127-11

TABLE 1-1 Supported XCP, Oracle Solaris OS, and Required Patches (*Continued*)

Server : Processors	XCP	Oracle Solaris OS	Required Patches
M4000/M5000: SPARC64 VI 2.15 GHz M8000/M9000: SPARC64 VI 2.28/2.4 GHz	1040 or later	<ul style="list-style-type: none"> • Oracle Solaris 11 11/11 • Oracle Solaris 10 8/11 • Oracle Solaris 10 9/10 • Oracle Solaris 10 10/09 • Oracle Solaris 10 5/09 • Oracle Solaris 10 10/08 • Oracle Solaris 10 5/08 • Oracle Solaris 10 8/07 • Oracle Solaris 10 11/06 	<ul style="list-style-type: none"> No patches required No patches required No patches required No patches required No patches required No patches required 137137-09 No patches required 118833-36** 125100-04 or later 120068-03 or later 123839-07 or later 125424-01 or later 125075-01 or later 125670-02 or later
M3000: SPARC64 VII+ 2.86 GHz	1101 or later	<ul style="list-style-type: none"> • Oracle Solaris 11 11/11 • Oracle Solaris 10 8/11 • Oracle Solaris 10 9/10 	<ul style="list-style-type: none"> No patches required No patches required No patches required
M3000: SPARC64 VII 2.75 GHz	1091 or later	<ul style="list-style-type: none"> • Oracle Solaris 11 11/11 • Oracle Solaris 10 8/11 • Oracle Solaris 10 9/10 • Oracle Solaris 10 10/09 • Oracle Solaris 10 5/09 • Oracle Solaris 10 10/08 	<ul style="list-style-type: none"> No patches required No patches required No patches required No patches required All patches contained in The PTF R10021 or later[‡] All patches contained in The PTF R10021 or later[‡]
M3000: SPARC64 VII 2.52 GHz	1080 or later [†]	<ul style="list-style-type: none"> • Oracle Solaris 11 11/11 • Oracle Solaris 10 8/11 • Oracle Solaris 10 9/10 • Oracle Solaris 10 10/09 • Oracle Solaris 10 5/09 • Oracle Solaris 10 10/08 • Oracle Solaris 10 5/08 	<ul style="list-style-type: none"> No patches required No patches required No patches required No patches required No patches required No patches required 119254-59, 138866-01, 137137-09, 138504-04

*. If 8GB DIMM is installed on a server, update XCP to XCP 1081 or later.

†. XCP 1080 is the first XCP release for the M3000 server.

‡. For more information on the PTF, contact a sales representative or a qualified service engineer.

** Apply 118833-36 before 125100-04.

Note – You cannot boot a domain mounted with the SPARC64 VII processors using the Oracle Solaris 10 8/07 installation DVD. Use the Oracle Solaris 10 5/08 or later installation DVD to boot a domain mounted with the SPARC64 VII processors.

For additional Oracle Solaris OS information, see [“Oracle Solaris OS Issues and Workarounds”](#) on page 42.

Obtaining XCP and Oracle Solaris Patches

For the information on how to get the latest XCP firmware or the latest patch for Oracle Solaris OS, contact your sales representative.

Web Browser

Many web browsers support the XSCF Web. The browsers in [TABLE 1-2](#) have demonstrated compatibility with the XSCF Web through testing. For other information about XSCF Web, see [“Notes on XSCF Web”](#) on page 9.

TABLE 1-2 Tested Web Browser Versions

Web Browser Application	Version
Microsoft Internet Explorer	6.0/7.0/8.0/9.0
Firefox (Windows)	3.6.25/8.0/9.0
Firefox (Oracle Solaris 10)	2.0/3.5.9/3.6.22
Firefox (Oracle Solaris 11)	6.0

XCP 1110 and XCP 1110-related Information

This section describes the information about XCP 1110 and XCP 1110-related information.

- [“What’s New in XCP 1110” on page 5](#)
- [“Notes and Limitations” on page 5](#)
- [“XCP 1110 Issues and Workarounds” on page 11](#)
- [“Updating to XCP 1110” on page 12](#)

What’s New in XCP 1110

In XCP version 1110, the following new feature is introduced:

- The `restoredefault(8)` command is supported. For detail, see *SPARC Enterprise M3000/M4000/M5000/M8000/M9000 Servers XSCF Reference Manual* or XSCF man pages.
- You can specify either 1024 bit or 2048 bit as the size of the RSA host public key by SSH service. For detail, see *SPARC Enterprise M3000/M4000/M5000/M8000/M9000 Servers XSCF Reference Manual* or XSCF man pages.

Notes and Limitations

This section describes the notes and limitations at the time of this release.

Limitations for SPARC64 VII+ and SPARC64 VII Processors

You must complete the upgrades to the XCP and to Oracle Solaris OS before installing the CPU/memory board unit which is mounted with the SPARC 64 VII+ and SPARC64 VII processors on your server.

Notes on Active Directory

- While Active Directory is enabled, when you attempt to login to XSCF via the telnet, you might fail to login due to timeout of the query to secondary alternated server or later.
- If the specified timeout is too brief for the configuration, the login process or retrieval of user privilege settings could fail. In such case, specify larger value for the timeout and then execute again.

Notes on LDAP/SSL

If the specified timeout is too brief for the configuration, the login process or retrieval of user privilege settings could fail. In such case, specify larger value for the timeout and try again.

Notes on Power Consumption Monitoring Function (M3000 Server)

- The amount of power consumption might not be indicated correctly in the MIB information, in the `showenvironment power` command output, and on the XSCF Web in the following cases; and you should wait for one minute and check the value again.
 - During the server powering on or powering off, or for a while after the power-on or power-off complete
 - During the active replacement of power supply unit, or for a while after the active replacement complete
- The figures on the power consumption monitoring function represent the dissipation power from the server. The figures of peripheral devices are not included.

Notes on Airflow Indicator

- The amount of exhaust air might not be indicated correctly in the MIB information, in the `showenvironment air` command output, and on the XSCF Web in the following cases; and you should wait for one minute and check the value again.
 - During the server powering on or powering off, or for a while after the power-on or power-off complete
 - During the active replacement of power supply unit, or for a while after the active replacement complete
- The figures on the airflow indicator represent the volume of air exhausted from the server. The figures of peripheral devices are not included.

Notes on NTP Server

- We recommend the domain to use the XSCF Unit as NTP server. In this case, pay attention to the following points:
 - XSCF must be connected to an external NTP server.
 - When you connect one or more NTP servers in addition to XSCF, connect the same NTP server as XSCF is using.

For details on NTP server, contact a service engineer. For details on NTP settings, refer to the *SPARC Enterprise M3000/M4000/M5000/M8000/M9000 Servers XSCF User's Guide*.

Notes on the NTP Server Referring to the Local Clock

When the NTP server which XSCF refers to is referring to the server's own system time (local clock), and when the address of "127.127.1.0" is set to that local clock, time synchronization in XSCF might fail.

The address of the XSCF's own local clock is fixed to "127.127.1.0." On the other hand, when the address of the local clock of the NTP server which XSCF refers to is set to "127.127.1.0," the address of the clock source (refid) has the same value as the address of the XSCF's own local clock. An NTP server like this is excluded from the target of XSCF time synchronization.

You can execute the `showntp -l` command to refer to the address of the NTP server's own clock source which is set in XSCF and the address of the XSCF's own local clock.

```

XSCF> showntp -l
remote refid st t when poll reach delay offset jitter
=====
192.168.1.2 LOCAL(0) 3 u 10 1024 377 0.000 0.000 0.000
*127.127.1.0 .LOCL. 5 l 28 64 377 0.000 0.000 0.008

```

Of the two NTP server outputs, the upper (192.168.1.2) indicates the NTP server which is set by using the `setntp(8)` command. The refid is `LOCAL(0)`, which means that the local clock which has the address of "127.127.1.0" is set to the clock source of this NTP server. On the other hand, the lower indicates the XSCF's own local clock. The address of the XSCF's own local clock is fixed to "127.127.1.0." Due to this, the NTP server (192.168.1.2) is excluded from the target of XSCF time synchronization; which results in the XSCF synchronizes with its own local clock.

With any of the following measures to avoid the trouble, time can be correctly synchronized with the NTP server which is set by using the `setntp(8)` command.

- **Change the clock source that the NTP server being set in XSCF refers to**

Use the `showntp -l` command and check the clock source of the NTP server which is set in XSCF. An NTP server which indicates the refid of `LOCAL(0)` in the output is referring to the local clock which has the address of "127.127.1.0," and you should change it to refer to another clock source.

When you change the clock source of an NTP server, make sure in advance that it has no impact on other NTP clients.

- **Change the address of the local clock of the NTP server**

Of the NTP server which XSCF refers to, change the address of the local clock to "127.127.1.1," "127.127.1.2," or "127.127.1.3." Change `/etc/inet/ntp.conf` of Oracle Solaris OS. To enable the change, restart of the NTP daemon is required.

When you change the address of the local clock of an NTP server, make sure in advance that it has no impact on other NTP clients.

- **Change the stratum value of the NTP server**

Of the NTP server which XSCF refers to, change the stratum value to "1." An NTP server which has the stratum value of "1" becomes the most significant clock source and has no refid. Therefore, there is no chance that it will have the same address as the XSCF's own local clock.

When you change the stratum value of an NTP server, make sure in advance that it has no impact on other NTP clients.

- **Change the address of the XSCF's own local clock**

By using the `setntp -m localaddr=value` command, change the address of the XSCF's own local clock. In *value*, specify the least significant byte of the clock address of the local clock 127.127.1.x for *value*. A numeric from 0 to 3 can be

specified. By specifying either from 1 to 3, the address of an NTP server which is referring to the local clock does not correspond to the address of the XSCF internal local clock anymore, and a server which is referring to the local clock can also be set as the NTP server of XSCF.

Notes on XSCF Web

- Under the Windows 7 with Internet Explorer 8.0 or 9.0 environment, XSCF Web does not support the use through the built-in Administrator account.
- On Internet Explorer 8.0, when you move the on-screen horizontal frame up or down to change the frame height and use the [Monitor Msg Show/Hide] button, the screen background color may turn black. In this case, click Refresh on the View menu or press [F5] key to refresh the display, to go back to the screen right after the login.

When you moved the on-screen horizontal frame up or down to change the frame height, do not use the [Monitor Msg Show/Hide] button.

- M4000/M5000/M8000/M9000 servers:
XSCF Web does not support the External I/O Expansion Unit Manager feature. The M3000 server does not support External I/O Expansion Unit.
- M3000/M4000/M5000 servers:
Using the XSCF Web, when you import XCP or update the firmware, Session ID error may be displayed on the web browser. And in the Autologout setting, when you specify the timeout period as over 30 minutes, Internal Server Error might be displayed when you perform the firmware update. Please close the current browser and open the new browser to reconnect to XSCF Web.

M8000/M9000 servers:

Using the XSCF Web, when you import XCP or update the firmware, Session ID error may be displayed on the web browser. And Internal Server Error might be displayed when you perform the firmware update. Please close the current browser and open the new browser to reconnect to XSCF Web.

- When you use the XSCF Web under the Internet Explorer 6 or 7, or Firefox 2 environment, if a plug-in such as the search tool installed with the browser, remove the plug-in or disable the pop-up blocking.

When you use the XSCF Web under the Internet Explorer 8 or 9, or Firefox 3, 6, 8, or 9 environment, if a plug-in such as the search tool installed with the browser, disable the pop-up blocking.
- When you use XSCF Web under the Firefox 3, 6, 8, or 9 environment and attempt to log in to XSCF, you may be prompted by the browser to save the login ID/password. In this case, do not save the login ID/password. If you save the login ID/password, the stored data can be displayed unexpectedly on the LDAP, SMTP and REMCS web pages.

Use one of two settings described below, to disable the browser's ID/password remember function:

- Disable the entire browser ID/password remember function.

Click on the [Tools] menu, and select [Preferences]. On the [Security] panel, see [Passwords] and uncheck the [Remember passwords for sites] checkbox.

- Designate the XSCF Web address as an exception to the ID/password save operation.

Click on the [Tools] menu, and select [Preferences]. On the [Security] panel, see [Passwords] and check the [Remember passwords for sites] checkbox. Then, on the dialog for the ID/password saving which appears in the login attempt to XSCF, click the [Never for This Site] button. As a result, the XSCF Web address will be registered in the [Exceptions] list to the ID/password save operation, and the dialog to prompt the ID/password saving will no longer be displayed in the subsequent login attempts to XSCF.

Miscellaneous Notes and Limitations



Caution – M4000/M5000/M8000/M9000 servers:

For dynamic reconfiguration (DR) and hot-plug issues, see [“Oracle Solaris OS Issues and Workarounds” on page 42.](#)

- M4000/M5000/M8000/M9000 servers:

The following functions displaying the power consumption is not supported on M4000/M5000/M8000/M9000 servers.

- `power` operand of the `showenvironment(8)` command
- XSCF Web

Note – Invalid values will be displayed by executing the commands or menu. SNMP Agent Function obtains invalid values of power consumption.

- M4000/M5000 servers:

The M4000/M5000 servers are cold service machines. Hot-swapping of the CPU module (CPUM), memory board (MEMB), I/O unit (IOU), or XSCF unit is not supported.

- M8000/M9000 servers:

Do not use the internal CD-RW/DVD-RW drive unit and the TAPE drive unit at the same time.

- The log archive feature by the `setarchiving(8)` and the `showarchiving(8)` commands, and the [Log Archives] menu of XSCF Web is not supported.

- When you use the external power control interface of the external power controller, the following notification signals are not supported:
 - The OS panic or the server hardware error signal (*CPUN/RTNU)
 - The server hardware error signal (power fail, temperature error, and fan error) (*ALARM)
- M8000/M9000 servers:
On the M8000/M9000 servers with XCP 1050 or later, the dual XSCF Unit feature is working. Therefore, you can not downgrade M8000/M9000 servers with XCP 1050 or later to XCP 1040 or XCP 1041, which does not support dual XSCF Unit feature.
- You cannot use the following user account names, as they are reserved for system use: `root`, `bin`, `daemon`, `adm`, `operator`, `nobody`, `sshd`, `rpc`, `rpcuser`, `ldap`, `apache`, `ntp`, `admin`, `proxyuser`, and `default`.
- XSCF-LAN is compliant with auto-negotiation. When you connect XSCF-LAN and the network device which has been fixed to the full-duplex mode, according to the IEEE 802.3 rule, XSCF-LAN communicates in the half-duplex mode. Due to this, network communication speed may slow down or communication error may occur. Do not fail to set the network device which connects with XSCF-LAN to the auto-negotiation mode.
- M4000/M5000/M8000/M9000 servers:
While you are performing DR operation to a COD board, do not execute the `addcodactivation(8)/addcodlicense(8)/deletecodactivation(8)/deletecodlicense(8)/setcod(8)` command.
- At this time the `-e`, `-l`, `-P` options of the `snapshot(8)` command are not supported.
- An XSCF user account user name cannot match an LDAP user name, and an XSCF user account number (UID) cannot match an LDAP UID number.
- In case that any failure occurred on a system board and failed to read the FRU information of system board, XSCF regards the system board as a COD board. The `showboards -va` command displays the COD status as "y." In this case, replace the failed system board.

XCP 1110 Issues and Workarounds

For known XCP issues and possible workarounds in XCP 1110, see [“Known Issues and Workarounds in XCP 1110” on page 15](#). For fixed XCP issues in XCP 1110, see [“XCP Issues Fixed in XCP 1110” on page 18](#).

Updating to XCP 1110

To update your XCP to XCP 1110, please pay attention to the following points depending on your current XCP version.

You can upgrade to XCP 1110 from XCP version 1050 or later. Refer to the *SPARC Enterprise M3000/M4000/M5000/M8000/M9000 Servers XSCF User's Guide* for instructions.

Resetting the XSCF Firmware

After updating the XCP firmware to 1110, do not fail to reset the XSCF by using the `rebootxscf(8)` command.

Updating from a Version Earlier Than XCP 1050 (M8000/M9000 Servers)

- You cannot update to XCP 1110 directly.
If you are currently running a version earlier than XCP 1050, you must first update to an interim version of XCP between 1050 and 1070 (inclusive) before updating to XCP 1110. Refer to the product notes document for the interim version for instructions.
- Delete any accounts named "admin".
Any accounts named admin must be deleted prior to updating to XCP 1050 or later. This account name is reserved in XCP 1050 and later. Use the `deleteuser(8)` command to delete the account.

Updating from a Version Earlier Than XCP 1070 (M8000/M9000 Servers)

On a domain which has been in operation during the XCP update to 1110, when you perform Dynamic Reconfiguration (DR) to add or replace the SPARC64 VII processors, you need to update the OpenBoot PROM firmware. The OpenBoot PROM firmware is updated as you update the XCP and restart the domain. For this reason, it is strongly recommended to restart all the domains after you update the firmware to XCP 1110, regardless of whether you added or replaced the SPARC64 VII processors.

Information About Software

This section describes the special instructions and the issues about the M3000/M4000/M5000/M8000/M9000 servers software.

- “Notes and Limitations” on page 13
- “XCP Issues and Workarounds” on page 14
- “Oracle Solaris OS Issues and Workarounds” on page 42
- “Software Documentation Updates” on page 66
- “Miscellaneous Information” on page 67

Notes and Limitations

Notes on RCI Function

The RCI function is supported on any of the following servers.

- The server which you purchased in Japan from Fujitsu
- The server which is bearing the Fujitsu logo on the front surface, regardless of area of purchase^{*1}

When using the RCI function such as RCI build procedure, see the *SPARC Enterprise M3000/M4000/M5000/M8000/M9000 Servers RCI Build Procedure* and the *SPARC Enterprise M3000/M4000/M5000/M8000/M9000 Servers RCI User’s Guide*.

^{*1}. This refers to the server which has the black-colored chassis and is exclusively bearing the Fujitsu logo on the front surface.

Notes on Remote Maintenance

This section is explained the notes on using the remote maintenance service. For details on making settings and using the remote maintenance service, see the manuals about the remote maintenance service in the *Enhanced Support Facility User's Guide for REMCS*.

Before Setting the Remote Maintenance Service

Before using the remote maintenance service on your M3000/M4000/M50900/M8000/M9000 server, you have to complete the settings for the REMCS Agent function on XSCF Web.

Be sure to complete the necessary settings for using XSCF Web such as enabling the HTTPS, on XSCF shell. After completing, specify the settings for REMCS Agent function on XSCF Web.

For detail on the settings for XSCF Web, see *SPARC Enterprise M3000/M4000/M5000/M8000/M9000 Servers XSCF User's Guide*.

Enabling and Disabling the REMCS Agent Function

The REMCS agent function is enabled as the default settings. To enable or disable the REMCS agent function, contact a field engineer.

The Timezone Setting for REMCS Agent Function

The REMCS agent uses the current server timezone. So when you change the server timezone by XSCF, the "Periodical Connection Schedule" setting is required again for updating the information of the REMCS center.

XCP Issues and Workarounds

This section contains information about XCP issues. [TABLE 3-1](#), [TABLE 3-2](#), and [TABLE 3-3](#) list issues you might encounter, depending upon which XCP release you are using.

Known Issues and Workarounds in XCP 1110

TABLE 3-1 lists known XCP issues and possible workarounds in XCP 1110.

TABLE 3-1 Known Issues and Workarounds in XCP 1110

ID	M4000 M8000			Description	Workaround
	M3000	M5000	M9000		
RTIF1-070914-025				○ When you execute XCP Sync on the Firmware Update page, after 15 minutes, the error message "Another flashupdate is now processing" or "The page cannot be displayed" may appear.	No workaround is available. However, the XCP Sync process has been continuously executed. Check the XSCF update completion message on the monitoring message to confirm the completion of Sync process.
RTIF1-071116-001				○ DR operations might fail (with a misleading message regarding the board being unavailable for DR) after the <code>addfru(8)</code> or <code>replacefru(8)</code> command have been used for active replacement. This happens when the active replacement is done without the diagnostic test in the maintenance menu.	Do not fail to execute the diagnosis in the maintenance menu of the <code>addfru(8)</code> or <code>replacefru(8)</code> command. In case of missing the diagnostic test in the maintenance menu of the <code>addfru(8)</code> or the <code>replacefru(8)</code> command, execute the <code>testsb(8)</code> command or delete the CPU/memory board unit using the <code>deletefru(8)</code> command and then retry the <code>addfru(8)</code> command.
RTIF1-071126-002				○ When the server is being installed, and the mainline switch is turned on for the first time, these error messages might be displayed: PSU shortage XSCF watchdog timeout XSCFU hang-up is detected XSCF process down detected	Turn off the system AC power, then turn it on again. When the error log is displayed again, turn off the system AC power, then turn it on again. To turn on the system power that you turned off, wait at least 30 seconds before power-on.
RTIF1-080725-001	○	○	○	In <code>setsnmp addv3traphost</code> , when the authentication failed due to the reasons such as the trap host not working, or the wrong user name or password, the subsequent SNMP traps will not be notified.	No workaround is available. Confirm that the SNMP trap host is working and re-execute the <code>setsnmp(8)</code> command using the correct user name.
RTIF1-080725-002	○	○	○	When the SNMPv3 trap has been set, after the watchdog timeout occurred in XSCF and XSCF reset, the subsequent SNMP traps will not be notified.	Reset the XSCF.

TABLE 3-1 Known Issues and Workarounds in XCP 1110 (Continued)

ID	M4000 M8000			Description	Workaround
	M3000	M5000	M9000		
RTIF1-081016-002	O			When FRUs are cold-replaced (with the system off), (after poweron) the monitor process might not generate entries in the monitor message log identifying the replacement operation that has occurred.	No workaround is available.
RTIF1-081225-001	O	O	O	In the <code>settimezone -c adddst</code> command, when you set eight or more letters to the abbreviation of time zone and the name of Daylight Saving Time, execution of the <code>showlogs</code> command induces a segmentation fault and results in an error.	Specify the abbreviation of time zone and the name of Daylight Saving Time in seven letters or less.
RTIF1-090108-003	O	O	O	Date and time of the Last Update which displayed on the XSCF Web may not be updated.	Please refresh the display.
RTIF1-090427-005	O	O	O	When you use the <code>setpasswordpolicy(8)</code> command and set "9999999999" (10 digits) in Different Characters, the <code>showpasswordpolicy(8)</code> command displays "-1."	No workaround is available. Use XSCF Web.
RTIF1-090731-001			O	While a DIMM correctable error (CE) has been occurred, when XSCF failover is started, a message "XSCFU hang-up is detected" might appear in the error log.	This error log can be safely ignored.
RTIF1-100331-002	O	O	O	When you start up a domain from a disk that is connected to the 8 Gbps fibre channel card (SE0X7F21F, SE0X7F22F) and if it is unable to start the domain due to causes such as disk failure, an error log of "FRU: /UNSPECIFIED" might be registered.	No workaround is available.
RTIF1-110222-001	O	O	O	If <code>setpasswordpolicy -r</code> is set to 0, existing XSCF users are unable to change their password and get the error message, password: Operation failed.	Do not execute the command " <code>setpasswordpolicy -r 0</code> ".

TABLE 3-1 Known Issues and Workarounds in XCP 1110 (*Continued*)

ID	M4000 M8000			Description	Workaround
	M3000	M5000	M9000		
RTIF1-111005-001	O	O		<p>M4000/M5000 servers: When the system board is mounted with the onboard I/O device, if you use the <code>addboard(8)</code> or <code>moveboard(8)</code> command to add or move it by DR, operation may fail.</p> <p>M8000/M9000 servers: When the system board is mounted with one or more PCI cards, if you use the <code>addboard(8)</code> or <code>moveboard(8)</code> command to add or move it by DR, operation may fail. However, when it is mounted with the IOUA card only, this event does not occur.</p> <p>In either case, the following message appears on the destination domain console of the system board addition or move:</p> <pre>interpreter[xxxx]: ABORT: Bus Error: Fault Addr: 0XXXXXXXXX efdaemon[xxx]: Wait pid: xxxx status: xxx WARNING: IKP: Unable to probe PCI leaf (x-x-x)</pre>	<p>M4000/M5000 servers: No workaround is available.</p> <p>M8000/M9000 servers: No workaround is available.</p>

XCP Issues Fixed in XCP 1110

TABLE 3-2 lists XCP issues fixed in XCP 1110.

TABLE 3-2 XCP Issues Fixed in XCP 1110

ID	M4000 M8000			Description	Workaround
	M3000	M5000	M9000		
RTIF1-110222-002	O	O	O	XSCF sends Rst packets without AH header when dscp disconnects, resulting in false security vulnerability alarms. The domain console may display this message: <code>ipsec_check_inbound_policy: Policy Failure for the incoming packet (not secure).</code>	This message can be safely ignored.
RTIF1-110526-001	O	O	O	Invoking 'setsnmp' without options results in segmentation fault.	To view 'setsnmp' usage options, use 'setsnmp -h'
RTIF1-111028-001	O	O	O	In the <code>setemailreport(8)</code> , <code>setsnmp(8)</code> or <code>setupplatform(8)</code> command, any of the following characters in the email address will result in an error. <code>!#\$%&'*/=?^`{ }~</code>	Do not specify these characters in the email address.
RTIF1-111227-001		O	O	In case of connecting an External I/O Expansion Unit, a message "watchdog timeout" might be registered in an error log under the following conditions: <ul style="list-style-type: none"> Executes the <code>switchscf(8)</code> command on an M8000/M9000 server. Executes the <code>rebootxscf(8)</code> command on an M4000/M5000 server. 	No workaround is available.

XCP Issues Fixed in Releases Earlier Than XCP 1110

TABLE 3-3 lists XCP issues that have been fixed in releases earlier than XCP 1110.

TABLE 3-3 XCP Issues Fixed in Releases Earlier Than XCP 1110

ID	M4000 M8000			Description	Workaround
	M3000	M5000	M9000		
RTIF1-070418-004		O	O	All domains must be powered off before upgrading the XCP.	Power off domains before using the <code>flashupdate(8)</code> command to upgrade XCP firmware.
RTIF1-070418-005		O	O	If you log in to the XSCF while it is still booting, you may get a <code>bash\$</code> prompt instead of the <code>XSCF></code> prompt, and be unable to perform most operations.	Log out of the <code>bash\$</code> prompt and wait for the XSCF to finish booting.
RTIF1-070418-009	O	O	O	While XSCF is running, a process may go down, a watchdog timeout may occur, or a hang-up may occur. After this, XSCF may reset.	<p>M8000/M9000 servers: Check that XSCF is started. If there is XSCF unit which is not started, execute the <code>replacefru(8)</code> command, and then uninstall the XSCF unit and install it again. Or stop all the domains and then execute the system power off/on (AC OFF/ON). To turn on the system power that you turned off, wait at least 30 seconds before power-on.</p> <p>M4000/M5000 servers: Check that XSCF is started. If not started, stop all the domains and then execute the system power off/on (AC OFF/ON). To turn on the system power that you turned off, wait at least 30 seconds before power-on.</p> <p>M3000 server: Check that XSCF is started. If not started, stop the domain and then execute the system power off/on (AC OFF/ON). To turn on the system power that you turned off, wait at least 30 seconds before power-on.</p>

TABLE 3-3 XCP Issues Fixed in Releases Earlier Than XCP 1110 (Continued)

ID	M4000 M8000			Description	Workaround
	M3000	M5000	M9000		
RTIF1-070418-010	O	O		The <code>showdomainstatus -a</code> command shows domain status as Powered Off, but the <code>showboards -a</code> command shows the domain is testing.	Use the <code>showboards</code> command to check the status of domain power. The <code>showdomainstatus</code> command takes a longer time to show the correct status.
RTIF1-070418-011	O	O		Some commands that update configuration data take a relatively long time to execute.	Do not cancel <code>set*</code> commands. They appear to hang, but eventually complete in about 30 seconds.
RTIF1-070418-012	O	O		The fault (<code>memory.block.ue</code>) is encountered and reported periodically.	An uncorrectable error exists in a DIMM and the DIMM should be replaced.
RTIF1-070418-020	O	O		When using the XSCF Web to import a firmware image, if the image is corrupted (for example, if the browser window is closed during import), the <code>flashupdate</code> command might later report an internal error. CR ID 6537996 is similar.	Use the command <code>getflashimage -d</code> to delete the corrupted image. If necessary, reboot the XSCF Unit, then use the <code>flashupdate</code> command again to clear the internal error.
RTIF1-070418-021	O	O		Attempting to move a COD board using the <code>moveboard(8)</code> command might fail.	Use the <code>deleteboard(8)</code> and <code>addboard(8)</code> commands instead of the <code>moveboard(8)</code> command.
RTIF1-070418-022	O	O		The XSCF firmware monitors itself and if it detects any abnormalities, it will force a reset.	Allow the XSCF Unit to finish resetting. It will return to normal operation within approximately 5 minutes.
RTIF1-070418-023	O	O		Using the <code>rebootxscf(8)</code> command may result in a process down error, and possibly an FMA event with MSG ID SCF-8005-NE.	Ignore this event.
RTIF1-070418-025	O	O		<code>showaudit all</code> shows a long list of defaults in the policy section after the database is cleared.	Update the database with the following: <code>setaudit -a opl=enable</code> <code>setaudit -a opl=default</code>
RTIF1-070528-001	O	O		When you have updated the <code>/etc/ttydefs</code> file of Oracle Solaris OS to disable the console flow control, you cannot disable the console flow control on the telnet via a server.	No workaround is available.

TABLE 3-3 XCP Issues Fixed in Releases Earlier Than XCP 1110 (*Continued*)

ID	M4000 M8000			Description	Workaround
	M3000	M5000	M9000		
RTIF1-070528-002	O	O	O	While XSCF is running, watchdog timeout may occur and XSCF may reboot.	<p>M4000/M5000/M8000/M9000 servers: Check that XSCF is started. If not started, stop all the domains and then execute the system power off/on (AC OFF/ON). To turn on the system power that you turned off, wait at least 30 seconds before power-on.</p> <p>M3000 server: Check that XSCF is started. If not started, stop the domain and then execute the system power off/on (AC OFF/ON). To turn on the system power that you turned off, wait at least 30 seconds before power-on.</p>
RTIF1-070802-001		O	O	When connected to telnet, the login or the password prompt doesn't appear.	Disconnect the telnet session and try again.
RTIF1-070823-001		O	O	Using the XSCF Web, when you selected [SSH] on the snapshot screen, the maximum number of character input for Host, Directory, ID, and Password doesn't correspond to the maximum number of character input on the XSCF Shell.	To specify the value which exceeds the maximum number of character input for the XSCF Web, use XSCF Shell.
RTIF1-070823-002		O	O	When you display the Logical tree on the XSCF Web, there may be multiple displays of the same domain, depending on the domain configuration.	On the Menu, select System Board Configuration and refer to the domain configuration from XSB Status (All). Or use the <code>showboards(8)</code> command to refer to the domain configuration.
RTIF1-070823-003		O	O	When you display the Logical tree on the XSCF Web, the hardware configuration of CPU or memory which assigned to the domain appears differently from the actual domain configuration.	On the Menu, select Device Status to refer to the domain hardware configuration. Or use the <code>showdevices(8)</code> command to refer to the domain hardware configuration.

TABLE 3-3 XCP Issues Fixed in Releases Earlier Than XCP 1110 (*Continued*)

ID	M4000 M8000			Description	Workaround
	M3000	M5000	M9000		
RTIF1-070824-001	O	O	O	M8000/M9000 servers: When remote power control mode of interlocking mechanism for power supply to domain, is enabled, after XSCF Unit is replaced, the interlocking for power supply by RCI cannot work.	M8000/M9000 servers: After XSCF Unit is replaced, configures the RCI again and sets the remote power control mode.
				M3000/M4000/M5000 servers: When remote power control mode of interlocking mechanism for power supply to domain, is enabled, after the motherboard unit is replaced, the interlocking for power supply by RCI cannot work.	M3000/M4000/M5000 servers: After the motherboard unit is replaced, configures the RCI again and sets the remote power control mode.
RTIF1-070824-002	O	O	O	On the XSCF Web, when you select Domain Mode Configuration to perform various settings, the pop-up screen may not appear but "Undefined" may be displayed on the screen.	Select Domain Mode Configuration one more time and perform the settings. Or once terminate the XSCF Web and then perform the settings.
RTIF1-070824-003	O	O	O	On the XSCF Web, while the XCP import is in process from the [Firmware Update] screen, when you execute the [REFRESH] button, the pop-up of "Uploading Now!" disappears and the XCP import terminates abnormally.	None available at this time.
RTIF1-070824-004	O	O	O	On the XSCF Web, on the [Domain Status] screen, when you select an XSB displayed on the Domain Component List, and in case the selected XSB is not yet mounted or is Uni-XSB, the pop-up screen displays no data.	None available at this time.
RTIF1-070824-005	O	O	O	On the XSCF Web, when you changed the Refresh Interval value of the Monitor Message Frame, the invalid pop-up "Confirmation Domain mode" may appear.	Ignore the pop-up and close the screen.

TABLE 3-3 XCP Issues Fixed in Releases Earlier Than XCP 1110 (*Continued*)

ID	M4000 M8000			Description	Workaround
	M3000	M5000	M9000		
RTIF1-070824-006	O	O		On the tab browser, to the same host, when you perform multiple log-in with the user accounts of different user privileges, the user privilege of the last log-in user account will be applied to those pages which you've already logged in.	When you use the tab browser, do not perform multiple log-in to the same host.
RTIF1-070824-007	O	O		When you change configuration on the XSCF Web, if you select cancel on the confirmation dialog or perform forced close, the original configuration page may be unavailable.	From the Menu, select the original configuration page again.
RTIF1-070824-008	O	O		On the [Domain Configuration] screen, when you select an undefined Domain ID, the Configuration Policy remains as the content which previously displayed.	None available at this time.
RTIF1-070824-009	O			On the [System Board Configuration] screen, when you execute Detail, it is displayed as if the CPUM and the memory of MBU are all mounted on the PSB#0 side. And in the detail display of PSB#0, memory is displayed as "22 + 2."	None available at this time.
RTIF1-070824-011	O	O		While using Firefox 2, in the Configuration policy setting on the [Domain Configuration] screen, when you specify a domain which is in operation, an error display pop-up appears. When you click on the [Back] button on this error display pop-up and click on the [Cancel] button on the inquiry screen to re-display the data, the system remains in the error message screen.	From the Menu, select the [Domain Configuration] page again.
RTIF1-070904-001			O	CLIs executed in Standby XSCF should display "Permission denied".	Only the following CLIs can be executed on the Standby XSCF: snapshot(8), switchscf(8). Do not attempt to run any other CLI on the Standby XSCF. Such attempts will report various errors.
RTIF1-070904-002	O	O		When the snapshot CLI attempts to write to a USB stick that has write protect set results in an I/O error.	Do not attempt to use write-protected USB devices for collecting snapshot.

TABLE 3-3 XCP Issues Fixed in Releases Earlier Than XCP 1110 (Continued)

ID	M4000 M8000			Description	Workaround
	M3000	M5000	M9000		
RTIF1-070904-003	O	O		An incorrect domain state is reported. After the command <code>sendbreak(8)</code> to domain is issued, <code>showdomainstatus(8)</code> continues to show the state as "Running" when the domain is actually at "ok" prompt.	No workaround is available. This is expected behavior of the <code>sendbreak(8)</code> operation.
RTIF1-070904-005	O	O		Time can't be synchronized with the NTP server.	<p>Check the <code>stratum</code> value of the NTP server.</p> <p>The <code>stratum</code> value of XSCF is "5." The NTP server which the XSCF refers to must be a server on which the <code>stratum</code> value is smaller than 5. When you changed the NTP server to refer to, reboot the XSCF.</p> <p>When the <code>stratum</code> value has been set correctly and the time can't be synchronized, use the <code>showntp(8)</code> command to check the jitter value to be displayed.</p> <p>If this value is large, please reboot the XSCF.</p>
RTIF1-070904-006	O	O		While executing the domain power-on, domain reset or DR, in case the XSCF reset occurred, the process may be aborted in some or all of the XSB.	Execute the domain reset one more time, or power off the domain and then power on again.
RTIF1-070912-001	O	O		If an invalid SMTP server is configured, a subsequent attempt to disable e-mail service (using the <code>setemailreport</code> CLI) may block for up to 30 minutes.	<p>Wait for the CLI to complete. The rest of the system will function normally during this time.</p> <ul style="list-style-type: none"> The CLI can also be aborted by <code>^C</code>. Note that the operation (disabling email report) is completed, even if <code>^C</code> is used. <code>showemailreport</code> can be used to confirm that the email service has been disabled.
RTIF1-070914-001	O	O		While executing the firmware update by using the <code>flashupdate(8)</code> command or BUI, when the import of XCP executed by using the <code>getflashimage(8)</code> command or BUI, the firmware update aborts.	Do not execute the import of XCP by using the <code>getflashimage(8)</code> command or BUI, while executing the firmware update.

TABLE 3-3 XCP Issues Fixed in Releases Earlier Than XCP 1110 (*Continued*)

ID	M4000 M8000			Description	Workaround
	M3000	M5000	M9000		
RTIF1-070914-002	O	O		When the XSCF switching performed, the monitor message doesn't show the number of XSCF unit which turned active.	Execute the <code>showhardconf(8)</code> command to refer to the state of XSCF unit.
RTIF1-070914-003	O	O		When the XSCF switching performed, there may be "SCF: Board control error (DMA timeout)" stored in the error log.	No workaround is available. This message can be safely ignored.
RTIF1-070914-005	O	O		On the XSCF Web, when using Internet Explorer 7, on the [User Accounts] screen, User Local Accounts doesn't show the Status of each user.	None available at this time.
RTIF1-070914-006	O	O		When you set the XSCF user account name to the maximum 32 characters, you can log in, but then, when you execute the XSCF Shell or operate the XSCF Web, "Permission denied" occurs.	Use up to 31 characters to set the XSCF user account name.
RTIF1-070914-007	O	O		On the XSCF Web, when you use Internet Explorer and select [Log Archives], the [Status of Log Archiving] screen doesn't show the status information.	None available at this time.
RTIF1-070914-008	O	O		On the XSCF Web, when you select [POP] or [SMTP-auth] on the [SMTP] screen to enter Password, the input value doesn't appear as "*".	None available at this time.
RTIF1-070914-009	O	O		On the XSCF Web, when selected [POP] or [SMTP-auth] on the [SMTP] screen, the setting can be done while the input field remains blank. And despite the setting done, the past setting data appears.	None available at this time.
RTIF1-070914-010	O	O		On the XSCF Web, on the [SNMPv3 Security Settings] screen, when you select [Add User] or [Copy User] of the [SNMP User-Based Security Model (USM)], the [Create or Copy User] screen appears as a pop-up. On this screen, when you set the SNMP User with 16 digits or more, it will be registered correctly but the web browser screen displays up to 15 digits.	When you set the SNMP User with 16 digits or more, use the <code>showsnmpusm(8)</code> command.

TABLE 3-3 XCP Issues Fixed in Releases Earlier Than XCP 1110 (Continued)

ID	M4000 M8000			Description	Workaround
	M3000	M5000	M9000		
RTIF1-070914-011	O	O		On the XSCF Web, on the [SNMPv3 Security Settings] screen, when you select [Change Password] of the [SNMP User-Based Security Model (USM)], the [Change Password] screen appears as a pop-up. On this screen, despite the [Confirm Password] is a field which must be entered, it is not displayed with the note "* Indicates require field."	Do not fail to set Confirm Password which is a field must be entered.
RTIF1-070914-012	O	O		On the XSCF Web, on the [SNMP-Properties] screen, when you don't select [Trap Host] and execute the [Remove] button, the invalid message "The trap host will be removed" appears as a pop-up. And when you select [OK] on the pop-up screen, the invalid message "Remove trap host failed. setsnmp: invalid trap type" appears.	None available at this time.
RTIF1-070914-013	O	O		On the XSCF Web, on the [Audit-Properties] screen, when you execute the [Add Policy] button, the [Set User Policy] appears as a pop-up. On this screen, when you specified a user name which is not registered in XSCF and an input error resulted, the value entered won't be cleared though you execute the [Reset] button to clear the specified user name.	Set the correct user name or execute the [Cancel] button to close the pop-up screen.
RTIF1-070914-014	O	O		On the XSCF Web, when you use a user account without an appropriate privilege to select [Snapshot], set the parameters of [Start time] or [End time] and execute the [Download] button, it doesn't result in a privilege error but the parameter error will be displayed.	None available at this time.
RTIF1-070914-015	O	O		On the XSCF Web, when you select [User Manager] to add the user account, the user name to be specified is limited up to 20 characters.	To specify a user name of 20 characters or more, use the <code>adduser(8)</code> command.

TABLE 3-3 XCP Issues Fixed in Releases Earlier Than XCP 1110 (*Continued*)

ID	M4000 M8000			Description	Workaround
	M3000	M5000	M9000		
RTIF1-070914-016	O	O		On the XSCF Web, when you select [LDAP] to perform the LDAP configuration, if you execute [Save] while the [LDAP Search Timeout] remains as its default value "0," it results in "LDAP Configuration Update Failed. Save LDAP Configuration Data failed," and the setting can't be stored.	Since "0" is an invalid value in the [LDAP Search Timeout], do not fail to set a value other than 0.
RTIF1-070914-017	O	O		On the XSCF Web, when you select [LDAP] and input the [LDAP Search Timeout] with a value which exceeds the maximum 2147483647 seconds, it doesn't result in parameter error.	None available at this time. The maximum 2147483647 seconds will be set to the [LDAP Search Timeout].
RTIF1-070914-018	O	O		On the XSCF Web, when you use a user account without an appropriate privilege to select [LDAP] and execute the [Delete] button, it results in a privilege error but the configuration information which has been displayed will be cleared and seems as if deleted.	The configuration is not deleted. To show the configuration information again, select [LDAP] from the Menu.
RTIF1-070914-019	O	O		The CLI 'showldap -c' (which displays current LDAP certificates) will show proper data only when used with the same user account that had originally provided certificate information using 'setldap -c'. Any other user account will generate "Permission denied" error. Similarly, the XSCF Web's [LDAP Configuration] pop-up screen will display no data, when a different user account is used.	Use the same user account for all LDAP display or configuration operations, for both CLI and XSCF Web.
RTIF1-070914-020	O	O		On the User Account setting page on the [User Manager] screen, after the password change resulted in "Change Password Error," when you click on the [REFRESH] button, there appears the error message "No user. The request is aborted."	To change the password, select [User Manager] on the Menu again.
RTIF1-070914-021	O	O		During the OpenBoot PROM process, when you power off the domain, the error log of Domain hang-up detected (level3) may be registered.	This error log can be safely ignored.

TABLE 3-3 XCP Issues Fixed in Releases Earlier Than XCP 1110 (*Continued*)

ID	M4000 M8000			Description	Workaround
	M3000	M5000	M9000		
RTIF1-070914-023		O	O	When you specify the domain ID or XSB number which are not supported on the server, there appears the parameter error message.	Specify the available domain ID or XSB number on the server.
RTIF1-070914-024		O	O	When you display the physical tree on the XSCF Web, the warning mark is displayed on the link card for External I/O expansion unit.	None available at this time.
RTIF1-070914-026		O	O	The XSCFU cannot act as a reliable NTP source for domains.	All domains should be configured to use a NTP source other than the XSCFU.
RTIF1-070915-001		O	O	On the [Domain Configuration] screen, when you newly define the Domain Component List, the parameter error may be displayed.	When you define the Domain Component List, use CLI.
RTIF1-071011-001			O	When the server is being installed, and the mainline switch is turned on for the first time, these error messages might be displayed: XSCFU hang-up is detected XSCF process down detected DB synchronization timeout	Turn off the system AC power, then turn it on again.
RTIF1-071102-001		O	O	The XSCF firmware monitors itself and if it detects any inconsistencies, it forces an XSCF reboot.	No workaround is available. Allow the XSCF Unit to finish rebooting. It returns to normal operation within approximately 5 minutes.
RTIF1-071102-002	O	O	O	The snmp daemon might quit.	To restart the snmp daemon, issue the command <code>setsnmp enable</code> .
RTIF1-071116-001		O		DR operations might fail (with a misleading message regarding the board being unavailable for DR) after the <code>addfru(8)</code> or <code>replacefru(8)</code> command have been used for active replacement. This happens when the active replacement is done without the diagnostic test in the maintenance menu.	Do not fail to execute the diagnosis in the maintenance menu of the <code>addfru(8)</code> or <code>replacefru(8)</code> command. In case of missing the diagnostic test in the maintenance menu of the <code>addfru(8)</code> or the <code>replacefru(8)</code> command, execute the <code>testsb(8)</code> command or delete the CPU/memory board unit using the <code>deletefru(8)</code> command and then retry the <code>addfru(8)</code> command.
RTIF1-071116-003		O	O	Using the XSCF Web, when you selected [COD], <code>codusage</code> details cannot be displayed correctly.	Use <code>showcodusage(8)</code> command to display the cod usage.

TABLE 3-3 XCP Issues Fixed in Releases Earlier Than XCP 1110 (*Continued*)

ID	M4000 M8000			Description	Workaround
	M3000	M5000	M9000		
RTIF1-071116-004	O	O		When Internet Explorer 7 browser is used, the License key deletion cannot be executed on the BUI COD page.	Use <code>deletecodlicense(8)</code> command to delete a license key. Or use other browsers: <ul style="list-style-type: none"> • Microsoft Internet Explorer 6.0 • Firefox 2.0 or later • Netscape Navigator 7.1 or later
RTIF1-071116-005		O		While system power on, when the XSCF switching performed by <code>switchscf(8)</code> command, PANIC might be generated in XSCF before it switches, and "SHUTDOWN timeout" may be stored in the error log.	No workaround is available. This message can be safely ignored.
RTIF1-071116-006		O		While XSCF is running, error message of "hang-up is detected" might be displayed to XSCF console, and XSCF may reboot.	Check that XSCF is started. If not started, use the <code>rebootxscf(8)</code> command to restart XSCF, or stop all the domains and then execute the system power off/on (AC OFF/ON). To turn on the system power that you turned off, wait at least 30 seconds before power-on.
RTIF1-071129-001	O	O		If the following message is displayed on XSCF console, the XSCF might not start: <pre> dbs [xxx]: ERR: scdb_init_all(): xx, No space left on device </pre> In addition, this error log might be registered: <pre> XSCF process down detected </pre>	Replace the XSCF Unit.
RTIF1-071129-002	O	O		When performing XSCF Shell commands remotely using SSH on the remote-control device, the following messages might be displayed: <pre> stty: standard input: Invalid argument </pre>	None available at this time.
RTIF1-071129-003	O	O		An error log cannot be registered in XSCF when the following message is displayed on Oracle Solaris OS by the I/O error: <pre> SUNW-MSG-ID: SUN4-8000-4P, TYPE: Fault </pre>	No workaround is available.

TABLE 3-3 XCP Issues Fixed in Releases Earlier Than XCP 1110 (*Continued*)

ID	M4000 M8000			Description	Workaround
	M3000	M5000	M9000		
RTIF1-071129-004	O	O		<p>The following messages are displayed and you might not boot Oracle Solaris OS:</p> <ul style="list-style-type: none"> • Abnormal OpenBoot environment variable Boot process failed • ERROR: Invalid token '' FATAL: NVRAM contents corrupt; Reinitializing NVRAM parameters. 	Confirm the OpenBoot PROM environment variable. If the variable has errors, set the variable again.
RTIF1-071227-001	O	O		<p>In XSCF, write of date and time may become an error. When the domain powered on, the following message may appear and the domain may fail to be powered on.</p> <p>Poweron canceled due to invalid system date and time.</p>	Execute the <code>rebootxscf(8)</code> command to restart XSCF.
RTIF1-071227-002	O	O		<p>When the <code>showhardconf(8)</code> command executed in an environment with the External I/O Expansion Unit, the <code>showhardconf(8)</code> command may appear as if hang up.</p>	Press Ctrl-C to terminate the <code>showhardconf(8)</code> command and execute the <code>showhardconf(8)</code> command again.
RTIF1-071227-003	O	O		<p>When a non-existent device name specified to the Boot device path and resulted in the OS Boot error, the status of I/O unit may become "Degraded."</p>	<p>Specify the correct device name to the Boot device path.</p> <p>When the status of I/O unit became "Degraded," replace the I/O unit.</p>

TABLE 3-3 XCP Issues Fixed in Releases Earlier Than XCP 1110 (*Continued*)

ID	M4000 M8000			Description	Workaround
	M3000	M5000	M9000		
RTIF1-080313-001	○	○		When you set XSCF as the NTP server of the domain, following message may appear on the domain console at the domain start and you may fail to perform time synchronization. <code>ntpdate[xx]: no server suitable for synchronization</code>	<p>Perform either one of the following workarounds depending on the mode which has been set in the <code>xntpd</code> of the domain.</p> <p>Note - In case of step mode, the time correction induces the time step. When the time step occurred, it may affect the applications running on the domain.</p> <ul style="list-style-type: none"> • In case of step mode: Specify the <code>-w</code> option to execute the <code>ntpdate(1M)</code> command. Until it succeeds in synchronizing with the NTP server, the <code>ntpdate</code> command retry continues at regular intervals. In the retries, the message which indicates that it failed to synchronize with the NTP server can be safely ignored. When the synchronization completed, the time will be corrected to the time of the NTP server. • In case of slow mode: Execute the <code>ntpdate(1M)</code> command without specifying the <code>-w</code> option. In slow mode, the time variance from the NTP server will be corrected at 0.5 ms/second intervals. The message which indicates that it failed to synchronize with the NTP server can be safely ignored. Before the time completely corrected, there remains a time variance between the NTP server and the domain.

TABLE 3-3 XCP Issues Fixed in Releases Earlier Than XCP 1110 (*Continued*)

ID	M4000 M8000			Description	Workaround
	M3000	M5000	M9000		
RTIF1-080325-001	O	O	M4000/M5000 servers: When you turn on AC power, or when you execute the <code>rebootxscf(8)</code> command, you may become unable to log in to XSCF and your press on the POWER switch on the operator panel may fail to turn on the power.	M4000/M5000 servers: Before turning on AC power, or executing the <code>rebootxscf(8)</code> command, please confirm that XSCF LAN has been correctly connected and linked up. In case the situation in question occurred, please turn off the power of all domains and then execute the system power off/on. To turn on the power that you turned off, wait at least 30 seconds before power-on.	
			M8000/M9000 servers: When you turn on AC power, or when you execute the <code>rebootxscf(8)</code> or <code>switchscf(8)</code> command, either of the following situations may occur. <ul style="list-style-type: none"> Following error message gets registered in the error log, the status becomes <code>Faulted</code>, and the standby XSCF becomes unable to start. Device error on serial interconnection between XSCFUs You become unable to log in to XSCF and your press on the POWER switch on the operator panel can't turn on the power. 	M8000/M9000 servers: Before turning on AC power, or executing the <code>rebootxscf(8)</code> or <code>switchscf(8)</code> command, please confirm that XSCF LAN has been correctly connected and linked up. In case the situation in question occurred, please take either of the following actions. <ul style="list-style-type: none"> Use the <code>replacefru(8)</code> command to reattach the standby XSCF unit. Turn off the power of all domains and then execute the system power off/on. To turn on the power that you turned off, wait at least 30 seconds before power-on. 	
RTIF1-080404-001	O	O	Following a dynamic reconfiguration operation using the XSCF commands <code>deleteboard(8)</code> and <code>addboard(8)</code> , you might see I/O channel degradation, resulting in error messages and entries in the corresponding ereport. If you run into this problem, the <code>fmddump(8)</code> command will report the following error by mistake: <code>ereport.chassis.SPARCEnterprise.asic.ioc.ch.leaf.fe</code>	The MSG-ID assigned to the error displayed and the actual behavior may not be consistent, and reset or degradation may not occur. Contact a qualified service engineer and give the error code that displayed by using the <code>showlogs</code> error command.	

TABLE 3-3 XCP Issues Fixed in Releases Earlier Than XCP 1110 (*Continued*)

ID	M4000 M8000			Description	Workaround
	M3000	M5000	M9000		
RTIF1-080404-002	O	O		When you use the command <code>setsnmpusm passwd</code> to set a password, if you set a password of fewer than eight characters, a segmentation fault occurs.	Always set a password of at least eight characters.
RTIF1-080512-001	O	O		When you specify "localhost" to the <code>sethostname(8)</code> command and reset XSCF by using the <code>applynetwork(8)</code> and the <code>rebootxscf(8)</code> commands, a process goes down in XSCF.	Do not specify "localhost" to the <code>hostname</code> of the <code>sethostname(8)</code> command.
RTIF1-080512-002		O		When the NTP setting are enabled, a message as follows may appear on the XSCF console. Output sample: <pre>-xx.xxx.xxx.xxx mode 4 code 1 auth 0 clock_filter: n 8 off - 0.000310 del 0.001300 dsp 0.001158 jit 0.000172, age 0 clock_update: at 637535 assoc 2 local_clock: assocID 54190 offset -0.000309657 freq - 9.765 state 4 ...</pre>	This message can be safely ignored. No workaround is available.
RTIF1-080512-003	O	O		To a domain which is in Quad-XSB configuration, when you perform active addition of PCI cards and then restart the domain, active addition of PCI cards may become unavailable afterwards.	Do not perform active addition of PCI cards. When you failed in active addition of PCI cards, stop the domain to add on the cards.
RTIF1-080520-001		O		BUI Domain Operation page mistakes the operation demand for Domain 8 or 9, and it issues it to DID#00 wrongly.	Do not perform active addition of PCI cards. When you failed in active addition of PCI cards, stop the domain to add on the cards.
RTIF1-080526-001	O	O		When the system is stressed with many faults, the <code>fmd</code> process on the service processor might hang. Once this happens, <code>fma</code> commands on the service processor can fail or hang.	Reboot the service processor using the XSCF command <code>rebootxscf(8)</code> .
RTIF1-080620-001	O	O		The SNMP trap not notified in the event that the power cable of the server got unplugged accidentally.	No workaround is available.

TABLE 3-3 XCP Issues Fixed in Releases Earlier Than XCP 1110 (Continued)

ID	M4000 M8000			Description	Workaround
	M3000	M5000	M9000		
RTIF1-080725-003		O	O	The initial value that set with the <code>setdomparam set-defaults</code> option differs from the initial value of OpenBoot PROM. parameters current value expected value <code>diag-level none (0x00)</code> <code>min (0x20)</code> <code>auto-boot? false (0x00)</code> <code>true (0xff)</code>	In the OpenBoot PROM prompt (<code>ok</code>), execute the <code>set-defaults</code> command to restore the OpenBoot PROM environmental variables to the initial value.
RTIF1-080725-004	O	O	O	After set the Daylight Saving Time by using the XSCF shell, XSCF Web does not show the correct time in the Logs menu.	No workaround is available. Use the <code>showlogs(8)</code> command of the XSCF shell.
RTIF1-080808-001		O	O	On the cluster system using the PRIMECLUSTER software, when there are 10 or more RCI units, the RCI busy status may be temporarily unreleased and output the following syslog message: <code>SA_pprcir.so to test host</code> <code>host_name failed</code>	Refer to the manual of the PRIMECLUSTER software to check the cluster status. If no problem found on the status, this message can be safely ignored. If any problem, follow the instructions on the manual to solve the problem.
RTIF1-081006-001	O	O	O	The error log "XSCF FMEM write error" recorded and the firmware update might fail.	Power off (AC OFF) the system, and power on (AC ON) again. Then, re-execute the firmware update.
RTIF1-081006-002	O	O	O	In the <code>setemailreport(8)</code> command, when you specified over 255 characters in the SMTP address, an error results.	Do not specify over 255 characters in the SMTP address.
RTIF1-081006-003	O			During the domain operation, after the XSCF reset due to the XSCF unit failure, the hardware status shows Deconfigure in the status of CPU and memory.	Replace the motherboard unit only. When no failure found on the memory, you do not need to replace the memory.
RTIF1-081006-004	O	O	O	During the firmware update, there might be the following output message and a XSCF panic might occur. <code>kernel BUG in</code> <code>jffs2_do_read_inode at</code> <code>fs/jffs2/readinode.c:XXX!</code>	Reset XSCF and use the <code>flashupdate(8)</code> command to retry the firmware update.

TABLE 3-3 XCP Issues Fixed in Releases Earlier Than XCP 1110 (*Continued*)

ID	M4000 M8000			Description	Workaround
	M3000	M5000	M9000		
RTIF1-081006-005	O	O	O	The network configuration on the XSCF Web does not support the function equivalent to the <code>setnetwork -r</code> command. And when you specified <code>localhost</code> or <code>localdomain</code> to the host name or the domain name, the error message "SessionID has expired" appears.	Use the <code>setnetwork -r</code> command on the XSCF shell.
RTIF1-081006-006	O	O	O	The panic log on the XSCF Web might not be displayed from the top of the message.	When the output is insufficient, execute the <code>showlogs panic</code> command on the XSCF shell.
RTIF1-081006-007	O	O	O	The <code>password(8)</code> command indicates that the <code>user</code> operand is optional but will fail if a <code>user</code> operand is not included when other options are specified.	No workaround is available. Specify the <code>user</code> operand to execute the <code>password(8)</code> command when you specify other options.
RTIF1-081006-011	O	O	O	SNMP trap host configuration changes are not valid until <code>setsnmp disable</code> and <code>setsnmp enable</code> .	Modify the SNMP setting: XSCF> setsnmp disable XSCF> setsnmp enable
RTIF1-081016-001	O	O	O	Power failure at the commercial AC supply connector to the UPS does not send notification/send trap.	No workaround is available.
RTIF1-081016-003	O	O	O	In Internet Explorer 6 or 7, clicking on the [Reset] button then the [OK] button from the [Settings]-[Audit]-[Add Policy] pop-up screen will log the user out with message: Error Session Error Session ID has been expired	Log back into the browser interface and use the [Backspace] key to clear text in the [User] text box of the pop-up screen instead of using the [Reset] button.
RTIF1-081030-001			O	The information related to the defined LSB cannot be displayed on XSCF Web [Domain Configuration] page with an account which has single domain privilege larger than DID15. In addition, the operation for such LSB by [XSB Config...] button cannot be performed.	Use the <code>showdcl(8)</code> , <code>addboard(8)</code> , <code>deleteboard(8)</code> , <code>moveboard(8)</code> command on the XSCF shell.

TABLE 3-3 XCP Issues Fixed in Releases Earlier Than XCP 1110 (*Continued*)

ID	M4000 M8000			Description	Workaround
	M3000	M5000	M9000		
RTIF1-081030-002	O	O	O	When the timezone other than three characters has been set, the error logs cannot be displayed on XSCF Web [Error Log] page. In addition, XSCF Web [Panic Log] and [IPL Message Log] pages display the date on the table with "---".	Use the <code>showlogs(8)</code> command on the XSCF shell.
RTIF1-081104-001	O	O	O	The monitor message log might not be registered when a PCI slot error detected.	No workaround is available. Use the <code>showlogs error</code> command or the <code>fmddump</code> command to check the fault information of PCI slot.
RTIF1-090108-001	O	O	O	The domain console may display this message: <code>ipsec_check_inbound_policy:</code> Policy Failure for the incoming packet (not secure)	This message can be safely ignored.
RTIF1-090108-002	O	O	O	In the dual power feed system, when the power failure and the power recovery occurred repeatedly on one line, all domains will be forcibly powered off. And in the power recovery from the forced power-off, a PSU illegal configuration might be registered in the error log and the power recovery might not be started.	You need to remove and insert the power cable.
RTIF1-090108-004			O	When you replaced the XSCF unit by using the <code>replacefru(8)</code> command, there may be the DB synchronization timeout error log and the replacement may fail.	Turn off all mainline switches and then turn on again. Or, just after the XSCF reset using the <code>rebootxscf(8)</code> command, execute the <code>replacefru(8)</code> command and extract and insert the XSCF unit which failed in replacement. If time passed after the XSCF reset, the <code>replacefru(8)</code> command may fail again. In such a case, re-execute the <code>rebootxscf(8)</code> command and the subsequent processes.

TABLE 3-3 XCP Issues Fixed in Releases Earlier Than XCP 1110 (Continued)

ID	M4000 M8000			Description	Workaround
	M3000	M5000	M9000		
RTIF1-090115-001	O	O	O	When you execute the <code>settelnet -c disable</code> command, the Telnet service will be stopped immediately. However, unless you reset XSCF by using the <code>rebootxscf(8)</code> command, you might fail in the subsequent restart of the Telnet service.	After you stopped the Telnet service, execute the <code>rebootxscf(8)</code> command to reset XSCF.
RTIF1-090122-001	O	O	O	"Power recovery" message is output before a PSU has recovered.	After the "Power recovery" message is output, wait 60 seconds before removing power from another PSU.
RTIF1-090220-001	O	O	O	In a system connecting multiple hosts and one or more I/O units with RCI, the power-on operation to one of those RCI hosts may not power on any of the RCI I/O units.	All the RCI hosts shall be powered on.
RTIF1-090220-002	O	O	O	M3000 server: After replaced the motherboard unit, the RCI power interlocking setting restores to its default value. M4000/M5000/M8000/M9000 servers: After replaced the XSCF unit, the RCI power interlocking setting restores to its default value.	M3000 server: If you have set the power interlocking to a value other than the default, replace the motherboard unit and then use the <code>setpwrmode(1M)</code> command to set the power interlocking setting again. M4000/M5000/M8000/M9000 servers: If you have set the power interlocking to a value other than the default, replace the XSCF unit and then use the <code>setpwrmode(1M)</code> command to set the power interlocking setting again.
RTIF1-090427-001	O	O	O	Despite the normal status of ppp network interface for the XSCF-to-Oracle Solaris OS communication, SNMP MIB notifies abnormal (down) status.	No workaround is available.
RTIF1-090427-002	O	O	O	After the XSCF reset or switching, you cannot login to XSCF using the LDAP server.	No workaround is available. Log in to active XSCF with initial account and execute the following command to re-import the certificate chain. <code>'setldap -c <remote file>'</code>

TABLE 3-3 XCP Issues Fixed in Releases Earlier Than XCP 1110 (Continued)

ID	M4000 M8000			Description	Workaround
	M3000	M5000	M9000		
RTIF1-090427-003			○	After changed the SNMP configuration, when the XSCF switching occurred, the SNMP function may be disabled.	No workaround is available. In case this event occurred, the following command may restore the function. setsnmp disable setsnmp disable (run "setsnmp disable" twice) setsnmp enable
RTIF1-090427-004	○	○	○	In the setting of the LDAP server, the number of characters which can be specified differs between XSCF Web and XSCF Shell. On XSCF Web, you can enter up to 128 characters.	To set 129 characters or more, use XSCF Shell.
RTIF1-090430-001	○	○	○	After you set https (using the self certificate authority) by XSCF and created a web server certificate, https is not enabled.	To set the self certificate authority, do not specify a blank character.
RTIF1-090508-001	○	○	○	In a domain mounted with the 10 Gigabit Ethernet card (SE0X7HE1F), when you set the OpenBoot PROM environmental variable <code>diag-switch?</code> to <code>true</code> , the following warning message appears on the console; and at the same time, "Msg: Device error (FCode informed error)" is recorded in the error log. WARNING: /pci@7,700000: FCODE map-in doesn't match decoded register type; And when you execute the <code>showstatus(8)</code> command, "Degraded" might be indicated to the FRU which has installed the relevant card.	The entire output can be safely ignored. To avoid these outputs, execute the following command at the ok prompt and set the OpenBoot PROM environmental variable <code>diag-switch?</code> to <code>false</code> . setenv diag-switch? false
RTIF1-090729-001	○	○	○	When you use the <code>sethttps(8)</code> command to create a self-signed web server certificate, if the number of characters specified in a parameter exceeds 100, it might result in an internal error and you might fail to create the certificate.	Specify up to 100 characters in the parameter and execute the <code>sethttps(8)</code> command again.

TABLE 3-3 XCP Issues Fixed in Releases Earlier Than XCP 1110 (*Continued*)

ID	M4000 M8000			Description	Workaround
	M3000	M5000	M9000		
RTIF1-090824-001	O	O	O	The XSCF might go down and require a reboot, or you might see console error messages and a core dump (<code>ereport.chassis.software.core</code>) when one of these conditions occurs: <ul style="list-style-type: none"> • A local account has been created with a user ID explicitly assigned to a value larger than 65536 (<code>adduser -u uid</code>). • An LDAP account has been used that has a UID value larger than 65536. 	Use only user accounts with a user ID (UID) value between 100 and 60000. This is the range of auto-assigned UIDs for the XSCF command <code>adduser(8)</code> .
RTIF1-091021-001	O	O	O	While Active Directory is enabled, if you log in to XSCF using the user name that registered in the Active Directory server, the <code>showconsolepath(8)</code> command displays not the log-in user name but "proxyuser."	No workaround is available.
RTIF1-091105-001	O	O	O	The <code>loadcert</code> console operand is missing in the usage of the <code>setad(8)</code> command and the <code>setldapssl(8)</code> command.	For how to use the <code>loadcert</code> console operand of the <code>setad(8)</code> command and the <code>setldapssl(8)</code> command, see the man page.
RTIF1-091109-001	O	O	O	Once domain detected a failure related to DIMM or PCI, the error log about this detected failure is registered every time you reset XSCF.	This error log can be safely ignored.
RTIF1-091109-002	O	O	O	In XSCF, a host route cannot be set. When you use the <code>setroute(8)</code> command and set the netmask to 255.255.255.255, it returns an <code>invalid parameter</code> .	To set a host route, do not specify the netmask (<code>-m</code> option).
RTIF1-091109-003	O	O	O	When you use the <code>setnameserver(8)</code> command or the DNS setting of XSCF Web to register the DNS server or the search path, you can specify two or more same IP address values or domain names. However, when you specify two or more same IP address values or domain names to delete all the DNS servers or the search paths which are same, it returns an <code>invalid parameter</code> .	To delete all the DNS servers or the search paths which are same, specify just one corresponding address or domain name. In doing so, all the DNS servers or the search paths which are same will be deleted. Register the data again as needed.

TABLE 3-3 XCP Issues Fixed in Releases Earlier Than XCP 1110 (Continued)

ID	M4000 M8000			Description	Workaround
	M3000	M5000	M9000		
RTIF1-091109-004	O	O	O	<p>When you start up a domain from a disk connected to the 8-Gbps fibre channel card (SE0X7F21F, SE0X7F22F), if you fail to specify the correct device path, an error log with no message might be registered.</p> <p>In the same way, when you start up a domain from a disk connected to the 8-Gbps fibre channel card (SE0X7F21F, SE0X7F22F), even if the domain cannot be started due to reasons such as disk failure, the error log might not be registered.</p>	No workaround is available.
RTIF1-100331-001	O	O	O	<p>When you use the <code>sethttps(8)</code> command to create the self CA (Certificate Authority) or a CSR with specifying only spaces (for example, " ") in the <i>e-mail</i> operand, the HTTPS function might be disabled after XSCF reset.</p>	When you create the self CA or a CSR, do not specify only spaces in the <i>e-mail</i> operand.
RTIF1-100713-001	O	O	O	<p>While the Oracle Solaris 10 OS is running, if the occurrence of RED State Exception or watchdog reset or the execution of the <code>reset xir</code> command lead to the domain CPU reset, the following message might be displayed on the console and the domain might hang up.</p> <pre>Failed to complete trap processing. mid=0xXX</pre>	<p>No workaround is available.</p> <p>When this problem occurred, turn off the domain power and then turn on.</p>
RTIF1-100713-002			O	<p>Though the mainline switch is on, the <code>showhardconf(8)</code> command might wrongly display the PSU status as "Breaker off" or "Input fail."</p>	No workaround is available.
RTIF1-101019-001	O	O	O	<p>When you start up a domain from a hard disk that is connected to the 8Gbps fibre channel card (SE0X7F21F, SE0X7F22F) and if you specified an erroneous value after "@" of the disk node, the message of "Fast Data Access MMU Miss" might be displayed on the console and an error log of the TT=0x68 trap might be registered.</p>	<p>No workaround is available.</p> <p>When this event occurred, change the environmental variable 'auto-boot?' setting to <code>false</code> and use the <code>reset-all</code> command to reset the domain. Then, specify the correct value after "@" of the disk node and execute the <code>boot</code> command.</p>

TABLE 3-3 XCP Issues Fixed in Releases Earlier Than XCP 1110 (*Continued*)

ID	M4000 M8000			Description	Workaround
	M3000	M5000	M9000		
RTIF1-101029-001			○	When you use the <code>setroute(8)</code> command to set the gateway address and if you mistake the setting or the gateway has been stopped, XSCF hangs up.	To set the gateway address, confirm that the specified address is correct. Before resetting XSCF by using the <code>rebootxscf(8)</code> command, confirm that the gateway is operating properly.
RTIF1-101102-001			○	When the RCI of XSCF#0 and XSCF#1 both got the communication error, the RCI asynchronous monitoring of PRIMECLUSTER does not stop normally but gets the monitoring timeout, which delays the switching of the clusters after the error detected.	No workaround is available.
RTIF1-101215-001	○	○	○	While XSCF is running, a process may go down. After this, XSCF may reset.	No workaround is available. This error log can be safely ignored.
RTIF1-110216-001	○			When you execute the <code>showenvironment power</code> command on the M3000 server with SPARC64 VII+ processors, an incorrect value of "Permitted AC power consumption" will be displayed with 470 W.	No workaround is available. The correct value is 505 W for AC power supply model and is 510 W for DC power supply model.
RTIF1-110523-001	○	○	○	From the OpenBoot PROM prompt (<code>ok</code>), when you use the <code>nvalias</code> command and try setting a <code>devalias</code> to the environmental variable <code>nvrामrc</code> , it may fail with the message "Can't create new alias because <code>nvrामrc</code> is full."	In case this event occurred, redo the settings of any <code>devalias</code> which is already defined in the environmental variable <code>nvrामrc</code> , by using the <code>nvalias</code> command. Then, in order to set the failed <code>devalias</code> , execute the <code>nvalias</code> command once again.

Oracle Solaris OS Issues and Workarounds

This section contains information about Oracle Solaris OS issues. [TABLE 3-4](#), [TABLE 3-5](#), [TABLE 3-6](#), [TABLE 3-7](#), [TABLE 3-8](#), [TABLE 3-9](#), and [TABLE 3-10](#) list issues you might encounter, depending upon which Oracle Solaris OS release you are using.

Oracle Solaris Issues and Workarounds for All Supported Releases

[TABLE 3-4](#) lists Oracle Solaris OS issues that you might encounter in any supported release of Oracle Solaris OS.

TABLE 3-4 Oracle Solaris OS Issues and Workarounds for All Supported Releases

CR ID	M4000 M8000			Description	Workaround
	M3000	M4000	M9000		
6344060	O			A lot of following ereports are outputted when both interfaces bge1 and bge2 are in use. <code>ereport.io.device.badint_limit</code> <code>ereport.io.service.lost</code> This issue is caused on the M3000 server with SPARC64 VII+ processors.	This has been fixed in patch 144563-02. [Workaround] No workaround is available.
6449315		O		The Oracle Solaris OS <code>cfgadm(1M)</code> command does not unconfigure a DVD drive from a domain on a M8000/M9000 server.	Disable the Volume Management Daemon (<code>vold</code>) before unconfiguring a DVD drive with the <code>cfgadm(1M)</code> command. To disable <code>vold</code> , stop the daemon by issuing the command <code>/etc/init.d/volmgt stop</code> . After the device has been removed or inserted, restart the daemon by issuing the command <code>/etc/init.d/volmgt start</code> .

TABLE 3-4 Oracle Solaris OS Issues and Workarounds for All Supported Releases (*Continued*)

CR ID	M4000 M8000			Description	Workaround
	M3000	M4000	M9000		
6459540	O	O		The DAT72 internal tape drive on a server may time out during tape operations. The device might also be identified by the system as a QIC drive.	<p>Add the following definition to <code>/kernel/drv/st.conf</code>:</p> <pre>tape-config-list= SEAGATE DAT DAT72-000", SEAGATE_DAT DAT72-000", SEAGATE_DAT DAT72-000"; SEAGATE_DAT DAT72-000= 1,0x34,0,0x9639,4,0x00,0x8c,0x 8c, 0x8c,3;</pre> <p>There are four spaces between SEAGATE DAT and DAT72-000.</p>
6466617	O	O		Performing a hot plug operation with the PCI-Express slot too quickly interrupts a PCI leaf reset and occurs the following error: <code>cfgadm: Component system is busy error</code>	Pause a few seconds between the issue of each <code>cfgadm -c</code> command.
6481002	O	O	O	Installing the Oracle Solaris OS from the network using certain PCI-Express cards may cause a panic.	If you are using a Sun PCI-E Dual Gigabit Ethernet MMF Adapter or a Sun PCI-E Dual Gigabit Ethernet UTP Adapter, do not install the Oracle Solaris OS using either of these cards. Instead, use other network devices, such as the onboard Gigabit Ethernet or another network device.

TABLE 3-4 Oracle Solaris OS Issues and Workarounds for All Supported Releases (*Continued*)

CR ID	M4000 M8000			Description	Workaround
	M3000	M4000	M9000		
6515648	O	O		"Replumb Failed" error appears when <code>dr@0:SB1::memory</code> fails.	<p>Once the DR operation is complete, it can be plumbed up manually.</p> <p>Example steps to re-plumb the interface manually:</p> <pre># ifconfig interface plumb xxx.xxx.xxx.xxx netmask + broadcast + up # ifconfig interface group group-name # ifconfig interface addif xxx.xxx.xxx.xxx -failover deprecated up</pre> <p>This workaround assumes that the <code>/etc/hostname.interface</code> file is correctly configured for the IPMP group and does not need any modification. The IP addresses used in the example above should match what was previously used and what matches the <code>/etc/hostname.<interface></code> file.</p>
6516135	O	O		<code>Ap_Id</code> format and devices may not be shown correctly by <code>cfgadm(1M)</code> .	<p>Use the following operations to display all of the PCI slots.</p> <ol style="list-style-type: none"> 1) <code>devfsadm</code> (at Oracle Solaris OS prompt) 2) <code>cfgadm</code>
6519290	O	O	O	Large amounts of I/O on swap devices can cause the system to appear hung by overwhelming the I/O system. The amount of I/O required can be generated through a number of ways, eg memory shortage, heavy use of <code>/tmp</code> etc.	<p>Set the following to <code>/etc/system</code> and then reboot the domain:</p> <pre>set maxfastscan=0x2000</pre>
6522017	O	O		DR and ZFS may not be used in the same domain.	<p>Reduce the amount of kernel memory that ZFS can allocate by setting the <code>zfs_arc_max</code> parameter in the <code>/etc/system</code> file. The following example sets the maximum size to 512 Mbytes.</p> <pre>set zfs_arc_max=0x2000000</pre>

TABLE 3-4 Oracle Solaris OS Issues and Workarounds for All Supported Releases (*Continued*)

CR ID	M4000 M8000			Description	Workaround
	M3000	M4000	M9000		
6529714	O	O		Warning messages occur while trying to configure more than four PCIe Quad-port Gigabit Ethernet UTP Low Profile Adapter (X4447A-Z) or PCIe Dual 10 Gigabit Ethernet Fiber XFP Low Profile Adapter (X1027A-Z) into one I/O Boat.	No workaround is available.
6530753	O	O		Some of the PCI slots in the External I/O Expansion Unit PCI slots are not displayed during a normal boot operation.	Use one of the following operations to display all of the PCI slots. <ul style="list-style-type: none"> • <code>boot -r</code> (at open boot prompt) • <code>devfsadm -C</code> (at Oracle Solaris OS prompt) • <code>cfgadm</code> (twice at Oracle Solaris OS prompt)
6531036	O	O	O	The error message <code>network initialization failed</code> appears repeatedly after a boot net installation.	No workaround is available. This message can be safely ignored.
6532215	O	O	O	<p><code>volfs</code> or <code>dscp</code> service may fail when domain is booted.</p> <pre> svc:/platform/sun4u/dscp:default: Method "/lib/svc/method/svc-dscp start" failed with exit status 95. svc:/system/filesystem/volfs:default: Method or service exit timed out. Killing contract 59.</pre>	Restart the service if the failure is observed. To avoid the problem, issue the following commands. <pre> # svccfg -s dscp setprop start/timeout_seconds=count: 300 # svccfg -s volfs setprop start/timeout_seconds=count: 300 # svcadm refresh dscp # svcadm refresh volfs</pre>
6565553 6611966 6674266	O	O		<p>DR <code>deleteboard(8)</code> and <code>moveboard(8)</code> operations might fail. Example for messages on domain:</p> <pre> drmach: WARNING: Device driver failure: /pci dcs: <xxxx> config_change_state: Hardware specific failure: unconfigure SB1: Device driver failure: /pci</pre>	No workaround is available. Try DR operations again.
6588650	O	O		On occasion, the system is unable to DR after an XSCF failover or XSCF reboot.	No workaround is available.

TABLE 3-4 Oracle Solaris OS Issues and Workarounds for All Supported Releases (*Continued*)

CR ID	M4000 M8000			Description	Workaround
	M3000	M4000	M9000		
6589644			O	After added the system board by DR, when the switching occurred on the redundant XSCF Units, the domain console may hang up.	The console can be recovered by pressing <code>Ctrl-q</code> (the <code>[Ctrl]</code> key and the <code>[q]</code> key).
6592302			O	Unsuccessful DR operation leaves memory partially configured.	Try <code>deleteboard(8)</code> again.
6619344			O	The Sun Crypto Accelerator (SCA) 6000 might not work if hot-plug configured into slot 1.	To avoid the defect, do not hot-plug this card in slot 1.
6625734			O	Systems with large number of processors in a single domain environment may have suboptimal performance with certain workloads.	Use processor sets to bind application processes or LWPs to groups of processors. Refer to the <code>psrset(1M)</code> man page for more information.

TABLE 3-4 Oracle Solaris OS Issues and Workarounds for All Supported Releases (*Continued*)

CR ID	M4000 M8000			Description	Workaround
	M3000	M4000	M9000		
6660168	O	O	O	<p>If a <code>ubc.piowbeue-cpu</code> error occurs on a domain, the Oracle Solaris Fault Management <code>cpumem-diagnosis</code> module might fail, causing an interruption in FMA service.</p> <p>If this happens, you will see the following output in the console log:</p> <pre>SUNW-MSG-ID: FMD-8000-2K, TYPE: Defect, VER: 1, SEVERITY: Minor EVENT-TIME: Fri Apr 4 21:41:57 PDT 2008 PLATFORM: SUNW,SPARC- Enterprise, CSN: 2020642002, HOSTNAME: <hostname> SOURCE: fmd-self-diagnosis, REV: 1.0 EVENT-ID: 6b2e15d7-aa65-6bcc- bcb1-cb03a7dd77e3 DESC: A Solaris Fault Manager component has experienced an error that required the module to be disabled. Refer to http://sun.com/msg/FMD-8000-2K for more information. AUTO-RESPONSE: The module has been disabled. Events destined for the module will be saved for manual diagnosis. IMPACT: Automated diagnosis and response for subsequent events associated with this module will not occur. REC-ACTION: Use <code>fmdump -v -u <EVENT-ID></code> to locate the module. Use <code>fmadm reset <module></code> to reset the module.</pre>	<p>If FMA service fails, issue the following command on the domain to recover:</p> <pre># svcadm clear fmd</pre> <p>Then restart <code>cpumem-diagnosis</code>:</p> <pre># fmadm restart cpumem- diagnosis</pre>
6745410	O	O	O	<p>Boot program ignores the <code>Kadb</code> option which causes the system not to boot.</p>	<p>Use <code>kmdb</code> instead of <code>kadb</code>.</p>

TABLE 3-4 Oracle Solaris OS Issues and Workarounds for All Supported Releases (*Continued*)

CR ID	M4000 M8000			Description	Workaround
	M3000	M4000	M9000		
6765239	O			If a SAS device containing multiple SAS targets is connected to the onboard external SAS interface, it will not work properly. The enumeration of target IDs within the device may change across reboots.	Use a FUJITSU SAS card (SE0X7SA1F/SE0X7SA1X). Alternatively, check for the availability of a patch for this defect.
6794630			O	An attempt to use the GUI to install Oracle Solaris OS in a domain larger than 2TB might fail.	Use the Command Line interface to install Oracle Solaris OS.
6966086	O			bge interface can not enable Jumbo Frame function. This issue is caused on the M3000 server with SPARC64 VII+ processors.	This has been fixed in patch 144563-02. [<i>Workaround</i>] No workaround is available.
7009474	O	O	O	After applying 144563-01 or 144563-02 patch, bge interface does not display link up/down message on console and syslog when plugging/unplugging.	Check the link status by using the "link_state" parameter from the kstat(1M) output.

Oracle Solaris OS Issues Fixed in Oracle Solaris 10 9/10

[TABLE 3-5](#) lists issues that have been fixed in Oracle Solaris 10 9/10 OS. You might encounter them in supported releases earlier than Oracle Solaris 10 9/10.

TABLE 3-5 Oracle Solaris OS Issues Fixed in Oracle Solaris 10 9/10

CR ID	M4000 M8000			Description	Workaround
	M3000	M4000	M9000		
6668237	O	O	O	After DIMMs are replaced the corresponding DIMM faults are not cleared on the domain.	This has been fixed in patch 143527-01. [<i>Workaround</i>] Use the following commands: <code># fmadm repair fmri uuid</code> <code># fmadm rotate</code>

TABLE 3-5 Oracle Solaris OS Issues Fixed in Oracle Solaris 10 9/10 (*Continued*)

CR ID	M3000	M4000 M8000		Description	Workaround
		M4000	M9000		
6872501	O	O	O	If 139555-08 has been applied to the domain, cores are not offlined when requested by the XSCF. This CR effects only Oracle Solaris 10 5/09, Oracle Solaris 10 10/09, and an earlier version of Oracle Solaris OS with patch 139555-08.	This has been fixed in patch 143359-02. [Workaround] Use <code>fmddump(8)</code> with its <code>-v</code> option on the Service Processor to identify the faulty core. Once identified, use <code>psradm(1M)</code> on the domain to offline the core.
6888928	O	O	O	IPMP interface fails since probe packets are not sent through that interface. Problem occurs with M3000/M4000/M5000/M8000/M9000 servers running any Oracle Solaris release running IPMP with patch 141444-09 installed.	This has been fixed in patch 142900-02. [Workaround] Disable probe-based failure detection.

Oracle Solaris OS Issues Fixed in Oracle Solaris 10 10/09

[TABLE 3-6](#) lists issues that have been fixed in Oracle Solaris 10 10/09 OS. You might encounter them in supported releases earlier than Oracle Solaris 10 10/09.

TABLE 3-6 Oracle Solaris OS Issues Fixed in Oracle Solaris 10 10/09

CR ID	M3000	M4000 M8000		Description	Workaround
		M5000	M9000		
6572827	O	O	O	The <code>prtdiag -v</code> command reports PCI bus types incorrectly. It reports "PCI" for PCI-X leaf devices and "UNKN" for legacy PCI devices.	This has been fixed in patch 141444-09. [Workaround] No workaround is available.

TABLE 3-6 Oracle Solaris OS Issues Fixed in Oracle Solaris 10 10/09 (Continued)

CR ID	M4000 M8000			Description	Workaround
	M3000	M5000	M9000		
6724307		O		<p>Scheduler decisions systems are occasionally unbalanced.</p> <p>Sometimes two threads will be on one core (causing both to run at about half speed) while another core is idle. For many OpenMP and similar parallel applications, the application performance is limited by the speed of the slowest thread.</p> <p>Uneven scheduling is not common, perhaps 1 in 50 or 1 in 100 decisions. But if there are 128 threads running, then the application might have at least one uneven schedule event.</p>	<p>This has been fixed in patch 141414-01.</p> <p>[Workaround] Use processor sets to prevent uneven threads to core assignment.</p>
6800734		O	O	<p>The <code>deleteboard(8)</code> command hang in a domain.</p>	<p>This has been fixed in patch 141444-09.</p> <p>No workaround is available.</p>
6816913		O	O	<p>The XSCF <code>showdevices(8)</code> command displays the incorrect processor cache size (MB) for fractional processor cache sizes, such as displaying "5" when the correct display would be "5.5."</p>	<p>Use the <code>prtdiag(1M)</code> command on the domain to report processor information.</p>
6821108		O	O	<p>DR and <code>showdevices(8)</code> command do not work after XSCF reset.</p>	<p>This has been fixed in patch 140589-02.</p> <p>[Workaround] Reset the XSCF service processor twice. Half the SAs (Security Associations) are deleted the first time, half are deleted the second time, so the second addition succeeds and IPsec communication is reestablished.</p>
6827340	O	O	O	<p>DR and Memory patrol might fail due to command error.</p>	<p>This has been fixed in patch 142344-01.</p> <p>No workaround is available.</p>

Oracle Solaris OS Issues Fixed in Oracle Solaris 10 5/09

TABLE 3-7 lists issues that have been fixed in Oracle Solaris 10 5/09 OS. You might encounter them in supported releases earlier than Oracle Solaris 10 5/09.

TABLE 3-7 Oracle Solaris OS Issues Fixed in Oracle Solaris 10 5/09

CR ID	M4000 M8000			Description	Workaround
	M3000	M5000	M9000		
6588555	O	O		<p>M8000/M9000 servers: XSCF failover during DR operation to the permanent memory might cause domain panic.</p> <p>M4000/M5000 servers: XSCF reset during DR operation to the permanent memory might cause domain panic.</p>	<p>This has been fixed in patch 139555-08.</p> <p>[Workaround] M8000/M9000 servers: Do not start an XSCF failover while a DR operation is running. Wait for a DR operation to finish before starting the failover. If you start the failover first, wait for the failover to finish before starting the DR operation.</p> <p>M4000/M5000 servers: Do not start an XSCF reset while a DR operation is running. Wait for a DR operation to finish before starting the reset.</p>
6623226	O	O	O	The Oracle Solaris OS command <code>lockstat(1M)</code> or the <code>dtrace lockstat</code> provider might cause a system panic.	<p>This has been fixed in patch 140336-01.</p> <p>[Workaround] Do not use the Oracle Solaris OS <code>lockstat(1M)</code> command or the <code>dtrace lockstat</code> provider.</p>
6680733	O	O	O	Sun Quad-port Gigabit Ethernet Adapter UTP (QGC) & Sun Dual 10 GigE Fiber XFP Low Profile Adapter (XGF) NICs might panic under high load conditions.	<p>This has been fixed in patch 139570-01.</p> <p>[Workaround] If possible, use the card in x8 slot. Otherwise, there is no workaround.</p>

TABLE 3-7 Oracle Solaris OS Issues Fixed in Oracle Solaris 10 5/09 (Continued)

CR ID	M4000 M8000			Description	Workaround
	M3000	M5000	M9000		
6689757	O	O	O	Sun Dual 10 GigE Fiber XFP Low Profile Adapter (XGF) with a single or improperly installed XFP optical transceivers might cause the following error to show on the console: The XFP optical transceiver is broken or missing.	This has been fixed in patch 139570-01. [Workaround] Check and make sure that both XFP optical transceivers are firmly seated in the housing. Do not mix INTEL and Sun XFP optical transceivers in the same Adapter. Do NOT plumb a port with the ifconfig command if the port does not contain an XFP optical transceiver or it contains one but the transceiver is not in use.
6725885	O			cfgadm will display non-existent M3000 system boards (SB1 to SB15).	This has been fixed in patch 140401-01. The cfgadm output for SB1-SB15 can be ignored.

Oracle Solaris OS Issues Fixed in Oracle Solaris 10 10/08

[TABLE 3-8](#) lists issues that have been fixed in Oracle Solaris 10 10/08 OS. You might encounter them in supported releases earlier than Oracle Solaris 10 10/08.

TABLE 3-8 Oracle Solaris OS Issues Fixed in Oracle Solaris 10 10/08

CR ID	M4000 M8000			Description	Workaround
	M3000	M5000	M9000		
6511374		O	O	Unexpected error messages may be displayed on console after changing the system configuration. Example: WARNING: Translation error source /LSB0/B0/0, PA 3c000000000, target /LSB0/B0/20000000	This has been fixed in patch 137137-09. This message can be safely ignored.

TABLE 3-8 Oracle Solaris OS Issues Fixed in Oracle Solaris 10 10/08 (Continued)

CR ID	M4000 M8000			Description	Workaround
	M3000	M5000	M9000		
6533686	O	O		When XSCF is low on system resources, DR operations involving relocating permanent memory, such as <code>deleteboard(8)</code> or <code>moveboard(8)</code> , might fail with one or more of these errors: SCF busy DR parallel copy timeout This applies only to Quad-XSB configured system boards hosting multiple domains.	This has been fixed in patch 138397-01. [Workaround] Retry the DR operation at a later time.
6535018			O	In Oracle Solaris domains that include SPARC64 VII processors, workloads that make heavy use of the Oracle Solaris kernel might not scale as expected when you increase the thread count to a value greater than 256.	This has been fixed in patch 137111-01. [Workaround] For Oracle Solaris domains that include SPARC64 VII processors, limit domains to a maximum of 256 threads.
6608404			O	Hot-plug of the PCIe Quad-port Gigabit Ethernet UTP Low Profile Adapter (X4447A-Z) in slot 1 might cause other network devices to fail.	To avoid the defect, do not install this adapter in slot 1.

TABLE 3-8 Oracle Solaris OS Issues Fixed in Oracle Solaris 10 10/08 (Continued)

CR ID	M4000 M8000			Description	Workaround
	M3000	M5000	M9000		
6614737	O	O		<p>The DR deleteboard(8) and moveboard(8) operations might hang if any of the following conditions exist:</p> <ul style="list-style-type: none"> • A DIMM has been degraded. • The domain contains system boards with different memory size. 	<p>For Oracle Solaris 10 5/08 or earlier, this has been in patch 137111-01.</p> <p>[Workaround]</p> <p>Avoid performing DR operations if any of the listed conditions exist.</p> <p>To determine whether the system contains degraded memory, use the XSCF showstatus(8) command. For sample output, see “Identifying Degraded Memory in a System” on page 67.</p> <p>To determine whether the domain contains system boards with different memory sizes, display the list of memory sizes using the XSCF showdevices(8) command or the prtdiag(8) command on the domain. For sample of output, see “Identifying Different Memory Sizes in a System Board” on page 67</p> <p>If a DR command hangs, reboot the domain to recover.</p>
6619224			O	<p>For Oracle Solaris domains that include SPARC 64 VII processors, a single domain of 256 threads (128 cores) or more might hang for an extended period of time under certain unusual situations. Upon recovery, the uptime command will show extremely high load averages.</p>	<p>This has been fixed in patch 137111-03.</p> <p>[Workaround]</p> <p>For Oracle Solaris domains that include SPARC 64 VII processors, do not exceed a domain size of 256 virtual CPUs in a single Oracle Solaris domain. This means a maximum of 32 CPU chips in a single domain configuration (maximum configuration for an M8000 server).</p>
6632549	O	O		<p>fmd service on domain might fail to maintenance mode after DR operations.</p>	<p>This has been fixed in patch 138050-01.</p> <p>[Workaround]</p> <p>If fmd service fails, issue the following commands on the domain to recover:</p> <pre># svcadm clear fmd</pre>

TABLE 3-8 Oracle Solaris OS Issues Fixed in Oracle Solaris 10 10/08 (*Continued*)

CR ID	M4000 M8000			Description	Workaround
	M3000	M5000	M9000		
6660197	O	O		DR might cause the domain to hang if either of the following conditions exist: <ul style="list-style-type: none"> • A domain contains 256 or more CPUs. • Memory error occurred and the DIMM has been degraded. 	This has been fixed in patch 138397-01. [Workaround] 1. Set the following parameter in the system specification file (/etc/system): set drmach:drmach_disable_mcopy = 1 2. Reboot the domain.
6679370	O	O	O	The following message may be output on the console during the system booting, the External I/O Expansion Unit adding by hotplug, or the FMEMA operating by DR. SUNW-MSG-ID: SUN4-8000-75, TYPE: Fault, VER: 1, SEVERITY: Critical ... DESC: A problem was detected in the PCI-Express subsystem. Refer to http://sun.com/msg/SUN4-8000-75 for more information. ...	This has been fixed in patch 137137-09. Note - Before adapting the patch, delete the following setting from /etc/system: set pcie_expected_ce_mask = 0x2001 [Workaround] Add the following to /etc/system and then reboot the domain. set pcie_expected_ce_mask = 0x2001
6720261	O	O	O	M4000/M5000/M8000/M9000 servers: If your domain is running one of the following versions of Oracle Solaris OS, the system might panic/trap during normal operation: <ul style="list-style-type: none"> • Oracle Solaris 10 5/08 OS • An earlier version of Oracle Solaris 10 OS with patch ID 127127-11 M3000 server: If your domain is running Oracle Solaris 10 5/08 OS, the system might panic/trap during normal operation:	This has been fixed in patch 137137-09. [Workaround] Set the following parameter in the system specification file (/etc/system): set heaplp_use_stlb=0 Then reboot the domain.

Oracle Solaris OS Issues Fixed in Oracle Solaris 10 5/08

TABLE 3-9 lists issues that have been fixed in Oracle Solaris 10 5/08 OS. You might encounter them in supported releases earlier than Oracle Solaris 10 5/08.

TABLE 3-9 Oracle Solaris OS Issues Fixed in Oracle Solaris 10 5/08

CR ID	M4000 M8000			Description	Workaround
	M3000	M5000	M9000		
5076574			O	A PCIe error can lead to an invalid fault diagnosis on a large M8000/M9000 domain.	For Oracle Solaris 10 8/07 or earlier, this has been fixed in patch 127127-11. [Workaround] Create a file <code>/etc/fm/fmd/fmd.conf</code> containing the following lines; <code>setprop client.buflim 40m</code> <code>setprop client.memlim 40m</code>
6402328			O	System panic might happen due to be over the interrupt number limit when one domain has seven or more IOUA cards.	For Oracle Solaris 10 8/07 or earlier, this has been fixed in patch 127127-11. [Workaround] Use six or less IOUA cards on one domain.
6472153		O	O	If you create an Oracle Solaris OS Flash archive on a non-M4000/M5000/M8000/M9000 sun4u server and install it on a M4000/M5000/M8000/M9000 sun4u server, the console's TTY flags will not be set correctly. This can cause the console to lose characters during stress.	For Oracle Solaris 10 8/07 or earlier, this has been fixed in patch 137046-01. [Workaround] Just after installing Oracle Solaris OS from an Oracle Solaris Flash archive, telnet into the M4000/M5000/M8000/M9000 server to reset the console's TTY flags a follows: <pre># sttydefs -r console # sttydefs -a console -i "9600 hupcl opost onlcr crtscts" -f "9600"</pre> This procedure is required only once.

TABLE 3-9 Oracle Solaris OS Issues Fixed in Oracle Solaris 10 5/08 (*Continued*)

CR ID	M4000 M8000			Description	Workaround
	M3000	M5000	M9000		
6505921			O	Correctable error on the system PCIe bus controller generates an invalid fault.	For Oracle Solaris 10 8/07 or earlier, this has been fixed in 120011-14 and 125369-05. [Workaround] Contact a qualified service engineer.
6522433			O	O	After the CPU hardware error occurred, the <code>fmddump(1M)</code> command on the domain may display an incorrect faulty component. [Workaround] Check system status on XSCF.
6527811			O	O	The <code>showhardconf(8)</code> command on the XSCF cannot display PCI card information that is installed in External I/O Expansion Unit, if the External I/O Expansion Unit is configured using PCI hotplug. No workaround is available.

TABLE 3-9 Oracle Solaris OS Issues Fixed in Oracle Solaris 10 5/08 (Continued)

CR ID	M4000 M8000			Description	Workaround
	M3000	M5000	M9000		
6536564		O	O	<p>showlogs(8) and showstatus(8) command on XSCF might report wrong I/O component due to wrong diagnosis by Oracle Solaris Fault management Architecture when faults in I/O devices occur.</p>	<p>For Oracle Solaris 10 8/07 or earlier, this has been fixed in patch 125369-05.</p> <p>[Workaround]</p> <p>To avoid this problem, issue the following commands on the domain.</p> <pre># cd /usr/platform/SUNW,SPARC-Enterprise/lib/fm/topo/plugins # mv ioboard.so ioboard.so.orig # svcadm restart fmd</pre> <p>If the following messages are displayed on the domain, contact a service engineer.</p> <p>Example:</p> <pre>SUNW-MSG-ID: SUNOS-8000-1L, TYPE: Defect, VER: 1, SEVERITY: Minor EVENT-TIME: Sun May 6 18:22:24 PDT 2007 PLATFORM: SUNW,SPARC-Enterprise, CSN: BE80601007, HOSTNAME: sparc</pre>
6545143		O	O	<p>There is a low probability that a system panic can occur during trap processing of a TLB miss for a user stack address. The problem can occur if the user stack is unmapped concurrently with the user process executing a flush windows trap (ta 3). The panic message will contain the following string:</p> <pre>bad kernel MMU trap at TL 2</pre>	<p>For Oracle Solaris 10 8/07 or earlier, this has been fixed in patch 127111-08.</p> <p>No workaround is available.</p>

TABLE 3-9 Oracle Solaris OS Issues Fixed in Oracle Solaris 10 5/08 (Continued)

CR ID	M4000 M8000			Description	Workaround
	M3000	M5000	M9000		
6545685	O	O		<p>If the following message displayed on the OS console, memory degradation or XSB deconfiguration may occur in the subsequent reboot.</p> <p>Example: <code>mc-op1: WARNING: mc-op1 rewrite timeout on /LSB0/B0</code></p>	<p>For Oracle Solaris 10 8/07 or earlier, this has been fixed in patch 127111-08.</p> <p>[Workaround] Add the following to <code>/etc/system</code> and then reboot the domain: set mc-op1: mc_max_rewrite_loop = 20000</p>
6546188	O	O		<p>The system panics when running hotplug (<code>cfgadm(1M)</code>) and DR operations (<code>addboard(8)</code> and <code>deleteboard(8)</code>) on the following adapters:</p> <ul style="list-style-type: none"> • PCIe Quad-port Gigabit Ethernet UTP Low Profile Adapter (X4447A-Z) • PCIe Dual 10 Gigabit Ethernet Fiber XFP Low Profile Adapter (X1027A-Z) 	<p>For Oracle Solaris 10 8/07, this has been fixed in patch 127741-01.</p> <p>No workaround is available.</p>
6551356	O	O		<p>The system panics when running hotplug (<code>cfgadm(1M)</code>) to configure a previously unconfigured adapter. The message "WARNING: PCI Expansion ROM is not accessible" will be seen on the console shortly before the system panic. The following cards are affected by this defect:</p> <ul style="list-style-type: none"> • PCIe Quad-port Gigabit Ethernet UTP Low Profile Adapter (X4447A-Z) • PCIe Dual 10 Gigabit Ethernet Fiber XFP Low Profile Adapter (X1027A-Z) 	<p>For Oracle Solaris 10 8/07, this has been fixed in patch 127741-01.</p> <p>[Workaround] Perform <code>cfgadm -c disconnect</code> to completely remove the card. After waiting at least 10 seconds, the card may be configured back into the domain using the <code>cfgadm -c configure</code> command.</p>
6559504	O	O		<p>Messages of the form <code>nxge: "NOTICE: nxge_ipp_eccue_valid_check: rd_ptr = nnn wr_ptr = nnn"</code> will be observed on the console with the following adapters:</p> <ul style="list-style-type: none"> • PCIe Quad-port Gigabit Ethernet UTP Low Profile Adapter (X4447A-Z) • PCIe Dual 10 Gigabit Ethernet Fiber XFP Low Profile Adapter (X1027A-Z) 	<p>For Oracle Solaris 10 8/07, this has been fixed in patch 127741-01.</p> <p>[Workaround] These messages can be safely ignored.</p>

TABLE 3-9 Oracle Solaris OS Issues Fixed in Oracle Solaris 10 5/08 (*Continued*)

CR ID	M4000 M8000			Description	Workaround
	M3000	M5000	M9000		
6564934	O	O		<p>Performing a DR deleteboard(8) operation on a board which includes Permanent Memory when using the following adapters results in broken connections:</p> <ul style="list-style-type: none"> • PCIe Quad-port Gigabit Ethernet UTP Low Profile Adapter (X4447A-Z) • PCIe Dual 10 Gigabit Ethernet Fiber XFP Low Profile Adapter (X1027A-Z) 	<p>For Oracle Solaris 10 8/07, this has been fixed in patch 127741-01.</p> <p>[Workaround] Re-configure the affected network interfaces after the completion of the DR operation. For basic network configuration procedures, refer to the <code>ifconfig</code> man page for more information.</p>
6568417	O	O		<p>After a successful CPU DR deleteboard(8) operation, the system panics when the following adapters are in use:</p> <ul style="list-style-type: none"> • PCIe Quad-port Gigabit Ethernet UTP Low Profile Adapter (X4447A-Z) • PCIe Dual 10 Gigabit Ethernet Fiber XFP Low Profile Adapter (X1027A-Z) 	<p>For Oracle Solaris 10 8/07 or earlier, this has been fixed in patch 127111-02.</p> <p>[Workaround] Add the following line to <code>/etc/system</code> and reboot the system: set ip:ip_soft_rings_cnt=0</p>
6571370	O	O		<p>Use of the following adapters have been observed to cause data corruption in stress test under laboratory conditions:</p> <ul style="list-style-type: none"> • PCIe Quad-port Gigabit Ethernet UTP Low Profile Adapter (X4447A-Z) • PCIe Dual 10 Gigabit Ethernet Fiber XFP Low Profile Adapter (X1027A-Z) 	<p>For Oracle Solaris 10 8/07, this has been fixed in patch 127741-01.</p> <p>[Workaround] Add the following line in <code>/etc/system</code> and reboot the system: set nxge:nxge_rx_threshold_hi=0</p>
6584984		O		<p>On the M8000/M9000 servers, <code>busstat(1M)</code> command may cause rebooting of domains.</p>	<p>For Oracle Solaris 10 8/07 or earlier, this has been fixed in patch 127127-11.</p> <p>No workaround is available. Do not use <code>busstat(1M)</code> command. Check for the availability of a patch for this defect.</p>
6589546	O	O		<p><code>prtdiag(8)</code> command does not show all I/O devices of the following adapters:</p> <ul style="list-style-type: none"> • Sun StorageTek Enterprise Class 4Gb Dual-Port Fibre Channel PCIe HBA (XSEFC402AF) • Sun StorageTek Enterprise Class 4Gb Single-Port Fibre Channel PCIe HBA (XSEFC401AF) 	<p>For Oracle Solaris 10 8/07 or earlier, this has been fixed in patch 127127-11.</p> <p>[Workaround] Use <code>prtdiag -v</code> for full output.</p>

Oracle Solaris OS Issues Fixed in Oracle Solaris 10 8/07

TABLE 3-10 lists issues that have been fixed in Oracle Solaris 10 8/07 OS. You might encounter them in supported releases earlier than Oracle Solaris 10 8/07.



Caution – CR ID 6534471: Improper handling of large page in kernel memory may cause random panics. Implement the workaround for CR ID 6534471 or check for the availability of a patch and install it immediately. This bug has been fixed by 125100-06 and Oracle Solaris 10 8/07.

TABLE 3-10 Oracle Solaris OS Issues Fixed in Oracle Solaris 10 8/07

CR ID	M3000	M4000	M5000	M8000	M9000	Description	Workaround
6303418					O	A M9000 server with a single domain and 11 or more fully populated system boards might hang under heavy stress.	For Oracle Solaris 10 11/06, this has been fixed in patch 120011-01. [Workaround] Do not exceed 170 CPU threads. Limit the number of CPU threads to one per CPU core by using the Oracle Solaris <code>psradm</code> command to disable the excess CPU threads. For example, disable all odd-numbered CPU threads.
6416224					O	O	System performance can degrade using a single NIC card with more than 5,000 connections. [Workaround] Use multiple NIC cards to split network connections.
6441349					O	O	The system may hang if there is an I/O error in the system. No workaround is available.
6485555					O	O	On-board Gigabit Ethernet NVRAM corruption could occur due to a race condition. The window of opportunity for this race condition is very small. No workaround is available.

TABLE 3-10 Oracle Solaris OS Issues Fixed in Oracle Solaris 10 8/07 (Continued)

CR ID	M4000 M8000			Description	Workaround
	M3000	M5000	M9000		
6496337	O	O		<p>The "cpumem-diagnosis" module may fail to load after uncorrectable error(UE) panic.</p> <p>Systems will function correctly but events normally automatically diagnosed by FMA using this module will require manual diagnosis.</p> <p>Example:</p> <pre>SUNW-MSG-ID: FMD-8000-2K, TYPE: Defect, VER: 1, SEVERITY: Minor EVENT-TIME: Thu Feb 15 15:46:57 JST 2007 PLATFORM: SUNW,SPARC- Enterprise, CSN: BE80601007, HOSTNAME: col2-ff-em7-d0</pre>	<p>For Oracle Solaris 10 11/06, this has been fixed in patch 125369-05.</p> <p>[Workaround]</p> <p>If problem occurred, implement the following workaround:</p> <ol style="list-style-type: none"> 1. Remove the following file. <pre># rm /var/fm/fmd/ckpt/cpumem- diagnosis/cpumem-diagnosis</pre> 2. Restart fmd service. <pre># svcadm restart fmd</pre> <p>To avoid this problem in advance, add "rm -f /var/fm/fmd/ckpt/cpumem-diagnosis/cpumem-diagnosis" in /lib/svc/method/svc-dumpadm file as below.</p> <pre># # We haven't run savecore on a dump device yet # savedev=none rm -f /var/fm/fmd/ckpt/cpumem- diagnosis/cpumem-diagnosis #</pre>
6498283	O	O		<p>Using the DR deleteboard(8) command while psradm operations are running on a domain might cause a system panic.</p>	<p>For Oracle Solaris 10 11/06, this has been fixed in patch 120011-07.</p> <p>No workaround is available.</p>

TABLE 3-10 Oracle Solaris OS Issues Fixed in Oracle Solaris 10 8/07 (Continued)

CR ID	M4000 M8000			Description	Workaround
	M3000	M5000	M9000		
6499304	O	O		<p>CPU isn't offlined and unexpected message is displayed on console when many correctable error(CE) occurs.</p> <p>Example: SUNW-MSG-ID: FMD-8000-11, TYPE: Defect, VER: 1, SEVERITY: Minor EVENT-TIME: Fri Feb 2 18:31:07 JST 2007 PLATFORM: SPARC-Enterprise, CSN: BE80601035, HOSTNAME: FF2-35-0</p>	<p>For Oracle Solaris 10 11/06, this has been fixed in patch 125369-05.</p> <p>[Workaround] Check CPU status on XSCF.</p>
6502204	O	O		<p>Unexpected error messages may be displayed on console on booting after CPU UE panic.</p> <p>Example: SUNW-MSG-ID: FMD-8000-11, TYPE: Defect, VER: 1, SEVERITY: Minor EVENT-TIME: Tue Jan 9 20:45:08 JST 2007 PLATFORM: SUNW,SPARC- Enterprise, CSN: 2030636002, HOSTNAME: P2-DC1-16-d0</p>	<p>For Oracle Solaris 10 11/06, this has been fixed in patch 125369-05.</p> <p>[Workaround] If you see unexpected messages, use the XSCF command <code>showdomainstatus(8)</code> to check system status on XSCF.</p>
6502750	O	O		<p>Notification message for inserted or removed card by PCI hot plug may not output.</p>	<p>For Oracle Solaris 10 11/06, this has been fixed in patch 120011-08.</p> <p>No workaround is available.</p>
6508432	O	O		<p>Many correctable errors (CE) may occur, and despite these are the correctable errors, domain may panic.</p>	<p>For Oracle Solaris 10 11/06, this has been fixed in patch 120011-08.</p> <p>[Workaround] Set the following to <code>/etc/system</code> and then reboot the domain: set pci:pcie_aer_ce_mask = 0x2001</p>
6508434	O	O		<p>The domain may panic when an additional PCI-X card is installed or a PCI-X card is replaced by using PCI hot plug.</p>	<p>For Oracle Solaris 10 11/06, this has been fixed in patch 120011-08.</p> <p>[Workaround] Do not insert a different type of PCI-X card on the same PCI slot by using PCI hot plug.</p>

TABLE 3-10 Oracle Solaris OS Issues Fixed in Oracle Solaris 10 8/07 (Continued)

CR ID	M4000 M8000			Description	Workaround
	M3000	M5000	M9000		
6509337	O	O		s10s_u3 wanboot fails - The server returned 416: Requested Range Not Satisfiable.	No workaround is available.
6510861	O	O		When Dual-Channel Ultra320 SCSI Card (SE0X7SC2F, SE0X7SC2X) is mounted, correctable errors(CE) occur and system may panic.	For Oracle Solaris 10 11/06, this has been fixed in patch 120011-08. [Workaround] Add the following entry to the /etc/system file and then reboot the system: set pcie:pcie_aer_ce_mask = 0x31c1
6520990	O	O		Domain may cause a panic when deleteboard(8) command for kernel board by using Dynamic Reconfiguration (DR).	For Oracle Solaris 10 11/06, this has been fixed in patch 120011-08. [Workaround] To mask this error, add the following entry to the /etc/system file. set drmach:fmem_timeout = 30
6527781		O		The cfgadm command fails while moving the DVD/Tape drive unit between two domains.	For Oracle Solaris 10 11/06, this has been fixed in patch 125081-06. No workaround is available. To reconfigure DVD/Tape drive unit, execute <code>reboot -r</code> from the domain exhibiting the problem.
6530178	O	O		DR addboard(8) command can hang. Once problem is observed, further DR operations are blocked. Recovery requires reboot of the domain.	For Oracle Solaris 10 11/06, this has been fixed in patch 120011-07. No workaround is available.
6530288	O	O		Ap_Id format may not be shown correctly by cfgadm(1M) command.	For Oracle Solaris 10 11/06, this has been fixed in patch 120011-07. No workaround is available.

TABLE 3-10 Oracle Solaris OS Issues Fixed in Oracle Solaris 10 8/07 (*Continued*)

CR ID	M4000 M8000			Description	Workaround
	M3000	M5000	M9000		
6534471	O	O		Systems may panic/trap during normal operation.	For Oracle Solaris 10 11/06, this has been fixed in patch 125100-06. If a patch is not available, disable the kernel large page sTLB programming. In the file <code>/etc/system</code> , change the variable <code>heaplp_use_stlb</code> to 0: set heaplp_use_stlb=0
6535564	O	O		PCI hot plug to PCI slot #0, #1 or External I/O Expansion Unit may fail on XSB added by DR.	For Oracle Solaris 10 11/06, this has been fixed in patch 120011-08. [Workaround] Use DR instead of PCI hot plug if need to add or remove PCI card on the XSB.
6539084	O	O		Under Oracle Solaris 10 11/06, there is a low probability of a domain panic during reboot when the PCIe Quad-port Gigabit Ethernet UTP Low Profile Adapter (X4447A-Z) is present in a domain.	No workaround is available.
6539909	O	O		Under Oracle Solaris 10 11/06, do not use the following adapters for network access when you are using the <code>boot net install</code> command to install the Oracle Solaris OS: <ul style="list-style-type: none"> • PCIe Quad-port Gigabit Ethernet UTP Low Profile Adapter (4447A-Z/X4447A-Z) • PCIe Dual 10 Gigabit Ethernet Fiber XFP Low Profile Adapter (1027A-Z/X1027A-Z) 	Use an alternate type of adapter or onboard network device to install the Oracle Solaris OS via the network.
6542632	O	O		Memory leak in PCIe module if driver attach fails.	For Oracle Solaris 10 11/06, this has been fixed in patch 120011-09. No workaround is available.

Software Documentation Updates

This section contains late-breaking software information that became known after the documentation set was published and corrections in the M3000/M4000/M5000/M8000/M9000 servers software documentation.

The corrections for *SPARC Enterprise M3000/M4000/M5000/M8000/M9000 Servers XSCF Reference Manual*, if not otherwise specified, also apply to the man pages which XSCF provides. And they supersede the information on the man pages.

TABLE 3-11 lists known documentation updates.

TABLE 3-11 Software Documentation Updates

Title	Page Number	Update
SPARC Enterprise M3000/M4000/M5000/M8000/M9000 Servers Administration Guide	44	The description, "The HTTPS service starts immediately after being enabled.", in step 3 of section "To Enable or Disable the Service Processor HTTPS Service" will be changed as follows: With disable, the HTTPS service stops immediately. With enable, the HTTPS service starts after the XSCF is reset by execution of the <code>rebootxscf(8)</code> command.
XSCF man pages	<code>prtf(8)</code> command	XSCF does not support a redirection of an output. The following description will be removed. Output can be redirected to a file.
SPARC Enterprise M3000/M4000/M5000/M8000/M9000 Servers XSCF Reference Manual and XSCF man pages	<code>setupfru(8)</code> command	The following description also applies to M4000/M5000 servers: Although a CMU with two CPUs can be configured into Quad-XSB mode on an M8000/M9000 server, the server generates a "configuration error" message for those XSBs that do not have a CPU and memory.

Miscellaneous Information

Identifying Degraded Memory in a System

1. Log in to XSCF.
2. Type the following command:

```
XSCF> showstatus
```

The following example identifies that DIMM number 00A on CMU#3 has degraded memory.

```
XSCF> showstatus
      CMU#3 Status:Normal;
*     MEM#00A Status:Degraded;
```

Identifying Different Memory Sizes in a System Board

To identify if the domain contains system boards with different memory sizes, you can use either of the following commands to display the list of memory sizes:

- `showdevices(8)` command on the XSCF
- `prtdiag(1M)` command on the domain

Using the `showdevices` Command

1. Log in to XSCF.

2. Type the following command:

```
XSCF> showdevices -d domain_id
```

The following example displays 00-0 has 64GB of memory while the other system boards have 16GB.

```
XSCF> showdevices -d 1
Memory:
-----

```

DID	XSB	board mem MB	perm mem MB	base address	domain mem MB	target XSB	deleted mem MB	remaining mem MB
01	00-0	63680	0	0x0000004000000000	260288			
01	03-0	16384	7384	0x0000034000000000	260288			
01	03-1	16384	0	0x0000030000000000	260288			
01	03-2	16384	0	0x000002c000000000	260288			
01	03-3	16384	0	0x0000028000000000	260288			

Using the prtdiag Command to Identify Memory Size

- On the domain, execute the prtdiag command.

```
# prtdiag
```

The following example displays different memory sizes.

```
# prtdiag
===== Memory Configuration =====

```

LSB	Memory Group	Available Size	Memory Status	DIMM Size	# of DIMMs	Mirror Mode	Interleave Factor
00	A	32768MB	okay	2048MB	16	no	8-way
00	B	32768MB	okay	2048MB	16	no	8-way
03	A	8192MB	okay	2048MB	4	no	2-way
03	B	8192MB	okay	2048MB	4	no	2-way
04	A	8192MB	okay	2048MB	4	no	2-way
04	B	8192MB	okay	2048MB	4	no	2-way
05	A	8192MB	okay	2048MB	4	no	2-way
05	B	8192MB	okay	2048MB	4	no	2-way
06	A	8192MB	okay	2048MB	4	no	2-way

Identifying Permanent Memory in a Target Board

1. Log in to XSCF.

2. Execute the following command:

```
XSCF> showdevices -d domain_id
```

The following example shows a display of the `showdevices -d` command where 0 is the *domain_id*.

```
XSCF> showdevices -d 0
...
Memory:
-----

```

DID	XSB	board mem MB	perm mem MB	base address	domain mem MB	target XSB	deleted mem MB	remaining mem MB
00	00-0	8192	0	0x0000000000000000	24576			
00	00-2	8192	1674	0x000003c000000000	24576			
00	00-3	8192	0	0x0000034000000000	24576			

```
...
```

The entry for column 4 perm mem MB indicates the presence of permanent memory if the value is non-zero.

The example shows permanent memory on 00-2, with 1674 MB.

If the board includes permanent memory, when you execute the `deleteboard(8)` command or the `moveboard(8)` command, the following notice appears:

```
System may be temporarily suspended, proceed? [y|n]:
```


Information About Hardware of M3000 Server

This section describes the special instructions and the issues about the M3000 server hardware.

- [“Notes and Limitations” on page 71](#)
- [“Hardware RAID Function” on page 75](#)
- [“Hardware Documentation Updates” on page 75](#)

Notes and Limitations

Notes on Hardware RAID

Notes on Using the Hardware RAID

- Make backup copies of important data and programs periodically. In some failures, rebuild of hardware RAID and the data restore from the backup media might become necessary.
- To ensure data integrity in time of power failure, it is recommended to use an uninterruptible power supply (UPS).
- If you require higher availability such as the controller or the data path redundancy, use the dedicated RAID system.

Notes on Building or Deleting the Hardware RAID

- The data in the disk drive is not secured during the build or the deletion of a hardware RAID. When you newly build a hardware RAID while the system is running, or delete the built hardware RAID once, do not fail to make backup copies of the data. After building a hardware RAID, you need to install data newly or restore data from the backup media.
- The hardware RAID build or the synchronization associated with maintenance takes about 180 minutes for a 300 GB HDD with unloaded condition. For 600 GB HDD, it takes about 360 minutes.
- If there is a system restart during the hardware RAID build or synchronization, the build/synchronization must be started again from the beginning.
- When the hardware RAID applied, the volume size is smaller than the size of original disk.

Notes on Operating the Hardware RAID

In some cases, RAID controller cannot conclude the disk drive is completely in failure, and system slowdown might occur. To do maintenance in this status, follow the procedures below.

1. **Delete the hardware RAID.**
2. **Replace all the member disks related to the hardware RAID.**
3. **Rebuild the hardware RAID.**
4. **Restore the data from the backup media.**

Notes on `raidctl(1M)` Command

The following options of the `raidctl(1M)` command can not be used because the hardware specifications do not support them.

- `raidctl -C -r 1E` (To create a RAID 1E)
- `raidctl -c -r 1E` (To create a RAID 1E)
- `raidctl -a` (To assign hot-spare disks)
- `raidctl -p` (To set the cache)
- `raidctl -C -z` (To specify the volume capacity)

Notes on DVD Drive and Discs

See the "Notes on DVD Drives and Discs in SPARC Enterprise" on the website below before using the CD/DVD discs in the standard DVD drive mounted in this server.

<http://www.fujitsu.com/sparcenterprise/manual/>

Notes on the Use of USB Memory

To execute the `dumpconfig(8)`, `restoreconfig(8)` or `snapshot(8)` command, if you specify USB memory as the destination to store data, prepare the USB memory as a medium in advance.

The data stored will include the information about the system. To use USB memory, you need to pay attention to the management of the USB memory in which the data stored, from the data security viewpoint.

We do not provide guarantees to every USB memory from any manufacturers that currently on the market against its connectivity to XSCF and proper operation. Depending on the USB memory in use, defects such as the XSCF firmware error or reset may occur. In case such defects occurred, stop the use of USB memory immediately.

To connect the USB memory to the USB port for XSCF, connect the USB memory directly to the USB port. If connected via USB hub or USB extension cables, it may cause errors.

Power Control and Operator Panel Mode Switch

Note – Before using the RCI function, see "[Notes on RCI Function](#)" on page 13.

When you use the remote power control utilizing the RCI function or the automatic power control system (APCS), you can disable this remote power control or the APCS by setting the mode switch to Service mode on the operator panel.

Disabling these features ensures that you do not unintentionally switch the system power on or off during maintenance. Note that system power off with the APCS cannot be disabled with the mode switch. Therefore, be sure to turn off automatic power control via APCS before starting maintenance.

If you switch the mode while using the RCI or the automatic power control, the system power is controlled as follows.

TABLE 4-1 RCI and APCS Control with Mode Switch

Function	Mode Switch	
	Locked	Service
RCI	Remote power-on/power-off operations are enabled.	Remote power-on/power-off operations are disabled.
APCS	Automatic power-on/power-off operations are enabled.	Automatic power-on is disabled, but power-off remains enabled.

To use the RCI function, see the *SPARC Enterprise M3000/M4000/M5000/M8000/M9000 Servers RCI Build Procedure* and the *SPARC Enterprise M3000/M4000/M5000/M8000/M9000 Servers RCI User's Guide*.

To use the APCS, see the *Enhanced Support Facility User's Guide for Machine Administration Automatic Power Control Function (Supplement Edition)*.

Limitation for 1027A-Z/X1027A-Z

For 1027A-Z/X1027A-Z, PCIe Dual 10 Gigabit Ethernet Fiber XFP cards, this maximum limit apply:

- No more than one card in an M3000 server.

Limitation for 4447A-Z/X4447A-Z

For PCIe Quad-port Gigabit Ethernet UTP Low Profile Adapter (4447A-Z/X4447A-Z), this maximum limit apply:

- No more than four cards in an M3000 server.

Patches for Emulex PCI Express (PCIe) Adapters

The following Emulex PCIe adapters require drivers supplied in patch 120222-26:

- Sun StorageTek Enterprise Class 4Gb Dual-Port Fibre Channel PCIe HBA (XSEFC402AF)
- Sun StorageTek Enterprise Class 4Gb Single-Port Fibre Channel PCIe HBA (XSEFC401AF)

Hardware RAID Function

RAID technology enables the construction of a logical volume made up of several physical disks to provide data redundancy, improved performance, or both.

The on-board SAS controller of the M3000 server which consists of the SPARC64 VII+ processors supports RAID 1 (mirroring) volumes using the Oracle Solaris OS `raidctl` utility.

Supported Conditions

This section lists supported conditions for the hardware RAID.

TABLE 4-2 Supported Conditions for the Hardware RAID

Item	Description
Required Oracle Solaris OS patches	At this time, no patches are required.
Required ESF (Enhanced Support Facility) patches	3.2 or later
XSCF firmware	XCP 1101 or later
RAID level	RAID 1 (IM: Integrated Mirror) only. Two member disks can be configured per RAID volume.
Disk drive	The member disks in a single RAID volume shall be made up of disk drives of the same capacity and of the same rotational speed. Solid State Drive (SSD) is not supported.
Number of RAID volumes	Up to two RAID volumes on a server.

Hardware Documentation Updates

This section contains late-breaking hardware information that became known after the documentation set was published and corrections in the M3000 server hardware documentation.

TABLE 4-3 lists known documentation updates.

TABLE 4-3 Hardware Documentation Updates

Title	Page Number	Update
SPARC Enterprise M3000 Server Installation Guide	2-4	"B-type plug" in the Note in "2.2.1.2 Power Cord Specifications" should be substituted with "the plug with lock function."
	3-12	The step 1 "Confirm that the server is powered on." in "3.5.2 Checking the Dual-Power Feed" will be changed to "Confirm that the system is powered on by checking the output of the <code>showdomainstatus -a</code> command from the XSCF Shell."
	4-6	4.5 "Verifying Operation by Running Oracle VTS" Step 2 The following description will be deleted: For details on items to be diagnosed, see the <i>Oracle VTS Test Reference Manual</i> .
SPARC Enterprise M3000 Server Service Manual	4-3	The following note will be added:
	6-2	Note - To activate a hardware RAID boot volume after replacing the MBU of an M3000 server with SPARC64 VII+ processors, see Appendix F, "Reactivating a Hardware RAID Boot Volume" on page F-1.
	Appendix F	The procedures for reactivating a hardware RAID boot volume will be added. See " Reactivating a Hardware RAID Boot Volume " on page 76 for detail.

Updates of the SPARC Enterprise M3000 Server Service Manual

The following information supersedes the information in the *SPARC Enterprise M3000 Server Service Manual*.

Reactivating a Hardware RAID Boot Volume

This appendix explains how to reactivate a hardware RAID boot volume after replacing the MBU of an M3000 server with the SPARC64 VII+ processors. Non-boot RAID volumes can be reactivated after booting with the Oracle Solaris `raidctl` command.

The MBU contains the RAID controller. When the MBU is replaced, the disks comprising the RAID boot volume must be reactivated to be able to boot. This is done from OBP via the OBP command `activate-volume`.

1. Confirm that the RAID volume is no longer listed.

```
{0} ok probe-scsi-all

pci@0,600000/pci@0/pci@0/scsi@0
MPT Version 1.05, Firmware Version 1.31.00.00

arget 4
Unit 0 Removable Read Only device      TEAC      DV-W28S-V      J.0B
SATA device PhyNum 4
```

2. Select the device and confirm that the RAID volume is reported but inactive.

```
{0} ok select /pci@0,600000/pci@0/pci@0/scsi@0

{0} ok show-volumes
Volume 0 Target 82 Type IM (Integrated Mirroring)
Optimal Enabled Inactive
2 Members                               585805824 Blocks, 299 GB
Disk 1
Primary Online
Target 0          FUJITSU MBD2300RC  3702
Disk 0
Secondary Online
Target 1          FUJITSU MBD2300RC  3702
```

3. Use the activate-volume command to activate the RAID volume.

```
{0} ok 0 activate-volume
Volume 0 is now activated

{0} ok show-volumes
Volume 0 Target 0 Type IM (Integrated Mirroring)
Degraded Enabled Resync In Progress
2 Members                               585805824 Blocks, 299 GB
Disk 1
Primary Online
Target 8          FUJITSU MBD2300RC  3702
Disk 0
Secondary Online Out Of Sync
Target 1          FUJITSU MBD2300RC  3702
```

Note – If there are multiple RAID volumes, they must be activated in descending order, as shown below.

```
{0} ok 1 activate-volume
Volume 1 is now activated
{0} ok 0 activate-volume
Volume 0 is now activated
```

4. Confirm that it is now possible to boot off the RAID volume.

Activating the RAID volume causes it to re-sync.

```
{0} ok unselect-dev
{0} ok setenv auto-boot? false
auto-boot? = false

{0} ok reset-all
Resetting...

{0} ok probe-scsi-all
/pci@0,600000/pci@0/pci@0/scsi@0

MPT Version 1.05, Firmware Version 1.31.00.00

Target 0 Volume 0
Unit 0 Disk LSILOGICLogical Volume 3000 585805824 Blocks,
299 GB
Target 4
Unit 0 Removable Read Only device TEAC DV-W28S-V J.0B
SATA device PhyNum 4

{0} ok boot
Boot device: disk:a File and args:
SunOS Release 5.10 Version Generic_142909-17 64-bit
Copyright (c) 1983, 2010, Oracle and/or its affiliates. All rights
reserved.

# raidctl -S
0 "LSI_1068E"
c0t0d0 2 0.0.0 0.1.0 1 SYNC
0.0.0 GOOD
0.1.0 GOOD
```

```

# raidctl -l c0t0d0
Volume          Size  Stripe  Status  Cache  RAID
      Sub          Size                    Level
      Disk
-----
c0t0d0          279.3G  N/A    SYNC   OFF   RAID1
              0.0.0    279.3G          GOOD
              0.1.0    279.3G          GOOD

Aug 18 21:07:02 m3000 scsi: /pci@0,600000/pci@0/pci@0/scsi@0
(mpt0):
Aug 18 21:07:02 m3000 Physical disk (target 1) is |online|
Aug 18 21:07:02 m3000 scsi: /pci@0,600000/pci@0/pci@0/scsi@0
(mpt0):
Aug 18 21:07:02 m3000 Volume 0 is |enabled||resyncing||optimal|
Aug 18 21:07:02 m3000 scsi: /pci@0,600000/pci@0/pci@0/scsi@0
(mpt0):
Aug 18 21:07:02 m3000 Volume 0 is |enabled||optimal|

# raidctl -l c0t0d0
Volume          Size  Stripe  Status  Cache  RAID
      Sub          Size                    Level
      Disk
-----
c0t0d0          279.3G  N/A    OPTIMAL OFF   RAID1
              0.0.0    279.3G          GOOD
              0.1.0    279.3G          GOOD

```


Information About Hardware of M4000/M5000 Servers

This section describes the special instructions and the issues about the M4000/M5000 servers hardware.

- [“Notes and Limitations” on page 81](#)
 - [“Hardware Issues and Workarounds” on page 84](#)
 - [“Hardware Documentation Updates” on page 84](#)
-

Notes and Limitations

Notes on Server Installation

The plug (NEMA L6-20) of the power cables supplied with the M4000/M5000 servers has the following dimensions.

Confirm in advance that the plug does not become an obstruction when plugged into the input power source at the installation site.

- Outside diameter of the connector part of the plug: 50 mm
- Maximum outside diameter of the plug cover: 57 mm
- Plug cover length from the connector end: 69.9 mm

Notes on DVD Drive and Discs

See the *“Notes on DVD Drives and Discs in SPARC Enterprise”* on the website below before using the CD/DVD discs in the standard DVD drive mounted in this server.

Notes on the Use of USB Memory

To execute the `dumpconfig(8)`, `restoreconfig(8)` or `snapshot(8)` command, if you specify USB memory as the destination to store data, prepare the USB memory as a medium in advance.

The data stored will include the information about the system. To use USB memory, you need to pay attention to the management of the USB memory in which the data stored, from the data security viewpoint.

We do not provide guarantees to every USB memory from any manufacturers that currently on the market against its connectivity to XSCF and proper operation.

Depending on the USB memory in use, defects such as the XSCF firmware error or reset may occur. In case such defects occurred, stop the use of USB memory immediately.

To connect the USB memory to the USB port for XSCF, connect the USB memory directly to the USB port. If connected via USB hub or USB extension cables, it may cause errors.

Power Control and Operator Panel Mode Switch

Note – Before using the RCI function, see [“Notes on RCI Function” on page 13](#).

When you use the remote power control utilizing the RCI function or the automatic power control system (APCS), you can disable this remote power control or the APCS by setting the mode switch to Service mode on the operator panel.

Disabling these features ensures that you do not unintentionally switch the system power on or off during maintenance. Note that system power off with the APCS cannot be disabled with the mode switch. Therefore, be sure to turn off automatic power control via APCS before starting maintenance.

If you switch the mode while using the RCI or the automatic power control, the system power is controlled as follows.

TABLE 5-1 RCI and APCS Control with Mode Switch

Function	Mode Switch	
	Locked	Service
RCI	Remote power-on/power-off operations are enabled.	Remote power-on/power-off operations are disabled.
APCS	Automatic power-on/power-off operations are enabled.	Automatic power-on is disabled, but power-off remains enabled.

To use the RCI function, see the *SPARC Enterprise M3000/M4000/M5000/M8000/M9000 Servers RCI Build Procedure* and the *SPARC Enterprise M3000/M4000/M5000/M8000/M9000 Servers RCI User's Guide*.

To use the APCS, see the *Enhanced Support Facility User's Guide for Machine Administration Automatic Power Control Function (Supplement Edition)*.

Notes on Air Filter

Fujitsu does not handle the air filter which is shown in the *SPARC Enterprise M4000/M5000 Servers Service Manual* as a product.

Limitation for 1027A-Z/X1027A-Z

For PCIe Dual 10 Gigabit Ethernet Fiber XFP Low Profile Adapter (1027A-Z/X1027A-Z), these maximum limits apply:

- No more than two cards per a domain in an M4000 server.
- No more than four cards per a domain in an M5000 server.
- Do not use these cards in an External I/O Expansion Unit.

Limitation for 4447A-Z/X4447A-Z

For PCIe Quad-port Gigabit Ethernet UTP Low Profile Adapter (4447A-Z/X4447A-Z), these maximum limits apply:

- No more than four cards per a domain in an M4000 server.
- No more than eight cards per a domain in an M5000 server.

- No more than four cards in an External I/O Expansion Unit (two per PCIe I/O boat).

Patches for Emulex PCI Express (PCIe) Adapters

The following Emulex PCIe adapters require drivers supplied in patch 120222-26:

- Sun StorageTek Enterprise Class 4Gb Dual-Port Fibre Channel PCIe HBA (XSEFC402AF)
- Sun StorageTek Enterprise Class 4Gb Single-Port Fibre Channel PCIe HBA (XSEFC401AF)

Hardware Issues and Workarounds

Sun Crypto Accelerator 6000

If you are not using the correct version of the Sun Crypto Accelerator (SCA) 6000 driver, hot-plug operations on SCA 6000 can cause the M4000/M5000 servers to panic or hang. Version 1.1 of the SCA6000 driver and firmware supports hot-plug operations after the required bootstrap firmware upgrade has been performed. Version 1.0 of the SCA6000 driver does not support hot-plug and should not be used.

Hardware Documentation Updates

This section contains late-breaking hardware information that became known after the documentation set was published and corrections in the M4000/M5000 servers hardware documentation.

TABLE 5-2 lists known documentation updates.

TABLE 5-2 Hardware Documentation Updates

Title	Page Number	Update
SPARC Enterprise M4000/M5000 Servers Installation Guide	2-4	The following Caution will be added: Caution - Ensure that the circuit breaker is off when installing or removing AC power cords in order to avoid damage to the PSU or system.
	2-8	"B-type plug" in the Note in "2.2.2 Cable Connections" should be substituted with "the plug with lock function."
	3-2	The following step 2 will be added: 2. Verify that the input power breaker is off.
	3-15	The step 1 "Confirm that the system is powered on." in "3.4.2 Checking the Dual-Power Feed" will be changed to "Confirm that the system is powered on by checking the output of the <code>showdomainstatus -a</code> command from the XSCF Shell."

Information About Hardware of M8000/M9000 Servers

This section describes the special instructions and the issues about the M8000/M9000 servers hardware.

- “Notes and Limitations” on page 87
- “Hardware Issues and Workarounds” on page 89
- “Hardware Documentation Updates” on page 90
- “Miscellaneous Information” on page 92

Notes and Limitations

Notes on DVD Drive and Discs

See the “Notes on DVD Drives and Discs in SPARC Enterprise” on the website below before using the CD/DVD discs in the standard DVD drive mounted in this server.

<http://www.fujitsu.com/sparcenterprise/manual/>

Notes on the Use of USB Memory

To execute the `dumpconfig(8)`, `restoreconfig(8)` or `snapshot(8)` command, if you specify USB memory as the destination to store data, prepare the USB memory as a medium in advance.

The data stored will include the information about the system. To use USB memory, you need to pay attention to the management of the USB memory in which the data stored, from the data security viewpoint.

We do not provide guarantees to every USB memory from any manufacturers that currently on the market against its connectivity to XSCF and proper operation. Depending on the USB memory in use, defects such as the XSCF firmware error or reset may occur. In case such defects occurred, stop the use of USB memory immediately.

To connect the USB memory to the USB port for XSCF, connect the USB memory directly to the USB port. If connected via USB hub or USB extension cables, it may cause errors.

Power Control and Operator Panel Mode Switch

Note – Before using the RCI function, see [“Notes on RCI Function” on page 13.](#)

When you use the remote power control utilizing the RCI function or the automatic power control system (APCS), you can disable this remote power control or the APCS by setting the mode switch to Service mode on the operator panel.

Disabling these features ensures that you do not unintentionally switch the system power on or off during maintenance. Note that system power off with the APCS cannot be disabled with the mode switch. Therefore, be sure to turn off automatic power control via APCS before starting maintenance.

If you switch the mode while using the RCI or the automatic power control, the system power is controlled as follows.

TABLE 6-1 RCI and APCS Control with Mode Switch

Function	Mode Switch	
	Locked	Service
RCI	Remote power-on/power-off operations are enabled.	Remote power-on/power-off operations are disabled.
APCS	Automatic power-on/power-off operations are enabled.	Automatic power-on is disabled, but power-off remains enabled.

To use the RCI function, see the *SPARC Enterprise M3000/M4000/M5000/M8000/M9000 Servers RCI Build Procedure* and the *SPARC Enterprise M3000/M4000/M5000/M8000/M9000 Servers RCI User's Guide*.

To use the APCS, see the *Enhanced Support Facility User's Guide for Machine Administration Automatic Power Control Function (Supplement Edition)*.

Limitation for 1027A-Z/X1027A-Z

For PCIe Dual 10 Gigabit Ethernet Fiber XFP Low Profile Adapter (1027A-Z/X1027A-Z), these maximum limits apply:

- No more than six cards per a domain.
- Do not use these cards in an External I/O Expansion Unit.

Limitation for 4447A-Z/X4447A-Z

For PCIe Quad-port Gigabit Ethernet UTP Low Profile Adapter (4447A-Z/X4447A-Z), these maximum limits apply:

- No more than eight cards per a domain.
- No more than four cards in an External I/O Expansion Unit (two per PCIe I/O boat).

Patches for Emulex PCI Express (PCIe) Adapters

The following Emulex PCIe adapters require drivers supplied in patch 120222-26:

- Sun StorageTek Enterprise Class 4Gb Dual-Port Fibre Channel PCIe HBA (XSEFC402AF)
- Sun StorageTek Enterprise Class 4Gb Single-Port Fibre Channel PCIe HBA (XSEFC401AF)

Hardware Issues and Workarounds

DVD Drives and `cfgadm`

The Solaris `cfgadm(1M)` command does not always unconfigure a DVD drive from a domain on the M8000/M9000 servers.

Disable the Volume Management Daemon (vold) before unconfiguring a DVD drive with the `cfgadm(1M)` command. To disable vold, stop the daemon by issuing the command `/etc/init.d/volmgt stop`. After the device has been removed or inserted, restart the daemon by issuing the command `/etc/init.d/volmgt start`.

Sun Crypto Accelerator 6000

If you are not using the correct version of the Sun Crypto Accelerator (SCA) 6000 driver, hot-plug operations on SCA 6000 can cause the M8000/M9000 servers to panic or hang. Version 1.1 of the SCA6000 driver and firmware supports hot-plug operations after the required bootstrap firmware upgrade has been performed. Version 1.0 of the SCA6000 driver does not support hot-plug and should not be used.

Hardware Documentation Updates

This section contains late-breaking hardware information that became known after the documentation set was published and corrections in the M8000/M9000 servers hardware documentation.

[TABLE 6-2](#) lists known documentation updates.

TABLE 6-2 Hardware Documentation Updates

Title	Page Number	Update
SPARC Enterprise M8000/M9000 Servers Site Planning Guide	1-35	For the order number of Vibration-proof bracket and Vibration-proof feet, see “Cabinet Stabilization Measures” on page 92 .
SPARC Enterprise M8000/M9000 Servers Installation Guide	2-5	TABLE 2-3 "Power Supply Connection Specifications" The following note will be added. Note - For the servers that have the plug with lock function, confirm that a 30A overcurrent protection device is available outside the server. If one is not available, prepare an external 30A overcurrent protection that can be achieved by means of no-fuse breakers (NFBs) or fuses. The plug with lock function refers to plugs other than grounding-type ones with two parallel blades, such as the NEMA L6-30, L6-20, L6-15, and L5-15.

TABLE 6-2 Hardware Documentation Updates (*Continued*)

Title	Page Number	Update
SPARC Enterprise M8000/M9000 Servers Installation Guide	3-39	The step 1 "Confirm that the system is powered on." in "3.7.5 Checking the Dual-Power Feed" will be changed to "Confirm that the system is powered on by checking the output of the <code>showdomainstatus -a</code> command from the XSCF Shell."
	4-10	4.5 "Verifying the Operation Using the Oracle VTS Software" Step 3 The following description will be deleted: For details on items to be diagnosed, see the test reference manual for Oracle VTS.

Miscellaneous Information

Cabinet Stabilization Measures

This section shows useful methods of securing an M8000/M9000 server to prevent it from shifting due to vibration.

Method of Securing the Cabinet to the Floor Surface

Vibration-proof Bracket

- order number: CA06620-H901

By specifying the above, you can issue an order to get the following four kinds of parts. (You should order the bolt separately.)

- Fixing bracket: C230-4130-X514 (x4)
- Bushing: C230-4080-X003 (x4)
- Metal washer: F6-WB12-121 (x4)
- Metal washer: F6-WM12-121 (x4)
- Bolt: F6-B12-***121 (Bolt diameter: M12)

***= Bolt length (mm)

The bolt length must be specified here.

Note – Consult with the company that constructed the building because the length depends on the structure of the building.

Vibration-proof Feet

- order number: CA06620-H902

By specifying the above, you can issue an order to get the following parts. (You should order the bolt separately.)

- F6-DA6G (x4)

Change this board leg (height adjustment leg) to the "F6-DA6G" and tighten the bolt from under the floor.

- Bolt diameter: M20
Bolt length: 15 mm + floor thickness

Note – Consult with the company that constructed the building because the length depends on the structure of the building.

FIGURE 6-1 Example of Securing the Cabinet to the Floor Surface Using the Fixing Bracket (M9000 Server)

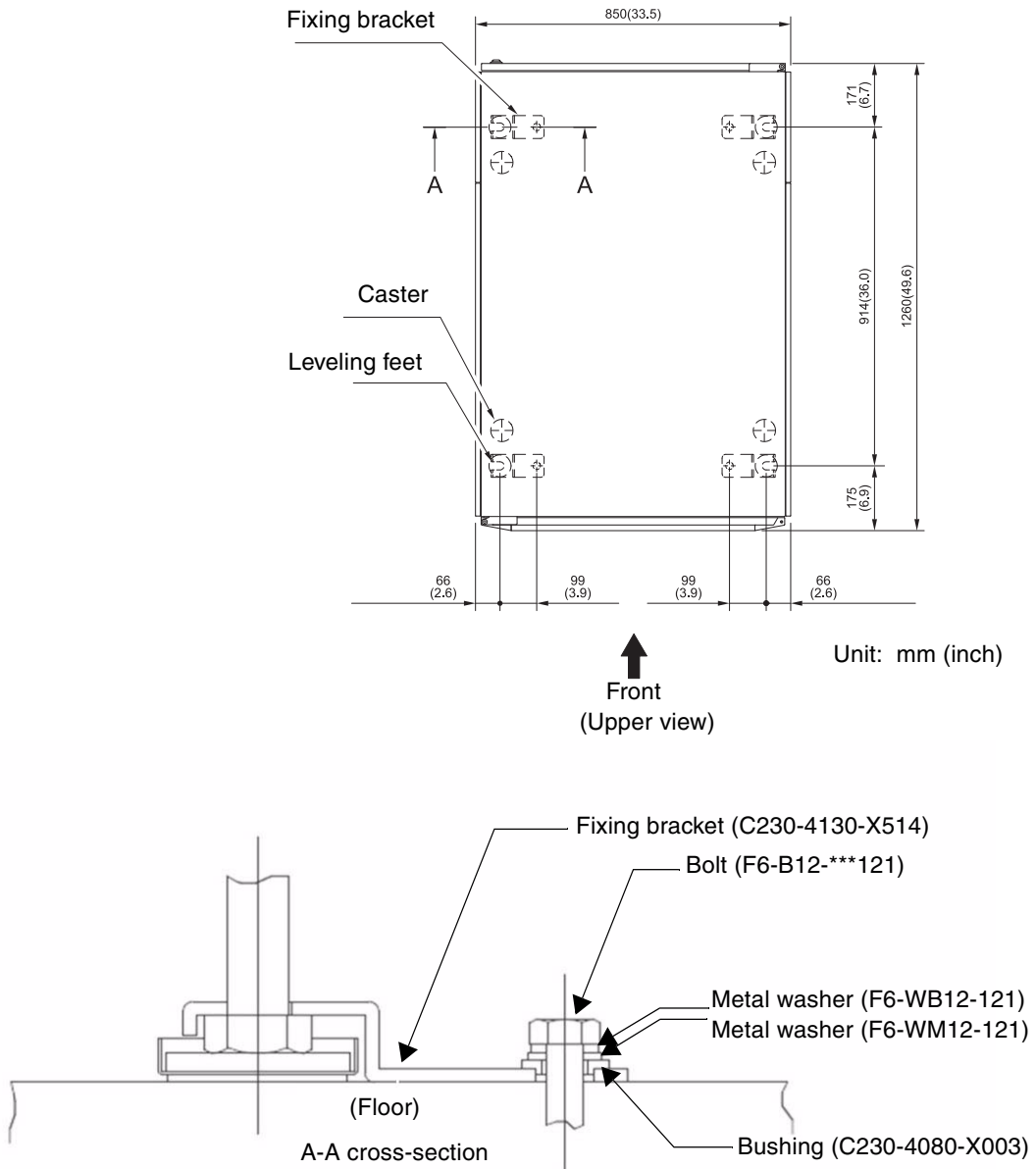


FIGURE 6-2 Example of Securing the Cabinet Through a Hole in the Floor

