

Fujitsu Group Profile (as of March 31, 2017)

Company Name Fujitsu Limited

Addresses

- Kawasaki Main Office
4-1-1 Kamikodanaka, Nakahara-ku, Kawasaki-shi,
Kanagawa 211-8588, Japan
- Headquarters
Shiodome City Center 1-5-2 Higashi-Shimbashi,
Minato-ku, Tokyo 105-7123, Japan

Representative Director President Tatsuya Tanaka

Established June 20, 1935

Manufacture and sale of communications systems,

Main Business Activities information processing systems, and electronic devices, and the provision of services related to those products

Capital ¥324.6 billion

Total Assets ¥3,191.4 billion (Liabilities: ¥2,172.2 billion,
Net assets: ¥1,019.2 billion)

Fiscal Year-end March 31

Employees Consolidated 155,069 /
Unconsolidated: 33,095

Directors 10 (incl. 2 female directors and
4 outside directors, as of June 26, 2017)

Consolidated Subsidiaries 502 companies

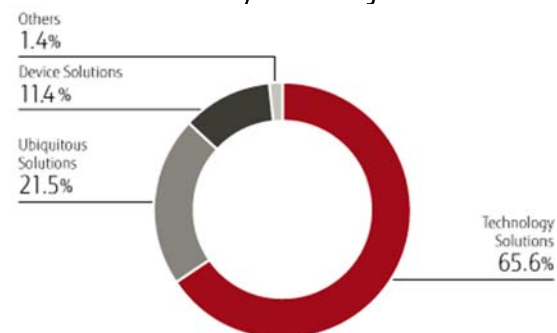
Equity-method Affiliates 24 companies

Stock Exchange Listings Tokyo, Nagoya

Regarding Our Business Segments

The Fujitsu Group provides a wide range of services and products with the advanced technology, high performance and high quality essential for the future of the ICT sector, and operates an integrated total solutions business, from the development, manufacture and sale of those products and electronic devices to the provision of maintenance services.

Break down of Revenue by Business Segment



Note: Revenue include intersegment sales

Technology Solutions

The Technology Solutions segment provides corporate customers around the globe with IT-driven business solutions based on our advanced technology and high-quality system platforms and services.



Data center (Tatebayashi)

Ubiquitous Solutions

The Ubiquitous Solutions segment is involved in the development, manufacture and sale of PCs and mobile phones, as well as audio and navigation equipment and other types of mobilewear.



ARROWS NX F-01J

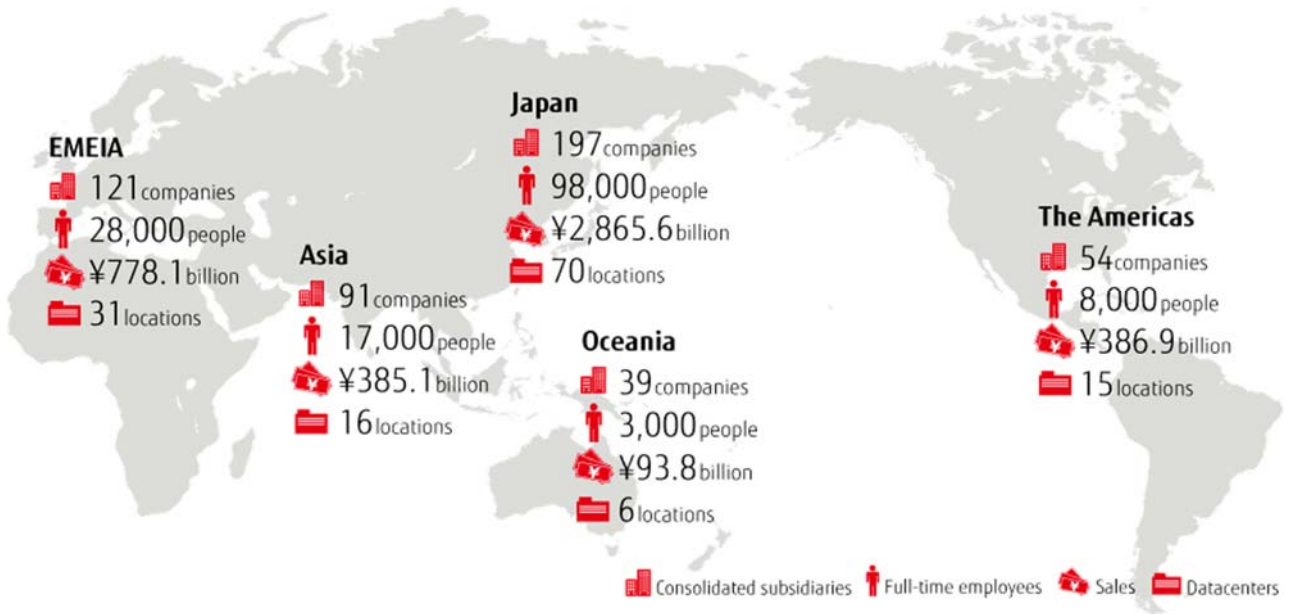
Device Solutions

The Device Solutions segment provides LSI devices for digital consumer electronics, automobiles, mobile phones and servers, as well as semiconductor packages and other electronic components. The segment also offers electronic components, such as batteries, relays and connectors.



FRAM 「MB85RS256TY」

Global Business System



* As of March 31, 2017. Only datacenters are as of May 31, 2017.