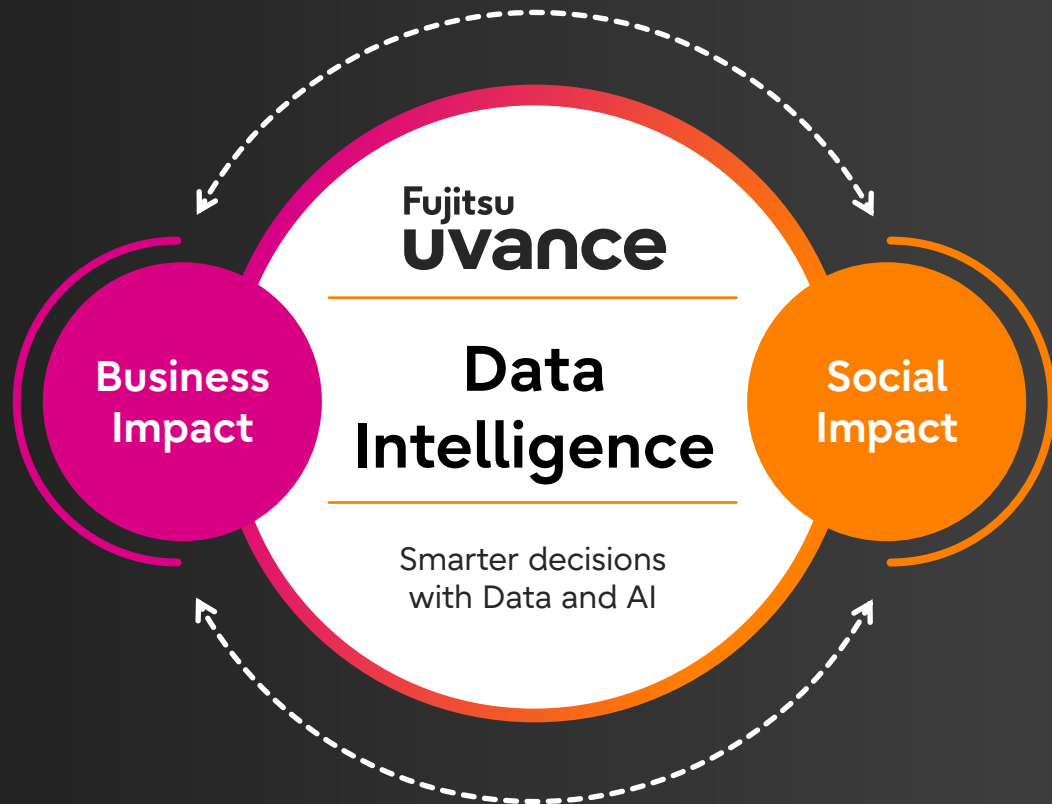
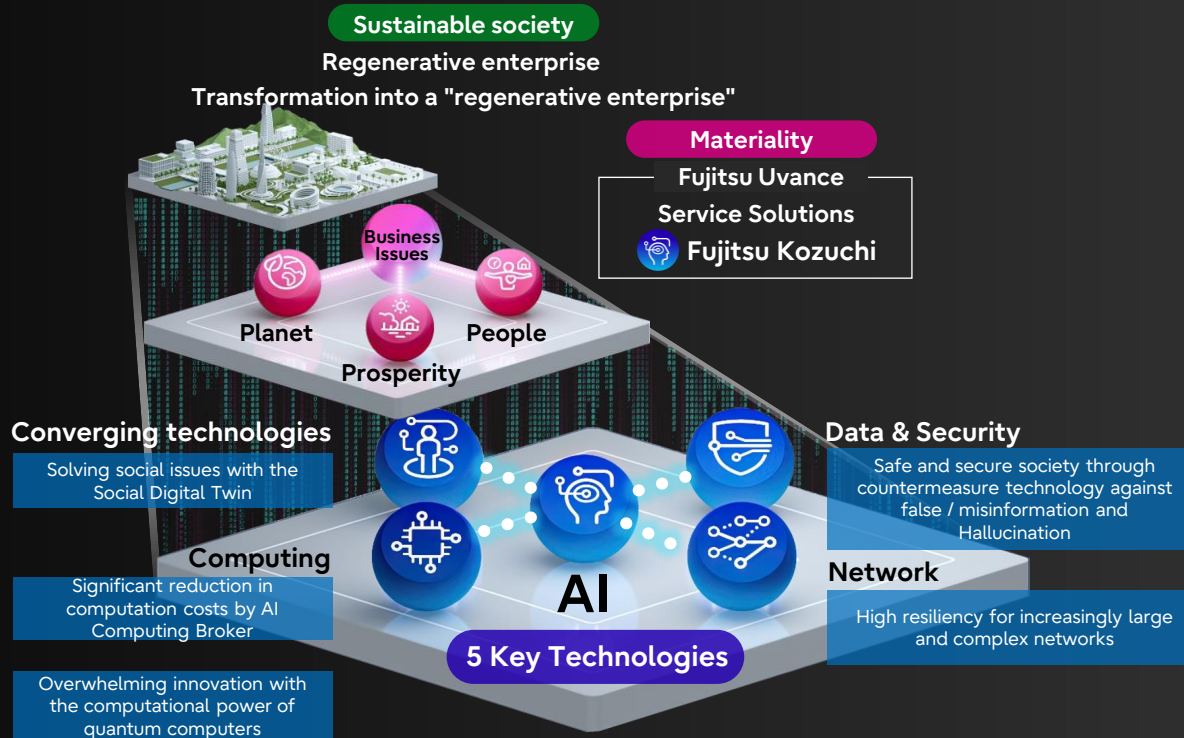


Fujitsu Uvance **update**

Creating both business and social
impact through smarter decision-
making supported by Data
Intelligence, with Data and AI

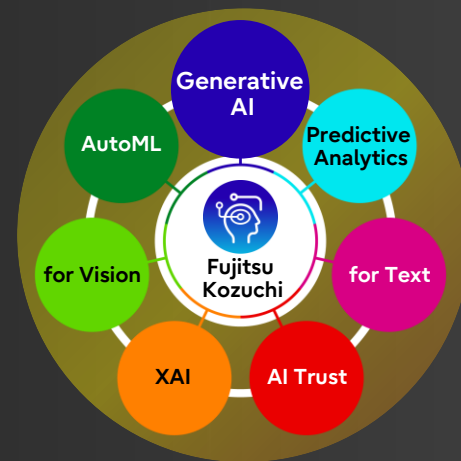


Create new value through the fusion of AI and 4 key technologies



Fujitsu AI Strategy

Focus on the Enterprise



Development of strong in-house IP
+ Partners

Expanding markets for large general-purpose models and small to medium-sized specialized models

Focus on specialized models that meet corporate needs



Three challenges in enterprise use of generative AI

1. Inability to handle the variety and volume of corporate data
2. Inability to quickly generate business know-how and process-specific models
3. Difficulty in complying with corporate rules and regulations



Solving issues in the use of generated AI in enterprises
and eliminating security concerns

Generative AI Framework for Enterprises

Aiming to become a global leader in the use of generated AI in enterprises

Solve issues in the use of generative AI in enterprises and eliminate security concerns

Fujitsu's Generative AI Framework for Enterprises

Fujitsu
Uvance

- The best in the world performance achievement

Knowledge Graph Extended RAG

Support for diverse
and large enterprise
data

Support
10M
characters

- The best in the world level performance

Generative AI amalgamation technology

Flexibly respond to
changing corporate
needs

0
Customize

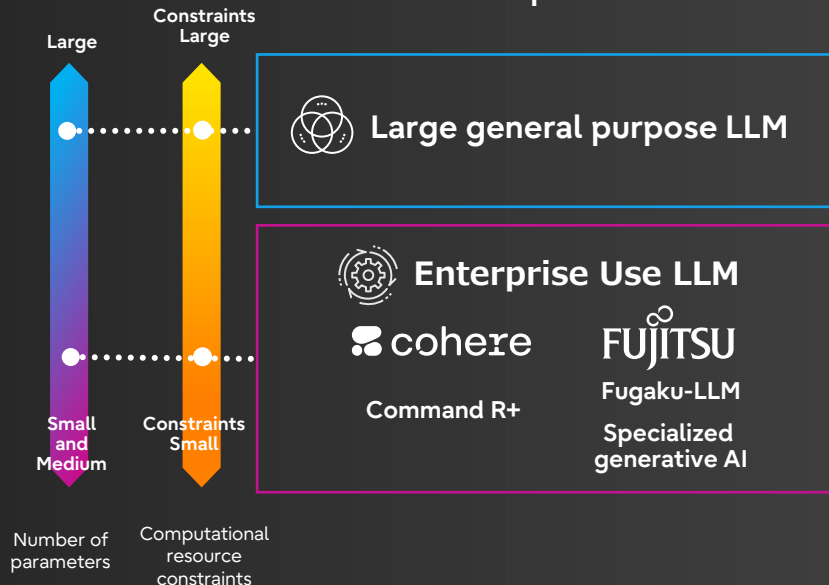
- World's first

Generative AI auditing technology

Behavior control dispels
concerns about
AI utilization

Compliance
with laws
and regulations

Optimized number of parameters with
low computational resource constraints
for enterprise use



Strategic partnership to develop and deliver
a large language model (LLM) to meet enterprise needs

Fujitsu
uvance



A leading security and data privacy-focused enterprise AI company

- Highest level of frontier model performance (accuracy and speed) for business use
- High cost-performance and flexible delivery

“World-Class” Team

- Comprised of established AI and business experts



CEO **Aidan Gomez**

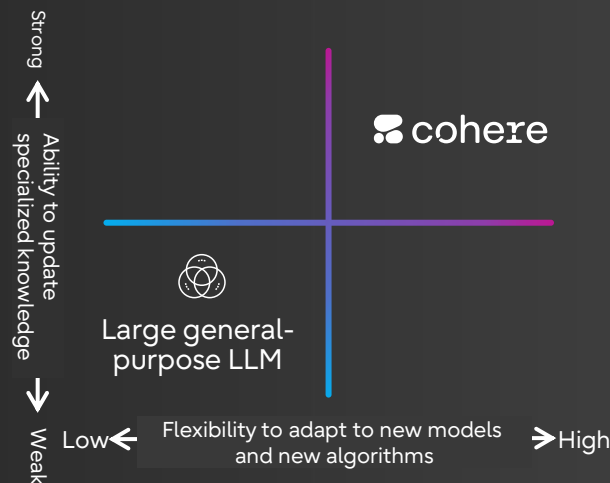
one of the inventors of the revolutionary Transformers architecture

111
engineers

67
researchers



Unique position among LLM vendors



Early release from the AI service Fujitsu Kozuchi in September 2024

Enterprise large language model “Takane” (tentative name)

Fujitsu
uvance

 **cohere**


Joint development
Domain-specific LLM

Takane
高 嶺

 **FUJITSU**

- LLM optimized for enterprise operations
- World-class RAG technology that enables accurate use of in-house data
- Industry-leading Embed, Rerank models
- Highly customizable for key business tasks

Latest large language model
Command R+

- Japanese Specific Additional Learning/
Fine-tuning Technology
- Knowledge Graph Extended RAG (July 2024)
- Generative AI Amalgamation Technology
(August 2024)
- Generative AI auditing technology
(September 2024)
- Delivering in a Private Environment

Aiming for the highest performance in Japanese

Sustainable Society

Regenerative enterprise
Transformation into a
"regenerative enterprise"

Materiality

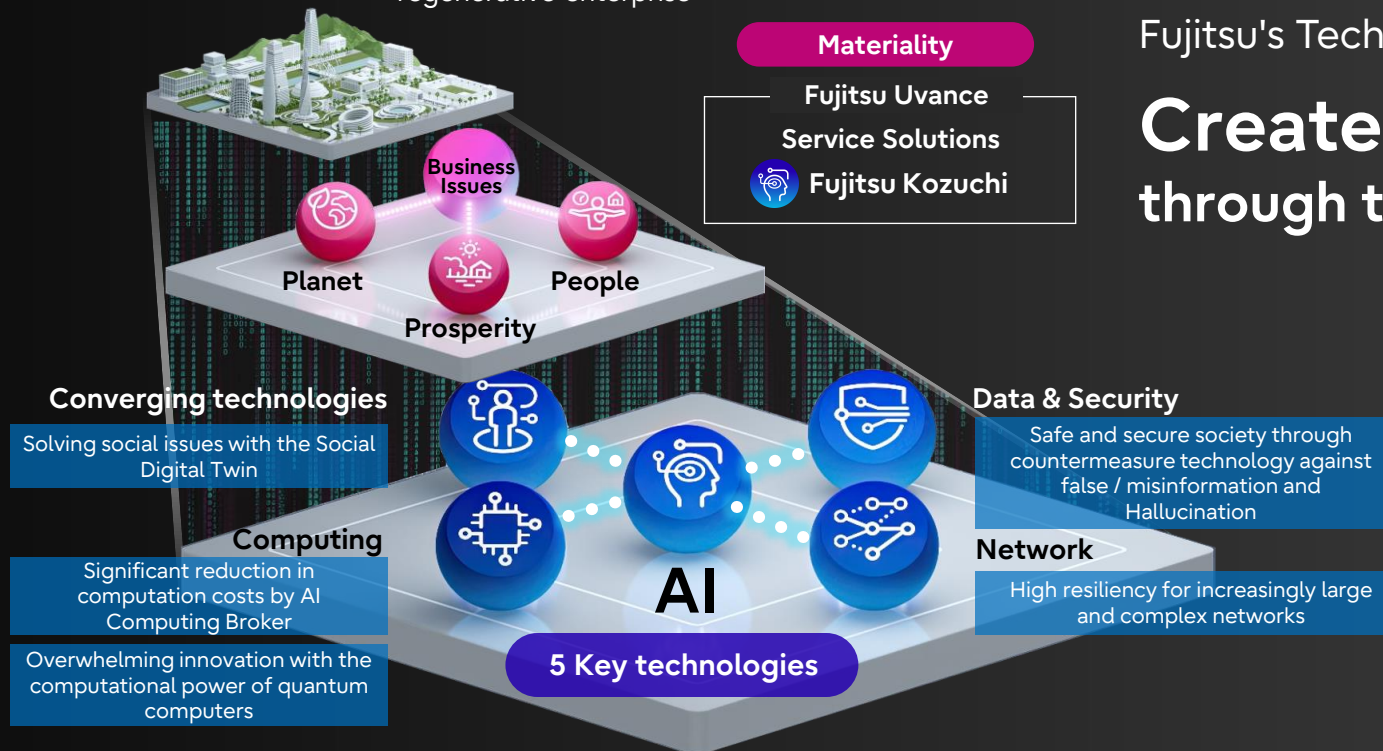
Fujitsu Uvance
Service Solutions



Fujitsu Kozuchi

Fujitsu's Technology Strategy

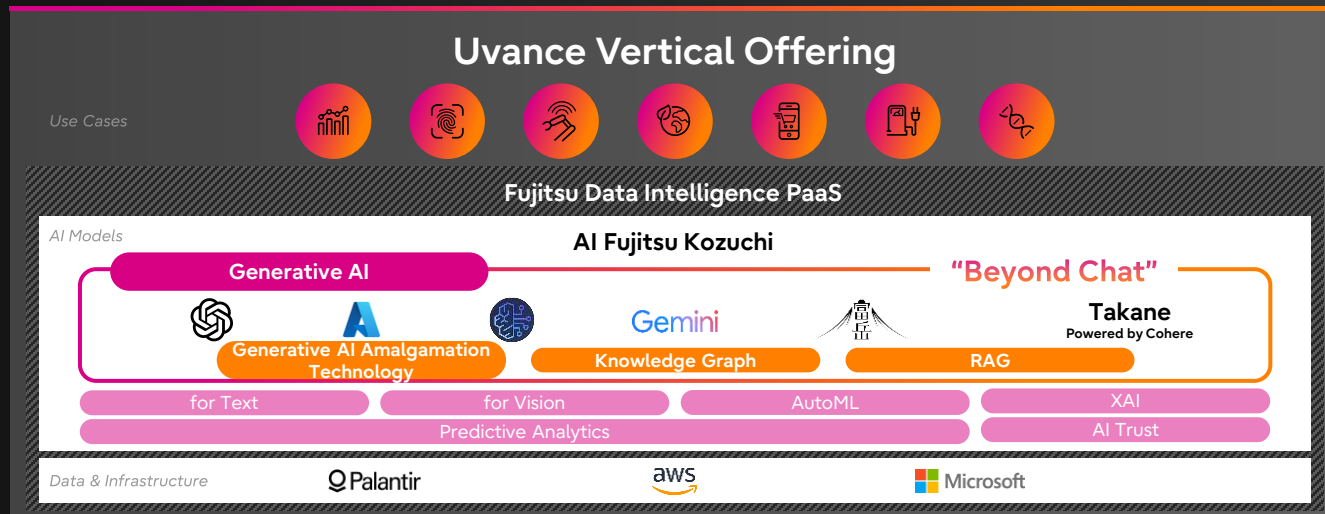
Create new value through the fusion of AI



Fujitsu Uvance: Leading with Generative AI Infusion



- **Through the enhancement of Uvance offerings, customers can enjoy the benefits of AI without any effort.**
 - **Deliver specialized LLMs :** Collaborate with Cohere to deliver domain-specific LLMs for industry and for individual companies
 - **Beyond Chat :** Beyond traditional use cases such as chat, reporting, and data transformation of unstructured data, LLMs can be incorporated into complex business operations for significant productivity gains
- **Customers can utilize optimal AI without consciously considering "accuracy," "cost," or "security."**
 - Selecting the best LLM (Routing) and taking advantage of multiple LLMs (Mixing)
 - Collaboration with Cohere to launch into private cloud environments



Thank you