



Fujitsu and Sun Microsystems

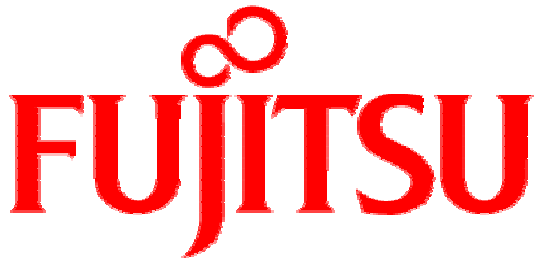
Collaboration to Develop and Deliver Next-Generation Solaris/SPARC Server Systems

June 2, 2004

Fujitsu Limited

Collaboration Overview

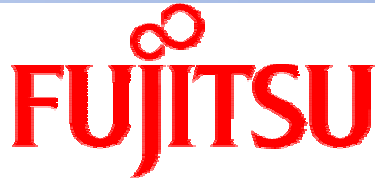
As of June 2, Fujitsu and Sun have agreed to collaborate in developing next-generation Solaris/SPARC server systems.



Collaboration Objectives

Maintaining and Enhancing
the Competitive Leadership of SPARC and Solaris
Providing Customers with Optimal Solutions

Combining the Power of
Fujitsu and Sun



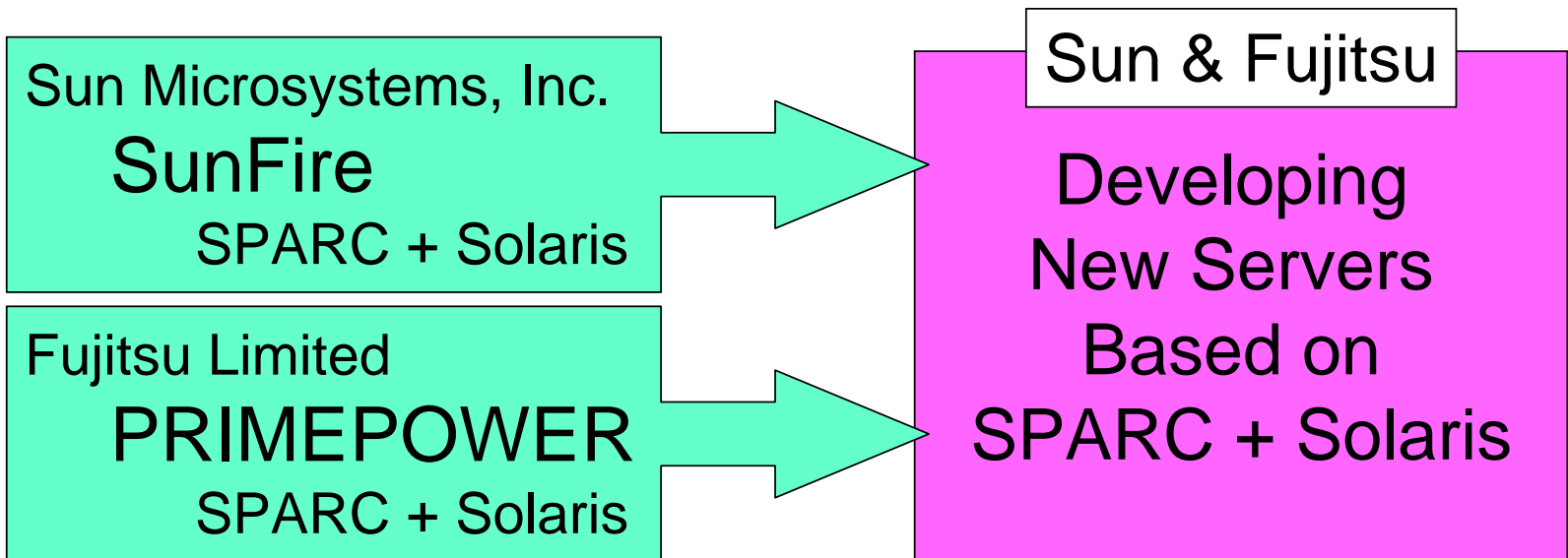
Strength in developing high-performance,
high-reliability processors for
mainframe-class systems
(based on 90nm technology at Akiruno
Technology Center)



Strength in developing
software, such as Solaris,
J2EE, and JAVA

Integration of UNIX Server Product Lines

The two companies will collaborate in joint development of UNIX servers, and plan to introduce an integrated server line in fiscal 2006 (Combining Fujitsu's PRIMEPOWER line with Sun's SunFire line)

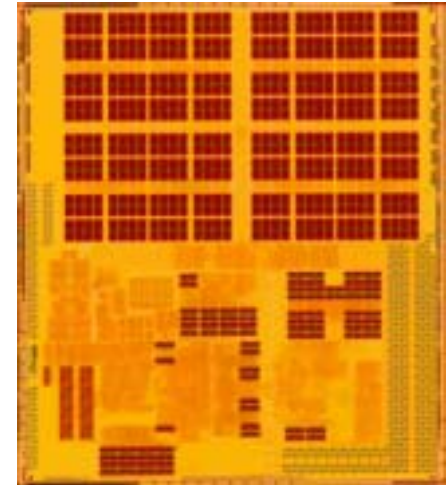


Fujitsu's Strength in Developing Processors

Leading-Edge CPU Technology

- Heritage: Technology Development Method Designed for Mainframes
- Expertise: Proprietary Technology for High Performance and Reliability
- Improvements: Micro Architecture Continuously Upgraded to Meet the Needs of a New Era

SPARC64 V



Leading-Edge Semiconductor Technology

- 90nm 10-Layer Copper Interconnects + Low-k*
- High Integration + High Performance + Low Power Consumption

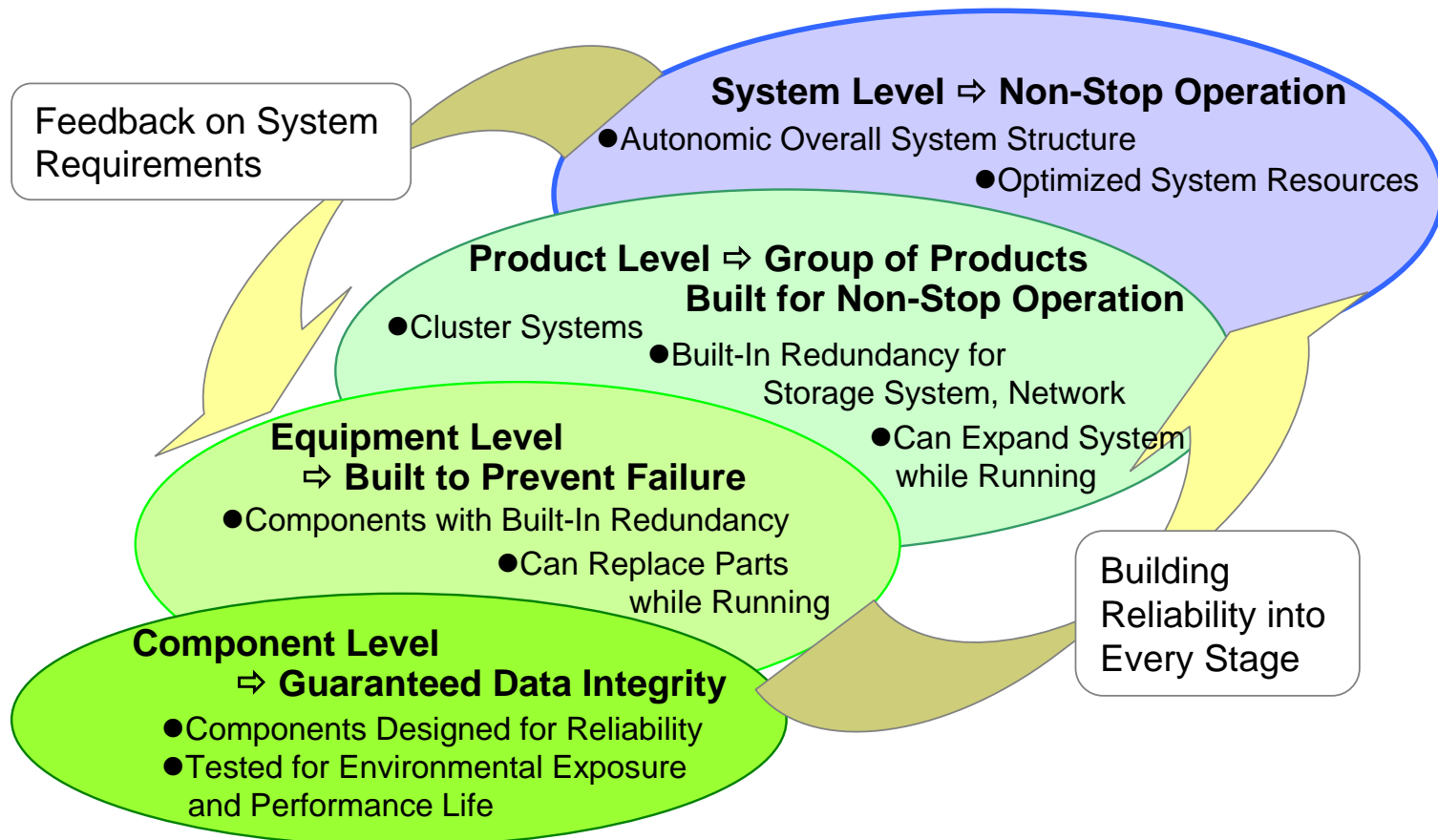
* Low-Dielectric Interlayer Insulation, Reduces Interconnect Power Requirements.

Akiruno Technology Center



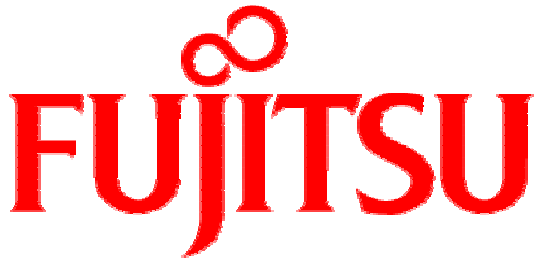
Fujitsu: Setting New Standards in Reliability

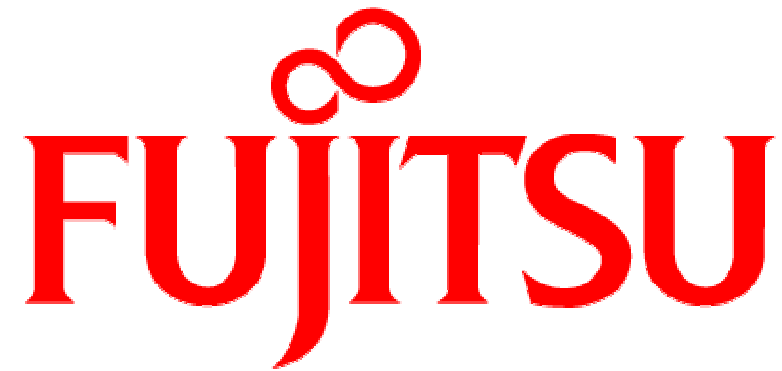
Establishing a Quality Chain, from Components to the System Level



Providing Customers with the Best Solutions

Fujitsu and Sun will collaborate in a variety of areas and deliver UNIX servers offering the world's best performance and reliability based on their SPARC and Solaris technologies.



The Fujitsu logo consists of a red infinity symbol positioned above the word "FUJITSU". The word "FUJITSU" is rendered in a red, serif typeface with a classic, slightly condensed appearance. The infinity symbol is a simple, clean line drawing.

FUJITSU

THE POSSIBILITIES ARE INFINITE