

FUJITSU



**Crafting leading-edge IT  
solutions for customers  
around the world**



http://

www.

*annual report 1998*

fujitsu.

co.jp/

*Customer focus is key to meeting the challenges  
of an era of mega-transformation.*

---

*Naoyuki Akikusa  
President, Fujitsu Limited*

## CONTENTS

- 01...Financial Highlights
- 02...Message to Shareholders
- 05...Investors' FAQ
- 08...Fujitsu's Global Solutions  
Business Structure
- 12...Review of Operations
- 12...Information Processing
- 16...Telecommunications
- 18...Electronic Devices
- 20...Fujitsu in the Community
- 22...Financial Section
- 44...Board of Directors

## Principal Subsidiaries and Affiliates

(July 1, 1998)

—Consolidated Subsidiaries 513  
(in Japan 129, outside Japan 384)  
—Principal Affiliates 32

### ■ Japan

#### Subsidiaries

##### Listed

Shinko Electric Industries Co., Ltd.  
Fujitsu Business Systems Ltd.  
Fujitsu Kiden Ltd.  
FDK Corporation  
Fujitsu Denso Ltd.  
Takamisawa Electric Co., Ltd.

Fujitsu Devices Inc.

##### Unlisted

Fujitsu Laboratories Ltd.  
Fujitsu TEN Limited  
PFU Limited  
Fujitsu Support and Service Inc.  
Fujitsu FIP Corporation  
Fujitsu Systems Construction Limited  
Fujitsu AMD Semiconductor Limited

#### Affiliates

Fanuc Ltd.  
Advantest Corporation

### ■ Asia

#### Subsidiaries

Fujitsu Asia Pte. Ltd.

### ■ Australia

#### Subsidiaries

Fujitsu Australia Limited

### ■ The Americas

#### Subsidiaries

Amdahl Corporation  
Fujitsu America, Inc.  
Fujitsu PC Corporation  
Fujitsu Network Communications, Inc.  
Fujitsu Microelectronics, Inc.

### ■ Europe

#### Subsidiaries

ICL PLC  
Fujitsu Computers (Europe) Ltd.  
Fujitsu Europe Limited  
Fujitsu Microelectronics Limited  
Fujitsu Telecommunications Europe Limited  
Fujitsu ICL España, S.A.

## Shareholders' Data

(March 31, 1998)

### Capital

¥249,347 million

### Common Stock

Authorized: 5,000,000,000 shares  
Issued: 1,862,355,910 shares  
Number of shareholders: 169,234

### Principal Shareholders

Name	No. of shares held (thousands)	Percentage of total shares outstanding
Fuji Electric Co., Ltd. . . . .	244,657	13.1%
Asahi Mutual Life Insurance Company . . . . .	117,142	6.3
The Dai-Ichi Kangyo Bank, Limited . . . . .	84,076	4.5
The Sumitomo Trust and Banking Company, Limited . . . . .	52,188	2.8
The Mitsubishi Trust and Banking Corporation . . . . .	44,750	2.4
The Industrial Bank of Japan, Limited . . . . .	42,202	2.3
The Toyo Trust and Banking Company, Limited . . . . .	38,719	2.1
The Chuo Trust and Banking Company, Limited (for trust) . . . . .	38,413	2.1
The Chase Manhattan Bank NA London (Standing proxy: The Fuji Bank, Ltd.) . . . . .	38,383	2.1
The Asahi Bank, Ltd. . . . .	29,202	1.6

### Corporate Headquarters

6-1, Marunouchi 1-chome, Chiyoda-ku, Tokyo, 100-8211, Japan  
Phone: 81-3-3216-3211

### Transfer Agent

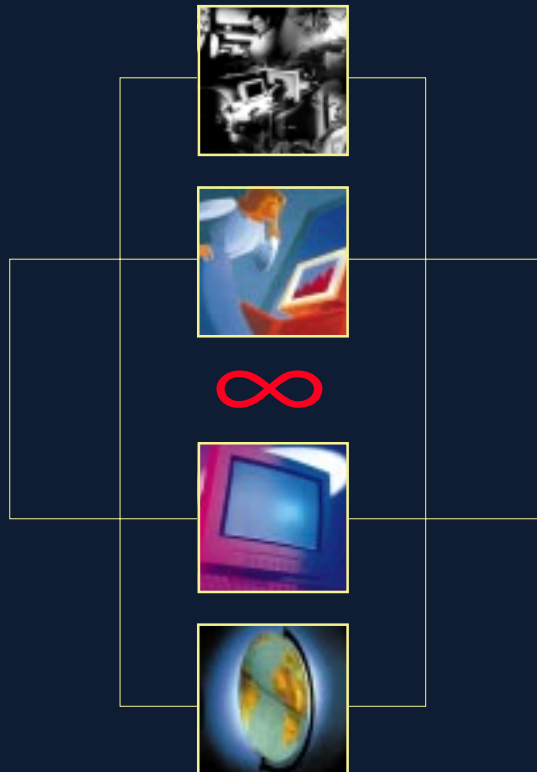
The Toyo Trust and Banking Company, Limited  
4-3, Marunouchi 1-chome, Chiyoda-ku, Tokyo, 100-0005, Japan

### Stock Exchange Listings

Japan: Tokyo, Osaka, Nagoya  
Overseas: Frankfurt, London, Zurich, Basel, Geneva

### Shareholder Information

For further information, please contact  
Fujitsu Limited  
Investor Relations  
phone: +81-3-3213-4160  
fax: +81-3-3216-9365  
e-mail: pr\_mailbox@hq.fujitsu.co.jp



## FUJITSU LIMITED

6-1, Marunouchi 1-chome, Chiyoda-ku, Tokyo 100-8211, Japan

Phone: +81-3-3213-4160

Fax: +81-3-3216-9365

Fujitsu's Home Page on the Internet URL: <http://www.fujitsu.co.jp/>

©1998 FUJITSU LIMITED

Printed in Japan

BA0010-2M

This entire report is printed on recycled paper.