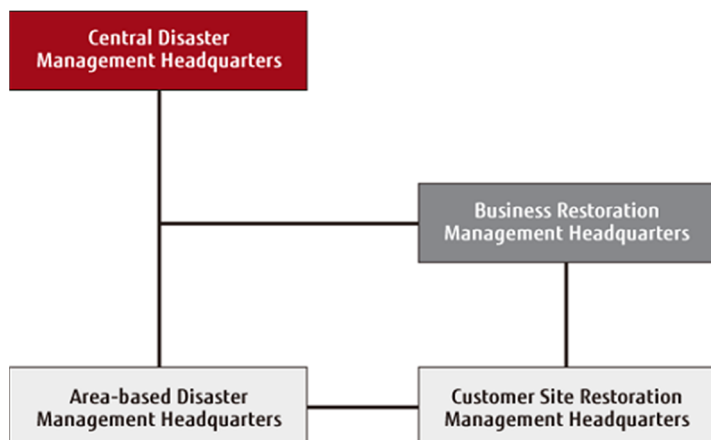


Group-Wide Disaster Management

Group-Wide Disaster Management System



Fujitsu Group Joint Disaster Response Drills

Fujitsu and its group companies in Japan conduct an annual nationwide disaster drill incorporating mock disaster exercises. The purpose of this drill is to assess the impact and correspondance on customers and the Group by simulating a large-scale earthquake with a high probability of occurrence and expected to cause serious damage. By forming a company-wide disaster prevention organization, we work together to master and verify the procedures for dealing with large-scale disasters such as "Tokyo Inland Earthquake" and "Nankai Trough Megathrust Earthquake".

In the actual training, the key measures for initial response and business continuity response as well as the recovery support measures for customers' ICT systems, are confirmed in cooperation with each business site, including those affected by the disaster. At the same time, training was carried out at sites throughout Japan to verify the initial response procedures of local disaster management office immediately after a disaster (checking employee safety, assessing the extent of damage to work premises, etc.). We then examine issues identified through these drills and work to improve the organization's disaster preparedness and its business continuity capabilities.

Carrying Out Inspection Work by Specialist Teams

Inspection work is conducted at facilities selected from among all the Fujitsu Group companies in Japan as being those most at risk and where any damage would have the greatest impact. These inspections are led in the field by various teams drawn from internal departments for environmental management, facility management, risk management and the safe operation of manufacturing equipment and processes. The teams check that laws are being upheld and also conduct inspections and provide guidance intended to prevent

accidents that could arise from aging infrastructure or from fires and other natural disasters. This serves to boost safety at the inspected facilities.

The sharing of case studies illustrating the improvements and the most successful disaster preparedness measures resulting from these inspections also helps to promote consistent safe operations throughout the entire Fujitsu Group in Japan.